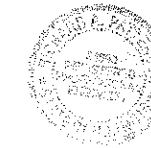


04-26-13 LETTING ITEM 109

STATE OF ILLINOIS  
 DEPARTMENT OF TRANSPORTATION  
 DIVISION OF HIGHWAYS  
 PLANS FOR PROPOSED  
 FEDERAL AID SECONDARY PROJECT  
 SURFACE TRANSPORTATION RURAL  
 JASPER COUNTY  
 SECTION 06-00108-00-FP  
 F.A.S. 1705 - COUNTY HIGHWAY 3  
 JOB NO. C-97-019-13  
 PROJECT NO. RS-1705(104)

ROUTE	SECTION	COUNTY	TOTAL SHEETS	SHEET NO.
F.A.S. 1705	06-00108-00-FP	JASPER	2	1
CONTRACT NO. 95703		ILLINOIS	PROJECT RS-1705(104)	

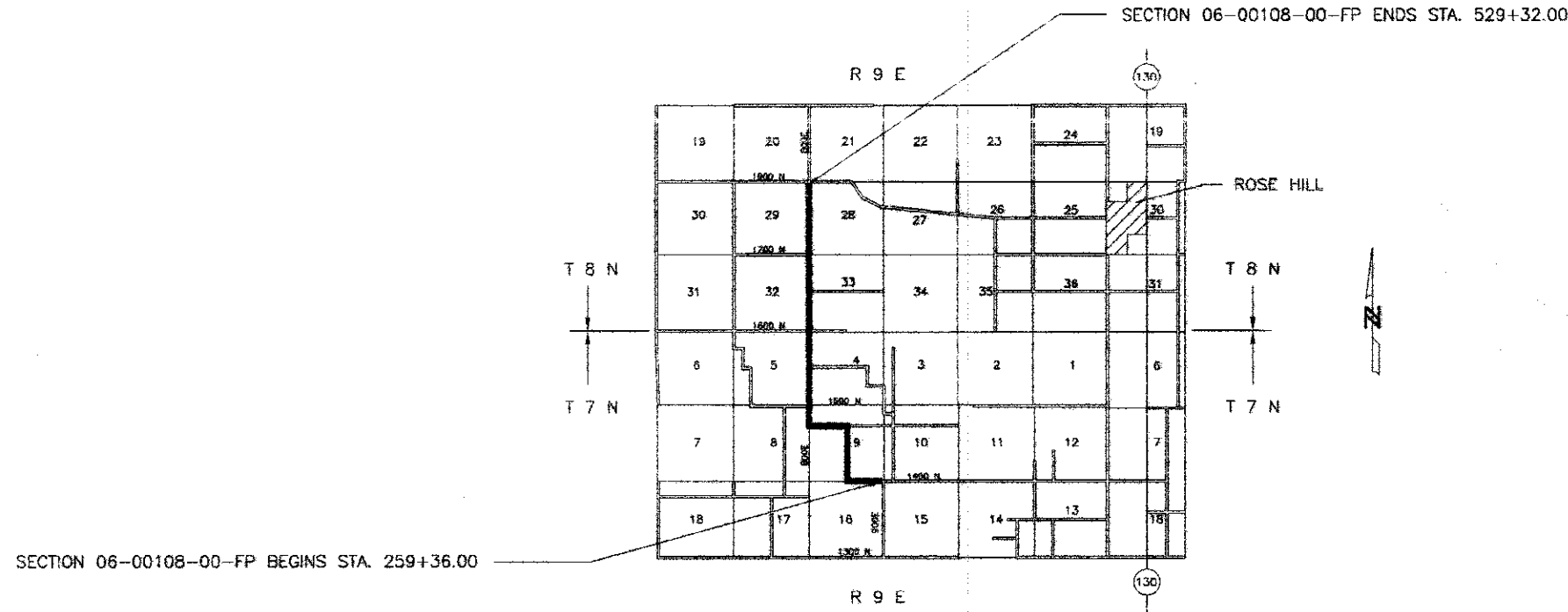
THESE PLANS WERE PREPARED BY ME, OR A FULL TIME MEMBER OF MY STAFF, WORKING UNDER MY PERSONAL SUPERVISION.



*Richard A. Patton*  
 ILLINOIS REG. PROF. ENG. 36893  
 LICENSE EXPIRES 11/30/13  
 12871 EAST STATE HWY 33  
 NEWTON, ILLINOIS 62448  
 PHONE 618-783-2915

1-7-13  
 DATE

INDEX OF SHEETS	
SHEET	ITEM
1	COVER SHEET
2	SUMMARY OF QUANTITIES STANDARD 000001-06 STANDARD 701001-02 BLR 22-7



RURAL MAJOR COLLECTOR  
 ADT = 225  
 DESIGN SPEED = 40 MPH

CONTRACT NO. 95703

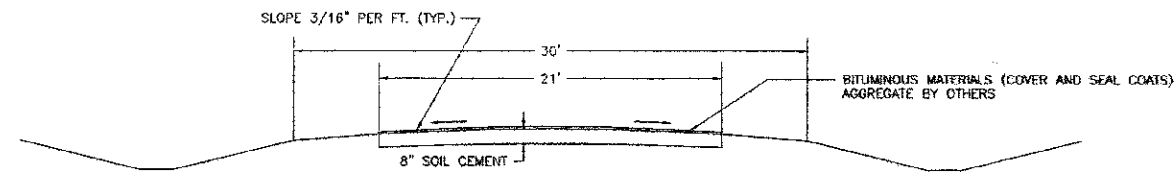
Joint Utility Locating Information for Excavators  
 JULIE 1-800-892-0123

NET LENGTH SECTION 06-00108-00-FP = 26,996.0 Ft. = 5.113 Mi.

APPROVED	<u>2-26</u> 20 <u>13</u>
	<i>Richard A. Patton</i> COUNTY ENGINEER
STATE OF ILLINOIS DEPARTMENT OF TRANSPORTATION	
PASSED	<u>2-28</u> 20 <u>13</u>
	<i>Mawhood Kead</i> DISTRICT SEVEN ENGINEER OF LOCAL ROADS AND STREETS
Releasing For Bid Based on Limited Review	<u>2-28</u> 20 <u>13</u>
	<i>Roque J. Quabell</i> DEPUTY DIRECTOR OF HIGHWAYS REGION FOUR ENGINEER

ROUTE	SECTION	COUNTY	TOTAL SHEETS	SHEET NO.
F.A.S. 1705	06-00108-00-FP	JASPER	2	2
CONTRACT NO. 95703		ILLINOIS	PROJECT RS-1705(104)	

TYPICAL SECTION OF PROPOSED IMPROVEMENT

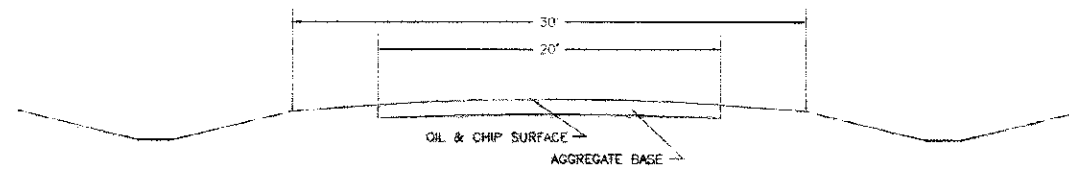


STA. 259+36.00 TO STA. 529+32.00

PAVEMENT DESIGN DATA

CLASS IV ROAD  
 STRUCTURAL DESIGN TRAFFIC (S.D.T.) 2032 PC = 735  
 SU = 50  
 MU = 15  
 MINIMUM SOIL SUPPORT: I.B.U. = 3  
 PERCENT OF S.D.T. IN TRAFFIC LANE P = 50%  
 S = 50%  
 M = 50%  
 TRAFFIC FACTOR = 0.018  
 STRUCTURAL NUMBER = 2.40  
 PAVEMENT STRUCTURE MATERIALS:  
 STAGE 1 - 8" SOIL-CEMENT BASE COURSE (500 PSI MIN.)  
 A-2 SEAL COAT (AGGREGATE BY OTHERS)  
 STAGE 2 - 2" H.M.A. 21' WIDE (FUTURE)

TYPICAL SECTION OF EXISTING ROAD



STA. 259+36.00 TO STA. 529+32.00

SECTION 06-00108-00-FP  
 SUMMARY OF QUANTITIES

QUANTITY	UNIT	ITEM	CODE NUMBER
62,991	SQ. YD.	PROCESSING SOIL-CEMENT BASE COURSE 8"	35200300
39,187	100 WT.	CEMENT	35200500
37,795	GALLON	BITUMINOUS MATERIALS (COVER AND SEAL COATS)	40300300
1	LUMP SUM	MOBILIZATION	67100100