

**THOUVENOT, WADE & MOERCHEN, INC.**  
ENGINEERS • SURVEYORS • PLANNERS



- CORPORATE OFFICE**  
4940 OLD COLLINSVILLE RD.  
SWANSEA, ILLINOIS 62226  
TEL (618) 624-4488  
FAX (618) 624-6688  
corp@twm-inc.com
- WATERLOO OFFICE**  
113 SOUTH MAIN STREET  
WATERLOO, ILLINOIS 62298  
TEL (618) 939-5050  
FAX (618) 939-3938  
waterloo@twm-inc.com
- EDWARDSVILLE OFFICE**  
1015B CENTURY DRIVE  
EDWARDSVILLE, ILLINOIS 62025  
TEL (618) 656-4040  
FAX (618) 656-4343  
edwardsville@twm-inc.com
- ST. CHARLES OFFICE**  
400 N. 5TH STREET, SUITE 101  
ST. CHARLES, MISSOURI 63301  
TEL (636) 724-6300  
FAX (636) 724-8304  
stcharles@twm-inc.com

- PROFESSIONAL REGISTRATIONS**
- |                                     |            |
|-------------------------------------|------------|
| ILLINOIS PROFESSIONAL DESIGN FIRM   | 184-001220 |
| PROFESSIONAL ENGINEERING CORP.      | 62-035170  |
| PROFESSIONAL STRUCTURAL ENGR. CORP. | 81-005202  |
| ILLINOIS PROF. LAND SURVEYING CORP. | 048-000028 |
| MISSOURI PROFESSIONAL ENGR. CORP.   | MC 001528  |
| MISSOURI LAND SURVEYING CORP.       | MC 000346  |

Signature: \_\_\_\_\_  
Signature Date: \_\_\_\_\_  
Explanation Date: \_\_\_\_\_

**STATEMENT OF RESPONSIBILITY**

I hereby confirm that the document herein to be authorized by my seal is restricted to this sheet, and I hereby disclaim any responsibility for all other drawings, specifications, estimates, reports or other documents or instruments relating to or intended to be utilized for any other part of the architectural, engineering or survey project.

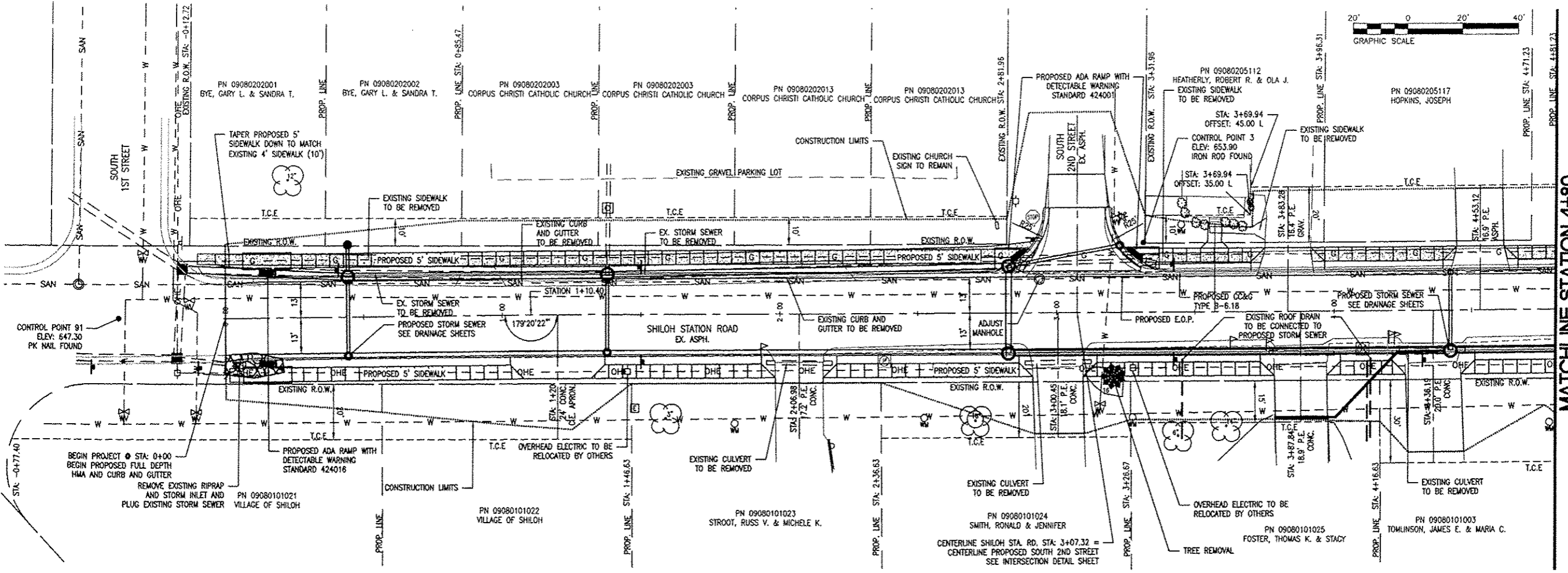
**TITLE**  
STA: 0+00 TO STA: 4+80  
PLAN AND PROFILE

**PROJECT**  
10-0001-01-PV AND 11-0001-02-PV

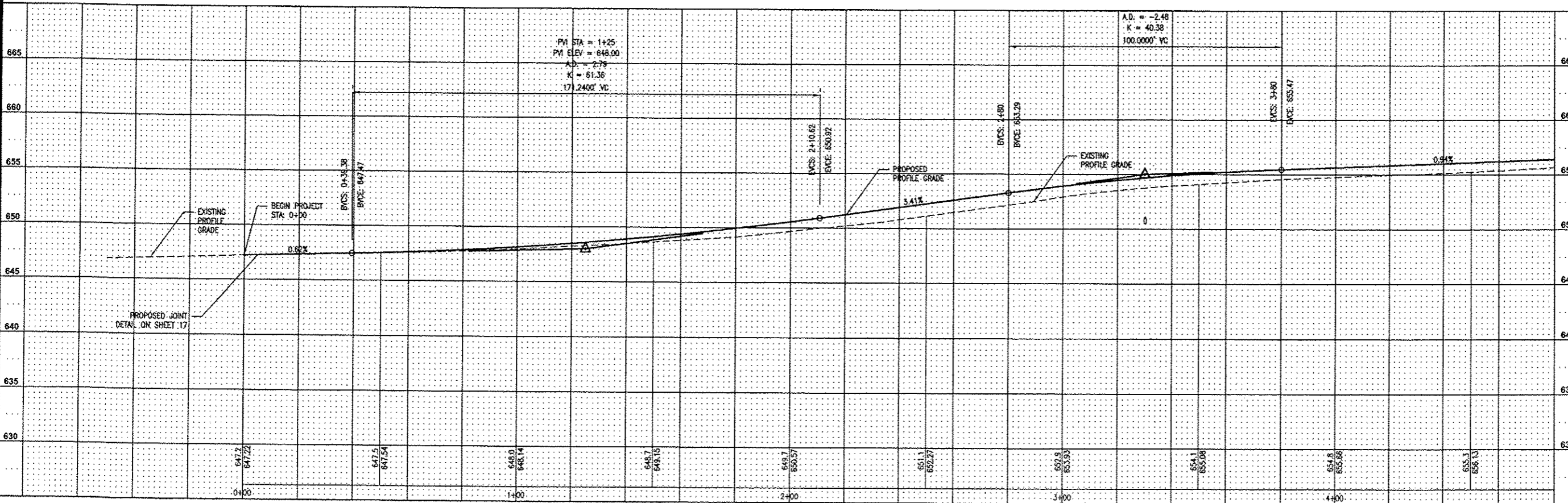
**SHILOH STATION ROAD RECONSTRUCTION - PHASE 1 AND 2**  
VILLAGE OF SHILOH  
ST. CLAIR COUNTY, ILLINOIS

REV.	DATE	DESCRIPTION

DRAWN BY: _____	NTS	SHEET <b>8</b> OF 24 SHEETS
DESIGNED BY: _____	NTS	
CHECKED BY: _____		PROJECT DESCRIPTION PROJECT NUMBER T01100602
APPROVED BY: _____		
<input type="checkbox"/> ISSUED FOR REVIEW <input type="checkbox"/> ISSUED FOR BIDDING <input type="checkbox"/> ISSUED FOR CONSTR. <input type="checkbox"/> RECORD DRAWING		



P:\100602\1-CADD - DWG\1-2-TR\Drawings\Phase 1 & 2 Combined\100602 - Phase 1 - Plan and Profiles, Detail, Drainage, Erosion, Marking and Signage, Wearing.dwg



MATCHLINE STATION 4+80