

THOUVENOT, WADE & MOERCHEN, INC. ENGINEERS SURVEYORS PLANNERS

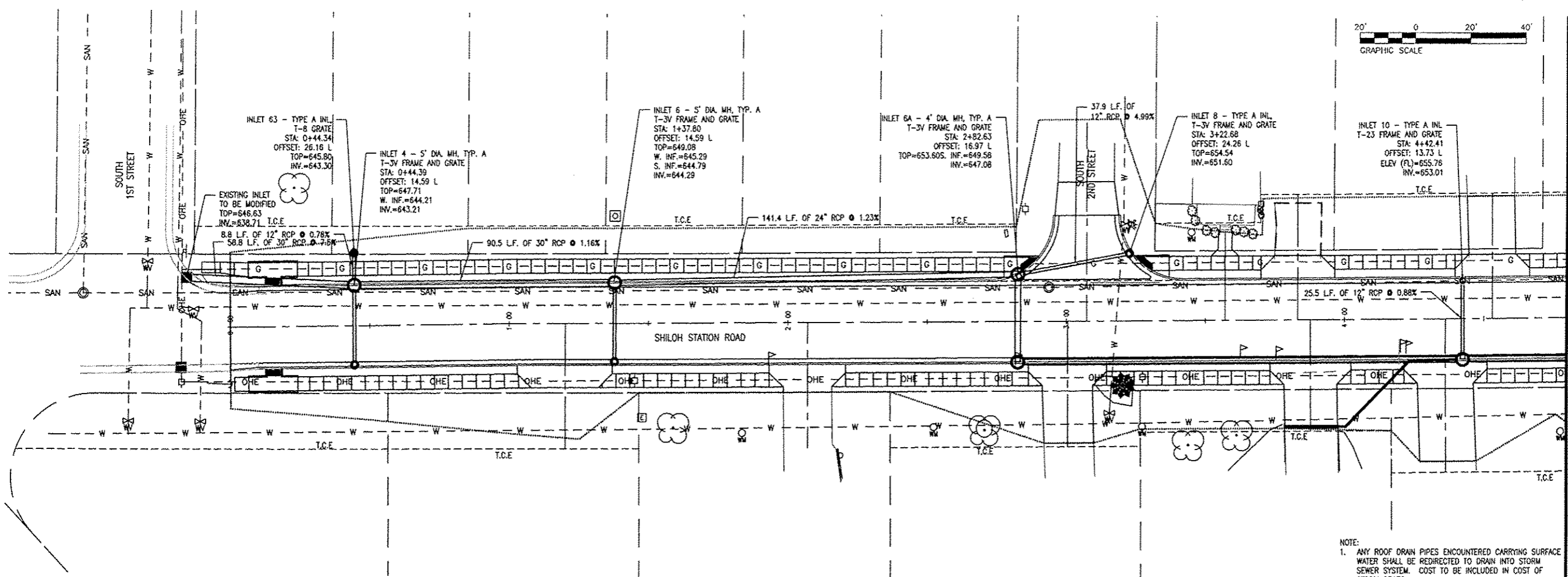


- CORPORATE OFFICE
4940 OLD COLLINSVILLE RD.
SWANSEA, ILLINOIS 62226
TEL (618) 624-4488
FAX (618) 624-6688
corp@twm-inc.com
- WATERLOO OFFICE
113 SOUTH MAIN STREET
WATERLOO, ILLINOIS 62298
TEL (618) 939-5050
FAX (618) 939-3938
waterloo@twm-inc.com
- EDWARDSVILLE OFFICE
1015B CENTURY DRIVE
EDWARDSVILLE, ILLINOIS 62025
TEL (618) 656-4040
FAX (618) 656-4343
edwardsville@twm-inc.com
- ST. CHARLES OFFICE
400 N. 5TH STREET, SUITE 101
ST. CHARLES, MISSOURI 63301
TEL (636) 724-8300
FAX (636) 724-8304
stlouis@twm-inc.com

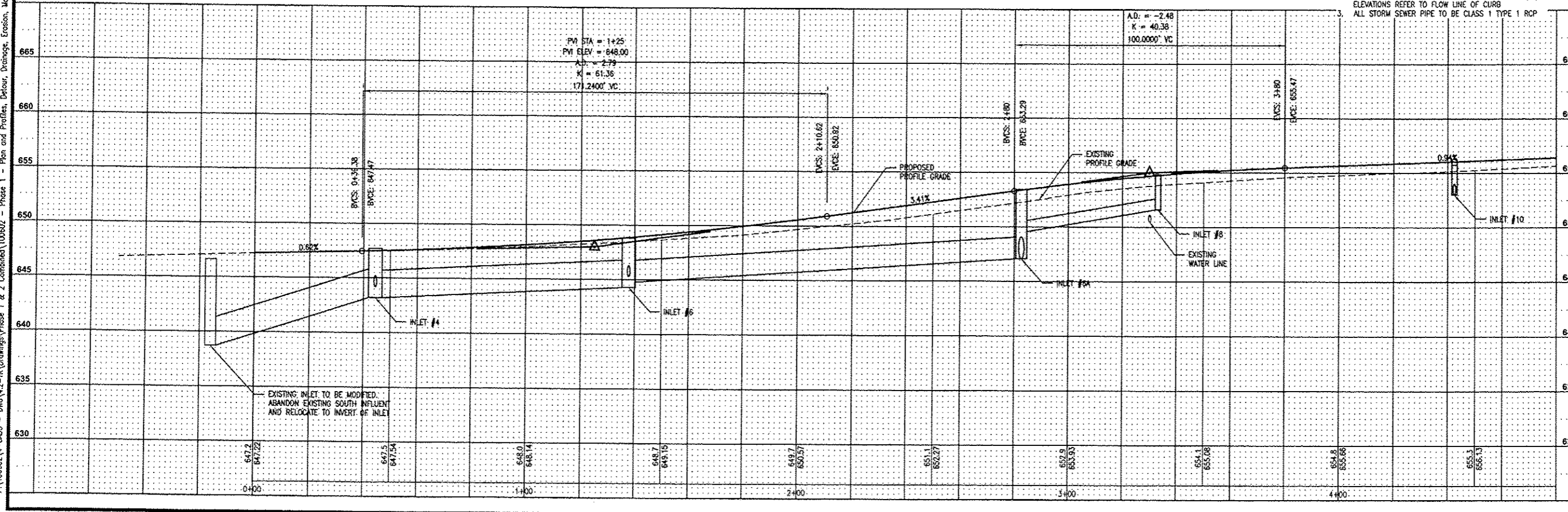
PROFESSIONAL REGISTRATIONS	LICENSE NO.
ILLINOIS PROFESSIONAL DESIGN FIRM	184-091220
PROFESSIONAL ENGINEERING CORP.	62-033370
PROFESSIONAL STRUCTURAL ENGR. CORP.	81-005292
ILLINOIS PROF. LAND SURVEYING CORP.	048-000293
MISSOURI PROFESSIONAL ENGR. CORP.	MC 001528
MISSOURI LAND SURVEYING CORP.	MC 060346

Signature: _____
 Signature Date: _____
 Expiration Date: _____

STATEMENT OF RESPONSIBILITY
 I hereby confirm that the document herein to be authorized by my seal is restricted to this sheet, and I hereby disclaim any responsibility for all other drawings, specifications, estimates, reports or other documents or instruments relating to or intended to be utilized for any other part of the architectural, engineering or survey project.



- NOTE:
- ANY ROOF DRAIN PIPES ENCOUNTERED CARRYING SURFACE WATER SHALL BE REDIRECTED TO DRAIN INTO STORM SEWER SYSTEM. COST TO BE INCLUDED IN COST OF STORM SEWER.
 - TOP ELEVATIONS REFER TO BACK OF CURB; ELEV (FL) ELEVATIONS REFER TO FLOW LINE OF CURB
 - ALL STORM SEWER PIPE TO BE CLASS 1 TYPE 1 RCP



STA: 0+00 TO STA: 4+80
 DRAINAGE PLAN AND EAST PROFILE
 10-0001-01-PV AND 11-0001-02-PV

PROJECT:
 SHILOH STATION ROAD
 RECONSTRUCTION - PHASE 1 AND 2
 VILLAGE OF SHILOH
 ST. CLAIR COUNTY, ILLINOIS

REV.	DATE	DESCRIPTION

DRAWN BY: NTS	SHEET 11 OF 24 SHEETS
DESIGNED BY: NTS	
CHECKED BY:	PROJECT DESCRIPTION
APPROVED BY:	PROJECT NUMBER
PROJECT NUMBER: T01100602	
<input type="checkbox"/> ISSUED FOR REVIEW	<input checked="" type="checkbox"/> ISSUED FOR BIDDING
<input type="checkbox"/> ISSUED FOR CONSTR.	<input type="checkbox"/> RECORD DRAWING

F:\100602\4-CADD - DWG\2-18\Drawings\Phase 1 & 2 Combined\100602 - Phase 1 - Plan and Profiles, Detail, Drainage, Erosion, Marking and Signage, Wearing.dwg