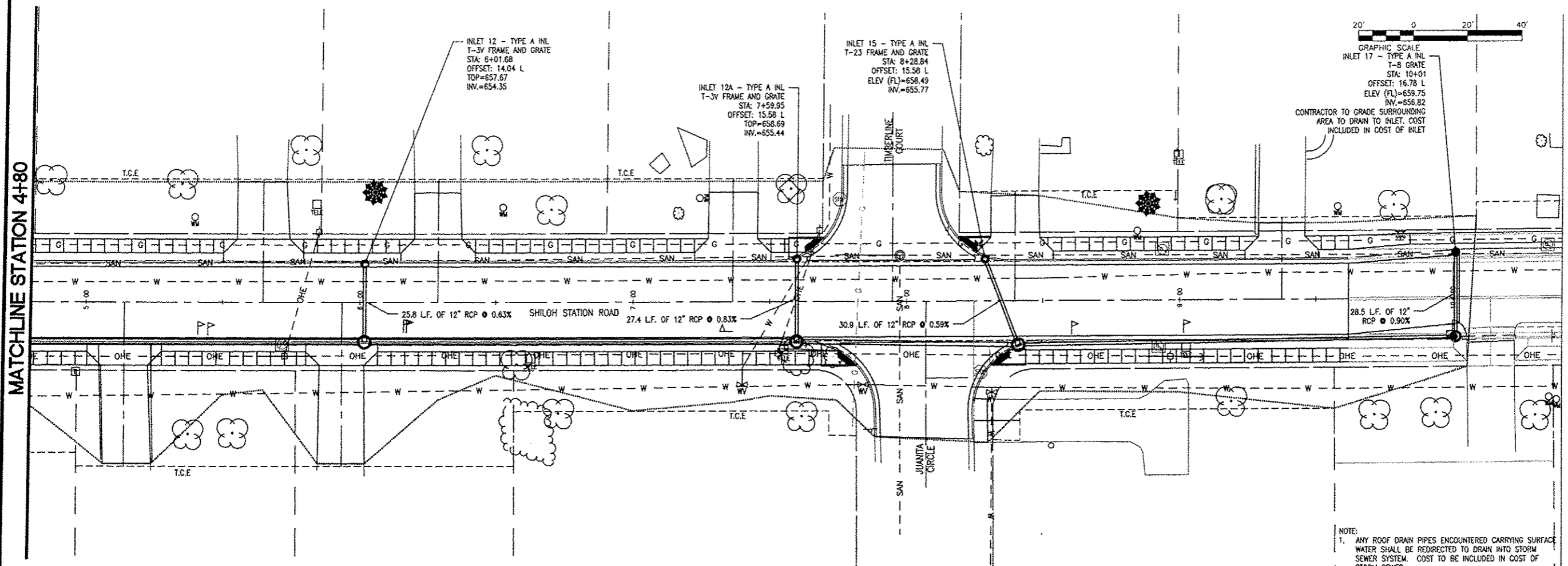


MATCHLINE STATION 4+80



INLET 12 - TYPE A INL
T-3Y FRAME AND GRATE
STA: 6+01.68
OFFSET: 14.04 L
TOP=657.67
INV.=654.35

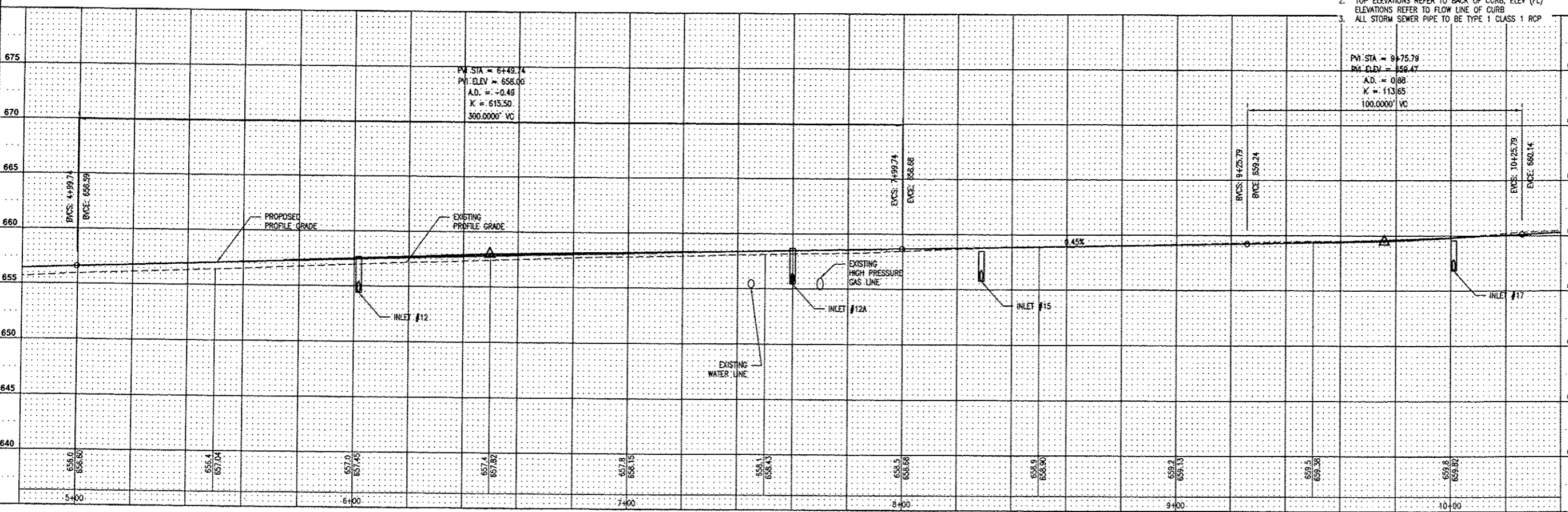
INLET 12A - TYPE A INL
T-3Y FRAME AND GRATE
STA: 7+59.95
OFFSET: 15.58 L
TOP=658.69
INV.=655.44

INLET 15 - TYPE A INL
T-23 FRAME AND GRATE
STA: 8+28.84
OFFSET: 15.58 L
ELEV (FL)=658.49
INV.=655.77

INLET 17 - TYPE A INL
T-8 GRATE
STA: 10+01
OFFSET: 16.78 L
ELEV (FL)=659.75
INV.=656.82
CONTRACTOR TO GRADE SURROUNDING
AREA TO DRAIN TO INLET. COST
INCLUDED IN COST OF INLET

25.8 L.F. OF 12" RCP @ 0.63%
27.4 L.F. OF 12" RCP @ 0.83%
30.9 L.F. OF 12" RCP @ 0.59%
28.5 L.F. OF 12" RCP @ 0.90%

- NOTE:
- ANY ROOF DRAIN PIPES ENCOUNTERED CARRYING SURFACE WATER SHALL BE REDIRECTED TO DRAIN INTO STORM SEWER SYSTEM. COST TO BE INCLUDED IN COST OF STORM SEWER.
 - TOP ELEVATIONS REFER TO BACK OF CURB; ELEV (FL) ELEVATIONS REFER TO FLOW LINE OF CURB
 - ALL STORM SEWER PIPE TO BE TYPE 1 CLASS 1 RCP



PVI STA = 6+49.74
PVI ELEV = 658.00
A.D. = -0.48
K = 615.50
300.0000' VC

PVI STA = 9+75.78
PVI ELEV = 659.47
A.D. = 0.88
K = 113.65
100.0000' VC

THOUVENOT, WADE & MOERCHEN, INC.
ENGINEERS • SURVEYORS • PLANNERS



- CORPORATE OFFICE**
4940 OLD COLLINSVILLE RD.
SWANSEA, ILLINOIS 62226
TEL (618) 624-4488
FAX (618) 624-6608
corp@twm-inc.com
- WATERLOO OFFICE**
113 SOUTH MAIN STREET
WATERLOO, ILLINOIS 62298
TEL (618) 939-5050
FAX (618) 939-3938
waterloo@twm-inc.com
- EDWARDSVILLE OFFICE**
1015B CENTURY DRIVE
EDWARDSVILLE, ILLINOIS 62025
TEL (618) 656-4040
FAX (618) 656-4343
edwardsville@twm-inc.com
- ST. CHARLES OFFICE**
400 N. 5TH STREET, SUITE 101
ST. CHARLES, MISSOURI 63301
TEL (636) 724-8300
FAX (636) 724-8304
stlouis@twm-inc.com

PROFESSIONAL REGISTRATIONS	LICENSE NO.
ILLINOIS PROFESSIONAL DESIGN FIRM	184-001203
PROFESSIONAL ENGINEERING CORP.	62-033370
PROFESSIONAL STRUCTURAL ENGR. CORP.	81-005002
ILLINOIS PROF. LAND SURVEYING CORP.	048-000028
MISSOURI PROFESSIONAL ENGR. CORP.	NC 011518
MISSOURI LAND SURVEYING CORP.	NC 000346

SEAL

Signature: _____
Signature Date: _____
Expiration Date: _____

STATEMENT OF RESPONSIBILITY

I hereby confirm that the documents herein to be authorized by my seal is restricted to this sheet, and I hereby disclaim any responsibility for or other drawings, specifications, estimates, reports or other documents or instruments relating to or intended to be utilized for any other part of the architectural, engineering or survey project.

TITLE: STA: 4+80 TO STA: 10+50
DRAINAGE PLAN AND EAST PROFILE
10-00011-01-PV AND 11-00011-02-PV

PROJECT: SHILOH STATION ROAD
RECONSTRUCTION
VILLAGE OF SHILOH
ST. CLAIR COUNTY, ILLINOIS

REV.	DATE	DESCRIPTION

DRAWN BY: NTS	SHEET
DESIGNED BY: NTS	12
CHECKED BY:	OF 24 SHEETS
APPROVED BY:	PROJECT DESCRIPTION
PROJECT NUMBER: T01100602	
<input type="checkbox"/> ISSUED FOR REVIEW	<input checked="" type="checkbox"/> ISSUED FOR BIDDING
<input type="checkbox"/> ISSUED FOR CONSTR.	<input type="checkbox"/> RECORD DRAWING