

THOUVENOT, WADE & MOERCHEN, INC.
ENGINEERS • SURVEYORS • PLANNERS



CORPORATE OFFICE
4940 OLD COLLINSVILLE RD.
SWANSEA, ILLINOIS 62226
TEL (618) 624-4488
FAX (618) 624-6688
corp@twm-inc.com

WATERLOO OFFICE
113 SOUTH MAIN STREET
WATERLOO, ILLINOIS 62298
TEL (618) 939-5050
FAX (618) 939-3938
waterloo@twm-inc.com

EDWARDSVILLE OFFICE
1015B CENTURY DRIVE
EDWARDSVILLE, ILLINOIS 62025
TEL (618) 656-4040
FAX (618) 656-4343
edwardsville@twm-inc.com

ST. CHARLES OFFICE
400 N. 5TH STREET, SUITE 101
ST. CHARLES, MISSOURI 63301
TEL (636) 724-8300
FAX (636) 724-8304
stlouis@twm-inc.com

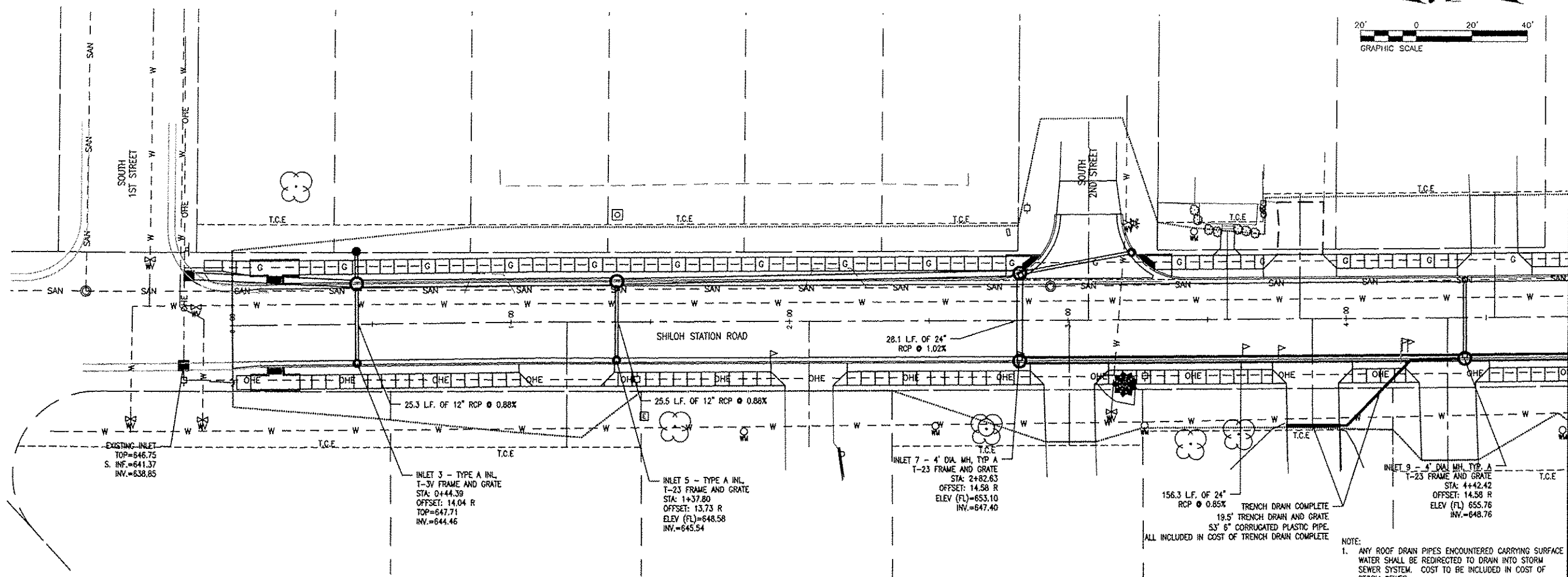
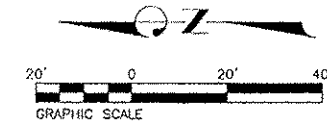
PROFESSIONAL REGISTRATIONS	LICENSE NO.
ILLINOIS PROFESSIONAL DESIGN FIRM	164-001220
PROFESSIONAL ENGINEERING CORP.	62-035370
PROFESSIONAL STRUCTURAL ENGR. CORP.	81-005202
ILLINOIS PROF. LAND SURVEYING CORP.	048-000029
MISSOURI PROFESSIONAL ENGR. CORP.	HC 001528
MISSOURI LAND SURVEYING CORP.	HC 000346

SEAL

Signature: _____
Signature Date: _____
Expiration Date: _____

STATEMENT OF RESPONSIBILITY

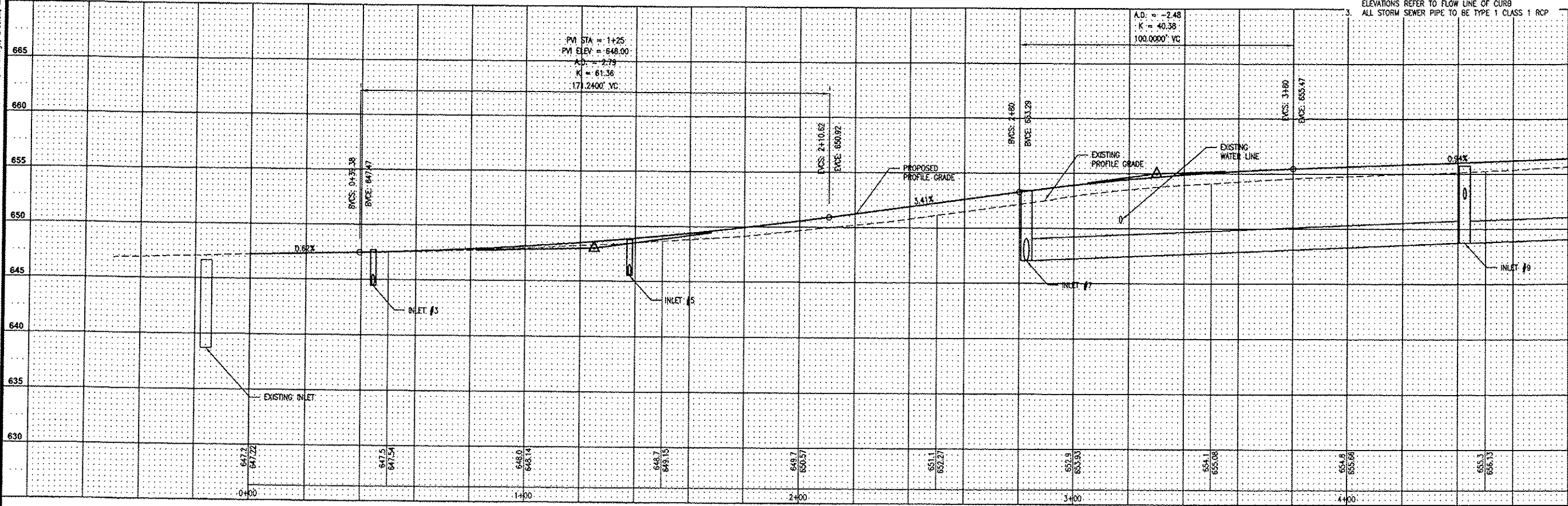
I hereby confirm that the document herein to be authorized by my seal is restricted to this sheet, and I hereby disclaim any responsibility for other drawings, specifications, estimates, reports or other documents or instruments relating to or intended to be utilized for any other part of the architectural, engineering or survey project.



- NOTE:
- ANY ROOF DRAIN PIPES ENCOUNTERED CARRYING SURFACE WATER SHALL BE REDIRECTED TO DRAIN INTO STORM SEWER SYSTEM. COST TO BE INCLUDED IN COST OF STORM SEWER.
 - TOP ELEVATIONS REFER TO BACK OF CURB; ELEV (FL) ELEVATIONS REFER TO FLOW LINE OF CURB
 - ALL STORM SEWER PIPE TO BE TYPE 1 CLASS 1 RCP

MATCHLINE STATION 4+80

P:\100602\4-CAD - DWG\4.2-TR Drawings\Phase 1 & 2 Combined\100602 - Phase 1 - Plan and Profiles, Detail, Drainage, Erosion, Marking and Signage, Mapping.dwg



TITLE: STA: 0+00 TO STA: 4+80
DRAINAGE PLAN AND WEST PROFILE
10-0001-01-PV AND 11-00011-02-PV

PROJECT: SHILOH STATION ROAD
RECONSTRUCTION - PHASE 1 AND 2
VILLAGE OF SHILOH
ST. CLAIR COUNTY, ILLINOIS

REV.	DATE	DESCRIPTION

DRAWN BY: NTS
DESIGNED BY: NTS
CHECKED BY: _____
APPROVED BY: _____

SHEET
13
OF 24 SHEETS

PROJECT DESCRIPTION
PROJECT NUMBER: T01100602

ISSUED FOR REVIEW ISSUED FOR BIDDING
 ISSUED FOR CONSTR. RECORD DRAWING