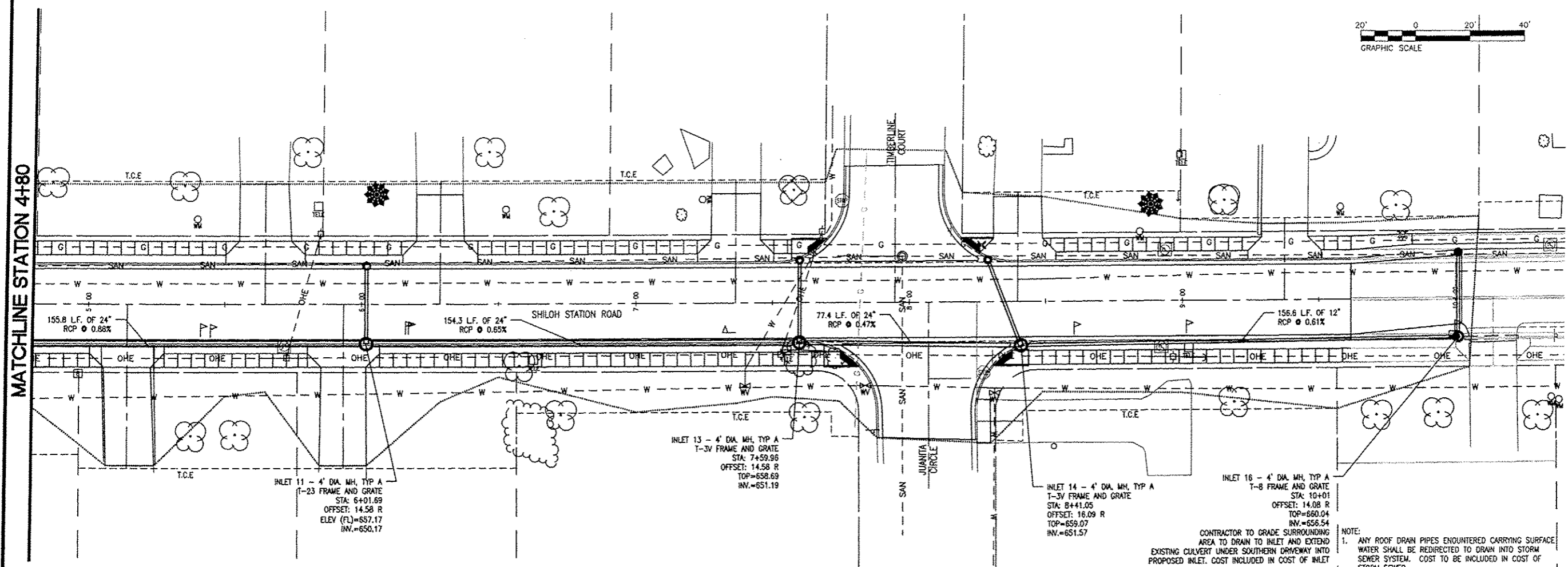
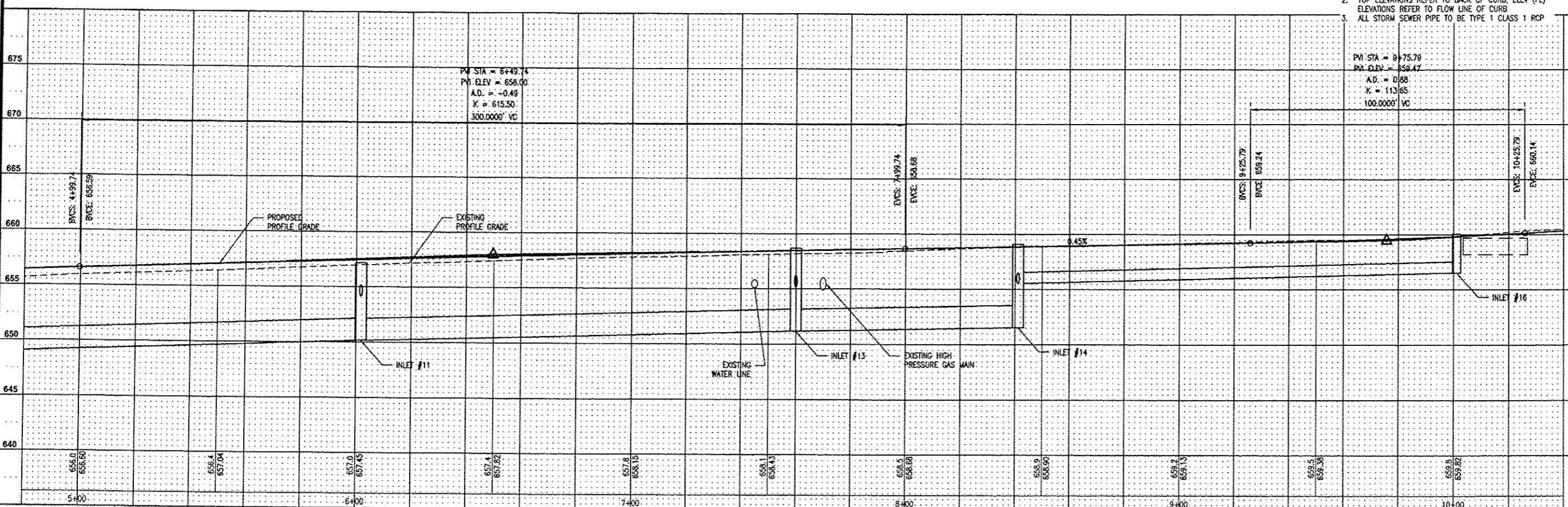


MATCHLINE STATION 4+80



CONTRACTOR TO GRADE SURROUNDING AREA TO DRAIN TO INLET AND EXTEND EXISTING CULVERT UNDER SOUTHERN DRIVEWAY INTO PROPOSED INLET. COST INCLUDED IN COST OF INLET.

NOTE:
1. ANY ROOF DRAIN PIPES ENCOUNTERED CARRYING SURFACE WATER SHALL BE REDIRECTED TO DRAIN INTO STORM SEWER SYSTEM. COST TO BE INCLUDED IN COST OF STORM SEWER.
2. TOP ELEVATIONS REFER TO BACK OF CURB; ELEV (FL) ELEVATIONS REFER TO FLOW LINE OF CURB
3. ALL STORM SEWER PIPE TO BE TYPE 1 CLASS 1 RCP



THOUVENOT, WADE & MOERCHEN, INC.
ENGINEERS • SURVEYORS • PLANNERS



- ☑ **CORPORATE OFFICE**
4940 OLD COLLINSVILLE RD.
SWANSEA, ILLINOIS 62226
TEL (618) 624-4488
FAX (618) 624-6688
corp@twm-inc.com
- ☐ **WATERLOO OFFICE**
113 SOUTH MAIN STREET
WATERLOO, ILLINOIS 62298
TEL (618) 939-5050
FAX (618) 939-3938
waterloo@twm-inc.com
- ☐ **EDWARDSVILLE OFFICE**
1015B CENTURY DRIVE
EDWARDSVILLE, ILLINOIS 62025
TEL (618) 656-4040
FAX (618) 656-4343
edwardsville@twm-inc.com
- ☐ **ST. CHARLES OFFICE**
400 N. 5TH STREET, SUITE 101
ST. CHARLES, MISSOURI 63301
TEL (636) 724-8300
FAX (636) 724-8304
stlouis@twm-inc.com

PROFESSIONAL REGISTRATIONS	LICENSE NO.
ILLINOIS PROFESSIONAL DESIGN FIRM	184-001220
PROFESSIONAL ENGINEERING CORP.	62-053370
PROFESSIONAL STRUCTURAL ENGR. CORP.	81-005202
ILLINOIS PROF. LAND SURVEYING CORP.	048-000029
MISSOURI PROFESSIONAL ENGR. CORP.	MC 001528
MISSOURI LAND SURVEYING CORP.	MC 000346

Signature: _____
Signature Date: _____
Expiration Date: _____

STATEMENT OF RESPONSIBILITY

I hereby confirm that the document herein to be authorized by my seal is restricted to this sheet, and I hereby disclaim any responsibility for other drawings, specifications, estimates, reports or other documents or instruments relating to or intended to be utilized for any other part of the architectural, engineering or survey project.

TITLE: STA: 4+80 TO STA: 10+50
DRAINAGE PLAN AND WEST PROFILE
10-00011-01-PV AND 11-00011-02-PV

PROJECT: SHILOH STATION ROAD
RECONSTRUCTION - PHASE 1 AND 2
VILLAGE OF SHILOH
ST. CLAIR COUNTY, ILLINOIS

REV	DATE	DESCRIPTION
△		
△		
△		

DRAWN BY: _____	NTS	SHEET 14 OF 24 SHEETS
DESIGNED BY: _____	NTS	
CHECKED BY: _____		PROJECT DESCRIPTION
APPROVED BY: _____		PROJECT NUMBER
		T01100602
ISSUED FOR REVIEW	ISSUED FOR BIDDING	
ISSUED FOR CONSTR.	RECORD DRAWING	