

THOUVENOT, WADE & MOERCHEN, INC.
ENGINEERS • SURVEYORS • PLANNERS



CORPORATE OFFICE
4940 OLD COLLINSVILLE RD.
SWANSEA, ILLINOIS 62226
TEL (618) 624-4488
FAX (618) 624-6688
corp@twm-inc.com

WATERLOO OFFICE
113 SOUTH MAIN STREET
WATERLOO, ILLINOIS 62298
TEL (618) 939-5050
FAX (618) 939-3938
waterloo@twm-inc.com

EDWARDSVILLE OFFICE
1015B CENTURY DRIVE
EDWARDSVILLE, ILLINOIS 62025
TEL (618) 656-4040
FAX (618) 656-4343
edwardsville@twm-inc.com

ST. CHARLES OFFICE
400 N. 5TH STREET, SUITE 101
ST. CHARLES, MISSOURI 63301
TEL (636) 724-8300
FAX (636) 724-8304
stlouis@twm-inc.com

PROFESSIONAL REGISTRATIONS	LICENSE NO.
ILLINOIS PROFESSIONAL DESIGN FIRM	184-00120
PROFESSIONAL ENGINEERING CORP.	62-033370
PROFESSIONAL STRUCTURAL ENGR. CORP.	81-005029
ILLINOIS PROF. LAND SURVEYING CORP.	648-000228
MISSOURI PROFESSIONAL ENGR. CORP.	MC 001528
MISSOURI LAND SURVEYING CORP.	MC 000346

SEAL

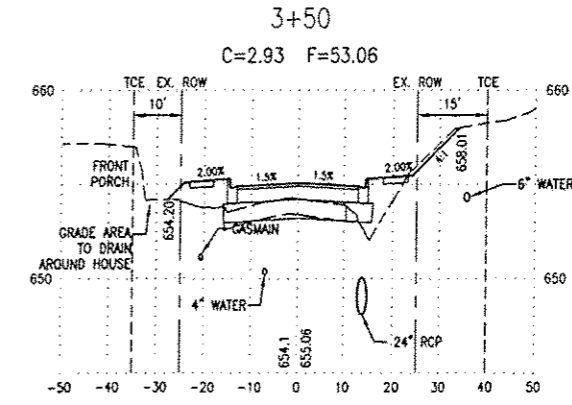
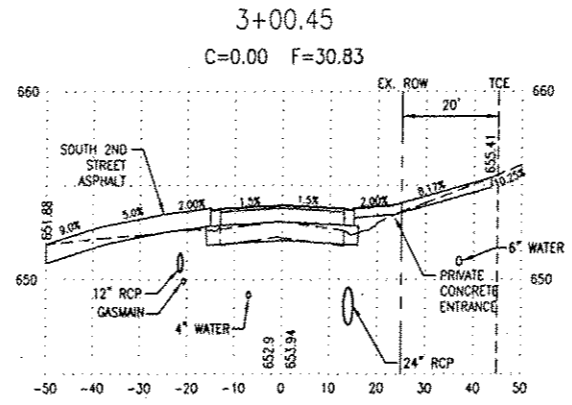
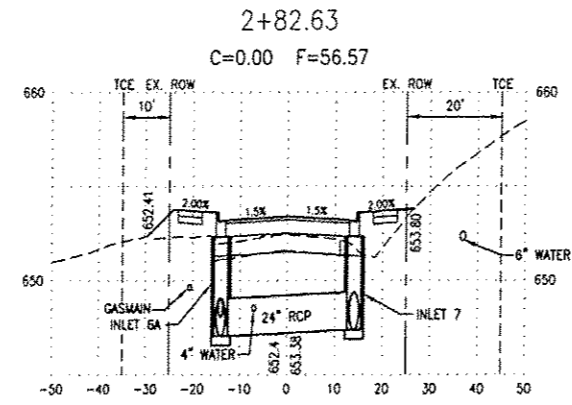
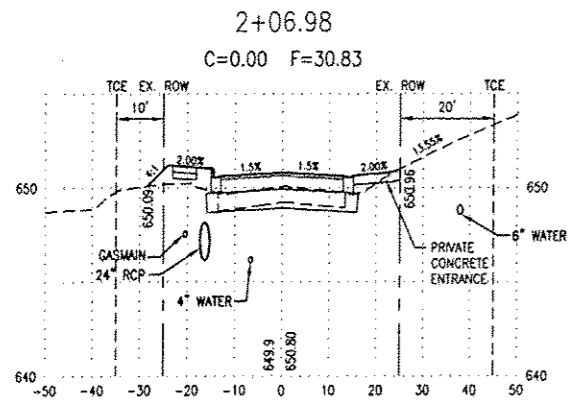
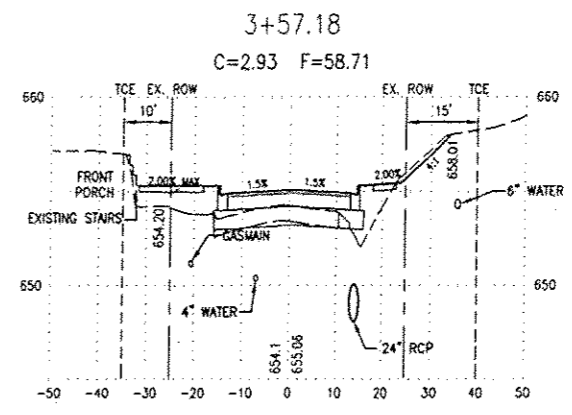
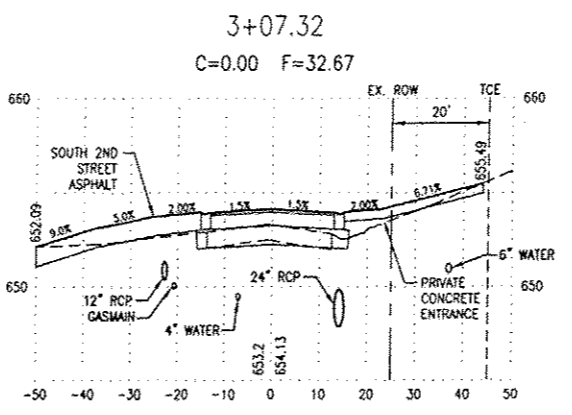
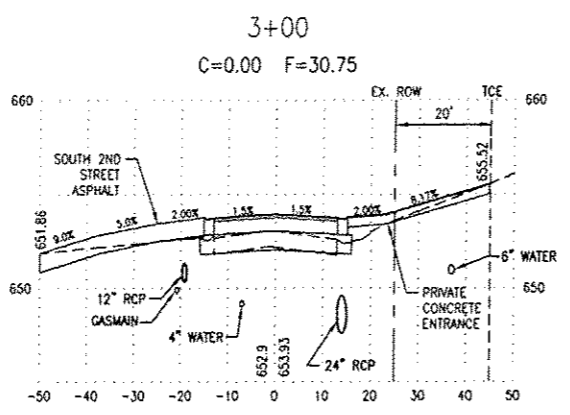
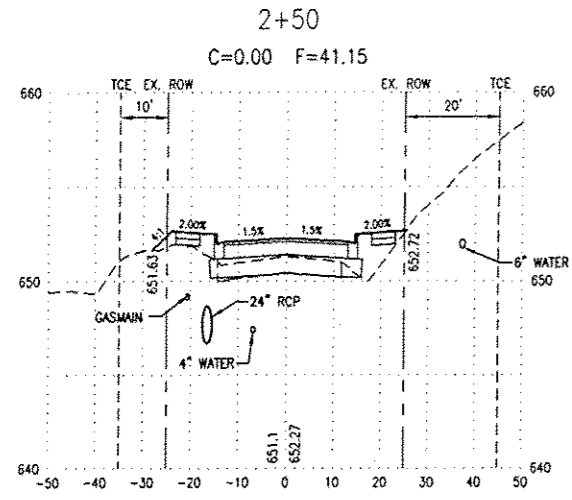
Signature: _____
Expiration Date: _____

STATEMENT OF RESPONSIBILITY
I hereby confirm that the document herein to be authenticated by my seal is restricted to this sheet, and I hereby disclaim any responsibility for all other drawings, specifications, estimates, reports or other documents or instruments relating to or intended to be utilized for any other part of the architectural, engineering or survey project.

TITLE: **SHILOH STATION ROAD CROSS SECTIONS 10-00011-01-PV AND 11-00011-02-PV**
PROJECT: **SHILOH STATION ROAD RECONSTRUCTION - PHASE 1 AND 2 VILLAGE OF SHILOH ST. CLAIR COUNTY, ILLINOIS**

REV	DATE	DESCRIPTION
△		
△		
△		

DRAWN BY: _____	NTS	SHEET 20
DESIGNED BY: _____	NTS	
CHECKED BY: _____		OF 24 SHEETS
APPROVED BY: _____		PROJECT DESCRIPTION
PROJECT NUMBER: TO1100602		
<input type="checkbox"/> ISSUED FOR REVIEW	<input checked="" type="checkbox"/> ISSUED FOR BIDDING	
<input type="checkbox"/> ISSUED FOR CONSTR.	<input type="checkbox"/> RECORD DRAWING	



SCALE
1:4 VERTICAL
1:20 HORIZONTAL

NOTES:
1. ALL STORM SEWER SHOWN IS PROPOSED
2. ALL OTHER UTILITIES SHOWN ARE EXISTING