

STATE OF ILLINOIS  
DEPARTMENT OF TRANSPORTATION  
DIVISION OF HIGHWAYS  
**PLANS FOR PROPOSED**

F.A. RTE.	SECTION	COUNTY	TOTAL SHEETS	SHEET NO.
	10-00094-00-SW	MADISON	35	1
FEDERAL AID PROJECT		ILLINOIS	CONTRACT NO. 97512	

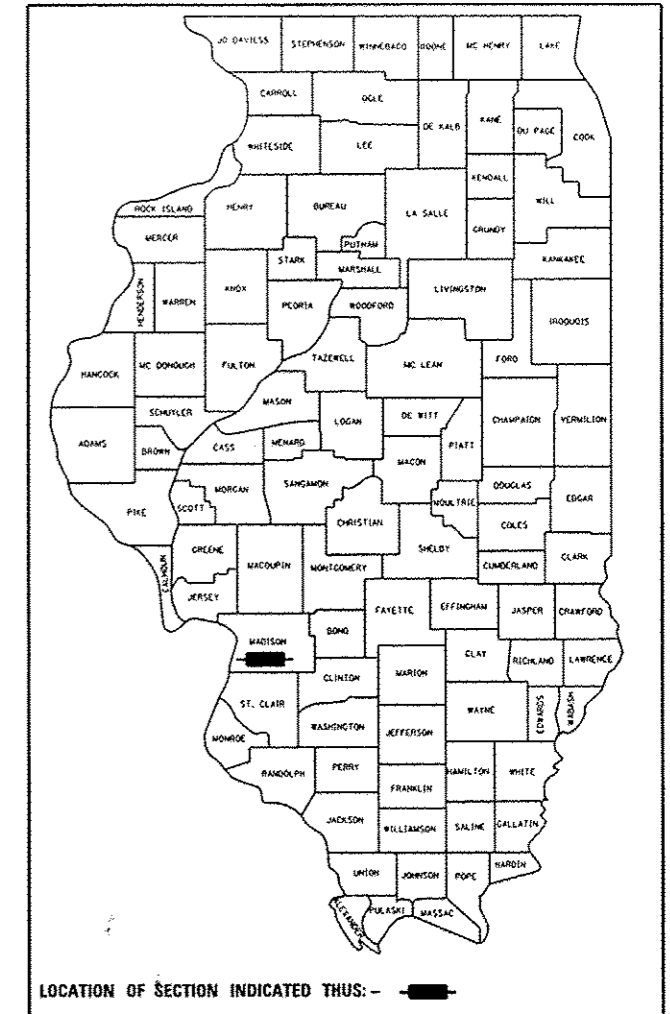
**INDEX OF SHEETS**

SHEET NO.	ITEM
1	COVER SHEET
2	GENERAL NOTES
3-4	SUMMARY OF QUANTITIES
5-6	TYPICAL SECTIONS
7-8	SCHEDULE OF QUANTITIES
9-16	PLAN & PROFILE SHEETS
17-20	RIGHT OF WAY PLAN SHEETS
21	RETAINING WALL DETAILS
22-24	CONSTRUCTION DETAILS
25-34	CROSS SECTIONS - CAMELOT DRIVE
35	CROSS SECTIONS - KING ARTHUR COURT

**HIGHWAY STANDARDS**

000001-06	STANDARD SYMBOLS, ABBREVIATIONS AND PATTERNS
280001-07	TEMPORARY EROSION CONTROL SYSTEMS
424001-07	PERPENDICULAR CURB RAMPS
424011-01	CORNER PARALLEL CURB RAMPS
424016-01	MID BLOCK CURB RAMPS
542301-03	PRECAST REINFORCED CONCRETE FLARED END SECTION
602401-03	MANHOLE TYPE A
602601-02	PRECAST REINFORCED CONCRETE FLAT SLAB TOP
602701-02	MANHOLE STEPS
604001-03	FRAME AND LIDS TYPE 1
606001-05	CONCRETE CURB TYPE B AND COMBINATION CONCRETE CURB AND GUTTER
701301-04	LANE CLOSURE, 2L, 2W, SHORT TIME OPERATIONS
701501-06	URBAN LANE CLOSURE, 2L, 2W, UNDIVIDED
701801-05	LANE CLOSURE MULTILANE 1W OR 2W CROSSWALK OR SIDEWALK CLOSURE
701901-02	TRAFFIC CONTROL DEVICES
720001-01	SIGN PANEL MOUNTING DETAILS
720006-03	SIGN PANEL ERECTION DETAILS
720011-01	METAL POSTS FOR SIGNS, MARKERS & DELINEATORS
729001-01	APPLICATIONS OF TYPES A & B METAL POSTS (FOR SIGNS & MARKERS)
780001-03	TYPICAL PAVEMENT MARKINGS

**CITY OF COLLINSVILLE  
CAMELOT DRIVE  
SIDEWALK IMPROVEMENTS  
SECTION 10-00094-00-SW  
MADISON COUNTY  
PROJECT NO. SRTS-4009(107)  
JOB NO. C-40-102-09**



**SCALE IN FEET**

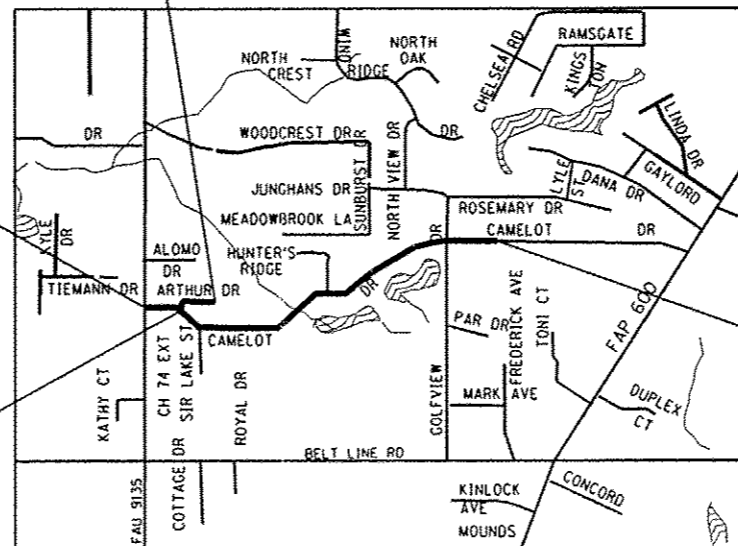
PLAN	1" = 20'
PROFILE HORIZ	1" = 20'
PROFILE VERT	1" = 5'
CROSS SECTION	1" = 10'

**END KING ARTHUR CT  
STA. 103 + 59.23**

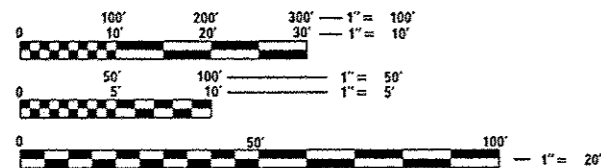
**BEGIN CAMELOT DR  
STA. 10 + 00.00**

**END CAMELOT DR  
STA. 46 + 28.74**

**BEGIN KING ARTHUR CT  
STA. 100 + 00.00**



**LOCATION MAP  
SCALE 1" = 1,500'**



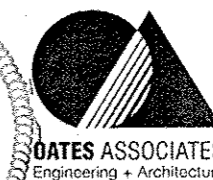
FULL SIZE PLANS HAVE BEEN PREPARED USING STANDARD ENGINEERING SCALES. REDUCED SIZED PLANS WILL NOT CONFORM TO STANDARD SCALES. IN MAKING MEASUREMENTS ON REDUCED PLANS, THE ABOVE SCALES MAY BE USED.

J.U.L.I.E.  
JOINT UTILITY LOCATION INFORMATION FOR EXCAVATION  
1-800-892-0123  
OR 811

**DESIGN DESIGNATION**  
LOCAL ROAD

CAMELOT DRIVE IMPROVEMENTS = 3,628.74 FT. = 0.687 MILE  
KING ARTHUR COURT IMPROVEMENTS = 359.23 FT. = 0.068 MILE  
NET LENGTH = 3,987.97 FT. = 0.755 MILE

*Philip A. Murphy*  
PHILIP A. MURPHY, P.E.  
License Expires 11/30/2013



ILLINOIS  
Eastport Business Center 1  
100 Lanier Court, Suite 1  
Collinsville, IL 62234  
tel 618.345.2200  
fax 618.345.7233  
www.oatesassociates.com

MISSOURI  
Laclede Gas Building  
720 Olive, Suite 1680  
St. Louis, MO 63101  
tel 314.588.8311  
fax 314.588.9605

STATE OF ILLINOIS  
DEPARTMENT OF TRANSPORTATION  
DIVISION OF HIGHWAYS

APPROVED: *John Miller* 12-27-2012 DATE  
JOHN MILLER MAYOR OF COLLINSVILLE

PASSED: *Philip A. Murphy* Feb 7 2013 DATE  
DISTRICT PROJECT IMPLEMENTATION ENGINEER

RELEASING FOR BID  
BASED ON LIMITED  
REVIEW: *John Miller* 2/7/2013 DATE  
OWNER-CORPORATE, P.E. DEPUTY DIRECTOR OF HIGHWAYS REGION FIVE ENGINEER

**PRINTED BY THE AUTHORITY  
OF THE STATE OF ILLINOIS**