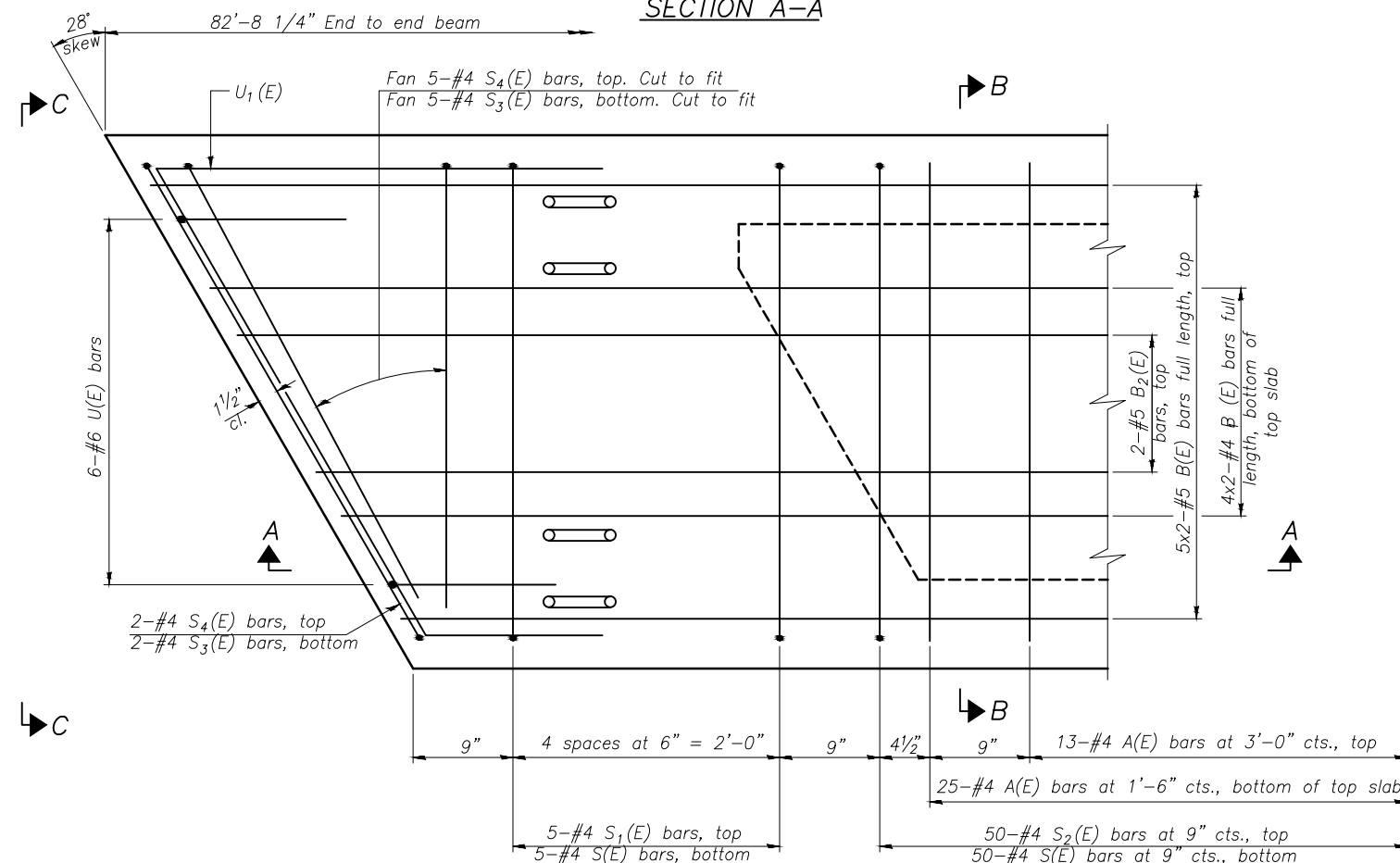


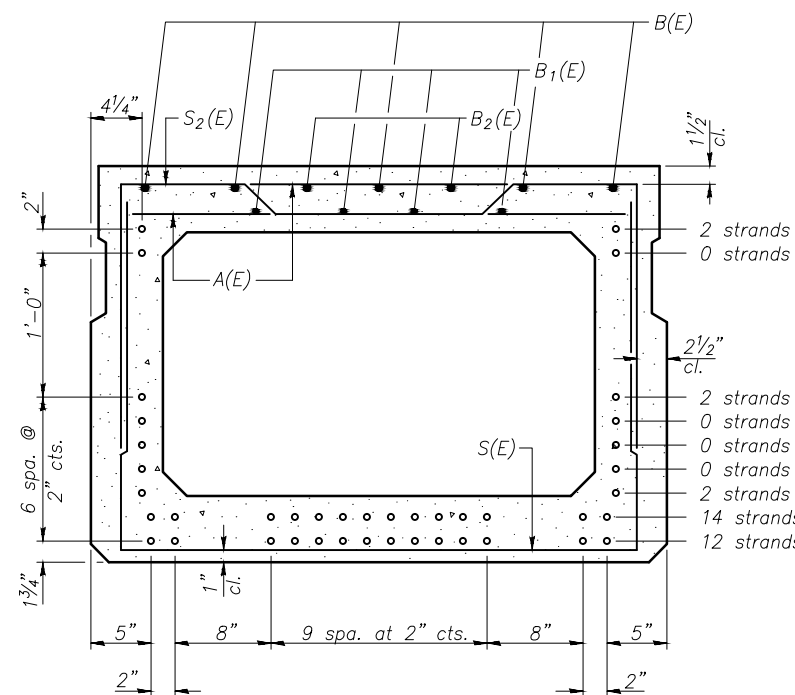
SECTION A-A

SECTION B-B
(Showing dimensions)

VIEW C-C



PLAN VIEW



SECTION B-B

(Showing reinforcement and permissible strand locations)
Note: Place the number of strands specified in each row symmetrically about the centerline of beam in the permissible strand locations shown.

BAR LIST
ONE BEAM ONLY
(For information only)

Bar	No.	Size	Length	Shape
A(E)	76	#4	3'-7"	—
B(E)	10	#5	42'-6"	—
B1(E)	8	#4	42'-3"	—
B2(E)	4	#5	10'-0"	—
S(E)	109	#4	8'-5"	—
S1(E)	10	#4	7'-3"	┌
S2(E)	109	#4	7'-6"	┌
S3(E)	14	#4	6'-5"	┌
S4(E)	14	#4	6'-10"	┌
U(E)	12	#6	5'-0"	┌
U1(E)	6	#4	8'-4"	┌

Note: See sheet 4 of 10 for additional details and Bill of Material.

Note: Spacing of S(E) and S2(E) bars may be adjusted up to 4" in the immediate area of the transverse tie diaphragms to miss the block outs for the transverse ties.

MINIMUM BAR LAP
#4 bar = 2'-0"
#5 bar = 2'-6"

PD-3348-R 7-1-10

CHAMLIN & ASSOCIATES, INC. © 2012. Drawing Name: H:\A\08\11\002-86\PERU BRIDGE PLANS\03-4-5-8-DETAILS.dwg Last Modified: Mar 08, 2013 - 2:19pm Plotted on: Mar 08, 2013 - 3:25pm by mark

LEVEL	BY	DATE	DESCRIPTION
1	MAB	3/8/13	REVISED PER IDA COMMENTS

CHAMLIN & ASSOCIATES
PERU MORRIS ILLINOIS

MORRIS AIRPORT ACCESS ROAD
CITY OF MORRIS, GRUNDY COUNTY, ILLINOIS

33" x 48" PPC DECK BEAM DETAILS
STRUCTURE NO. 032-7013
SHEET NO. 3 OF 10 SHEETS

APPROVED FOR CONSTRUCTION
CURRENT AS OF: 3/8/13
SCALE: AS NOTED SHEET 24
FILE NO.: 1002.86 OF 38