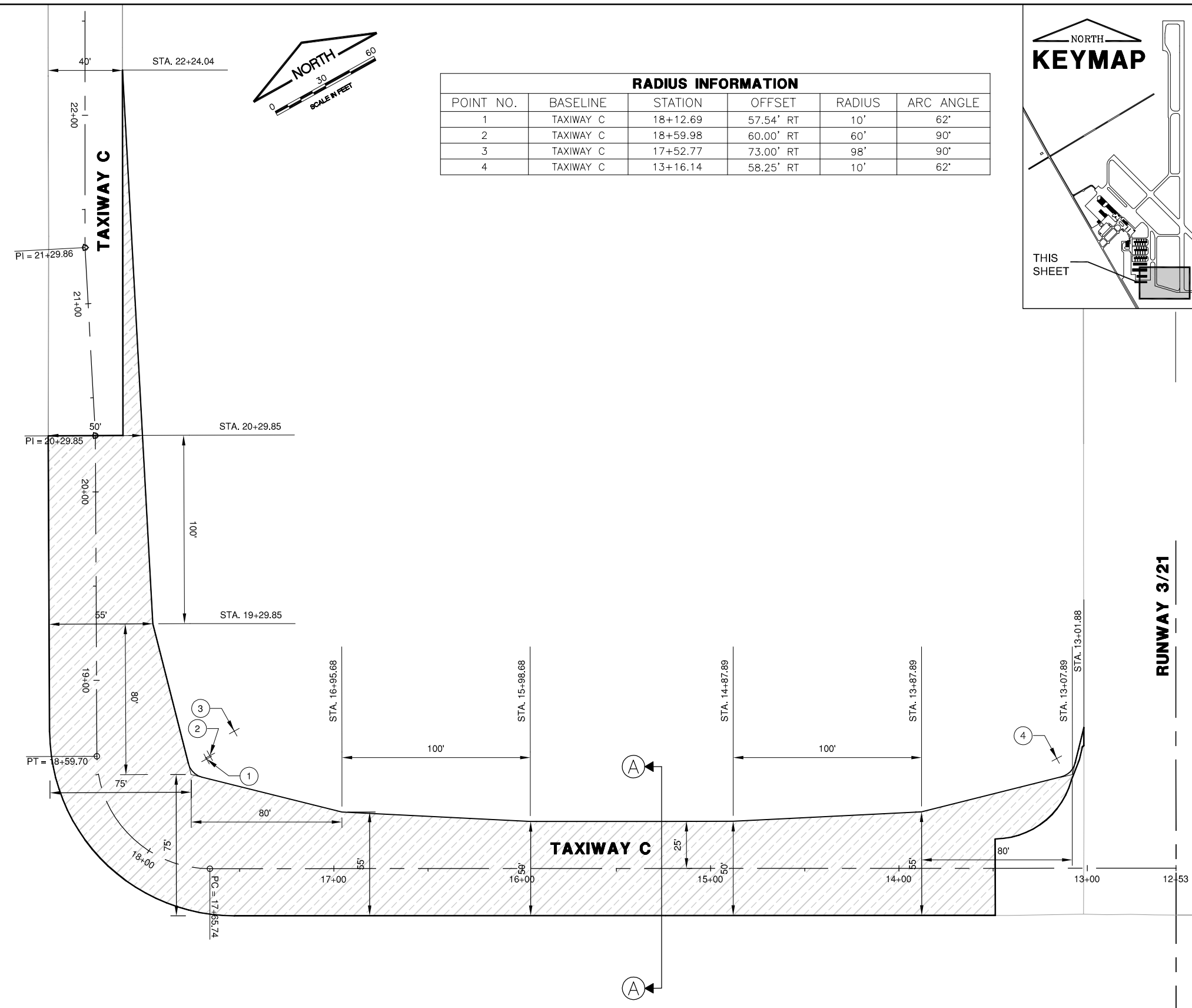
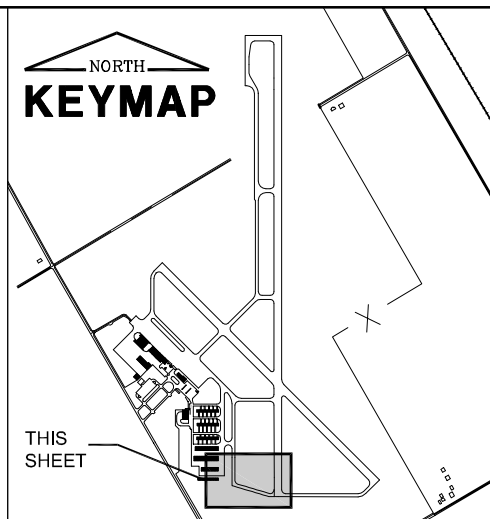


T HANGAR TAXILANE



RADIUS INFORMATION					
POINT NO.	BASELINE	STATION	OFFSET	RADIUS	ARC ANGLE
1	TAXIWAY C	18+12.69	57.54' RT	10'	62'
2	TAXIWAY C	18+59.98	60.00' RT	60'	90'
3	TAXIWAY C	17+52.77	73.00' RT	98'	90'
4	TAXIWAY C	13+16.14	58.25' RT	10'	62'

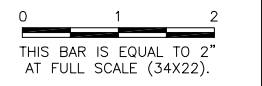


FILE: PROPIMP.dwg
 UPDATE BY: Andrew Bodine
 PLOT DATE: 3/6/2013 2:23 PM

DNVBase_StatePlane
 C:\SPAL
 BASE: PROP.GEO
 Keymap
 tempgeo

VE048

REVISIONS		
NUMBER	BY	DATE



VERMILION REGIONAL AIRPORT
 VERMILION REGIONAL AIRPORT AUTHORITY
 DANVILLE, ILLINOIS

RELOCATE TAXIWAY C AND WIDEN FILLETS
 PROPOSED IMPROVEMENTS

© Copyright CMT, Inc.
CMT
 CRAWFORD, MURPHY & TILLY, INC.
 CONSULTING ENGINEERS
 License No. 184-000613

DESIGN BY:	AJB
DRAWN BY:	CMT
CHECKED BY:	CET
APPROVED BY:	CET
DATE:	MARCH 1, 2013
JOB No:	120420100
IL PROJ. NO.	DNV-4229
SBG PROJ. NO.	3-17-0032-B14
SHEET	09 OF 27 SHEETS

NOTES:
 SEE SITE PLAN FOR BASELINE INFORMATION.

LEGEND

- 3" BITUMINOUS SURFACE COURSE (401)
- 4" BITUMINOUS BASE COURSE (403)
- 12" CRUSHED AGGREGATE BASE COURSE (209)
- NEW COMPACTED SUBGRADE (152)

K:\Dmerville\12042010\Draw\Sheets