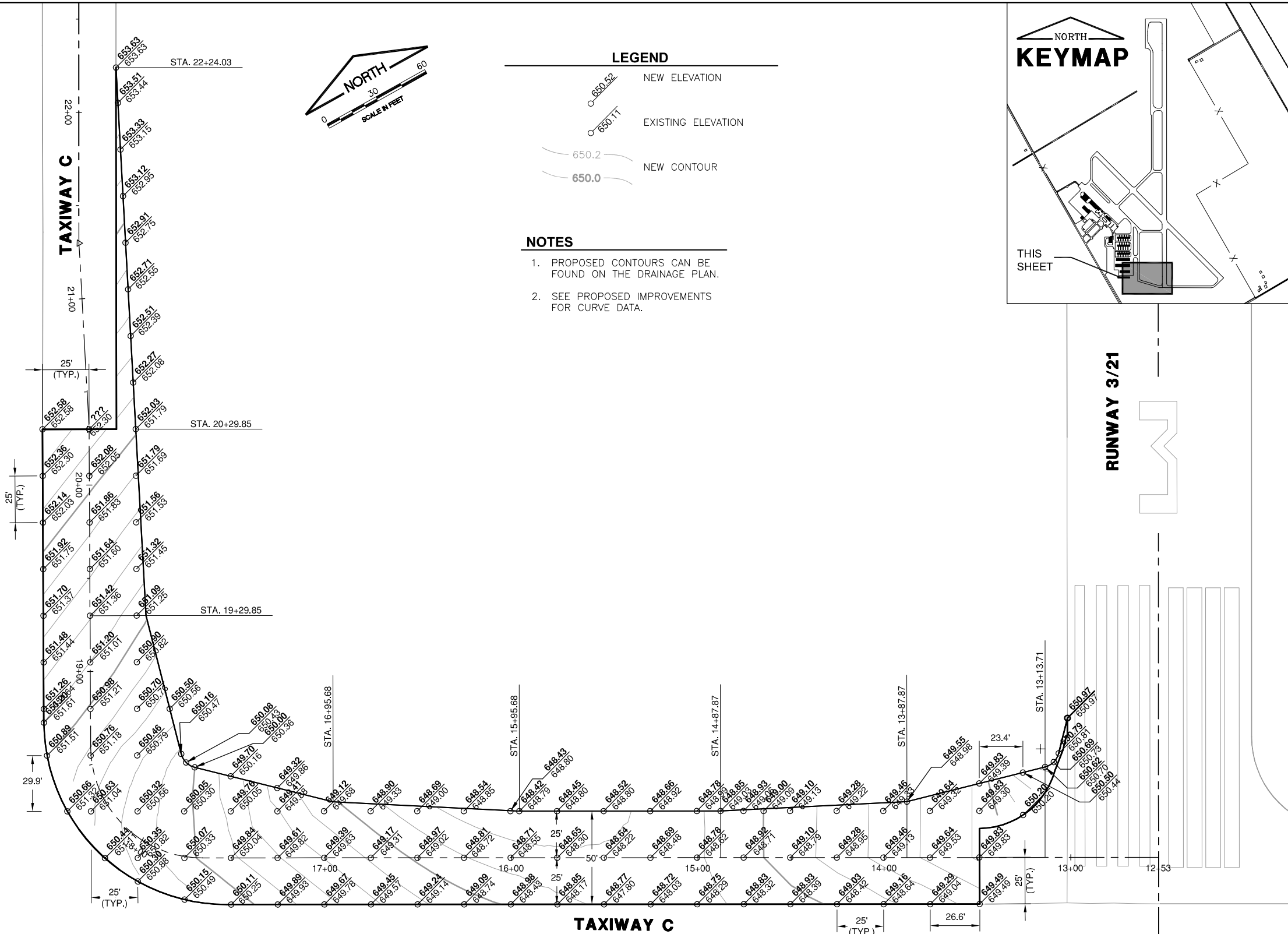


T HANGAR TAXILANE



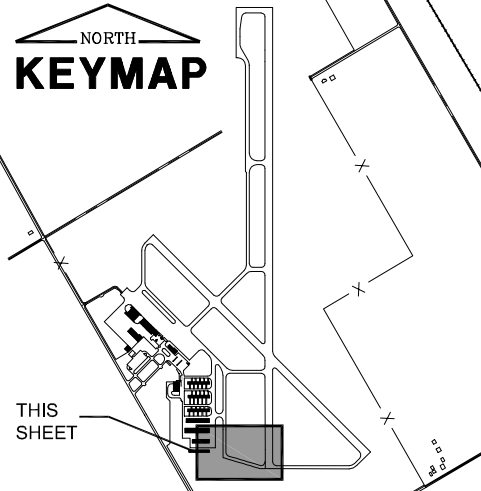
LEGEND

- NEW ELEVATION
- EXISTING ELEVATION
- NEW CONTOUR
- EXISTING CONTOUR

NOTES

1. PROPOSED CONTOURS CAN BE FOUND ON THE DRAINAGE PLAN.
2. SEE PROPOSED IMPROVEMENTS FOR CURVE DATA.

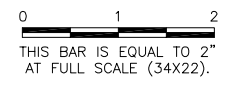
KEYMAP



FILE: STAKING01.dwg
 UPDATE BY: Andrew Bodine
 PLOT DATE: 3/6/2013 2:25 PM

VE048

| REVISIONS | | |
|-----------|----|------|
| NUMBER | BY | DATE |
| | | |
| | | |
| | | |



**VERMILION REGIONAL AIRPORT
 VERMILION REGIONAL AIRPORT AUTHORITY
 DANVILLE, ILLINOIS**

**RELOCATE TAXIWAY C AND WIDEN FILLETS
 STAKING PLAN 1**

© Copyright CMT, Inc.
CMT
 CRAWFORD, MURPHY & TILLY, INC.
 CONSULTING ENGINEERS
 License No. 184-000613

| | |
|-----------------------------|---------------|
| DESIGN BY: | AJB |
| DRAWN BY: | CMT |
| CHECKED BY: | CET |
| APPROVED BY: | CET |
| DATE: | MARCH 1, 2013 |
| JOB No: | 120420100 |
| IL PROJ. NO. DNV-4229 | |
| SBG PROJ. NO. 3-17-0032-B14 | |
| SHEET 12 OF 27 SHEETS | |

K:\Dmville\12042010\Draw\Sheets