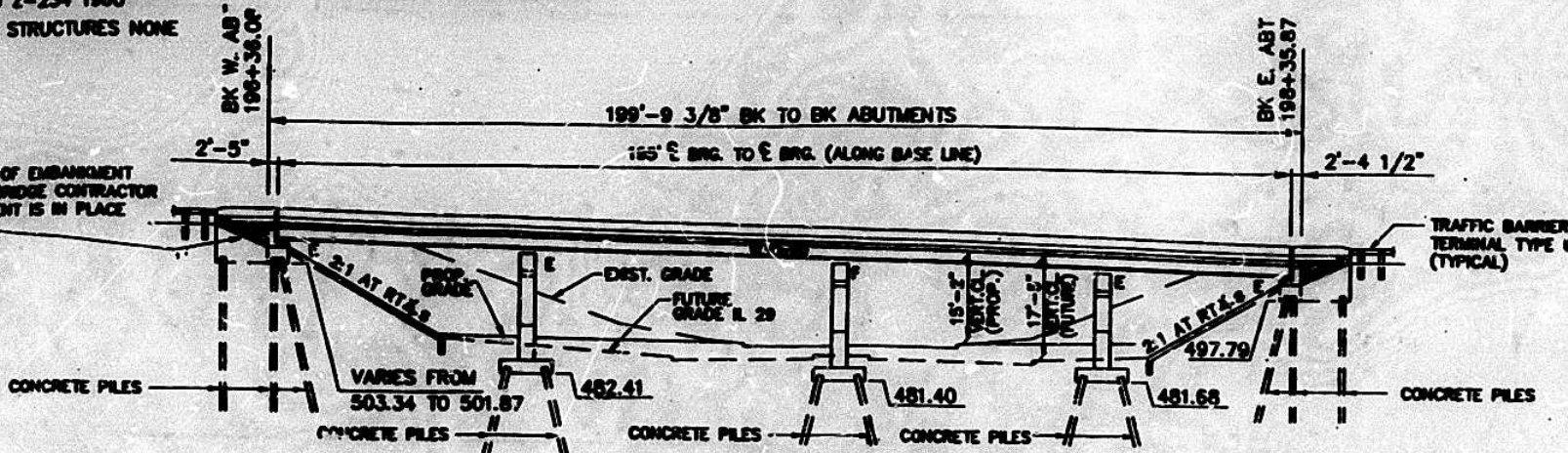


B.M.: U.S.C. & G.S. Z-234 ELEV. 473.874 STANDARD BRASS DISK SET VERTICALLY IN E. FACE OF WESTERMOST PIER OF EAST BOUND McCLOGGAGE BRIDGE. STAMPED Z-234 1980

EXISTING STRUCTURES NONE

THIS PORTION OF EMBANKMENT BACKFILL BY BRIDGE CONTRACTOR AFTER ABUTMENT IS IN PLACE (TYPICAL)



ELEVATION (LOOKING NORTH)

DESIGN SPECIFICATIONS

1999 AASHTO, 1990 AND 1991 INTERIM SEISMIC ACCELERATION COEFFICIENT = 0.04

LOADING 1'S 20-44

ALLOW 254/SQ. FT. FOR FUTURE WEARING SURFACE

DESIGN STRESSES

$F_c = 3,500$ PSI
 $F_y = 60,000$ PSI (REINF.)
 $F_y = 50,000$ PSI (M270 GRADE 50) STRUCTURAL STEEL
 $F_y = 36,000$ PSI (M270 GRADE 36) STRUCTURAL STEEL

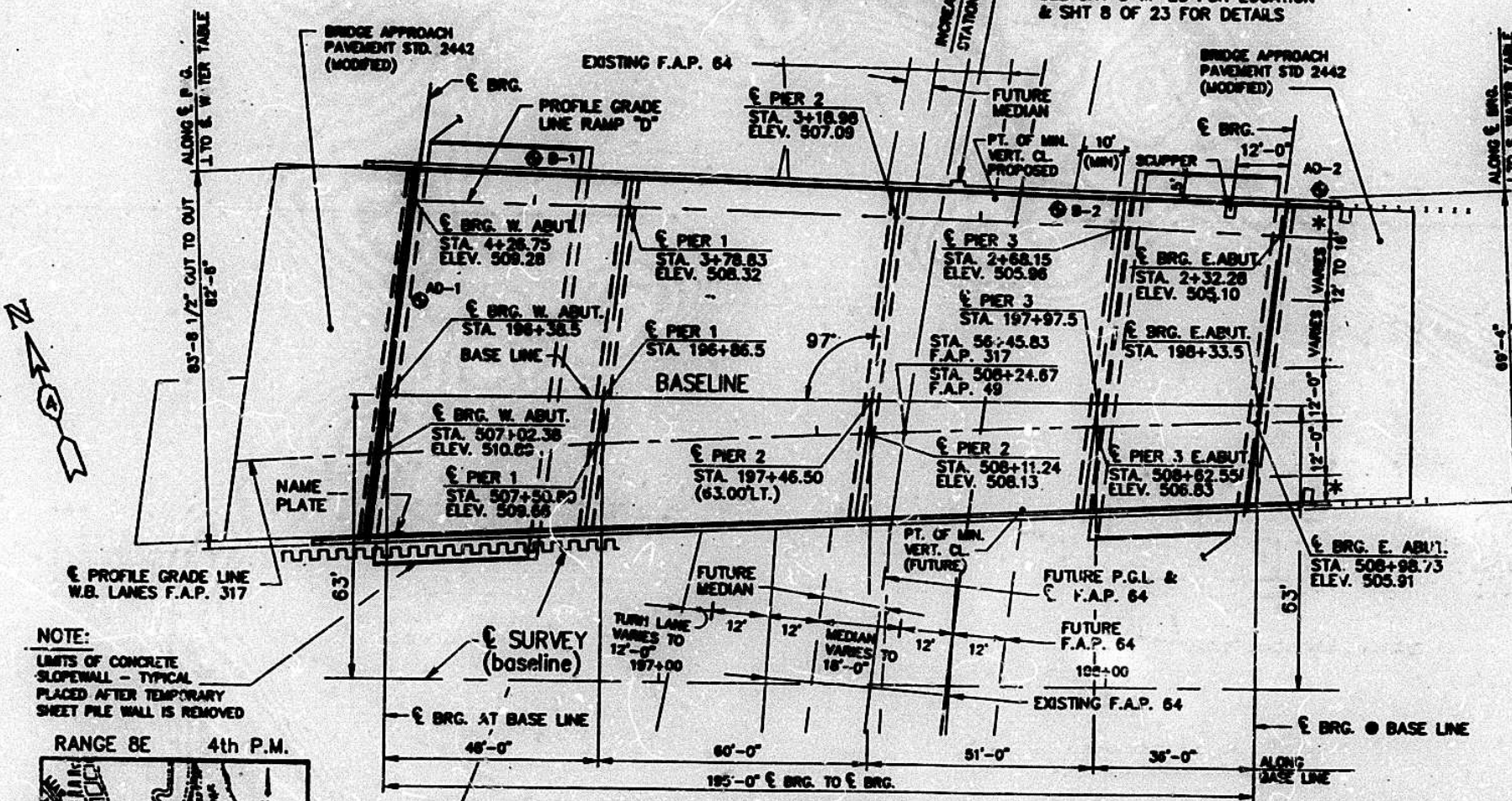
FOR INFORMATION ONLY

"As built with Contract No. 88154 in 1994 and 1995"

ROUTE NO.	SECTION	COUNTY	TOTAL SHEETS	SHE NO.
FAP 317	14HB-1	PEORIA		17
		ILLINOIS		FED. AID PROJ.

GENERAL NOTES

- FASTENERS SHALL BE HIGH STRENGTH BOLTS. BOLTS 7/8" DIAMETER, OPEN HOLES 15/16" DIAMETER, UNLESS OTHERWISE NOTED.
- CALCULATED WEIGHT OF STRUCTURAL STEEL 206150 LBS (M270 GR. 50) 51460 LBS (M270 GR. 36)
- THE ZINC-SILICATE AND VINYL PAINT SYSTEM SHALL BE USED FOR SHOP AND FIELD PAINTING OF STRUCTURAL STEEL EXCEPT WHERE OTHERWISE NOTED. THE COLOR OF THE VINYL FINISH COAT SHALL BE MUNSSELL NO. 10Y 7/1, LIGHT GREY.
- FIELD WELDING OF CONSTRUCTION ACCESSORIES WILL NOT BE PERMITTED TO THE BOTTOM FLANGE OF BEAMS NOR TO THE TOP FLANGE FOR A DISTANCE EQUAL TO ONE-FOURTH THE SPAN LENGTH EACH WAY FROM THE PIER SUPPORTS. FIELD WELDING IN OTHER AREAS WILL BE PERMITTED ONLY WHEN APPROVED BY THE ENGINEER.
- ANCHOR BOLTS SHALL BE SET BEFORE BOLTING DIAPHRAGMS OVER SUPPORTS.
- THE MAIN LOAD CARRYING MEMBER COMPONENTS SUBJECT TO TENSILE STRESS SHALL CONFORM TO THE SUPPLEMENTAL REQUIREMENTS FOR NOTCH TOUGHNESS ZONE 2. THESE COMPONENTS ARE THE WIDE FLANGE BEAMS AND ALL SPLICE PLATE MATERIAL EXCEPT FILL PLATES.
- REINFORCEMENT BARS SHALL CONFORM TO THE REQUIREMENTS OF AASHTO M-31, M-42 OR M-53 GRADE 60.
- SLOPE WALL SHALL BE REINFORCED WITH WELDED WIRE FABRIC, 6"x 6" - W4.0 x W4.0, WEIGHING 58 LBS. PER 100 SQ. FT.
- BEARING SEAT SURFACES SHALL BE CONSTRUCTED OR ADJUSTED TO THE DESIGNATED ELEVATIONS WITHIN A TOLERANCE OF 1/8 INCH. ADJUSTMENT SHALL BE MADE EITHER BY GRINDING THE SURFACE OR BY SHIMMING THE BEARING. TWO 1/8" ADJUSTING SHIMS, OF THE DIMENSIONS OF THE BOTTOM BEARING PLATE, SHALL BE PROVIDED FOR EACH BEARING IN ADDITION TO ALL OTHER PLATES OR SHIMS. FOR TYPE I ELASTOMERIC BEARINGS, SHIMS OF THE DIMENSIONS OF TOP PLATE SHALL BE PROVIDED AND PLACED AS DETAILED.
- THE CONTRACTOR SHALL DRIVE ONE CONCRETE TEST PILE AT THE WEST ABUTMENT, EAST ABUTMENT, PIER 1 AND AT PIER 3, IN A PERMANENT LOCATION AS DIRECTED BY THE ENGINEER, BEFORE ORDERING THE REMAINDER OF PILES.
- BRIDGE SEAT SEALER SHALL BE APPLIED TO THE TOP SURFACE OF BOTH ABUTMENT CAPS.



PLAN

* = 6'-0" MIN. SHOULDER

TEMPORARY SHEET PILING BY CONTRACTOR INSTALL TO PROTECT THE EXISTING ABUTMENT OF S.N. 072-0038 DURING EXCAVATION FOR PROPOSED S.N. 072-0168 LEAVE IN PLACE UNTIL S.N. 072-0038 IS DEMOLISHED FOR BRIDGE REPLACEMENT. SEE ENLARGED PLAN (LIMITS OF TEMPORARY SHEET PILING) SHT 2 OF 23.

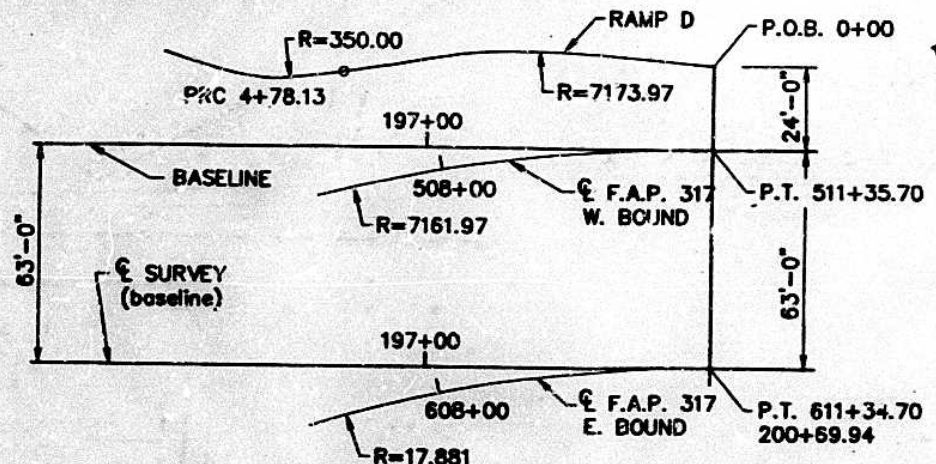
APPROVED FOR ENGINEERING ONLY

Ralph E. Anderson
 Engineer of Bridge and Structures



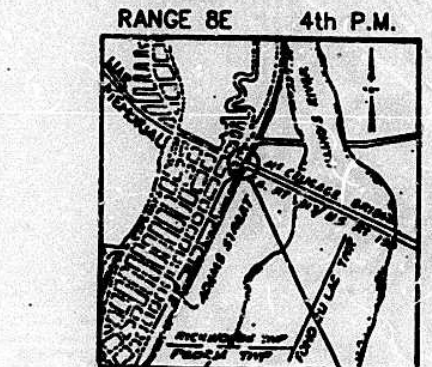
ILLINOIS STRUCTURAL #3100 EXPIRES 11-30-94

FOR SLIPFORM PARAPET OPTION SEE SHEET 126 OF THE ROWY PLANS & CHECK SHEET #37 (RECURRING SPECIAL PROVISIONS)



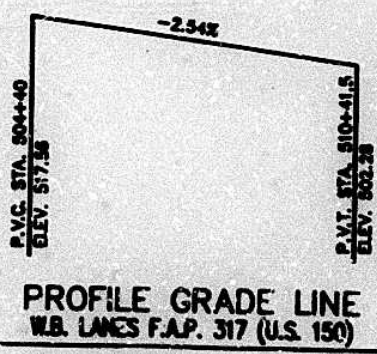
ALIGNMENT SKETCH

SEE ROADWAY ALIGNMENT PLAN - SHEET 28 OF ROWY. PLANS.

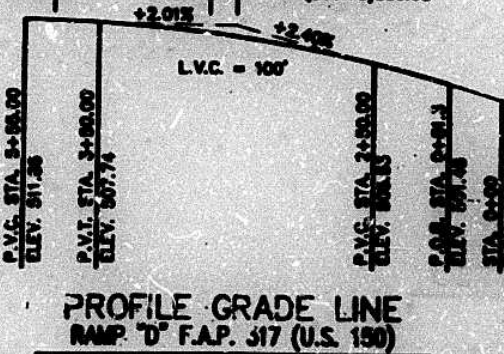


LOCATION SKETCH

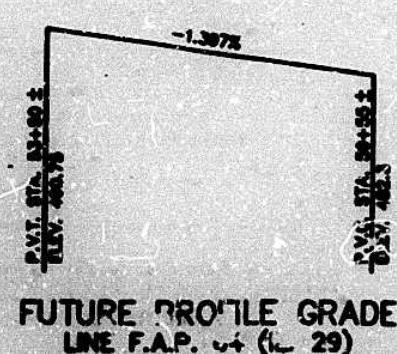
HORIZ. CURVE DATA WEST BOUND P.G.L.	HORIZ. CURVE DATA RAMP "D" P.G.L.	HORIZ. CURVE DATA FUTURE FAP 64
P.I. STA. 508+51.92	P.I. STA. 2+39.15	P.I. STA. 56+45.90
$\Delta = 4^\circ 32' 34.05"$	$\Delta = 3^\circ 49' 7.14"$	$\Delta = 9^\circ 30' 0.00"$
$D = 0^\circ 48' 0.00"$	$D = 0^\circ 47' 55.18"$	$D = 3^\circ 15' 58.23"$
$R = 7161.97'$	$R = 7173.97'$	$R = 1754.216'$
$L = 567.849'$	$L = 478.131'$	$L = 240.86'$
$E = 5.632'$	$E = 3.985'$	$E = 8.046'$
$T = 284.073'$	$T = 239.154'$	$T = 145.764'$



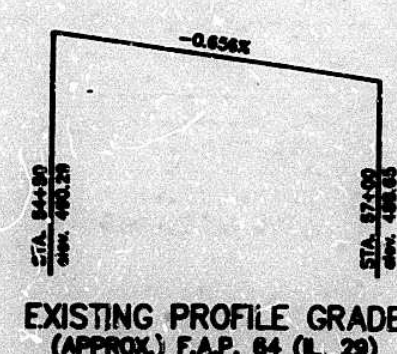
PROFILE GRADE LINE W.B. LANES F.A.P. 317 (U.S. 150)



PROFILE GRADE LINE RAMP "D" F.A.P. 317 (U.S. 150)



FUTURE PROFILE GRADE LINE F.A.P. 64 (I.L. 29)

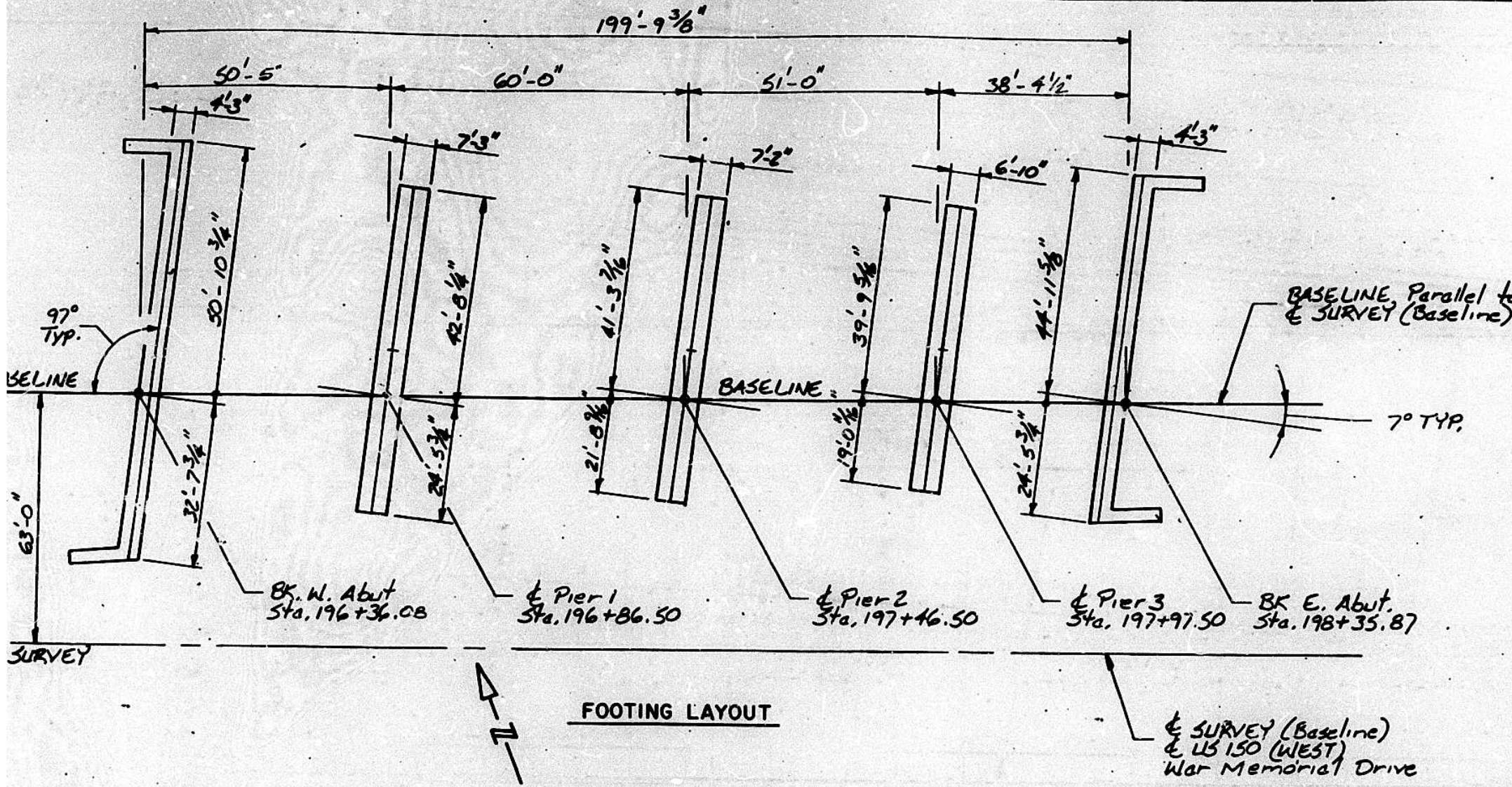


EXISTING PROFILE GRADE (APPROX.) F.A.P. 64 (I.L. 29)

GENERAL PLAN & ELEVATION U S 150 OVER ILL 29 (WESTBOUND) F A ROUTE 317 SECTION 14HB-1 PEORIA COUNTY STATION 197+46.50 STRUCTURE NUMBER 072-0168

FAP RTE.	SECTION	COUNTY	TOTAL SHEETS	SHEET NO.
317	14HB-1	PEORIA	180	180
STA.	TO STA.			
F.A.W.A. REG.	ILLINOIS			

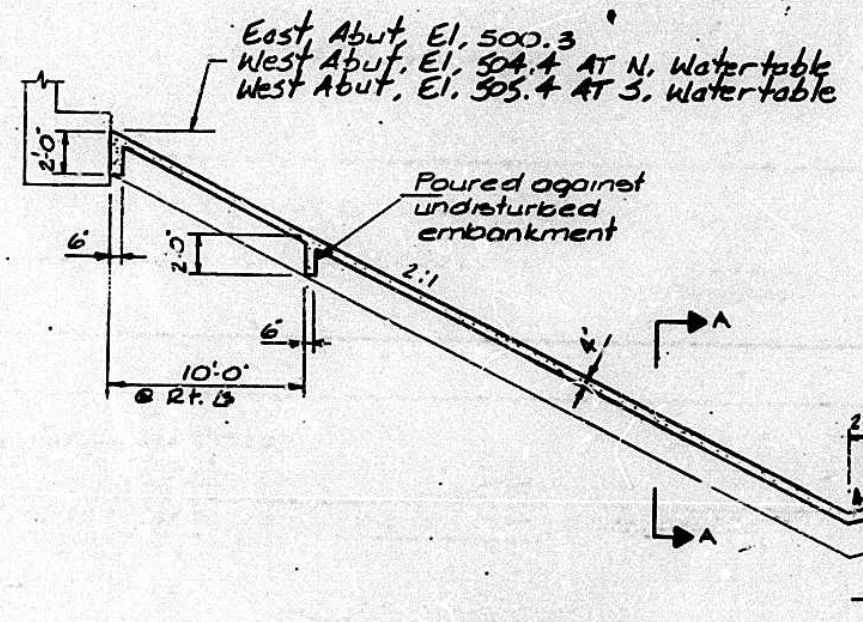
FOR INFORMATION ONLY
 *As built with Contract No. 88154
 in 1994 and 1995*



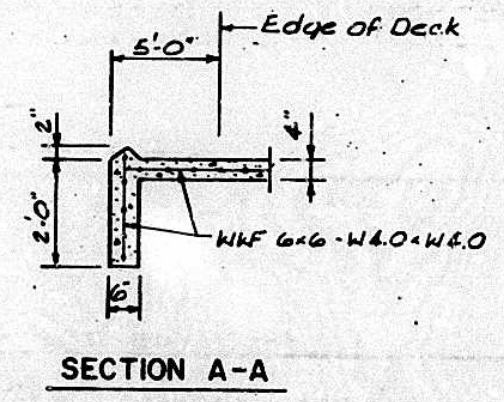
TOTAL BILL OF MATERIAL

ITEM	UNIT	SUPER	SUB	TOTAL
Structure Excavation	Cu. Yds.		1193	1193
Preformed Joint Seal, 4"	Lin. Ft.	153		153
Class X Concrete, Superstructure	Cu. Yds.	412.1		412.1
Protective Coat	Sq. Yds.	1785		1785
Elastomeric Bearing Assembly, Type I	Each	30		30
Elastomeric Bearing Assembly, Type II	Each	10		10
Class X Concrete	Cu. Yds.		506.6	506.6
Furnishing & Erecting Structural Steel	L. Sum	1		1
Stud Shear Connectors	Each	7401		7401
Reinforcement Bars	Lbs.		3460	3460
Reinforcement Bars, Epoxy Coated	Lbs.	119330	54840	174170
Furnishing Concrete Piles	Lin. Ft.		3812	3812
Driving Concrete Piles	Lin. Ft.		3812	3812
Test Piles, Concrete	Each		4	4
Name Plates	Each		1	1
Slope Wall, 4"	Sq. Yds.		595	595
Bridge Deck Grooving	Sq. Yds.	1545		1545
Bridge Seat Sealer	Sq. Ft.		416	416
Temporary Sheet Piling	Sq. Ft.		3570	3570
Drainage Scuppers	Each		1	1

* See Special Provisions



SLOPE WALL DETAIL
 West Slope Wall 333 SQ Yds
 East Slope Wall 239 SQ Yds



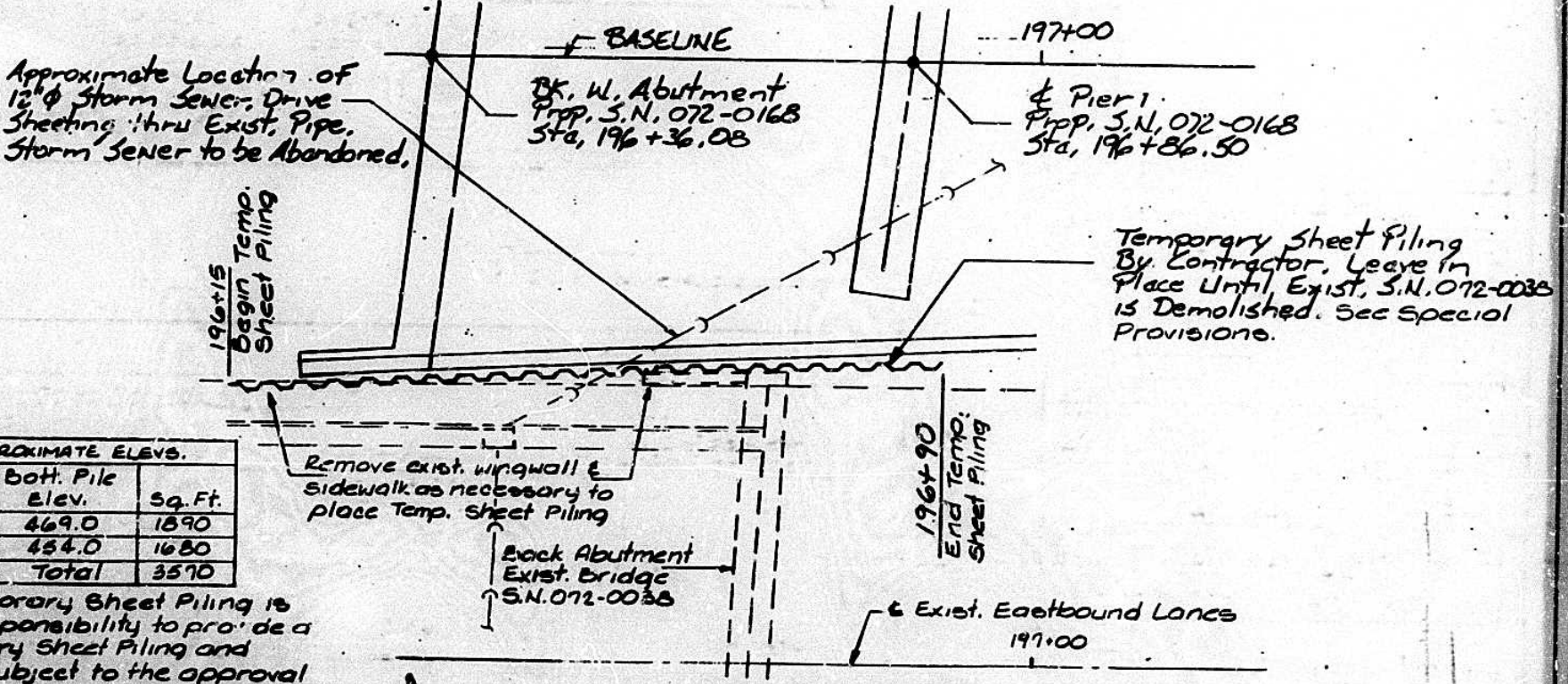
TEMPORARY SHEET PILING - APPROXIMATE ELEV.

Sta. to Sta.	Top Pile Elev.	Bot. Pile Elev.	Sq. Ft.
196+15 to 196+60	511.0	469.0	1890
196+60 to 196+90	510.0	454.0	1680
Total			3570

The information shown for the Temporary Sheet Piling is estimated. It is the contractor's responsibility to provide a design & computations of the Temporary Sheet Piling and associated members, if required, subject to the approval of the engineer.

STATION 197+46.50
 BUILT 199 BY
 STATE OF ILLINOIS
 F.A. ST. 317 SEC. 14B-1
 F.A. PROJ.
 LOADING HS-20
 STR. NO. 072-0168

LETTERING FOR NAME PLATE
 See Standard 2113



LIMITS TEMPORARY SHEET PILING PLAN
 Note: During construction of S.N. 072-0168 two way traffic exists South of the Eastbound Centerline only.

BILL OF MATERIALS & DETAILS
 U.S 150 OVER ILL. 29 (WESTBOUND)
 F.A. ROUTE 317 SECTION 14HB-1
 PEORIA COUNTY
 STATION 197+46.50
 STRUCTURE NUMBER 072-0168

MIN. BAR LAPS

#5 1'-0"
#6 2'-0"

Junction Box
8" x 8" x 6" (Cast
Incidental to "Class X
Concrete Superstructure")
See Sht. 8 of 23.

NOTE:
For Lighting
Conduit Continuing
off the Structure,
See Lighting Plans

Drainage Gutter. See Sheets
22 & 23 of 23. Cut longitudinal
reinforcement as required

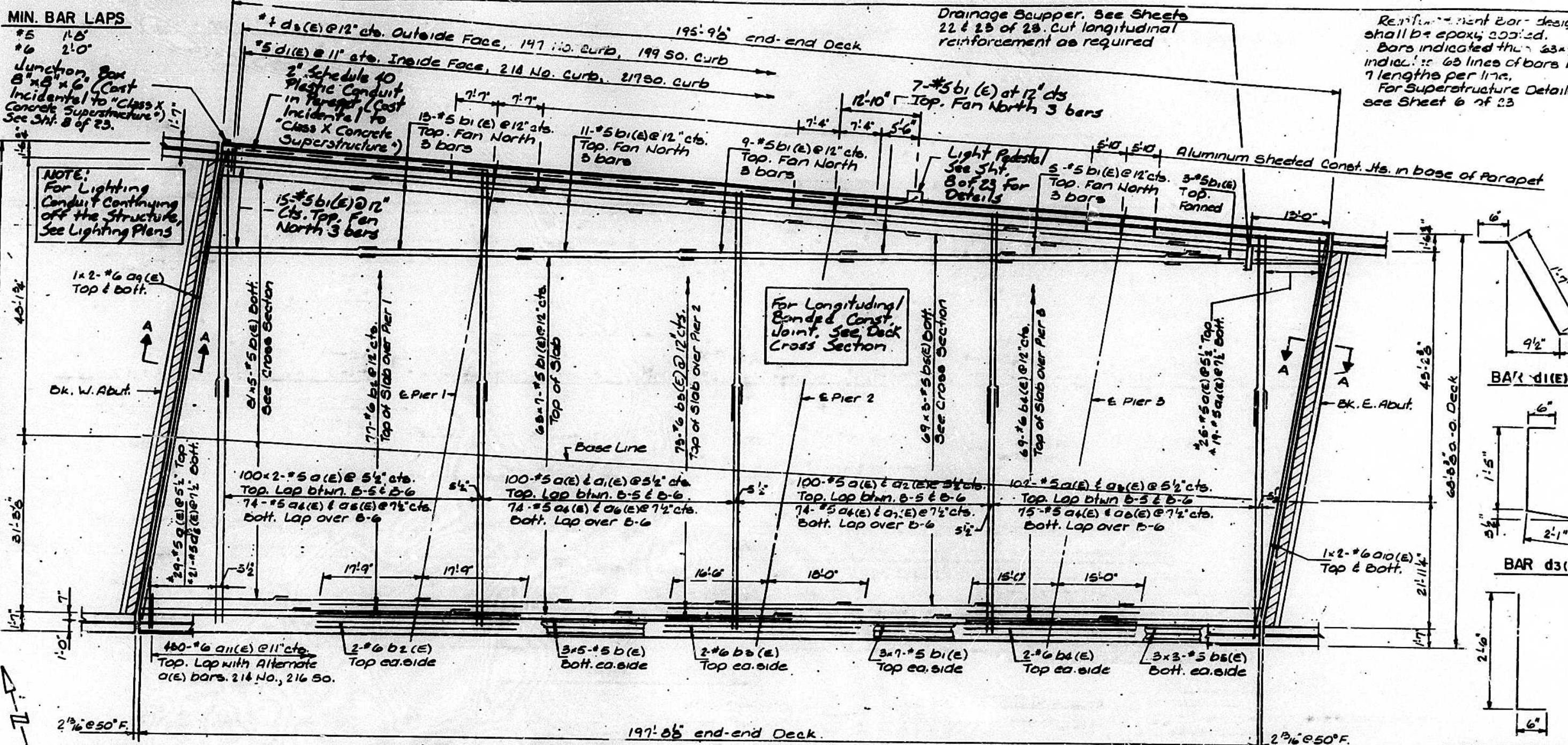
Reinforcement Bar designated (E)
shall be epoxy coated.
Bars indicated thus 33x7-7 etc.
indicate 33 lines of bars with
7 lengths per line.
For Superstructure Details
see Sheet 6 of 23

FAP RITE	SECTION	COUNTY	TOTAL SHEETS	SHEET NO.
317	14HR-1	PEORIA		133

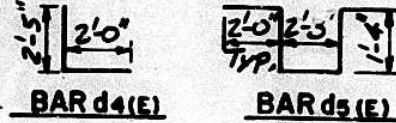
Sheet 5 of 23

SUPERSTRUCTURE BILL OF MATERIAL

BAR	NO.	SIZE	LENGTH	SHAPE
a(E)	556	#5	47'3"	
a1(E)	100	#5	38'0"	
a2(E)	100	#5	34'9"	
a3(E)	102	#5	31'6"	
a4(E)	316	#5	37'0"	
a5(E)	95	#5	45'6"	
a6(E)	74	#5	42'3"	
a7(E)	74	#5	39'0"	
a8(E)	75	#5	35'9"	
a9(E)	4	#6	42'3"	
a10(E)	4	#6	35'1"	
a11(E)	420	#6	4'0"	
a12(E)	8	#5	2'0"	
b(E)	435	#5	26'10"	
b1(E)	546	#5	29'8"	
b2(E)	81	#6	35'6"	
b3(E)	77	#6	34'6"	
b4(E)	73	#6	30'0"	
b5(E)	225	#5	23'0"	
d(E)	431	#5	3'0"	
d1(E)	421	#5	7'7"	
d2(E)	396	#4	3'0"	
d3(E)	396	#4	4'0"	
d4(E)	3	#6	4'5"	
d5(E)	5	#6	8'11"	
e(E)	18	#4	13'4"	
e1(E)	24	#4	7'4"	
e2(E)	18	#4	14'8"	
e3(E)	24	#4	7'1"	
e4(E)	12	#4	18'7"	
e5(E)	24	#4	5'7"	
e6(E)	12	#4	15'1"	
e7(E)	18	#4	13'6"	
e8(E)	18	#4	14'11"	
e9(E)	12	#4	18'10"	
e10(E)	12	#4	15'3"	
e11(E)	4	#8	23'6"	
e12(E)	8	#8	7'4"	
e13(E)	4	#6	25'6"	
e14(E)	8	#8	7'1"	
e15(E)	4	#8	21'11"	
e16(E)	8	#8	5'7"	
e17(E)	2	#8	30'5"	
e18(E)	4	#8	23'9"	
e19(E)	4	#8	25'10"	
e20(E)	4	#8	22'2"	
e21(E)	2	#8	20'9"	
e22(E)	4	#8	21'5"	
e23(E)	8	#5	7'4"	
e24(E)	4	#5	23'5"	
e25(E)	8	#6	7'1"	
e26(E)	4	#5	19'10"	
e27(E)	8	#5	5'7"	
e28(E)	2	#5	30'5"	
e29(E)	4	#5	21'8"	
e30(E)	4	#5	23'9"	
e31(E)	4	#5	20'1"	
e32(E)	2	#5	30'9"	
Class X Concrete Superstructure				Cu. Yds. 42.1
Reinforcement Bars Epoxy Coated				Lbs. 119330

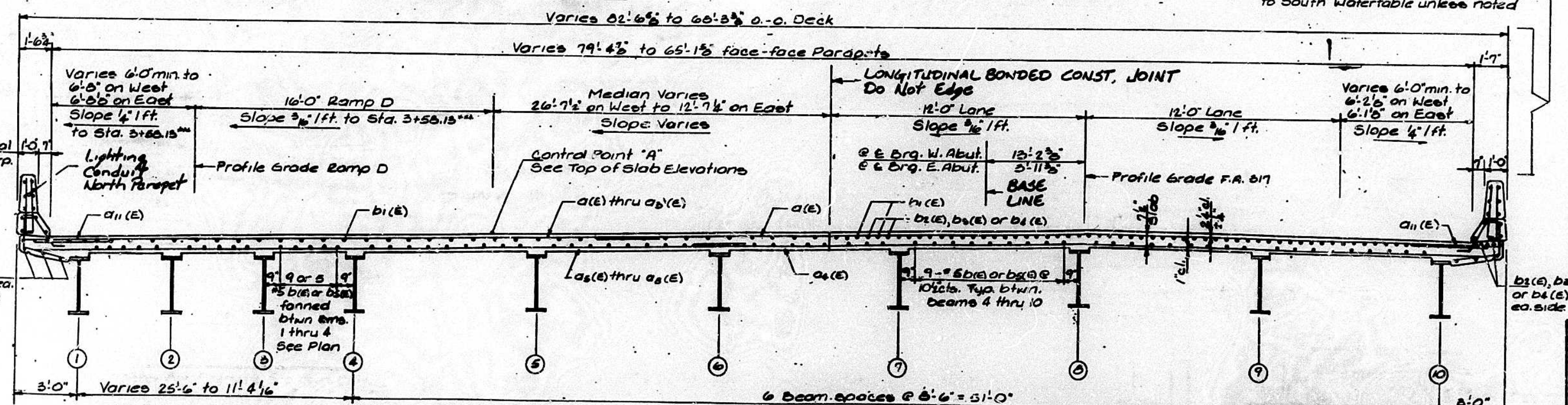


* Order a1(e), a2(e) & a3(e) bars full length. Cut in field to fit skew & use remainder of bar in opposite side of deck



PLAN

Dimensions given are perpendicular to South Waterable unless noted



*** From Sta. 3+58.13 to Sta. 4+29.16 varies with Superstructure

NEAR MIDSPAN

CROSS SECTION (Looking East)

NEAR PIERS

FOR INFORMATION ONLY

As built with Contract No. 88154 in 1994 and 1995

SUPERSTRUCTURE
 U.S 150 OVER ILL 29 (WESTBOUND)
 F.A. ROUTE 317 SECTION 14HR-1
 PEORIA COUNTY
 STATION 197+46.50
 STRUCTURE NUMBER 072-0168

FOR INFORMATION ONLY

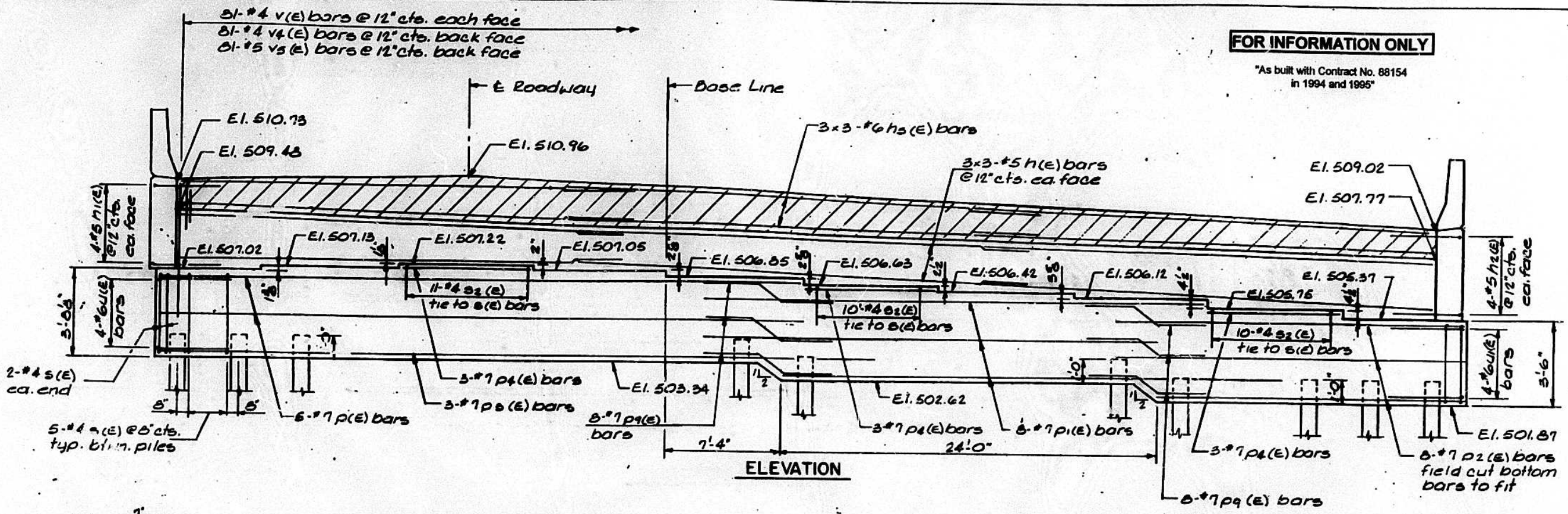
*As built with Contract No. 88154
in 1994 and 1995*

MIN. BAR LAPS

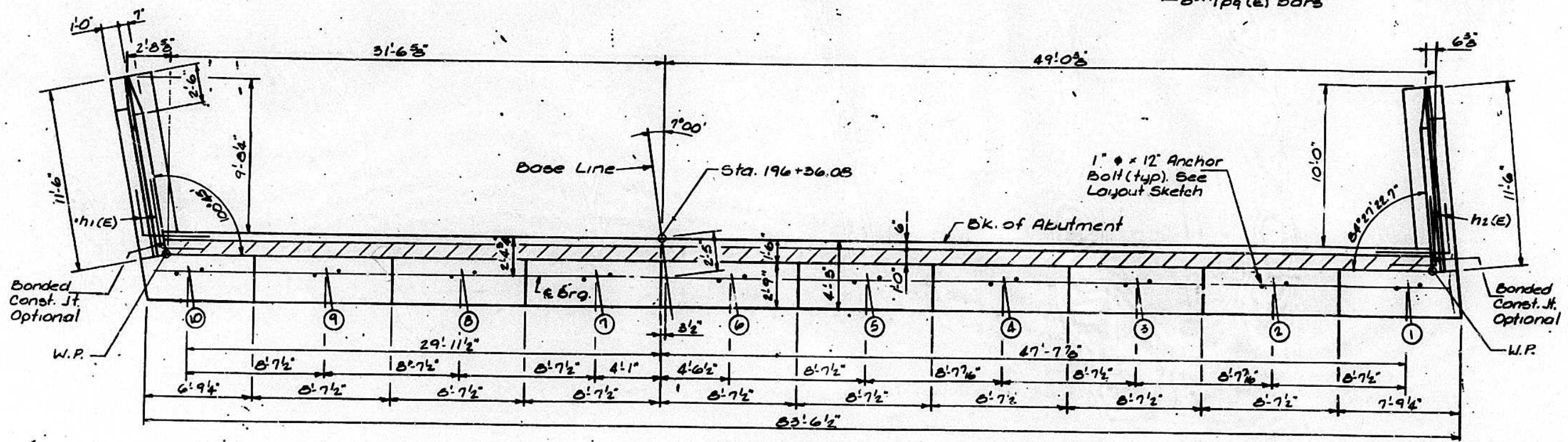
#5	3'-0"
#6	3'-7"
#7	4'-10"

FAP. NO.	SECTION	COUNTY	TOTAL SHEETS	SHEET NO.
317	14HB-1	PEORIA		19
STA.	TO STA.			
F.H.W.A. REG.	ILLINOIS			

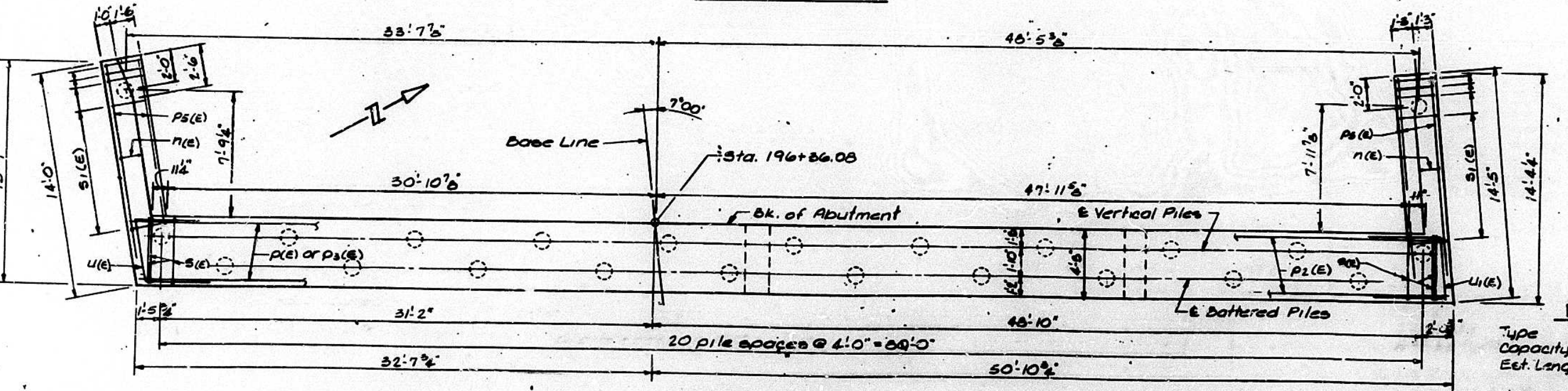
Sheet 12 of 23



ELEVATION



ABUTMENT PLAN

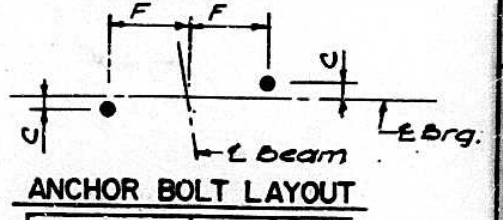


PLAN-PILE CAP

WEST ABUTMENT-BILL OF MATERIAL

BAR	NO.	SIZE	LENGTH	SHAPE
h(E)	18	#5	28'-10"	
h1(E)	8	#5	7'-6"	
h2(E)	8	#5	7'-6"	
h2(E)	20	#4	11'-3"	
h2(E)	12	#4	11'-3"	
h3(E)	9	#6	29'-"	
n(E)	18	#6	10'-10"	
n1(E)	12	#6	5'-5"	
p(E)	5	#7	40'-10"	
p1(E)	8	#7	30'-9"	
p2(E)	8	#7	21'-0"	
p3(E)	3	#7	45'-10"	
p4(E)	9	#7	8'-5"	
p5(E)	12	#7	12'-6"	
p9(E)	16	#7	11'-4"	
s(E)	104	#4	14'-11"	
s1(E)	24	#4	9'-5"	
s2(E)	31	#4	6'-11"	
u(E)	4	#6	12'-11"	
u1(E)	4	#6	12'-10"	
v(E)	162	#4	5'-0"	
v1(E)	18	#6	6'-6"	
v2(E)	24	#6	6'-4"	
v3(E)	6	#6	6'-4"	
v4(E)	81	#4	4'-0"	
v5(E)	81	#5	3'-0"	
Structure Excavation	Cu. Yds.	295		
Class X Concrete	Cu. Yds.	71.6		
Reinforcement Bars, Epoxy Coated	Lbs.	7020		
Concrete Piles	Lin. Ft.	1056		
Test Piles, Concrete	Each	1		

Notes: Space reinforcement in cap to miss anchor bolts.
Pour steps monolithically with cap.
Reinforcement bars designated (E) shall be epoxy coated.
See Sheet 14 of 23 for Abutment Details.



ANCHOR BOLT LAYOUT

Beam	C	F
Beam 1	7'-6"	9'-4"
Beam 2	1'-6"	9'-6"
Beam 3	1'-6"	9'-6"
Beams 4 thru 10	1'-4"	9'-6"

PILE DATA

Type	Concrete
Capacity	45 tons
Est. Length	39' No. End 57' 30" End
No. Rec'd.	22 plus one test pile
	at South End

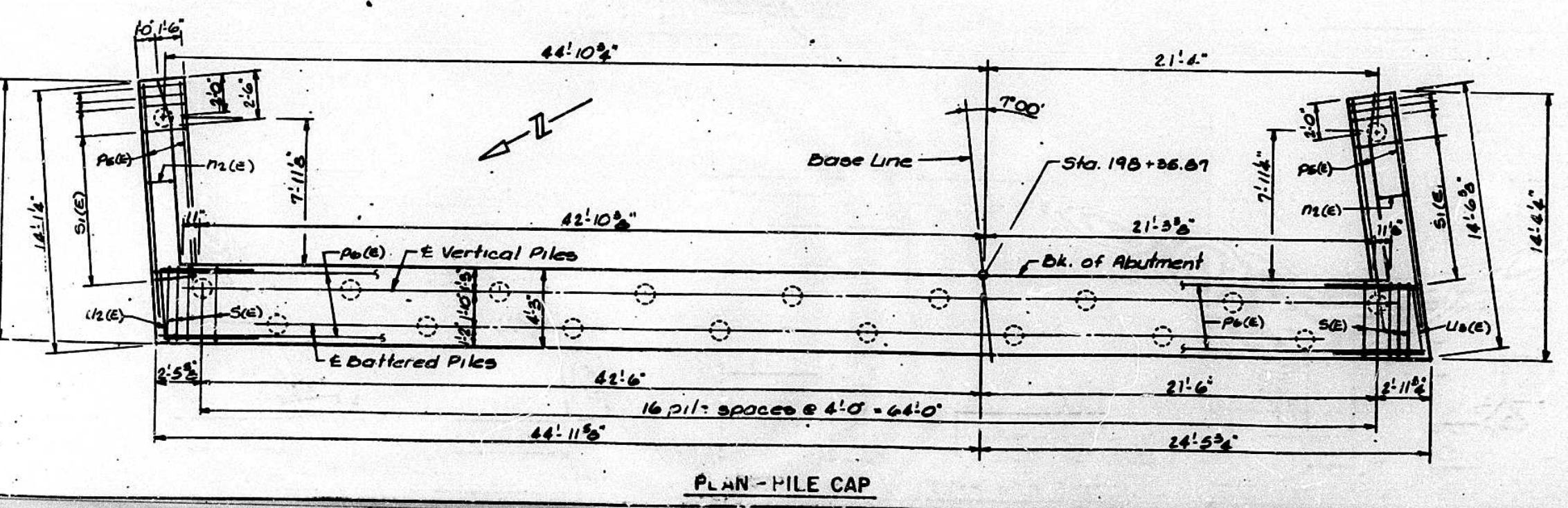
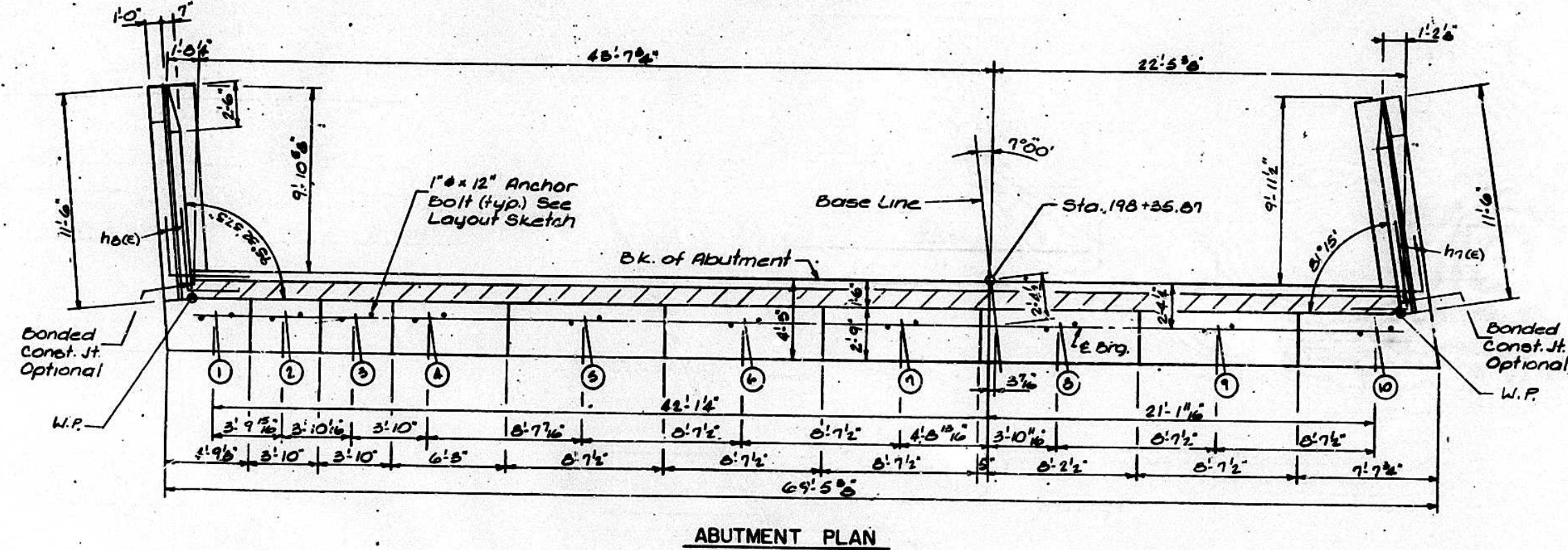
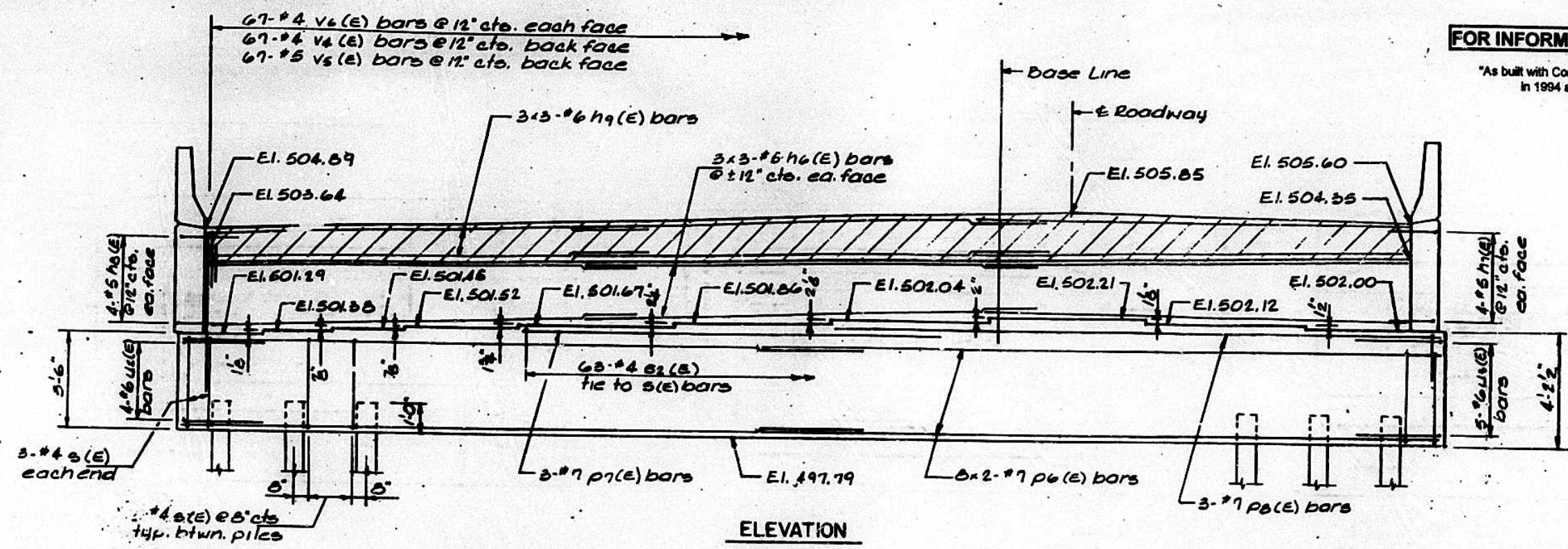
WEST ABUTMENT
U.S. 150 OVER ILL. 29 (WESTBOUND)
F.A. ROUTE 317 SECTION 14HB-1
PEORIA COUNTY
STATION 197+46.50
STRUCTURE NUMBER 072-0168

F.P. RTE.	SECTION	COUNTY	TOTAL SHEETS	SHEET NO.
317	14HB-1	PEORIA		19
STA.	TO STA.			
F.R.W.A. REG.	ILLINOIS			

FOR INFORMATION ONLY
 "As built with Contract No. 88154
 in 1994 and 1995"

MIN. BAR LAPS

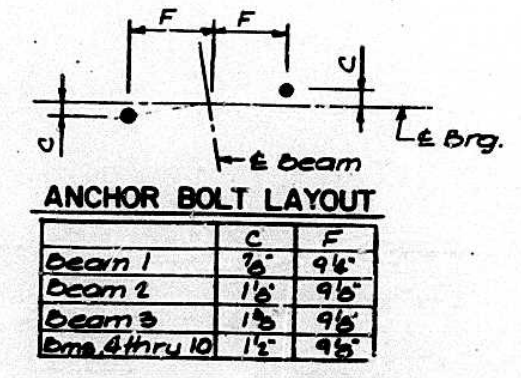
#5	3'-0"
#6	3'-7"
#7	4'-10"



EAST ABUTMENT - BILL OF MATERIAL

BAR NO.	SIZE	LENGTH	SHAPE
h3(E)	20 #4	11'-3"	U
h4(E)	12 #4	11'-3"	U
h5(E)	18 #5	24'-0"	U
h6(E)	5 #5	7'-6"	L
h7(E)	5 #5	7'-6"	L
h8(E)	9 #6	24'-5"	U
m2(E)	18 #6	11'-10"	U
m3(E)	12 #6	5'-11"	U
p6(E)	12 #7	12'-6"	U
p6(E)	16 #7	36'-10"	U
p7(E)	3 #7	31'-9"	U
p8(E)	3 #7	32'-6"	U
s(E)	26 #4	14'-11"	U
s1(E)	24 #4	9'-5"	U
s2(E)	63 #4	6'-11"	U
u1(E)	4 #6	15'-10"	U
u3(E)	5 #6	15'-11"	U
v4(E)	67 #4	4'-0"	U
v5(E)	67 #5	3'-0"	U
v6(E)	134 #4	5'-2"	U
v7(E)	18 #6	6'-5"	U
v8(E)	24 #6	6'-3"	U
v9(E)	6 #6	6'-3"	U
Structure Excavation	Cu. Yds.	297	
Class X Concrete	Cu. Yds.	650	
Reinforcement Bars, Epoxy Coated	Lbs.	6210	
Concrete Piles	Lin. Ft.	774	
Test Piles, Concrete	Each	1	

Notes: Space reinforcement in cap to miss anchor bolts.
 Pour steps monolithically with cap.
 Reinforcement bars designated (E) shall be epoxy coated.
 Bars indicated thus 2-#7 etc. indicates 2 lines of bars with 2 lengths per line.
 See Sheet 14 of 23 for Abutment Details.



PILE DATA

Type	Concrete
Capacity	44 tons
Est. Length	35' No. End 51' So. End
No. Required	16 plus 1 test pile
(Driv. Test Pile @ S. End)	

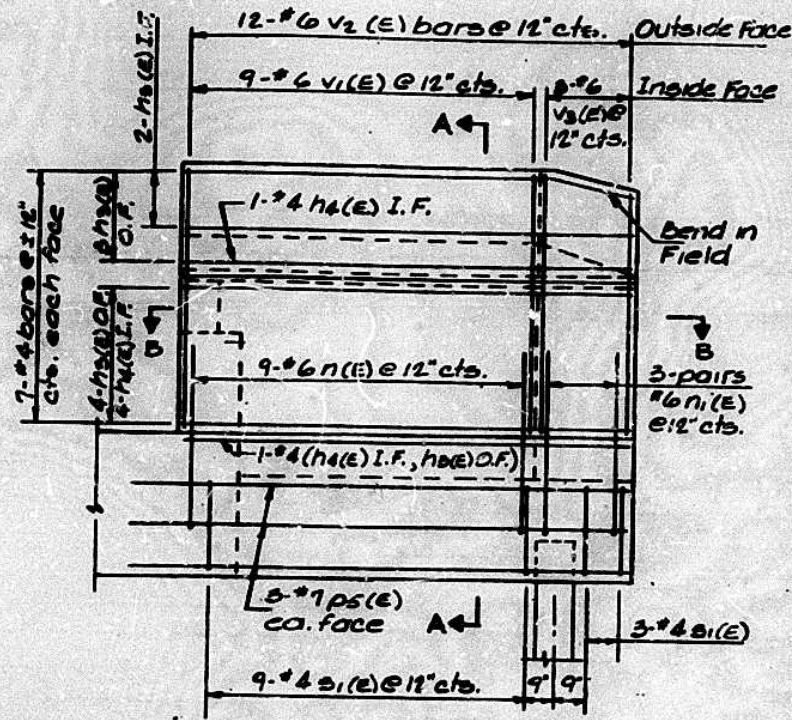
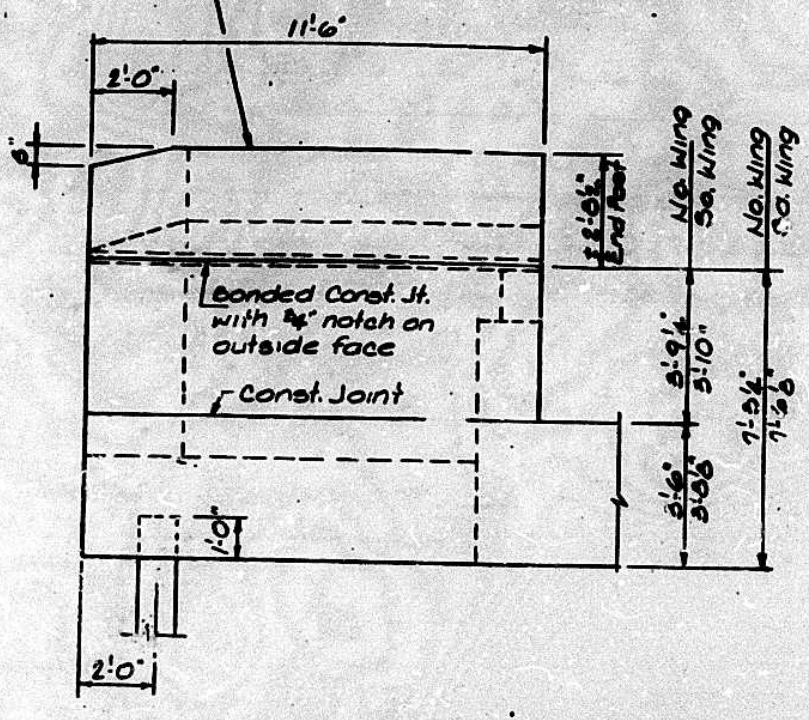
EAST ABUTMENT
 U.S 150 OVER ILL. (WESTBOUND)
 F.A. ROUTE 317 - SECTION 14HB-1
 PEORIA COUNTY
 STATION: 197+46.50
 STRUCTURE NUMBER 072-0168

FOR INFORMATION ONLY

As built with Contract No. 88154 in 1984 and 1995

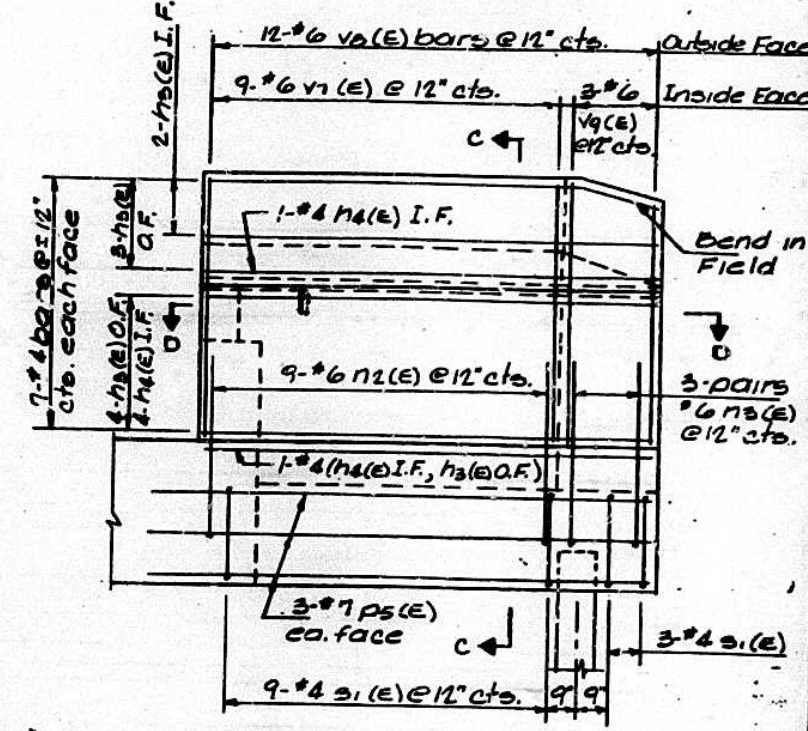
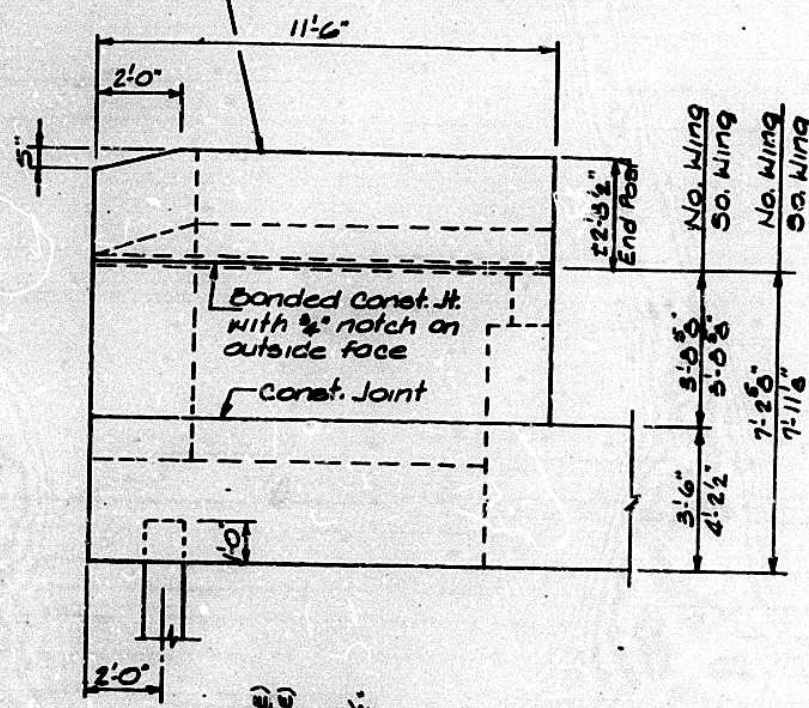
F.P. NO.	SECTION	COUNTY	TOTAL SHEETS	SHEET NO.
317	14HB-1	PEORIA	192	192
STA.		TO STA.		
F.A. REG.		ILLINOIS		

End Post shall be poured after bridge parapet is in place. Form top surface to match parapet grade.

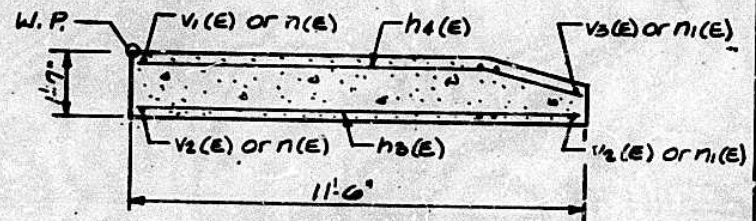
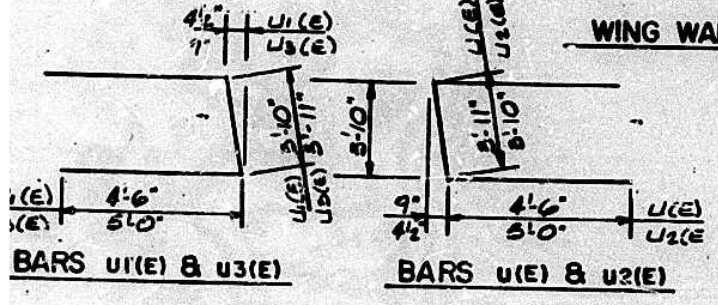


WING WALL ELEVATIONS - WEST ABUTMENT

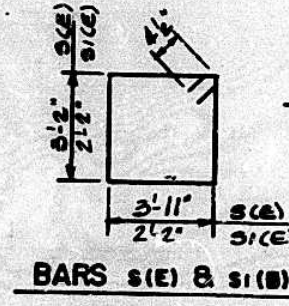
End Post shall be poured after bridge parapet is in place. Form top surface to match parapet grade.



WING WALL ELEVATIONS - EAST ABUTMENT

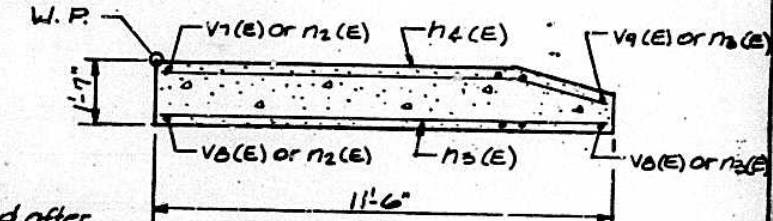


SECTION B-B

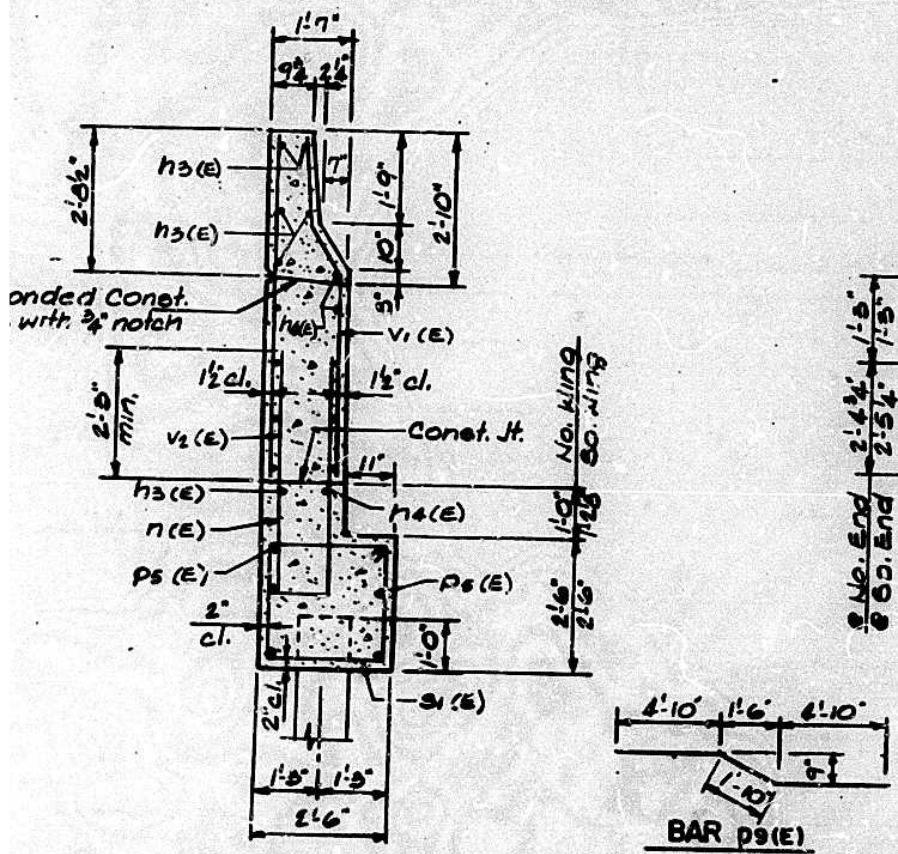


Note 1

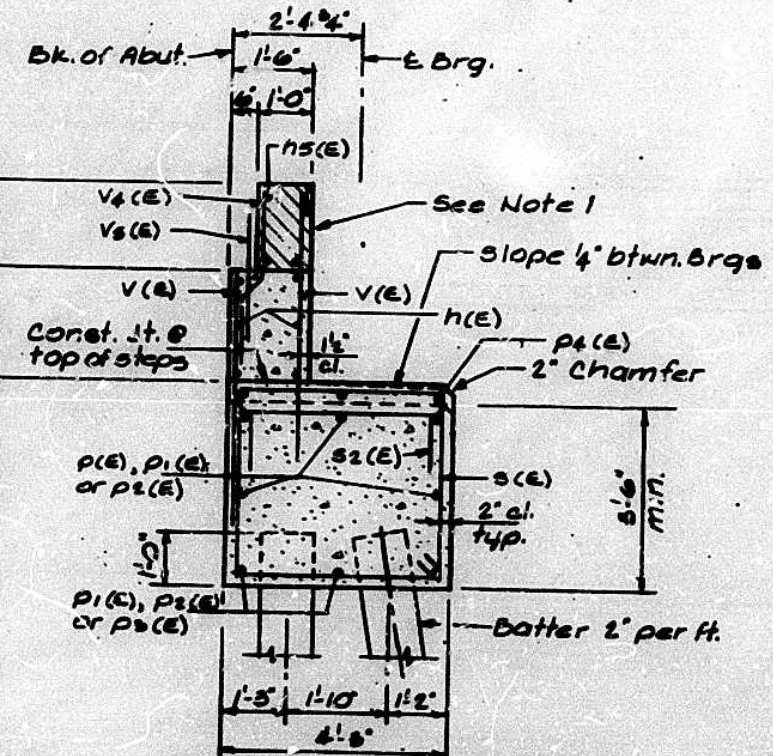
Hatched area to be poured after superstructure falsework has been removed. Quantity of concrete included with Class X Concrete Superstructure. For details of Expansion Device see Sheet 6 of 23.



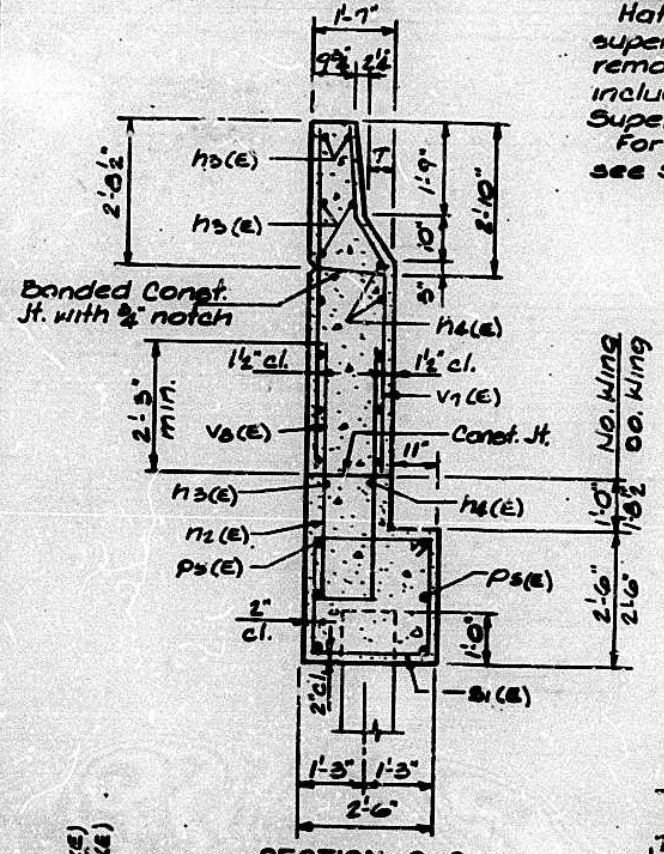
SECTION D-D



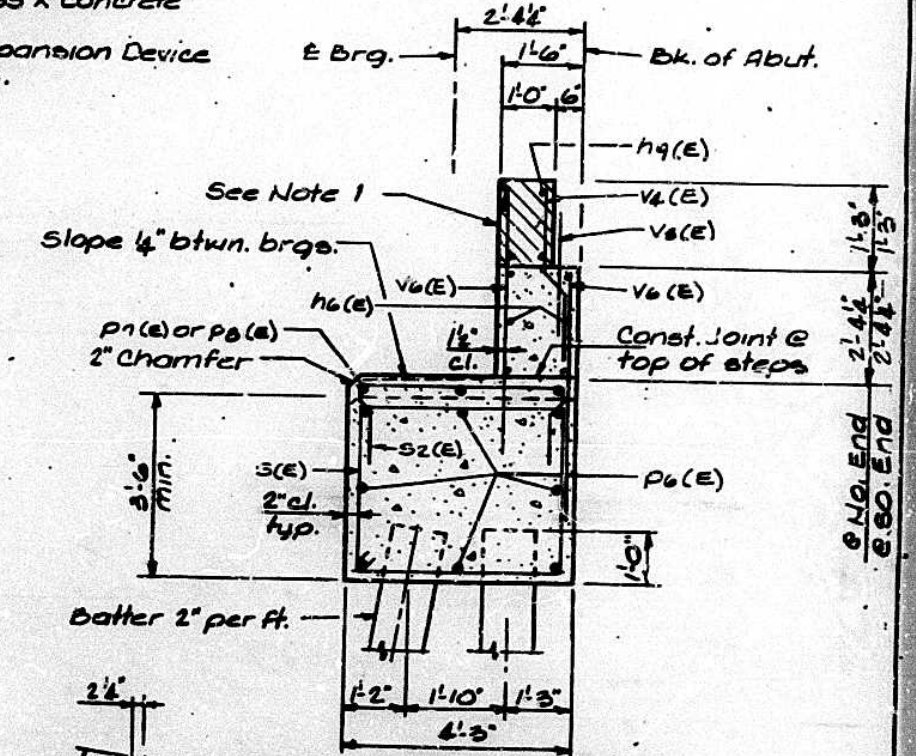
SECTION A-A



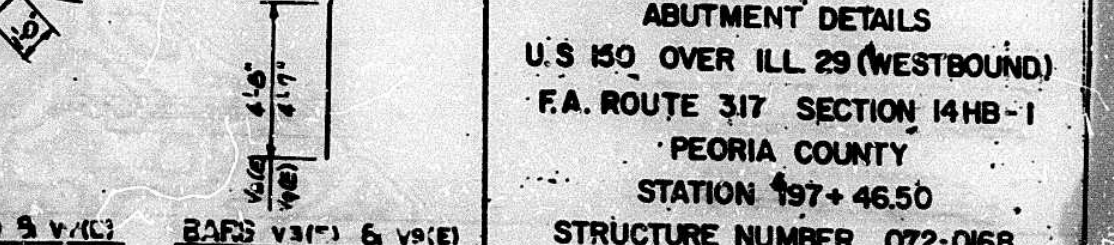
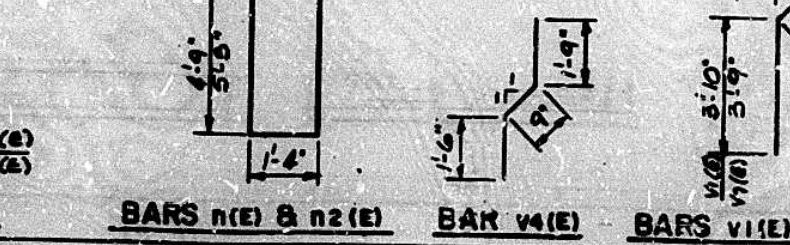
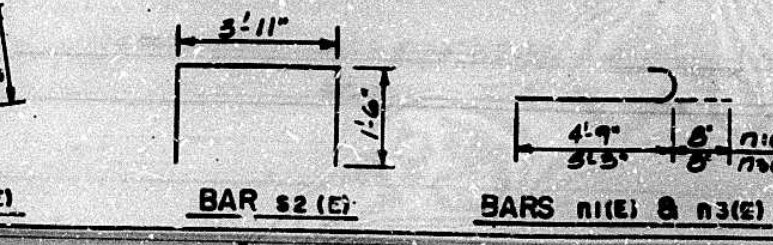
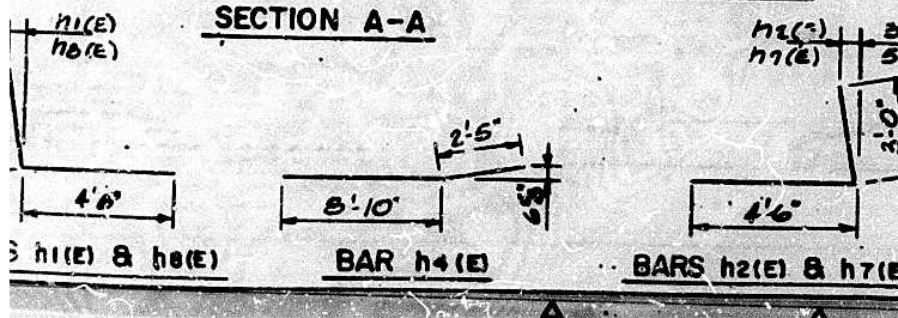
SECTION THRU WEST ABUTMENT



SECTION C-C



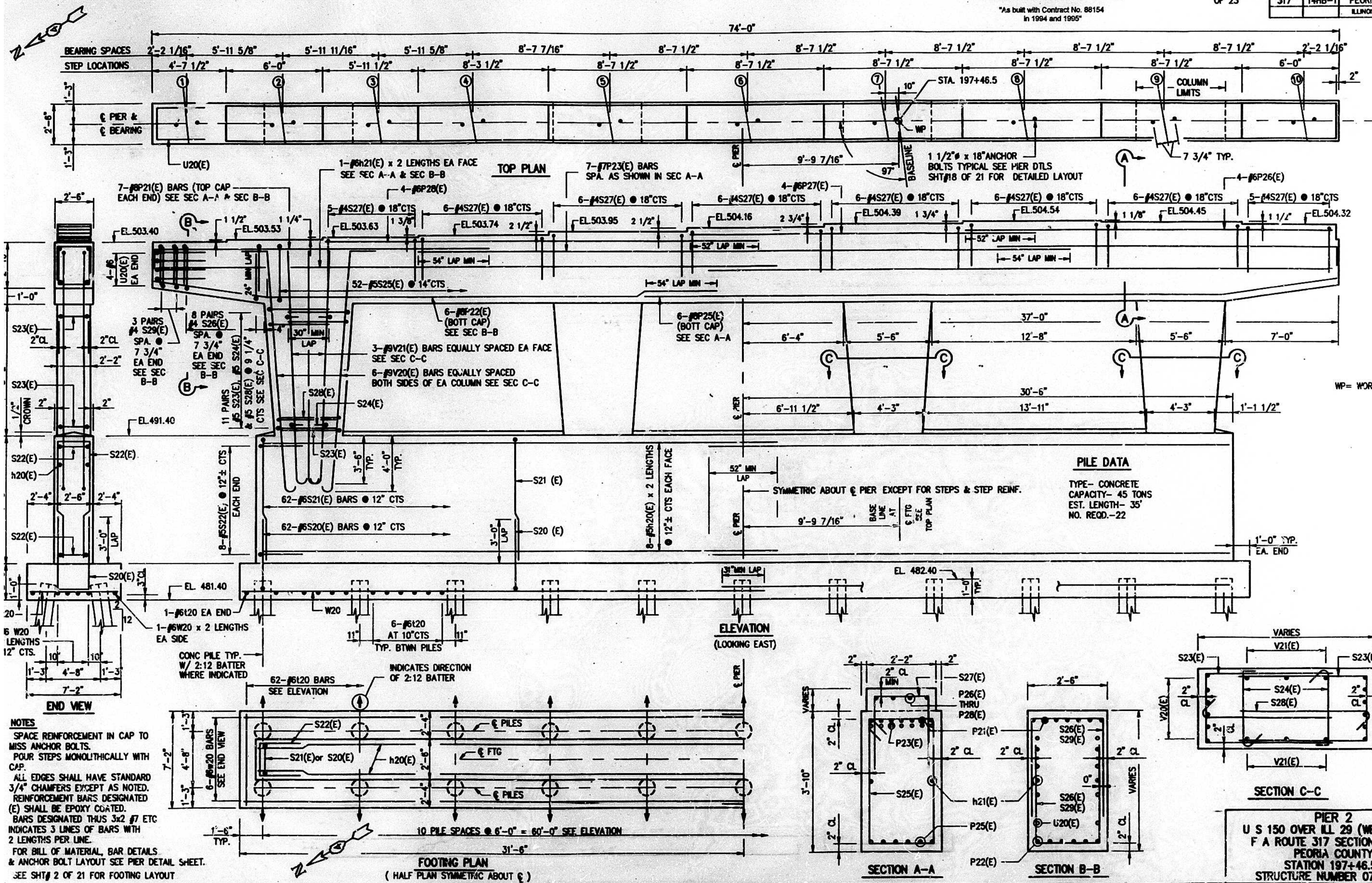
SECTION THRU EAST ABUTMENT



ABUTMENT DETAILS
 U.S. 150 OVER ILL. 29 (WESTBOUND)
 F.A. ROUTE 317 SECTION 14HB-1
 PEORIA COUNTY
 STATION 197+46.50
 STRUCTURE NUMBER 072-0168

ROUTE NO.	SECTION	COUNTY	TOTAL SHEETS	SHEET NO.
317	14HB-1	PEORIA		194
		ILLINOIS		FED. AID PROJECT

As built with Contract No. 88154 in 1994 and 1995

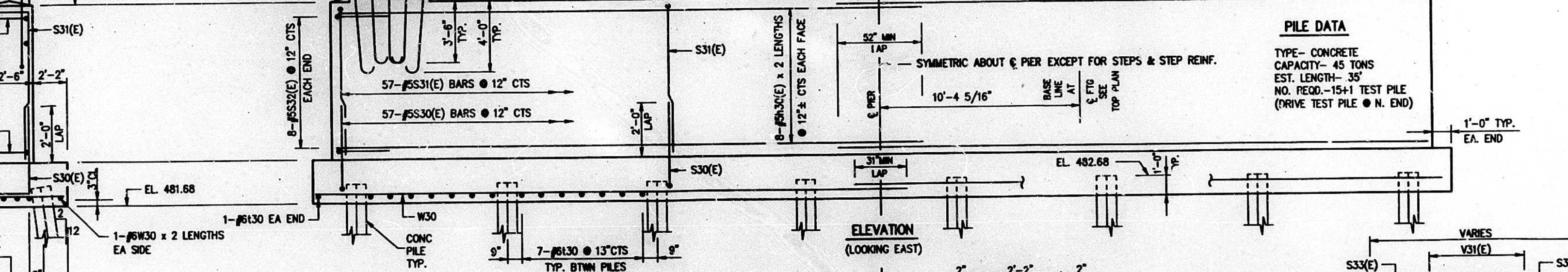
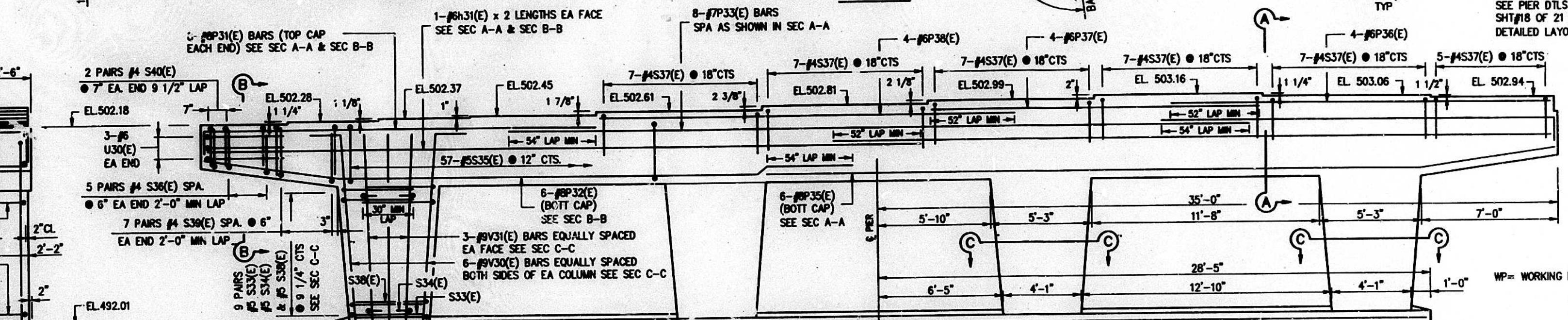
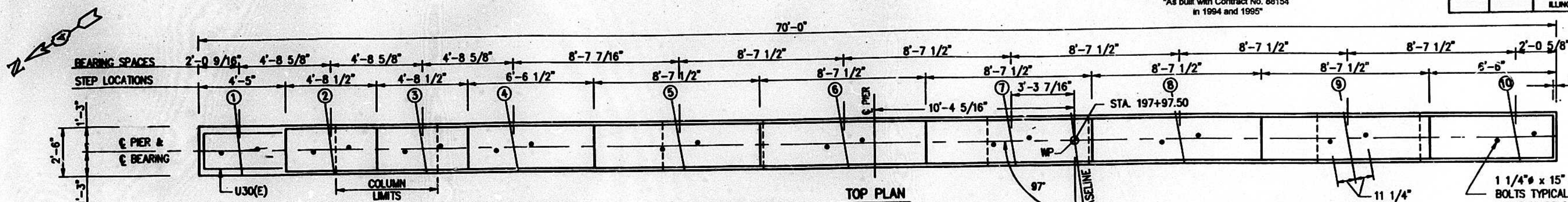


PILE DATA
 TYPE- CONCRETE
 CAPACITY- 45 TONS
 EST. LENGTH- 35'
 NO. REQD.-22

NOTES
 SPACE REINFORCEMENT IN CAP TO MISS ANCHOR BOLTS.
 POUR STEPS MONOLITHICALLY WITH CAP.
 ALL EDGES SHALL HAVE STANDARD 3/4" CHAMFERS EXCEPT AS NOTED.
 REINFORCEMENT BARS DESIGNATED (E) SHALL BE EPOXY COATED.
 BARS DESIGNATED THUS 3x2 #7 ETC INDICATES 3 LINES OF BARS WITH 2 LENGTHS PER LINE.
 FOR BILL OF MATERIAL, BAR DETAILS & ANCHOR BOLT LAYOUT SEE PIER DETAIL SHEET.
 SEE SHT # 2 OF 21 FOR FOOTING LAYOUT

PIER 2
 U S 150 OVER ILL 29 (WESTBOUND)
 F A ROUTE 317 SECTION 14HB-1
 PEORIA COUNTY
 STATION 197+46.50
 STRUCTURE NUMBER 072-0168

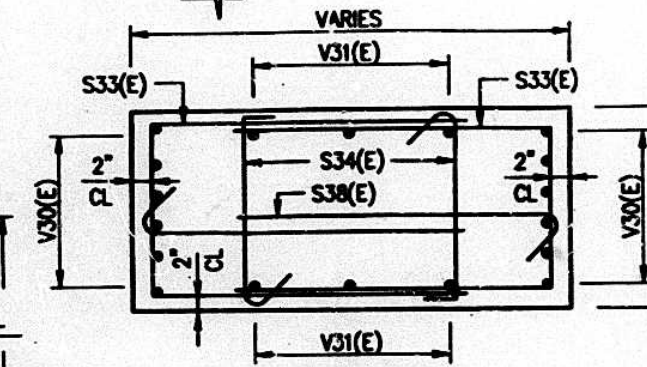
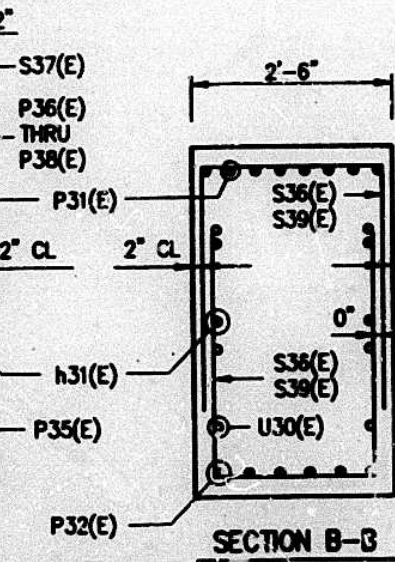
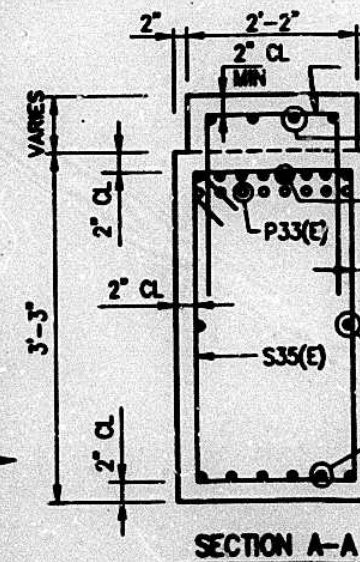
ROUTE NO.	SECTION	COUNTY	TOTAL SHEETS	SHEET NO.
317	14HB-1	PEORIA		195
		ILLINOIS		FED. AID PROJ. NO.



NOTES
 SPACE REINFORCEMENT IN CAP TO MISS ANCHOR BOLTS.
 POUR STEPS MONOLITHICALLY WITH CAP.
 ALL EDGES SHALL HAVE STANDARD 3/4" CHAMFERS EXCEPT AS NOTED.
 REINFORCEMENT BARS DESIGNATED (E) SHALL BE EPOXY COATED.
 BARS DESIGNATED THUS 3x2 #7 ETC INDICATES 3 LINES OF BARS WITH 2 LENGTHS PER LINE.
 FOR BILL OF MATERIAL, BAR DETAILS & ANCHOR BOLT LAYOUT SEE PIER DETAIL SHEET.
 SEE SHT# 2 OF 21 FOR FOOTING LAYOUT

PILE DATA

TYPE- CONCRETE
 CAPACITY- 45 TONS
 EST. LENGTH- 35'
 NO. REQD.-15+1 TEST PILE (DRIVE TEST PILE @ N. END)



PIER 3
 U S 150 OVER ILL 29 (WESTBOUND)
 F A ROUTE 317 SECTION 14HB-1
 PEORIA COUNTY
 STATION 197+46.50
 STRUCTURE NUMBER 072-0168