

STATE OF ILLINOIS DEPARTMENT OF TRANSPORTATION PROPOSED HIGHWAY PLANS

**F.A.P. 346: US ROUTE 41
FERNDALE STREET TO IL ROUTE 21
SECTION: 2019-008-I
ULTRA-THIN BONDED WEARING COURSE
PROJECT: NHPP-BKAN(730)
LAKE COUNTY
C-91-324-19**

F.A.P. RTE.	SECTION	COUNTY	TOTAL SHEETS	SHEET NO.
346	2019-008-I	LAKE	*22	1
		ILLINOIS	CONTRACT NO. 62H81	

*22 + 3 = 25 TOTAL SHEETS

D-91-123-19

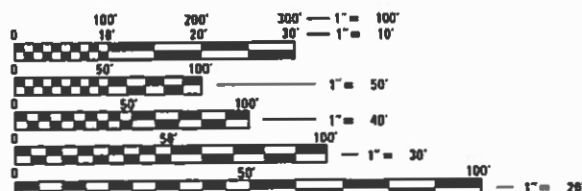


FOR INDEX OF SHEETS SEE SHEET NO.2

THE PROJECT IS LOCATED IN THE VILLAGE OF GURNEE AND LAKE COUNTY

TRAFFIC DATA:
2017 ADT = 25,000
POSTED SPEED LIMIT = 45 MPH

DESIGN DESIGNATION:
OTHER PRINCIPAL ARTERIAL



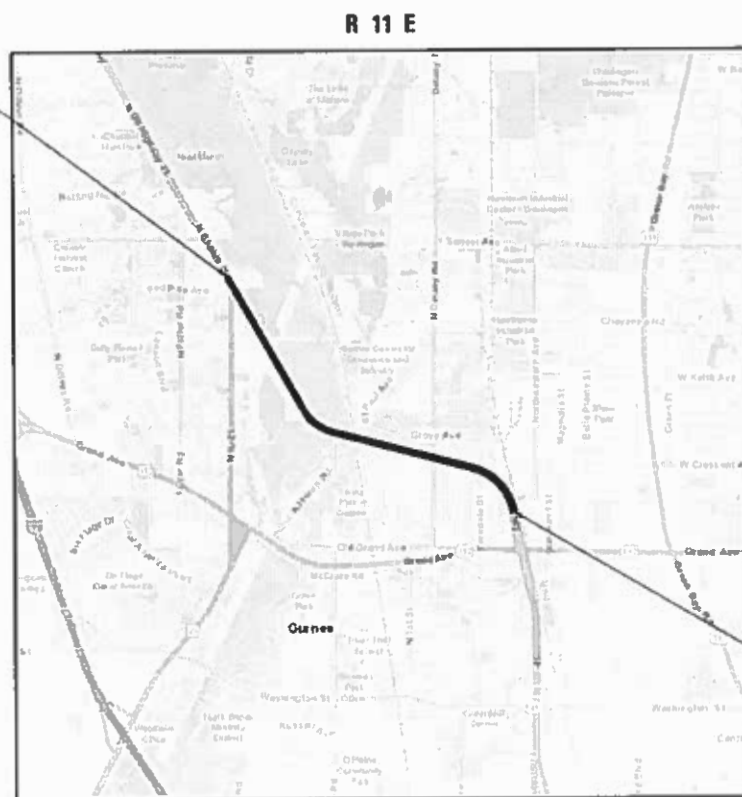
FULL SIZE PLANS HAVE BEEN PREPARED USING STANDARD ENGINEERING SCALES. REDUCED SIZED PLANS WILL NOT CONFORM TO STANDARD SCALES. IN MAKING MEASUREMENTS ON REDUCED PLANS, THE ABOVE SCALES MAY BE USED.

J.U.L.I.E.
JOINT UTILITY LOCATION INFORMATION FOR EXCAVATION
1-800-892-0123
OR 811

PROJECT ENGINEER: KARI SMITH (847) 705-4437
PROJECT MANAGER: FAWAD AQUEEL (847) 705-4247

CONTRACT NO. 62H81

US RTE 41
END PROJECT:
STA. 219+61.9



US RTE 41
BEGIN PROJECT:
STA. 116+73.7

WARREN TOWNSHIP

GROSS LENGTH = 10288.20 FT = 1.949 MI
NET LENGTH = 10288.20 FT = 1.949 MI

STATE OF ILLINOIS
DEPARTMENT OF TRANSPORTATION

SUBMITTED January 15 2019

Anthony J. Quigley / *AS*
REGIONAL ENGINEER

March 22 2019

Paul P. Chif
ENGINEER OF DESIGN AND ENVIRONMENT

March 22 2019

Paul P. Chif
DIRECTOR OF HIGHWAYS PROJECT IMPLEMENTATION

PRINTED BY THE AUTHORITY
OF THE STATE OF ILLINOIS

INDEX OF SHEETS

<u>SHEET NO.</u>	<u>DESCRIPTION</u>
1	COVERSHEET
2	INDEX OF SHEETS & STANDARDS
3	GENERAL NOTES
4	SUMMARY OF QUANTITIES
6	TYPICAL SECTIONS
9	ROADWAY AND PAVEMENT MARKING PLANS
12A	SIDEWALK AND TRAFFIC SCHEDULE OF QUANTITIES
13	ADA SIDEWALK DETAILS
13A	BD-08: DETAILS FOR FRAMES AND LIDS ADJUSTEMENT WITH MILLING
14	BD-22: PAVEMENT PATCHING FOR HMA SURFACED PAVEMENT
15	BD-24: CURB OR CURB AND GUTTER REMOVAL AND REPLACEMENT
16	BD-33: HMA TAPER AT EDGE OF PCC PAVEMENT
17	TC-10: TRAFFIC CONTROL AND PROTECTION FOR SIDE ROADS, INTERSECTIONS, AND DRIVEWAYS
18	TC-11: TYPICAL APPLICATIONS RAISED REFLECTIVE PAVEMENT MARKERS (SNOW-PLOW RESISTANT)
19	TC-13: DISTRICT ONE TYPICAL PAVEMENT MARKINGS
20	TC-14: TRAFFIC CONTROL AND PROTECTION AT TURN BAYS (TO REMAIN OPEN TO TRAFFIC)
21	TC-16: SHORT TERM PAVEMENT MARKING LETTERS AND SYMBOLS
22	TC-22: ARTERIAL ROAD INFORMATION SIGN
22A	TS-05: STANDARD TRAFFIC SIGNAL DESIGN DETAILS (SHEET 4)

LIST OF STATE STANDARDS

<u>STANDARD NO.</u>	<u>DESCRIPTION</u>
000001-07	STANDARD SYMBOLS, ABBREVIATIONS AND PATTERNS
424001-11	PERPENDICULAR CURB RAMPS FOR SIDEWALKS
442201-03	CLASS C AND D PATCHES
482011-03	HMA SHOULDER STRIPS/SHOULDERS WITH RESURFACING OR WIDENING AND RESURFACING PROJECTS
606001-07	CONCRETE CURB TYPE B AND COMBINATION CONCRETE CURB AND GUTTER
630001-12	STEEL PLATE BEAM GUARDRAIL
642001-02	SHOULDER RUMBLE STRIPS, 16 IN.
642006	SHOULDER RUMBLE STRIPS, 8 IN.
701101-05	OFF-ROAD OPERATIONS, MULTILANE, 15' (4.5 M) TO 24" (600 MM) FROM PAVEMENT EDGE
701421-08	LANE CLOSURE, MULTILANE, DAY OPERATIONS ONLY, FOR SPEEDS ≥ 45 MPH TO 55 MPH
701426-09	LANE CLOSURE, MULTILANE, INTERMITTENT OR MOVING OPERATION, FOR SPEEDS ≥ 45 MPH
701701-10	URBAN LANE CLOSURE, MULTILANE INTERSECTION
701901-08	TRAFFIC CONTROL DEVICES
780001-05	TYPICAL PAVEMENT MARKINGS
782006	GUARDRAIL AND BARRIER WALL REFLECTOR MOUNTING DETAILS
814001-03	HANDHOLES

MODEL: Default
 FILE: \\blm1c1-pub\blm1room\dat\illinois.gov\PWIDOT\Documents\DOT_Offices\District_1\Projects\112319\CaddData\Design\112319-sh-generat.dgn

USER NAME = rostkowskir	DESIGNED - RR	REVISED -
	DRAWN - RR	REVISED -
PLOT SCALE = 100.0000 ' / in.	CHECKED - KS	REVISED -
PLOT DATE = 3/19/2019	DATE - 1/31/2019	REVISED -

**STATE OF ILLINOIS
 DEPARTMENT OF TRANSPORTATION**

INDEX OF SHEETS AND STATE STANDARDS			
US RTE 41 (SKOKIE HIGHWAY); FERNDAL ST TO IL RTE 21			
SCALE: NONE	SHEET 1	OF 1 SHEETS	STA. - TO STA. -

F.A.P. RTE.	SECTION	COUNTY	TOTAL SHEETS	SHEET NO.
346	2019-008-I	LAKE	22	2
				CONTRACT NO. 62H81
		ILLINOIS	FED. AID PROJECT	

GENERAL NOTES

1. BEFORE STARTING ANY EXCAVATION, THE CONTRACTOR SHALL CALL "J.U.L.I.E." AT (800) 892-0123 OR 811 FOR FIELD LOCATIONS OF BURIED ELECTRIC, TELEPHONE AND GAS UTILITIES. 48 HOUR NOTIFICATION IS REQUIRED.
2. TEN (10) FOOT TRANSITIONS SHALL BE USED TO MATCH PROPOSED CURB AND GUTTER AND MEDIAN ITEMS OF WORK TO EXISTING CURBS AND GUTTER AND MEDIANS IN THE FIELD, UNLESS OTHERWISE SHOWN. THE TRANSITIONS SHALL BE PAID FOR AT THE CONTRACT UNIT PRICE FOR THE PROPOSED ITEMS OF WORK SPECIFIED.
3. THE CONTRACTOR SHALL COORDINATE CONSTRUCTION ACTIVITIES WITH UTILITY COMPANIES, VILLAGE OF GURNEE, AND LAKE COUNTY.
4. THE CONTRATOR WILL NOT BE ALLOWED TO SET UP A YARD OR FIELD OFFICE ON STATE PROPERTY WITHOUT WRITTEN PERMISSION FROM THE DEPARTMENT.
5. ANY PAVEMENT MARKINGS AND RAISED REFLECTIVE PAVEMENT MARKERS OBLITERATED BY MILLING AND RESURFACING OPERATIONS ON SIDE STREETS AND ENTRANCES SHALL BE REPLACED AND PAID FOR IN KIND.
6. ALL DAMAGE TO EXISTING PAVEMENT MARKINGS OR RAISED REFLECTIVE PAVEMENT MARKERS OUTSIDE THE REMOVAL LINE SHOWN ON THE PLANS SHALL BE REPLACED AT NO ADDITIONAL COST TO THE DEPARTMENT.
7. BEFORE BEGINNING ANY WORK, THE CONTRACTOR SHALL RETAIN AND RECORD FOR FUTURE REFERENCE ALL EXISTING PAVEMENT MARKING LINES (AND RAISED REFLECTIVE PAVEMENT MARKERS) IN ORDER THAT THESE LOCATIONS CAN BE RE-ESTABLISHED FOR STRIPING. EXACT LOCATIONS OF ALL PAVEMENT MARKINGS SHALL BE AS DIRECTED BY THE ENGINEER.
8. ALL PAVEMENT PATCHING LOCATIONS WILL BE DETERMINED IN THE FIELD BY THE ENGINEER.
9. LOCATION OF COMBINATION CONCRETE CURB AND GUTTER REMOVAL AND REPLACEMENT WILL BE DETERMINED IN THE FIELD BY THE ENGINEER.
10. DRAINAGE ADJUSTEMENT OR RECONSTRUCTION LOCATIONS WILL BE DETERMINED IN THE FIELD BY THE ENGINEER.
11. IT SHALL BE THE CONTRACTOR'S RESPONSIBILITY TO VERIFY ALL DIMENSIONS AND CONDITIONS EXISTING IN THE FIELD PRIOR TO CONSTRUCTION AND ORDERING OF MATERIALS.
12. THE CONTRACTOR SHALL CONTACT THE DISTRICT ONE TRAFFIC CONTROL SUPERVISOR AT VIA EMAIL AT KALPANA.KANNAN-HOSADURGA@ILLINOIS.GOV A MINIMUM OF 72 HOURS IN ADVANCE OF BEGINNING WORK.
13. THE RESIDENT ENGINEER SHALL CONTACT WALTER CZARNY, AREA TRAFFIC FIELD ENGINEER, VIA EMAIL AT WALTER.CZARNY@ILLINOIS.GOV A MINIMUM OF TWO (2) WEEKS PRIOR TO THE PLACEMENT OF PERMANENT PAVEMENT MARKINGS.
14. THESE PLANS HAVE BEEN PREPARED FROM NOTES RECEIVED FROM THE BUREAUS OF CONSTRUCTION AND MATERIALS.
15. THE THICKNESS OF THE HMA MIXTURE SHOWN ON THE PLANS IS THE NOMINAL THICKNESS. DEVIATIONS FROM THE NOMINAL THICKNESS WILL BE PERMITTED WHEN SUCH DEVIATIONS OCCUR DUE TO IRREGULATIES IN THE EXISTING SURFACE OR BASE ON WHICH THE HMA MISTURE IS PLACED.
16. THE CONTRACTOR SHALL BE REQUIRED TO PROVIDE ACCESS TO ABUTTING PROPERTY AT ALL TIMES DURING THE CONSTRUCTION OF THIS PROJECT.
17. EXISTING BROKEN FRAMES AND LIDS SHALL BE REMOVED AND DISPOSED OF BY THE CONTRACTOR AND SHALL BE REPLACED AS DIRECTED BY THE ENGINEER. RREPLACEMENT FRAMES AND LIDS WILL BE PAID FOR ACCORDING TO ARTICLE 109.04 OF THE STANDARD SPECIFICATIONS UNLESS A SEPERATE PAY ITEM HAS BEEN PROVIDED.
18. THE CONTRACTOR SHALL BE RESPONSIBLE FOR THE NOTIFICATION OF ALL EMERGENCY SERVICES, SCHOOL DISTRICTS, IDOT'S COMMUNICATIONS CENTER, SPRINGFIELD TRUCK PERMIT SECTION AND OTHER AGENCIES AFFECTED BY THE CLOSURE. THE CONTRACTOR SHALL ALSO BE RESPONSIBLE FOR POSTING SIGNS THAT WILL INDICATE THE DATES THE CLOSURE WILL BE IN PLACE.
19. DO NOT SCALE PLANS FOR CONSTRUCTION DIMENSIONS.
20. DOUBLE LANE MARKERS ARE TO BE USED AS SHOWN ON THE DISTRICT ONE DETAIL "TYPICAL APPLICATIONS - RAISED REFLECTIVE PAVEMENT MARKERS (SNOW-PLOW RESISTANT)" SHOWN IN THE PLANS.
21. PAVEMENT MARKING TAPE, TYPE III SHALL BE USED FOR SHORT TERM PAVEMENT MARKINGS ON ALL FINAL SURFACES.

MODEL: Default
 FILE: \\nashville.pw.us\pub\baronm.d\at\illinois.gov\PWIDOT\Documents\DOT_Offices\District_1\Projects\ID112319\CaddData\Design\0112319_sht-general-notes.dgn

USER NAME = rostkowski PLOT SCALE = 100.0000' / in. PLOT DATE = 3/19/2019	DESIGNED - RR	REVISED -	STATE OF ILLINOIS DEPARTMENT OF TRANSPORTATION	GENERAL NOTES US RTE 41 (SKOKIE HIGHWAY); FERNDAL ST TO IL RTE 21	F.A.P. RTE.	SECTION	COUNTY	TOTAL SHEETS	SHEET NO.
	DRAWN - RR	REVISED -			346	2019-008-I	LAKE	22	3
	CHECKED - KS	REVISED -			CONTRACT NO. 62H81				
DATE - 1/31/2019	REVISED -	SCALE: NONE	SHEET 1 OF 1 SHEETS	STA. -	TO STA. -	ILLINOIS FED. AID PROJECT			

SUMMARY OF QUANTITIES			URBAN TOTAL QUANTITIES	CONSTRUCTION TYPE CODE	
CODE NO	ITEM	UNIT		0005 ROADWAY 80% FED. 20% STATE	
20200100	EARTH EXCAVATION	CU YD	2	2	
21101615	TOPSOIL FURNISH AND PLACE, 4"	SQ YD	11	11	
25000400	NITROGEN FERTILIZER NUTRIENT	POUND	1	1	
25000600	POTASSIUM FERTILIZER NUTRIENT	POUND	1	1	
25200110	SODDING, SALT TOLERANT	SQ YD	9	9	
40600400	MIXTURE FOR CRACKS, JOINTS, AND FLANGEWAYS	TON	130	130	
40600982	HOT-MIX ASPHALT SURFACE REMOVAL - BUTT JOINT	SQ YD	1189	1189	
42001300	PROTECTIVE COAT	SQ YD	83	83	
42400200	PORTLAND CEMENT CONCRETE SIDEWALK 5 INCH	SQ FT	166	166	
* 42400800	DETECTABLE WARNINGS	SQ FT	10	10	
44000600	SIDEWALK REMOVAL	SQ FT	153	153	
44201863	CLASS D PATCHES, TYPE II, 18 INCH	SQ YD	371	371	
44201867	CLASS D PATCHES, TYPE III, 18 INCH	SQ YD	742	742	
44201869	CLASS D PATCHES, TYPE IV, 18 INCH	SQ YD	742	742	
60300305	FRAMES AND LIDS TO BE ADJUSTED	EACH	15	15	

SUMMARY OF QUANTITIES			URBAN TOTAL QUANTITIES	CONSTRUCTION TYPE CODE	
CODE NO	ITEM	UNIT		0005 ROADWAY 80% FED. 20% STATE	
67000400	ENGINEER'S FIELD OFFICE, TYPE A	CAL MO	3	3	
67100100	MOBILIZATION	L SUM	1	1	
70100310	TRAFFIC CONTROL AND PROTECTION, STANDARD 701421	L SUM	1	1	
70102635	TRAFFIC CONTROL AND PROTECTION, STANDARD 701701	L SUM	1	1	
70200100	NIGHTTIME WORK ZONE LIGHTING	L SUM	1	1	
70300210	TEMPORARY PAVEMENT MARKING LETTERS AND SYMBOLS	SQ FT	566	566	
70300220	TEMPORARY PAVEMENT MARKING - LINE 4"	FOOT	42465	42465	
70300240	TEMPORARY PAVEMENT MARKING - LINE 6"	FOOT	2587	2587	
70300250	TEMPORARY PAVEMENT MARKING - LINE 8"	FOOT	233	233	
70300260	TEMPORARY PAVEMENT MARKING - LINE 12"	FOOT	392	392	
70300280	TEMPORARY PAVEMENT MARKING - LINE 24"	FOOT	369	369	
70300520	PAVEMENT MARKING TAPE, TYPE III 4"	FOOT	5669	5669	
* 78000100	THERMOPLASTIC PAVEMENT MARKING - LETTERS AND SYMBOLS	SQ FT	566	566	
* 78000200	THERMOPLASTIC PAVEMENT MARKING - LINE 4"	FOOT	42465	42465	
* 78000400	THERMOPLASTIC PAVEMENT MARKING - LINE 6"	FOOT	2587	2587	
					* SPECIALTY ITEMS

MODEL: Default
 FILE NAME: P:\1108\BARDON\TEC\Illinois.gov\PI\DOT\Documents\DOT Offices\District 1\Project\US 41\CADD\Bard\Design\US1-int-SQO.dgn

USER NAME = rostkowski	DESIGNED - RR	REVISED -
	DRAWN - RR	REVISED -
PLOT SCALE = 100.0000' / in.	CHECKED - KS	REVISED -
PLOT DATE = 2/6/2019	DATE - 1/31/2019	REVISED -

**STATE OF ILLINOIS
DEPARTMENT OF TRANSPORTATION**

**SCHEDULE OF QUANTITIES
US RTE 41 (SKOKIE HIGHWAY); FERNDAL ST TO IL RTE 21**

SCALE: NONE SHEET 1 OF 2 SHEETS STA. - TO STA. -

F.A.P. RTE.	SECTION	COUNTY	TOTAL SHEETS	SHEET NO.
346	2019-008-I	LAKE	22	4
			CONTRACT NO. 62H81	
ILLINOIS FED. AID PROJECT				

SUMMARY OF QUANTITIES			URBAN TOTAL QUANTITIES	CONSTRUCTION TYPE CODE	
CODE NO	ITEM	UNIT		0005 ROADWAY	80% FED. 20% STATE
*78000500	THERMOPLASTIC PAVEMENT MARKING - LINE 8"	FOOT	233	233	
*78000600	THERMOPLASTIC PAVEMENT MARKING - LINE 12"	FOOT	392	392	
*78000650	THERMOPLASTIC PAVEMENT MARKING - LINE 24"	FOOT	369	369	
*78100100	RAISED REFLECTIVE PAVEMENT MARKER	EACH	532	532	
78300200	RAISED REFLECTIVE PAVEMENT MARKER REMOVAL	EACH	450	450	
X0320050	CONSTRUCTION LAYOUT (SPECIAL)	L SUM	1	1	*
X0326129	ULTRA-THIN HOT-MIX ASPHALT SURFACE COURSE	SQ YD	86597	86597	*
#X5537800	STORM SEWERS TO BE CLEANED 12"	FOOT	500	500	
X7030005	TEMPORARY PAVEMENT MARKING REMOVAL	SQ FT	19190	19190	
Z0004562	COMBINATION CONCRETE CURB AND GUTTER REMOVAL AND REPLACEMENT	FOOT	300	300	
#Z0018500	DRAINAGE STRUCTURES TO BE CLEANED	EACH	20	20	
Z0030850	TEMPORARY INFORMATION SIGNING	SQ FT	77	77	
Z0034105	MATERIAL TRANSFER DEVICE	TON	3897	3897	
40600250	RAPID SETTING POLYMER MODIFIED EMULSION	POUND	148,081	148,081	

SUMMARY OF QUANTITIES			URBAN TOTAL QUANTITIES	CONSTRUCTION TYPE CODE	
CODE NO	ITEM	UNIT		0005 ROADWAY	80% FED. 20% STATE
40600985	PORTLAND CEMENT CONCRETE SURFACE REMOVAL - BUTT JOINT	SQ YD	58	58	
48102100	AGGREGATE WEDGE SHOULDER, TYPE B	TON	554	554	
64200108	SHOULDER RUMBLE STRIPS, 8 INCH	FOOT	11377	11377	
60250200	CATCH BASINS TO BE ADJUSTED	EACH	2	2	
64200108	SHOULDER RUMBLE STRIPS, 16 INCH	FOOT	13268	13268	
*85000200	MAINTENANCE OF EXISTING TRAFFIC SIGNAL INSTALLATION	EACH	2	2	
*89502376	REBUILD EXISTING HANDHOLE	EACH	6	6	
X2020110	GRADING AND SHAPING SHOULDERS	UNIT	33	33	
X4401198	HOT-MIX ASPHALT SURFACE REMOVAL, VARIABLE DEPTH	SQ YD	4741	4741	
X6330900	VERTICLE ADJUSTMENT OF GUARDRAIL	FOOT	2690	2690	
			* SPECIALTY ITEMS # NON-PARTICIPATING ITEMS (100% STATE)		

MODEL: Default
 FILE NAME: P:\1110848\BID\NTEG_IL\inois.gov\PW\DOT\Documents\DOT_Offices\District_1\Projects\US_41\CAD\Drawings\US1-1-ht-500.dgn

USER NAME = rostkowski	DESIGNED - RR	REVISED -
	DRAWN - RR	REVISED -
PLOT SCALE = 100.0000 ' / in.	CHECKED - KS	REVISED -
PLOT DATE = 2/6/2019	DATE - 1/31/2019	REVISED -

STATE OF ILLINOIS
DEPARTMENT OF TRANSPORTATION

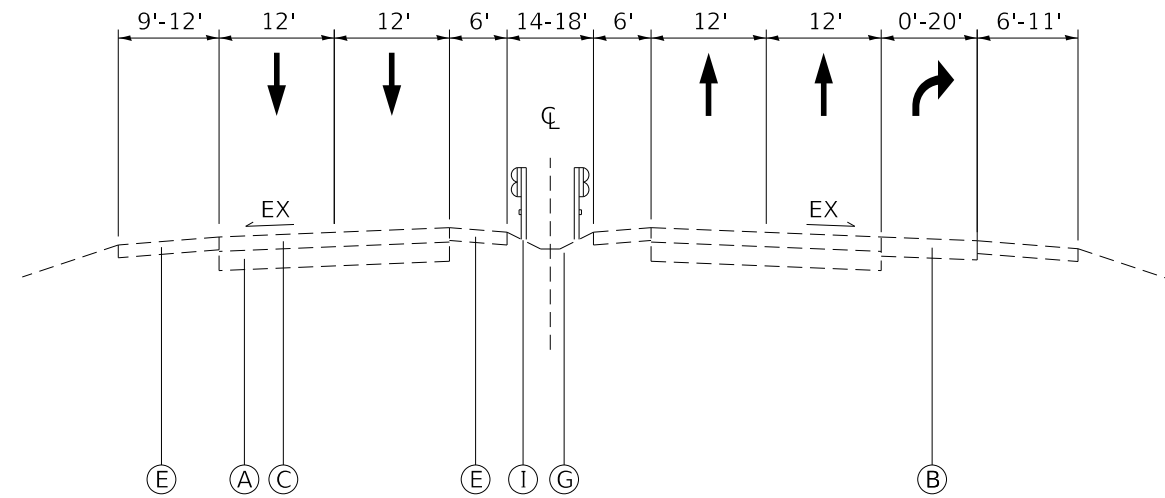
SCHEDULE OF QUANTITIES
US RTE 41 (SKOKIE HIGHWAY); FERNDALE ST TO IL RTE 21

F.A.P. RTE.	SECTION	COUNTY	TOTAL SHEETS	SHEET NO.
346	2019-008-I	LAKE	22	5
CONTRACT NO. 62H81				
ILLINOIS FED. AID PROJECT				

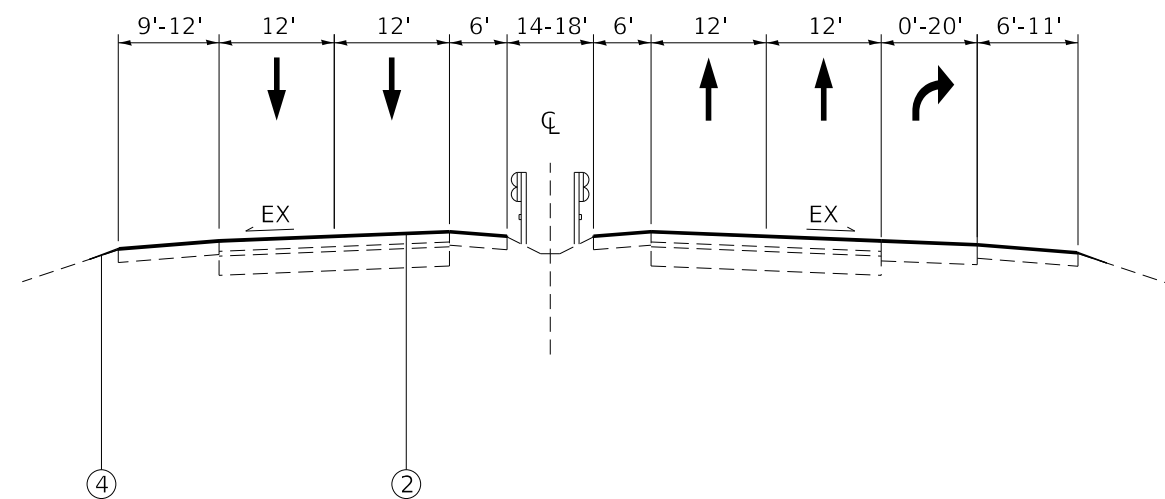
SCALE: NONE | SHEET 2 OF 2 SHEETS | STA. - TO STA. -

LEGEND

- (A) EXISTING PCC PAVEMENT, ±9"
- (B) EXISTING PCC SURFACE PAVEMENT
- (C) EXISTING HMA SURFACE PAVEMENT, 9"
- (D) EXISTING HMA SHOULDER
- (E) EXISTING PCC SHOULDER
- (F) EXISTING AGGREGATE SHOULDER
- (G) EXISTING GRASS MEDIAN
- (H) EXISTING PCC MEDIAN
- (I) EXISTING GUARDRAIL
- (J) EXISTING CURB AND GUTTER
- (1) PROPOSED HMA SURFACE REMOVAL, VARIABLE DEPTH
- (2) ULTRA-THIN HOT-MIX ASPHALT SURFACE COURSE, MIX F, TYPE C, 90 LBS/SQYD
- (3) GRADING AND SHAPING SHOULDERS
- (4) AGGREGATE WEDGE SHOULDER



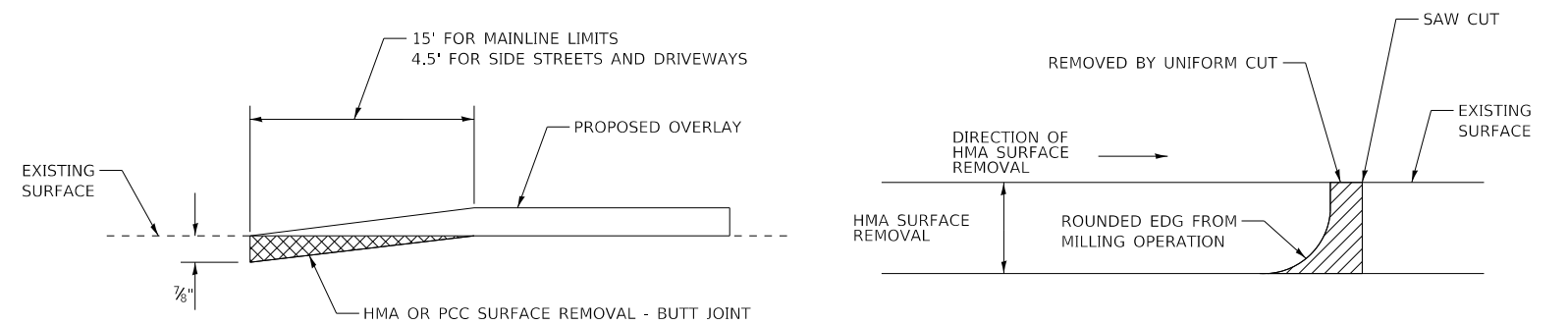
EXISTING TYPICAL SECTION
 NB STA 127+25 TO STA 129+92
 SB STA 116+73.9 TO STA 127+84



PROPOSED TYPICAL SECTION
 NB STA 127+25 TO STA 129+92
 SB STA 116+73.9 TO STA 127+84

HOT-MIX ASPHALT MIXTURE REQUIREMENTS		QUALITY MANAGEMENT PROGRAM (QMP)
MIXTURE TYPE	AIR VOIDS @ Ndes	
PATCHING		
CLASS D PATCHES (HMA BINDER IL-19 mm)	4% AT 70 GYR.	QC/QA
QMP DESIGNATION: QUALITY CONTROL/QUALITY ASSURANCE (QC/QA); QUALITY CONTROL FOR PERFORMANCE (QCP)		

- NOTE 1: THE UNIT WEIGHT USED TO CALCULATE ALL HMA SURFACE MIXTURE QUANTITIES IS 112 LBS/SQ YD/IN.
- NOTE 2: THE "AC TYPE" FOR POLYMERIZED HMA MIXES SHALL BE "SBS/SBR PG 76-22" AND FOR NON-POLYMERIZED HMA THE "AC TYPE" SHALL BE "PG 64-22" UNLESS MODIFIED BY DISTRICT ONE SPECIAL PROVISIONS. FOR USE OF RECYCLED MATERIALS SEE SPECIAL PROVISIONS.
- NOTE 3: QUALITY MANAGEMENT PROGRAM (QMP) IDENTIFIES THE PARTICULAR QUALITY CONTROL SPECIFICATION THAT APPLIES TO THE HMA MIXTURE.
- NOTE 4: THE CONTRACTOR SHALL PATCH FIRST. HMA REMOVAL AND REPLACEMENT OVER PATCHES IS NOT REQUIRED. THE PATCH SURFACE SHALL MATCH EXISTING PAVEMENT SURFACE.
- NOTE 5: SEE ULTRA-THIN BONDED WEARING COURSE SPECIAL PROVISION FOR ULTRA-THIN HMA SURFACE COURSE, MIX F, TYPE C MIX SPECIFICATIONS.



BUTT JOINT TAPER DETAIL

HMA DETAIL AT BUTT JOINTS

NOTE: WHEN MILLING OPERATION PRODUCE A ROUNDED EDGE, THEN SAW CUT SHALL BE USED TO MANUFACTURE A PERPENDICULAR EDGE AS SHOWN IN THE DETAIL. THE ENGINEER SHALL BE THE SOLE JUDGE CONCERNING THE USE OF THIS DETAIL

MODEL: Default
 FILE: \\nashville.pwdot.com\data\illinois.gov\PWIDOT\Documents\DOT_Offices\District 1\Projects\112319\CADD\Drawings\112319-sh-ty-secal.dgn

USER NAME = rostkowskir	DESIGNED - RR	REVISED -
PLOT SCALE = 100,0000 ' / in.	CHECKED - KS	REVISED -
PLOT DATE = 3/19/2019	DATE - 1/31/2019	REVISED -

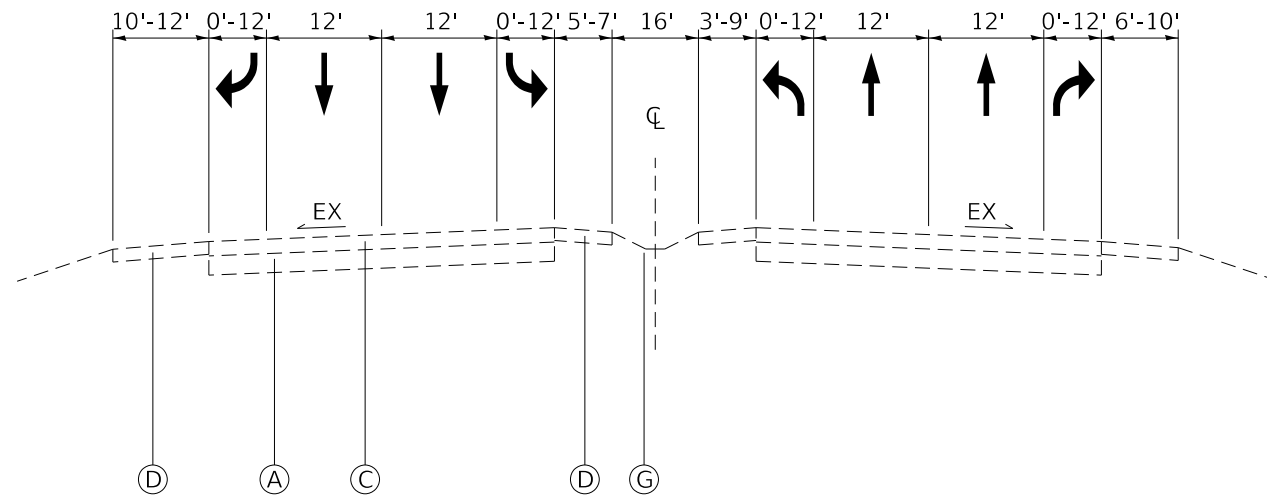
**STATE OF ILLINOIS
 DEPARTMENT OF TRANSPORTATION**

TYPICAL SECTIONS		
US RTE 41 (SKOKIE HIGHWAY); FERNDAL ST TO IL RTE 21		
SCALE: NONE	SHEET 1 OF 3 SHEETS	STA. - TO STA. -

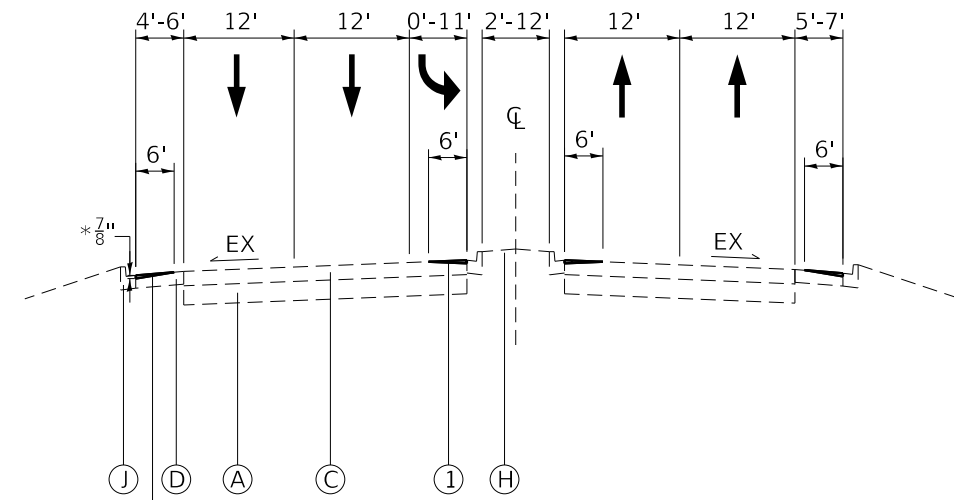
F.A.P. RTE.	SECTION	COUNTY	TOTAL SHEETS	SHEET NO.
346	2019-008-I	LAKE	22	6
CONTRACT NO. 62H81				
ILLINOIS FED. AID PROJECT				

LEGEND

- (A) EXISTING PCC PAVEMENT, ±9"
- (B) EXISTING PCC SURFACE PAVEMENT
- (C) EXISTING HMA SURFACE PAVEMENT, 9"
- (D) EXISTING HMA SHOULDER
- (E) EXISTING PCC SHOULDER
- (F) EXISTING AGGREGATE SHOULDER
- (G) EXISTING GRASS MEDIAN
- (H) EXISTING PCC MEDIAN
- (I) EXISTING GUARDRAIL
- (J) EXISTING CURB AND GUTTER
- (1) PROPOSED HMA SURFACE REMOVAL, VARIABLE DEPTH
- (2) ULTRA-THIN HOT-MIX ASPHALT SURFACE COURSE, MIX F, TYPE C, 90 LBS/SQYD
- (3) GRADING AND SHAPING SHOULDERS
- (4) AGGREGATE WEDGE SHOULDER

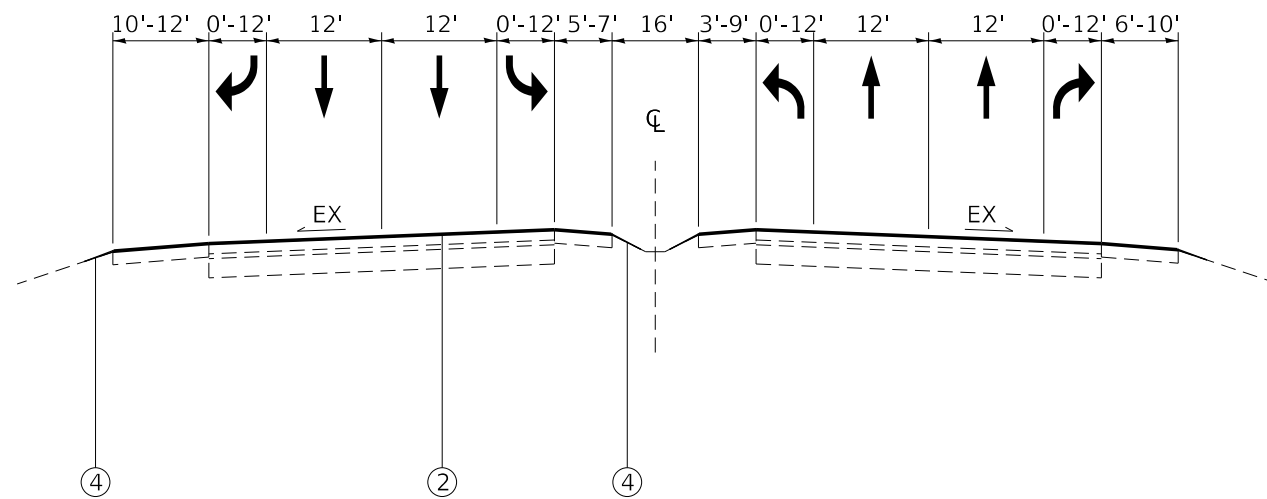


EXISTING TYPICAL SECTION
NB STA 129+92 TO STA 162+81
SB STA 127+84 TO STA 162+81

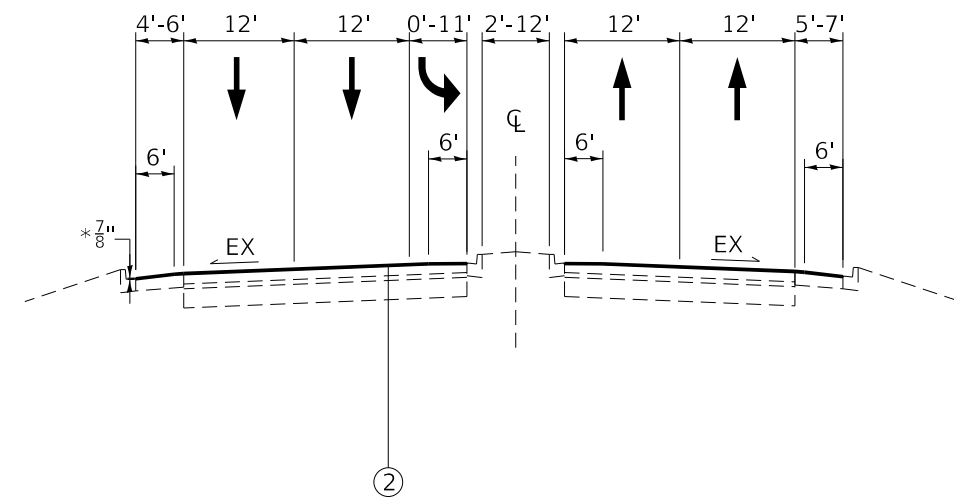


EXISTING TYPICAL SECTION
STA 162+81 TO STA 182+38

* SEE DETAIL BD33 FOR MORE INFORMATION



PROPOSED TYPICAL SECTION
NB STA 129+92 TO STA 162+81
SB STA 127+84 TO STA 162+81



PROPOSED TYPICAL SECTION
STA 162+81 TO STA 182+38

MODEL: Default
FILE: \\nashville.pw.gov\pub\baronson.d\all\links\gov\PWIDOT\Documents\DOT_Offices\Director_1\Projects\112319\Cadd\Drawings\112319-shs-ty-cal.dgn

USER NAME = rostkowski	DESIGNED - RR	REVISED -
	DRAWN - RR	REVISED -
PLOT SCALE = 100.0000' / in.	CHECKED - KS	REVISED -
PLOT DATE = 3/19/2019	DATE - 1/31/2019	REVISED -

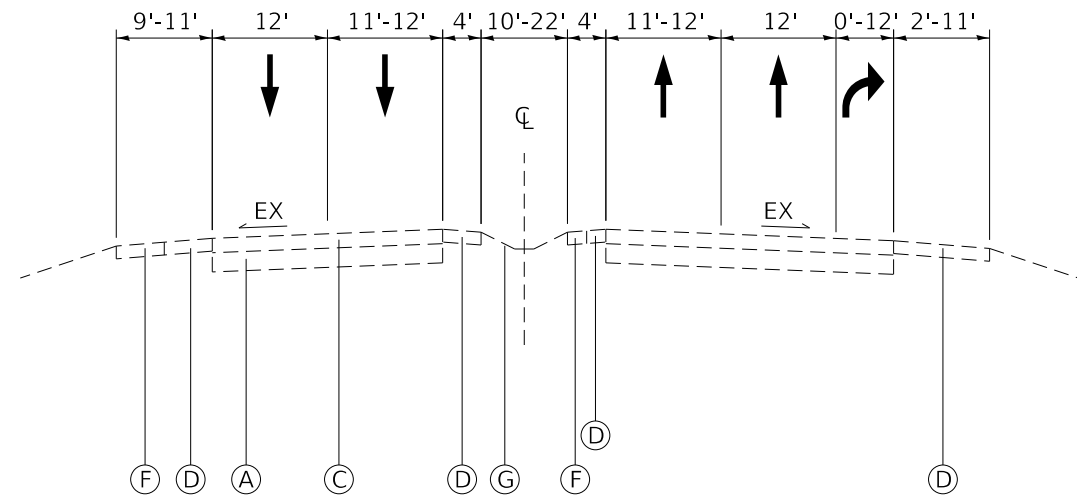
**STATE OF ILLINOIS
DEPARTMENT OF TRANSPORTATION**

TYPICAL SECTIONS			
US RTE 41 (SKOKIE HIGHWAY); FERDALE ST TO IL RTE 21			
SCALE: NONE	SHEET 2	OF 3 SHEETS	STA. - TO STA. -

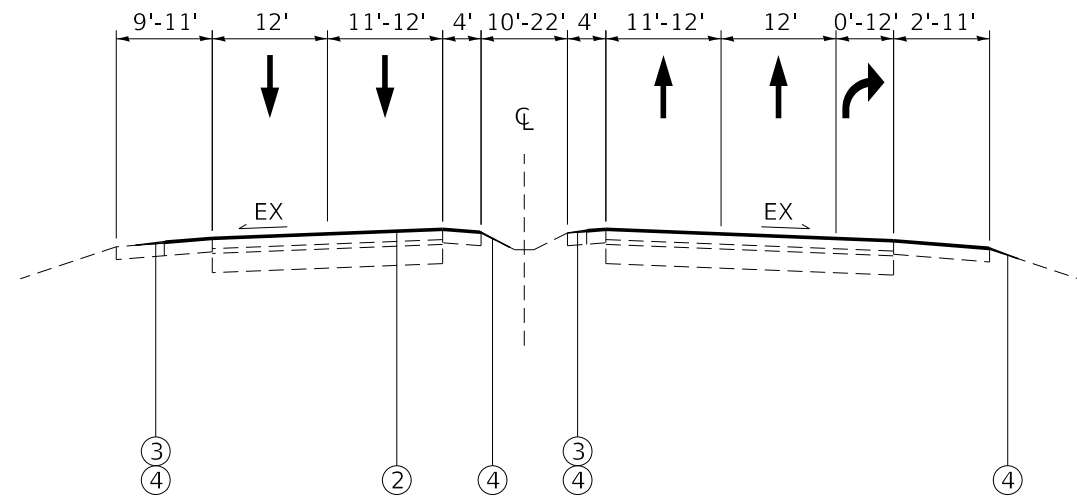
F.A.P. RTE.	SECTION	COUNTY	TOTAL SHEETS	SHEET NO.
346	2019-008-I	LAKE	22	7
CONTRACT NO. 62H81				
ILLINOIS FED. AID PROJECT				

LEGEND

- (A) EXISTING PCC PAVEMENT, ±9"
- (B) EXISTING PCC SURFACE PAVEMENT
- (C) EXISTING HMA SURFACE PAVEMENT, 9"
- (D) EXISTING HMA SHOULDER
- (E) EXISTING PCC SHOULDER
- (F) EXISTING AGGREGATE SHOULDER
- (G) EXISTING GRASS MEDIAN
- (H) EXISTING PCC MEDIAN
- (I) EXISTING GUARDRAIL
- (J) EXISTING CURB AND GUTTER
- ① PROPOSED HMA SURFACE REMOVAL, VARIABLE DEPTH
- ② ULTRA-THIN HOT-MIX ASPHALT SURFACE COURSE, MIX F, TYPE C, 90 LBS/SQYD
- ③ GRADING AND SHAPING SHOULDERS
- ④ AGGREGATE WEDGE SHOULDER



EXISTING TYPICAL SECTION
STA 182+38 TO STA 219+61.9



PROPOSED TYPICAL SECTION
STA 182+38 TO STA 219+61.9

MODEL: Default
 FILE: \\nashville-planningroom.dati\illinois.gov\PI\DOT\Documents\DOT_Offices\Director_1\Projects\112319\CADD\Drawings\112319-sh-h-cv-cal.dgn

USER NAME = rostkowskir	DESIGNED - RR	REVISED -
	DRAWN - RR	REVISED -
PLOT SCALE = 100,0000' / in.	CHECKED - KS	REVISED -
PLOT DATE = 3/19/2019	DATE - 1/31/2019	REVISED -

**STATE OF ILLINOIS
DEPARTMENT OF TRANSPORTATION**

**TYPICAL SECTIONS
US RTE 41 (SKOKIE HIGHWAY); FERNDAL ST TO IL RTE 21**

SCALE: NONE SHEET 3 OF 3 SHEETS STA. - TO STA. -

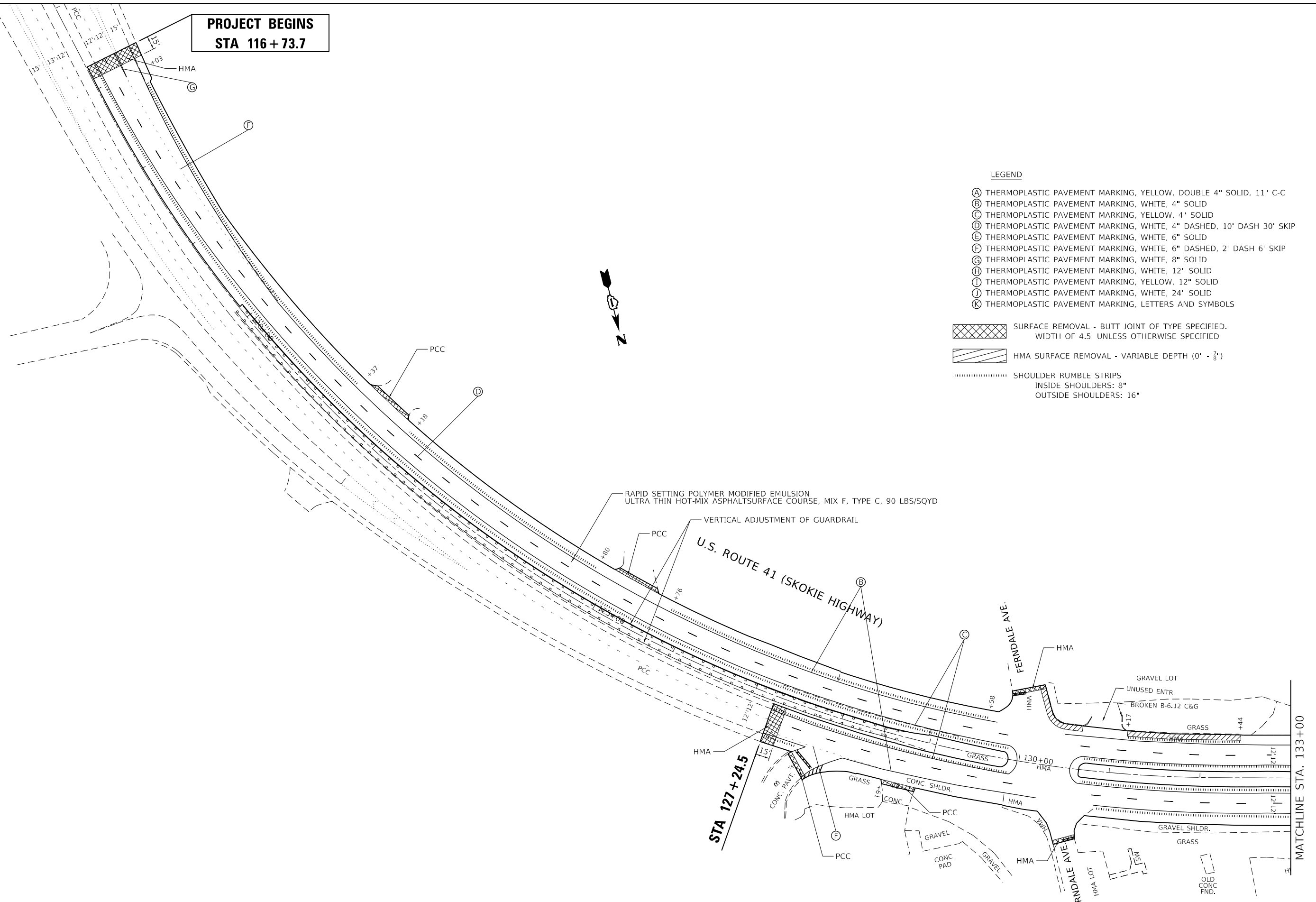
F.A.P. RTE.	SECTION	COUNTY	TOTAL SHEETS	SHEET NO.
346	2019-008-I	LAKE	22	8
CONTRACT NO. 62H81				
ILLINOIS		FED. AID PROJECT		

**PROJECT BEGINS
STA 116+73.7**

LEGEND

- (A) THERMOPLASTIC PAVEMENT MARKING, YELLOW, DOUBLE 4" SOLID, 11" C-C
- (B) THERMOPLASTIC PAVEMENT MARKING, WHITE, 4" SOLID
- (C) THERMOPLASTIC PAVEMENT MARKING, YELLOW, 4" SOLID
- (D) THERMOPLASTIC PAVEMENT MARKING, WHITE, 4" DASHED, 10' DASH 30' SKIP
- (E) THERMOPLASTIC PAVEMENT MARKING, WHITE, 6" SOLID
- (F) THERMOPLASTIC PAVEMENT MARKING, WHITE, 6" DASHED, 2' DASH 6' SKIP
- (G) THERMOPLASTIC PAVEMENT MARKING, WHITE, 8" SOLID
- (H) THERMOPLASTIC PAVEMENT MARKING, WHITE, 12" SOLID
- (I) THERMOPLASTIC PAVEMENT MARKING, YELLOW, 12" SOLID
- (J) THERMOPLASTIC PAVEMENT MARKING, WHITE, 24" SOLID
- (K) THERMOPLASTIC PAVEMENT MARKING, LETTERS AND SYMBOLS

- [Cross-hatched] SURFACE REMOVAL - BUTT JOINT OF TYPE SPECIFIED.
WIDTH OF 4.5' UNLESS OTHERWISE SPECIFIED
- [Diagonal lines] HMA SURFACE REMOVAL - VARIABLE DEPTH (0" - 7/8")
- [Dotted lines] SHOULDER RUMBLE STRIPS
INSIDE SHOULDERS: 8"
OUTSIDE SHOULDERS: 16"



RAPID SETTING POLYMER MODIFIED EMULSION
ULTRA THIN HOT-MIX ASPHALT SURFACE COURSE, MIX F, TYPE C, 90 LBS/SQYD

VERTICAL ADJUSTMENT OF GUARDRAIL
U.S. ROUTE 41 (SKOKIE HIGHWAY)

STA 127+24.5

MATCHLINE STA. 133+00

MODEL: Default
 FILE: \\nfs011\pub\pbaroom\dat\illinois\pwr\DOT\Documents\DOT - Offices\Dir\ctc - 1\Projects\112319\CaddData\Design\112319-sh-rl-bar.dgn

USER NAME = rostkowski	DESIGNED - RR	REVISED -
DRAWN - RR	CHECKED - KS	REVISED -
PLOT SCALE = 100,0000' / in.	DATE - 1/31/2019	REVISED -
PLOT DATE = 3/19/2019		

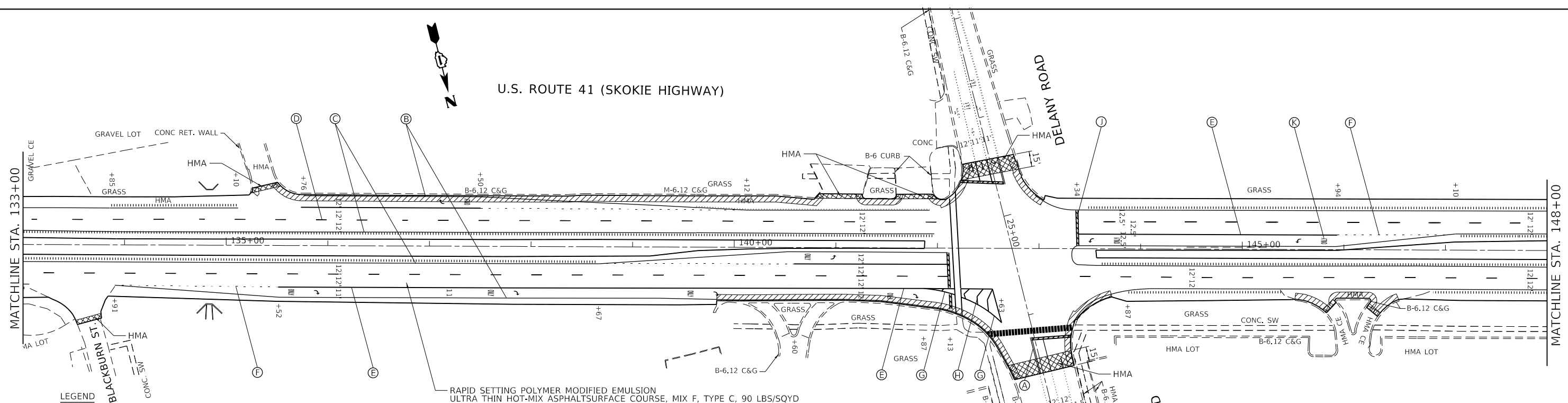
**STATE OF ILLINOIS
DEPARTMENT OF TRANSPORTATION**

**ROADWAY AND PAVEMENT MARKING PLAN
US RTE 41 (SKOKIE HIGHWAY); FERDALE ST TO IL RTE 21**

SCALE: 1"=50' SHEET 1 OF 4 SHEETS STA. - TO STA. -

F.A.P. RTE.	SECTION	COUNTY	TOTAL SHEETS	SHEET NO.
346	2019-008-I	LAKE	22	9
CONTRACT NO. 62H81				
ILLINOIS FED. AID PROJECT				

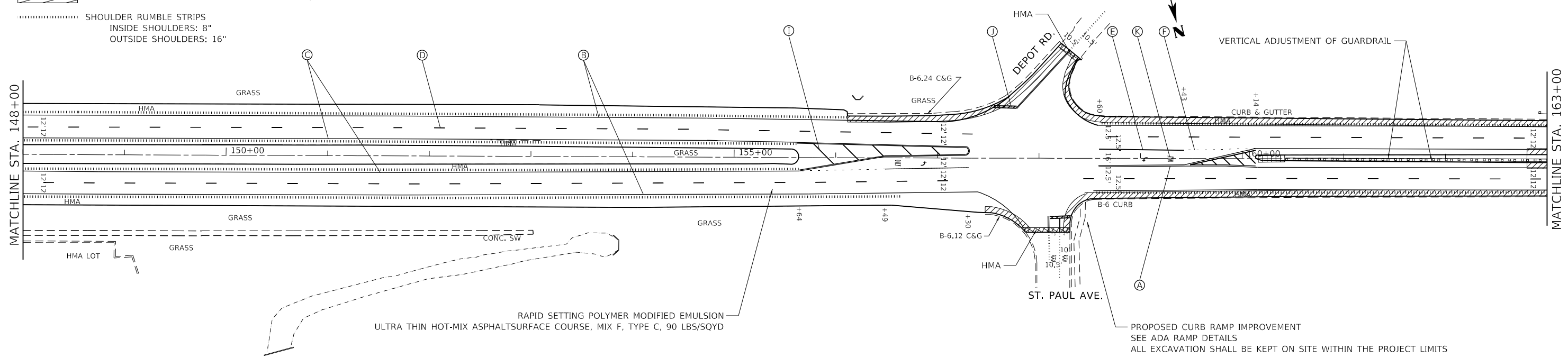
U.S. ROUTE 41 (SKOKIE HIGHWAY)



- LEGEND**
- (A) THERMOPLASTIC PAVEMENT MARKING, YELLOW, DOUBLE 4" SOLID, 11" C-C
 - (B) THERMOPLASTIC PAVEMENT MARKING, WHITE, 4" SOLID
 - (C) THERMOPLASTIC PAVEMENT MARKING, YELLOW, 4" SOLID
 - (D) THERMOPLASTIC PAVEMENT MARKING, WHITE, 4" DASHED, 10' DASH 30' SKIP
 - (E) THERMOPLASTIC PAVEMENT MARKING, WHITE, 6" SOLID
 - (F) THERMOPLASTIC PAVEMENT MARKING, WHITE, 6" DASHED, 2' DASH 6' SKIP
 - (G) THERMOPLASTIC PAVEMENT MARKING, WHITE, 8" SOLID
 - (H) THERMOPLASTIC PAVEMENT MARKING, WHITE, 12" SOLID
 - (I) THERMOPLASTIC PAVEMENT MARKING, YELLOW, 12" SOLID
 - (J) THERMOPLASTIC PAVEMENT MARKING, WHITE, 24" SOLID
 - (K) THERMOPLASTIC PAVEMENT MARKING, LETTERS AND SYMBOLS

- SURFACE REMOVAL - BUTT JOINT OF TYPE SPECIFIED. WIDTH OF 4.5' UNLESS OTHERWISE SPECIFIED
- HMA SURFACE REMOVAL - VARIABLE DEPTH (0" - 3/8")
- SHOULDER RUMBLE STRIPS
INSIDE SHOULDERS: 8"
OUTSIDE SHOULDERS: 16"

U.S. ROUTE 41 (SKOKIE HIGHWAY)



MODEL: Default
 FILE: Model - PavementPlan.dwg
 PROJECT: I:\Projects\112319\CADD\Drawings\112319-Sub-Plan.dwg
 PLOT DATE: 3/19/2019

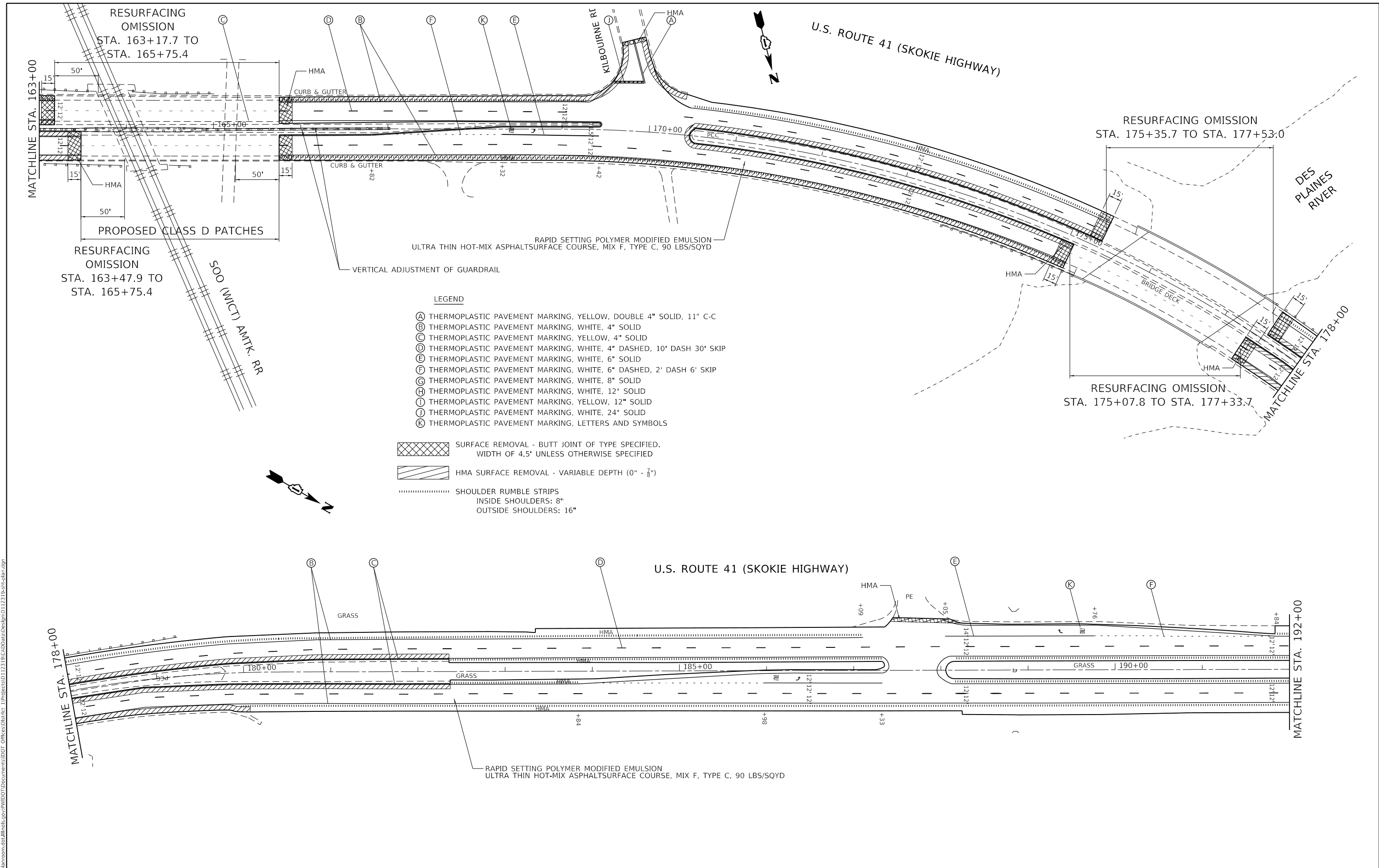
USER NAME = rostkawski	DESIGNED - RR	REVISED -
	DRAWN - RR	REVISED -
PLOT SCALE = 100,0000' / in.	CHECKED - KS	REVISED -
PLOT DATE = 3/19/2019	DATE - 1/31/2019	REVISED -

STATE OF ILLINOIS
DEPARTMENT OF TRANSPORTATION

ROADWAY AND PAVEMENT MARKING PLAN
US RTE 41 (SKOKIE HIGHWAY); FERDALE ST TO IL RTE 21

SCALE: 1"=50' SHEET 2 OF 4 SHEETS STA. - TO STA. -

F.A.P. RTE. 346	SECTION 2019-008-I	COUNTY LAKE	TOTAL SHEETS 22	SHEET NO. 10
ILLINOIS FED. AID PROJECT			CONTRACT NO. 62H81	



- LEGEND**
- (A) THERMOPLASTIC PAVEMENT MARKING, YELLOW, DOUBLE 4" SOLID, 11" C-C
 - (B) THERMOPLASTIC PAVEMENT MARKING, WHITE, 4" SOLID
 - (C) THERMOPLASTIC PAVEMENT MARKING, YELLOW, 4" SOLID
 - (D) THERMOPLASTIC PAVEMENT MARKING, WHITE, 4" DASHED, 10' DASH 30' SKIP
 - (E) THERMOPLASTIC PAVEMENT MARKING, WHITE, 6" SOLID
 - (F) THERMOPLASTIC PAVEMENT MARKING, WHITE, 6" DASHED, 2' DASH 6' SKIP
 - (G) THERMOPLASTIC PAVEMENT MARKING, WHITE, 8" SOLID
 - (H) THERMOPLASTIC PAVEMENT MARKING, WHITE, 12" SOLID
 - (I) THERMOPLASTIC PAVEMENT MARKING, YELLOW, 12" SOLID
 - (J) THERMOPLASTIC PAVEMENT MARKING, WHITE, 24" SOLID
 - (K) THERMOPLASTIC PAVEMENT MARKING, LETTERS AND SYMBOLS

- SURFACE REMOVAL - BUTT JOINT OF TYPE SPECIFIED, WIDTH OF 4.5' UNLESS OTHERWISE SPECIFIED
- HMA SURFACE REMOVAL - VARIABLE DEPTH (0" - 7/8")
- SHOULDER RUMBLE STRIPS
INSIDE SHOULDERS: 8"
OUTSIDE SHOULDERS: 16"

MODEL: Default
 FILE: \\nrcs-pub\planroom\dot\illinois.gov\PROJECTS\DOT\Office\Bldg\1\Projects\12319\CADD\Drawings\12319-sh-rl-br.dgn
 PROJECT: 12319

USER NAME = rostkowskir	DESIGNED - RR	REVISED -
DRAWN - RR	REVISED -	
PLOT SCALE = 100,0000' / in.	CHECKED - KS	REVISED -
PLOT DATE = 3/19/2019	DATE - 1/31/2019	REVISED -

**STATE OF ILLINOIS
DEPARTMENT OF TRANSPORTATION**

**ROADWAY AND PAVEMENT MARKING PLAN
US RTE 41 (SKOKIE HIGHWAY); FERDALE ST TO IL RTE 21**

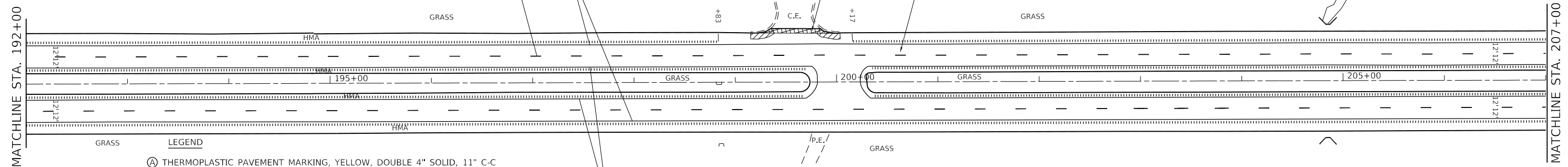
SCALE: 1"=50' SHEET 3 OF 4 SHEETS STA. - TO STA. -

F.A.P. RTE. 346	SECTION 2019-008-I	COUNTY LAKE	TOTAL SHEETS 22	SHEET NO. 11
CONTRACT NO. 62H81				
ILLINOIS FED. AID PROJECT				



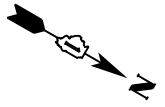
U.S. ROUTE 41 (SKOKIE HIGHWAY)

RAPID SETTING POLYMER MODIFIED EMULSION
ULTRA THIN HOT-MIX ASPHALT SURFACE COURSE, MIX F, TYPE C, 90 LBS/SQYD

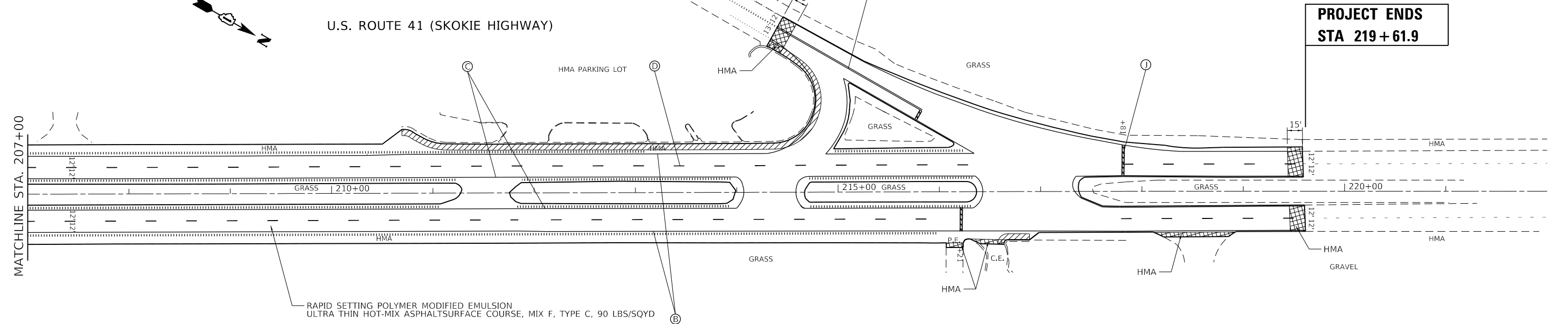


- LEGEND**
- (A) THERMOPLASTIC PAVEMENT MARKING, YELLOW, DOUBLE 4" SOLID, 11" C-C
 - (B) THERMOPLASTIC PAVEMENT MARKING, WHITE, 4" SOLID
 - (C) THERMOPLASTIC PAVEMENT MARKING, YELLOW, 4" SOLID
 - (D) THERMOPLASTIC PAVEMENT MARKING, WHITE, 4" DASHED, 10' DASH 30' SKIP
 - (E) THERMOPLASTIC PAVEMENT MARKING, WHITE, 6" SOLID
 - (F) THERMOPLASTIC PAVEMENT MARKING, WHITE, 6" DASHED, 2' DASH 6' SKIP
 - (G) THERMOPLASTIC PAVEMENT MARKING, WHITE, 8" SOLID
 - (H) THERMOPLASTIC PAVEMENT MARKING, WHITE, 12" SOLID
 - (I) THERMOPLASTIC PAVEMENT MARKING, YELLOW, 12" SOLID
 - (J) THERMOPLASTIC PAVEMENT MARKING, WHITE, 24" SOLID
 - (K) THERMOPLASTIC PAVEMENT MARKING, LETTERS AND SYMBOLS

- SURFACE REMOVAL - BUTT JOINT OF TYPE SPECIFIED. WIDTH OF 4.5' UNLESS OTHERWISE SPECIFIED
- HMA SURFACE REMOVAL - VARIABLE DEPTH (0" - 7/8")
- SHOULDER RUMBLE STRIPS
INSIDE SHOULDERS: 8"
OUTSIDE SHOULDERS: 16"



U.S. ROUTE 41 (SKOKIE HIGHWAY)



**PROJECT ENDS
STA 219 + 61.9**

RAPID SETTING POLYMER MODIFIED EMULSION
ULTRA THIN HOT-MIX ASPHALT SURFACE COURSE, MIX F, TYPE C, 90 LBS/SQYD

MODEL: Default
 FILE: \\nrcs\pub\baronm.dwg
 PROJECT: 112319\RoadData\Design\112319-sh-01-bn.dwg
 USER: baronm.dwg

USER NAME = rostkawski	DESIGNED - RR	REVISED -
DRAWN - RR	REVISIONS -	
PLOT SCALE = 100,0000' / in.	CHECKED - KS	REVISIONS -
PLOT DATE = 3/19/2019	DATE - 1/31/2019	REVISIONS -

**STATE OF ILLINOIS
DEPARTMENT OF TRANSPORTATION**

**ROADWAY AND PAVEMENT MARKING PLAN
US RTE 41 (SKOKIE HIGHWAY); FERDALE ST TO IL RTE 21**

SCALE: 1"=50' SHEET 4 OF 4 SHEETS STA. - TO STA. -

F.A.P. RTE.	SECTION	COUNTY	TOTAL SHEETS	SHEET NO.
346	2019-008-I	LAKE	22	12
CONTRACT NO. 62H81				
ILLINOIS FED. AID PROJECT				

SIDEWALK AND TRAFFIC SCHEDULE OF QUANTITIES

LOCATION			20200100	21101615	25200110	42001300	42400200	44000600	42400800	Z0004562	85000200	89502376
MAIN ROAD	CROSS ROAD	CORNER	EARTH EXCAVATION (CUYD)	TOPSOIL FURNISH AND PLACE, 4" (SQ YD)	SODDING, SALT TOLERANT (SQYD)	PROTECTIVE COAT (SQYD)	PORTLAND CEMENT CONCRETE SIDEWALK 5 INCH (SQFT)	SIDEWALK REMOVAL (SQFT)	DETECTABLE WARNINGS (SQFT)	COMBINATION CONCRETE CURB AND GUTTER REMOVAL AND REPLACEMENT (FT)	MAINTENANCE OF EXISTING TRAFFIC SIGNAL INSTALLATION (EA)	REBUILD EXISTING HANDHOLE (EA)
		TOTALS	2	11	11	21	166	153	10	10	2	6
US RTE 41	DELANY ROAD	-	-	-	-	-	-	-	-	-	1	2
US RTE 41	ST PAUL AVENUE	NW	2	11	11	21	166	153	10	10	-	-
US RTE 41	IL RTE 21	-	-	-	-	-	-	-	-	-	1	4

MODEL: Default
FILE: h:\mhc\p\uploadroom\dat\illinois.gov\PWIDOT\Documents\DOT_Offices\Dir\trc_1\Projects\112319\CaddData\Design\112319-sh-detailed.dgn

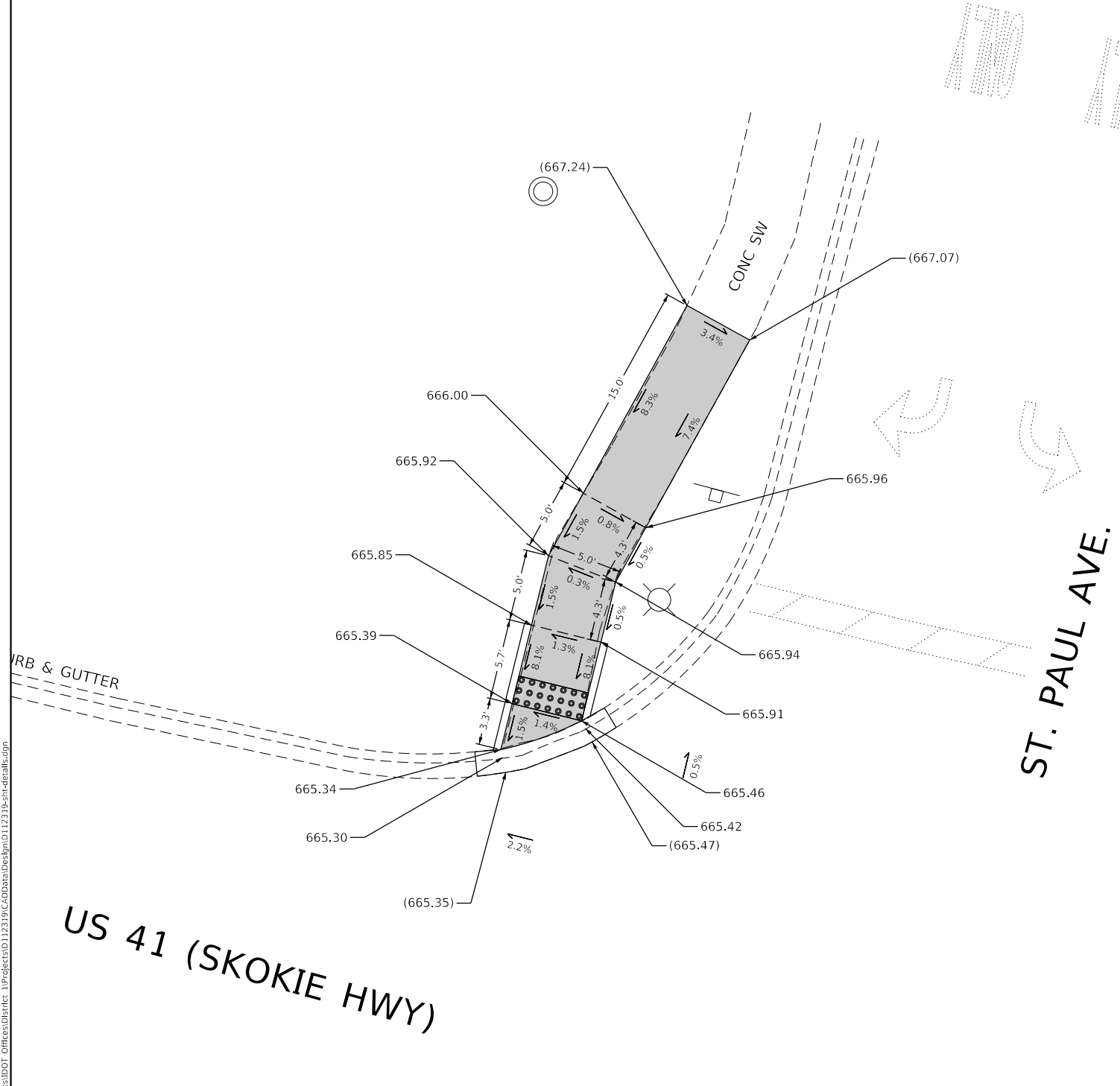
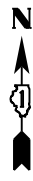
USER NAME = rostkowski	DESIGNED - RR	REVISED -
	DRAWN - RR	REVISED -
PLOT SCALE = 10.0000 ' / in.	CHECKED - KS	REVISED -
PLOT DATE = 3/19/2019	DATE - 1/31/2019	REVISED -

**STATE OF ILLINOIS
DEPARTMENT OF TRANSPORTATION**

SIDEWALK AND TRAFFIC SCHEDULE OF QUANTITIES			
US RTE 41 (SKOKIE HIGHWAY); FERDALE ST TO IL RTE 21			
SCALE: NONE	SHEET 1	OF 1 SHEETS	STA. - TO STA. -

#,A,P# RTE.	SECTION	COUNTY	TOTAL SHEETS	SHEET NO.
346	2019-008-I	LAKE	22	12A
CONTRACT NO. 62H81			ILLINOIS FED. AID PROJECT	

NOTE:
GUTTER FLAG SLOPE IS 5% UNLESS SHOWN OTHERWISE



LEGEND

xx.xx'

EXISTING LENGTH

====

PROPOSED SIDE CURB

()

EXISTING ELEVATION/SLOPE



PROPOSED SIDEWALK



DETECTABLE WARNINGS



SIDEWALK REMOVAL
REPLACE W/TOPSOIL & SOD

REFERENCE BENCH MARK ELEV 671.667

BENCHMARK: TOP SPINDLE OF FIRE HYDRANT

LOCATION: NW CORNER OF US 41 AND ST PAUL AVE,
AROUND 100 FT NE OF US 41

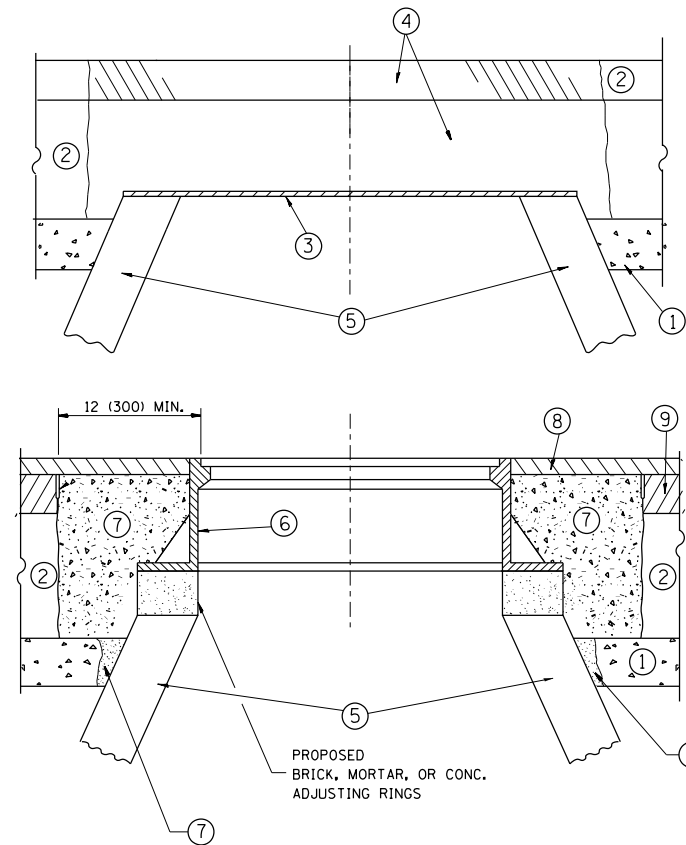
STATE OF ILLINOIS
DEPARTMENT OF TRANSPORTATION

ADA SIDEWALK DETAILS
US RTE 41 (SKOKIE HIGHWAY); FERDALE ST TO IL RTE 21

SCALE: 1"=5' SHEET 1 OF 1 SHEETS STA. - TO STA. -

#,A,P# RTE.	SECTION	COUNTY	TOTAL SHEETS	SHEET NO.
346	2019-008-I	LAKE	22	13
CONTRACT NO. 62H81				
ILLINOIS FED. AID PROJECT				

MODEL: Default
FILE: \\harc... \public\harc... \data\illinois\pwr\DOT\Documents\DOT_Offices\Dir\trc_1\Projects\112319\CADD\Drawings\112319_sht-details.dgn



CONSTRUCTION PROCEDURES

STAGE 1 (BEFORE PAVEMENT MILLING)

- A) REMOVE A MINIMUM OF 12 (300) OF THE PAVEMENT FROM AROUND THE STRUCTURE.
- B) REMOVE THE EXISTING FRAME AND LID FROM THE STRUCTURE.
- C) COVER THE STRUCTURE OPENING WITH A 36 (900) DIAMETER METAL PLATE.
- D) BACKFILL WITH CRUSHED STONE AND A MINIMUM 1/2 (40) THICK HMA SURFACE MIX APPROVED BY THE ENGINEER.

STAGE 2 (AFTER PAVEMENT MILLING)

- A) REMOVE THE HMA SURFACE MIX AND CRUSHED STONE.
- B) INSTALL THE FRAME AND LID; ADJUST THE FRAME TO ITS FINAL SURFACE ELEVATION.
- C) THE SURROUNDING SPACE SHALL BE FILLED WITH CLASS PP-1* CONCRETE TO THE ELEVATION OF THE SURFACE OF THE EXISTING BASE COURSE OR THE BINDER COURSE.

* UNLESS OTHERWISE SPECIFIED IN THE PLANS.

THE PROCEDURE EXPLAINED ABOVE SHALL CONFORM TO THE APPLICABLE PORTIONS OF SECTIONS 353, 406, 602, AND 603 OF THE STANDARD SPECIFICATIONS EXCEPT THAT "THE CONTRACTOR SHALL ADJUST THE STRUCTURES TO THE FINISHED PAVEMENT ELEVATION NO MORE THAN 5 CALENDAR DAYS PRIOR TO PLACEMENT OF THE FINAL LIFT OF SURFACE UNLESS APPROVED BY THE ENGINEER."

LEGEND

- ① SUB-BASE GRANULAR MATERIAL
- ② EXISTING PAVEMENT
- ③ 36 (900) DIAMETER METAL PLATE
- ④ PROPOSED CRUSHED STONE AND HMA SURFACE MIX
- ⑤ EXISTING STRUCTURE
- ⑥ FRAME AND LID (SEE NOTES)
- ⑦ CLASS PP-1* CONCRETE
- ⑧ PROPOSED HMA SURFACE COURSE
- ⑨ PROPOSED HMA BINDER COURSE

LOCATION OF STRUCTURES:

THE CONTRACTOR WILL BE REQUIRED TO KEEP A RECORD OF THE LOCATIONS OF THE BURIED STRUCTURES ACCORDING TO THE STATION AND DISTANCE LEFT OR RIGHT OF THE CENTERLINE OF PAVEMENT. UPON COMPLETION OF THE WORK, THE CONTRACTOR WILL DELIVER THE RECORD TO THE ENGINEER.

BASIS OF PAYMENT:

REMOVING FRAMES AND LIDS ON DRAINAGE AND UTILITY STRUCTURES IN THE PAVEMENT PRIOR TO MILLING, AND ADJUSTING TO FINAL GRADE PRIOR TO PLACING THE SURFACE COURSE, WILL BE PAID FOR AT THE CONTRACT UNIT PRICE EACH FOR "FRAMES AND LIDS TO BE ADJUSTED (SPECIAL)."

THIS WORK WILL NOT BE PAID FOR WHEN DRAINAGE AND UTILITY STRUCTURES ARE SPECIFIED FOR PAYMENT AS STRUCTURE RECONSTRUCTION.

NEW FRAMES AND LIDS, WHEN SPECIFIED, WILL BE PAID FOR SEPARATELY.

NOTES:

EXISTING BROKEN FRAMES AND LIDS SHALL BE REMOVED AND DISPOSED OF BY THE CONTRACTOR AND SHALL BE REPLACED AS DIRECTED BY THE ENGINEER. REPLACEMENT FRAMES AND LIDS WILL BE PAID FOR IN ACCORDANCE WITH ARTICLE 109.04 OF THE STANDARD SPECIFICATIONS UNLESS A SEPARATE PAY ITEM HAS BEEN PROVIDED.

IF THE EXISTING LIDS ARE OPEN, THE FRAME WILL BE ADJUSTED TO THE ELEVATION OF THE MILLED PAVEMENT SURFACE PRIOR TO THE MILLING OPERATION. THE FRAME WILL NOT BE REMOVED AND COVERED BY THE METAL PLATE.

CITY OF CHICAGO CASTINGS ARE THE PROPERTY OF THE CITY AND THE CONTRACTOR SHALL NOTIFY THE CITY FOR REMOVAL AND DISPOSITION OF THE CASTINGS.

THE METAL PLATE USED TO COVER THE STRUCTURE SHALL REMAIN THE PROPERTY OF THE CONTRACTOR.

WHEN STRUCTURES ARE TO BE ADJUSTED OR RECONSTRUCTED, THE LOWERING AND RAISING OF THE FRAMES AND LIDS WILL NOT BE PAID FOR SEPARATELY BUT WILL BE INCLUDED IN THE COST OF THE CORRESPONDING PAY ITEM.

DETAILS FOR FRAMES AND LIDS ADJUSTMENT WITH MILLING

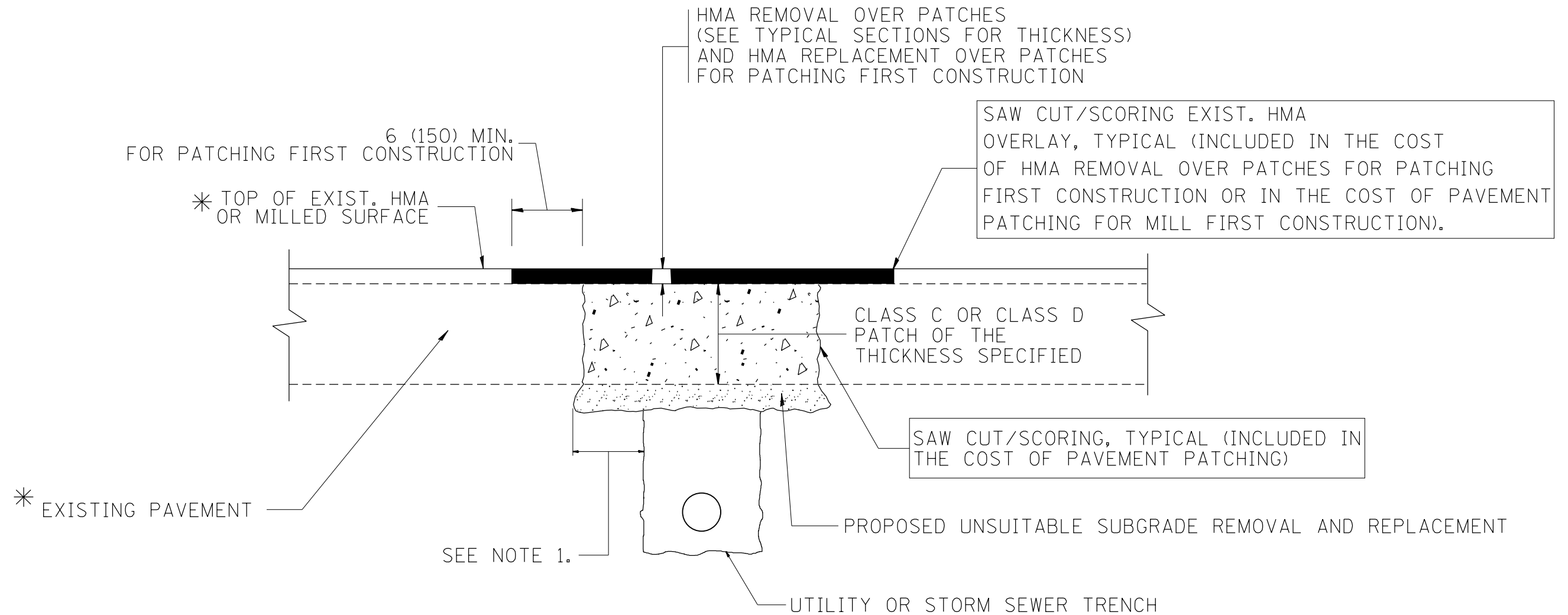
ALL DIMENSIONS ARE IN INCHES (MILLIMETERS) UNLESS OTHERWISE SHOWN

FILE NAME =	USER NAME = rostkowski	DESIGNED - R. SHAH	REVISED - R. WIEDEMAN 05-14-04
pw:\planroom.dot.illinois.gov\PWIDOT\Documents\IDOT Offices\District 1\Projects\011231\DRAWING\Design\DistStd.dgn			REVISED - R. BORO 01-01-07
	PLOT SCALE = 100.0000' / 1in.	CHECKED -	REVISED - R. BORO 03-09-11
	PLOT DATE = 3/19/2019	DATE - 10-25-94	REVISED - R. BORO 12-06-11

**STATE OF ILLINOIS
DEPARTMENT OF TRANSPORTATION**

DETAILS FOR FRAMES AND LIDS ADJUSTMENT WITH MILLING			
SCALE: NONE	SHEET NO. 1 OF 1 SHEETS	STA.	TO STA.

F.A. RTE.	SECTION	COUNTY	TOTAL SHEETS	SHEET NO.
346	2019-008-I	LAKE	22	13A
BD600-03 (BD-8)		CONTRACT NO. 62H81		
FED. ROAD DIST. NO. 1 ILLINOIS FED. AID PROJECT				



* SEE TYPICAL SECTIONS FOR THICKNESS AND MATERIALS

NOTES:

1. THE WIDTH OF THE FULL DEPTH PATCH OVER A TRENCH SHALL BE 12 (300) WIDER ON EACH SIDE OF THE TRENCH.
2. FOR METHOD OF MEASUREMENT AND BASIS OF PAYMENT, SEE RECURRING SPECIAL PROVISION "PATCHING WITH HOT-MIX ASPHALT OVERLAY REMOVAL".

SEQUENCE OF CONSTRUCTION (PATCHING FIRST)

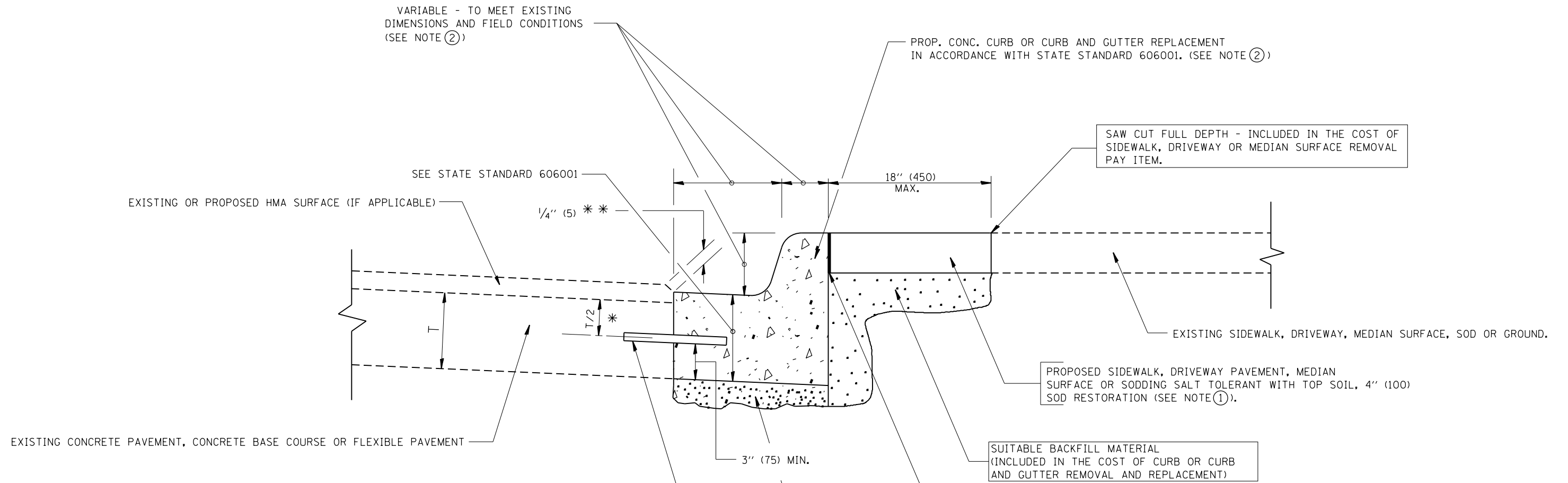
1. REMOVE THE EXISTING HMA MATERIAL OVER THE AREA TO BE PATCHED.
2. REMOVE AND REPLACE WITH CLASS C OR D PATCH.
3. REPLACE HMA MATERIAL OVER THE AREA TO BE PATCHED.

SEQUENCE OF CONSTRUCTION (MILLING FIRST)

1. MILL HMA FIRST IF THERE IS AT LEAST 4 1/2 INCHES OR MORE OF HMA MATERIAL ON TOP OF THE EXISTING PAVEMENT OR IF THE PAVEMENT IS FULL DEPTH HMA. A MINIMUM OF 2 INCHES OF HMA MATERIAL SHALL BE IN PLACE AFTER MILLING.
2. REMOVE AND REPLACE WITH FULL DEPTH CLASS D PATCHES TO TOP OF MILLED SURFACE.

ALL DIMENSIONS ARE IN INCHES (MILLIMETERS) UNLESS OTHERWISE SHOWN.

FILE NAME =	USER NAME = rostkowski	DESIGNED - R. SHAH	REVISED - A. ABBAS 04-27-98	STATE OF ILLINOIS DEPARTMENT OF TRANSPORTATION	PAVEMENT PATCHING FOR HMA SURFACED PAVEMENT			F.A.P. RTE.	SECTION	COUNTY	TOTAL SHEETS	SHEET NO.
pw\11\084EBIDINTEG.illinois.gov\PIWIDOT\Documents\DOT Offices\District 1\Projects\US 41\Drawings\Design\DistStd.dgn	PLOT SCALE = 100.0000' / 1in.	CHECKED -	REVISED - R. BORO 01-01-07					346	2019-008-I	LAKE	22	14
	PLOT DATE = 2/6/2019	DATE - 10-25-94	REVISED - R. BORO 09-04-07		BD400-04 (BD-22)		CONTRACT NO. 62H81					
			REVISED - K. ENG 10-27-08		SCALE: NONE	SHEET NO. 1 OF 1 SHEETS	STA.	TO STA.	FED. ROAD DIST. NO. 1 ILLINOIS FED. AID PROJECT			



- * 3" (75) MINIMUM FROM TOP AND BOTTOM OF THE CONCRETE PAVEMENT OR BASE COURSE.
 - ** IF THE FINAL SURFACE OF THE PAVEMENT IS CONCRETE, THE GUTTER IS TO BE FLUSH WITH THE PAVEMENT.
- NOTE: ① SIDEWALK, DRIVEWAY PAVEMENT OR MEDIAN SURFACE SHALL BE SIMILAR TO THE MATERIAL BEING REMOVED AND WILL BE PAID FOR SEPARATELY.
- SODDING, SALT TOLERANT AND TOP SOIL, FURNISH AND PLACE 4" WILL BE PAID FOR SEPARATELY.
- ② FERTILIZER FOR THE PLACEMENT OF THE SOD IS NOT REQUIRED
 - ③ CURB OR CURB AND GUTTER REPLACEMENT SHALL MATCH THE SHAPE OF THE EXISTING CURB OR CURB AND GUTTER UNLESS OTHERWISE SPECIFIED.
 - ④ FOR CURB OR CURB AND GUTTER REMOVAL AND REPLACEMENT ADJACENT TO FLEXIBLE PAVEMENT DELETE EPOXY COATED TIE BARS.
 - ⑤ LONGITUDINAL BARS, IF ENCOUNTERED IN THE EXISTING CURB OR CURB AND GUTTER, ARE NOT TO BE REPLACED. CUTTING AND REMOVING LONGITUDINAL BARS SHALL BE INCLUDED IN THE COST OF CURB OR CURB AND GUTTER REMOVAL AND REPLACEMENT.
 - ⑥ THE COST OF HMA SURFACE REMOVAL IN THE EXISTING GUTTER FLAG SHALL BE INCLUDED IN THE COST OF THE CURB AND GUTTER REMOVAL AND REPLACEMENT.
 - ⑦ THE REMOVAL AND REPLACEMENT OF THE EXISTING CURB OR CURB AND GUTTER SHALL BE DONE IN ACCORDANCE WITH THE APPLICABLE PORTIONS OF SECTION 440 AND 606 OF THE STANDARD SPECIFICATIONS.
 - ⑧ THE LOCATIONS OF REMOVAL AND REPLACEMENT OF EXISTING CURB OR CURB AND GUTTER SHALL BE DETERMINED BY THE RESIDENT ENGINEER AT THE TIME OF CONSTRUCTION.

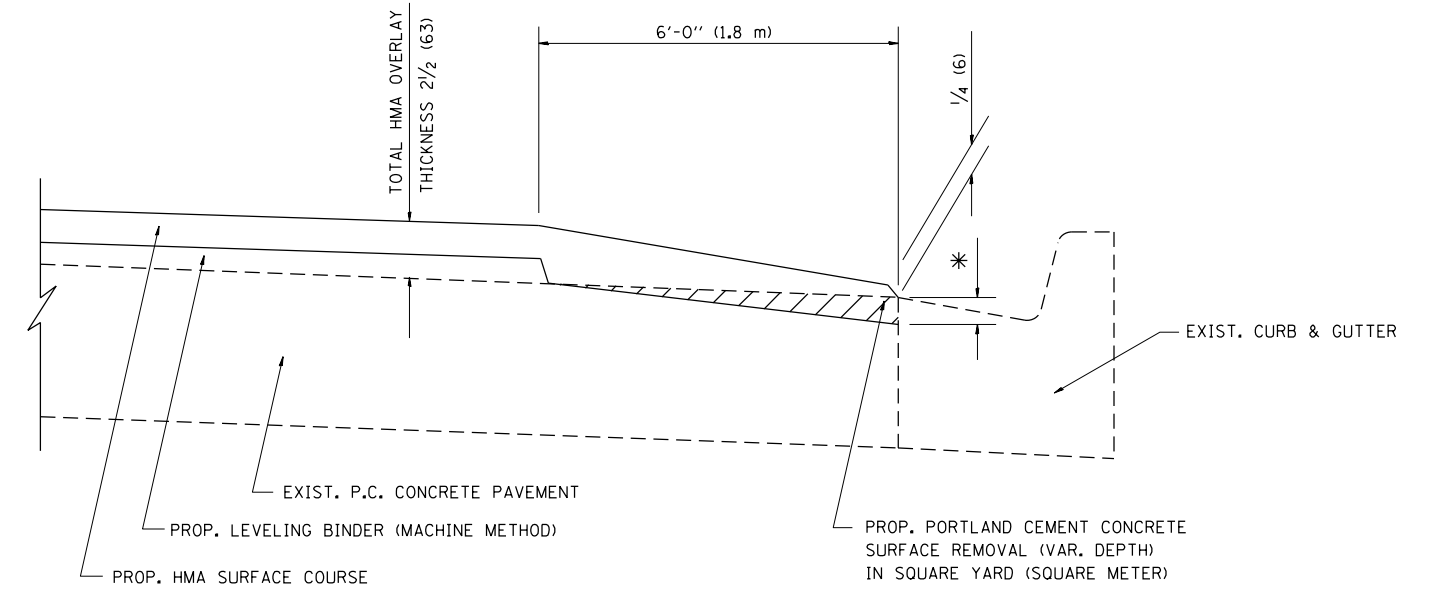
- PROPOSED 3/4" (20) PREFORMED EXPANSION JOINT AT CONCRETE SIDEWALKS, DRIVEWAYS, AND MEDIANS. (INCLUDED IN THE COST OF CURB OR CURB AND GUTTER REMOVAL AND REPLACEMENT.)
- UNSUITABLE SUB-BASE MATERIAL TO BE REMOVED, IF DIRECTED BY THE ENGINEER, SHALL BE REPLACED WITH EITHER SUB-BASE GRANULAR MATERIAL, TYPE B OR ADDITIONAL THICKNESS OF CONCRETE.
- REMOVAL AND REPLACEMENT 4" (100) OR LESS IS INCLUDED IN THE COST OF CURB OR CURB AND GUTTER REMOVAL AND REPLACEMENT.
- REMOVAL AND REPLACEMENT IN EXCESS OF 4" (100) WILL BE PAID FOR IN ACCORDANCE WITH ARTICLE 109.04 OF THE STANDARD SPECIFICATIONS.
- PROPOSED #6 (20) EPOXY COATED TIE BARS 24" (600) LONG AT 24" (600) CENTERS WILL NOT BE PAID FOR SEPARATELY. DELETE EPOXY COATED TIE BARS IF EXISTING TIE BARS ARE USABLE AS DETERMINED BY THE ENGINEER. (SEE NOTE ③).

BASIS OF PAYMENT:
 THIS WORK WILL BE PAID FOR AT THE CONTRACT UNIT PRICE PER FOOT (METER) FOR "CURB REMOVAL AND REPLACEMENT" OR "COMBINATION CONCRETE CURB AND GUTTER REMOVAL AND REPLACEMENT".

CURB OR CURB AND GUTTER REMOVAL AND REPLACEMENT

ALL DIMENSIONS ARE IN INCHES (MILLIMETERS) UNLESS OTHERWISE SHOWN.

FILE NAME =	USER NAME = rostkowski	DESIGNED - A. HOUSEH	REVISED - R. SHAH 10-03-96	STATE OF ILLINOIS DEPARTMENT OF TRANSPORTATION	CURB OR CURB AND GUTTER REMOVAL AND REPLACEMENT	F.A.P. RTE.	SECTION	COUNTY	TOTAL SHEETS	SHEET NO.	
			REVISED - A. ABBAS 03-21-97			346	2019-008-I	LAKE	22	15	
			REVISED - M. GOMEZ 01-22-01			BD600-06 (BD-24)		CONTRACT NO. 62H81			
			REVISED - R. BORO 12-15-09			FED. ROAD DIST. NO. 1 ILLINOIS FED. AID PROJECT					
PLOT SCALE = 100.0000' / in.		CHECKED -	DATE - 03-11-94	SCALE: NONE	SHEET NO. 1 OF 1 SHEETS	STA.	TO STA.				



HMA TAPER AT
EDGE OF P.C.C PAVEMENT

HMA SURFACE	THICKNESS	LEVELING BINDER THICKNESS	* MILLING AT GUTTER FLAG
C OR D	1 1/2 (38)	1 (25)	1/4 (33)
E	1 3/4 (44)	3/4 (19)	1/2 (38)

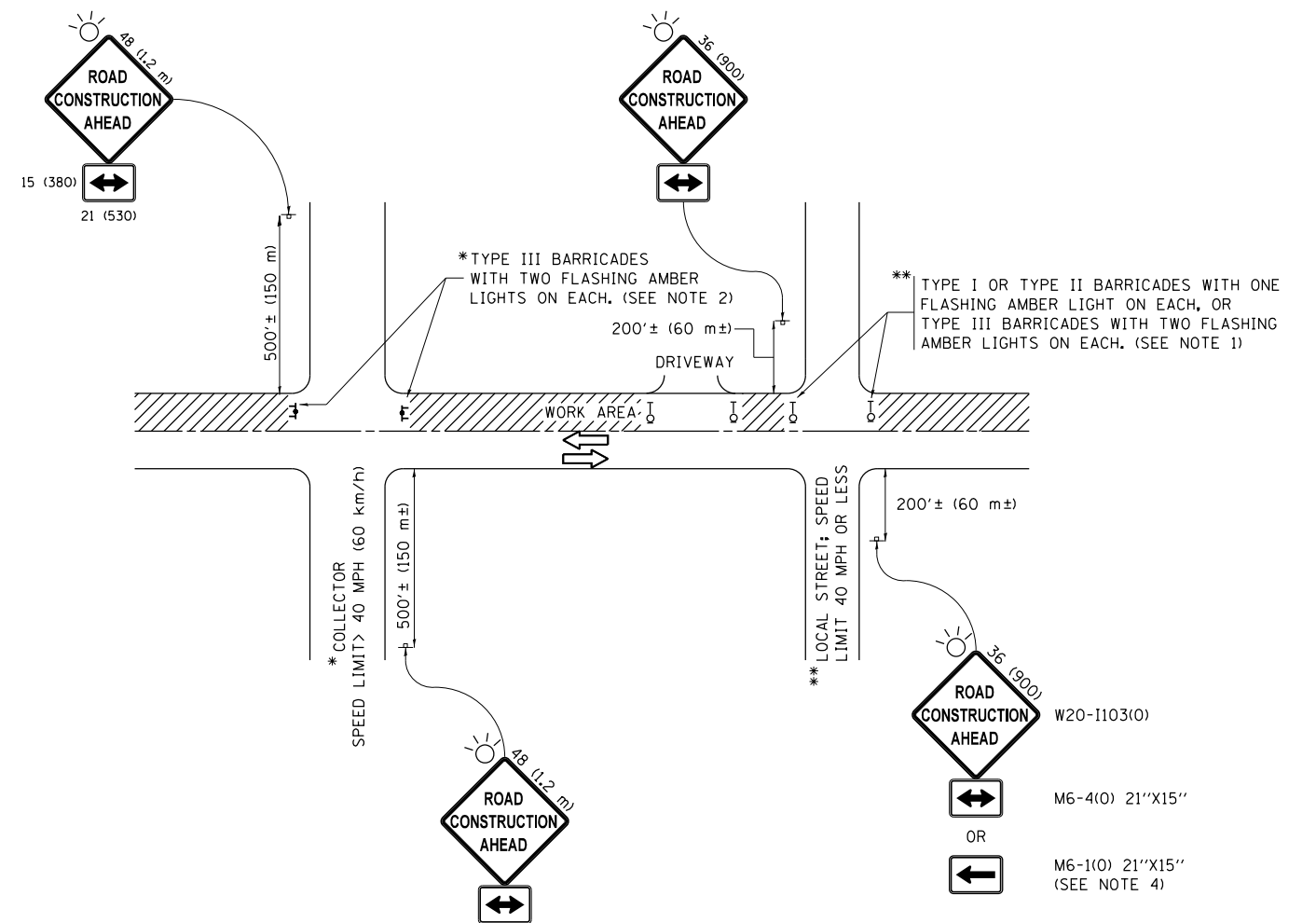
ALL DIMENSIONS ARE IN INCHES (MILLIMETERS) UNLESS OTHERWISE SHOWN.

FILE NAME =	USER NAME = rostkowski	DESIGNED - R. SHAH	REVISED - A. ABBAS 05-05-9
p:\planroom.dot.illinois.gov\PIDOT\Documents\IDOT Offices\District 1\Projects\011231\DRAWING\Design\Dist1.dgn			REVISED - E. GOMEZ 12-21-00
Default	PLOT SCALE = 100.0000' / in.	CHECKED - A. ABBAS	REVISED - R. BORO 01-01-07
	PLOT DATE = 3/19/2019	DATE - 09-10-94	REVISED - JP CHANG 07-08-16

STATE OF ILLINOIS
DEPARTMENT OF TRANSPORTATION

HMA TAPER AT EDGE OF P.C.C PAVEMENT			
SCALE: NONE	SHEET 1	OF 1 SHEETS	STA. TO STA.

F.A. RTE.	SECTION	COUNTY	TOTAL SHEETS	SHEET NO.
346	2019-008-I	LAKE	22	16
BD400-06 (BD33)		CONTRACT NO. 62H81		
ILLINOIS FED. AID PROJECT				



NOTES:

1. SIDE ROAD WITH A SPEED LIMIT OF 40 MPH (60 km/h) OR LESS AS SHOWN ON THE DRAWING AND AS DIRECTED BY THE ENGINEER:
 - a) ONE "ROAD CONSTRUCTION AHEAD" SIGN 36 x 36 (900x900) WITH A FLASHER MOUNTED ON IT APPROXIMATELY 200' (60 m) IN ADVANCE OF THE MAIN ROUTE.
 - b) THE CLOSED PORTION OF THE MAIN ROUTE SHALL BE PROTECTED BY BLOCKING WITH TYPE I, TYPE II OR TYPE III BARRICADES, 1/3 OF THE CROSS SECTION OF THE CLOSED PORTION.
2. SIDE ROAD WITH A SPEED LIMIT GREATER THAN 40 MPH (60 km/h) AS SHOWN ON THE DRAWING AND AS DIRECTED BY THE ENGINEER:
 - a) ONE "ROAD CONSTRUCTION AHEAD" SIGN 48 x 48 (1.2 m x 1.2 m) WITH A FLASHER MOUNTED ON IT APPROXIMATELY 500' (150 m) IN ADVANCE OF THE MAIN ROUTE.
 - b) THE CLOSED PORTION OF THE MAIN ROUTE SHALL BE PROTECTED BY BLOCKING WITH TYPE III BARRICADES, 1/2 OF THE CROSS SECTION OF THE CLOSED PORTION.
3. CONES MAY BE SUBSTITUTED FOR BARRICADES OR DRUMS AT HALF THE SPACING DURING DAY OPERATIONS. CONES SHALL BE A MINIMUM OF 28 (710) IN HEIGHT.
4. WHEN THE SIDE ROAD LIES BETWEEN THE BEGINNING OF THE MAINLINE SIGNING AND THE WORK ZONE, A SINGLE HEADED ARROW (M6-1) SHALL BE USED IN LIEU OF THE DOUBLE HEADED ARROW (M6-4).
5. WHEN WORK IS BEING PERFORMED ON A SIDE ROAD OR DRIVEWAY, FOLLOW THE APPLICABLE STANDARD(S). THE DIRECTIONAL ARROW (M6-1 OR M6-4) SHALL BE COVERED OR REMOVED WHEN NO LONGER CONSISTENT WITH THE TRAFFIC CONTROL SET-UP.
6. ADVANCE WARNING SIGNS ARE TO BE OMITTED ON DRIVEWAYS UNLESS OTHERWISE SPECIFIED IN THE PLANS OR BY THE ENGINEER.
7. THE TRAFFIC CONTROL AND PROTECTION FOR SIDE ROADS, INTERSECTIONS, AND DRIVEWAYS SHALL BE INCLUDED IN THE COST OF SPECIFIED TRAFFIC CONTROL STANDARDS OR ITEMS.

All dimensions are in inches (millimeters) unless otherwise shown.

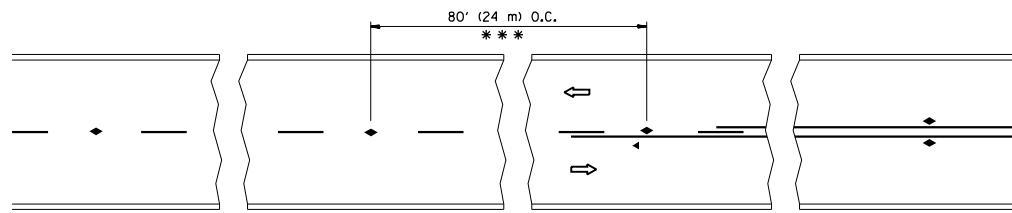
FILE NAME =	USER NAME = rostkowski	DESIGNED - L.H.A.	REVISED - A. HOUSEH 10-15-96
p:\11\084EBIDINTEG\illinois.gov\PIWIDOT\Documents\IDOT Offices\District 1\Projects\US 41\Drawings\Design\DistStd.dgn			REVISED - T. RAMMACHER 01-06-00
Default	PLOT SCALE = 100.0000' / in.	CHECKED -	REVISED - A. SCHUETZE 07-01-13
	PLOT DATE = 2/6/2019	DATE - 06-89	REVISED - A. SCHUETZE 09-15-16

**STATE OF ILLINOIS
DEPARTMENT OF TRANSPORTATION**

**TRAFFIC CONTROL AND PROTECTION FOR
SIDE ROADS, INTERSECTIONS, AND DRIVEWAYS**

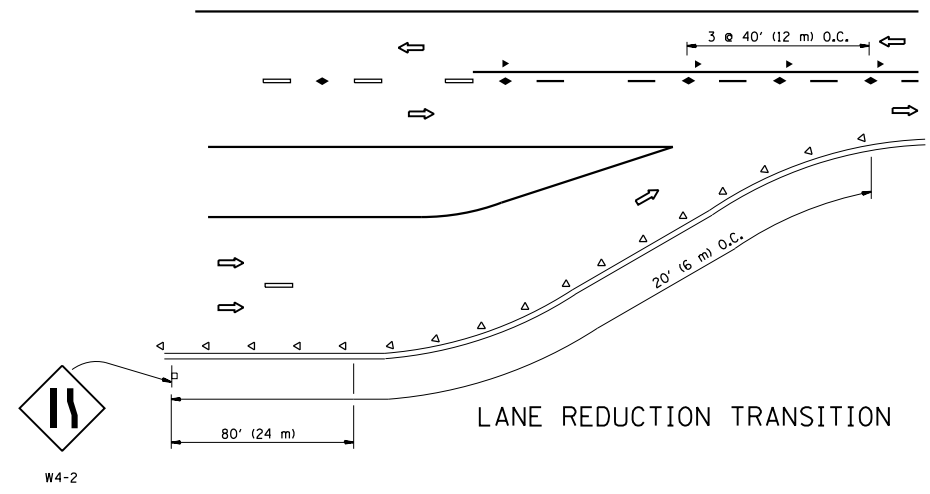
SCALE: NONE SHEET 1 OF 1 SHEETS STA. TO STA.

F.A.P. RTE.	SECTION	COUNTY	TOTAL SHEETS	SHEET NO.
346	2019-008-I	LAKE	22	17
TC-10			CONTRACT NO. 62H81	
ILLINOIS FED. AID PROJECT				

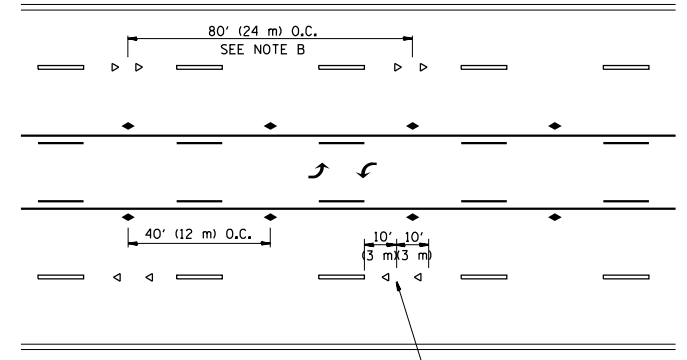


*** REDUCE TO 40' (12 m) O.C. ON CURVES WITH POSTED OR ADVISORY SPEED 45 M.P.H. (70 km/h) OR LESS.

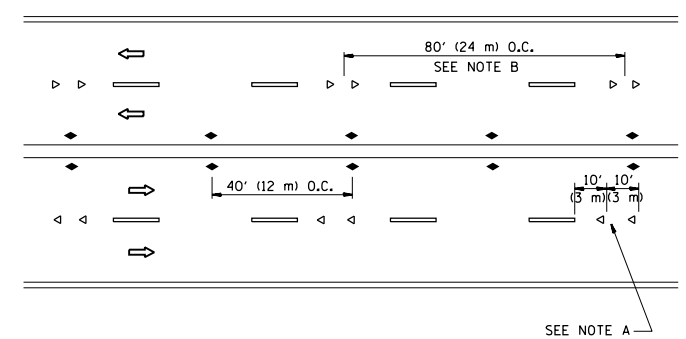
TWO-LANE/TWO-WAY



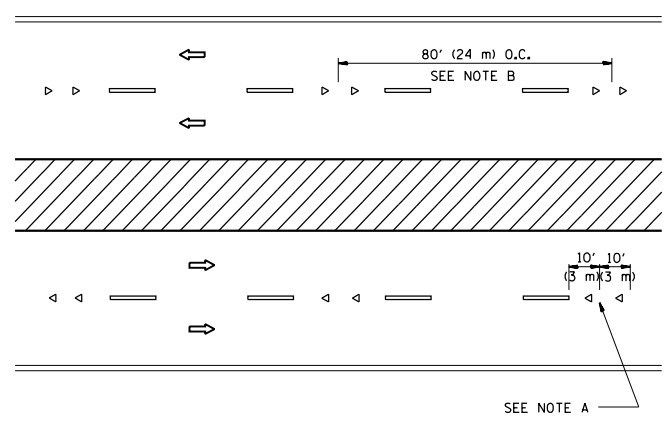
LANE REDUCTION TRANSITION



TWO-WAY LEFT TURN



MULTI-LANE/UNDIVIDED



MULTI-LANE/DIVIDED

GENERAL NOTES

1. MARKERS USED WITH DASHED LINES SHALL BE CENTERED IN THE GAP BETWEEN SEGMENTS.
2. MARKERS USED ADJACENT TO SOLID LINES SHALL BE OFFSET 2 TO 3 (50 TO 75) TOWARD TRAFFIC AS SHOWN.
3. MARKERS THROUGH TANGENTS LESS THAN 500' (150 m) IN LENGTH BETWEEN CURVES SHALL BE INSTALLED AT THE LESSER OF THE TWO CURVE SPACINGS.

SYMBOLS

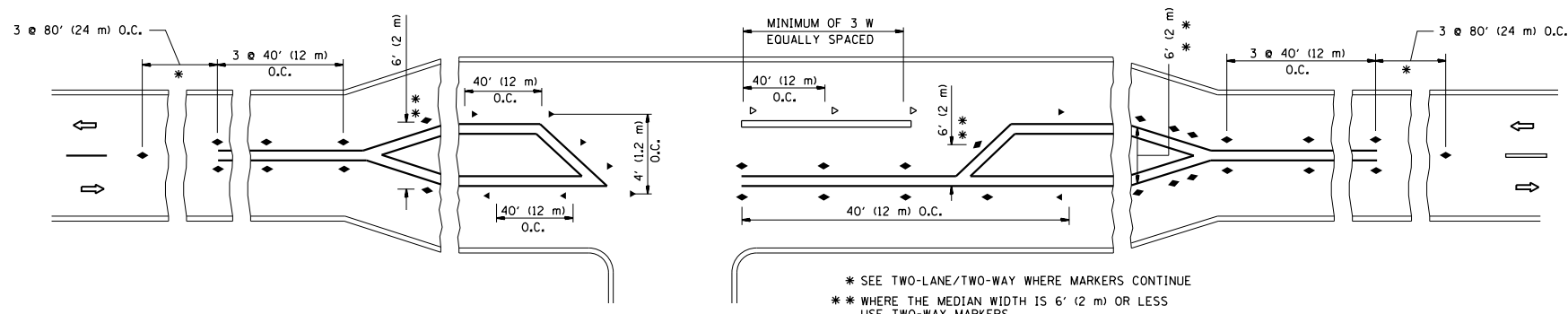
- YELLOW STRIPE
- WHITE STRIPE
- ◀ ONE-WAY AMBER MARKER
- ◁ ONE-WAY CRYSTAL MARKER (W/O)
- ◆ TWO-WAY AMBER MARKER

LANE MARKER NOTES

- A. USE DOUBLE LANE LINE MARKERS SPACED AS SHOWN.
- B. REDUCE TO 40' (12 m) O.C. ON CURVES WHERE ADVISORY SPEEDS ARE 10 M.P.H (20 km/h) LOWER THAN POSTED SPEEDS.

DESIGN NOTES

1. DOUBLE LANE LINE MARKERS SHALL BE USED UNLESS SPECIFIED OTHERWISE.
2. EXCEPT AS SHOWN ON THE LANE REDUCTION TRANSITION AND FREEWAY EXIT RAMP DETAIL, MARKERS ARE NOT TO BE SPECIFIED ON RIGHT EDGE LINES.
3. THE EXACT MARKER LIMITS, SPACING, AND COLOR SHALL BE INCLUDED IN THE PLANS WHEN STANDARD SPECIFICATIONS ARE NOT BEING USED.
4. MARKERS SHOULD NOT BE USED ALONGSIDE CURBS EXCEPT FOR EXTREMELY SHORT SECTIONS OF CURBS WHERE NOT MORE THAN TWO MARKERS WOULD BE INVOLVED.

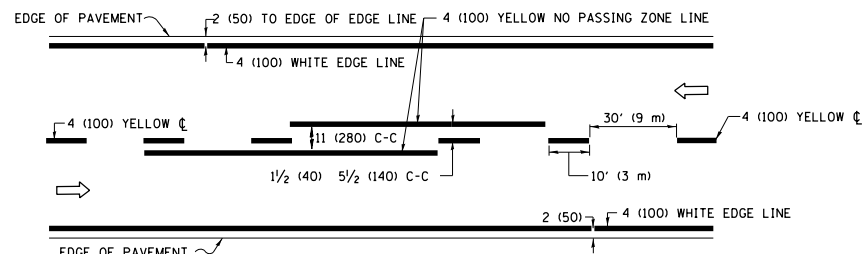


LEFT TURN

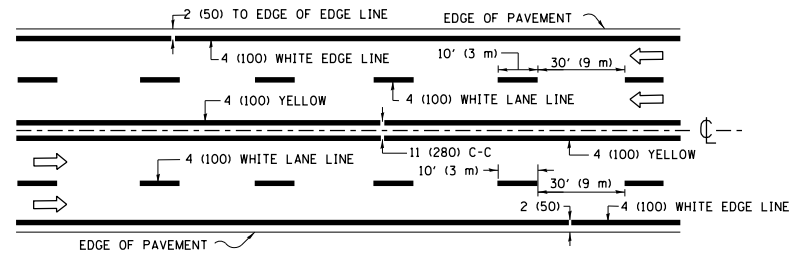
* SEE TWO-LANE/TWO-WAY WHERE MARKERS CONTINUE
 ** WHERE THE MEDIAN WIDTH IS 6' (2 m) OR LESS USE TWO-WAY MARKERS.

All dimensions are in inches (millimeters) unless otherwise shown.

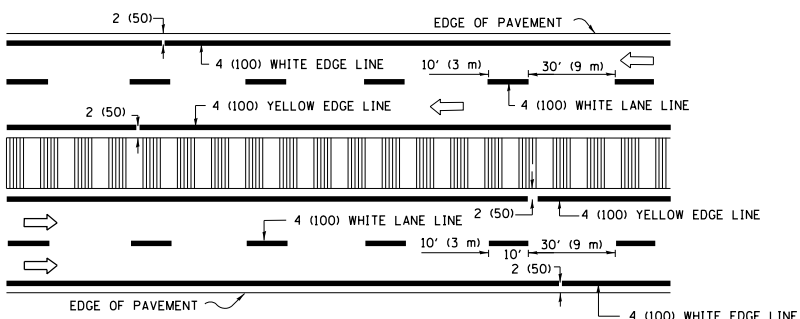
FILE NAME =	USER NAME = rostkowski	DESIGNED -	REVISED - T. RAMMACHER 09-19-94	STATE OF ILLINOIS DEPARTMENT OF TRANSPORTATION	TYPICAL APPLICATIONS			F.A.P. RTE.	SECTION	COUNTY	TOTAL SHEETS	SHEET NO.
pw:\11\084EBIDINTEG.illinois.gov\PIWIDOT\Documents\IDOT Offices\District 1\Projects\US 41\Drawings\Design\DistStd.dgn		CHECKED -	REVISED - T. RAMMACHER 03-12-99		RAISED REFLECTIVE PAVEMENT MARKERS (SNOW-PLOW RESISTANT)			346	2019-008-I	LAKE	22	18
		DATE -	REVISED - T. RAMMACHER 01-06-00		SCALE: NONE	SHEET NO. 1	OF 1 SHEETS	STA.	TO STA.	TC-11		
			REVISED - C. JUCIUS 09-09-09					CONTRACT NO. 62H81			<small>FED. ROAD DIST. NO. 1 ILLINOIS FED. AID PROJECT</small>	



2-LANE ROADWAY

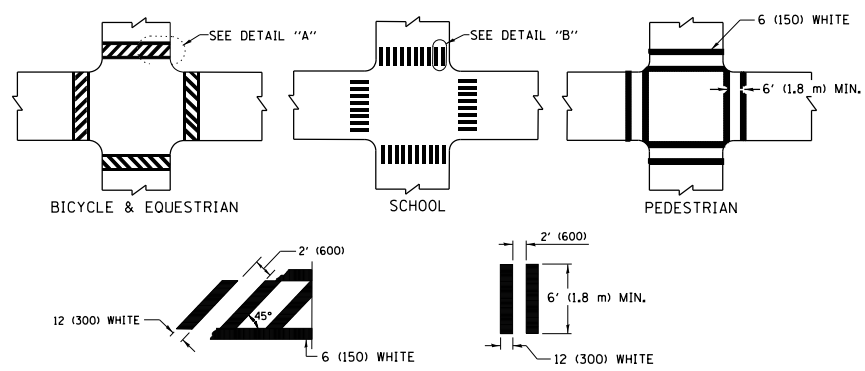


MULTI-LANE UNDIVIDED



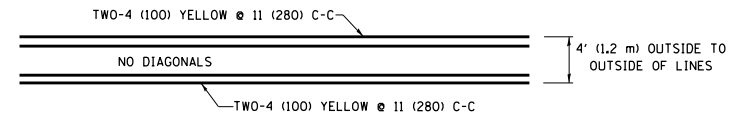
MULTI-LANE DIVIDED WITH MEDIAN

TYPICAL LANE AND EDGE LINE MARKING

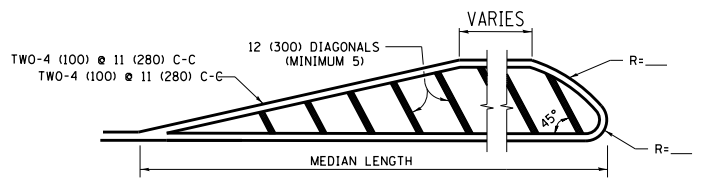


TYPICAL CROSSWALK MARKING

* MARKINGS SHALL BE INSTALLED PARALLEL TO THE CENTERLINE OF THE ROAD WHICH IT CROSSES

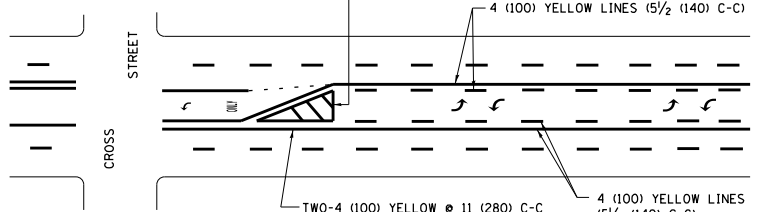


4' (1.2 m) WIDE MEDIANS ONLY



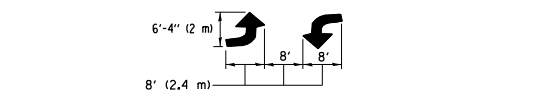
MEDIANS OVER 4' (1.2 m) WIDE

DIAGONAL LINE SPACING: 50' (15 m) C-C (LESS THAN 30MPH (50 km/h))
75' (25 m) C-C 30MPH (50 km/h) TO 45MPH (70 km/h)
150' (45 m) C-C (MORE THAN 45MPH (70 km/h))



MEDIAN WITH TWO-WAY LEFT TURN LANE TYPICAL PAINTED MEDIAN MARKING

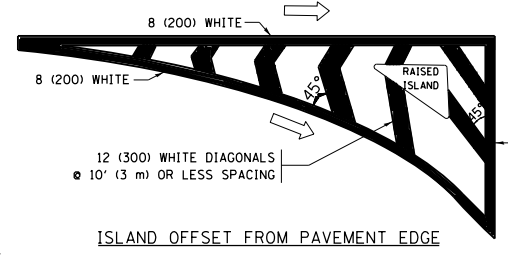
A MINIMUM OF TWO PAIRS OF TURN ARROWS SHALL BE USED, WHITE IN COLOR. ADDITIONAL PAIRS SHALL BE PLACED AT 200' (60 m) TO 300' (90 m) INTERVALS.



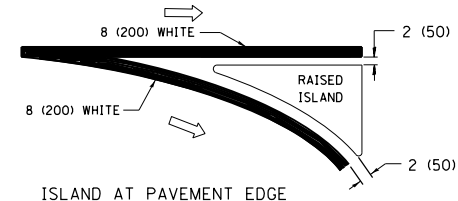
TYPICAL LEFT (OR RIGHT) TURN LANE

TYPICAL TURN LANE MARKING

FULL SIZE LETTERS 8' (2.4 m) AND ARROWS SHALL BE USED.
AREA = 15.6 SQ. FT. (1.5 m²) ONLY AREA = 20.8 SQ. FT. (1.9 m²)
* TURN LANES IN EXCESS OF 400' (120 m) IN LENGTH MAY HAVE AN ADDITIONAL SET OF ARROW - "ONLY" INSTALLED MIDWAY BETWEEN THE OTHER TWO SETS OF ARROW - "ONLY".

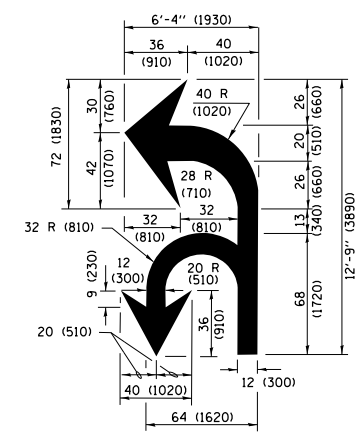


ISLAND OFFSET FROM PAVEMENT EDGE

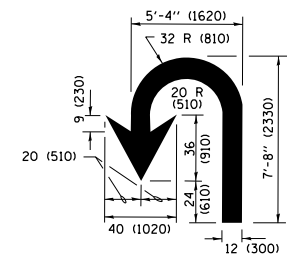


ISLAND AT PAVEMENT EDGE

TYPICAL ISLAND MARKING



COMBINATION LEFT AND U-TURN



U-TURN

LANE REDUCTION TRANSITION

* LANE REDUCTION ARROWS REQUIRED AT SPEEDS OF 45 MPH OR GREATER OR WHEN SPECIFIED IN PLANS.

D(FT)	SPEED LIMIT
345	30
425	35
500	40
580	45
665	50
750	55

TYPE OF MARKING	WIDTH OF LINE	PATTERN	COLOR	SPACING /REMARKS
CENTERLINE ON 2 LANE PAVEMENT	4 (100)	SKIP-DASH	YELLOW	10' (3 m) LINE WITH 30' (9 m) SPACE
CENTERLINE ON MULTI-LANE UNDIVIDED PAVEMENT	2 @ 4 (100)	SOLID	YELLOW	11 (280) C-C
NO PASSING ZONE LINES FOR ONE DIRECTION FOR BOTH DIRECTIONS	4 (100) 2 @ 4 (100)	SOLID SOLID	YELLOW YELLOW	5/2 (140) C-C FROM SKIP-DASH CENTERLINE 11 (280) C-C OMIT SKIP-DASH CENTERLINE BETWEEN
LANE LINES	4 (100) 5 (125) ON FREEWAYS	SKIP-DASH SKIP-DASH	WHITE WHITE	10' (3 m) LINE WITH 30' (9 m) SPACE
DOTTED LINES (EXTENSIONS OF CENTER, LANE OR TURN LANE MARKINGS)	SAME AS LINE BEING EXTENDED	SKIP-DASH	SAME AS LINE BEING EXTENDED	2' (600) LINE WITH 6' (1.8 m) SPACE
EDGE LINES	4 (100)	SOLID	YELLOW-LEFT WHITE-RIGHT	OUTLINE MEDIANS IN YELLOW
TURN LANE MARKINGS	6 (150) LINE; FULL SIZE LETTERS & SYMBOLS (8' (2.4m))	SOLID	WHITE	SEE TYPICAL TURN LANE MARKING DETAIL
TWO WAY LEFT TURN MARKING	2 @ 4 (100) EACH DIRECTION 8' (2.4m) LEFT ARROW	SKIP-DASH AND SOLID IN PAIRS	YELLOW WHITE	10' (3 m) LINE WITH 30' (9 m) SPACE FOR SKIP-DASH; 5/2 (140) C-C BETWEEN SOLID LINE AND SKIP-DASH LINE SEE TYPICAL TWO-WAY LEFT TURN MARKING DETAIL
CROSSWALK LINES (PEDESTRIAN) A. DIAGONALS (BIKE & EQUESTRIAN) B. LONGITUDINAL BARS (SCHOOL)	2 @ 6 (150) 12 (300) @ 45° 12 (300) @ 90°	SOLID SOLID SOLID	WHITE WHITE WHITE	NOT LESS THAN 6' (1.8 m) APART 2' (600) APART SEE TYPICAL CROSSWALK MARKING DETAILS.
STOP LINES	24 (600)	SOLID	WHITE	PLACE 4' (1.2 m) IN ADVANCE OF AND PARALLEL TO CROSSWALK, IF PRESENT, OTHERWISE, PLACE AT DESIRED STOPPING POINT, PARALLEL TO CROSSROAD CENTERLINE, WHERE POSSIBLE.
PAINTED MEDIANS	2 @ 4 (100) WITH 12 (300) DIAGONALS @ 45° NO DIAGONALS USED FOR 4' (1.2 m) WIDE MEDIANS	SOLID	YELLOW; TWO WAY TRAFFIC WHITE; ONE WAY TRAFFIC	11 (280) C-C FOR THE DOUBLE LINE SEE TYPICAL PAINTED MEDIAN MARKING.
GORE MARKING AND CHANNELIZING LINES	8 (200) WITH 12 (300) DIAGONALS @ 45°	SOLID	WHITE	DIAGONALS: 15' (4.5 m) C-C (LESS THAN 30MPH (50 km/h)) 20' (6 m) C-C 30MPH (50 km/h) TO 45MPH (70 km/h) 30' (9 m) C-C (OVER 45MPH (70 km/h))
RAILROAD CROSSING	24 (600) TRANSVERSE LINES; "RR" IS 6' (1.8 m) LETTERS; 16 (400) LINE FOR "X"	SOLID	WHITE	SEE STATE STANDARD 780001 AREA OF: "R"=3.6 SQ. FT. (0.33 m ²) EACH "X"=54.0 SQ. FT. (5.0 m ²)
SHOULDER DIAGONALS (REQUIRED FOR SHOULDERS ≥ 8')	12 (300) @ 45°	SOLID	WHITE - RIGHT YELLOW - LEFT	50' (15 m) C-C (LESS THAN 30MPH (50 km/h)) 75' (25 m) C-C (30 MPH (50 km/h) TO 45MPH (70 km/h)) 150' (45 m) C-C (OVER 45MPH (70 km/h))
U TURN ARROW	SEE DETAIL	SOLID	WHITE	16.3 SF
2 ARROW COMBINATION LEFT AND U TURN	SEE DETAIL	SOLID	WHITE	30.4 SF

FOR FURTHER DETAILS ON PAVEMENT MARKING REFER TO STANDARD SPECIFICATIONS FOR ROAD AND BRIDGE CONSTRUCTION AND STATE STANDARD 780001.

All dimensions are in inches (millimeters) unless otherwise shown.

FILE NAME =	USER NAME = rostkowski	DESIGNED - EVERS	REVISED - C. JUCIUS 09-09-09
pw\1\084EBIDINTEG\illinois.gov\PIWIDOT\Documents\DOT Offices\District 1\Projects\US-41\Drawings\DistStd.dgn		CHECKED -	REVISED - C. JUCIUS 07-01-13
Default	PLOT SCALE = 100.0000' / in.	DATE - 03-19-90	REVISED - C. JUCIUS 12-21-15
	PLOT DATE = 2/6/2019		REVISED - C. JUCIUS 04-12-16

STATE OF ILLINOIS DEPARTMENT OF TRANSPORTATION

DISTRICT ONE TYPICAL PAVEMENT MARKINGS			
SCALE: NONE	SHEET 1	OF 1 SHEETS	STA. TO STA.

F.A.P. RTE.	SECTION	COUNTY	TOTAL SHEETS	SHEET NO.
346	2019-008-I	LAKE	22	19
TC-13		CONTRACT NO. 62H81	ILLINOIS FED. AID PROJECT	

TURN BAY ENTRANCE AT START OF LANE CLOSURE TAPER

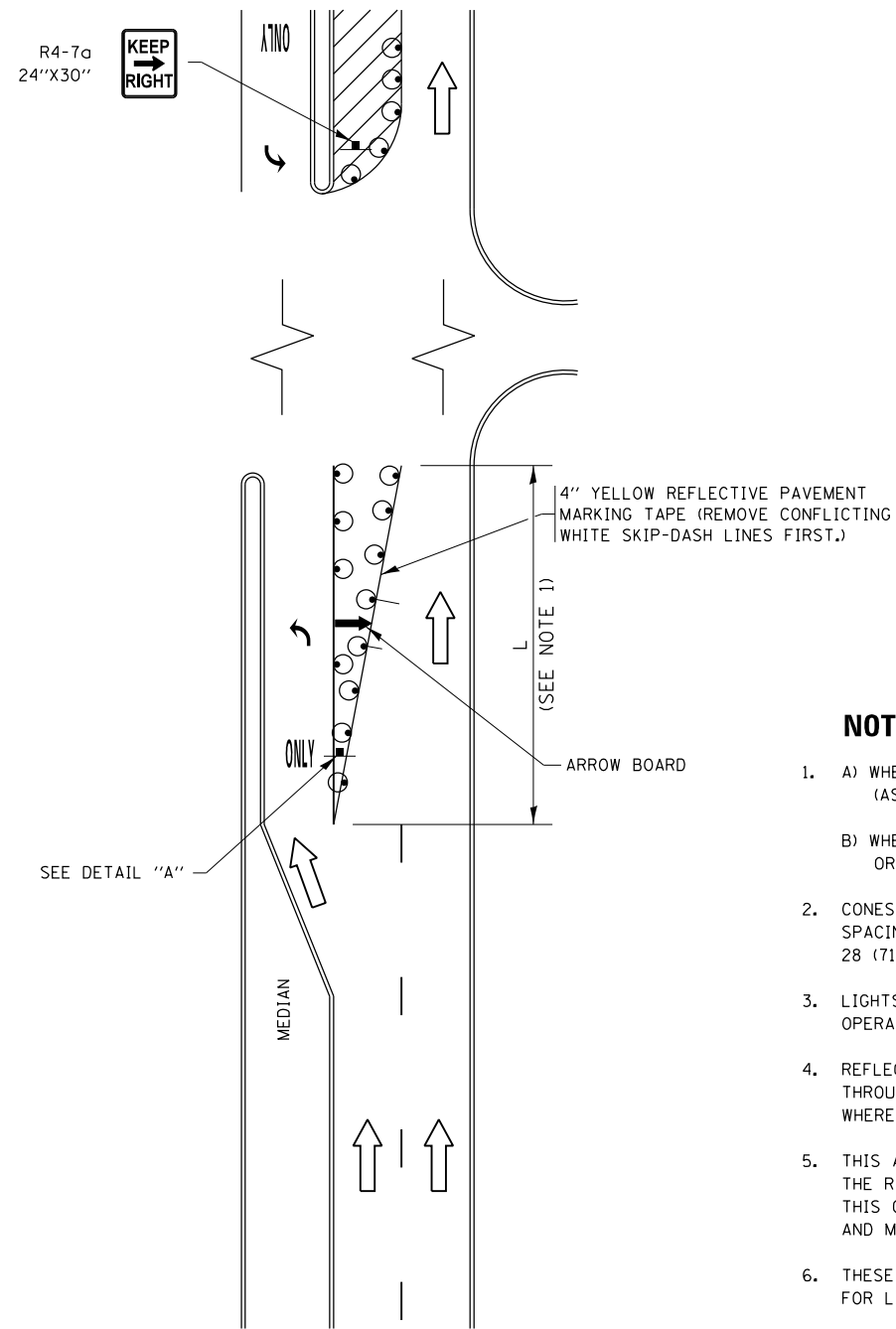
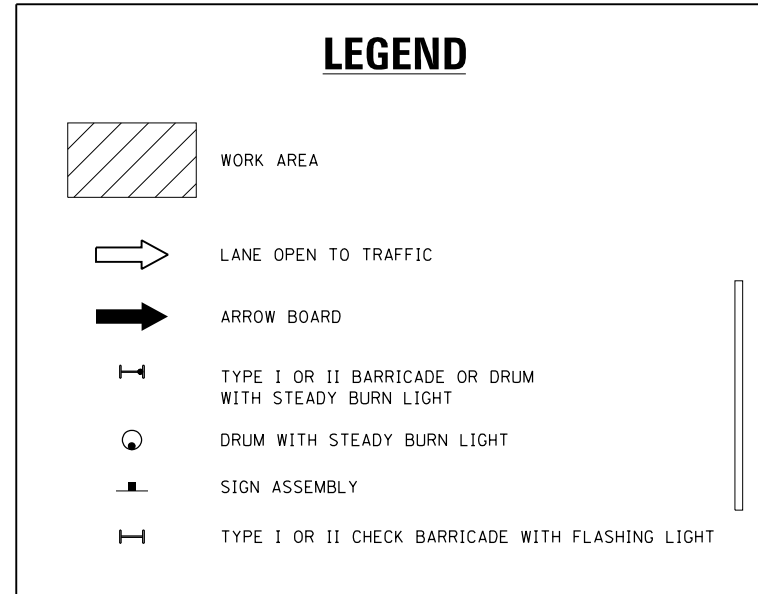


FIGURE 1



NOTES:

1. A) WHEN "L" IS \leq THE STORAGE LENGTH OF THE TURN LANE (AS SHOWN IN FIG. 1), USE FIGURE 1.
B) WHEN "L" IS $>$ THE STORAGE LENGTH OF THE TURN LANE OR THE TURN LANE IS WITHIN THE LANE CLOSURE, USE FIGURE 2.
2. CONES MAY BE SUBSTITUTED FOR BARRICADES OR DRUMS AT HALF THE SPACING DURING DAY OPERATIONS. CONES SHALL BE A MINIMUM OF 28 (710) IN HEIGHT.
3. LIGHTS WILL NOT BE REQUIRED ON BARRICADES OR DRUMS FOR DAY OPERATIONS. ALL LIGHTS SHALL BE MONODIRECTIONAL.
4. REFLECTIVE TEMPORARY PAVEMENT MARKINGS SHALL BE PLACED THROUGHOUT THE BARRICADED AREAS OF EACH TURN BAY AS SHOWN WHERE THE CLOSURE TIME IS GREATER THAN FOURTEEN (14) DAYS.
5. THIS APPLICATION ALSO APPLIES WHEN WORK IS BEING PERFORMED IN THE RIGHT LANE(S) AND THE RIGHT TURN BAY IS TO REMAIN OPEN. UNDER THIS CONDITION, "RIGHT TURN LANE" R3-1100R 24 x 24 (600 x 600) AND M6-2R 21 x 15 (530 x 380) SHALL BE USED.
6. THESE CONTROLS SHALL SUPPLEMENT MAINLINE TRAFFIC CONTROL FOR LANE CLOSURES.
7. THE SIGNS SHALL BE MOUNTED ABOVE THE BARRICADES/DRUMS ON SEPARATE SIGN SUPPORTS THAT MEET NCHRP 350 OR MASH PREQUIREMENTS.
8. TRAFFIC CONTROL AND PROTECTION AT TURN BAYS (TO REMAIN OPEN TO TRAFFIC) SHALL BE INCLUDED IN THE COST OF SPECIFIED TRAFFIC CONTROL STANDARDS OR ITEMS.

TURN BAY ENTRANCE WITHIN A LANE CLOSURE

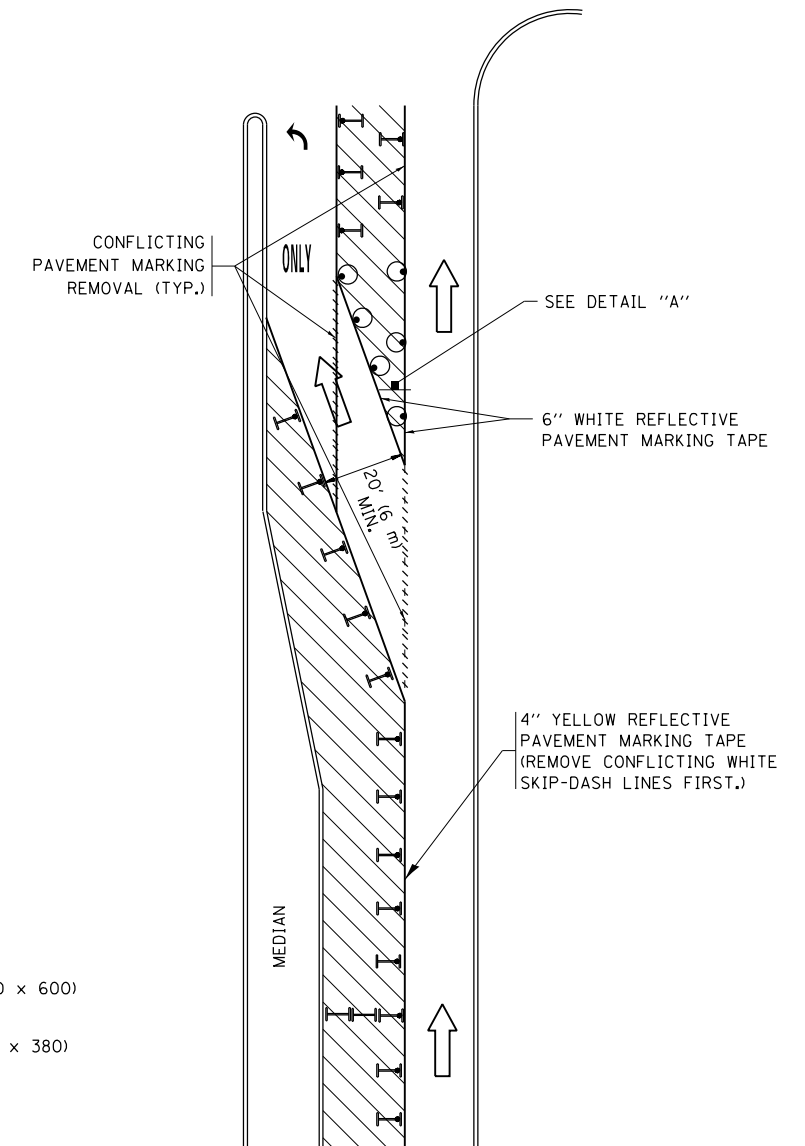
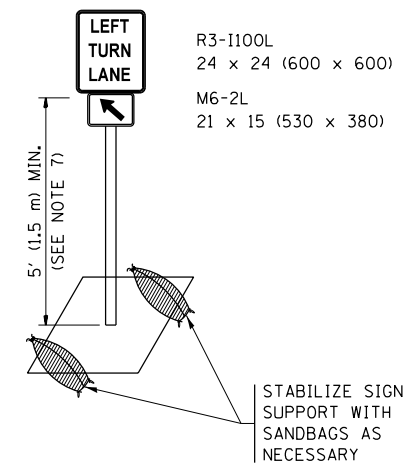


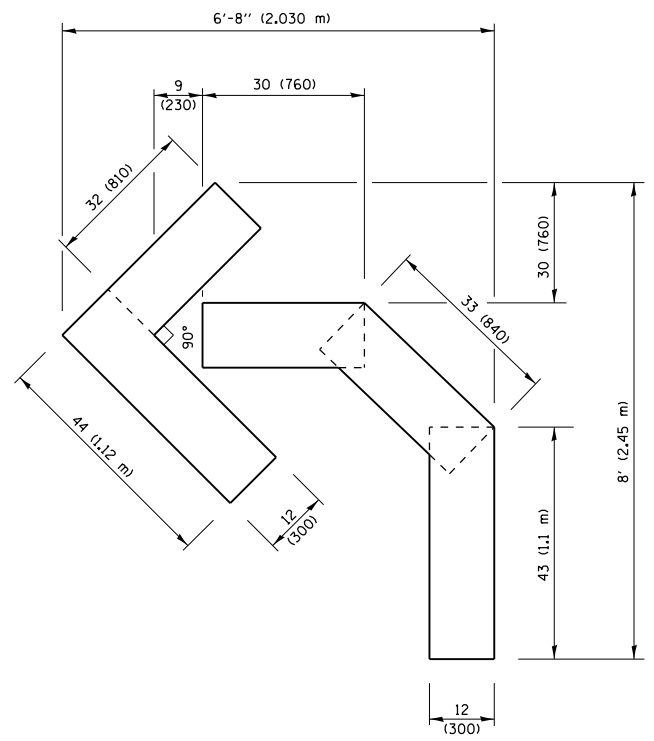
FIGURE 2



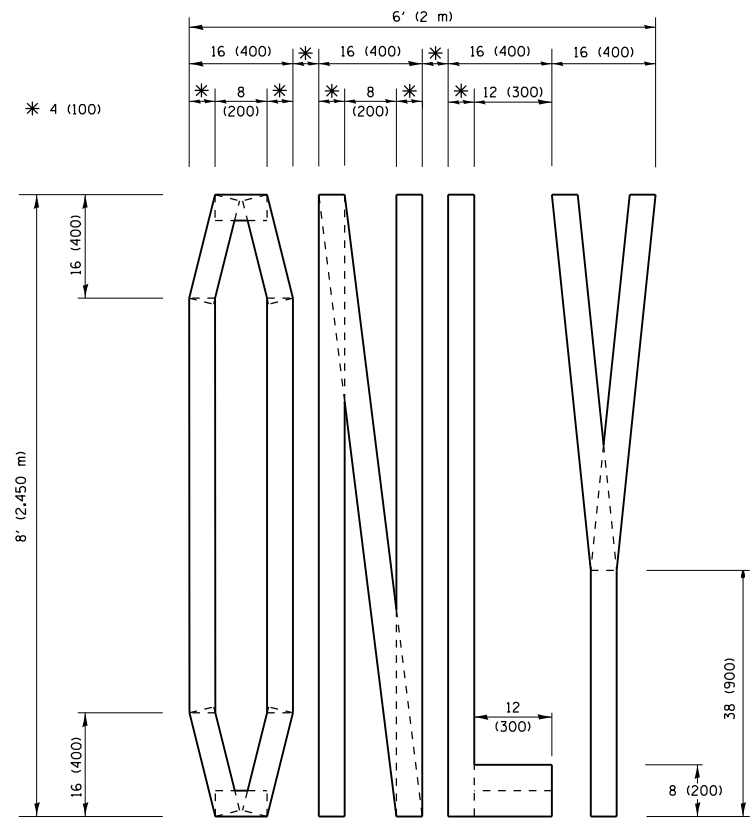
DETAIL A

All dimensions are in inches (millimeters) unless otherwise shown.

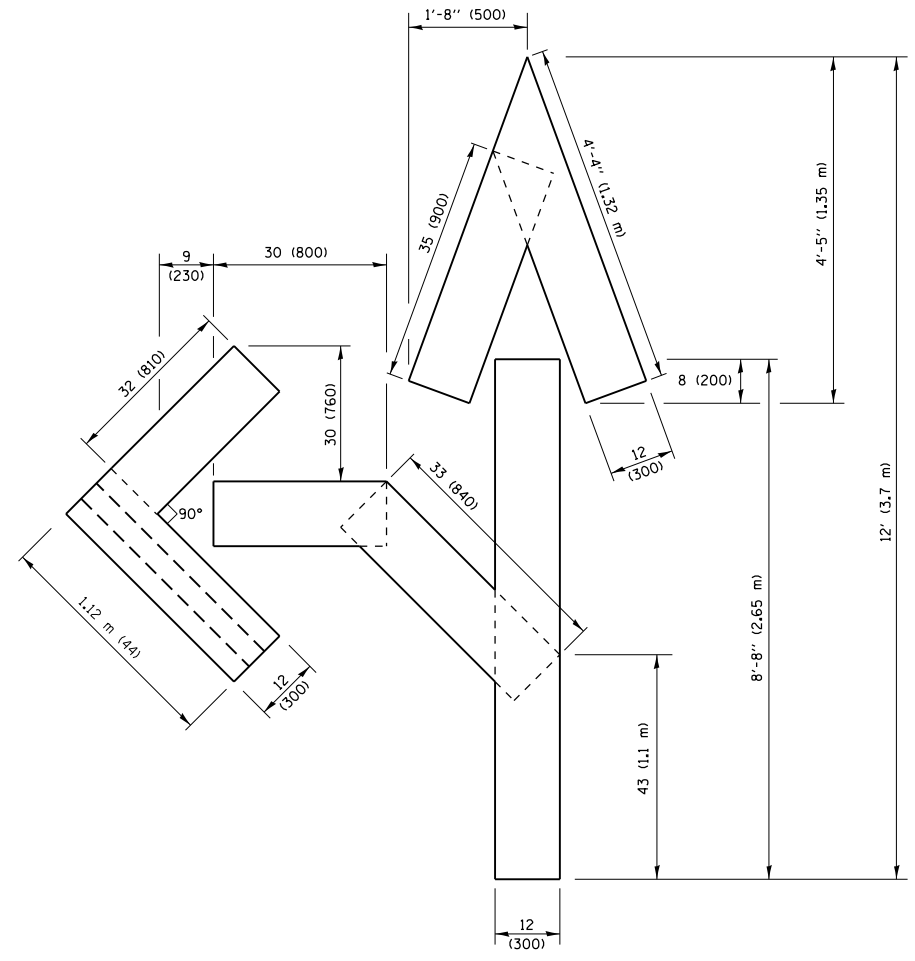
FILE NAME =	USER NAME = rostkowski	REVISED - T. RAMMACHER 09-08-94	REVISED - R. BORO 09-14-09	STATE OF ILLINOIS DEPARTMENT OF TRANSPORTATION	TRAFFIC CONTROL AND PROTECTION AT TURN BAYS (TO REMAIN OPEN TO TRAFFIC)	F.A.P. R.T.E.	SECTION	COUNTY	TOTAL SHEETS	SHEET NO.
pw\11084EBIDINTEG.illinois.gov\PIWIDOT\Documents\IDOT Offices\District 1\Projects\US 41\REVISED Design\02\HOUSEH 11-07-95	REVISED - A. HOUSEH 11-07-95	REVISED - A. SCHUETZE 07-01-13	REVISED - A. SCHUETZE 07-01-13			346	2019-008-I	LAKE	22	20
Default	PLOT SCALE = 100.0000' / in.	REVISED - A. HOUSEH 10-12-96	REVISED - A. SCHUETZE 09-15-16			TC-14		CONTRACT NO. 62H81		
	PLOT DATE = 2/6/2019	REVISED - T. RAMMACHER 01-06-00	REVISED -			ILLINOIS FED. AID PROJECT				



QUANTITY
 4 (100) LINE = 45.5 ft. (13.9 m)
 15.2 sq. ft. (1.41 sq. m)

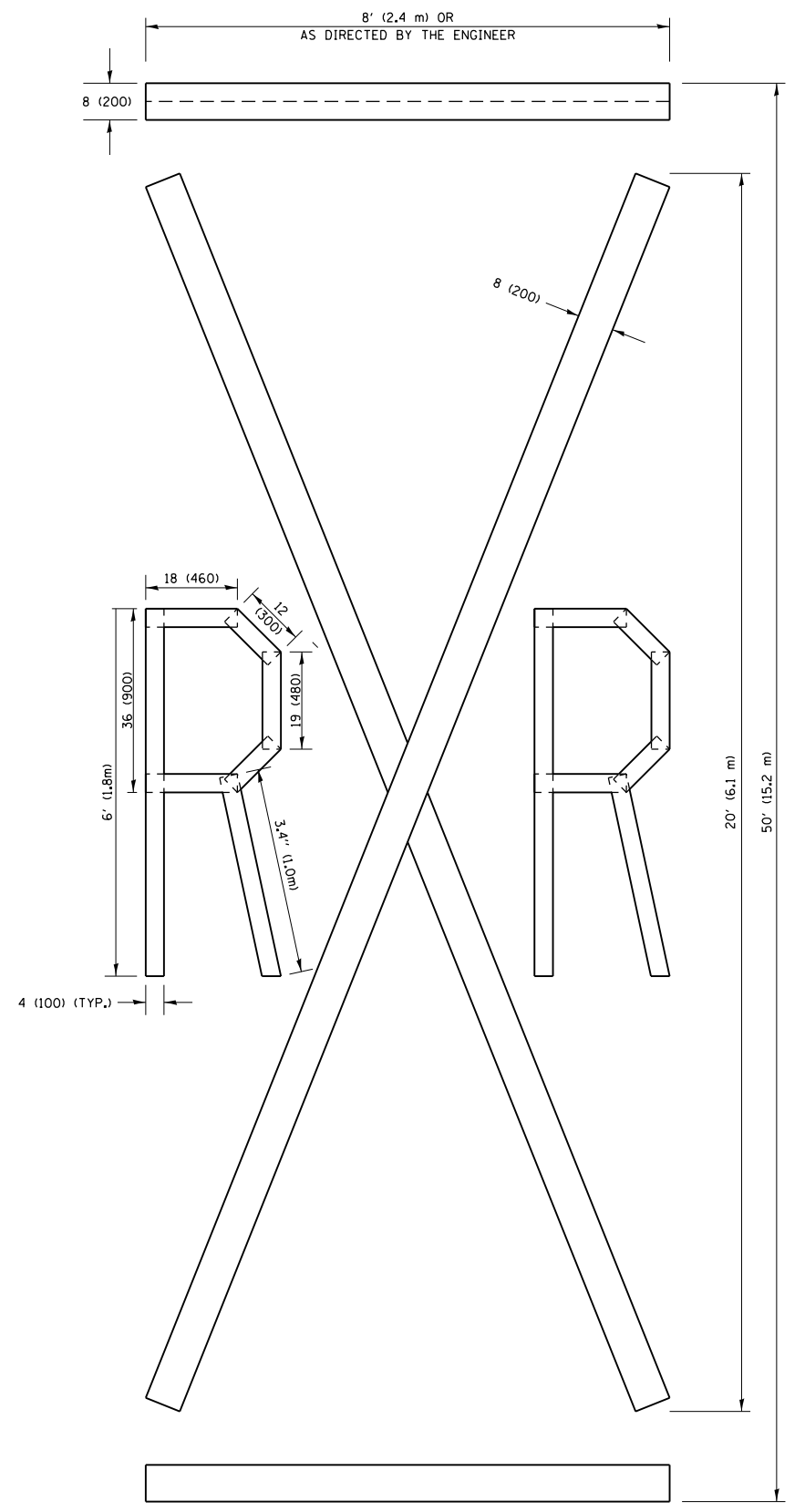


QUANTITY
 4 (100) LINE = 64.1 ft. (19.5 m)
 21.4 sq. ft. (1.99 sq. m)



QUANTITY
 4 (100) LINE = 82.5 ft. (25.1 m)
 27.5 sq. ft. (2.53 sq. m)

NOTE:
 ALL QUANTITIES OF PLACEMENT ARE REPRESENTED IN LINEAR FEET OF 4" LINES TO MATCH THE 4" TEMPORARY TAPE PAY ITEM AND REPRESENTS THE TOTAL QUANTITY OF 4" TAPE REQUIRED.



QUANTITY
 4 (100) LINE = 225.9 ft. (68.9 m)
 75.3 sq. ft. (6.99 sq. m)

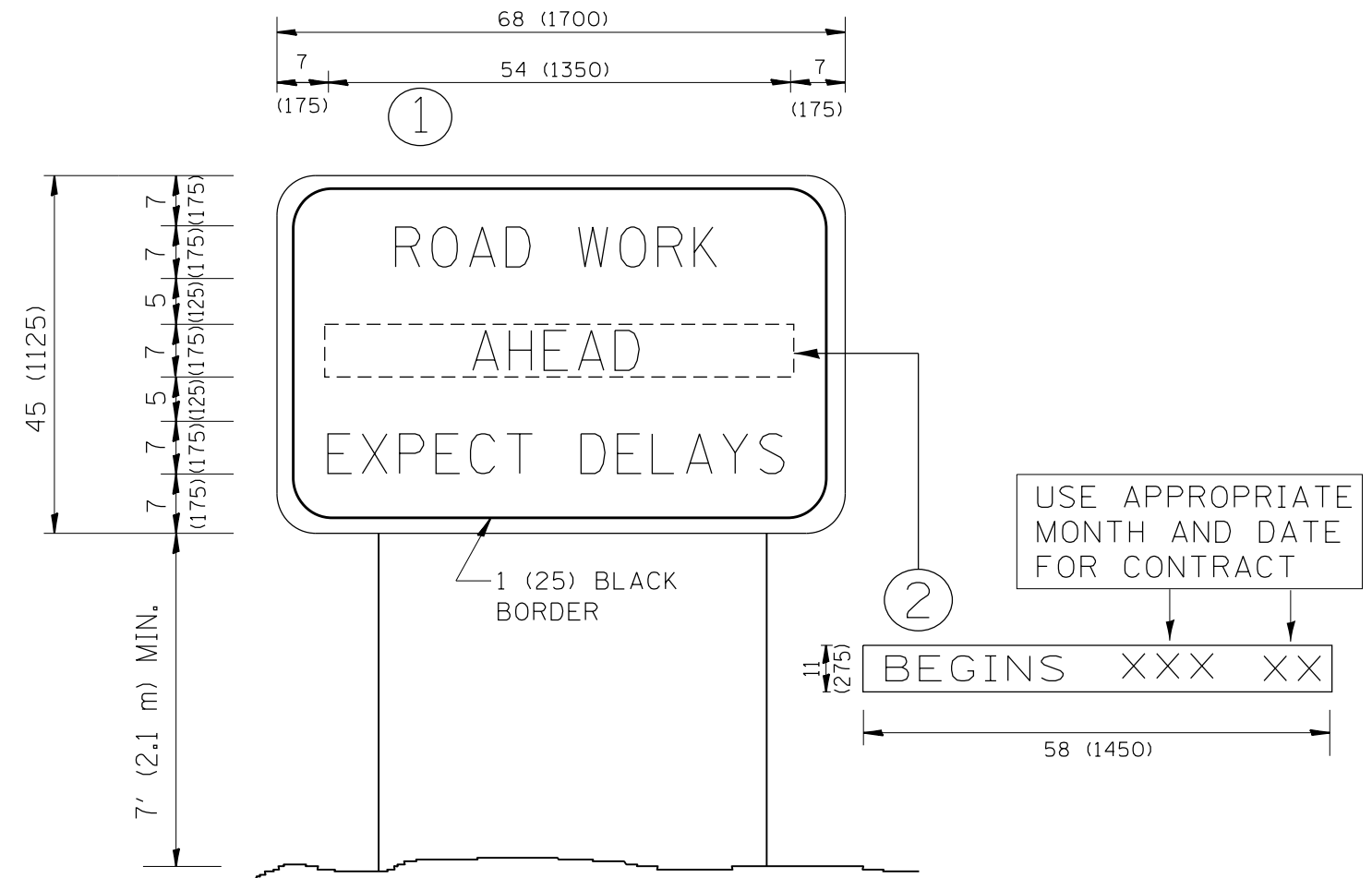
All dimensions are in inches (millimeters) unless otherwise shown.

FILE NAME =	USER NAME = rostkowski	DESIGNED -	REVISED -T. RAMMACHER 03-02-98
p:\11\084EBIDINTEG.illinois.gov\PIWIDOT\Documents\DOT Offices\District 1\Projects\US 41\Drawings\Design\DistStd.dgn		CHECKED -	REVISED -E. GOMEZ 08-28-00
		PLOT SCALE = 100.0000' / in.	REVISED -E. GOMEZ 08-28-00
		PLOT DATE = 2/6/2019	REVISED -A. SCHUETZE 09-15-16

**STATE OF ILLINOIS
 DEPARTMENT OF TRANSPORTATION**

SHORT TERM PAVEMENT MARKING LETTERS AND SYMBOLS			
SCALE: NONE	SHEET NO. 1 OF 1 SHEETS	STA.	TO STA.

F.A.P. RTE.	SECTION	COUNTY	TOTAL SHEETS	SHEET NO.
346	2019-008-I	LAKE	22	21
TC-16		CONTRACT NO. 62H81		
FED. ROAD DIST. NO. 1 ILLINOIS FED. AID PROJECT				

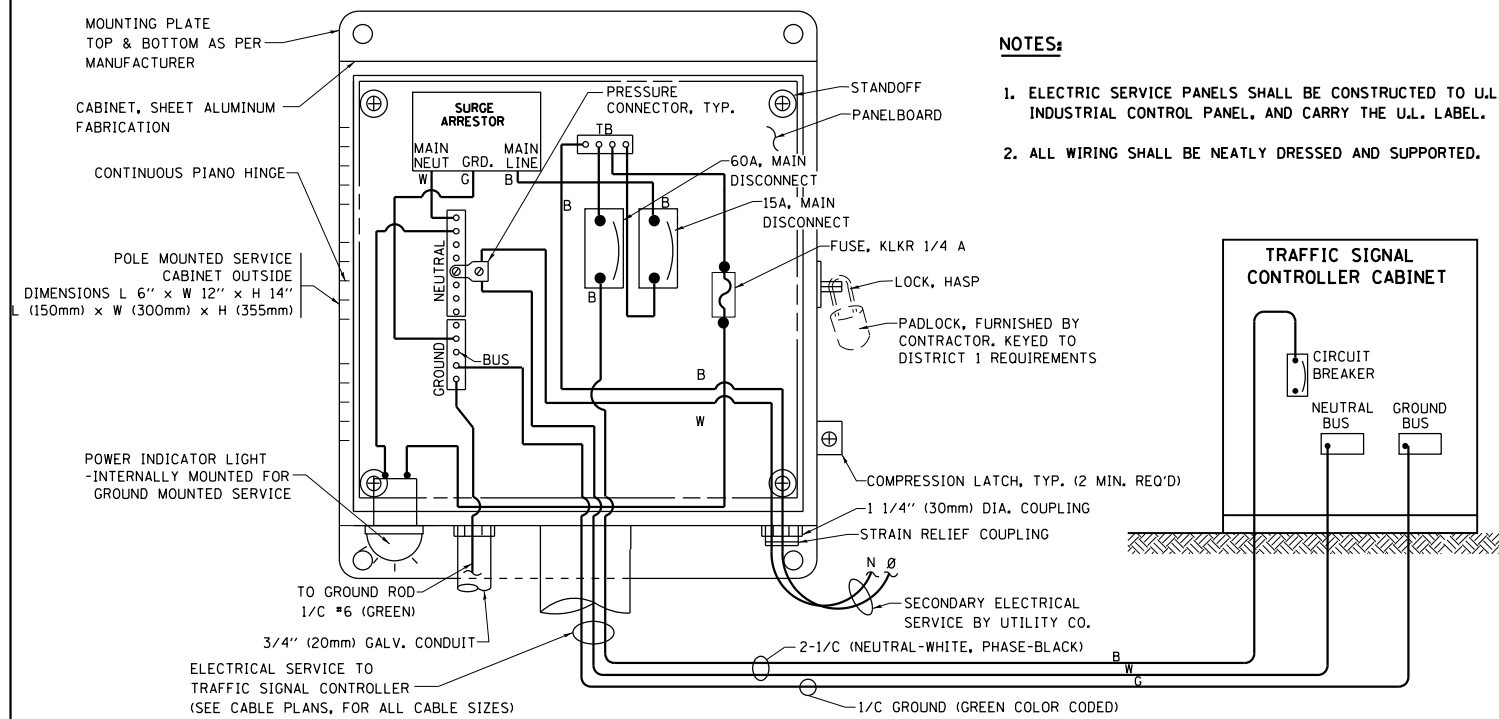


NOTES:

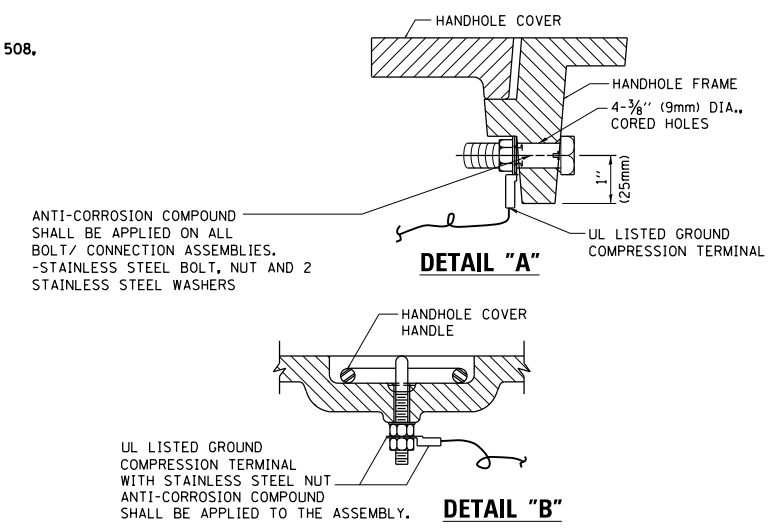
1. USE BLACK LETTERING ON ORANGE BACKGROUND.
2. ERECT SIGNS IN ADVANCE OF THE LOCATION FOR THE "ROAD CONSTRUCTION AHEAD" SIGN AT LOCATIONS AS DIRECTED BY THE ENGINEER.
3. ERECT SIGN ① WITH INSTALLED PANEL ② ONE WEEK PRIOR TO THE START OF CONSTRUCTION.
4. REMOVE PANEL ② SOON AFTER THE START OF CONSTRUCTION.
5. SEE SPECIAL PROVISION FOR "TEMPORARY INFORMATION SIGNING" FOR ADDITIONAL INFORMATION.
6. ONE SIGN ASSEMBLY EQUALS 25.70 SQ. FT. (2.3 SQ. M.)
7. SHALL BE PAID FOR AS TEMPORARY INFORMATION SIGNING.

ALL DIMENSIONS ARE IN INCHES (MILLIMETERS) UNLESS OTHERWISE SHOWN.

FILE NAME =	USER NAME = rostkowski	DESIGNED -	REVISED - R. MIRS 09-15-97	STATE OF ILLINOIS DEPARTMENT OF TRANSPORTATION	ARTERIAL ROAD INFORMATION SIGN	F.A.P. RTE.	SECTION	COUNTY	TOTAL SHEETS	SHEET NO.
pw:\IL\084EBIDINTEG.illinois.gov\PWIDOT\Documents\DOT Offices\District 1\Projects\US 41\Drawings\Design\DistStd.dgn	DRAWN -	REVISED - R. MIRS 12-11-97	346			2019-008-I	LAKE	22	22	
PLOT SCALE = 100.0000' / in.	CHECKED -	REVISED - T. RAMMACHER 02-02-99	TC-22			CONTRACT NO. 62H81				
PLOT DATE = 2/6/2019	DATE -	REVISED - C. JUCIUS 01-31-07	SCALE: NONE			SHEET NO. 1 OF 1 SHEETS		STA. TO STA.		FED. ROAD DIST. NO. 1 ILLINOIS FED. AID PROJECT

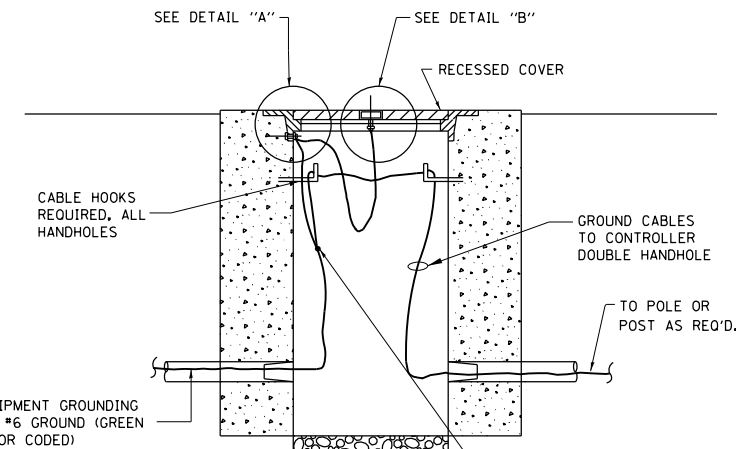


**ELECTRICAL SERVICE – PANEL DIAGRAM (TYPICAL FOR POLE AND GROUND MOUNTED SERVICE)
SERVICE INSTALLATION POLE MOUNT (SHOWN)
(NOT TO SCALE)**

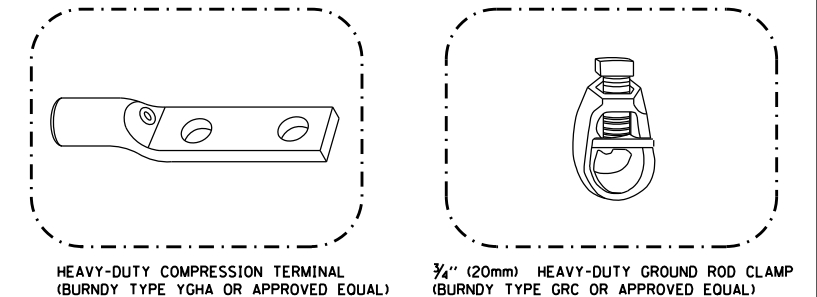


**NOTES:
GROUNDING SYSTEM**

- THE GROUNDING SYSTEM SHALL CONSIST OF AN INSULATED CONDUCTOR TYPE XLP, NO. 6 A.W.G., STRANDED COPPER TO BE INSTALLED IN RACEWAYS. THE GROUNDING CABLE SHALL BE INSTALLED IN A CONTINUOUS MANNER AS SHOWN ON THE CABLE PLAN ENCLOSED. ALL GROUNDING CONDUCTORS SHALL BE BONDED TO METAL ENCLOSURE (HANDHOLE, POST, MAST ARM, CONTROLLER, ETC.). GROUND ROD SHALL BE 3/4" DIA. x 10'-0" (20mm x 3.0m) LONG, COPPER CLAD. ONE GROUND ROD SHALL BE INSTALLED AT ALL POST FOUNDATIONS, POLE FOUNDATIONS, CONTROLLER CABINET FOUNDATION AND ELECTRICAL SERVICE INSTALLATION AS INDICATED ON THE CABLE PLAN. IF THERE ARE ANY SPECIAL CONDITIONS SUCH AS SUB-SURFACE CONDITIONS OR INSTALLATION PROBLEMS, THE RESIDENT ENGINEER SHALL BE NOTIFIED OR CONTACT THE BUREAU OF TRAFFIC, ILLINOIS DEPARTMENT OF TRANSPORTATION DISTRICT ONE AT (847) 705-4139.
- THE NEUTRAL CONDUCTOR AND THE GROUND CONDUCTOR SHALL BE CONNECTED IN THE SERVICE INSTALLATION. AT NO OTHER POINT IN THE TRAFFIC SIGNAL SYSTEM SHALL THE NEUTRAL AND GROUND CONDUCTORS BE CONNECTED.
- ALL EQUIPMENT GROUNDING CONDUCTORS SHALL TERMINATE AT THE GROUND BUS IN THE CONTROLLER CABINET.
- THE CONTRACTOR SHALL PROVIDE A GROUND CABLE WITH CONNECTORS BETWEEN THE HANDHOLE COVER AND HANDHOLE FRAME.

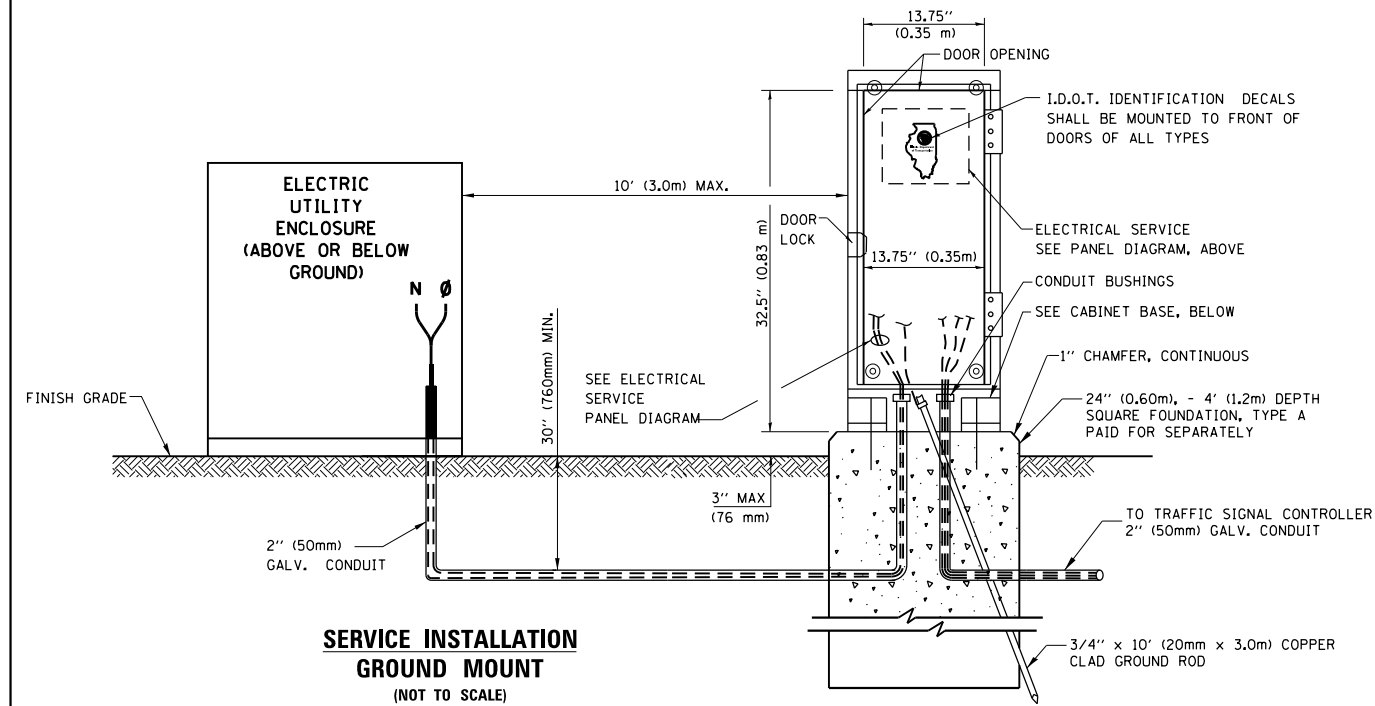


**HANDHOLE COVER & FRAME – GROUNDING DETAIL
(NOT TO SCALE)**

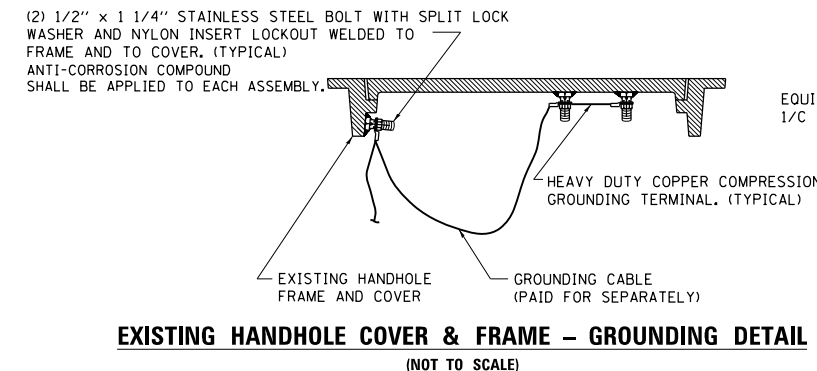


NOTES:

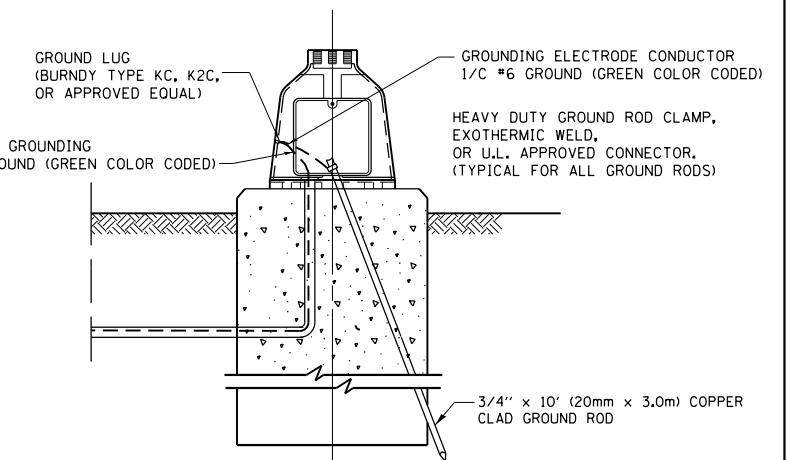
- ALL CLAMPS SHALL BE BRONZE OR COPPER, UL APPROVED.
- GROUND CABLE SHALL BE LOOPED OVER HOOKS IN THE HANDHOLES 6.5' (2.0m) SLACK SHALL BE PROVIDED IN SINGLE HANDHOLES 13' (4.0m) OF SLACK SHALL BE PROVIDED IN DOUBLE HANDHOLES. 5' (1.4m) OF SLACK SHALL BE PROVIDED BETWEEN FRAME AND COVER.



**SERVICE INSTALLATION GROUND MOUNT
(NOT TO SCALE)**

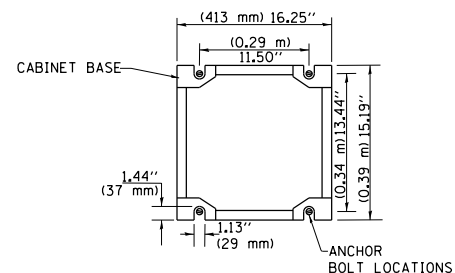


**EXISTING HANDHOLE COVER & FRAME – GROUNDING DETAIL
(NOT TO SCALE)**



**MAST ARM POLE / POST-GROUNDING DETAIL
(NOT TO SCALE)**

**CABINET – BASE BOLT PATTERN
(NOT TO SCALE)**



FILE NAME =	USER NAME = rostkowski	DESIGNED -	REVISED -
pw\planroom.dot.illinois.gov\PIWIDOT\Documents\IDOT Offices\District 1\Projects\011231\DRAWING\Design\DistStd.dgn		DRAWN -	REVISED -
Default	PLOT SCALE = 100.0000' / in.	CHECKED -	REVISED -
	PLOT DATE = 3/19/2019	DATE -	REVISED -

**STATE OF ILLINOIS
DEPARTMENT OF TRANSPORTATION**

**DISTRICT ONE
STANDARD TRAFFIC SIGNAL DESIGN DETAILS**

SCALE: NONE SHEET 4 OF 7 SHEETS STA. TO STA.

F.A. RTE.	SECTION	COUNTY	TOTAL SHEETS	SHEET NO.
346	2019-008-I	LAKE	22	22A
TS-05		CONTRACT NO. 62H81		
ILLINOIS FED. AID PROJECT				