

STATE OF ILLINOIS
DEPARTMENT OF TRANSPORTATION

FAU/OR RTE. 9236/ 104	SECTION 33-V-RS-1, 215RS-1	COUNTY ST. CLAIR	TOTAL SHEETS 9	SHEET NO. 1
ILLINOIS CONTRACT NO. 76M00				

FOR INDEX OF SHEETS, SEE SHEET NO. 2

PROPOSED
HIGHWAY PLANS

FAU ROUTE 9236/OR (20th ST. & 47th ST.)
104 SECTION 33-V-RS-1, 215RS-1
RESURFACING - 3P - CM
ST CLAIR COUNTY

20TH ST. CENTRAL AVE TO REED ST.

2018 ADT = 275 (ACTUAL)
2019 ADT = 275 (ESTIMATED)
2035 ADT = 300 (ESTIMATED)
SU = 7.0% MU = 2.5%

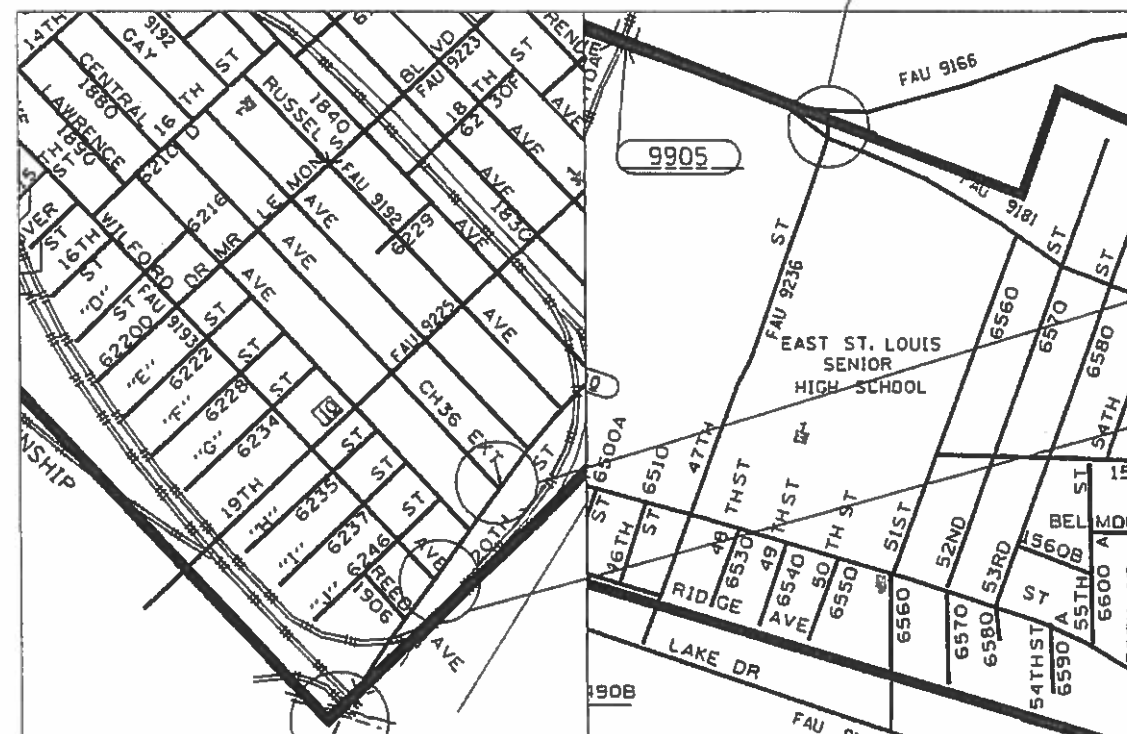
N. 47TH ST. SUMMIT AVE TO ST. CLAIR AVE.

2018 ADT = 2400 (ACTUAL)
2019 ADT = 2400 (ESTIMATED)
2035 ADT = 2600 (ESTIMATED)
SU = 2.9% MU = 3.3%



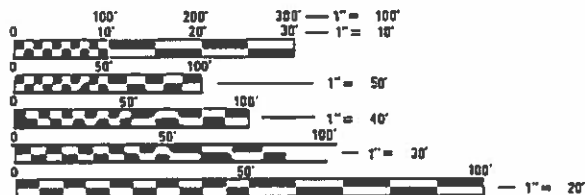
C-98-008-19

START ST. CLAIR AVE.
END SUMMIT AVE.
STA. 0+00 to STA. 2+67
LAT.: 38.614203
LONG.: -90.102802



START CENTRAL AVE.
STA. 39+86.5
LAT.: 38.598367
LONG.: -90.155085

END REED AVE.
STA. 53+86.2
LAT.: 38.596957
LONG.: -90.156625



FULL SIZE PLANS HAVE BEEN PREPARED USING STANDARD ENGINEERING SCALES. REDUCED SIZED PLANS WILL NOT CONFORM TO STANDARD SCALES. IN MAKING MEASUREMENTS ON REDUCED PLANS, THE ABOVE SCALES MAY BE USED.

J.U.L.I.E.
JOINT UTILITY LOCATION INFORMATION FOR EXCAVATION
1-800-892-0123
OR 811

GROSS LENGTH = 1327.83 FT. = 0.25 MILES
NET LENGTH = 1327.81 FT.

GROSS LENGTH = 269.02 FT. = 0.05 MILES
NET LENGTH = 260.14 FT.

PROJECT ENGINEER HERVE GELIN (618) 346-3179
PROJECT MANAGER ALVIN NIEVES-ROSARIO (618) 346-3145

CONTRACT NO. 76M00

STATE OF ILLINOIS
DEPARTMENT OF TRANSPORTATION

SUBMITTED Feb 7 20 19
Karl Roberts
REGIONAL ENGINEER

March 22 20 19
E.A. Elk
ENGINEER OF DESIGN AND ENVIRONMENT

March 22 20 19
Paul [Signature]
DEPARTMENT OF HIGHWAYS, PROJECT IMPLEMENTATION

PRINTED BY THE AUTHORITY
OF THE STATE OF ILLINOIS

INDEX OF SHEETS

- 1. COVER SHEET
- 2. HIGHWAY STANDARDS, GENERAL NOTES & COMMITMENTS
- 3-3A. SUMMARY OF QUANTITIES
- 4-5. TYPICAL SECTIONS
- 6-7. LOCATION MAP & RESURFACING PLAN
- 8. PLAN DETAILS
- 9-9A. SCHEDULE OF QUANTITIES

GENERAL NOTES

1. ILLINOIS STATE LAW REQUIRES A 48-HOUR NOTICE TO BE GIVEN TO ALL UTILITIES WITHIN THE PROJECT AREA BEFORE DIGGING. FIELD MARKING OF FACILITIES MAY BE OBTAINED BY CONTACTING J.U.L.I.E. (1-800-892-0123 OR 811) OR FOR NON-MEMBERS THE UTILITY COMPANY DIRECTLY. AGENCIES KNOWN TO HAVE FACILITIES WITHIN THE PROJECT AREA ARE AS FOLLOWS:

- * AMEREN ILLINOIS GAS & ELECTRIC
- * AT&T ILLINOIS COMMUNICATIONS
- * BP PIPELINES (NORTH AMERICA) INC.
- * BUCKEYE PARTNERS L.P.-WOOD RIVER PIPELINE
- * CHARTER COMMUNICATIONS, INC. (CABLE TV)
- * CITY OF EAST ST. LOUIS (LIGHTING)
- * ENABLE MIDSTREAM PARTNERS (PIPELINE)
- * ILLINOIS AMERICAN WATER COMPANY (WATER)
- * METRO (COMMUNICATIONS)
- * VILLAGE OF WASHINGTON PARK (WATER & SANITARY)

MEMBERS OF J.U.L.I.E. CALL TOLL FREE (800) 892-0123 OR 811 AND ARE INDICATED BY *. NON-J.U.L.I.E. MEMBERS MUST BE NOTIFIED INDIVIDUALLY.

- 2. THE CONTRACTOR AND THE ENGINEER SHALL BE AWARE THAT NO SURVEY WAS PERFORMED FOR THIS PROJECT. THE STATIONING AND TOPOGRAPHY SHOWN IN THE PLANS WAS CREATED USING MICROFILM AND FIELD MEASUREMENTS. BOTH SHALL BE ASSUMED TO BE APPROXIMATE. THE CONTRACTOR SHALL VERIFY DIMENSIONS AND CONDITIONS IN THE FIELD PRIOR TO CONSTRUCTION AND ORDERING OF MATERIALS.
- 3. NO OVERNIGHT LANE CLOSURES WILL BE PERMITTED.
- 4. THE DEPARTMENT STRONGLY ENCOURAGES THE PRIME CONTRACTOR AND THEIR APPROVED SUB-CONTRACTORS TO HIRE MINORITY, WOMEN AND DISADVANTAGED INDIVIDUALS FROM ITS FEDERALLY FUNDED HIGHWAY CONSTRUCTION CAREERS TRAINING PROGRAM (HCCTP) TO HELP MEET WORKFORCE AND TRAINEE GOALS, THIS PROGRAM IS TRAINING MINORITIES, WOMEN AND DISADVANTAGED INDIVIDUALS IN HIGHWAY CONSTRUCTION-RELATED SKILLS, E.G., MATH FOR THE TRADES, JOB READINESS, TECHNICAL SKILLS COURSEWORK (CARPENTRY, CONCRETE FLATWORK, BLUEPRINT READING, SITE PLANS, SITE WORK, TOOLS USE, ETC.) AND OSHA 10 HOUR CERTIFICATION, TO PREPARE THEM FOR A CAREER IN THE HIGHWAY CONSTRUCTION TRADES, GRADUATES ARE WELL-TRAINED AND READY TO BECOME PRODUCTIVE ENTRY-LEVEL CONSTRUCTION WORKERS, CONTACT THE DISTRICT 8 EEO OFFICE AT 618-346-3360 AND/OR THE HCCTP COORDINATOR AT 618-874-6528 TO LEARN MORE ABOUT THE PROGRAM AND FOR ASSISTANCE IN MEETING WORKFORCE AND TRAINEE GOALS.
- 5. THE PAVEMENT MARKINGS SHALL BE LOCATED TO MATCH THE EXISTING PAVEMENT MARKING AS DIRECTED BY THE ENGINEER.
- 6. ACCESS SHALL BE MAINTAINED TO ALL PROPERTIES UNLESS OTHERWISE NOTED IN THE PLANS.
- 7. "ROAD CONSTRUCTION AHEAD" SIGNS SHALL BE PLACED AT EACH END OF THE PROJECT PLUS THE INTERSECTING SIDE ROADS, AND WILL BE CONSIDERED INCLUDED IN THE TRAFFIC CONTROL PAY ITEMS. ALL CONSTRUCTION SIGNS SHALL BE 48" X 48" FLUORESCENT ORANGE.

STANDARDS

- 000001-07 STANDARD SYMBOLS, ABBREVIATIONS AND PATTERNS
- 001006 DECIMAL OF AN INCH AND OF A FOOT
- 420701-03 PAVEMENT WELDED WIRE REINFORCEMENT
- 442101-09 CLASS B PATCHES
- 701306-04 LANE CLOSURE, 2L, 2W, SLOW MOVING OPERATIONS DAY ONLY FOR SPEEDS ≥ 45 MPH
- 701311-03 LANE CLOSURE, 2L, 2W MOVING OPERATION-DAY ONLY
- 701336-07 LANE CLOSURE, 2L, 2W, WORK AREAS IN SERIES FOR SPEEDS ≥ 45 MPH
- 701501-06 URBAN LANE CLOSURE, 2L, 2W, UNDIVIDED
- 701701-10 URBAN LANE CLOSURE, MULTILANE INTERSECTION
- 701901-08 TRAFFIC CONTROL DEVICES
- 780001-05 TYPICAL PAVEMENT MARKINGS

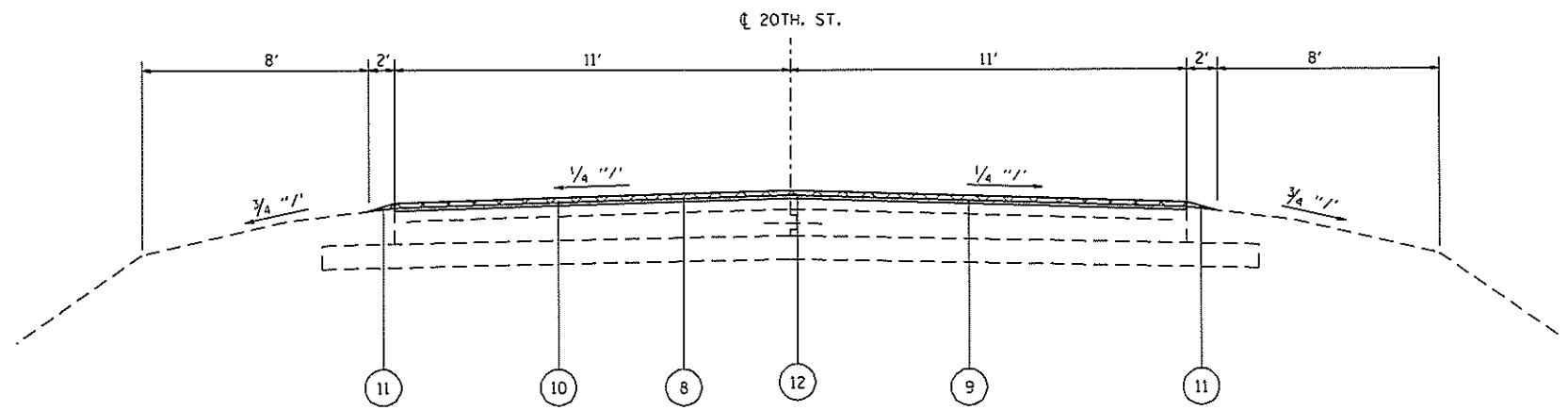
COMMITMENTS

NONE

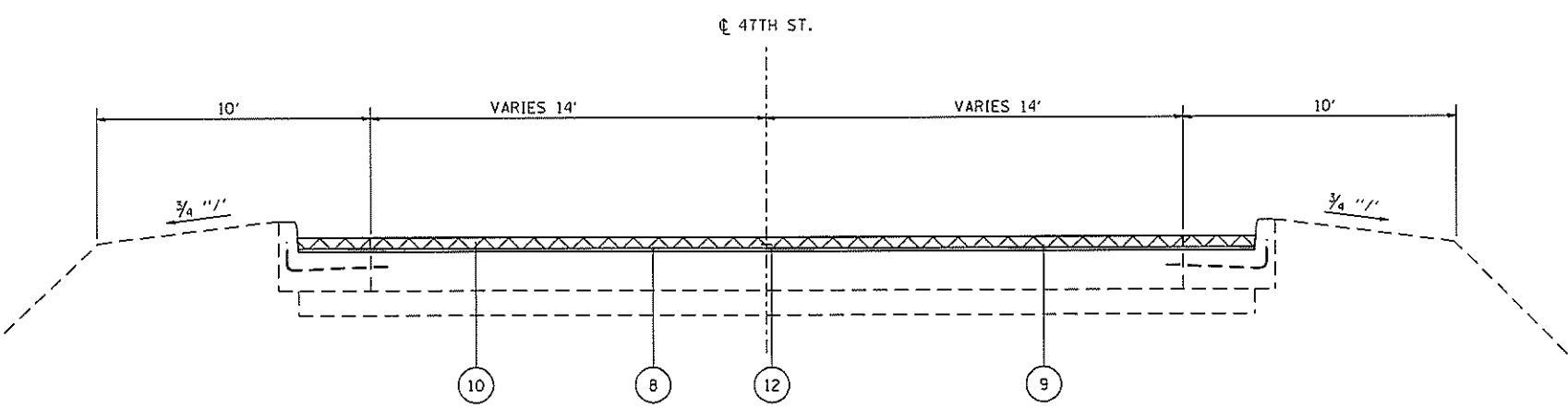
MIXTURE USE	SURFACE	LEVEL BINDER
AC/PG	PG 64-22	PG 64-22
RAP % (MAX)	SPECIAL PROVISION	SPECIAL PROVISION
DESIGN AIR VOIDS	4.0% @ Ndes=70	4.0% @ Ndes=70
MIX COMPOSITION		
(GRADATION MIXTURE)	IL 9.5	IL 9.5 FG
FRICITION AGG	MIXTURE "C"	MIXTURE "C"

REV. - MS

FILE NAME =	USER NAME = rose1001	DESIGNED -	REVISED -	STATE OF ILLINOIS DEPARTMENT OF TRANSPORTATION	HIGHWAY STANDARDS, GENERAL NOTES AND COMMITMENTS	F.A.U. RTE/OR	SECTION	COUNTY	TOTAL SHEETS	SHEET NO.	
pw\ill084EBIDINTEG.illinois.gov\PIWIDOT\Documents\DOT Offices\District 8\Projects\0875\DRAMA\DATA\CAD\Sheets\087M00-shr-genno		CHECKED -	REVISED -			9236 /104	33-V-RS-1, 215RS-1	ST CLAIR	9	2	
Default	PLOT SCALE = 100.0000' / in.	DATE -	REVISED -			SHEET OF SHEETS STA. TO STA.		CONTRACT NO. 76M00			
	PLOT DATE = 2/13/2019	DATE -	REVISED -			ILLINOIS FED. AID PROJECT					



PROPOSED TYPICAL SECTION 20TH ST.
STA. 39+86.5 TO STA. 53+06.2



PROPOSED TYPICAL SECTION 47TH ST.
STA. 0+00.00 TO STA. 2+67.3

- LEGEND**
- ① EXISTING P.C.C. PAVEMENT - 10"
 - ② EXISTING SUB-BASE GRANULAR MATERIAL TYPE A - 6"
 - ③ EXISTING PAVEMENT FABRIC
 - ④ EXISTING GRAVEL OR CRUCHEDED STONE SHOULDER, TYPE B
 - ⑤ EXISTING CONCRETE CURB AND GUTTER, TYPE A
 - ⑥ EXISTING CURB AND GUTTER
 - ⑦ EXISTING LONGITUDINAL METAL JOINT
 - ⑧ PROPOSED BINDER - 1"
 - ⑨ PROPOSED BITUMINOUS MATERIALS (TACK COAT)
 - ⑩ PROPOSED HMA SURFACE COURSE - 1 1/2"
 - ⑪ PROPOSED AGGREGATE, WEDGE SHOULDER - 1 1/2"
 - ⑫ PROPOSED LONGITUDINAL JOINT SEALANT



MODEL: Default
 FILE NAME: \\N:\GIS\BIDDING\REG_Images\pwr\PROJECT\Documents\TSDT_Offices\Subsect_8\Projects\08B\64600\CADD\Drawings\0877400_011_Typical.dwg

USER NAME = nicholsonw	DESIGNED - _____	REVISED - _____
	DRAWN - _____	REVISED - _____
PLOT SCALE = 100.0000' / in	CHECKED - _____	REVISED - _____
PLOT DATE = 2/5/2019	DATE - _____	REVISED - _____

**STATE OF ILLINOIS
DEPARTMENT OF TRANSPORTATION**

PROPOSED TYPICAL SECTIONS	
SCALE NTS	SHEET 2 OF 2 SHEETS STA. _____ TO STA. _____

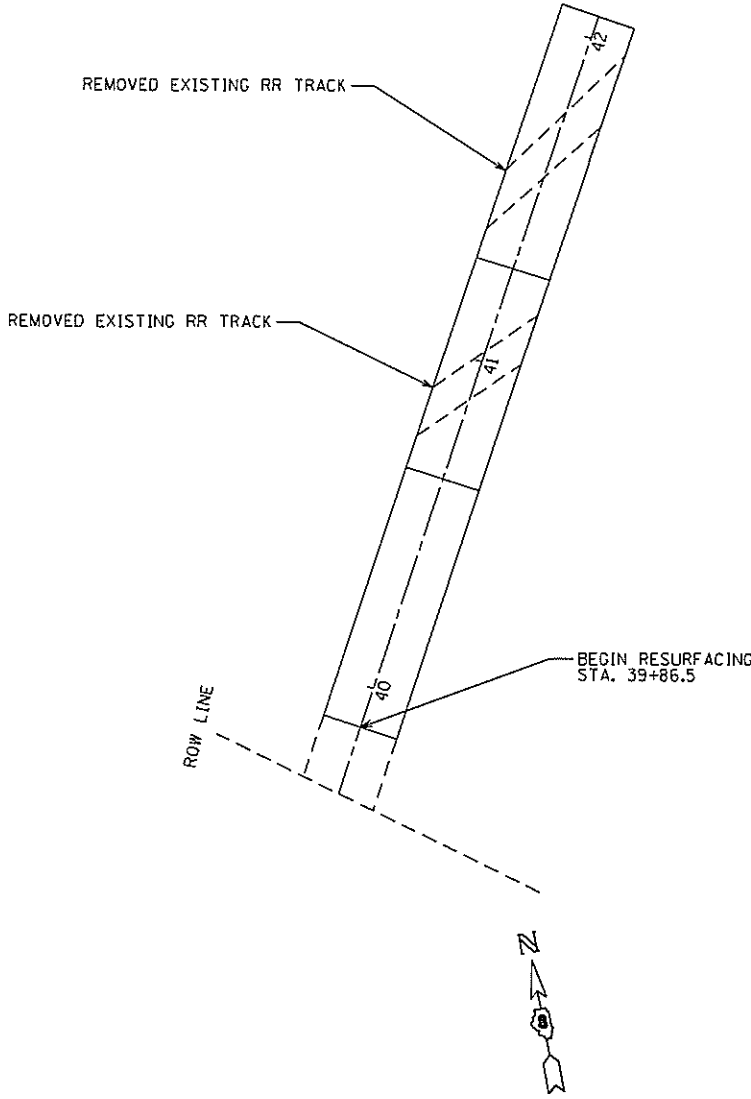
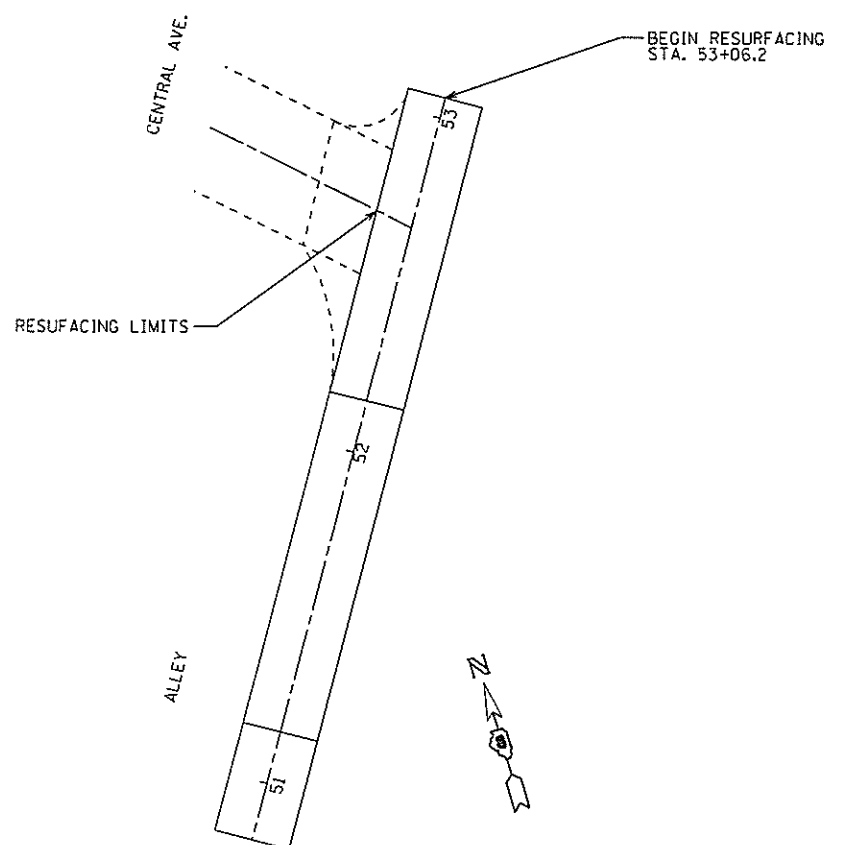
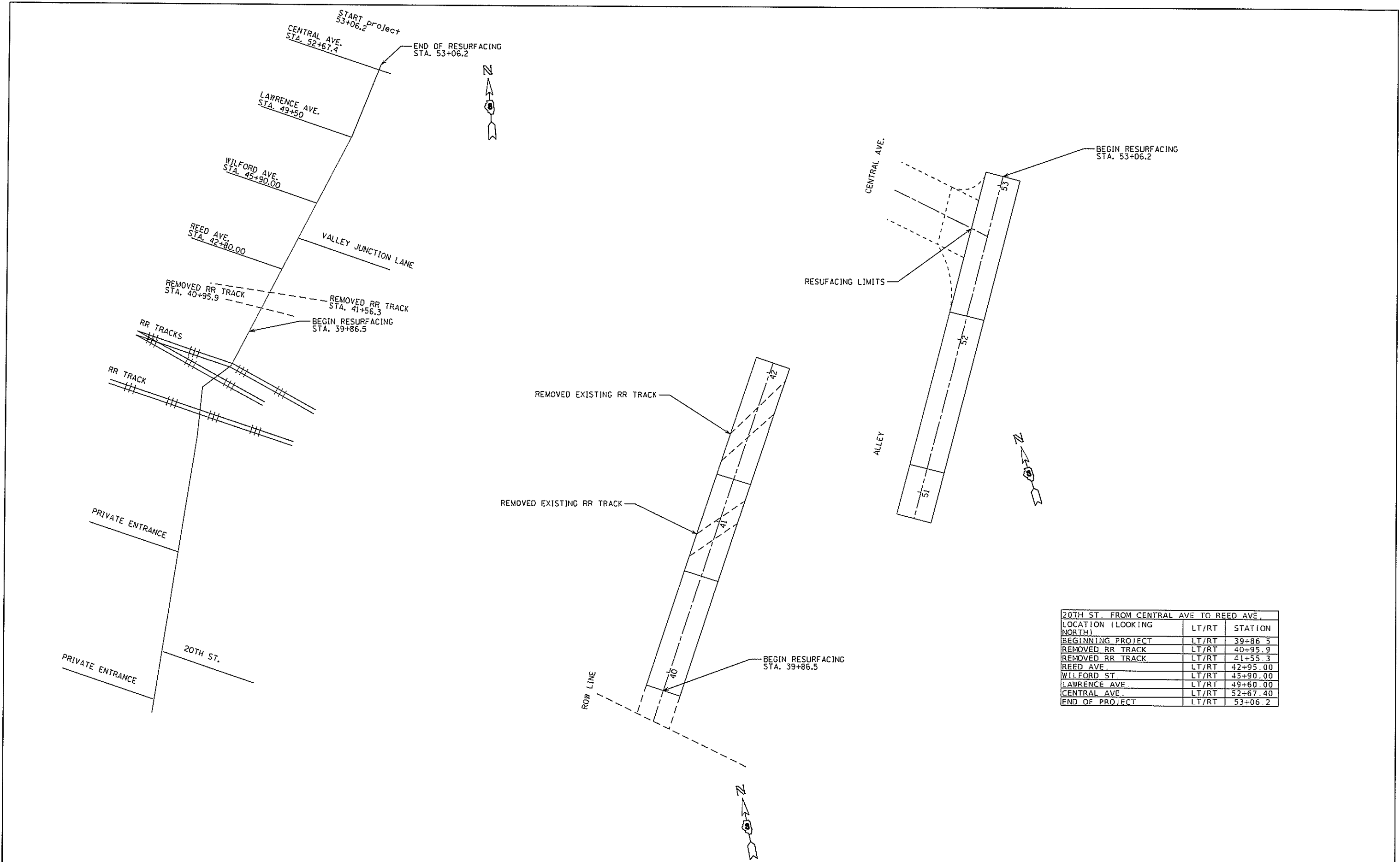
F.A.U. DATE/QR 9/23/104	SECTION 33-V-RS-1, 215RS-1	COUNTY ST CLAIR	TOTAL SHEETS 9	SHEET NO. 5
CONTRACT NO. 76M00			ILLINOIS FED AID PROJECT	



47TH ST. FROM US 50 ST. CLAIR AVE.		
LOCATION (LOOKING SOUTH)	LT/RT	STATION
BEGINNING	LT/RT	0+00
SUMMIT AVE	LT	1+60
OFF RAMP	RT	1+95
END OF PROJECT	LT/RT	2+67.3

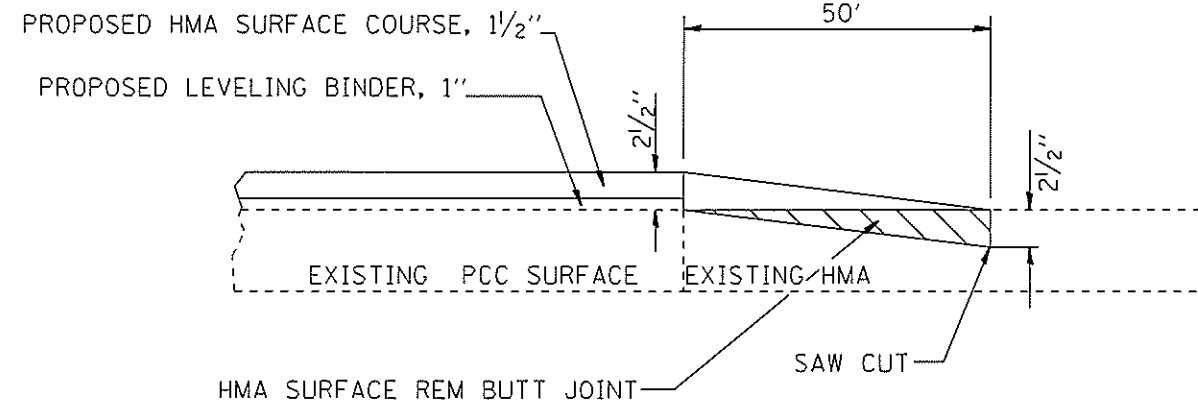
NOT TO SCALE

FILE NAME =	USER NAME = nicholsenav	DESIGNED -	REVISED -	STATE OF ILLINOIS DEPARTMENT OF TRANSPORTATION	RESURFACING PLANS 47TH ST.		F.A.U. RTE/OR	SECTION	COUNTY	TOTAL SHEETS	SHEET NO.	
Default		CHECKED -	REVISED -		SCALE: NTS	SHEET 1 OF 2 SHEETS	STA. _____ TO STA. _____	9235/104	33-V-RS-1, 215RS-1	ST CLAIR	9	6
		DATE -	REVISED -		ILLINOIS FED. AID PROJECT							
					CONTRACT NO. 76MOO							



20TH ST. FROM CENTRAL AVE TO REED AVE.		
LOCATION (LOOKING NORTH)	LT/RT	STATION
BEGINNING PROJECT	LT/RT	39+86.5
REMOVED RR TRACK	LT/RT	40+95.9
REMOVED RR TRACK	LT/RT	41+55.3
REED AVE.	LT/RT	42+95.00
WILFORD ST.	LT/RT	45+90.00
LAWRENCE AVE.	LT/RT	49+60.00
CENTRAL AVE.	LT/RT	52+67.40
END OF PROJECT	LT/RT	53+06.2

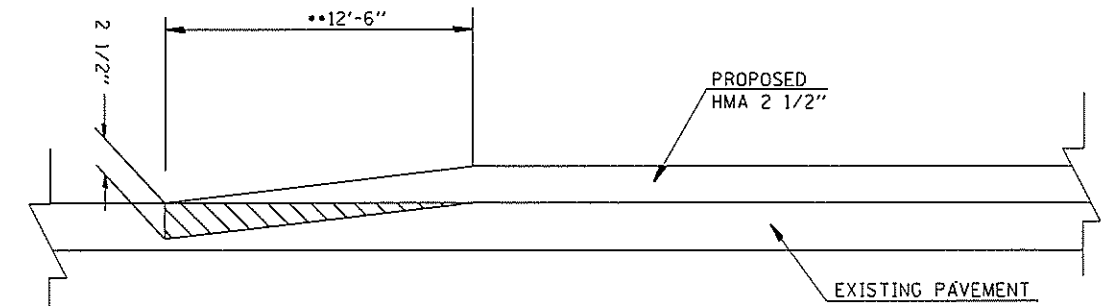
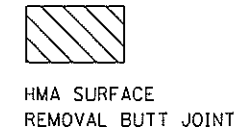
NOT TO SCALE



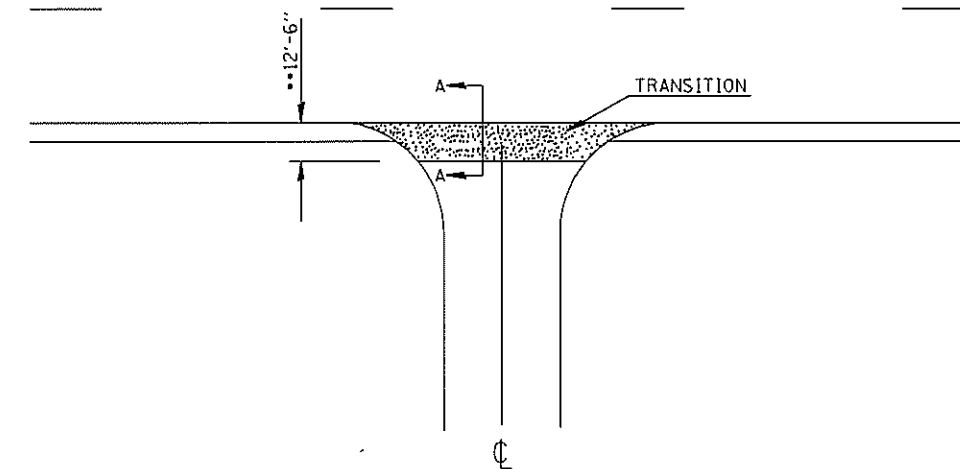
BUTT JOINT DETAIL

STATIONS
 47TH ST. STA. 0+00
 47TH ST. STA. 2+67.5
 20TH ST. STA. 53+06.2
 20TH ST. STA. 39+86.05

NOT TO SCALE



**TRANSITION DETAIL
SECTION A-A**



SIDEROAD DETAIL

STATIONS
 20TH ST. @ CENTRAL AVE. STA. 52+67.4
 20TH ST. @ LAWRENCE AVE. STA. 49+60
 20TH ST. @ WILLFORD AVE. STA. 45+90
 20TH ST. @ VALLEY JCT LANE STA. 44+20
 20TH ST. @ REED AVE. STA. 42+80
 47TH ST @ SUMMIT AVE. STA. 01+26
 47TH ST. @ ST. CLAIR OFF RAMP STA. 01+95

*EOP ELEVATION CHANGE	**TOTAL TRANSITION LENGTH
3/4"	3.5'
1"	5'
1-1/2"	7.5'
2"	10'
2-1/2"	12.5'
3"	15'
3-1/2"	17.5'
4"	20'
4-1/2"	22.5'
5"	25'
5-1/2"	27.5'
6"	30'

NOTE:
 WHERE THE HMA TRANSITION IS MATCHING INTO AN EXISTING HMA SIDE ROAD SURFACE, A MILLED BUTT JOINT SHALL BE CONSTRUCTED WITHIN THE LIMITS OF THE TOTAL TRANSITION LENGTH ON THE SIDE ROAD.

SIDEROAD TRANSITION DETAIL

FILE NAME =	USER NAME = nicholson	DESIGNED -	REVISED -	STATE OF ILLINOIS DEPARTMENT OF TRANSPORTATION	PLAN DETAILS			F.A.S. R1E/0R	SECTION	COUNTY	TOTAL SHEETS	SHEET NO.
p:\11084EBID\INTEG\illinois.gov\PIWIDT\Documents\DOT Offices\District 8\Projects\0876M00\CRW\CAD\Drawings\0876M00-shr-plan.dgn	PLDT SCALE = 100.0000' / in.	CHECKED -	REVISED -					9236/104	33-V-RS-1, 215RS-1	ST. CLAIR	9	8
PLDT DATE = 2/5/2019	DATE -	REVISED -	REVISED -		SCALE: _____	SHEET NO. _____ OF _____ SHEETS	STA. _____ TO STA. _____	ILLINOIS FED. AID PROJECT				
					CONTRACT NO. 76MOO							

PATCHING SCHEDULE													
LOCATION	DIRECTION	LENGTH (FT)	WIDTH (FT)	CLASS B PATCH, 10"			SAW CUTS FOOT	DOWEL BARS, 1 1/2" EACH	TIE BARS, 3/4" EACH	WELDED WIRE REINFORCEMENT SQ YD			
				TYPE II	TYPE III	TYPE IV							
				SQ YD	SQ YD	SQ YD							
STA. 39+86.5	NB	6	11	8			45	18					
STA. 39+86.5	SB	6	11	8			45	18					
STA. 40+52.8	SB	6	11	8			45	18					
STA. 41+28.8	NB	14	11		18		61	18		18			
STA. 41+28.8	SB	14	11		18		61	18		18			
STA. 42+05.6	NB	20	11		25		73	18	9	25			
STA. 42+05.7	SB	20	11		25		73	18	9	25			
STA. 43+05.6	NB	6	11	8			45	18					
STA. 43+05.6	SB	6	11	8			45	18					
STA. 44+05.6	NB	50	11			62	133	18	24	62			
STA. 45+05.6	NB	6	11	8			45	18					
STA. 45+05.6	SB	6	11	8			45	18					
STA. 46+05.6	NB	6	11	8			45	18					
STA. 46+05.6	SB	6	11	8			45	18					
STA. 47+05.6	NB	6	11	8			45	18					
STA. 47+05.6	SB	6	11	8			45	18					
STA. 48+05.6	NB	6	11	8			45	18					
STA. 48+05.6	SB	6	11	8			45	18					
STA. 48+52.8	NB	6	11	8			45	18					
STA. 48+52.8	SB	6	11	8			45	18					
STA. 49+02.8	NB	6	11	8			45	18					
STA. 49+52.8	NB	6	11	8			45	18					
STA. 49+52.8	SB	6	11	8			45	18					
STA. 50+52.8	NB	6	11	8			45	18					
STA. 50+52.8	SB	6	11	8			45	18					
STA. 51+05.6	NB	6	11	8			45	18					
STA. 51+05.6	SB	6	11	8			45	18					
STA. 52+14.6	NB	6	11	8			45	18					
STA. 52+14.6	SB	6	11	8			45	18					
47TH ST													
STA. 0+00	NB	15	19			32	87	34					
STA. 00+52.8	NB	6	19	13			69	34					
STA. 00+52.8	SB	6	19	13			69	34					
STA. 01+05.6	NB	50	19			106	157	34	24	106			
STA. 01+05.6	MIDDLE	100	19			212	257	34	49	212			
STA. 01+05.6	SB	18	19			38	93	34		38			
STA. 01+58.4	SB	25	19			53	107	34	12	53			
STA. 02+11.2	SB	25	19			53	107	34	12	53			
STA. 02+64.0	SB	15	19			32	87	34		32			
STA. 01+58.4	NB	30	19			64	117	34	14	64			
STA. 02+11.2	NB	30	19			64	117	34	14	64			
STA. 02+64.0	NB	40	19			85	137	34	19	85			
SUB-TOTAL							218	86	801	2885	930	186	855
15% ANTICIPATED FAILURES							33	13	121	433	140	28	129
TOTAL							251	99	922	3318	1070	214	984

MODEL: Default
 FILE: \\hpc01\p01\B&E\BIDD\ITEC\Illinois\gov\PI\DOT\Documents\1\DOT - Offices\DI\refct 8\Project\076M00\CADD\03aCAD\chere\076M00-076-schedule.dgn

USER NAME = rosarioai	DESIGNED -	REVISED -
	DRAWN -	REVISED -
PLOT SCALE = 100,0000' / in.	CHECKED -	REVISED -
PLOT DATE = 2/13/2019	DATE -	REVISED -

STATE OF ILLINOIS
DEPARTMENT OF TRANSPORTATION

SCHEDULE OF QUANTITIES

SCALE: SHEET OF SHEETS STA. TO STA.

F.A.U. RTE.	SECTION	COUNTY	TOTAL SHEETS	SHEET NO.
9236/104	33-V-RS-1, 215RS-1	ST. CLAIR	9	9A
CONTRACT NO. 76M00				
ILLINOIS		FED. AID PROJECT		