

STATE OF ILLINOIS
DEPARTMENT OF TRANSPORTATION

F.A.U. RTE.	SECTION	COUNTY	TOTAL SHEETS	SHEET NO.
9128	28RS-7	MADISON	8	J
		ILLINOIS	CONTRACT NO. 76M09	

D-98-014-19



LOCATION OF SECTION INDICATED THIS: -

FOR INDEX OF SHEETS, SEE SHEET NO. 2

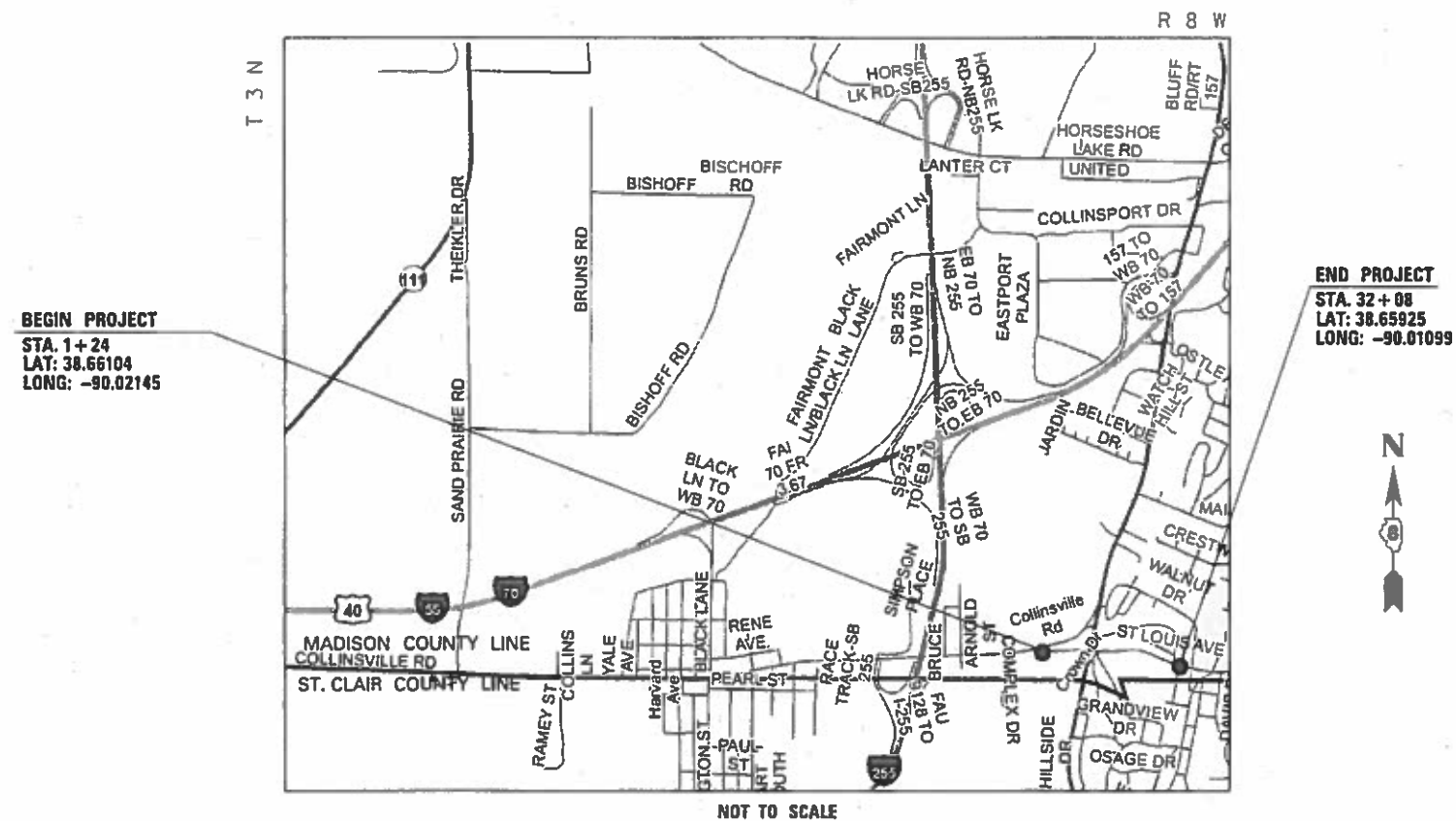
LOCATION	TRAFFIC DATA
	OLD US 40
2018 ADT	6600 (ACTUAL)
2038 ADT	7800 (ESTIMATED)
MU%	2.9
SU%	6.4

PROPOSED HIGHWAY PLANS

FAU ROUTE 9128 (OLD US 40)
SECTION 28RS-7

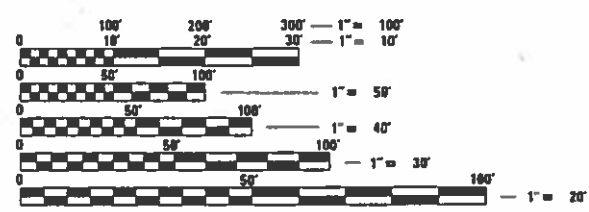
MICROSURFACING (1 PASS) - CM
MADISON COUNTY

C-98-017-19



BEGIN PROJECT
STA. 1+24
LAT: 38.66104
LONG: -90.02145

END PROJECT
STA. 32+08
LAT: 38.65925
LONG: -90.01099



FULL SIZE PLANS HAVE BEEN PREPARED USING STANDARD ENGINEERING SCALES. REDUCED SIZED PLANS WILL NOT CONFORM TO STANDARD SCALES. IN MAKING MEASUREMENTS ON REDUCED PLANS, THE ABOVE SCALES MAY BE USED.

J.U.L.I.E.
JOINT UTILITY LOCATION INFORMATION FOR EXCAVATION
1-800-892-9123
OR 811

PROJECT ENGINEER: TIM PADGETT (618) 346-3325
PROJECT MANAGER: RAHSHUN MILLER (618) 346-3196

GROSS LENGTH = 3,084.0 FT. = 0.58 MILE
NET LENGTH = 3,084.0 FT. = 0.58 MILE

TOWNSHIP: COLLINSVILLE

STATE OF ILLINOIS
DEPARTMENT OF TRANSPORTATION

SUBMITTED Jan 25 20 19
Keith Roberts
REGIONAL ENGINEER

March 22 20 19
EA, ETC
ENGINEER OF DESIGN AND ENVIRONMENT

March 22 20 19
David P. Chif
DIRECTOR OF HIGHWAYS PROJECT IMPLEMENTATION

PRINTED BY THE AUTHORITY
OF THE STATE OF ILLINOIS

CONTRACT NO. 76M09

INDEX OF SHEETS

- 1 COVER SHEET
- 2 INDEX OF SHEETS, GENERAL NOTES, HIGHWAY STANDARDS, MIXTURE REQUIREMENTS & COMMITMENTS
- 3 SUMMARY OF QUANTITIES
- 4 TYPICAL SECTIONS
- 5-6 SCHEDULE OF QUANTITIES
- 7 PAVEMENT MARKING SHEET
- 8 DETAIL SHEET

HIGHWAY STANDARDS

000001-07	STANDARD SYMBOLS, ABBREVIATIONS AND PATTERNS
001006	DECIMAL OF AN INCH AND OF A FOOT
701502-09	URBAN LANE CLOSURE, 2L, 2W WITH BIDIRECTIONAL LEFT TURN LANE
701602-10	URBAN LANE CLOSURE, MULTILANE, 2W WITH BIDIRECTIONAL LEFT TURN LANE
701606-10	URBAN SINGLE LANE CLOSURE, MULTILANE, 2W WITH MOUNTABLE MEDIAN
701611-01	URBAN HALF ROAD CLOSURE, MULTILANE, 2W WITH MOUNTABLE MEDIAN
701901-08	TRAFFIC CONTROL DEVICES
780001-05	TYPICAL PAVEMENT MARKINGS
781001-04	TYPICAL APPLICATIONS RAISED REFLECTIVE PAVEMENT MARKERS

MIXTURE REQUIREMENTS

ROUTE	FAU 9128 (Old US 40)
SECTION	28RS-7
COUNTY	Madison
CONTRACT	76M09

DESCRIPTION	Micro-Surfacing-Single Pass-Old US 40 (St. Louis Rd.) from 0.1 mi E of Collinsville Rd. to National Treasure in Collinsville
-------------	--

ADT (CONSTRUCTION YR.):	6600
MU%	2.9
SU%	6.4
20 YR. ESAL'S	1.41

MIXTURE USE	MICRO-SURFACE	PARTIAL DEPTH PATCHING
AC/PG		PG 64-22
RAP % (MAX)		SEE SPECIAL PROVISION
DESIGN AIR VOIDS		4.0 % @ Ndes=70
MIX COMPOSITION (Gradation)		IL 9.5
FRICTION AGG	MIXTURE "D"	MIXTURE "D"
QUALITY MGMT PROGRAM		QC/QA

COMMITMENTS

NONE

GENERAL NOTES

- ① ILLINOIS STATE LAW REQUIRES A 48-HOUR NOTICE TO BE GIVEN TO ALL UTILITIES WITHIN THE PROJECT AREA BEFORE DIGGING. FIELD MARKING OF FACILITIES MAY BE OBTAINED BY CONTACTING J.U.L.I.E. OR FOR NON-MEMBERS, THE UTILITY COMPANY DIRECTLY. AGENCIES KNOWN TO HAVE FACILITIES WITHIN THE PROJECT AREA ARE AS FOLLOWS:

	AERIAL	BURIED
*AMEREN ILLINOIS (GAS & ELECTRIC)	x	x
*AT&T ILLINOIS (COMMUNICATIONS)	x	x
*CHARTER COMMUNICATIONS, INC. (CABLE TV)	x	x
*CITY OF COLLINSVILLE (WATER & SANITARY SEWER)		x
*ILLINOIS NETWORK ALLIANCE (COMMUNICATIONS)	x	x
*ILLINOIS RURAL HEALTHNET (COMMUNICATIONS)	x	
*VERIZON BUSINESS (COMMUNICATIONS)	x	x
*WINDSTREAM KDL, INC.	x	x

MEMBERS OF J.U.L.I.E. CALL TOLL FREE (800) 892-0123 OR 811 AND ARE INDICATED BY *. NON-J.U.L.I.E. MEMBERS MUST BE NOTIFIED INDIVIDUALLY.

- ② THE CONTRACTOR AND THE ENGINEER SHALL BE AWARE THAT NO SURVEY WAS PERFORMED FOR THIS PROJECT. THE STATIONING, TOPOGRAPHY, AND QUANTITIES SHOWN IN THE PLANS WERE CREATED USING MICROFILM AND FIELD MEASUREMENTS. ALL SHALL BE ASSUMED TO BE APPROXIMATE. THE CONTRACTOR SHALL VERIFY DIMENSIONS AND CONDITIONS IN THE FIELD PRIOR TO CONSTRUCTION AND ORDERING OF MATERIALS.
- ③ THE ILLINOIS DEPARTMENT OF TRANSPORTATION STRONGLY ENCOURAGES THE PRIME CONTRACTOR AND THEIR APPROVED SUB-CONTRACTORS TO HIRE MINORITY, WOMEN AND DISADVANTAGED INDIVIDUALS FROM ITS FEDERALLY FUNDED HIGHWAY CONSTRUCTION CAREERS TRAINING PROGRAM (HCCTP) TO HELP MEET WORKFORCE AND TRAINEE GOALS. THIS PROGRAM IS TRAINING MINORITIES, WOMEN AND DISADVANTAGED INDIVIDUALS IN HIGHWAY CONSTRUCTION-RELATED SKILLS, E.G., MATH FOR THE TRADES, JOB READINESS, TECHNICAL SKILLS COURSEWORK (CARPENTRY, CONCRETE FLATWORK, BLUEPRINT READING, SITE PLANS, SITE WORK, TOOLS USE, ETC.) AND OSHA 10 HOUR CERTIFICATION, TO PREPARE THEM FOR A CAREER IN THE HIGHWAY CONSTRUCTION TRADES. GRADUATES ARE WELL-TRAINED AND READY TO BECOME PRODUCTIVE ENTRY-LEVEL CONSTRUCTION WORKERS. PLEASE CONTACT THE DISTRICT 8 EEO OFFICE AT 618-346-3360 AND/OR THE HCCTP COORDINATOR AT 618-874-6528 TO LEARN MORE ABOUT THE PROGRAM AND FOR ASSISTANCE IN MEETING WORKFORCE AND TRAINEE GOALS.
- ④ MICRO-SURFACING NEEDS TO BE FINISHED BY THE START OF SCHOOL AUGUST 1, 2019.
- ⑤ AN ESTIMATED QUANTITY OF 8409 FEET OF FIBER-MODIFIED ASPHALT CRACK SEALING HAS BEEN ADDED TO THE PLANS. EXACT LOCATIONS WILL BE DETERMINED BY THE ENGINEER.
- ⑥ NO OVERNIGHT LANE CLOSURES WILL BE PERMITTED.
- ⑦ THE PROPOSED PAVEMENT MARKINGS AND TEMPORARY PAVEMENT MARKINGS SHALL MATCH THE PAVEMENT MARKINGS SHEET AND CONTINUE THROUGHOUT THE JOB AND TIE INTO THE EXISTING PAVEMENT MARKINGS AT THE END OF THE PROJECT.
- ⑧ THE CONTRACTOR SHALL PROTECT ALL SURVEY MONUMENTS TO ENSURE THEY ARE VISIBLE UPON COMPLETION OF THE MICROSURFACING. THE PROCESS ESTABLISHED BY THE CONTRACTOR SHALL BE APPROVED BY THE RESIDENT ENGINEER PRIOR TO CONSTRUCTION AND THE COST FOR THIS WORK SHALL BE INCLUDED IN THE COST OF THE MICROSURFACING.
- ⑨ TWO CHANGEABLE MESSAGE SIGNS SHALL BE PROVIDED ALONG OLD US 40 TO ALERT DRIVERS OF THE ROAD CONSTRUCTION. CHANGEABLE MESSAGE SIGNS SHALL BE PLACED 14 DAYS PRIOR TO BEGINNING ANY WORK. EXACT LOCATIONS OF THE CHANGEABLE MESSAGE SIGNS SHALL BE DETERMINED BY THE ENGINEER.
- ⑩ THE RAISED REFLECTIVE PAVEMENT MARKERS SHALL NOT BE PLACED IN THE SAME LOCATION AS THEY WERE PREVIOUSLY INSTALLED.

STATE OF ILLINOIS
DEPARTMENT OF TRANSPORTATION

INDEX OF SHEETS, GENERAL NOTES, HIGHWAY STANDARDS,
MIXTURE REQUIREMENTS & COMMITMENTS

SCALE: SHEET OF SHEETS STA. TO STA.

F.A.U. RTE.	SECTION	COUNTY	TOTAL SHEETS	SHEET NO.
9128	28RS-7	MADISON	8	2
CONTRACT NO. 76M09				
ILLINOIS FED. AID PROJECT				

REV. - MS

CODE NO.	ITEM	UNIT	100% STATE		CONSTR. CODE	
			TOTAL QUANTITY	ROADWAY		
				0005	URBAN	
40400001	FIBER-MODIFIED ASPHALT CRACK SEALING	FOOT	8687	8687		
40400121	MICRO-SURFACING, SINGLE PASS, MIXTURE D	SQ YD	12145	12145		
40600290	BITUMINOUS MATERIALS (TACK COAT)	POUND	2733	2733		
67100100	MOBILIZATION	L SUM	1	1		
70102622	TRAFFIC CONTROL AND PROTECTION, STANDARD 701502	L SUM	1	1		
70102626	TRAFFIC CONTROL AND PROTECTION, STANDARD 701606	EACH	1	1		
70102632	TRAFFIC CONTROL AND PROTECTION, STANDARD 701602	L SUM	1	1		
70102634	TRAFFIC CONTROL AND PROTECTION, STANDARD 701611	L SUM	1	1		
70300100	SHORT TERM PAVEMENT MARKING	FOOT	4965	4965		
70300150	SHORT TERM PAVEMENT MARKING REMOVAL	SQ FT	1655	1655		
70300210	TEMPORARY PAVEMENT MARKING LETTERS AND SYMBOLS	SQ FT	452	452		
70300220	TEMPORARY PAVEMENT MARKING - LINE 4"	FOOT	13664	13664		
* 78000100	THERMOPLASTIC PAVEMENT MARKING - LETTERS AND SYMBOLS	SQ FT	452	452		
* 78000200	THERMOPLASTIC PAVEMENT MARKING - LINE 4"	FOOT	13664	13664		

CODE NO.	ITEM	UNIT	100% STATE		CONSTR. CODE	
			TOTAL QUANTITY	ROADWAY		
				0005	URBAN	
* 78100100	RAISED REFLECTIVE PAVEMENT MARKER	EACH	152	152		
78300200	RAISED REFLECTIVE PAVEMENT MARKER REMOVAL	EACH	240	240		
X0327979	PAVEMENT MARKING REMOVAL - GRINDING	SQ FT	4721	4721		
X4406025	PARTIAL DEPTH REMOVAL, TYPE I, 2.5"	SQ YD	94.7	94.7		
X4406225	PARTIAL DEPTH REMOVAL, TYPE II, 2.5"	SQ YD	84.5	84.5		
X4421000	PARTIAL DEPTH PATCHING	TON	25	25		
X7030005	TEMPORARY PAVEMENT MARKING REMOVAL	SQ FT	4555	4555		

* SPECIALTY ITEM

MODEL: Default
 FILE: \\nrcs01\p1\1108\BIBID\NTEC\Illinois.gov\FWIDOT\Documents\1108\DOT Office\BIBID\TCT 8\Projects\1108\76M09\CADD\DATA\CAD\Sheet\DE76M09-sh-500.dgn

USER NAME = millerraj	DESIGNED -	REVISED -
	DRAWN -	REVISED -
PLOT SCALE = 100.0000' / in.	CHECKED -	REVISED -
PLOT DATE = 1/16/2019	DATE -	REVISED -

**STATE OF ILLINOIS
DEPARTMENT OF TRANSPORTATION**

SUMMARY OF QUANTITIES

SCALE: NTS SHEET 1 OF 1 SHEETS STA. TO STA.

F.A.U. RTE.	SECTION	COUNTY	TOTAL SHEETS	SHEET NO.
9128	28RS-7	MADISON	7	3
CONTRACT NO. 76M09				
ILLINOIS			FED. AID PROJECT	

PARTIAL DEPTH PATCHING SCHEDULE

EASTBOUND WESTBOUND	STATION	LANE PASSING/DRIVING	WIDTH	LENGTH	PARTIAL DEPTH PATCHING	PARTIAL DEPTH REMOVAL, TYPE I, 2 1/2"	PARTIAL DEPTH REMOVAL, TYPE II, 2 1/2"
			(FOOT)	(FOOT)	(TON)	(SQ YD)	(SQ YD)
EB	4+58	PASSING	2	5	0.2	1.1	
EB	6+16	DRIVING	10	3	0.47	3.3	
EB	6+16	PASSING	10	3	0.47	3.3	
WB	6+16	DRIVING	10	3	0.5	3.3	
WB	6+16	PASSING	10	3	0.5	3.3	
EB	6+69	DRIVING	10	3	0.5	3.3	
EB	6+69	PASSING	10	3	0.5	3.3	
WB	6+69	DRIVING	10	3	0.5	3.3	
WB	6+69	PASSING	10	3	0.5	3.3	
EB	7+75	DRIVING	10	3	0.5	3.3	
EB	7+75	PASSING	10	3	0.5	3.3	
EB	8+80	DRIVING	10	3	0.5	3.3	
EB	8+80	PASSING	10	3	0.5	3.3	
WB	8+80	DRIVING	10	3	0.5	3.3	
WB	8+80	PASSING	10	3	0.5	3.3	
EB	9+33	DRIVING	10	5	0.8		5.6
EB	9+33	PASSING	10	5	0.8		5.6
WB	10+39	DRIVING	10	4	0.6	4.4	
WB	10+39	PASSING	10	4	0.6	4.4	
EB	11+44	DRIVING	10	5	0.8		5.6
EB	14+61	DRIVING	10	5	0.8		5.6
EB	14+61	PASSING	10	5	0.8		5.6
WB	16+72	DRIVING	10	5	0.8		5.6
WB	16+72	PASSING	10	5	0.8		5.6
WB	20+42	DRIVING	10	7	1.1		7.8
WB	20+42	PASSING	10	5	0.8		5.6
WB	25+70	DRIVING	10	8	1.2		8.9
WB	25+70	PASSING	10	8	1.2		8.9
EB	26+23	DRIVING	10	4	0.6	4.4	
EB	26+23	PASSING	10	4	0.6	4.4	
WB	26+23	DRIVING	10	4	0.6	4.4	
WB	26+23	PASSING	10	4	0.6	4.4	
WB	30+45	DRIVING	10	4	0.6	4.4	
SUB TOTAL:					20.8	78.9	70.4
PROJECTED FAILURES 20%					4.2	15.8	14.1
TOTAL:					25.0	94.7	84.5

MODEL: Default
 FILE: \\mllc-pc-pw\illinois\B&E\BID\NTEC\Illinois\gov\PW\DOT\Documents\DOT_Offices\Bierfert_B\Projects\0776M09\CADD\sta\CAD\cherec\0776M09-shc-schedule.dgn

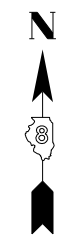
USER NAME = millerraj	DESIGNED -	REVISED -
	DRAWN -	REVISED -
PLOT SCALE = 100,0000' / in.	CHECKED -	REVISED -
PLOT DATE = 1/16/2019	DATE -	REVISED -

**STATE OF ILLINOIS
DEPARTMENT OF TRANSPORTATION**

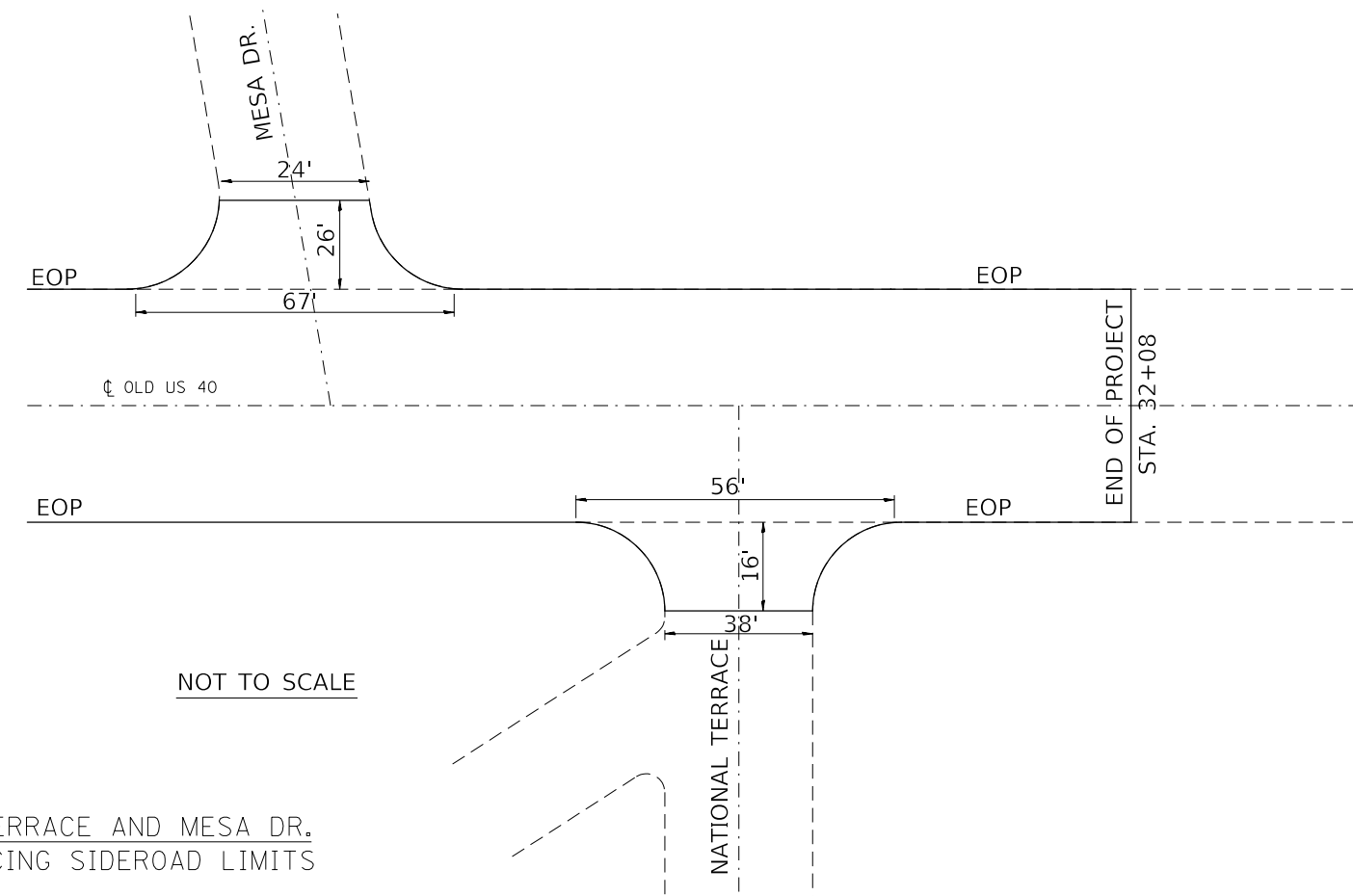
SCHEDULE OF QUANTITIES

SCALE: NTS SHEET 2 OF 2 SHEETS STA. TO STA.

F.A.U. RTE.	SECTION	COUNTY	TOTAL SHEETS	SHEET NO.
9128	28RS-7	MADISON	8	6
CONTRACT NO. 76M09				
ILLINOIS FED. AID PROJECT				



LOCATION MAP
NOT TO SCALE



NATIONAL TERRACE AND MESA DR.
MICROSURFACING SIDEROAD LIMITS

MODEL: Default
 FILE: \\nrcs-pis\ill08\B&E\ID\NTEC\Illinois\gov\PI\DOT\Documents\1\DOT_Offices\Director\B\Projects\0776M09\CADD\staCAD\chereis\0776M09-shc-detail.dgn

USER NAME = millerraj	DESIGNED -	REVISED -
	DRAWN -	REVISED -
PLOT SCALE = 100,0000' / in.	CHECKED -	REVISED -
PLOT DATE = 1/16/2019	DATE -	REVISED -

**STATE OF ILLINOIS
DEPARTMENT OF TRANSPORTATION**

DETAIL SHEET, LOCATION MAP

SCALE: NTS SHEET 1 OF 1 SHEETS STA. TO STA.

F.A.U. RTE.	SECTION	COUNTY	TOTAL SHEETS	SHEET NO.
9128	28RS-7	MADISON	8	8
ILLINOIS			FED. AID PROJECT	

CONTRACT NO. 76M09