

STATE OF ILLINOIS
DEPARTMENT OF TRANSPORTATION

F.A.P. RTE.	SECTION	COUNTY	TOTAL SHEETS	SHEET NO.
317	(19) SFY	IROQUOIS	6	1
ILLINOIS CONTRACT NO. 66J09				

INDEX OF SHEETS

- 1 COVER SHEET
- 2 GENERAL NOTES
- 3 SUMMARY OF QUANTITIES
- 4 TYPICAL SECTIONS
- 5 SCHEDULES
- 6 DETAILS

LIST OF ILLINOIS DOT HIGHWAY STANDARDS

000001-07	STANDARD SYMBOLS, ABBREVIATIONS AND PATTERNS
001006	DECIMAL OF AN INCH AND OF A FOOT
482001-02	HMA SHOULDER ADJACENT TO FLEXIBLE PAVEMENT
482006-03	HMA SHOULDER ADJACENT TO RIGID PAVEMENT
642006	SHOULDER RUMBLE STRIPS, 8 INCH
701006-05	OFF-ROAD OPERATIONS 2L, 2W, 15' (4.5 m) TO 24" (600 mm) FROM PAVEMENT EDGE
701311-03	LANE CLOSURE, 2L, 2W, MOVING OPERATIONS - DAY ONLY
701326-04	LANE CLOSURE, 2L, 2W, PAVEMENT WIDENING, FOR SPEEDS ≥ 45 MPH
701901-08	TRAFFIC CONTROL DEVICES

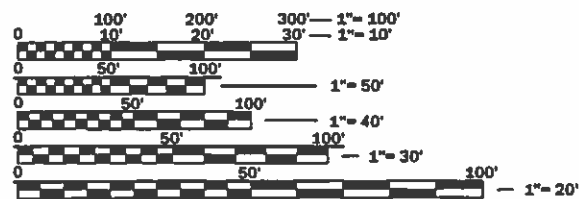
**PROPOSED
HIGHWAY PLANS**

FAP ROUTE 317 (US 24)
SECTION (19) SFY
PROJECT: HSIP - NXM7 (129)
SHOULDER WIDENING AND RUMBLE STRIPS
IROQUOIS COUNTY

C-93-054-18



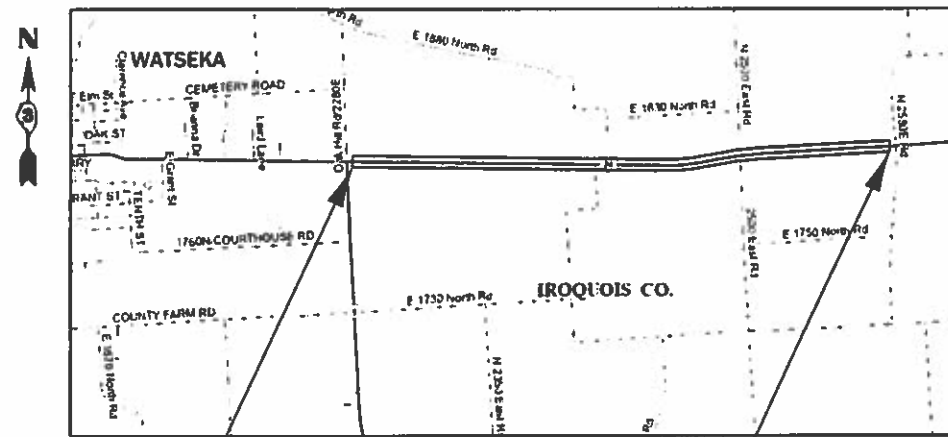
MINOR ARTERIAL
2017 ADT=4400
P.V.=86.9% S.U.=3.4% M.U.=9.7%



FULL SIZE PLANS HAVE BEEN PREPARED USING STANDARD ENGINEERING SCALES. REDUCED SIZED PLANS WILL NOT CONFORM TO STANDARD SCALES. IN MAKING MEASUREMENTS ON REDUCED PLANS, THE ABOVE SCALES MAY BE USED.

J.U.L.I.E.
JOINT UTILITY LOCATION INFORMATION FOR EXCAVATION
1-800-892-0123
OR 811

PROJECT ENGINEER: JOE KANNEL, P.E.
UNIT CHIEF: MARC BUDZYNSKI, P.E.
DISTRICT 3 NO. (815) 434-6131
CONTRACT NO. 66J09



PROJECT BEGINS
IL 1 (SOUTH LEG)
STA 2570+65

PROJECT ENDS
N 2580 E RD
STA 2731+45

GROSS LENGTH = 16,080 FT. = 3.05 MILES
NET LENGTH = 15,380 FT. = 2.91 MILES

STATE OF ILLINOIS
DEPARTMENT OF TRANSPORTATION

SUBMITTED 02/04 2019
[Signature]
REGIONAL ENGINEER

March 22, 2019
[Signature]
ENGINEER OF DESIGN AND ENVIRONMENT

March 22, 2019
[Signature]
DIRECTOR OF HIGHWAYS PROJECT IMPLEMENTATION

PRINTED BY THE AUTHORITY
OF THE STATE OF ILLINOIS

GENERAL NOTES

THE THICKNESS OF HMA SHOWN ON THE PLANS IS THE NOMINAL THICKNESS. DEVIATIONS FROM THE NOMINAL THICKNESS WILL BE PERMITTED WHEN SUCH DEVIATIONS OCCUR DUE TO IRREGULARITIES IN THE EXISTING SURFACE OR BASE ON WHICH THE HMA IS PLACED.

THE HMA SURFACE OF ALL MAILBOX TURNOUTS, PRIVATE ENTRANCES, COMMERCIAL ENTRANCES, AND SIDE ROADS SHALL BE MADE NEATLY, IN A WORKMANLIKE MANNER, AND SHALL ACCURATELY CONFORM TO THE SHAPES AND DIMENSIONS SHOWN ON THE PLAN DETAILS. IF REQUIRED BY THE ENGINEER, THE CONTRACTOR SHALL SAW CUT THE HMA SURFACE TO CONFORM TO THE SHAPES AND DIMENSIONS SHOWN ON THE PLAN DETAILS. THIS WORK WILL BE INCLUDED IN THE COST OF THE HMA SURFACE.

THE ENGINEER WILL BE THE SOLE JUDGE CONCERNING CURING TIME FOR THE VARIOUS HMA LIFTS.

FOR STABILIZATION, ALL TYPE III BARRICADES WILL REQUIRE A MINIMUM OF FOUR SAND BAGS PER BARRICADE.

ANY REFERENCE TO A STANDARD IN THESE PLANS SHALL BE INTERPRETED TO MEAN THE EDITION AS INDICATED BY THE SUBNUMBER SHOWN IN THE LIST OF STANDARDS OR THE COPY INCLUDED IN THESE PLANS.

THE FOLLOWING RATES OF APPLICATION HAVE BEEN USED IN CALCULATING PLAN QUANTITIES:

HMA RESURFACING	112	LBS / SQ YD / IN
-----------------	-----	------------------

ALL DAMAGE TO DEPARTMENT OWNED UNDERGROUND FACILITIES, CAUSED BY THE CONTRACTOR SHALL BE REPAIRED TO THE SATISFACTION OF THE DEPARTMENT AT THE CONTRACTOR'S EXPENSE. THIS SHALL INCLUDE ALL TEMPORARY REPAIRS REQUIRED TO KEEP THE FACILITY OPERATIONAL WHILE MATERIAL IS BEING OBTAINED TO MAKE PERMANENT REPAIRS. SPlicing OF ELECTRIC CABLE WILL NOT BE ALLOWED. ELECTRIC CABLE SHALL BE REPLACED FROM POLE TO POLE OR CONTROLLER.

THE CONTRACTOR SHALL CONTACT JULIE AT LEAST 48 HOURS PRIOR TO EXCAVATION TO DETERMINE WHICH UTILITIES ARE IN THE AREA.

THE NON-SPECIAL WASTE DISPOSAL QUANTITY ACCOUNTS FOR THE CUBIC YARDS OF DIRT THAT IS REMOVED AS A PART OF SHOULDER REMOVAL (SPECIAL). OTHER EXCAVATED SHOULDER MATERIALS WERE NOT INCLUDED IN THE NON-SPECIAL WASTE QUANTITY.

LOCATION(S):	ENTIRE PROJECT	ENTIRE PROJECT
MIXTURE USE(S):	SHOULDER BOTTOM LIFT(S)	SHOULDER TOP LIFT (2")
BINDER GRADE (PG):	PG 64-22	PG 64-22
DESIGN AIR VOIDS:	4.0% @ N50	4.0% @ N50
MIXTURE COMPOSITION: (MIXTURE GRADATION)	1L-19.0	1L-9.5 FG
FRICTION AGGREGATE:	-	-
MIXTURE WEIGHT:	112.0 LB/SY/IN	112.0 LB/SY/IN
QUALITY MANAGEMENT PROGRAM:	QC/QA	QC/QA
SUBLOT SIZE:	N/A	N/A
DENSITY TEST METHOD:	CORES	CORES

COMMITMENTS:

STATE OF ILLINOIS
DEPARTMENT OF TRANSPORTATION
DISTRICT THREE
AS BUILT INFORMATION

SUPERVISING CONSTRUCTION FIELD ENGINEER

RESIDENT ENGINEER / TECHNICIAN

START & END DATES
OF CONSTRUCTION:

INSPECTORS:

STATE OF ILLINOIS
DEPARTMENT OF TRANSPORTATION
DISTRICT THREE

PREPARED BY: *Don Beaulieu*
DISTRICT STUDIES & PLANS ENGINEER

DATE: 02/04/19

EXAMINED BY: *Kevin*
DISTRICT CONSTRUCTION ENGINEER

Michael Ash
DISTRICT MATERIALS ENGINEER

Sam Hagedorn
DISTRICT OPERATIONS ENGINEER

STATE OF ILLINOIS
DEPARTMENT OF TRANSPORTATION

GENERAL NOTES

SCALE: SHEET OF SHEETS STA. TO STA.

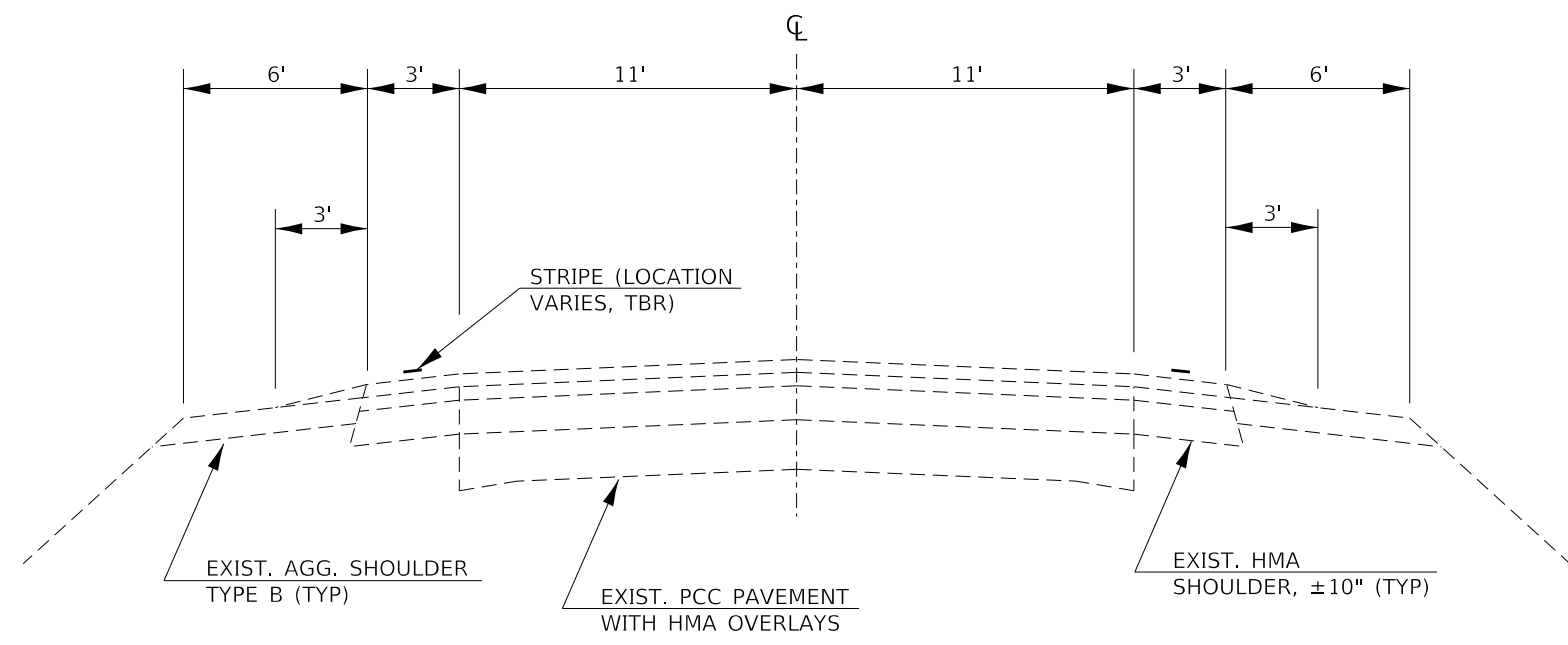
F.A.P. RTE.	SECTION	COUNTY	TOTAL SHEETS	SHEET NO.
317	(19) SFY	IROQUOIS	6	2
CONTRACT NO. 66J09				
ILLINOIS FED. AID PROJECT				

FILE NAME =	USER NAME = budzynskim	DESIGNED -	REVISED -
pwc:\IL084EBID\INTEG.Illinois.gov\PWIDOT\Documents\DOT Offices\District 3\Projects\1366J09\CADDData\1366J09-shf-cv.dwg		DRAWN -	REVISED -
Default	PLOT SCALE = 100.0000' / in.	CHECKED -	REVISED -
	PLOT DATE = 2/4/2019	DATE -	REVISED -

CODE NO.	ITEM	UNIT	TOTAL QUANTITY	CONSTR. CODE	
				90% FED 10% STATE	
				ROADWAY	
				0021	
				RURAL	
40600290	BITUMINOUS MATERIALS (TACK COAT)	POUND	4614		4614
48203029	HOT-MIX ASPHALT SHOULDERS, 8"	SQ YD	10253		10253
64200108	SHOULDER RUMBLE STRIPS,8 INCH	FOOT	30760		30760
* 66900200	NON-SPECIAL WASTE DISPOSAL	CU YD	220		220
* 66900530	SOIL DISPOSAL ANALYSIS	EACH	2		2
* 66901001	REGULATED SUBSTANCES PRE-CONSTRUCTION PLAN	L SUM	1.0		1.0
* 66901002	ON-SITE MONITORING OF REGULATED SUBSTANCES	CAL DA	3		3
* 66901003	REGULATED SUBSTANCES FINAL CONSTRUCTION REPORT	L SUM	1.0		1.0
67100100	MOBILIZATION	L SUM	1.0		1.0
70100500	TRAFFIC CONTROL AND PROTECTION, STANDARD 701326	L SUM	1.0		1.0
70103815	TRAFFIC CONTROL SURVEILLANCE	CAL DA	5		5
78001110	PAINT PAVEMENT MARKING - LINE4"	FOOT	64320		64320
X0327980	PAVEMENT MARKING REMOVAL - WATER BLASTING	SQ FT	10720		10720
X0800001	SHOULDER REMOVAL (SPECIAL)	SQ YD	10253		10253
Z0030850	TEMPORARY INFORMATION SIGNING	SQ FT	42		42

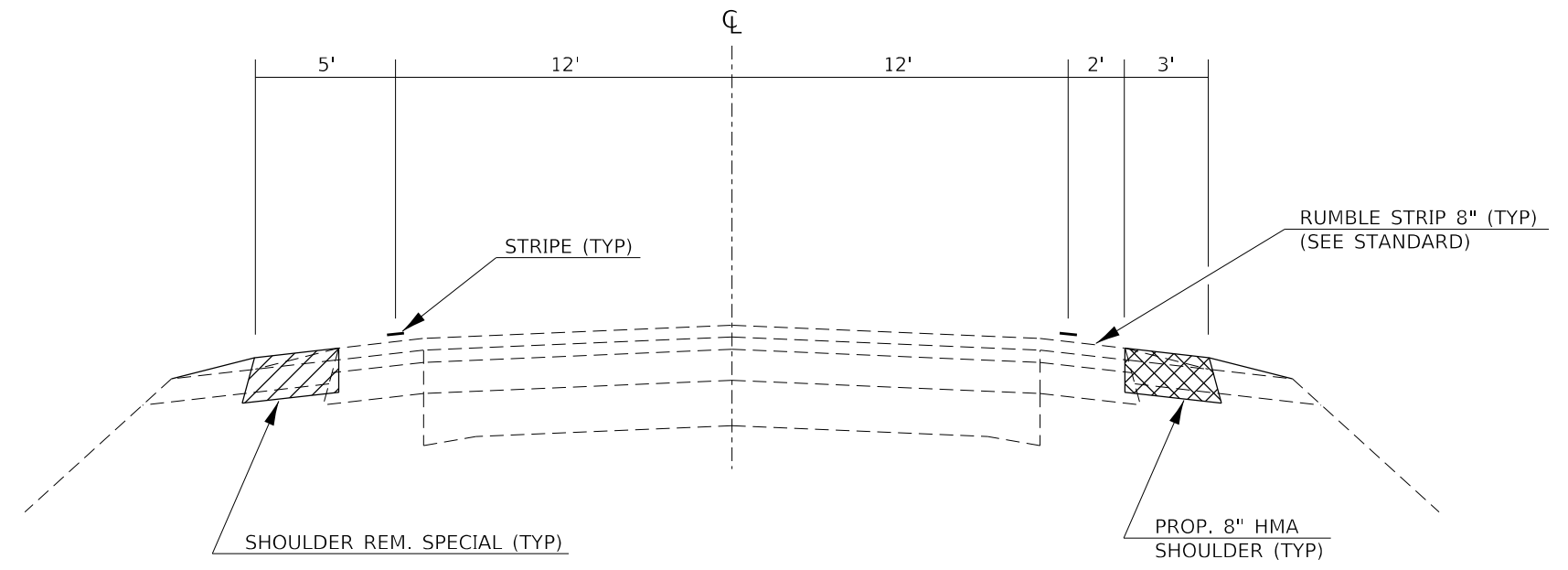
*= SPECIALTY ITEM

FILE NAME =	USER NAME = budzynsklm	DESIGNED - _____	REVISED - _____	STATE OF ILLINOIS DEPARTMENT OF TRANSPORTATION	SUMMARY OF QUANTITIES			F.A.P. RTE.	SECTION	COUNTY	TOTAL SHEETS	SHEET NO.
pw:\il084EBIDINTEG\ilnotes.gov\PWIDOT\Documents\DOT Office\District 3\Projects\D366J09\CADDData\D366J09-sh-cv	DRAWN - _____	REVISED - _____	317					(19) SFY	IROQUOIS	6	3	
Default	PLOT SCALE = 100.0000' / in.	CHECKED - _____	REVISED - _____		CONTRACT NO. 66J09			ILLINOIS FED. AID PROJECT				
	PLOT DATE = 2/4/2019	DATE - _____	REVISED - _____		SCALE: _____	SHEET _ OF _ SHEETS	STA. _____ TO STA. _____					



EXISTING TYPICAL SECTION

STA 2570+65 TO STA 2701+53
 STA 2708+53 TO STA 2731+45



PROPOSED TYPICAL SECTION

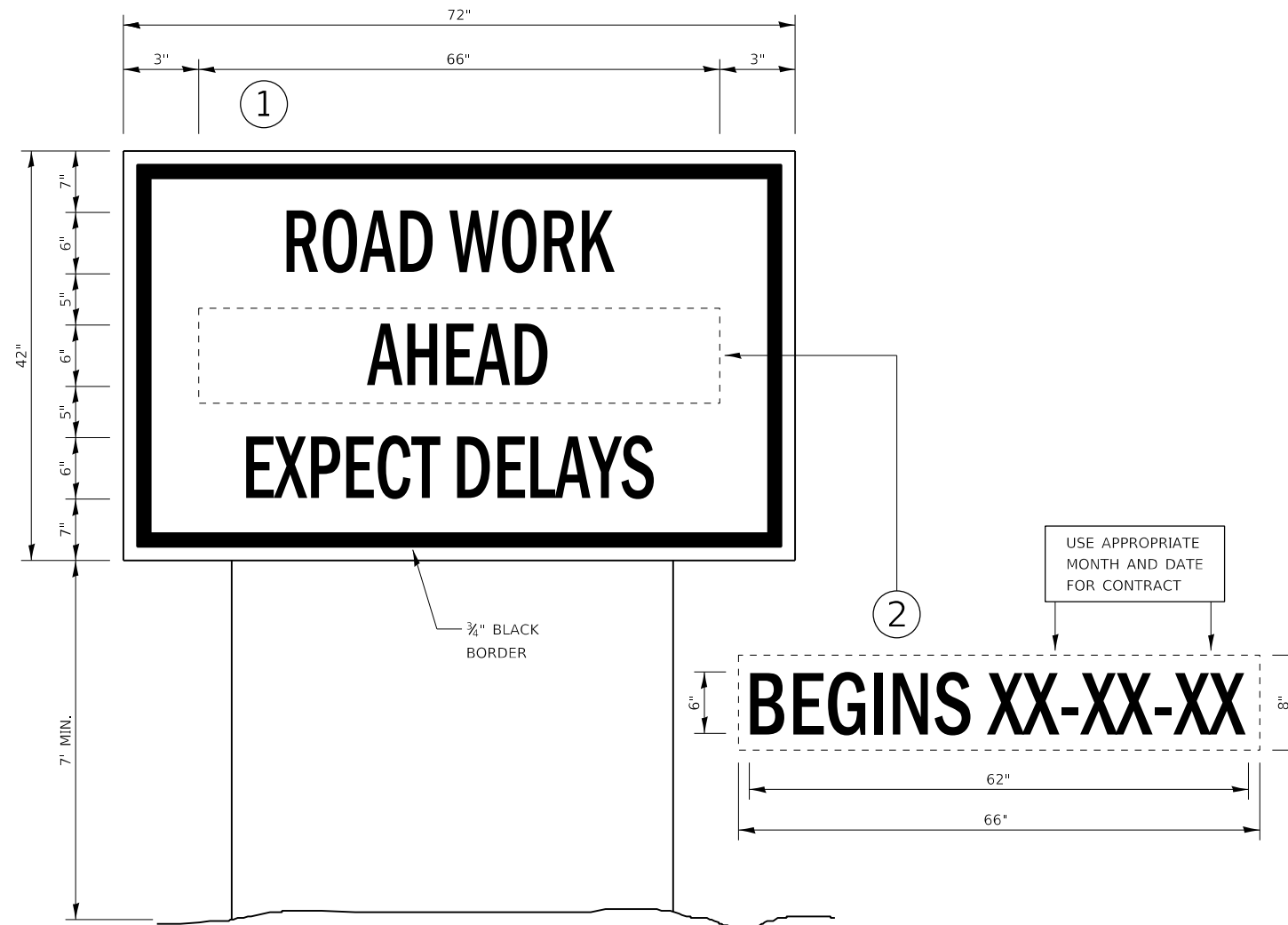
STA 2570+65 TO STA 2701+53
 STA 2708+53 TO STA 2731+45

FILE NAME =	USER NAME = budzynsklm	DESIGNED -	REVISED -	STATE OF ILLINOIS DEPARTMENT OF TRANSPORTATION	TYPICAL SECTIONS			F.A.P. RTE.	SECTION	COUNTY	TOTAL SHEETS	SHEET NO.
pw:\il084EBID\INTEG\Illnotes.gov\PWIDOT\Documents\DOT Office\District 3\Projects\D366J09\CADDData\D366J09-shd-cov	DRAWN -	REVISED -	REVISED -					317	(19) SFY	IROQUOIS	6	4
Default	PLOT SCALE = 100.0000' / in.	CHECKED -	REVISED -		CONTRACT NO. 66J09			ILLINOIS FED. AID PROJECT				
	PLOT DATE = 2/4/2019	DATE -	REVISED -		SCALE: _____	SHEET _____ OF _____ SHEETS	STA. _____ TO STA. _____					

SHOULDER REMOVAL & REPLACEMENT SCHEDULE										
LOCATION			SIDE	LENGTH	SHOULDER REMOVAL (SPECIAL)	HMA SHOULDERS 8"	BIT MTL S TACK COAT	SHOULDER RUMBLE STRIPS, 8"	PVMT MKING REM - WATER BLASTING	*PAINT PVMT MARKING WHITE 4"
STA	TO	STA	LT / RT	FOOT	SQ YD	SQ YD	POUND	FOOT	SQ FT	FOOT
2570+65	TO	2701+53	LT & RT	13088	8725	8725	3926	26176	8725	52352
BRIDGE OMISSION									467	2800
2708+53	TO	2731+45	LT & RT	2292	1528	1528	688	4584	1528	9168
TOTAL				15380	10253	10253	4614	30760	10720	64320

*QUANTITY REPRESENTS TWO SEPARATE APPLICATIONS

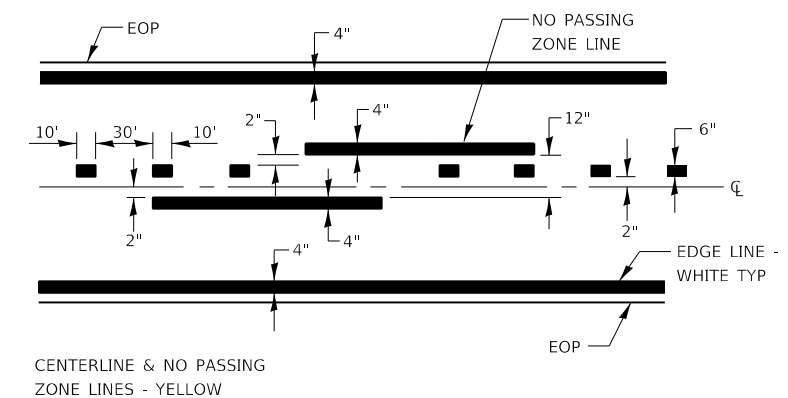
SURVEY MONUMENT SCHEDULE					
GPS NUMBER	DESCRIPTION	EXISTING MONUMENT TYPE	PROPOSED MONUMENT TYPE	MONUMENT RECORD TO BE RECORDED	RESPONSIBILITY
N/A	NO CENTERLINE CONTROL OR SECTION CORNER PERMANENT SURVEY MARKERS TO BE SET	N/A	N/A	N/A	N/A
<p>ALL KNOWN EXISTING PERMANENT SURVEY MARKERS AND SURVEY MONUMENTS ARE LOCATED ON THE ROAD SURFACE AND SHOULD NOT BE DISTURBED BY SHOULDER WIDENING AND RUMBLE STRIP WORK.</p> <p>UNKNOWN MONUMENTS MAY EXIST, AND IF FOUND THE R.E. MUST TIE AND REQUEST PLATS AND PLANS PERSONNEL TO ANALYZE AND GPS ANY MONUMENT SUBJECT TO DAMAGE OR DESTRUCTION FROM THE PROPOSED WORK, AND INFORM THEM TO RESET THESE MONUMENTS UPON JOB COMPLETION.</p> <p>THE R.E. IS TO INFORM THE PLATS AND PLANS SECTION TO SEARCH FOR ADDITIONAL MONUMENTS IF JOB LIMITS ARE EXPANDED DURING CONSTRUCTION.</p> <p>NO MONUMENT RECORDS WILL BE REQUIRED FOR THIS JOB.</p>					



TEMPORARY INFORMATION SIGNING

NOTES:

1. USE 6" D BLACK LETTERING ON FLUORESCENT ORANGE BACKGROUND.
2. ERECT SIGNS AT LOCATIONS IN ADVANCE OF THE "ROAD CONSTRUCTION AHEAD" SIGNS AS DIRECTED BY THE ENGINEER.
3. ERECT SIGN ① WITH INSTALLED PANEL ② A MINIMUM OF ONE WEEK PRIOR TO THE START OF THE LANE CLOSURE.
4. REMOVE PANEL ② ON THAT DATE.
5. SEE SPECIAL PROVISION "TEMPORARY INFORMATION SIGNING" FOR ADDITIONAL INFORMATION.
6. WILL BE PAID FOR PER SQ FT AS "TEMPORARY INFORMATION SIGNING". EACH SIGN = 21 SQ FT AND THE DATE PANEL ② WILL NOT BE MEASURED SEPARATELY FOR PAYMENT.



PAVEMENT MARKING

FILE NAME =	USER NAME = budzynsklm	DESIGNED -	REVISED -	STATE OF ILLINOIS DEPARTMENT OF TRANSPORTATION	DETAILS		F.A.P. RTE.	SECTION	COUNTY	TOTAL SHEETS	SHEET NO.
pw:\il\084EBID\INTEG\ilnotes.gov\PWIDOT\Documents\DOT\Office\District 3\Projects\D366J09\CADDData\D366J09-sh-cw	DRAWN -	REVISED -	317				(19) SFY	IROQUOIS	6	6	
Default	PLOT SCALE = 100.0000' / in.	CHECKED -	REVISED -		CONTRACT NO. 66J09			ILLINOIS	FED. AID PROJECT		
	PLOT DATE = 2/4/2019	DATE -	REVISED -		SCALE: _____	SHEET _____ OF _____ SHEETS	STA. _____ TO STA. _____				