

SUMMARY OF QUANTITIES			TOTAL QUANTITIES URBAN	CONSTRUCTION TYPE CODE				SUMMARY OF QUANTITIES			TOTAL QUANTITIES URBAN	CONSTRUCTION TYPE CODE				
CODE NO	ITEM	UNIT		0005 80% FED 20% STATE	0005 100% STATE	0021 80% FED 20% STATE TRAFFIC SIGNALS			CODE NO	ITEM		UNIT	0005 80% FED 20% STATE	0005 100% STATE	0021 80% FED 20% STATE TRAFFIC SIGNALS	
70300211	TEMPORARY PAVEMENT MARKING LETTERS AND SYMBOLS - PAINT	SO FT	404	404				* 78000500	THERMOPLASTIC PAVEMENT MARKING - LINE 8"	FOOT	318	318				
70300221	TEMPORARY PAVEMENT MARKING - LINE 4"- PAINT	FOOT	12067	12067				* 78000600	THERMOPLASTIC PAVEMENT MARKING - LINE 12"	FOOT	1504	1504				
70300241	TEMPORARY PAVEMENT MARKING - LINE 6"- PAINT	FOOT	2441	2441				* 78000650	THERMOPLASTIC PAVEMENT MARKING - LINE 24"	FOOT	685	685				
70300251	TEMPORARY PAVEMENT MARKING - LINE 8"- PAINT	FOOT	318	318				* 78100100	RAISED REFLECTIVE PAVEMENT MARKER	EACH	483	483				
70300261	TEMPORARY PAVEMENT MARKING - LINE 12"- PAINT	FOOT	1504	1504				78300200	RAISED REFLECTIVE PAVEMENT MARKER REMOVAL	EACH	365	365				
70300281	TEMPORARY PAVEMENT MARKING - LINE 24"- PAINT	FOOT	685	685				78300202	PAVEMENT MARKING REMOVAL - WATER BLASTING	SO FT	8733	8733				
70307120	TEMPORARY PAVEMENT MARKING - LINE 4" - TYPE IV TAPE	FOOT	8967	8967				* 81028200	UNDERGROUND CONDUIT, GALVANIZED STEEL, 2" DIA.	FOOT	238			238		
* 78000100	THERMOPLASTIC PAVEMENT MARKING - LETTERS AND SYMBOLS	SO FT	404	404				<del>* 81028220</del>	<del>UNDERGROUND CONDUIT, GALVANIZED STEEL, 3" DIA.</del>	<del>FOOT</del>	<del>79</del>			<del>79</del>		
* 78000200	THERMOPLASTIC PAVEMENT MARKING - LINE 4"	FOOT	12067	12067				* 81028240	UNDERGROUND CONDUIT, GALVANIZED STEEL, 4" DIA.	FOOT	245			245		
* 78000400	THERMOPLASTIC PAVEMENT MARKING - LINE 6"	FOOT	2441	2441				* 85000200	MAINTENANCE OF EXISTING TRAFFIC SIGNAL INSTALLATION	EACH	4			4		
								* 87300010	GROUNDING EXISTING HANDHOLE FRAME AND COVER	EACH	4			4		
								* 87301215	ELECTRIC CABLE IN CONDUIT, SIGNAL NO. 14 2C	FOOT	2442			2442		
								* 87301225	ELECTRIC CABLE IN CONDUIT, SIGNAL NO. 14 3C	FOOT	1786			1786		
* = SPECIALTY ITEMS																

FILE NAME =	USER NAME = AlanParayno	DESIGNED -	REVISED -
pw:\N\dot-pw\benfrey.com\PW\DOT\Documents\1007 - Office\District\Projects\DI1942\CAAD\Design\DI1942-st-500.dwg		DRAWN -	REVISED -
		CHECKED -	REVISED -
		DATE -	REVISED -

**STATE OF ILLINOIS  
DEPARTMENT OF TRANSPORTATION**

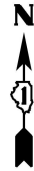
**CUMBERLAND AVE. ( BELLE PLAINE AVE. - I-90 /KENNEDY EXPWY )  
SUMMARY OF QUANTITIES**

F.A.U. RTE.	SECTION	COUNTY	TOTAL SHEETS	SHEET NO.
2746	2021-109-R5&SW	COOK	77	6
CONTRACT NO. 62P34				
FED. ROAD DIST. NO. 1   ILLINOIS   FED. AID PROJECT				

REVISÉ SHEET 4/11/2024

CODE NO	SUMMARY OF QUANTITIES ITEM	UNIT	TOTAL QUANTITIES	CONSTRUCTION TYPE CODE		
				0005 80% FED 20% STATE	0005 100% STATE	0021 80% FED 20% STATE TRAFFIC SIGNALS
			URBAN			
* 87301900	ELECTRIC CABLE IN CONDUIT, EQUIPMENT GROUNDING CONDUCTOR, NO. 6 1C	FOOT	979			979
87301245	ELECTRIC CABLE IN CONDUIT, SIGNAL NO.14 5C	FOOT	255			255
* 87900200	DRILL EXISTING HANDHOLE	EACH	20			20
87301805	ELECTRIC CABLE IN CONDUIT, SERVICE NO. 6 2C	FOOT	125			125
* 88102717	PEDESTRIAN SIGNAL HEAD, LED, 1-FACE, BRACKET MOUNTED WITH COUNTDOWN TIMER	EACH	6			6
87800100	CONCRETE FOUNDATION, TYPE A	FOOT	4			4
* 88600100	DETECTOR LOOP, TYPE I	FOOT	1818			1818
87800150	CONCRETE FOUNDATION, TYPE C	FOOT	4			4
* 89500200	RELOCATE EXISTING PEDESTRIAN SIGNAL HEAD	EACH	10			10
88500100	INDUCTIVE LOOP DETECTOR	EACH	2			2
<del>89502200</del>	<del>MODIFY EXISTING CONTROLLER</del>	<del>EACH</del>	<del>1</del>			<del>1</del>
89501250	RELOCATE EXISTING TRAFFIC SIGNAL EQUIPMENT	EACH	1			1
* 89502300	REMOVE ELECTRIC CABLE FROM CONDUIT	FOOT	1529			1529
* 89502350	REMOVE AND REINSTALL ELECTRIC CABLE FROM CONDUIT	FOOT	663			663
* 89502375	REMOVE EXISTING TRAFFIC SIGNAL EQUIPMENT	EACH	4			4
* 89502376	REBUILD EXISTING HANDHOLE	EACH	5			5
<del>89502382</del>	<del>REMOVE EXISTING DOUBLE HANDHOLE</del>	<del>EACH</del>	<del>1</del>			<del>1</del>
89502385	REMOVE EXISTING CONCRETE FOUNDATION	EACH	1			1
X0320050	CONSTRUCTION LAYOUT (SPECIAL)	L SUM	1	1		
X1400081	FULL-ACTUATED CONTROLLER AND TYPE SUPER CABINET (SPECIAL)	EACH	1			1
* X1400367	PEDESTRIAN SIGNAL POST, 10 FT.	EACH	10			10
X1400150	SERVICE INSTALLATION GROUND MOUNTED METERED	EACH	1			1

CODE NO	SUMMARY OF QUANTITIES ITEM	UNIT	TOTAL QUANTITIES	CONSTRUCTION TYPE CODE		
				0005 80% FED 20% STATE	0005 100% STATE	0021 80% FED 20% STATE TRAFFIC SIGNALS
			URBAN			
X4240800	DETECTABLE WARNINGS (SPECIAL)	SO FT	250	250		
X4400501	COMBINATION CURB AND GUTTER REMOVAL AND REPLACEMENT LESS THAN OR EQUAL TO 10 FEET	FOOT	212	212		
X4400503	COMBINATION CURB AND GUTTER REMOVAL AND REPLACEMENT GREATER THAN 10 FEET	FOOT	7550	7550		
X5537800	STORM SEWERS TO BE CLEANED 12"	FOOT	1815		1815	
X6030310	FRAMES AND LIDS TO BE ADJUSTED (SPECIAL)	EACH	72	72		
X6700407	ENGINEER'S FIELD OFFICE, TYPE A (D1)	CAL MO	12	12		
* X8760200	ACCESSIBLE PEDESTRIAN SIGNALS	EACH	34			34
* X8620200	UNINTERRUPTABLE POWER SUPPLY (SPECIAL)	EACH	1			1
* X8780012	CONCRETE FOUNDATION, TYPE A 12-INCH DIAMETER	FOOT	40			40
<del>X8950205</del>	<del>REBUILD EXISTING HANDHOLE (SPECIAL)</del>	<del>EACH</del>	<del>1</del>			<del>1</del>
Z0018500	DRAINAGE STRUCTURES TO BE CLEANED	EACH	121		121	
Z0030850	TEMPORARY INFORMATION SIGNING	SO FT	228	228		
* Z0033044	RE-OPTIMIZE TRAFFIC SIGNAL SYSTEM LEVEL 1	EACH	1			1



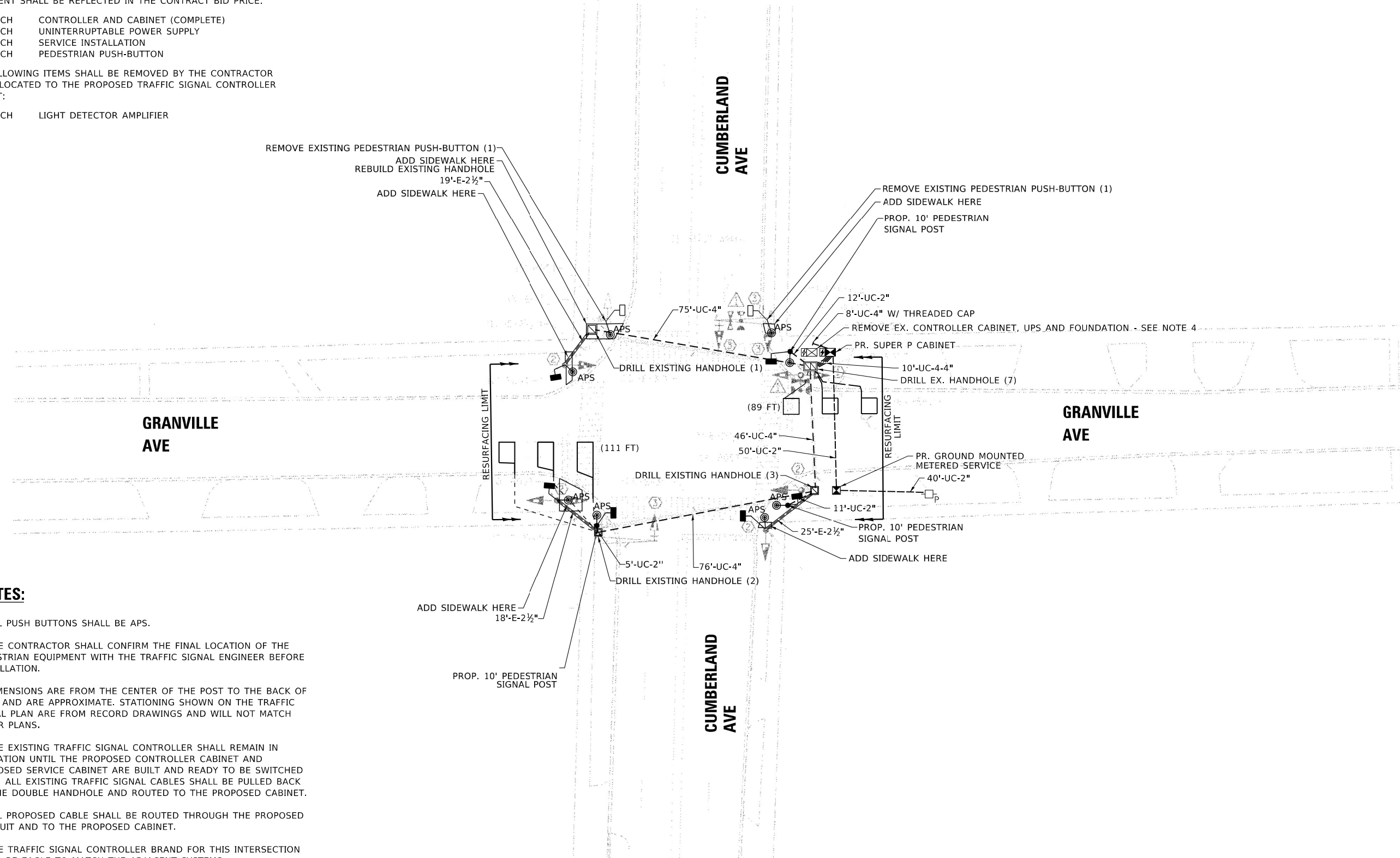
### REMOVAL AND RELOCATION NOTES:

THE FOLLOWING ITEMS SHALL BE REMOVED BY THE CONTRACTOR AND SHALL BE DISPOSED OF BY THEM OUTSIDE THE RIGHT-OF-WAY AT THEIR EXPENSE. THE SALVAGE VALUE OF THE REMOVED EQUIPMENT SHALL BE REFLECTED IN THE CONTRACT BID PRICE.

- 1 EACH CONTROLLER AND CABINET (COMPLETE)
- 1 EACH UNINTERRUPTABLE POWER SUPPLY
- 1 EACH SERVICE INSTALLATION
- 2 EACH PEDESTRIAN PUSH-BUTTON

THE FOLLOWING ITEMS SHALL BE REMOVED BY THE CONTRACTOR AND RELOCATED TO THE PROPOSED TRAFFIC SIGNAL CONTROLLER CABINET:

- 1 EACH LIGHT DETECTOR AMPLIFIER



### NOTES:

1. ALL PUSH BUTTONS SHALL BE APS.
2. THE CONTRACTOR SHALL CONFIRM THE FINAL LOCATION OF THE PEDESTRIAN EQUIPMENT WITH THE TRAFFIC SIGNAL ENGINEER BEFORE INSTALLATION.
3. DIMENSIONS ARE FROM THE CENTER OF THE POST TO THE BACK OF CURB AND ARE APPROXIMATE. STATIONING SHOWN ON THE TRAFFIC SIGNAL PLAN ARE FROM RECORD DRAWINGS AND WILL NOT MATCH OTHER PLANS.
4. THE EXISTING TRAFFIC SIGNAL CONTROLLER SHALL REMAIN IN OPERATION UNTIL THE PROPOSED CONTROLLER CABINET AND PROPOSED SERVICE CABINET ARE BUILT AND READY TO BE SWITCHED OVER. ALL EXISTING TRAFFIC SIGNAL CABLES SHALL BE PULLED BACK TO THE DOUBLE HANDHOLE AND ROUTED TO THE PROPOSED CABINET.
5. ALL PROPOSED CABLE SHALL BE ROUTED THROUGH THE PROPOSED CONDUIT AND TO THE PROPOSED CABINET.
6. THE TRAFFIC SIGNAL CONTROLLER BRAND FOR THIS INTERSECTION SHALL BE EAGLE TO MATCH THE ADJACENT SYSTEMS.
7. THE ENTIRE TRAFFIC SIGNAL SYSTEM SHALL BE GROUNDED INCLUDING BUT NOT LIMITED TO POSTS, MAST ARMS, HANDHOLES, CONTROLLER CABINET, AND SERVICE CABINET.

TS SHT NO. 14

MODEL: Default  
FILE NAME: SignalDesign\AV\Plan\_Reviews\62P34 - Prefinal Plans\_Special\_Provisions\62P34.dgn

1 REVISED ENTIRE SHEET 4/12/2024

TS 9180

USER NAME = Andrea.Vargas	DESIGNED - MM	REVISED - 4/10/2024
DRAWN - MM	REVISIONS -	
PLOT SCALE = 40.0000' / in.	CHECKED - EC	REVISED -
PLOT DATE = 1/26/2024	DATE - 9/15/2022	REVISED -

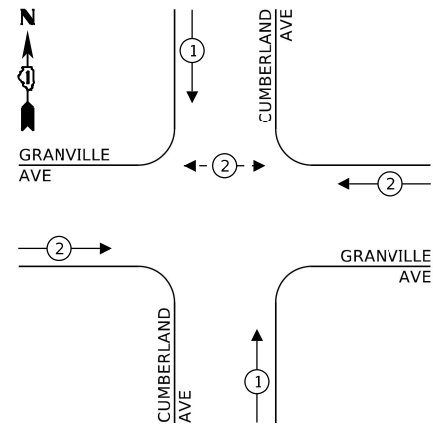
STATE OF ILLINOIS  
DEPARTMENT OF TRANSPORTATION

TRAFFIC SIGNAL MODIFICATION PLAN  
CUMBERLAND AVE AT GRANVILLE AVE

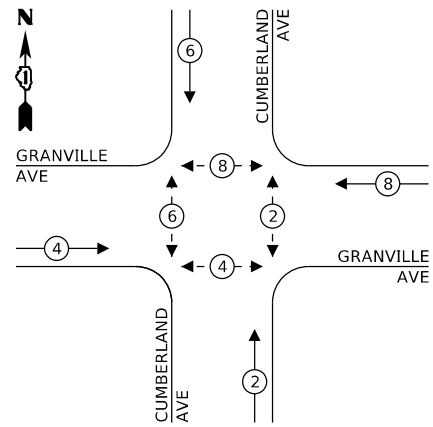
SCALE: SHEET OF SHEETS STA. TO STA.

RTE./PROJ.	SECTION	COUNTY	TOTAL SHEETS	SHEET NO.
2746	2021-109-R5&SW	COOK	77	55
CONTRACT NO. 62P34			ILLINOIS FED. AID PROJECT	

**EXISTING CONTROLLER SEQUENCE**



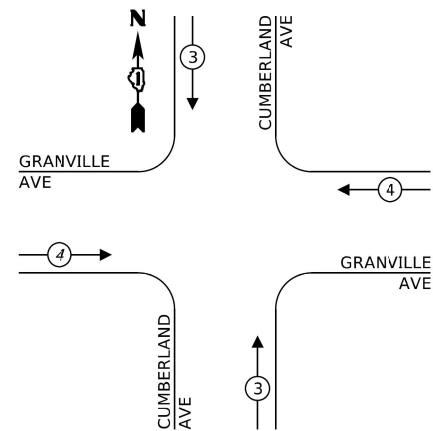
**PROPOSED CONTROLLER SEQUENCE**



**LEGEND:**

- ← (⊙) ← PROTECTED PHASE
- ← (⊙) ← PROTECTED/PERMITTED PHASE
- ← (⊙) → PEDESTRIAN PHASE

**EXISTING EMERGENCY VEHICLE PREEMPTION SEQUENCE**



**SCHEDULE OF QUANTITIES**

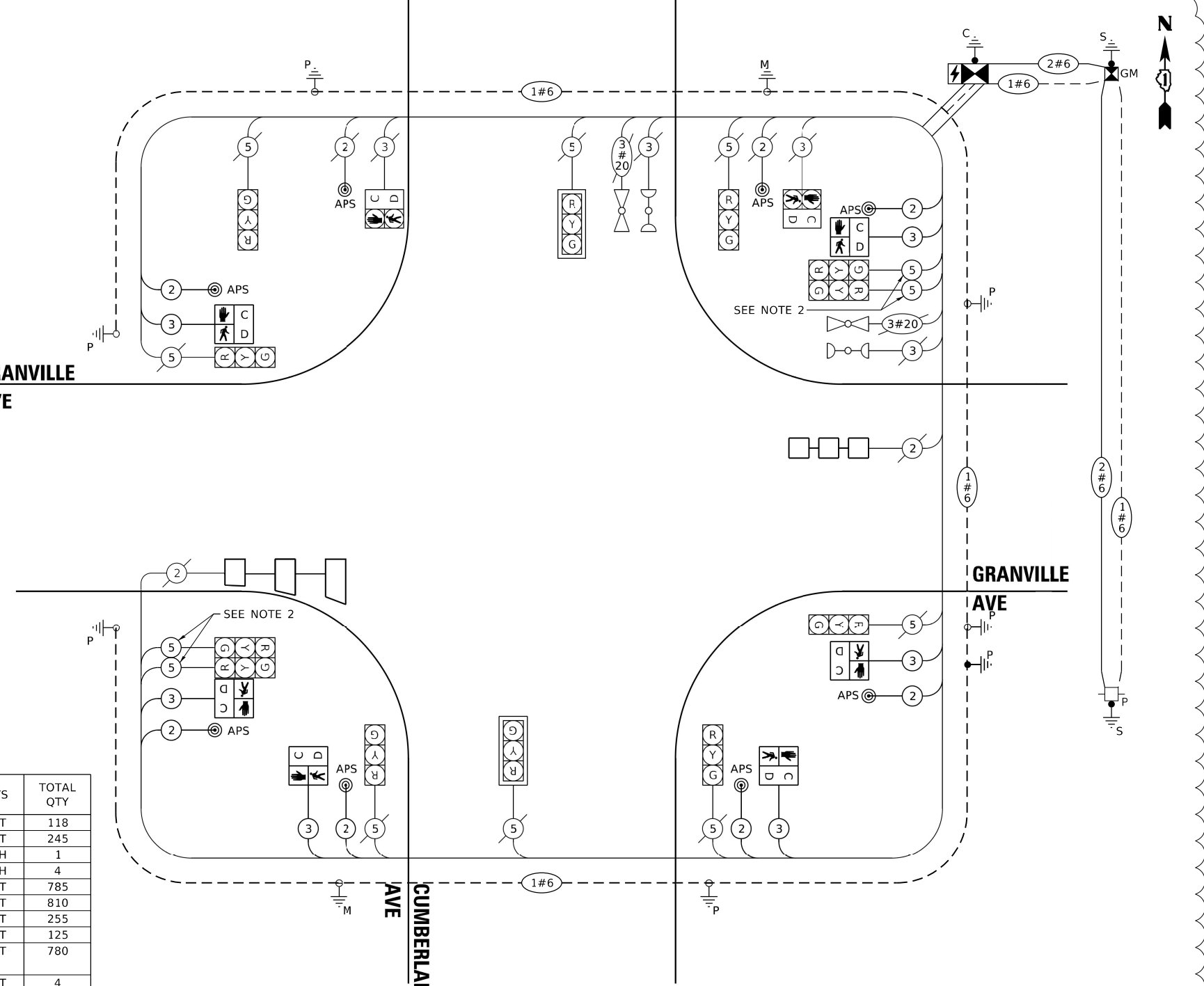
ITEM DESCRIPTION	UNITS	TOTAL QTY
UNDERGROUND CONDUIT, GALVANIZED STEEL, 2" DIA.	FOOT	118
UNDERGROUND CONDUIT, GALVANIZED STEEL, 4" DIA.	FOOT	245
MAINTENANCE OF EXISTING TRAFFIC SIGNAL INSTALLATION	EACH	1
GROUNDING EXISTING HANDHOLE FRAME AND COVER	EACH	4
ELECTRIC CABLE IN CONDUIT, SIGNAL NO. 14 2C	FOOT	785
ELECTRIC CABLE IN CONDUIT, SIGNAL NO. 14 3C	FOOT	810
ELECTRIC CABLE IN CONDUIT, SIGNAL NO. 14 5C	FOOT	255
ELECTRIC CABLE IN CONDUIT, SERVICE, NO. 6 2 C	FOOT	125
ELECTRIC CABLE IN CONDUIT, EQUIPMENT GROUNDING CONDUCTOR, NO. 6 1C	FOOT	780
CONCRETE FOUNDATION, TYPE A	FOOT	4
CONCRETE FOUNDATION, TYPE C	FOOT	4
DRILL EXISTING HANDHOLE	EACH	13
PEDESTRIAN SIGNAL HEAD, LED, 1-FACE, BRACKET MOUNTED WITH COUNTDOWN TIMER	EACH	6
INDUCTIVE LOOP DETECTOR	EACH	2
DETECTOR LOOP, TYPE I	FOOT	200
REMOVE ELECTRIC CABLE FROM CONDUIT	FOOT	130
RELOCATE EXISTING TRAFFIC SIGNAL EQUIPMENT	EACH	1
REMOVE AND REINSTALL ELECTRIC CABLE FROM CONDUIT	FOOT	300
REMOVE EXISTING TRAFFIC SIGNAL EQUIPMENT	EACH	1
REBUILD EXISTING HANDHOLE	EACH	1
REMOVE EXISTING CONCRETE FOUNDATION	EACH	1
FULL-ACTUATED CONTROLLER AND TYPE SUPER P CABINET (SPECIAL)	EACH	1
SERVICE INSTALLATION, GROUND MOUNTED, METERED	EACH	1
PEDESTRIAN SIGNAL POST, 10 FT.	EACH	3
UNINTERRUPTABLE POWER SUPPLY (SPECIAL)	EACH	1
ACCESSIBLE PEDESTRIAN SIGNALS	EACH	8
CONCRETE FOUNDATION, TYPE A 12-INCH DIAMETER	FOOT	12
RE-OPTIMIZE TRAFFIC SIGNAL SYSTEM LEVEL 1	EACH	1

**GRANVILLE AVE**

**CUMBERLAND AVE**

**GRANVILLE AVE**

**CABLE PLAN**  
(NOT TO SCALE)



**NOTES:**

1. THE TRAFFIC SIGNAL CONTROLLER BRAND FOR THIS INTERSECTION SHALL BE EAGLE TO MATCH THE ADJACENT SYSTEMS.
2. REMOVE SHARED CABLE AND INSTALL TWO NEW SEPARATE 5C CABLES AS SHOWN.

**TRAFFIC SIGNAL ELECTRICAL SERVICE REQUIREMENTS**

TYPE	NO. OF LAMPS	LED WATTAGE	% OPERATION	TOTAL WATTAGE
SIGNAL (RED)	12	11	50	66.0
(YELLOW)	12	20	5	12
(GREEN)	12	12	45	64.8
PERMISSIVE ARROW	0	10	10	0
PED. SIGNAL	2	20	100	40.0
CONTROLLER	1	100	100	100.0
UPS	1	25	100	25.0
VIDEO SYSTEM	-	150	100	-
BLANK-OUT SIGN	-	25	5	-
FLASHER	-	-	50	-
STREET NAME SIGN	-	120	50	-
LUMINAIRE	-	-	-	-
<b>TOTAL =</b>				<b>307.8</b>

ENERGY COSTS TO:

**CITY OF PARK RIDGE**  
505 BUTLER PLACE  
PARK RIDGE, IL 60068

ENERGY SUPPLY: CONTACT: NEW BUSSINESS DEPT.  
PHONE: 866-639-3532  
COMPANY: ComEd

ACCOUNT NUMBER:

USER NAME = Andrea.Vargss	DESIGNED - MM	REVISED - 4/10/2024
PLOT SCALE = 40.0000" / in.	DRAWN - MM	REVISED - .....
PLOT DATE = 1/25/2024	CHECKED - EC	REVISED - .....
	DATE - 9/15/2022	REVISED - .....

**STATE OF ILLINOIS**  
**DEPARTMENT OF TRANSPORTATION**

**CABLE PLAN, PHASE DESIGNATION DIAGRAM, EMERGENCY VEHICLE PREEMPTION SEQUENCE, AND SCHEDULE OF QUANTITIES**  
**CUMBERLAND AVE AT GRANVILLE AVE**

SCALE: SHEET OF SHEETS STA. TO STA.

FAU	SECTION	COUNTY	TOTAL SHEETS	SHEET NO.
2746	2021-109-RS&SW	COOK	77	56
CONTRACT NO. 62P34				
ILLINOIS' FED. AID PROJECT				

REVISED ENTIRE SHEET 4/12/2024 **TS 9180**

TS SHT NO. 15

MODEL: Definit FILE NAME: S:\P\Design\AV\Plan\_Reviews\62P34 - Prelim - Plans\_Special\_Provide\62P34.dgn