

STATE OF ILLINOIS
DEPARTMENT OF TRANSPORTATION

F.A. RTE.	SECTION	COUNTY	TOTAL SHEETS	SHEET NO.
	2023 LS YARD PARKING	COOK	15	1
		ILLINOIS	CONTRACT NO. 62W01	

FOR INDEX OF SHEETS, SEE SHEET NO. 2

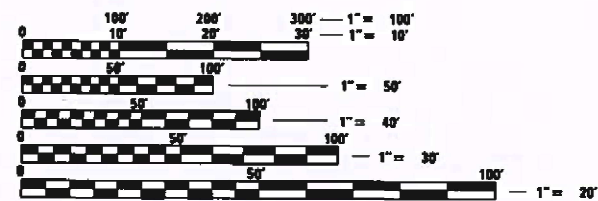
IMPROVEMENT IS LOCATED IN:
THE CITY OF CHICAGO

PROPOSED
HIGHWAY PLANS

MS 3100B AUGUSTA BOULEVARD
LANDSCAPE MAINTENANCE YARD (1260 AUGUSTA BLVD)
SECTION: 2023 LS YARD PARKING
PARKING LOT IMPROVEMENT
COOK COUNTY

C-91-087-24

D-91-078-24

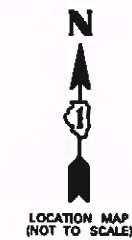
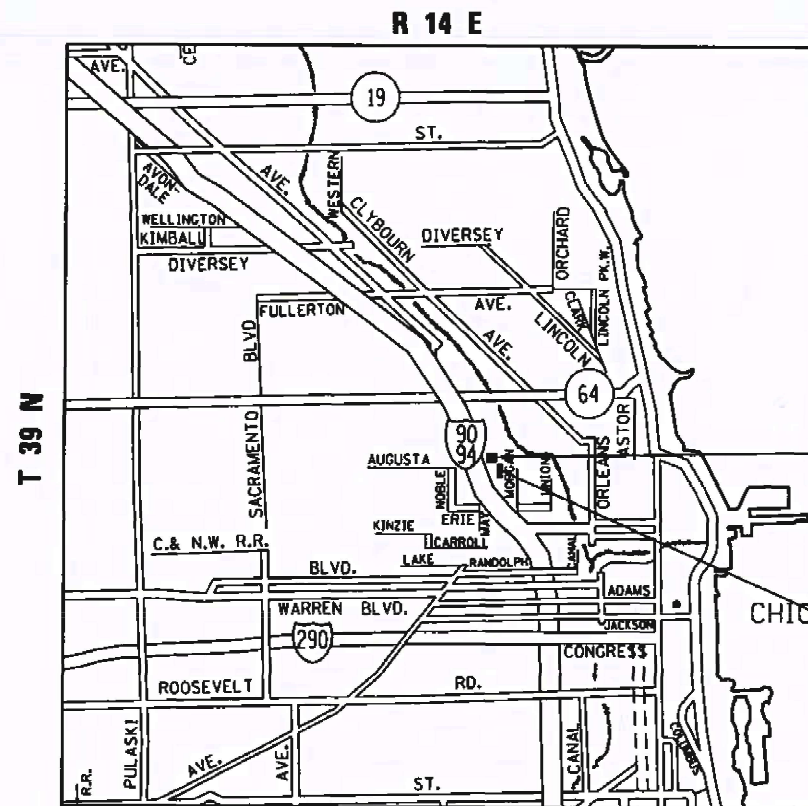


FULL SIZE PLANS HAVE BEEN PREPARED USING STANDARD ENGINEERING SCALES. REDUCED SIZED PLANS WILL NOT CONFORM TO STANDARD SCALES. IN MAKING MEASUREMENTS ON REDUCED PLANS, THE ABOVE SCALES MAY BE USED.

J.U.L.I.E.
JOINT UTILITY LOCATION INFORMATION FOR EXCAVATORS
1-800-892-0123
OR 811

PROJECT ENGINEER: DAN WILGREEN (847) 705-4240
PROJECT MANAGER: FAWAD AQUEEL

CONTRACT NO. 62W01



LANDSCAPE MAINTENANCE
YARD IMPROVEMENT
LOCATION #1

LANDSCAPE MAINTENANCE
YARD IMPROVEMENT
LOCATION #2

STATE OF ILLINOIS
DEPARTMENT OF TRANSPORTATION

SUBMITTED Feb 9 2024
Jack Rios REGIONAL ENGINEER

March 22, 2024 *John A. Etk*
ENGINEER OF DESIGN AND ENVIRONMENT

March 22, 2024 *Stephen M. Smith*
DIRECTOR OF HIGHWAYS PROJECT IMPLEMENTATION

PRINTED BY THE AUTHORITY
OF THE STATE OF ILLINOIS

WEST CHICAGO CITY TOWNSHIP

INDEX OF SHEETS

SHEET NO.	DESCRIPTION
1	COVER SHEET
2	INDEX OF SHEETS, STATE STANDARDS, GENERAL NOTES & HMA MIXTURE REQUIREMENTS
3	GENERAL LOCATION MAP
4-5	SUMMARY OF QUANTITIES
6	TYPICAL SECTIONS
7-8	EXISTING SITE PLAN
9-10	PROPOSED SITE PLAN
11-12	PROPOSED GRADING PLAN
13	PROPOSED PAVEMENT PLAN
14	DRIVEWAY DETAILS - DISTANCE BETWEEN R.O.W. AND FACE OF CURB & EDGE OF SHOULDER >= 15' (4.5 M) (BD-01)
15	DISTRICT ONE TYPICAL PAVEMENT MARKINGS (TC-13)

STATE STANDARDS

STANDARD NO.	DESCRIPTION
000001-08	TYPICAL SYMBOLS, ABBREVIATIONS AND PATTERNS
604001-05	FRAME AND LIDS 1
606001-08	CONCRETE CURB TYPE B AND COMBINATION CONCRETE CURB AND GUTTER
701001-02	OFF-RD OPERATIONS, 2L, 2W, MORE THAN 15' (4.5 m) AWAY
701006-05	OFF-RD OPERATIONS, 2L, 2W, 15' (4.5 m) TO 24" (600 mm) FROM PAVEMENT EDGE
701301-04	LANE CLOSURE, 2L, 2W, SHORT TIME OPERATIONS
701501-06	URBAN LANE CLOSURE, 2L,2W, UNDIVIDED
701901-09	TRAFFIC CONTROL DEVICES
729001-01	APPLICATIONS OF TYPES A & B METAL POSTS FOR SIGNS AND MARKERS)

GENERAL NOTES

1. THE CONTRACTOR WILL NOT BE ALLOWED TO SET UP A YARD OR FIELD OFFICE ON STATE PROPERTY WITHOUT WRITTEN PERMISSION FROM THE DEPARTMENT.
2. LOCATION OF COMBINATION CONCRETE CURB AND GUTTER REMOVAL AND REPLACEMENT [OR COMBINATION CURB AND GUTTER (THE TYPE SPECIFIED ON THE PLANS)], WILL BE DETERMINED IN THE FIELD BY THE ENGINEER.
2. THE CONTRACTOR SHALL COORDINATE CONSTRUCTION ACTIVITIES WITH THE LANDSCAPE MAINTENANCE YARD TEAM SECTION TECHNICIAN JEROME BEANE AT 773-486-1957 OR 1958 OR AT JEROME.BEANE@ILLINOIS.GOV
4. IT SHALL BE THE CONTRACTOR'S RESPONSIBILITY TO VERIFY ALL DIMENSIONS AND CONDITIONS EXISTING IN THE FIELD PRIOR TO CONSTRUCTION AND ORDERING OF MATERIALS.
5. FRAMES AND GRATES ADJUSTMENT OF PRIVATE UTILITIES WITHIN THE LIMITS OF THE IMPROVEMENTS SHALL BE DONE BY THEIR RESPECTIVE OWNERS AND ARE NOT PART OF THIS CONTRACT
6. EXISTING BROKEN FRAMES AND LIDS SHALL BE REMOVED AND DISPOSED OF BY THE CONTRACTOR AND SHALL BE REPLACED AS DIRECTED BY THE ENGINEER. REPLACEMENT FRAMES AND LIDS WILL BE PAID FOR ACCORDING TO ARTICLE 109.04 OF THE STANDARD SPECIFICATIONS UNLESS A SEPARATE PAY ITEM HAS BEEN PROVIDED.
7. THE RE MUST CONTACT THE LANDSCAPE MAINTENANCE YARD TEAM SECTION TECHNICIAN JEROME BEANE AT 773-486-1957 OR 1958 OR AT JEROME.BEANE@ILLINOIS.GOV TO RELOCATE ANY EXISTING ITEMS PRESENT AT THE CONSTRUCTION LOCATION.
8. THE CONTRACTOR SHALL USE CARE IN GRADING OR EXCAVATING NEAR ANY AND ALL EXISTING ITEMS THAT WILL NOT BE REMOVED INCLUDING PREVIOUSLY SEEDED AREAS. ANY DAMAGE DONE TO EXISTING ITEMS BY THE CONTRACTOR SHALL BE REPAIRED AT THE CONTRACTOR'S OWN EXPENSE TO THE SATISFACTION OF THE ENGINEER.
9. ANY LOOSE MATERIAL DEPOSITED IN THE FLOW LINE OF CURB OR DRAINAGE STRUCTURES, WHICH OBSTRUCTS THE NATURAL FLOW OF WATER, SHALL BE REMOVED AT THE CLOSE OF EACH WORKING DAY. PRIOR TO ACCEPTANCE OF THE IMPROVEMENT, ALL DRAINAGE STRUCTURES SHALL BE FREE OF DIRT AND DEBRIS. THIS WORK WILL NOT BE PAID FOR SEPARATELY BUT SHALL BE CONSIDERED AS INCIDENTAL.

MODEL NUMBER: INDEX OF SHEETS
FILE NAME: INDEX OF SHEETS

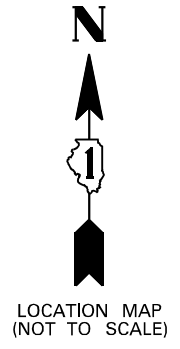
USER NAME = \$USERS	DESIGNED -	REVISED -
	DRAWN -	REVISED -
PLOT SCALE = \$SCALES	CHECKED -	REVISED -
PLOT DATE = \$DATES	DATE -	REVISED -

**STATE OF ILLINOIS
DEPARTMENT OF TRANSPORTATION**

**LANDSCAPE MAINTENANCE YARD (AUGUSTA BLVD) INDEX OF SHEETS,
STATE STANDARDS, GENERAL NOTES & HMA MIXTURE REQUIREMENTS**

SCALE: SHEET 1 OF 1 SHEETS STA. TO STA.

F.A. RTE.	SECTION	COUNTY	TOTAL SHEETS	SHEET NO.
	2023 LS YARD PARKING	COOK	15	2
			CONTRACT NO. 62W01	
			ILLINOIS FED. AID PROJECT	



**LANDSCAPE MAINTENANCE
YARD IMPROVEMENT
LOCATION #1**

**LANDSCAPE MAINTENANCE
YARD IMPROVEMENT
LOCATION #2**

MODEL: Default
 FILE: M:\MFC_Plan\Subcontract-beadefy.com\FW\DOT Documents\DOT Office\District 11\Project\ID:07324\IC\00\00\00\00\07324-sub-cover.dgn

USER NAME = Rana,Kalo	DESIGNED -	REVISED -
	DRAWN -	REVISED -
PLOT SCALE = 100,0000' / in.	CHECKED -	REVISED -
PLOT DATE = 2/9/2024	DATE -	REVISED -

**STATE OF ILLINOIS
DEPARTMENT OF TRANSPORTATION**

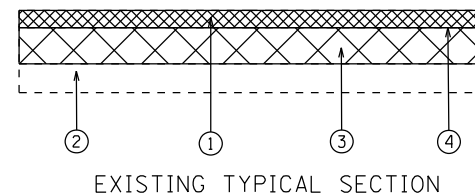
LANDSCAPE MAINTENANCE YARD (AUGUSTA BLVD)			
GENERAL LOCATION MAP			
SCALE:	SHEET 1	OF 1 SHEETS	STA. TO STA.

F.A. RTE.	SECTION	COUNTY	TOTAL SHEETS	SHEET NO.
	2023 LS YARD PARKING	COOK	15	3
CONTRACT NO. 62W01				
ILLINOIS FED. AID PROJECT				

SUMMARY OF QUANTITIES				CONSTRUCTION TYPE CODE					SUMMARY OF QUANTITIES				CONSTRUCTION TYPE CODE				
CODE NO	ITEM	UNIT	TOTAL QUANTITIES	100% STATE 0044					CODE NO	ITEM	UNIT	TOTAL QUANTITIES	100% STATE 0044				
20200100	EARTH EXCAVATION	CU YD	1596	1596					44000500	COMBINATION CURB AND GUTTER REMOVAL	FOOT	10	10				
21101615	TOPSOIL FURNISH AND PLACE, 4"	SO YD	162	162					60250200	CATCH BASINS TO BE ADJUSTED	EACH	3	3				
25200110	SODDING, SALT TOLERANT	SO YD	162	162					60603800	COMBINATION CONCRETE CURB AND GUTTER, TYPE B-6.12	FOOT	837	837				
25200200	SUPPLEMENTAL WATERING	UNIT	21.7	21.7					66400505	CHAIN LINK FENCE, 8'	FOOT	135	135				
28000510	INLET FILTERS	EACH	5	5					* 66900200	NON-SPECIAL WASTE DISPOSAL	CU YD	1596	1596				
31101400	SUBBASE GRANULAR MATERIAL, TYPE B 6"	SO YD	7181	7181					* 66900530	SOIL DISPOSAL ANALYSIS	EACH	4	4				
40600275	BITUMINOUS MATERIALS (PRIME COAT)	POUND	15388	15388					* 66901001	REGULATED SUBSTANCES PRE-CONSTRUCTION PLAN	L SUM	1	1				
40600290	BITUMINOUS MATERIALS (TACK COAT)	POUND	1539	1539					* 66901003	REGULATED SUBSTANCES FINAL CONSTRUCTION REPORT	L SUM	1	1				
40603085	HOT-MIX ASPHALT BINDER COURSE, IL-19.0, N70	TON	1149	1149					* 66901006	REGULATED SUBSTANCES MONITORING	CAL DA	10	10				
40604062	HOT-MIX ASPHALT SURFACE COURSE, IL-9.5, MIX "D", N70	TON	575	575					67100100	MOBILIZATION	L SUM	1	1				
42001300	PROTECTIVE COAT	SO YD	321	321					70102620	TRAFFIC CONTROL AND PROTECTION, STANDARD 701501	L SUM	1	1				
42300600	PORTLAND CEMENT CONCRETE DRIVEWAY PAVEMENT, 10 INCH	SO YD	312	312					* 72000100	SIGN PANEL - TYPE 1	SO FT	2	2				
44000100	PAVEMENT REMOVAL	SO YD	7181	7181					* 72900100	METAL POST - TYPE A	FOOT	11	11				
44000300	CURB REMOVAL	FOOT	734	734													
	* SPECIALTY ITEMS																

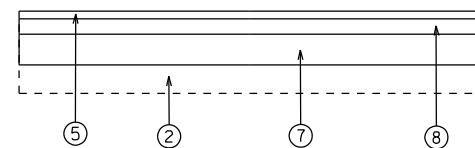
SUMMARY OF QUANTITIES				CONSTRUCTION TYPE CODE					SUMMARY OF QUANTITIES				CONSTRUCTION TYPE CODE				
CODE NO	ITEM	UNIT	TOTAL QUANTITIES	100% STATE					CODE NO	ITEM	UNIT	TOTAL QUANTITIES	100% STATE				
				0044									0044				
* 78000100	THERMOPLASTIC PAVEMENT MARKING - LETTERS AND SYMBOLS	SO FT	5	5													
* 78000200	THERMOPLASTIC PAVEMENT MARKING - LINE 4"	FOOT	143	143													
X4400501	COMBINATION CURB AND GUTTER REMOVAL AND REPLACEMENT LESS THAN OR EQUAL TO 10 FEET	FOOT	40	40													
X4400503	COMBINATION CURB AND GUTTER REMOVAL AND REPLACEMENT GREATER THAN 10 FEET	FOOT	20	20													
X5537800	STORM SEWERS TO BE CLEANED 12"	FOOT	100	100													
X6640300	CHAIN LINK FENCE REMOVAL	FOOT	135	135													
X6700407	ENGINEER'S FIELD OFFICE, TYPE A (D1)	CAL MO	6	6													
Z0013798	CONSTRUCTION LAYOUT	L SUM	1	1													
Z0018500	DRAINAGE STRUCTURES TO BE CLEANED	EACH	5	5													
* SPECIALTY ITEMS																	

AUGUSTA BLVD MAINTENANCE YARD



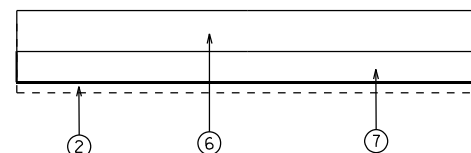
EXISTING TYPICAL SECTION

AUGUSTA BLVD MAINTENANCE YARD



PROPOSED HMA TYPICAL SECTION

AUGUSTA BLVD MAINTENANCE YARD



PROPOSED PCC TYPICAL SECTION (FOR DRIVEWAY ENTRANCE)

LEGEND

- ① EXISTING HMA PAVEMENT (3'-5" TYP)
- ② EXISTING SUBGRADE
- ③ PROPOSED SUBGRADE REMOVAL (EARTH EXCAVATION)
- ④ PROPOSED PAVEMENT REMOVAL (FULL DEPTH)
- ⑤ HOT-MIX ASPHALT SURFACE COURSE, MIX "D", N70 (IL-9.5), 1 1/2"
- ⑥ PROPOSED PCC DRIVEWAY PAVEMENT, 10"
- ⑦ PROPOSED SUBBASE GRANULAR MATERIAL TYPE B, 6"
- ⑧ PROPOSED HOT-MIX ASPHALT BINDER COURSE, IL-19.0, N70, 3"

NOTES

PROPOSED HMA AND PCC SECTIONS DO NOT HAVE THE SAME TOTAL DEPTH OF EXCAVATION. PLEASE BE AWARE OF ELEVATIONS WHILE EXCAVATING.

HOT-MIX ASPHALT MIXTURE REQUIREMENTS		QUALITY MANAGEMENT PROGRAM (QMP)
MIXTURE TYPE	AIR VOIDS(%) @ N _{DES.}	
PAVEMENT RECONSTRUCTION		
HOT-MIX ASPHALT SURFACE COURSE, MIX "D", N70 (IL-9.5), 1 1/2"	4% @ 70 GYR	QC/QA
HOT-MIX ASPHALT BINDER COURSE, IL-19.0, N70, 3"	4% @ 70 GYR	QC/QA
QMP DESIGNATION: QUALITY CONTROL/QUALITY ASSURANCE(QA/QC); QUALITY CONTROL FOR PERFORMANCE(QCP); PAY FOR PERFORMANCE(PFP)		

MIXTURE NOTES:

- THE UNIT WEIGHT USED TO CALCULATE ALL HMA SURFACE MIXTURE QUANTITIES IS 112 LBS/SQ YD/IN.
- THE "AC TYPE" FOR POLYMERIZED HMA MIXES SHALL BE "SBS/SBR PG 76-22" AND FOR NON-POLYMERIZED HMA THE "AC TYPE" SHALL BE "PG 64-22" UNLESS MODIFIED BY RECLAIMED MATERIALS SPECIFICATIONS.

MODEL NUMBER: MAMES
FILE NAME: 06115

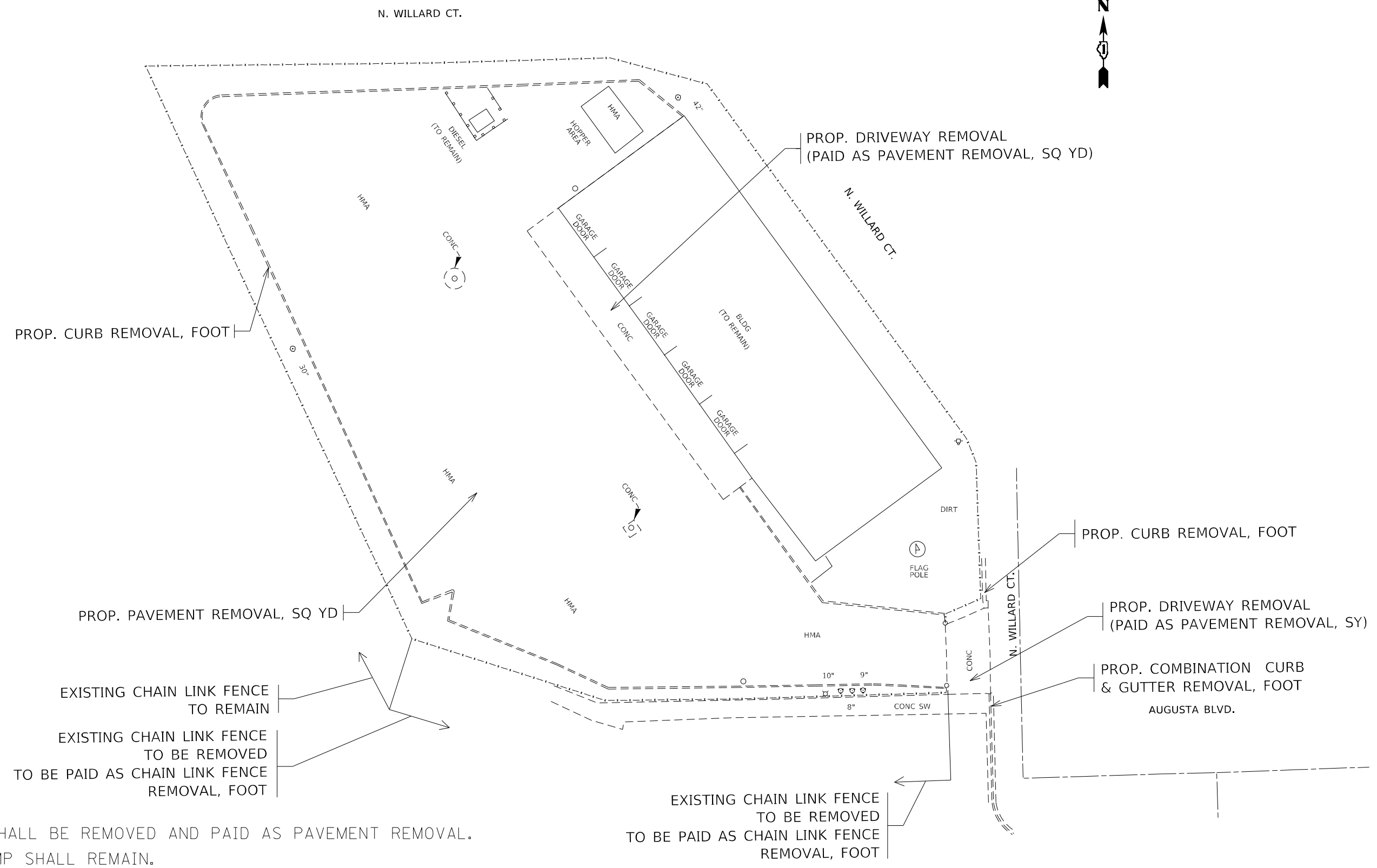
USER NAME = \$USERS	DESIGNED -	REVISED -
	DRAWN -	REVISED -
PLOT SCALE = \$SCALES	CHECKED -	REVISED -
PLOT DATE = \$DATES	DATE -	REVISED -

**STATE OF ILLINOIS
DEPARTMENT OF TRANSPORTATION**

**LANDSCAPE MAINTENANCE YARD (AUGUSTA BLVD)
TYPICAL SECTIONS**

SCALE: SHEET 1 OF 1 SHEETS STA. TO STA.

F.A. RTE.	SECTION	COUNTY	TOTAL SHEETS	SHEET NO.
	2023 LS YARD PARKING	COOK	15	6
ILLINOIS FED. AID PROJECT			CONTRACT NO. 62W01	



CONCRETE PADS SHALL BE REMOVED AND PAID AS PAVEMENT REMOVAL.
EXISTING GAS PUMP SHALL REMAIN.

MODEL: Default
FILE NAME: p:\project\aw_bentley.com\p\w\DOT\Documents\DOT_Offices\Dir\rdt_1\Project\1D\7224\CADD\data\Design\1D\7224_rth-ban.cgm

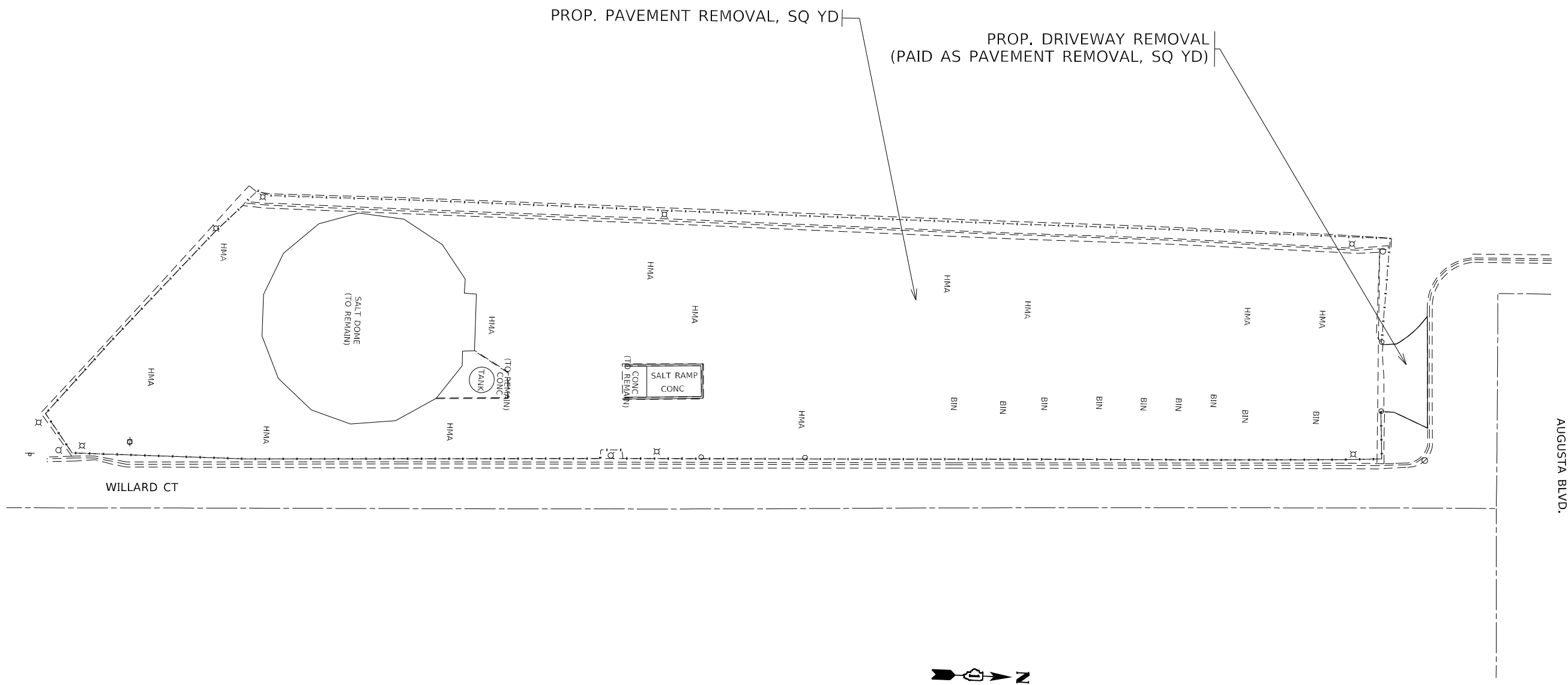
USER NAME = Rana,Kalo	DESIGNED -	REVISED -
	DRAWN -	REVISED -
PLOT SCALE = 40,0000 * / in.	CHECKED -	REVISED -
PLOT DATE = 2/9/2024	DATE -	REVISED -

**STATE OF ILLINOIS
DEPARTMENT OF TRANSPORTATION**

**LANDSCAPE MAINTENANCE YARD (AUGUSTA BLVD), LOCATION #1
EXISTING SITE PLAN AND PROPOSED REMOVAL**

SCALE: 1"=20' SHEET OF SHEETS STA. TO STA.

F.A. RTE.	SECTION	COUNTY	TOTAL SHEETS	SHEET NO.
	2023 LS YARD PARKING	COOK	15	7
			CONTRACT NO. 62W01	
ILLINOIS FED. AID PROJECT				



MODEL: Default
 FILE NAME: p:\ultra\paw_bentley.com\PW\DOT\Documents\DOT Office\Dir\drt_1\Project\ID:07824\CADD\data\Design\ID:07824\sh-1\ba.sgn

USER NAME = Rana,Kalo	DESIGNED -	REVISED -
	DRAWN -	REVISED -
PLOT SCALE = 40,0000 * / in.	CHECKED -	REVISED -
PLOT DATE = 2/9/2024	DATE -	REVISED -

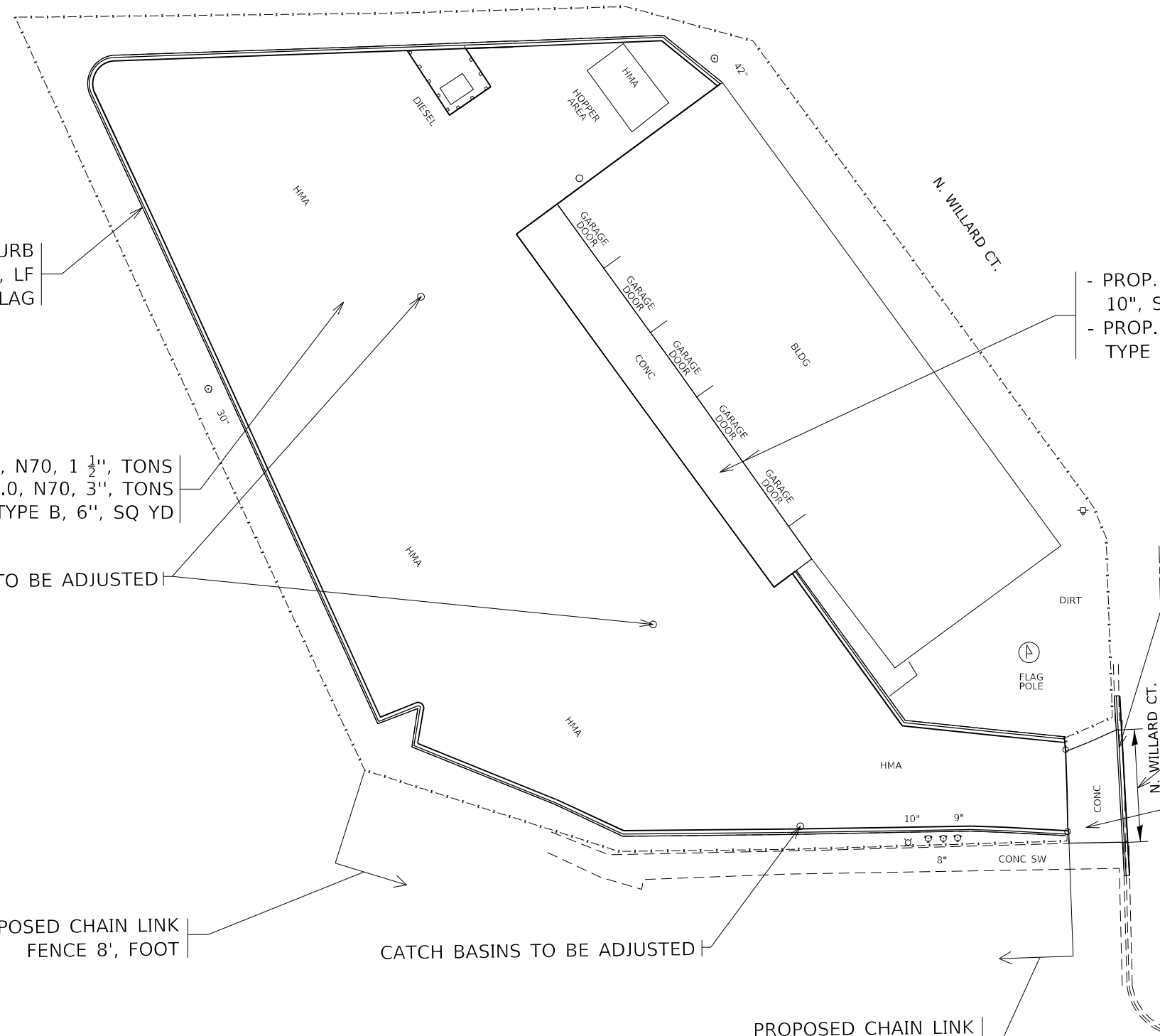
STATE OF ILLINOIS
DEPARTMENT OF TRANSPORTATION

LANDSCAPE MAINTENANCE YARD (AUGUSTA BLVD), LOCATION #2
EXISTING SITE PLAN AND PROPOSED REMOVAL

F.A. RTE.	SECTION	COUNTY	TOTAL SHEETS	SHEET NO.
	2023 LS YARD PARKING	COOK	15	8
CONTRACT NO. 62W01				
		ILLINOIS	FED. AID PROJECT	

SCALE: 1"=20' SHEET OF SHEETS STA. TO STA.

N. WILLARD CT.



PROP. COMBINATION CONCRETE CURB & GUTTER, TYPE B-6:12, LF REVERSED SLOPE CUTTER FLAG

- PROP. PCC DRIVEWAY PAVEMENT, 10", SQ YD
- PROP. SUBBASE GRANULAR MATERIAL, TYPE B 6", SQ YD

PROP. HMA SURFACE COURSE, IL-9.5, MIX "D", N70, 1 1/2", TONS
PROP. HMA BINDER COURSE IL-19.0, N70, 3", TONS
PROP. SUBBASE GRANULAR MATERIAL, TYPE B, 6", SQ YD

CATCH BASINS TO BE ADJUSTED

PROP. COMBINATION CONCRETE CURB & GUTTER TYPE B-6.12, FOOT

PROPOSED DEPRESSED CURB

- PROP. PCC DRIVEWAY PAVEMENT, 10", SQ YD
- PROP. SUBBASE GRANULAR MATERIAL, TYPE B 6", SQ YD

PROPOSED CHAIN LINK FENCE 8', FOOT

CATCH BASINS TO BE ADJUSTED

PROPOSED CHAIN LINK FENCE 8', FOOT

AUGUSTA BLVD.

MODEL: Default
 FILE: 62W01_2023_LS_Yard_Parking_Site_Plan.dwg
 PROJECT: 62W01_2023_LS_Yard_Parking_Site_Plan.dwg
 USER: Rana.Kelo
 DATE: 2/9/2024

USER NAME = Rana.Kelo	DESIGNED -	REVISED -
	DRAWN -	REVISED -
PLOT SCALE = 40,0000 * / in.	CHECKED -	REVISED -
PLOT DATE = 2/9/2024	DATE -	REVISED -

**STATE OF ILLINOIS
DEPARTMENT OF TRANSPORTATION**

**LANDSCAPE MAINTENANCE YARD (AUGUSTA BLVD), LOCATION #1
PROPOSED SITE AND PLAN**

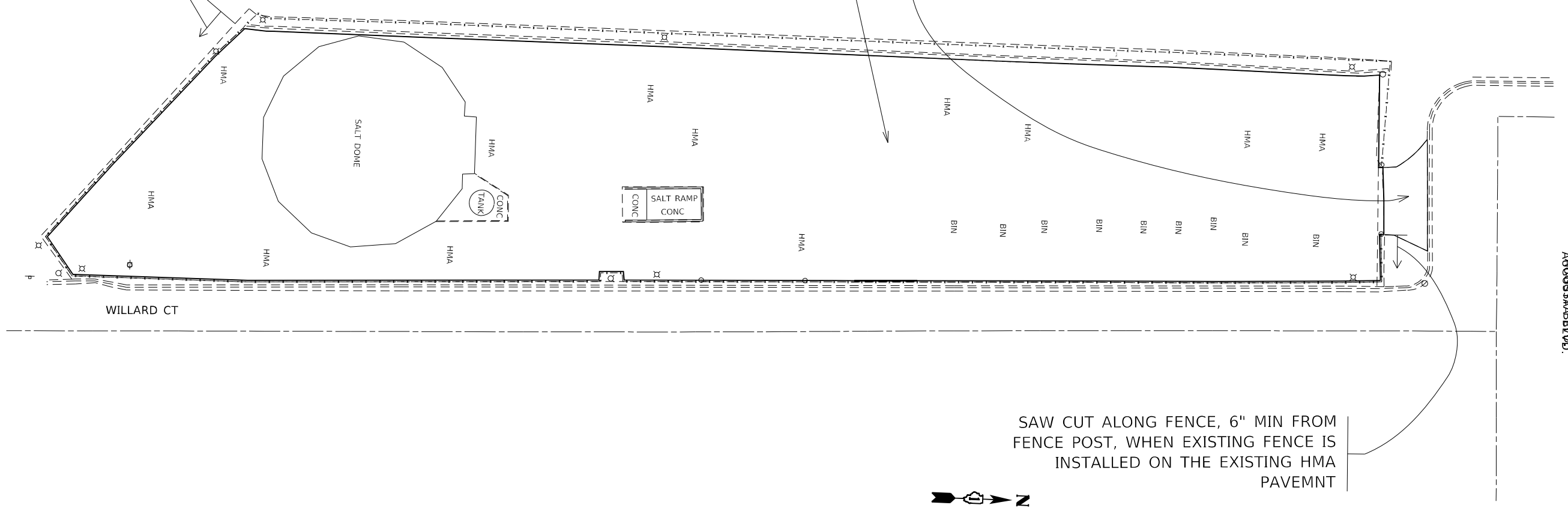
F.A. RTE.	SECTION	COUNTY	TOTAL SHEETS	SHEET NO.
	2023 LS YARD PARKING	COOK	15	9
			CONTRACT NO. 62W01	
		ILLINOIS	FED. AID PROJECT	

SCALE: 1"=20' SHEET OF SHEETS STA. TO STA.

SAW CUT ALONG FENCE, 6" MIN FROM FENCE POST, WHEN EXISTING FENCE IS INSTALLED ON THE EXISTING HMA PAVEMNT

PROP. HMA SURFACE COURSE, IL-9.5, MIX "D", N70, 1 1/2", TONS
 PROP. HMA BINDER COURSE IL-19.0, N70, 3", TONS
 PROP. SUBBASE GRANULAR MATERIAL, TYPE B, 6", SQ YD

- PROP. PCC DRIVEWAY PAVEMENT, 10", SQ YD
 - PROP. SUBBASE GRANULAR MATERIAL, TYPE B 6", SQ YD



SAW CUT ALONG FENCE, 6" MIN FROM FENCE POST, WHEN EXISTING FENCE IS INSTALLED ON THE EXISTING HMA PAVEMNT



MODEL: Default
 FILE NAME: p:\ultra-cad\aw-bee\aw.com\PIV\DOT\Documents\DOT Office\Dir\drt. 1\Project\107824\CADD\data\Design\107824-drt-1-aw.com

USER NAME = Rana,Kalo	DESIGNED -	REVISED -
PLOT SCALE = 40,0000 * / in.	DRAWN -	REVISED -
PLOT DATE = 2/9/2024	CHECKED -	REVISED -
	DATE -	REVISED -

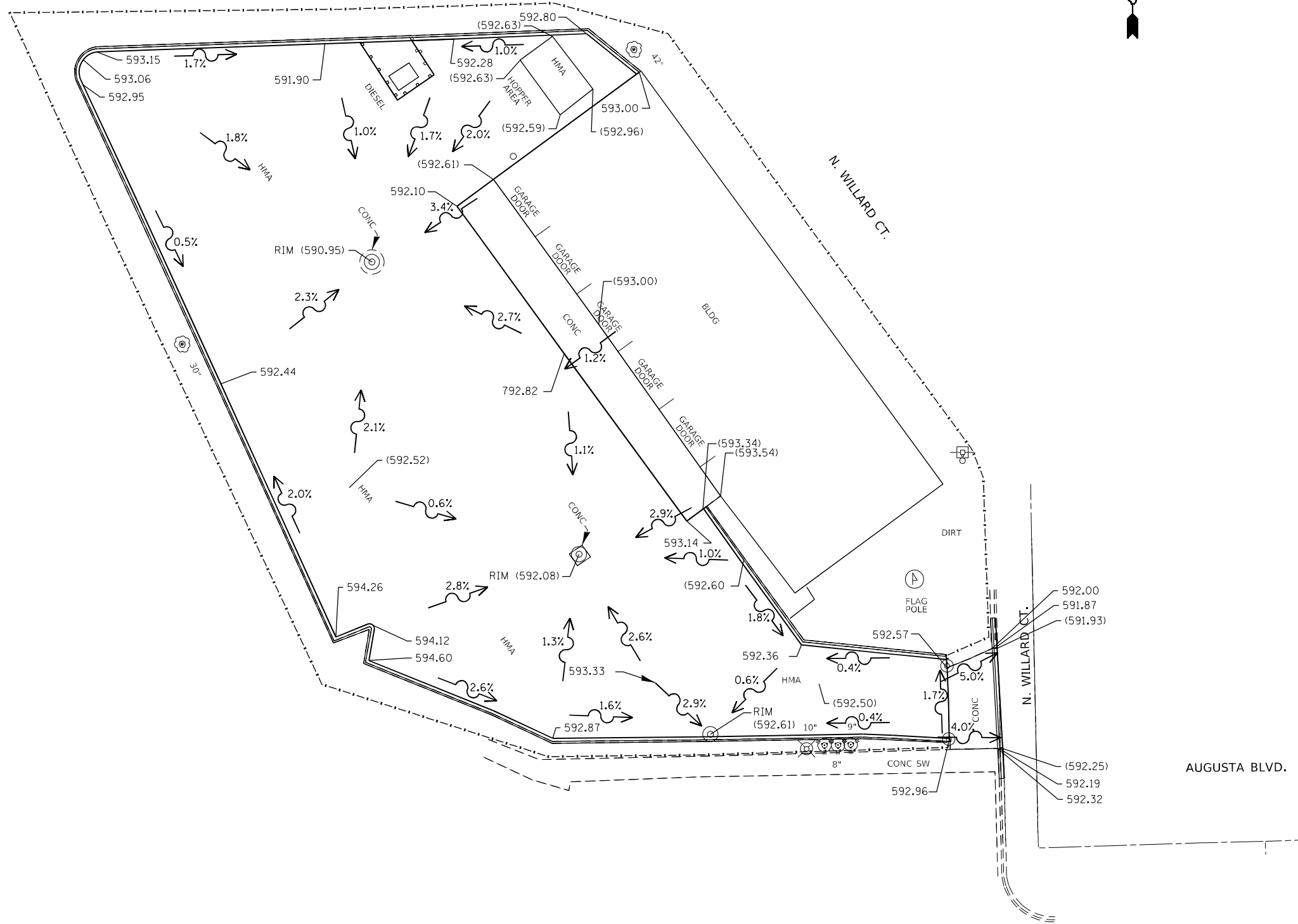
**STATE OF ILLINOIS
 DEPARTMENT OF TRANSPORTATION**

**LANDSCAPE MAINTENANCE YARD (AUGUSTA BLVD), LOCATION #2
 PROPOSED SITE AND PLAN**

SCALE: 1"=20' SHEET OF SHEETS STA. TO STA.

F.A. RTE.	SECTION	COUNTY	TOTAL SHEETS	SHEET NO.
	2023 LS YARD PARKING	COOK	15	10
ILLINOIS FED. AID PROJECT			CONTRACT NO. 62W01	

N. WILLARD CT.



LEGEND:
 XXX.XX - PROPOSED
 (XXX.XX) - EXISTING

MODEL: Default
 FILE NAME: p:\uldest-pw-bead-fay.com\PIV\DOT\Documents\DOT Office\Dir\rdet_1\Project\107824\CADD\data\Design\107824-1-1-1-1.dwg

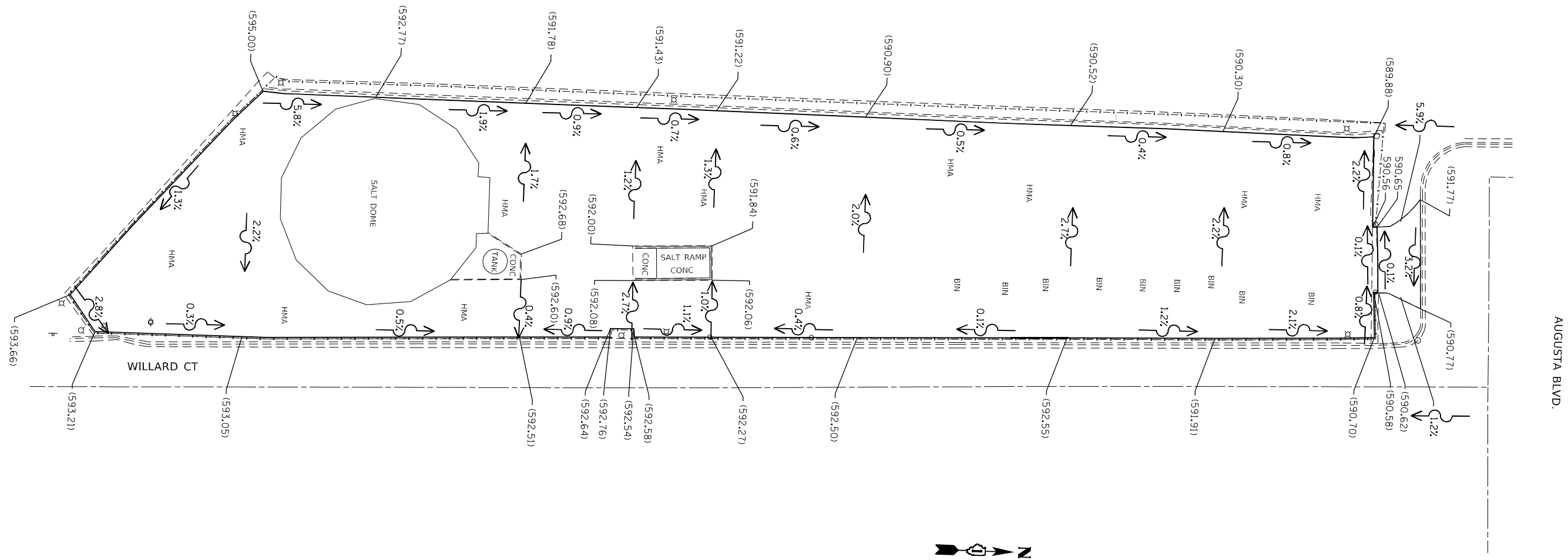
USER NAME = Rana,Kalo	DESIGNED -	REVISED -
	DRAWN -	REVISED -
PLOT SCALE = 40,0000 * / in.	CHECKED -	REVISED -
PLOT DATE = 2/9/2024	DATE -	REVISED -

STATE OF ILLINOIS
DEPARTMENT OF TRANSPORTATION

LANDSCAPE MAINTENANCE YARD (AUGUSTA BLVD), LOCATION #1
PROPOSED GRADING PLAN

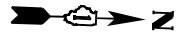
SCALE: 1"=20' SHEET OF SHEETS STA. TO STA.

F.A. RTE.	SECTION	COUNTY	TOTAL SHEETS	SHEET NO.
	2023 LS YARD PARKING	COOK	15	11
ILLINOIS FED. AID PROJECT			CONTRACT NO. 62W01	



AUGUSTA BLVD.

WILLARD CT



LEGEND:
 XXX.XX - PROPOSED
 (XXX.XX) - EXISTING

MODEL: Default
 FILE: m:\m\p\public\csw_bentley.com\PROJECTS\DOT_Offices\Bldg\1\PROJECTS\DOT\722\21\CG\DD\DATA\DESIGN\13\10722-21-salt-dome.dwg

USER NAME = Rana,Kalo	DESIGNED -	REVISED -
	DRAWN -	REVISED -
PLOT SCALE = 40,0069' / in.	CHECKED -	REVISED -
PLOT DATE = 2/9/2024	DATE -	REVISED -

STATE OF ILLINOIS
 DEPARTMENT OF TRANSPORTATION

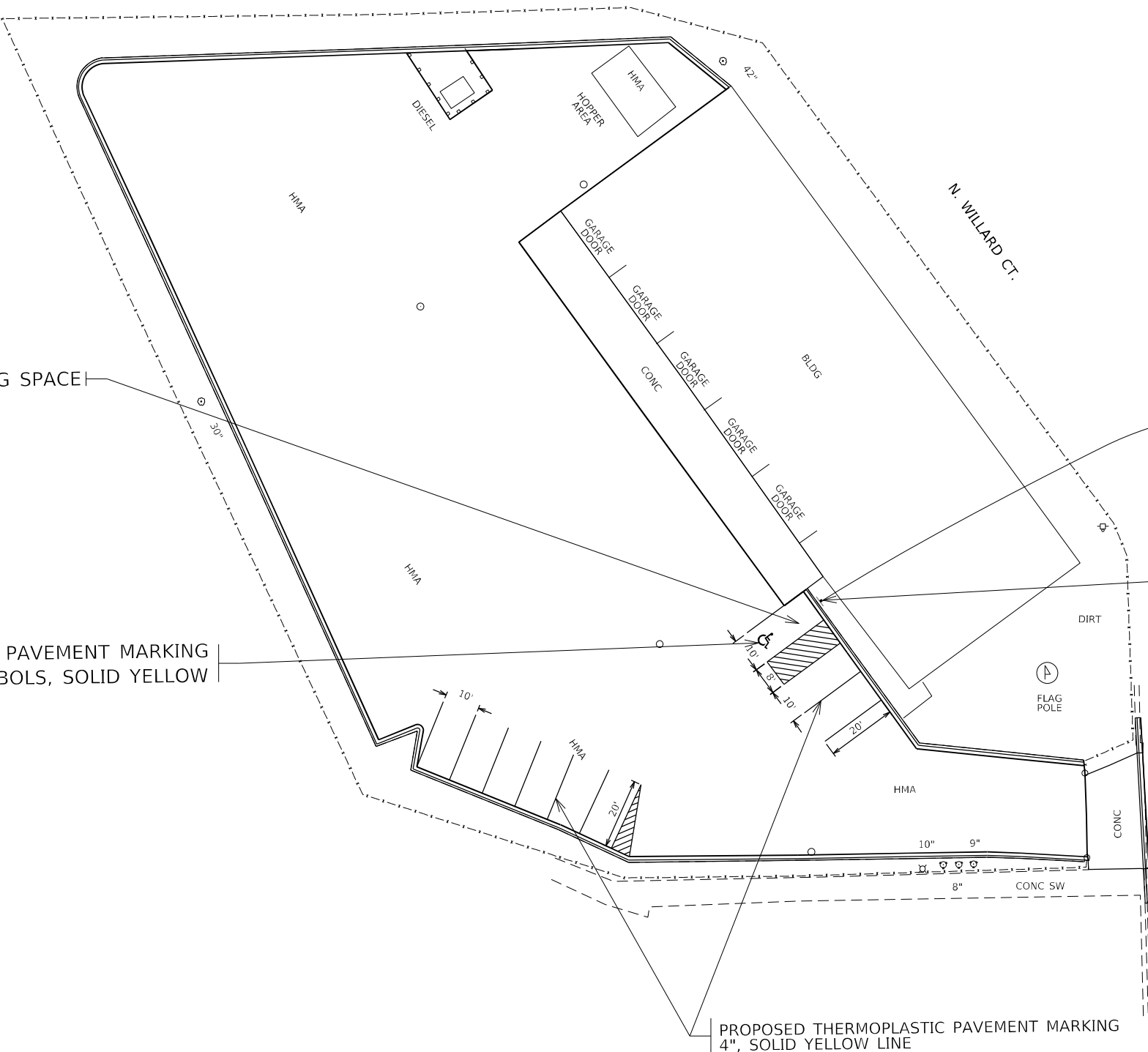
LANDSCAPE MAINTENANCE YARD (AUGUSTA BLVD), LOCATION #2
 PROPOSED GRADING PLAN

SCALE: 1"=20' SHEET OF SHEETS STA. TO STA.

F.A. RTE.	SECTION	COUNTY	TOTAL SHEETS	SHEET NO.
	2023 LS YARD PARKING	COOK	15	12
ILLINOIS FED. AID PROJECT			CONTRACT NO. 62W01	



N. WILLARD CT.



PROPOSED ACCESSIBLE PARKING SPACE

PROPOSED THERMOPLASTIC PAVEMENT MARKING
LETTERS & SYMBOLS, SOLID YELLOW

PROPOSED THERMOPLASTIC PAVEMENT MARKING
4", SOLID YELLOW LINE



R7-8
12" x 18"
R7-1101
12" x 6"

- PROPOSED SIGN PANEL - TYPE 1
- PROPOSED METAL POST - TYPE A

MODEL: Default
 FILE NAME: p:\ultra-cw-beadley.com\PIV\DOT\Documents\DOT Office\Dir\rdet_1\Project\ID:07824\CAD\data\Design\ID:07824-shr-ban.dwg

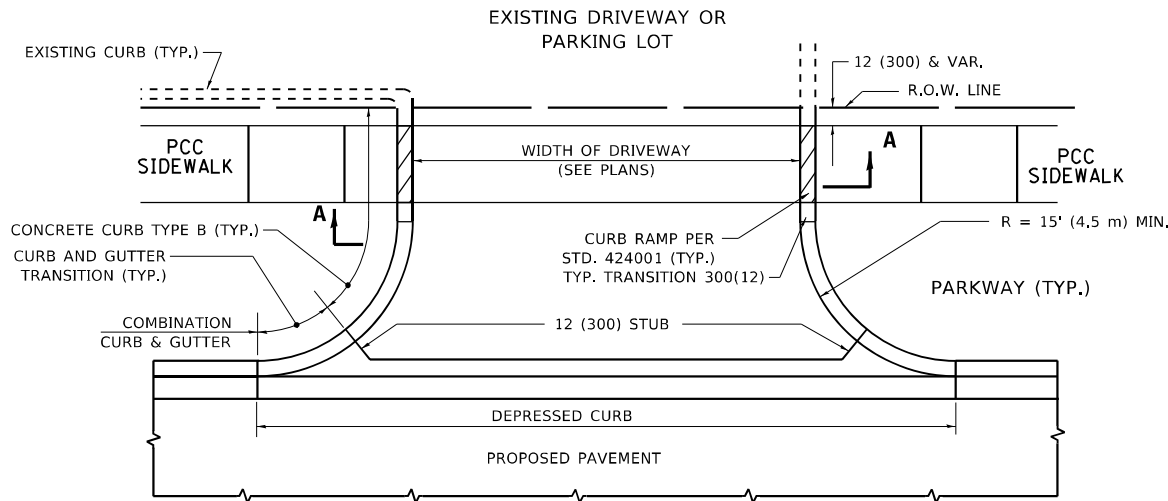
USER NAME = Rana,Kalo	DESIGNED -	REVISED -
PLOT SCALE = 40,0000 * / in.	DRAWN -	REVISED -
PLOT DATE = 2/9/2024	CHECKED -	REVISED -
	DATE -	REVISED -

**STATE OF ILLINOIS
DEPARTMENT OF TRANSPORTATION**

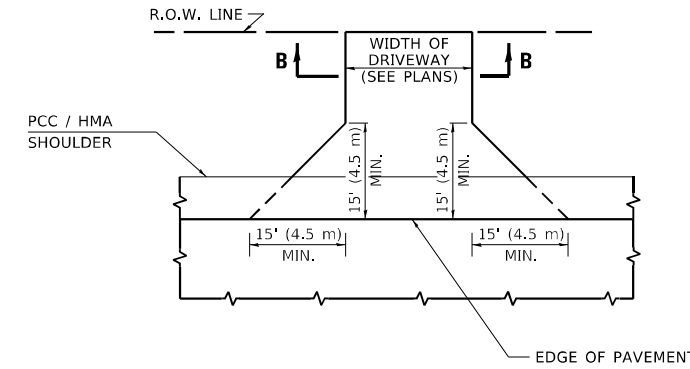
**LANDSCAPE MAINTENANCE YARD (AUGUSTA BLVD), LOCATION #1
PROPOSED PAVEMENT MARKING PLAN**

SCALE: 1"=20' SHEET OF SHEETS STA. TO STA.

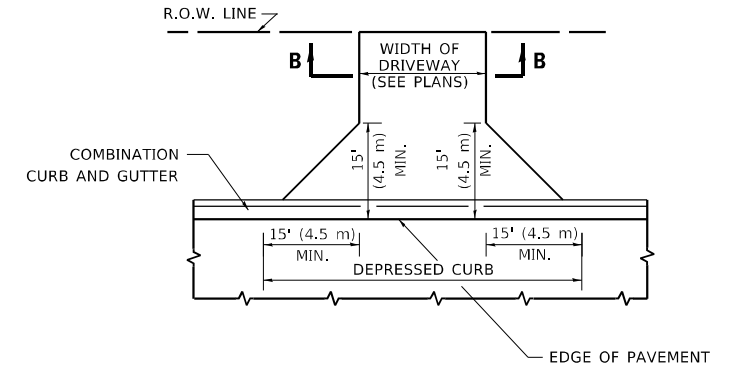
F.A. RTE.	SECTION	COUNTY	TOTAL SHEETS	SHEET NO.
	2023 LS YARD PARKING	COOK	15	13
ILLINOIS FED. AID PROJECT			CONTRACT NO. 62W01	



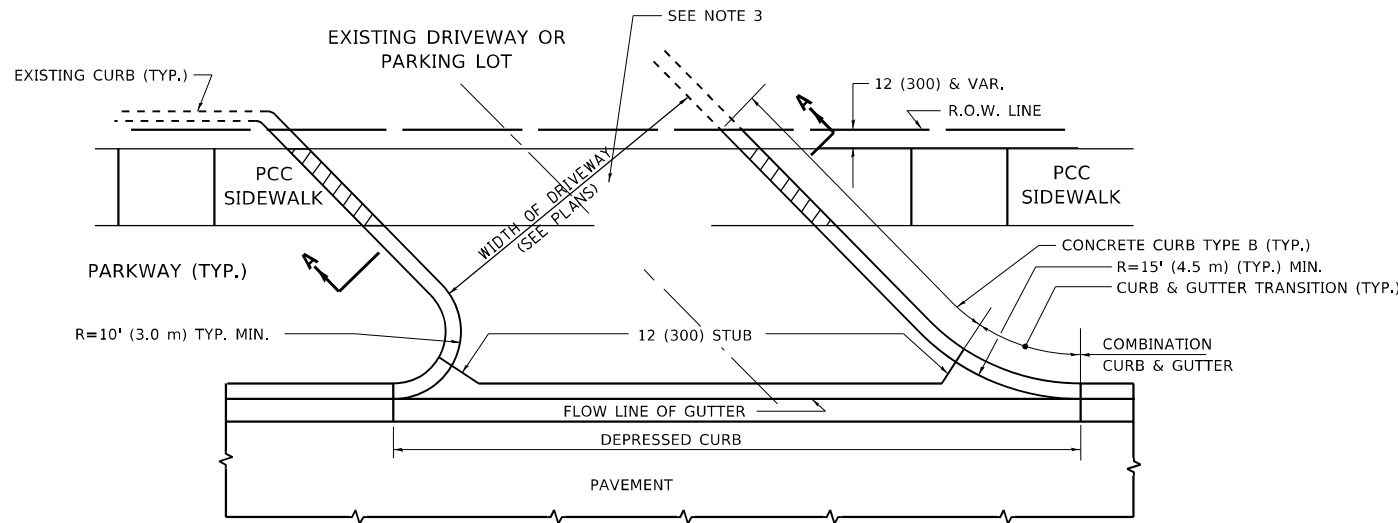
WITH CONCRETE CURB, TYPE B



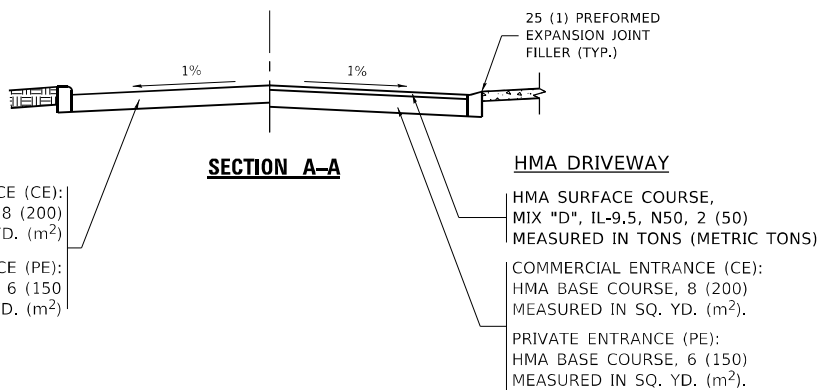
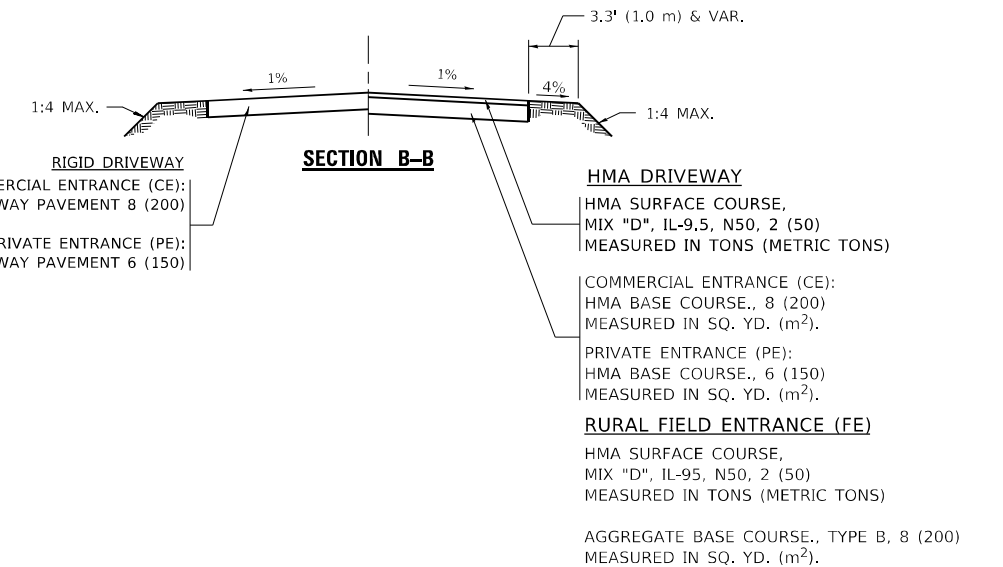
ADJACENT TO PCC /HMA SHOULDER



ADJACENT TO CURB AND GUTTER



WITH CONCRETE CURB, TYPE B



GENERAL NOTES

- 1. DRIVEWAY SLOPES, LOCATIONS, & GEOMETRIC LAYOUT SHALL BE IN ACCORDANCE WITH THE LATEST EDITION OF THE "HANDBOOK FOR POLICY ON PERMITS FOR ACCESS DRIVEWAYS TO STATE HIGHWAYS". FOR FURTHER LAYOUT REQUIREMENTS, REFER TO ILLUSTRATIONS IN THE PERMIT HANDBOOK. DRIVEWAYS SHALL BE REPLACED IN KIND, UNLESS OTHERWISE NOTED ON THE PLANS.
- 2. COMMERCIAL DRIVEWAYS SHALL BE CONSTRUCTED WITH CONCRETE CURB, TYPE B RETURNS EXCEPT WHEN THE SIDEWALK EDGE IS 4 FEET (1.2 METERS) OR LESS FROM THE BACK OF CURB, CONSTRUCT A FLARE DRIVEWAY WITHOUT CURB.

ALL DIMENSIONS ARE IN INCHES (MILLIMETERS) UNLESS OTHERWISE NOTED.

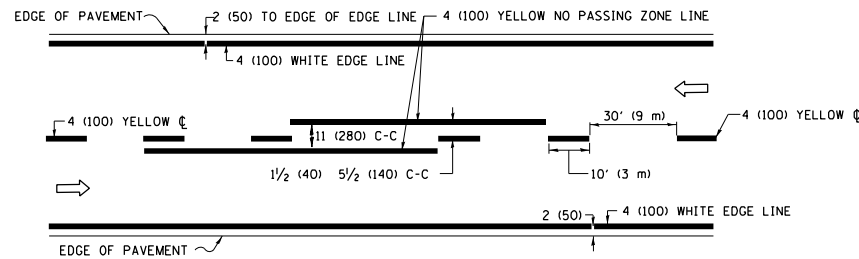
MODEL: Default
 FILE NAME: p:\uldrst-pw-bentley.com\p\uldrst-pw\Documents\DOT Office\Drivrdet - 11\Project\11072\21\CAD\data\Design\Drivrdet.dgn
 PROJECT: 11072\21\CAD\data\Design\Drivrdet - 11

USER NAME = Rana,Karlo	DESIGNED - R. SHAH	REVISED - R. BORO 06-11-08
PLOT SCALE = 100,0000' / in.	CHECKED -	REVISED - R. BORO 09-06-11
PLOT DATE = 2/9/2024	DATE - 11-04-95	REVISED - K. SMITH 08-28-19
		REVISED - K. SMITH 11-18-22

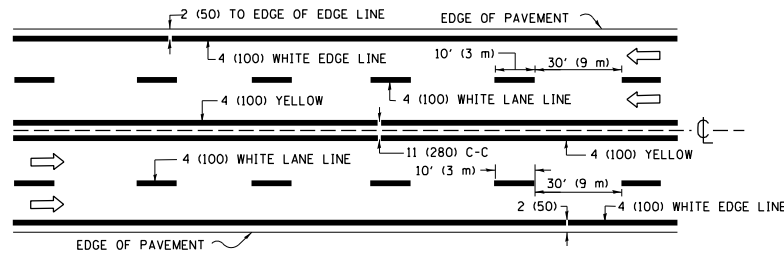
**STATE OF ILLINOIS
DEPARTMENT OF TRANSPORTATION**

DRIVEWAY DETAILS – DISTANCE BETWEEN R.O.W. AND FACE OF CURB & EDGE OF SHOULDER ≥ 15'(4.5m)			
SCALE: NONE	SHEET 1 OF 1 SHEETS	STA. TO STA.	

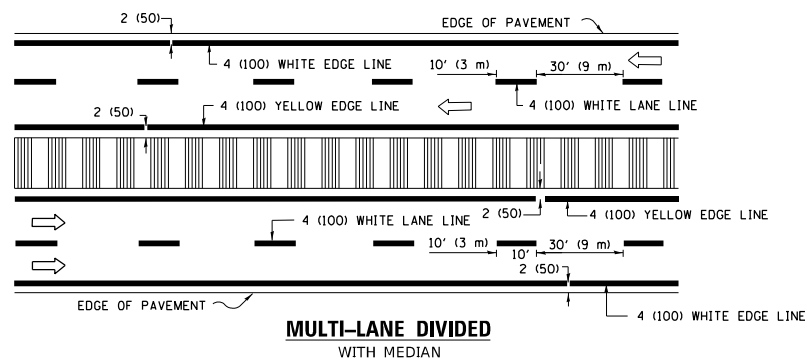
F.A. RTE.	SECTION	COUNTY	TOTAL SHEETS	SHEET NO.
	2023 LS YARD PARKING	COOK	15	14
BD400-01 (BD-01)		CONTRACT NO. 62W01		
ILLINOIS FED. AID PROJECT				



2-LANE ROADWAY

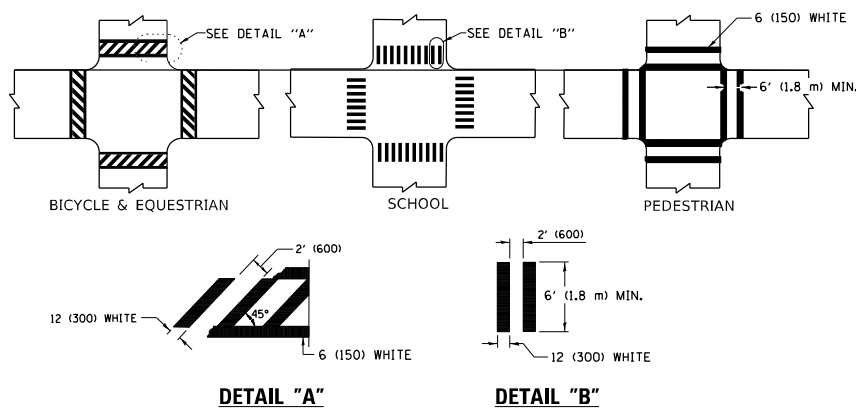


MULTI-LANE UNDIVIDED



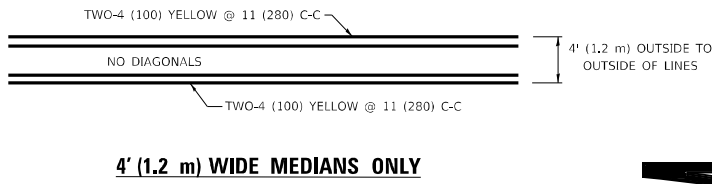
MULTI-LANE DIVIDED WITH MEDIAN

TYPICAL LANE AND EDGE LINE MARKING

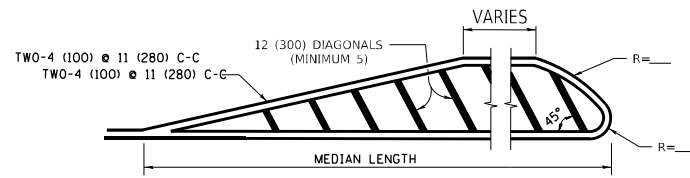


TYPICAL CROSSWALK MARKING

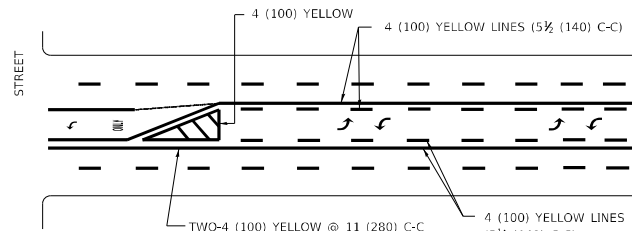
* MARKINGS SHALL BE INSTALLED PARALLEL TO THE CENTERLINE OF THE ROAD WHICH IT CROSSES



4' (1.2 m) WIDE MEDIANS ONLY

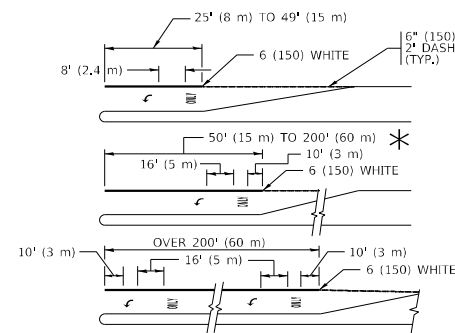


MEDIANS OVER 4' (1.2 m) WIDE



MEDIAN WITH TWO-WAY LEFT TURN LANE

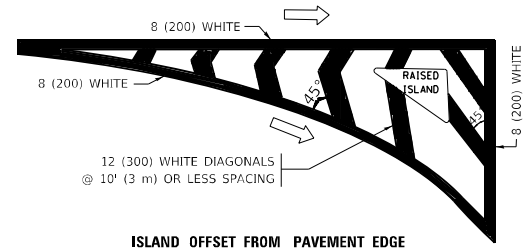
TYPICAL PAINTED MEDIAN MARKING



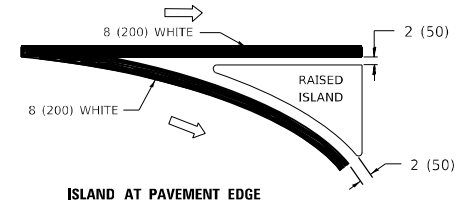
TYPICAL LEFT (OR RIGHT) TURN LANE

TYPICAL TURN LANE MARKING

FULL SIZE LETTERS 8" (2.4 m) AND ARROWS SHALL BE USED.
 AREA = 15.6 SQ. FT. (1.5 m²) ONLY AREA = 20.8 SQ. FT. (1.9 m²)
 * TURN LANES IN EXCESS OF 400' (120 m) IN LENGTH MAY HAVE AN ADDITIONAL SET OF ARROW - "ONLY" INSTALLED MIDWAY BETWEEN THE OTHER TWO SETS OF ARROW - "ONLY".

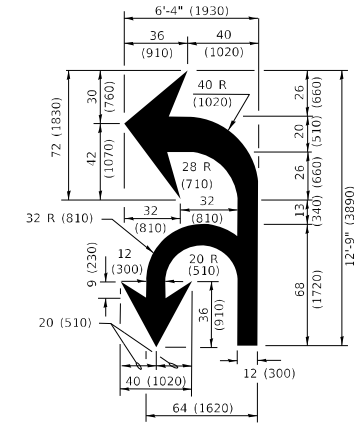


ISLAND OFFSET FROM PAVEMENT EDGE

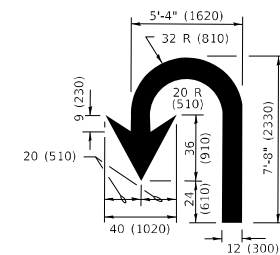


ISLAND AT PAVEMENT EDGE

TYPICAL ISLAND MARKING



COMBINATION LEFT AND U-TURN



U-TURN

LANE REDUCTION TRANSITION

* LANE REDUCTION ARROWS REQUIRED AT SPEEDS OF 45 MPH OR GREATER OR WHEN SPECIFIED IN PLANS.

D(FT)	SPEED LIMIT
345	30
425	35
500	40
580	45
665	50
750	55

TYPE OF MARKING	WIDTH OF LINE	PATTERN	COLOR	SPACING / REMARKS
CENTERLINE ON 2 LANE PAVEMENT	4 (100)	SKIP-DASH	YELLOW	10' (3 m) LINE WITH 30' (9 m) SPACE
CENTERLINE ON MULTI-LANE UNDIVIDED PAVEMENT	2 @ 4 (100)	SOLID	YELLOW	11 (280) C-C
NO PASSING ZONE LINES: FOR ONE DIRECTION FOR BOTH DIRECTIONS	4 (100) 2 @ 4 (100)	SOLID SOLID	YELLOW YELLOW	5½ (140) C-C FROM SKIP-DASH CENTERLINE 11 (280) C-C OMIT SKIP-DASH CENTERLINE BETWEEN
LANE LINES	4 (100) 5 (125) ON FREEWAYS	SKIP-DASH SKIP-DASH	WHITE WHITE	10' (3 m) LINE WITH 30' (9 m) SPACE
DOTTED LINES (EXTENSIONS OF CENTER, LANE OR TURN LANE MARKINGS)	SAME AS LINE BEING EXTENDED	SKIP-DASH	SAME AS LINE BEING EXTENDED	2' (600) LINE WITH 6' (1.8 m) SPACE
EDGE LINES	4 (100)	SOLID	YELLOW-LEFT WHITE-RIGHT	OUTLINE MEDIANS IN YELLOW
TURN LANE MARKINGS	6 (150) LINE; FULL SIZE LETTERS & SYMBOLS (8" (2.4m))	SOLID	WHITE	SEE TYPICAL TURN LANE MARKING DETAIL
TWO WAY LEFT TURN MARKING	2 @ 4 (100) EACH DIRECTION 8" (2.4m) LEFT ARROW	SKIP-DASH AND SOLID IN PAIRS	YELLOW WHITE	10' (3 m) LINE WITH 30' (9 m) SPACE FOR SKIP-DASH; 5½ (140) C-C BETWEEN SOLID LINE AND SKIP-DASH LINE SEE TYPICAL TWO-WAY LEFT TURN MARKING DETAIL
CROSSWALK LINES (PEDESTRIAN) A. DIAGONALS (BIKE & EQUESTRIAN) B. LONGITUDINAL BARS (SCHOOL)	2 @ 6 (150) 12 (300) @ 45° 12 (300) @ 90°	SOLID SOLID SOLID	WHITE WHITE WHITE	NOT LESS THAN 6' (1.8 m) APART 2' (600) APART 2' (600) APART SEE TYPICAL CROSSWALK MARKING DETAILS.
STOP LINES	24 (600)	SOLID	WHITE	PLACE 4' (1.2 m) IN ADVANCE OF AND PARALLEL TO CROSSWALK, IF PRESENT. OTHERWISE, PLACE AT DESIRED STOPPING POINT, PARALLEL TO CROSSROAD CENTERLINE, WHERE POSSIBLE
PAINTED MEDIANS	2 @ 4 (100) WITH 12 (300) DIAGONALS @ 45° NO DIAGONALS USED FOR 4' (1.2 m) WIDE MEDIANS	SOLID	YELLOW: TWO WAY TRAFFIC WHITE: ONE WAY TRAFFIC	11 (280) C-C FOR THE DOUBLE LINE SEE TYPICAL PAINTED MEDIAN MARKING.
GORE MARKING AND CHANNELIZING LINES	8 (200) WITH 12 (300) DIAGONALS @ 45°	SOLID	WHITE	DIAGONALS: 15' (4.5 m) C-C (LESS THAN 30MPH (50 km/h)) 20' (6 m) C-C 30MPH (50 km/h) TO 45MPH (70 km/h) 30' (9 m) C-C (OVER 45MPH (70 km/h))
RAILROAD CROSSING	24 (600) TRANSVERSE LINES: "RR" IS 8" (1.8 m) LETTERS; 16 (400) LINE FOR "X"	SOLID	WHITE	SEE STATE STANDARD 780001 AREA OF: "R"=3.6 SQ. FT. (0.33 m ²) EACH "X"=54.0 SQ. FT. (5.0 m ²)
SHOULDER DIAGONALS (REQUIRED FOR SHOULDERS ≥ 8')	12 (300) @ 45°	SOLID	WHITE - RIGHT YELLOW - LEFT	50' (15 m) C-C (LESS THAN 30MPH (50 km/h)) 75' (25 m) C-C 30 MPH (50 km/h) TO 45MPH (70 km/h) 150' (45 m) C-C (OVER 45MPH (70 km/h))
U TURN ARROW	SEE DETAIL	SOLID	WHITE	16.3 SF
2 ARROW COMBINATION LEFT AND U TURN	SEE DETAIL	SOLID	WHITE	30.4 SF

FOR FURTHER DETAILS ON PAVEMENT MARKING REFER TO STANDARD SPECIFICATIONS FOR ROAD AND BRIDGE CONSTRUCTION AND STATE STANDARD 780001.

All dimensions are in inches (millimeters) unless otherwise shown.

MODEL: Default
 FILE NAME: p:\p\std-pav-beh-hwy.com\FIN\DOT\Documents\DOT_Offices\Distric...
 PROJECT: 107224\CD\Drawings\Design\Distric...

USER NAME	DESIGNED	REVISOR	DATE
Rana,Kalo	EVERS	C. JUCIUS	09-09-09
		C. JUCIUS	07-01-13
		C. JUCIUS	12-21-15
		C. JUCIUS	04-12-16

**STATE OF ILLINOIS
 DEPARTMENT OF TRANSPORTATION**

**DISTRICT ONE
 TYPICAL PAVEMENT MARKINGS**

SCALE: NONE SHEET 1 OF 2 SHEETS STA. TO STA.

F.A. RTE.	SECTION	COUNTY	TOTAL SHEETS	SHEET NO.
2023 LS YARD PARKING	TC-13	COOK	15	15
ILLINOIS			CONTRACT NO. 62W01	
FED. AID PROJECT				