

STATE OF ILLINOIS  
DEPARTMENT OF TRANSPORTATION

F.A.U. RTE.	SECTION	COUNTY	TOTAL SHEETS	SHEET NO.
367	(99-4-1HB-2) BR 23	WILL	14	1
		ILLINOIS	CONTRACT NO. 62W42	

FOR INDEX OF SHEETS, SEE SHEET NO. 2

**DESIGN DESIGNATION**  
MINOR ARTERIAL

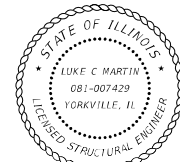
**TRAFFIC DATA**

I-80 (BRIGGS ST TO US 30)  
EXISTING ADT: 70,900 (2019)  
POSTED SPEED LIMIT: 60 MPH

GOUGAR ROAD  
EXISTING ADT: 10,900 (2019)  
POSTED SPEED LIMIT: 50 MPH

APPLY TO SHEETS:  
1-4, 9-14

APPLY TO SHEETS:  
5-8



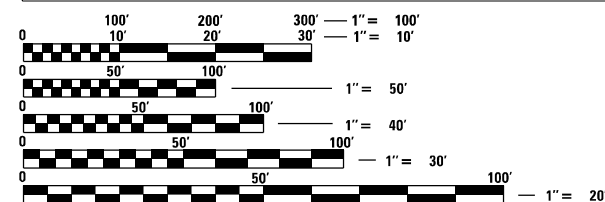
*Patrick W. Keeffe*

*Luke C. Martin*

PATRICK W. KEEFFE  
GKE, LLC  
NO.: 062055351  
DATE SIGNED: 1/26/2024  
EXP. DATE: 11/30/2025

LUKE C. MARTIN  
GKE, LLC  
NO.: 081007429  
DATE SIGNED: 1/26/2024  
EXP. DATE: 11/30/2024

PROJECT IS LOCATED IN VILLAGE OF NEW LENOX



FULL SIZE PLANS HAVE BEEN PREPARED USING STANDARD ENGINEERING SCALES, REDUCED SIZED PLANS WILL NOT CONFORM TO STANDARD SCALES. IN MAKING MEASUREMENTS ON REDUCED PLANS, THE ABOVE SCALES MAY BE USED.

J.U.L.I.E.  
JOINT UTILITY LOCATION INFORMATION FOR EXCAVATION  
1-800-892-0123  
OR 811

PROJECT ENGINEER SUNG BYUN (847) 705-4288  
PROJECT MANAGER KIM HARVEY (847) 705-4055

CONTRACT NO. 62W42

**PROPOSED  
HIGHWAY PLANS**

FAU ROUTE 367 (GOUGAR ROAD) OVER I-80  
SECTION (99-4-1HB-2) BR 23  
PROJECT NHPP-F3EU(786)  
BRIDGE DECK OVERLAY  
WILL COUNTY

C-91-140-24

RANGE 11E, 3RD PRINCIPAL MERIDIAN



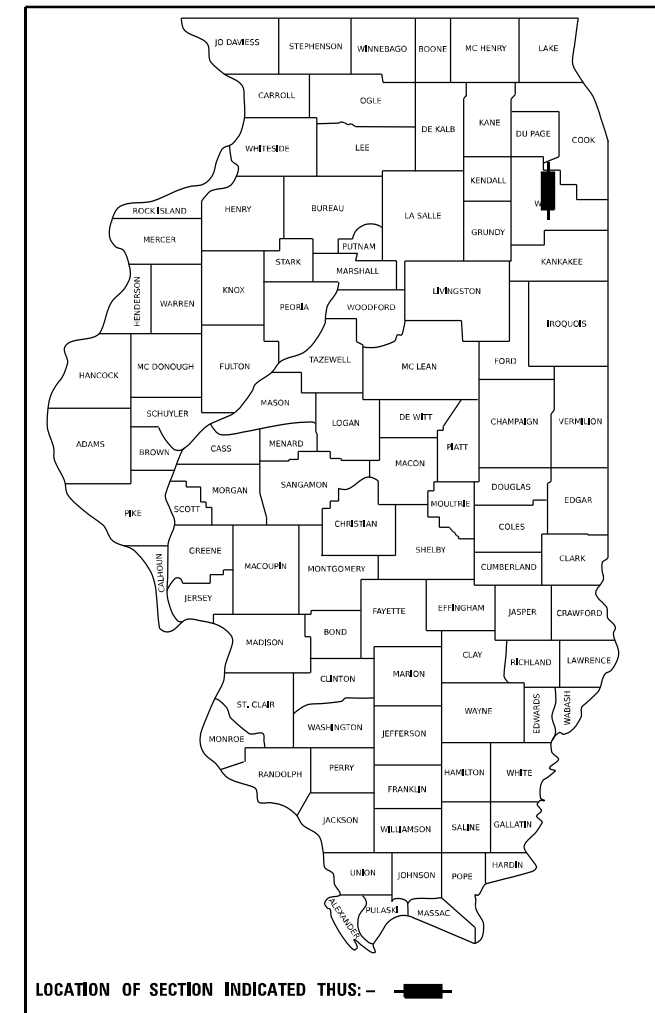
PROJECT ENDS  
STA. 51 + 14.75

GOUGAR ROAD OVER I-80  
(EX. SN 099-0203)

PROJECT BEGINS  
STA. 48 + 83.25

GROSS LENGTH = 231.50 FT. = 0.044 MILE  
NET LENGTH = 231.50 FT. = 0.044 MILE

D-91-205-19



LOCATION OF SECTION INDICATED THUS: - [black rectangle] -

STATE OF ILLINOIS  
DEPARTMENT OF TRANSPORTATION

SUBMITTED *January 17, 2024*

*John R. [Signature]*  
REGIONAL ENGINEER

March 22, 2024 *[Signature]*  
ENGINEER OF DESIGN AND ENVIRONMENT

March 22, 2024 *[Signature]*  
DIRECTOR OF HIGHWAYS PROJECT IMPLEMENTATION

PRINTED BY THE AUTHORITY  
OF THE STATE OF ILLINOIS

**GENERAL NOTES**

- BEFORE STARTING ANY EXCAVATION, THE CONTRACTOR SHALL CALL JULIE AT (800) 892-0123 OR 811 TO DETERMINE WHICH UTILITIES ARE WITHIN THE AREA. 48 HOUR NOTIFICATION IS REQUIRED.
- THE CONTRACTOR SHALL COORDINATE CONSTRUCTION ACTIVITIES WITH UTILITY COMPANIES AS REQUIRED.
- THE CONTRACTOR WILL NOT BE ALLOWED TO SET UP A YARD OR FIELD OFFICE ON STATE PROPERTY WITHOUT WRITTEN PERMISSION FROM THE DEPARTMENT.
- WHEN ARTIFICIAL LIGHTING IS UTILIZED IN NIGHT OPERATIONS THE CONTRACTOR SHALL EXERCISE THE UTMOST PRECAUTIONS IN PREVENTING ADVERSE VISIBILITY TO THE MOTORING PUBLIC AND ADJACENT RESIDENTIAL AREAS.
- THE CONTRACTOR SHALL SWEEP AND CLEAN THE PAVEMENT SURFACE, PER ARTICLE 107.15 OF THE STANDARD SPECIFICATIONS AND AS DIRECTED BY THE ENGINEER.
- BEFORE BEGINNING ANY WORK, THE CONTRACTOR SHALL RETAIN AND RECORD (FOR FUTURE REFERENCES), ALL EXISTING PAVEMENT MARKING LINES IN ORDER THAT THESE LOCATIONS CAN BE RE-ESTABLISHED FOR STRIPING. EXACT LOCATIONS OF ALL STRIPING SHALL BE AS DIRECTED BY THE ENGINEER.
- THE CONTRACTOR SHALL PROTECT EXISTING UTILITIES AND SHALL BRACE AND SUPPORT THE UTILITIES PROPERLY IN ORDER TO PREVENT SETTLEMENT, DISPLACEMENT, OR DAMAGE TO THE UTILITIES. THE PROTECTION OF THE UTILITIES AS SPECIFIED HEREIN WILL NOT BE PAID FOR SEPARATELY, BUT SHALL BE CONSIDERED INCLUDED IN THE CONTRACT.
- THE CONTRACTOR SHALL TAKE CARE IN REMOVING OR EXCAVATING NEAR ALL EXISTING ITEMS WHICH WILL REMAIN. ANY DAMAGE DONE TO EXISTING ITEMS BY THE CONTRACTOR SHALL BE REPAIRED AT THE CONTRACTOR'S EXPENSE.
- THE CONTRACTOR IS RESPONSIBLE FOR MAINTAINING DRAINAGE THROUGHOUT THE CONSTRUCTION OF THIS PROJECT. THIS WORK WILL NOT BE PAID FOR SEPARATELY AND SHALL BE CONSIDERED INCLUDED IN THE COST OF THE CONTRACT.
- NO WORK SHALL COMMENCE UNTIL TRAFFIC CONTROL REQUIREMENTS ARE MET.
- IT SHALL BE THE CONTRACTOR'S RESPONSIBILITY TO VERIFY ALL DIMENSIONS AND CONDITIONS EXISTING IN THE FIELD PRIOR TO ORDERING MATERIALS AND BEGINNING CONSTRUCTION.
- PREFORMED PLASTIC PAVEMENT MARKINGS, TYPE D SHALL BE USED FOR CENTERLINE PAVEMENT MARKINGS WITHIN THE BRIDGE LIMITS. MODIFIED URETHANE PAVEMENT MARKINGS SHALL BE USED FOR EDGE LINE PAVEMENT MARKINGS WITHIN THE BRIDGE LIMITS. THERMOPLASTIC PAVEMENT MARKING SHALL BE USED FOR CENTERLINE AND EDGE LINE PAVEMENT MARKINGS OUTSIDE OF THE BRIDGE LIMITS ON HOT-MIX ASPHALT PAVEMENT.
- SUGGESTED STAGING AND TRAFFIC CONTROL:  
CONSTRUCT HMA BRIDGE DECK OVERLAY IN TWO STAGES.  
TWO-WAY TRAFFIC OVER THE BRIDGE REDUCED TO ONE LANE FOR EACH STAGE.  
FLAGGERS UTILIZED FOR TRAFFIC CONTROL.  
CONSTRUCT HMA BRIDGE DECK OVERLAY WITHIN THE CLOSED TRAFFIC LANE.
- NO CONTRACT SPECIFIC TEMPORARY TRAFFIC CONTROL IS EXPECTED ON I-80. ALL WORK WILL BE COMPLETED USING TEMPORARY LANE CLOSURES DURING THE ALLOWABLE HOURS LISTED IN THE KEEPING THE EXPRESSWAY OPEN TO TRAFFIC SP. TEMPORARY LANE CLOSURES WILL BE SET ACCORDING TO APPLICABLE STATE STANDARDS AND DISTRICT DETAILS. SEE STRUCTURAL PLAN SHEETS 7 AND 8 FOR PROPOSED WORK ON I-80.
- THE CONTRACTOR IS REQUIRED TO COORDINATE THE CONSTRUCTION OPERATIONS WITH CONTRACT 62R29 (I-80 RECONSTRUCTION AND WIDENING), OTHER CONSTRUCTION AND MAINTENANCE OPERATIONS, INCLUDING UTILITY RELOCATIONS AND ADJUSTMENTS OF OTHER CONTRACTORS WORKING WITHIN THE LIMITS OF THE PROJECT AND ADJACENT TO THE PROJECT. CONTRACTOR IS TO COORDINATE WITH SITE SUPERVISOR AND OPERATIONS SHALL TAKE PRECEDENCE OVER CONTRACTOR'S WORK.
- TWO WEEKS PRIOR TO PLACEMENT OF PERMANENT PAVEMENT MARKINGS ON IDOT ARTERIAL ROADS, THE ENGINEER SHALL CONTACT ERIC CAMPOS, AREA TRAFFIC FIELD TECHNICIAN AT (815) 485-6475.
- THE CONTRACTOR SHALL CONTACT KALPANA KANNAN-HOSADURGA, THE DISTRICT ONE TRAFFIC CONTROL SUPERVISOR, AT Kalpana.Kannan-Hosadurga@illinois.gov A MINIMUM OF 72 HOURS IN ADVANCE OF BEGINNING WORK.
- THE CONTRACTOR SHALL REQUEST AND GAIN APPROVAL FROM THE ILLINOIS DEPARTMENT OF TRANSPORTATION'S EXPRESSWAY TRAFFIC OPERATIONS ENGINEER AT WWW.IDOTLCS.COM TWENTY-FOUR (24) HOURS IN ADVANCE OF ALL DAILY LANE, RAMP AND SHOULDER CLOSURES AND 7 DAYS IN ADVANCE OF ALL PERMANENT AND WEEKEND CLOSURES ON ALL FREEWAYS AND/OR EXPRESSWAYS IN DISTRICT ONE.

**INDEX OF SHEETS**

- |        |   |
|--------|---|
| 1      | COVER SHEET                                       |
| 2      | GENERAL NOTES, INDEX OF SHEETS, STANDARD DRAWINGS |
| 3      | SUMMARY OF QUANTITIES                             |
| 4      | PROPOSED PATCHING PLAN                            |
| 5 - 8  | STRUCTURAL PLANS                                  |
| 9 - 14 | D1 HIGHWAY STANDARDS                              |

**IDOT STANDARD DRAWINGS**

STANDARD NUMBERS	DESCRIPTION
000001-08	STANDARD SYMBOLS, ABBREVIATIONS AND PATTERNS
001006	DECIMAL OF AN INCH AND OF A FOOT
701106-02	OFF-ROAD OPERATIONS, MORE THAN 15' (4.5 m) AWAY
701201-05	LANE CLOSURE, 2L, 2W, DAY ONLY, FOR SPEEDS >= 45 MPH
701400-12	APPROACH TO LANE CLOSURE, FREEWAY/EXPRESSWAY
701401-13	LANE CLOSURE, FREEWAY/EXPRESSWAY
701411-09	LANE CLOSURE, MULTILANE, AT ENTRANCE OR EXIT RAMP, FOR SPEEDS >= 45 MPH
701428-01	TRAFFIC CONTROL, SETUP AND REMOVAL, FREEWAY/EXPRESSWAY
701446-11	TWO LANE CLOSURE, FREEWAY/EXPRESSWAY
701501-06	URBAN LANE CLOSURE, 2L, 2W, UNDIVIDED
701901-09	TRAFFIC CONTROL DEVICES

**DISTRICT 1 STANDARD DRAWINGS**

STANDARD NUMBERS	DESCRIPTION
BD-22	PAVEMENT PATCHING FOR HMA SURFACED PAVEMENT
TC-08	ENTRANCE AND EXIT RAMP CLOSURE DETAILS
TC-09	TRAFFIC CONTROL AND DETAILS FOR FREEWAY SINGLE AND MULTI-LANE WEAVE
TC-13	DISTRICT 1 TYPICAL PAVEMENT MARKINGS
TC-17	TRAFFIC CONTROL DETAILS FOR FREEWAY SHOULDER CLOSURES AND PARTIAL RAMP CLOSURES
TC-22	ARTERIAL ROAD INFORMATION SIGN

GOUGAR ROAD HOT-MIX ASPHALT MIXTURE REQUIREMENTS		
MIXTURE TYPE	AIR VOIDS @ NDES	QMP
HMA OVERLAY		
POLYMERIZED HOT-MIX ASPHALT SURFACE COURSE, MIX "D", N50, 1¾"	4.0% @ 70 GYR	QC/QA
PATCHING		
CLASS D PATCH (HMA BINDER IL-19.0)	4.0% @ 70 GYR	QC/QA
QMP DESIGNATIONS: QUALITY CONTROL/QUALITY ASSURANCE (QC/QA)		

**MIXTURE TABLE NOTES**

- THE UNIT WEIGHT USED TO CALCULATE ALL HMA SURFACE MIXTURE QUANTITIES IS 112 LBS/SQ YD/IN.
- THE "AC" TYPE FOR POLYMERIZED HMA MIXES SHALL BE "SBS/SBR PG 76-22" AND FOR NON POLYMERIZED HMA THE "AC TYPE" SHALL BE "PG 64-22" UNLESS MODIFIED BY RECLAIMED MATERIALS SPECIFICATIONS.

MO:\EL\General Notes [Sheet]  
 FILE NAME: P:\transys\transys\ppl\checked\Documents\Projects\_2018\C40118002704-43\PCAD\02\W42\_Gougar\_Rd\_Bridge\_Rehab\04-Sheets\01-Civil\02\W42-cht-gnnotes\_01.dgn



USER NAME = Michael.Czerpak	DESIGNED - MC	REVISED -
PLOT SCALE = 0.16666667 ' / in.	DRAWN - MC	REVISED -
PLOT DATE = 2/8/2024	CHECKED - PK	REVISED -
	DATE - 01/26/2024	REVISED -

**STATE OF ILLINOIS  
DEPARTMENT OF TRANSPORTATION**

**GENERAL NOTES  
INDEX OF SHEETS AND STANDARD DRAWINGS**

SCALE: SHEET 1 OF 1 SHEETS STA. TO STA.

F.A.U. RTE.	SECTION	COUNTY	TOTAL SHEETS	SHEET NO.
367	(99-4-1HB-2) BR 23	WILL	14	2
CONTRACT NO. 62W42				
ILLINOIS FED. AID PROJECT				

CODE NO.	ITEM	UNIT	TOTAL QUANTITY	CONSTRUCTION CODE
				90% FED/10% STATE
				BRIDGE REHABILITATION
				0013
				URBAN
SN. 099-0203				
40600290	BITUMINOUS MATERIALS (TACK COAT)	POUND	286	286
40600985	PORTLAND CEMENT CONCRETE SURFACE REMOVAL - BUTT JOINT	SQ YD	23	23
40603535	POLYMERIZED HOT-MIX ASPHALT SURFACE COURSE, MIX "D", N50	TON	62	62
44201721	CLASS D PATCHES, TYPE III, 6 INCH	SQ YD	35	35
67100100	MOBILIZATION	L SUM	1	1
* 78000200	THERMOPLASTIC PAVEMENT MARKING - LINE 4"	FOOT	248	248
* 78004620	PREFORMED PLASTIC PAVEMENT MARKING, TYPE D - STANDARD - LINE 4"	FOOT	439	439
* 78009004	MODIFIED URETHANE PAVEMENT MARKING - LINE 4"	FOOT	439	439
X5017305	PROTECTIVE SHIELD (PERMANENT)	SQ YD	402	402
X5017309	PROTECTIVE SHIELD REMOVAL	L SUM	1	1
X7010216	TRAFFIC CONTROL AND PROTECTION, (SPECIAL)	L SUM	1	1
X7011015	TRAFFIC CONTROL AND PROTECTION (EXPRESSWAYS)	L SUM	1	1
Z0030850	TEMPORARY INFORMATION SIGNING	SQ FT	52	52

\* SPECIALTY ITEM

MODEL: Summary of Quantities (Sheet)  
 FILE NAME: p:\transys\temp\p\transys\corp\p\1-hosted\Documents\Projects\_2018\C401140118002704-EXP\CAD\DWG\42-Gaugar Rd Bridge Rehab\04-Sheets\01-Civil\62W42-ht-500\_01.dgn



USER NAME = Michael.Czerpak	DESIGNED - MC	REVISED -
PLOT SCALE = 0.16666667 ' / in.	DRAWN - MC	REVISED -
PLOT DATE = 1/26/2024	CHECKED - PK	REVISED -
	DATE - 01/26/2024	REVISED -

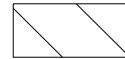
**STATE OF ILLINOIS  
DEPARTMENT OF TRANSPORTATION**

**SUMMARY OF QUANTITIES**

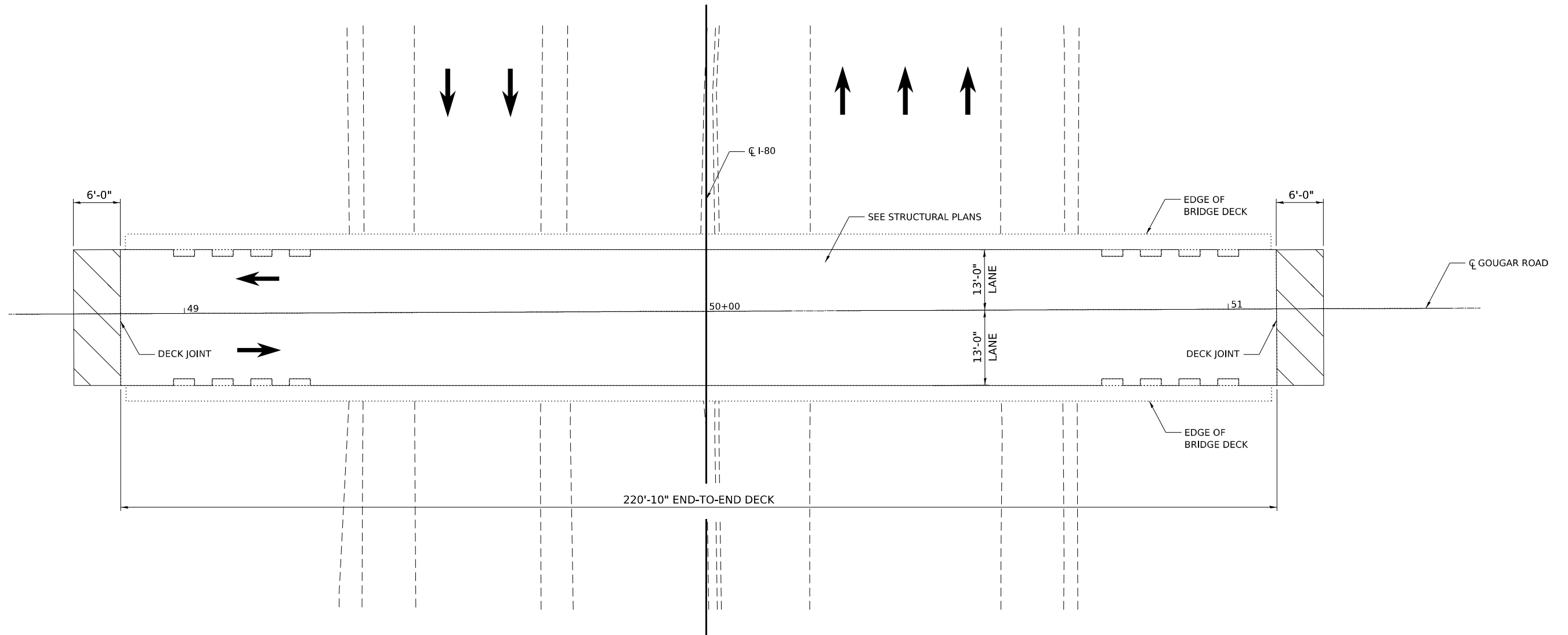
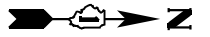
SCALE: SHEET 1 OF 1 SHEETS STA. TO STA.

F.A.U. RTE.	SECTION	COUNTY	TOTAL SHEETS	SHEET NO.
367	(99-4-1HB-2) BR 23	WILL	14	3
CONTRACT NO. 62W42				
ILLINOIS FED. AID PROJECT				

**LEGEND**



CLASS D PATCHES, TYPE III, 6 INCH (44201721)  
SEE DISTRICT 1 STANDARD DRAWING BD-22  
PAVEMENT PATCHING FOR HMA SURFACE PAVEMENT



Model: D:\default\p\transystems-pw\kentby.com\transyscorp\p\1-hatched\Documents\Projects\_2018\C40140118002704-EXP\CAD\DWG2\Gougar Rd Bridge Rehab\04-Sheets\01-Civil\62W42-cht-dbr\_01.dwg  
 FILE NAME:



USER NAME	= Michael.Czerpak
PLOT SCALE	=
PLOT DATE	= 1/26/2024

DESIGNED	- MC
DRAWN	- MC
CHECKED	- PK
DATE	- 01/26/2024

REVISED	-
REVISED	-
REVISED	-
REVISED	-

**STATE OF ILLINOIS  
DEPARTMENT OF TRANSPORTATION**

**PROPOSED PATCHING PLAN**

SCALE: SHEET 1 OF 1 SHEETS STA. TO STA.

F.A.U. RTE.	SECTION	COUNTY	TOTAL SHEETS	SHEET NO.
367	(99-4-1HB-2) BR 23	WILL	14	4
CONTRACT NO. 62W42				
ILLINOIS FED. AID PROJECT				



Benchmark: Chiseled "□" on concrete slab around median pier for Gougar Rd. bridge on SW corner of slab West side of bridge. Elev. 644.02

Existing Structure: SN 099-0203 was constructed in 1965 as Project I-80-4(44)138, Section 99-4-IHB-2 at Sta. 629+65.44 (I-80). The existing bridge is a continuous four-span steel rolled beam bridge supporting a non-composite reinforced concrete deck. The substructure consists of stub abutments and hammerhead piers, each abutment is supported by concrete piles and the piers are supported by creosoted timber piles. Span lengths are 43'-2", 67'-3", 67'-3" and 40'-2". The out-to-out deck width is 32'-0" and the overall structure length is 221'-6".

**GENERAL NOTES**

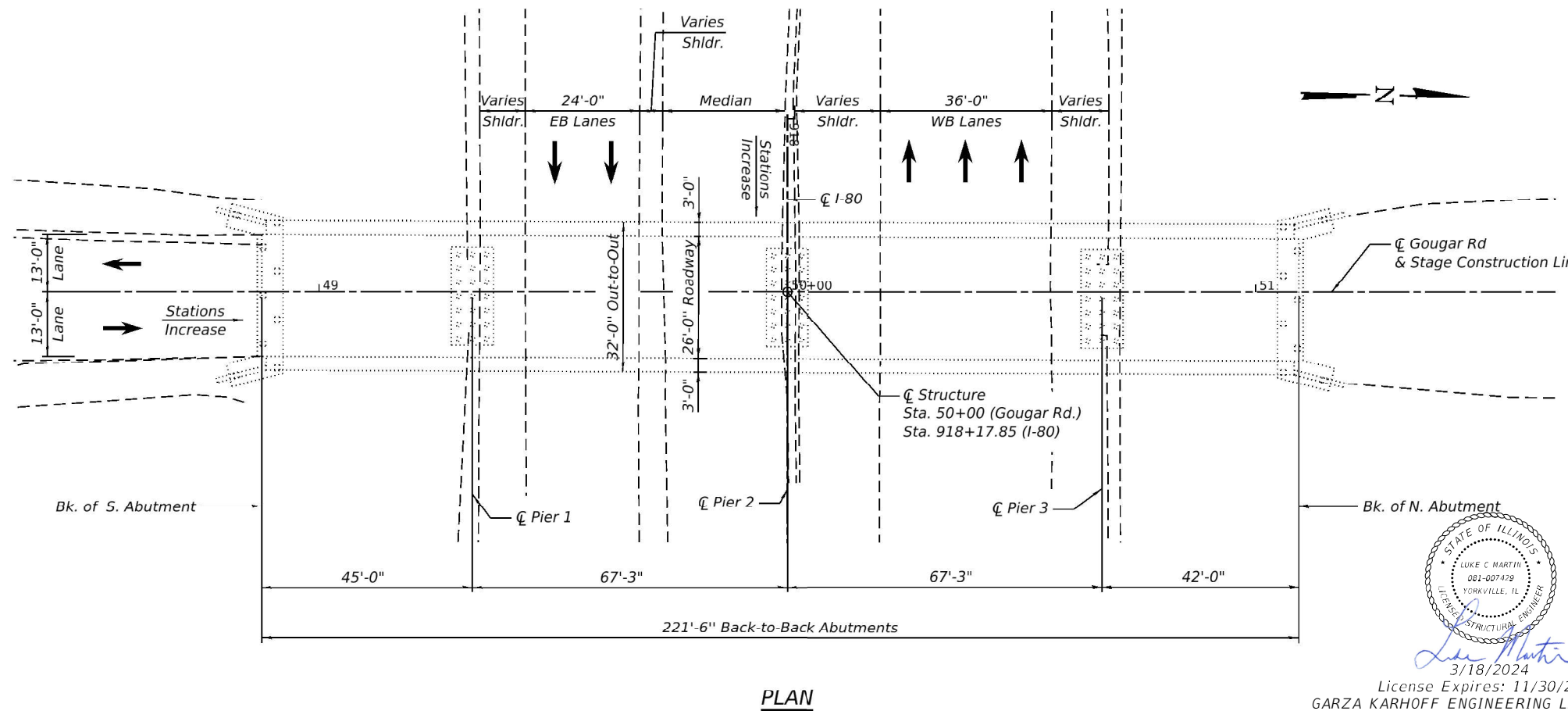
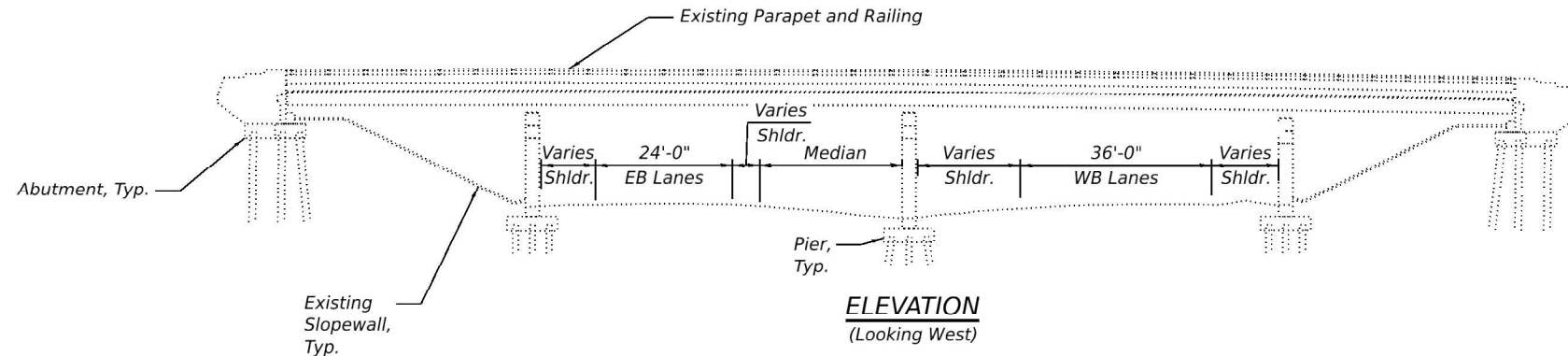
Traffic on Gougar Road shall be maintained using stage construction with one lane open to traffic.  
 Construction of butt joints, tack coat, and HMA overlay on the Gougar Road bridge shall be completed in one day for each stage construction.  
 Plan dimensions and details relative to existing plans are subject to nominal construction variations. The Contractor shall field verify existing dimensions and details affecting new construction and make necessary approved adjustments prior to construction or ordering of materials. Such variations shall not be cause for additional compensation for a change in scope of the work, however, the Contractor will be paid for the quantity actually furnished at the unit price bid for the work.

**SCOPE OF WORK**

1. Construct HMA bridge deck overlay using stage construction
2. Replace Permanent Protective Shield

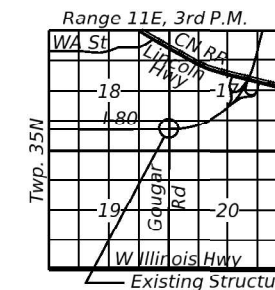
**INDEX OF SHEETS**

1. General Plan & Elevation
2. Deck Overlay Plan and Details
3. Permanent Protective Shield Plan
4. Permanent Protective Shield Details



**BILL OF MATERIAL**

Item	Unit	Total
Portland Cement Concrete Surface Removal - Butt Joint	Sq. Yd.	23
Polymerized Hot-Mix Asphalt Surface Course, Mix "D" N50	Ton	62
Bituminous Materials (Tack Coat)	Pound	286
Protective Shield (Permanent)	Sq. Yd.	402
Protective Shield Removal	L. Sum	1



**GENERAL PLAN & ELEVATION**  
**GOUGAR RD. OVER I-80**  
**F.A.U. ROUTE 367**  
**SEC. (99-4-1HB-2) BR 23**  
**WILL COUNTY**  
**STA. 50+00.00**  
**STRUCTURE NO. 099-0203**

STATE OF ILLINOIS  
 LUKE C MARTIN  
 081-007479  
 YORKVILLE, IL  
 LICENSED PROFESSIONAL ENGINEER  
 3/18/2024  
 License Expires: 11/30/2024  
 GARZA KARHOFF ENGINEERING LLC is Illinois  
 Professional Design Firm No. 184-005358

STATE OF ILLINOIS  
 DEPARTMENT OF TRANSPORTATION

GENERAL PLAN & ELEVATION  
 STRUCTURE NO. 099-0203

SHEET S1 OF S4 SHEETS

F.A.U. RTE.	SECTION	COUNTY	TOTAL SHEETS	SHEET NO.
367	(99-4-1HB-2) BR 23	WILL	14	5
			CONTRACT NO. 62W42	

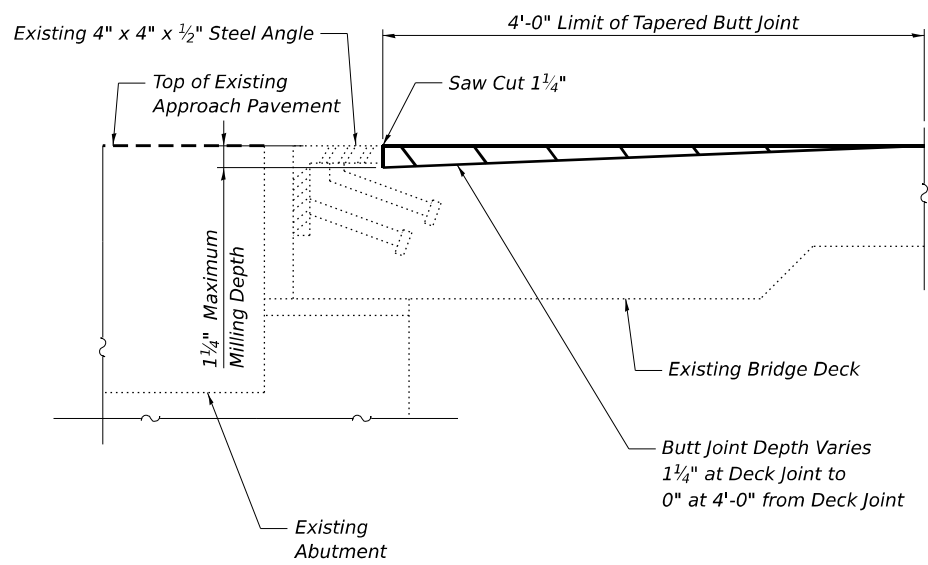
ILLINOIS FED. AID PROJECT

MODEL: Default  
 FILE NAME: \$\$\$FILE\$\$\$\$

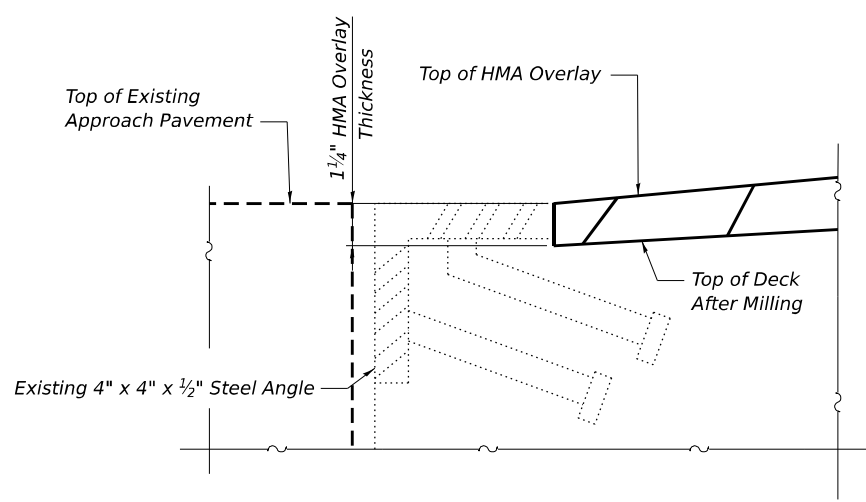
garza karhoff  
 ENGINEERING, LLC

USER NAME =	DESIGNED - JSR	REVISED -
	CHECKED - LM	REVISED -
PLOT SCALE =	DRAWN - JSR	REVISED -
PLOT DATE =	DATE - 12/01/2023	REVISED -

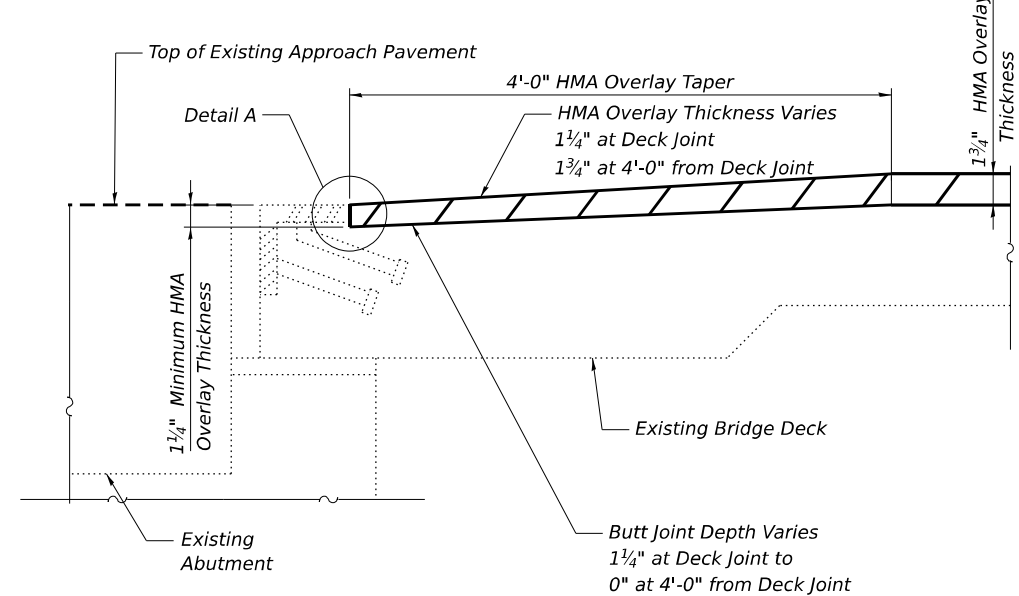
3/18/2024 3:42:00 PM



**SECTION A-A REMOVAL**


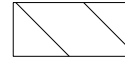



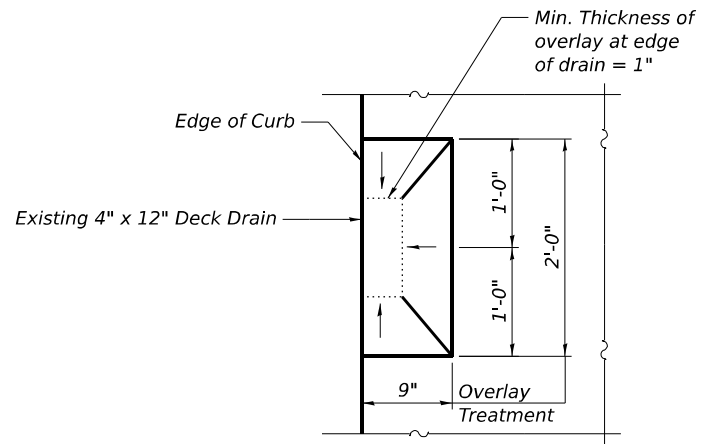
**DETAIL A**



**SECTION A-A OVERLAY**

**LEGEND**

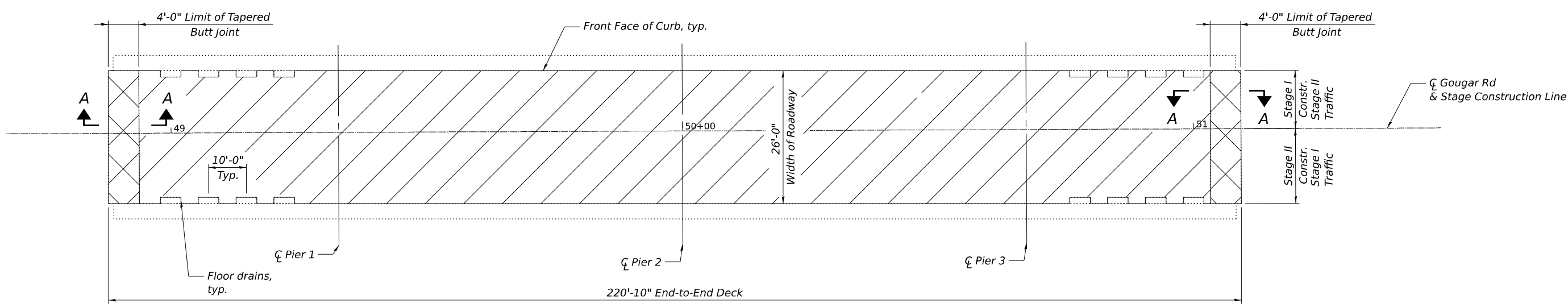
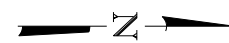
-  Limits of HMA Overlay
-  Limits of Portland Cement Concrete Surface Removal - Butt Joint
-  Limits of Portland Cement Concrete Surface Removal - Butt Joint and HMA Overlay



**OVERLAY TREATMENT AT DRAINS**

**BILL OF MATERIAL**

Item	Unit	Total
Portland Cement Concrete Surface Removal - Butt Joint	Sq. Yd	23
Polymerized Hot-Mix Asphalt Surface Course, Mix "D" N50	Ton	62
Bituminous Materials (Tack Coat)	Pound	286



**DECK OVERLAY PLAN**

MODEL: Default  
FILE NAME: \$FILEL\$



USER NAME =	DESIGNED - JSR	REVISED -
	CHECKED - LM	REVISED -
PLOT SCALE =	DRAWN - JSR	REVISED -
PLOT DATE =	DATE - 12/01/2023	REVISED -

**STATE OF ILLINOIS  
DEPARTMENT OF TRANSPORTATION**

**DECK OVERLAY PLAN AND DETAILS  
STRUCTURE NO. 099-0203**

SHEET 52 OF 54 SHEETS

F.A.U. RTE.	SECTION	COUNTY	TOTAL SHEETS	SHEET NO.
367	(99-4-1HB-2) BR 23	WILL	14	6
CONTRACT NO. 62W42				

ILLINOIS FED. AID PROJECT

**LEGEND**

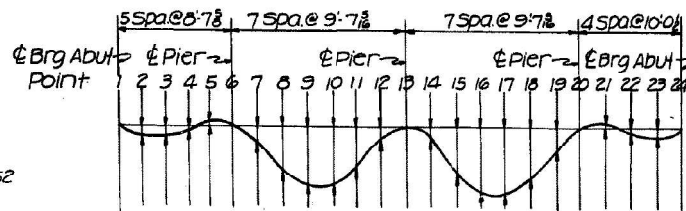
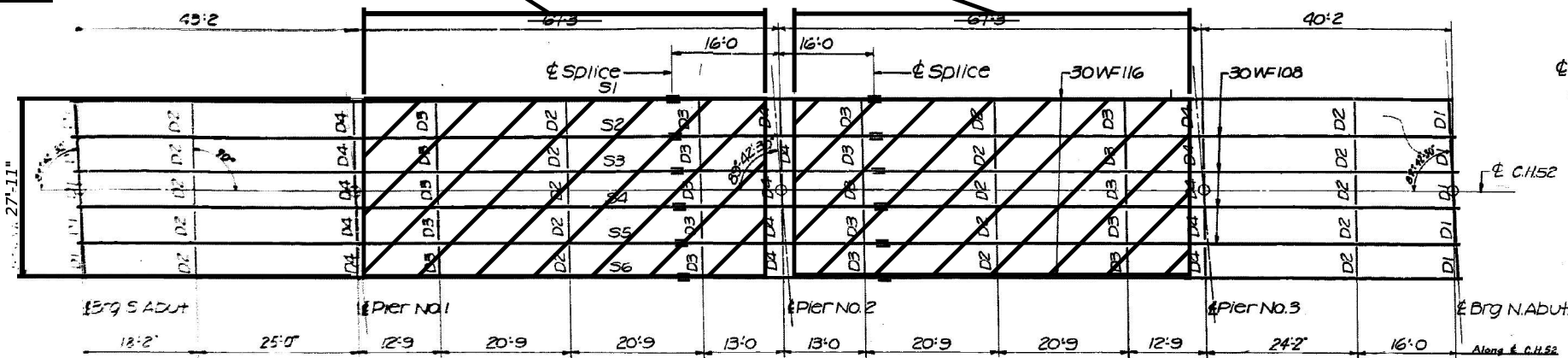
Protective Shield

64'-9" (Face to Face of Pier)

64'-9" (Face to Face of Pier)

STATE OF ILLINOIS  
DEPARTMENT OF PUBLIC WORKS & BUILDINGS  
DIVISION OF HIGHWAYS

ROUTE NO.	SECTION	COUNTY	TOTAL SHEETS	SHEET NO.
F.A.I. 80	99-4	WILL	22	8
FEB. 1988 BY: BR. 7		ILLINOIS PROJECT:		



Note: Plan dimensions are in a horizontal plane

**PLAN OF STRUCTURAL STEEL**

7/8" Vent holes at 12" cts, 1/8" ga  
L4"x4"x2"  
3/8" holes at 12" cts for 3/8" bolts set on normal gage line. All bolts shall be burned, sawed or chipped off flush with the back of angles after forms are removed.

Δ = Dead Load Deflection in feet due to weight of slab (and parapet for S1 & S6). + = a downward deflection; - = an upward deflection.

Pt.	Δ
1	0.000
2	+0.08
3	+0.09
4	+0.05
5	+0.02
7	+0.14
8	+0.08
9	+0.05
10	+0.00
11	+0.03
12	+0.08
14	+0.09
15	+0.08
16	+0.06
17	+0.08
18	+0.01
19	+0.17
21	-0.04
22	+0.02
23	+0.01

**DEAD LOAD DEFLECTIONS**

**TABLE OF "I" DIMENSIONS**

Stringer	1	2	3	4	5	6
S Abut	-	-	-	-	-	-
Pier No. 1	-	-	-	-	-	-
Pier No. 2	-	-	-	-	-	-
Pier No. 3	-	-	-	-	-	-
N. Abut	-	-	-	-	-	-

**TABLE OF COVER PLATE DIMENSIONS**

Stringer	Cover Plate Size			Pier 1		Pier 2		Pier 3	
	Pier 1	Pier 2	Pier 3	A	B	A	B	A	B
S1 & S6	8x2	8x2	8x2	6'-6"	5'-0"	7'-9"	6'-3"	6'-6"	5'-0"
S2 & S5	8x2	8x2	8x2	4'-6"	3'-0"	6'-3"	4'-9"	4'-6"	3'-0"

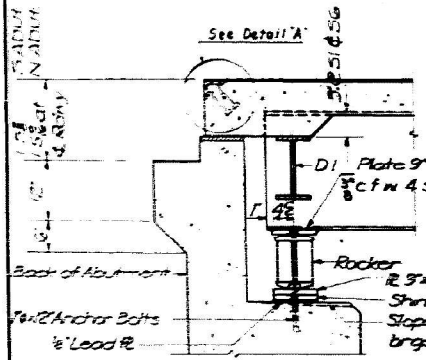
**FRAMING PLAN AND STEEL DETAILS**

**CH 52**

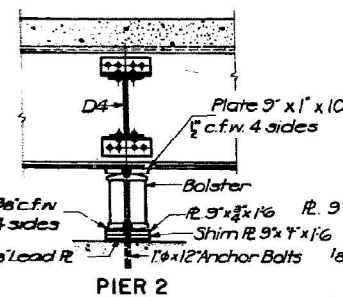
**OVER F.A.I. 80**

STA. 629+65.44

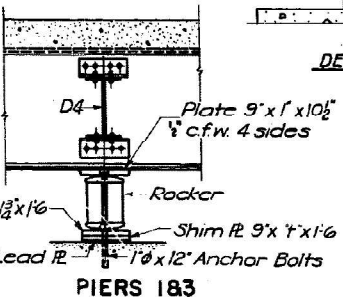
F.A.I. ROUTE 80  
SECTION 99-4-1HB-2  
Scale: NO SCALE  
BLAUVELT ENGINEERING CO.  
WOODBURY, N. J.  
NEW YORK, N. Y.  
CRYSTAL LAKE, ILL.



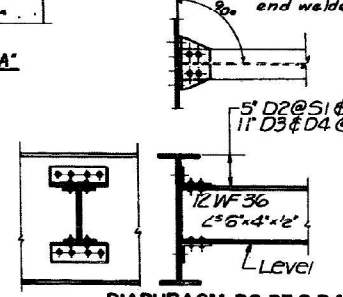
SECTION AT ABUTMENT



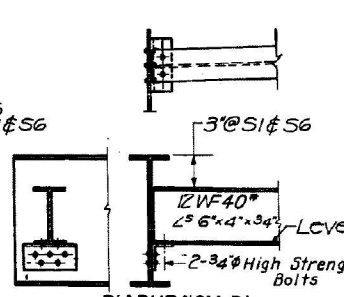
PIER 2



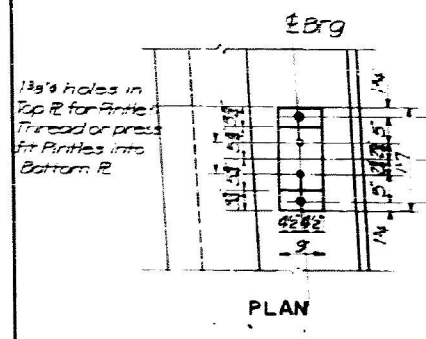
PIERS 1&3



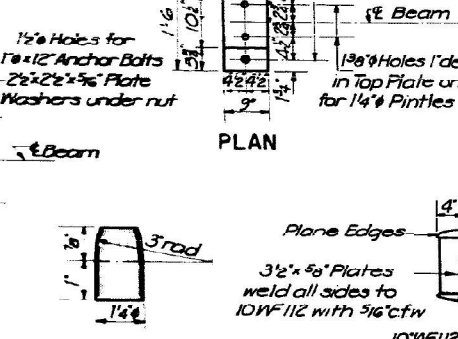
DIAPHRAGM D2, D3 & D4



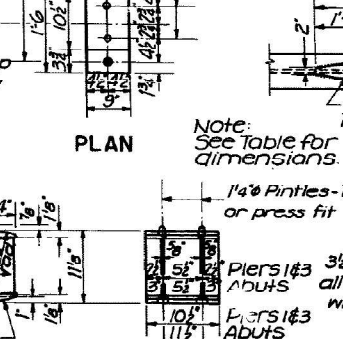
DIAPHRAGM D1



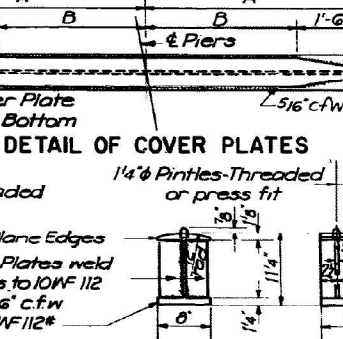
PLAN



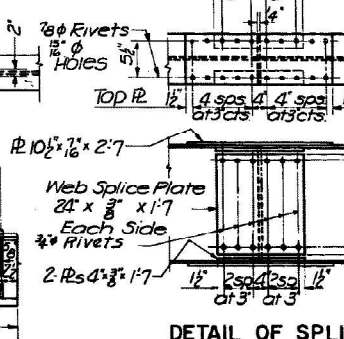
PLAN



PLAN



DETAIL OF COVER PLATES



DETAIL OF SPLICE

DETAIL OF PINTLE

DETAIL OF BEARING AT PIERS 1&3 AND ABUTS TOP OF FLANGE ELEVATIONS

DETAIL OF BEARING AT PIER 2

Str.	Pt.	S. Abut.	Pier 1	Splice 1	Pier 2	Splice 2	Pier 3	N. Abut.	Pier 1	Pier 3
S1	665.06	665.21	665.08	664.99	664.86	664.26	663.57	665.71	664.16	664.26
S2	665.16	665.31	665.18	665.07	664.76	664.36	663.67	665.21	664.26	664.26
S3	665.21	665.36	665.23	665.14	665.01	664.41	663.72	665.26	664.31	664.31
S4	665.21	665.36	665.23	665.14	665.01	664.41	663.72	665.26	664.31	664.31
S5	665.16	665.31	665.18	665.07	664.76	664.36	663.67	665.21	664.26	664.26
S6	665.06	665.21	665.08	664.99	664.86	664.26	663.57	665.11	664.16	664.16

DESIGNED	JR
CHECKED	CS
DRAWN	SEF
CHECKED	JR

Rev. 2: 6/3/05 Rev. Plan of Str Steel, Splice 1, Splice 2, Pier 1, Pier 2, Pier 3, N. Abut, Pier 1, Pier 3. Added detail of Abut. Cant Slab showing rein. bars.

Rev. 2: 6/3/05 Rev. Plan of Str Steel, Splice 1, Splice 2, Pier 1, Pier 2, Pier 3, N. Abut, Pier 1, Pier 3. Added detail of Abut. Cant Slab showing rein. bars.

\*Indicates AS-BUILT \*Indicates AS-AWARDED

MODEL: Default  
FILE NAME: S5FILE.S5

garza karhoff  
ENGINEERING, LLC

USER NAME =	DESIGNED - JSR	REVISIONS
	CHECKED - LM	REVISIONS
PLOT SCALE =	DRAWN - JSR	REVISIONS
PLOT DATE =	DATE - 12/01/2023	REVISIONS

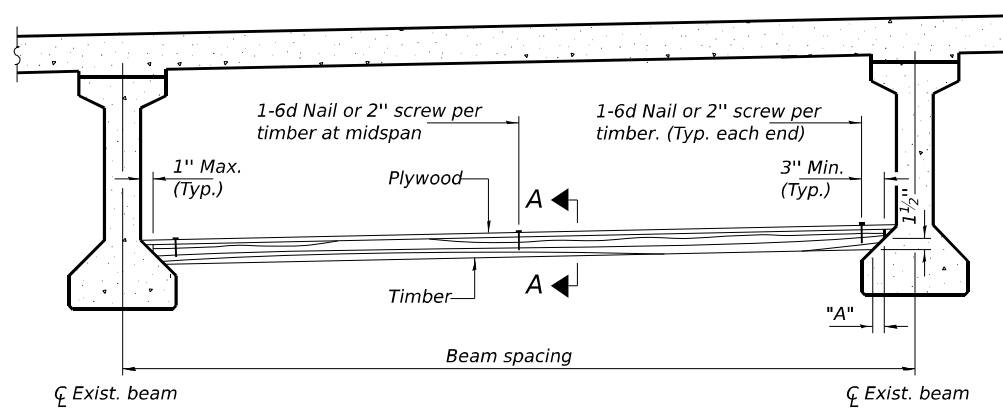
STATE OF ILLINOIS  
DEPARTMENT OF TRANSPORTATION

PERMANENT PROTECTIVE SHIELD PLAN  
STRUCTURE NO. 099-0203

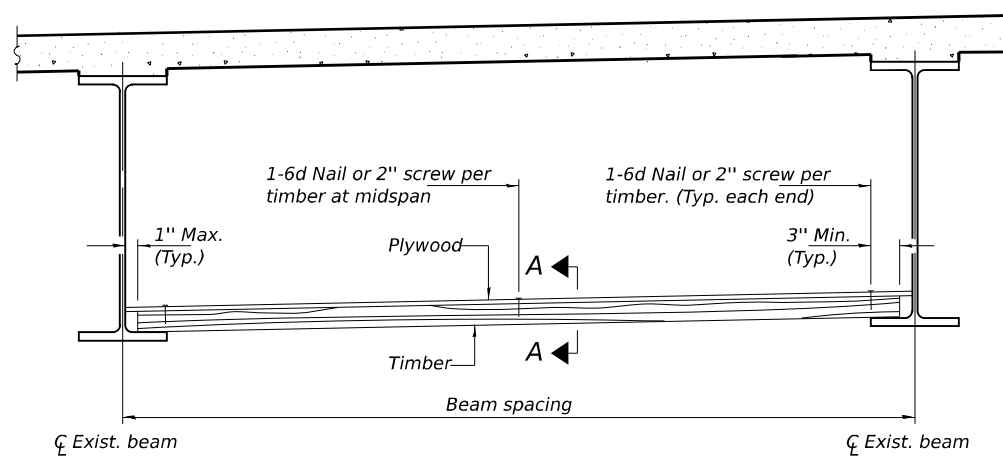
SHEET 53 OF 54 SHEETS

F.A.U. R.T.E.	SECTION	COUNTY	TOTAL SHEETS	SHEET NO.
367	(99-4-1HB-2) BR 23	WILL	14	7
CONTRACT NO. 62W42			ILLINOIS FED. AID PROJECT	

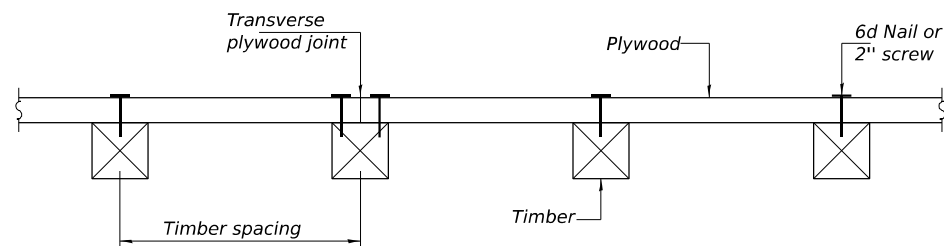
STATE OF ILLINOIS  
DEPARTMENT OF TRANSPORTATION



**PPC I-BEAMS AND BULB-T'S**



**STEEL BEAMS**



**SECTION A-A**

**TIMBER SPACING**

Beam Spacing (ft.)	Timber Sizes (in.)		
	4" x 4" with min. Fb=775 psi Fv=135 psi	4" x 6" with min. Fb=775 psi Fv=135 psi	6" x 6" with min. Fb=575 psi Fv=125 psi
	Maximum Timber Spacing (in.)		
4.5	16	16	16
4.75	16	16	16
5.0	16	16	16
5.25	16	16	16
5.5	16	16	16
5.75	16	16	16
6.0	16	16	16
6.25	12	16	16
6.5	12	16	16
6.75	12	16	16
7.0	8	16	16
7.25	8	16	16
7.5	8	16	16
7.75	8	16	16
8.0	8	12	16
8.25	8	12	16
8.5	6	12	12
8.75	6	12	12
9.0	6	8	12

**PPC I-BEAMS AND BULB-T'S**

BEAM	"A"
36" I-Beam	1 1/2"
42" I-Beam	1 1/2"
48" I-Beam	1 1/2"
54" I-Beam	1 5/8"
63" Bulb-T	3 3/8"
72" Bulb-T	3 3/8"

**Notes:** See special provision for Permanent Protective Shield System.

Timber sizes shown are nominal sizes. Rough sawn timber of the dimensions shown will also be considered acceptable.

The minimum Fb and Fv values shown are the tabulated design values given in the National Design Specification for Wood Construction for No. 2 Spruce-Pine-Fir without adjustment factors applied. Better grades or other species with equal or higher allowable stresses will also be considered acceptable.

The timber spacings shown have been determined using allowable stresses with all adjustment factors necessary for the anticipated service conditions. All timber shall be treated.

Plywood shall be 5/8" rated Exterior type plywood by APA.

Plywood shall be placed such that the face grain is perpendicular to the timber supports. When less than a full sheet (4' width) of plywood is used, the width of the strip used shall not be less than 2'.

Transverse plywood joints shall be supported by timbers.

When 4" x 6" timbers are used, they shall be placed such that the wide face is horizontal and the narrow face is vertical.

Design load = 200 psf.

**BILL OF MATERIAL**

Item	Unit	Total
Protective Shield (Permanent)	Sq. Yd.	402

**PERMANENT PROTECTIVE SHIELD**

MODEL: Fujii Size  
FILE NAME: \$FILEL\$

PPS-1 01-22-09

**garza karhoff**  
ENGINEERING, LLC

USER NAME =	DESIGNED - JSR	REVISED -
	CHECKED - LM	REVISED -
PLOT SCALE =	DRAWN - JSR	REVISED -
PLOT DATE =	DATE - 12/01/2023	REVISED -

STATE OF ILLINOIS  
DEPARTMENT OF TRANSPORTATION

PERMANENT PROTECTIVE SHIELD DETAILS  
STRUCTURE NO. 099-0203

SHEET 54 OF 54 SHEETS

F.A.U. RTE.	SECTION	COUNTY	TOTAL SHEETS	SHEET NO.
367	(99-4-1HB-2) BR 23	WILL	14	8
CONTRACT NO. 62W42				
ILLINOIS FED. AID PROJECT				

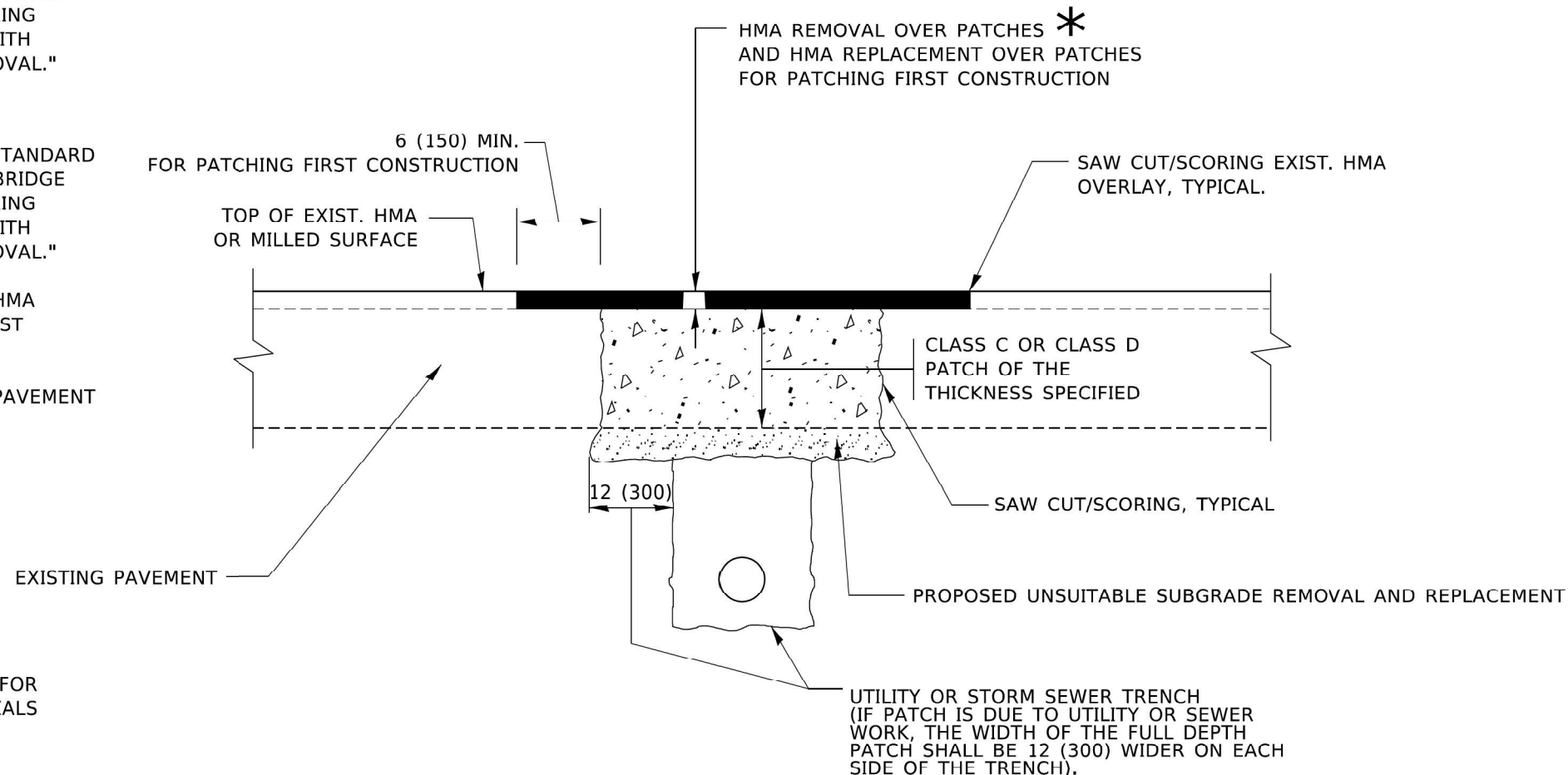


**METHOD OF MEASUREMENT**

REFER TO SECTION 442 OF THE STANDARD SPECIFICATIONS FOR ROAD AND BRIDGE CONSTRUCTION AND THE RECURRING SPECIAL PROVISION "PATCHING WITH HOT-MIX ASPHALT OVERLAY REMOVAL."

**BASIS OF PAYMENT**

1. REFER TO SECTION 442 OF THE STANDARD SPECIFICATIONS FOR ROAD AND BRIDGE CONSTRUCTION AND THE RECURRING SPECIAL PROVISION "PATCHING WITH HOT-MIX ASPHALT OVERLAY REMOVAL."
2. SAW CUT/SCORING OF EXISTING HMA OVERLAY IS INCLUDED IN THE COST OF PAVEMENT PATCHING.
3. SAW CUT/SCORING OF EXISTING PAVEMENT IS INCLUDED IN THE COST OF PAVEMENT PATCHING.



**SEQUENCE OF CONSTRUCTION (PATCHING FIRST)**

1. REMOVE THE EXISTING HMA MATERIAL OVER THE AREA TO BE PATCHED.
2. REMOVE AND REPLACE WITH CLASS C OR D PATCH.
3. REPLACE HMA MATERIAL OVER THE AREA TO BE PATCHED.

**SEQUENCE OF CONSTRUCTION (MILLING FIRST)**

1. MILL HMA FIRST IF THERE IS AT LEAST 4½ INCHES OR MORE OF HMA MATERIAL ON TOP OF THE EXISTING PAVEMENT OR IF THE PAVEMENT IS FULL DEPTH HMA. A MINIMUM OF 2 INCHES OF HMA MATERIAL SHALL BE IN PLACE AFTER MILLING.
2. REMOVE AND REPLACE WITH FULL DEPTH CLASS D PATCHES TO TOP OF MILLED SURFACE.

ALL DIMENSIONS ARE IN INCHES (MILLIMETERS) UNLESS OTHERWISE SHOWN.

MODEL: Default  
FILE NAME: p:\projects\transys\transys\ppl\hosted\Documents\Projects\_2018\C401\40118002704-EP\CAD\DWG\42\_Gougar\_Rd\_Bridge\_Rehab\04-Sheets\01-Civil\621W42-ht-D1standards\_01.dgn

USER NAME = Lawrence,DeManche	DESIGNED - R. SHAH	REVISED - R. BORO 01-01-07	<b>STATE OF ILLINOIS DEPARTMENT OF TRANSPORTATION</b>	<b>PAVEMENT PATCHING FOR HMA SURFACED PAVEMENT</b>			F.A. RTE.	SECTION	COUNTY	TOTAL SHEETS	SHEET NO.	
PLOT SCALE = 100,0000 ' / in.	CHECKED -	REVISED - R. BORO 09-04-07		SCALE: NONE	SHEET 1	OF 1 SHEETS	STA.	TO STA.	<b>BD400-04 (BD-22)</b>			
PLOT DATE = 11/18/2022	DATE - 10-25-94	REVISED - K. ENG 10-27-08		CONTRACT NO.								
		REVISED - K. SMITH 11-18-22		ILLINOIS FED. AID PROJECT								

MODEL: General Notes [Sheet]  
FILE NAME: p:\projects\transys\transys\ppl\hosted\Documents\Projects\_2018\C401\40118002704-EP\CAD\DWG\42\_Gougar\_Rd\_Bridge\_Rehab\04-Sheets\01-Civil\621W42-ht-D1standards\_01.dgn

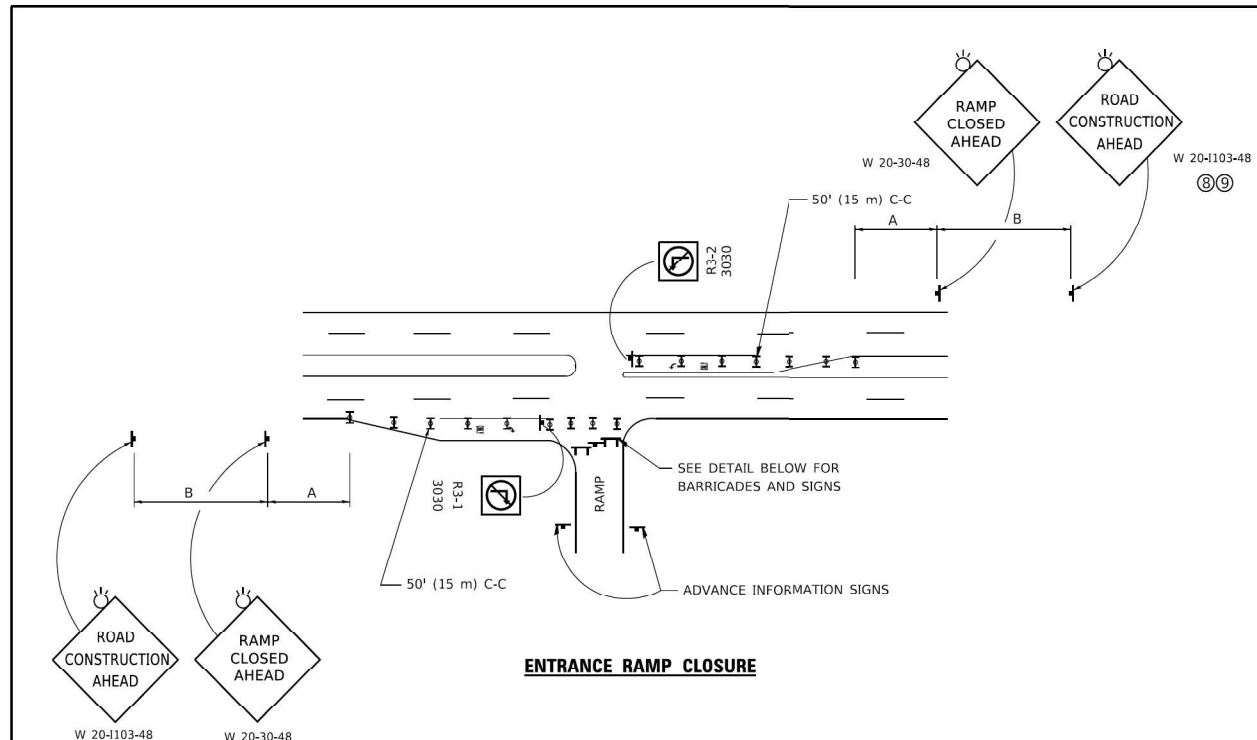


USER NAME = Michael.Czerpak	DESIGNED - MC	REVISED -
PLOT SCALE = 0.16666667 ' / in.	CHECKED - PK	REVISED -
PLOT DATE = 1/26/2024	DATE - 01/26/2024	REVISED -

**STATE OF ILLINOIS  
DEPARTMENT OF TRANSPORTATION**

**PAVEMENT PATCHING FOR  
HMA SURFACED PAVEMENT**

SCALE:	SHEET 1	OF 6 SHEETS	STA.	TO STA.	F.A. RTE.	SECTION	COUNTY	TOTAL SHEETS	SHEET NO.
					367	(99-4-1HB-2) BR 23	WILL	14	9
CONTRACT NO. 62W42									ILLINOIS FED. AID PROJECT

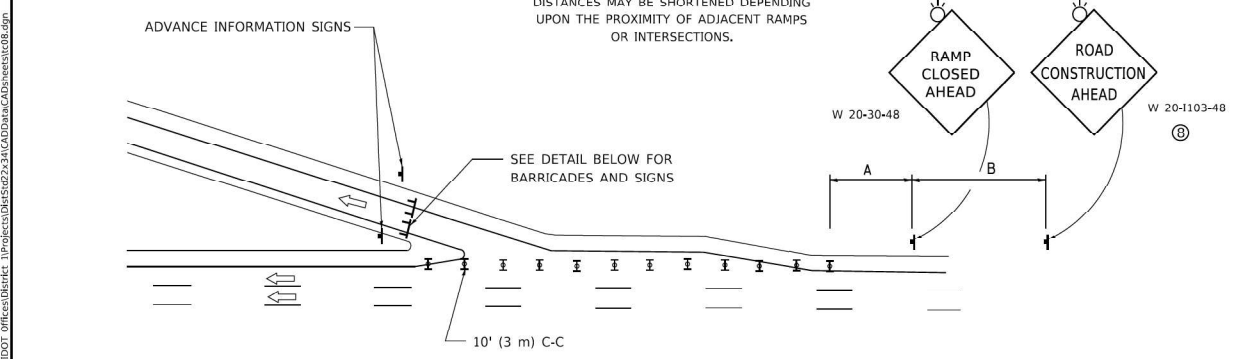


**ENTRANCE RAMP CLOSURE**

**SIGN SPACING TABLE**

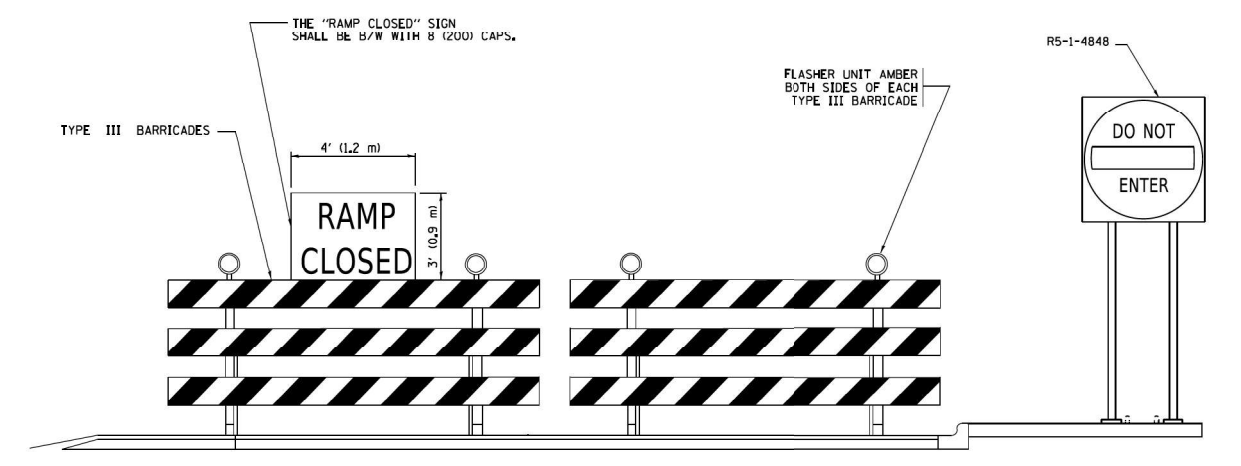
FACILITY	DISTANCE BETWEEN SIGNS	
	A	B
EXPRESSWAY >24 HOURS	1000' (300 m)	1500' (450 m)
EXPRESSWAY ≤24 HOURS	500' (150 m)	500' (150 m)
ARTERIAL 55 MPH	500' (150 m)	500' (150 m)
ARTERIAL 50-45 MPH	350' (100 m)	350' (100 m)
ARTERIAL <45 MPH	200' (60 m)	200' (60 m)

DISTANCES MAY BE SHORTENED DEPENDING UPON THE PROXIMITY OF ADJACENT RAMPS OR INTERSECTIONS.

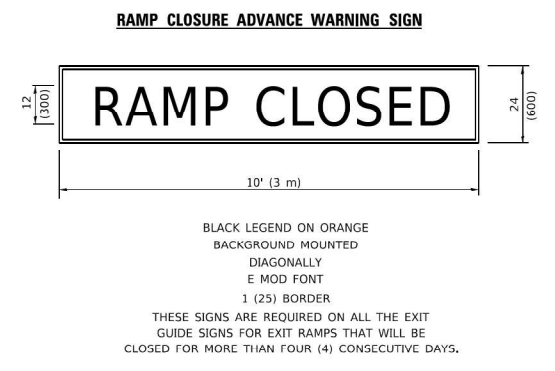


**EXIT RAMP CLOSURE**

- SYMBOLS**
- ▬ TYPE II BARRICADE OR DRUM
  - ▬ TYPE III BARRICADE WITH 2 FLASHING LIGHTS

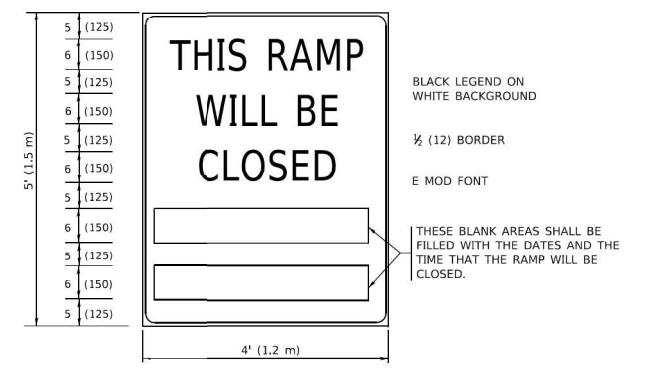


**DETAIL FOR REQUIRED BARRICADES & SIGNS**



**RAMP CLOSURE ADVANCE WARNING SIGN**

BLACK LEGEND ON ORANGE BACKGROUND MOUNTED DIAGONALLY  
E MOD FONT  
1 (25) BORDER  
THESE SIGNS ARE REQUIRED ON ALL THE EXIT GUIDE SIGNS FOR EXIT RAMPS THAT WILL BE CLOSED FOR MORE THAN FOUR (4) CONSECUTIVE DAYS.



**RAMP CLOSURE ADVANCE INFORMATION SIGN**

BLACK LEGEND ON WHITE BACKGROUND  
½ (12) BORDER  
E MOD FONT  
THESE BLANK AREAS SHALL BE FILLED WITH THE DATES AND THE TIME THAT THE RAMP WILL BE CLOSED.

THESE SIGNS ARE REQUIRED ON BOTH SIDES OF THE RAMP, MINIMUM OF 1 WEEK IN ADVANCE OF THE CLOSURE.  
THESE SIGNS SHALL BE FABRICATED AND PAID FOR ACCORDING TO THE TEMPORARY INFORMATION SIGNING SPECIAL PROVISION

**GENERAL NOTES:**

- ① CONES MAY BE SUBSTITUTED FOR DRUMS OR TYPE II BARRICADES DURING DAY OPERATIONS. CONES SHALL BE A MINIMUM OF 28 (700) HIGH.
- ② VERTICAL BARRICADES SHALL NOT BE USED FOR RAMP CLOSURES.
- ③ A FLAGGER SHALL BE POSITIONED AT EACH CLOSED RAMP THAT IS OPEN TO CONSTRUCTION VEHICLES, PRECEDED BY A W20-7 FLAGGER WARNING SIGN.
- ④ ALL ROUTE MARKERS AND TRAILBLAZER ASSEMBLIES WHICH DIRECT MOTORISTS TO A CLOSED ENTRANCE RAMP SHALL BE COVERED WHEN THE RAMP IS CLOSED FOR MORE THAN FOUR (4) DAYS.
- ⑤ THE SIGNING AND BARRICADING WHICH IS REQUIRED BY THIS DETAIL SHALL BE INCLUDED IN THE COST OF TRAFFIC CONTROL AND PROTECTION (EXPRESSWAYS).
- ⑥ AUTHORIZATION FROM THE DISTRICT'S BUREAU OF TRAFFIC IS REQUIRED FOR ALL RAMP CLOSURES.
- ⑦ THE RAMP CLOSURE ADVANCE INFORMATION SIGNS SHALL BE ERECTED IF THE CLOSURE TIME EXCEEDS TWENTY-FOUR (24) HOURS. ADDITIONAL ADVANCE WARNING SIGNS ON EXIT GUIDE SIGNING WILL BE REQUIRED FOR EXIT RAMP CLOSURES THAT EXCEED FOUR (4) DAYS IN LENGTH.
- ⑧ ROAD CONSTRUCTION AHEAD SIGNS MAY BE OMITTED WHEN THIS DETAIL IS USED IN CONJUNCTION WITH OTHER TRAFFIC CONTROL THAT ALREADY INCLUDES A ROAD CONSTRUCTION AHEAD SIGN.
- ⑨ ARTERIAL ROAD CONSTRUCTION AHEAD SIGNS SHALL BE INSTALLED ON THE LEFT SIDE OF TRAFFIC IF THE MEDIAN IS MORE THAN 10 FT WIDE.

ALL DIMENSIONS ARE IN INCHES (MILLIMETERS) UNLESS OTHERWISE SHOWN.

USER NAME = foctemj	DESIGNED - D.W.S.	REVISED - S.P.B._01-07
PLOT SCALE = 50.0000' / in.	DRAWN -	REVISED - S.P.B._12-09
PLOT DATE = 3/4/2019	CHECKED -	REVISED - M.D._06-13
	DATE - 02-83	REVISED - M.D._01-18

**STATE OF ILLINOIS  
DEPARTMENT OF TRANSPORTATION**

**ENTRANCE AND EXIT RAMP  
CLOSURE DETAILS**

SCALE: NONE SHEET 1 OF 1 SHEETS STA. TO STA.

F.A.U. RTE.	SECTION	COUNTY	TOTAL SHEETS	SHEET NO.
TC-08			CONTRACT NO.	
ILLINOIS FED. AID PROJECT				

MODEL: Default  
 FILE NAME: p:\projects\trans\trans\ppl\hosted\Documents\Projects\_2018\C401140118002704-EXP\CAD\DWG\42-Gougar\_Rd\_Bridge\_Rehab\04-Sheets\01-C401140118002704-EXP\CAD\DWG\42-ht-01.dwg  
 2/8/2019 10:22:12 AM User:foctemj

**garza karhoff  
ENGINEERING, LLC**

USER NAME = Michael.Czerpak	DESIGNED - MC	REVISED -
PLOT SCALE = 0.16666667' / in.	DRAWN - MC	REVISED -
PLOT DATE = 1/26/2024	CHECKED - PK	REVISED -
	DATE - 01/26/2024	REVISED -

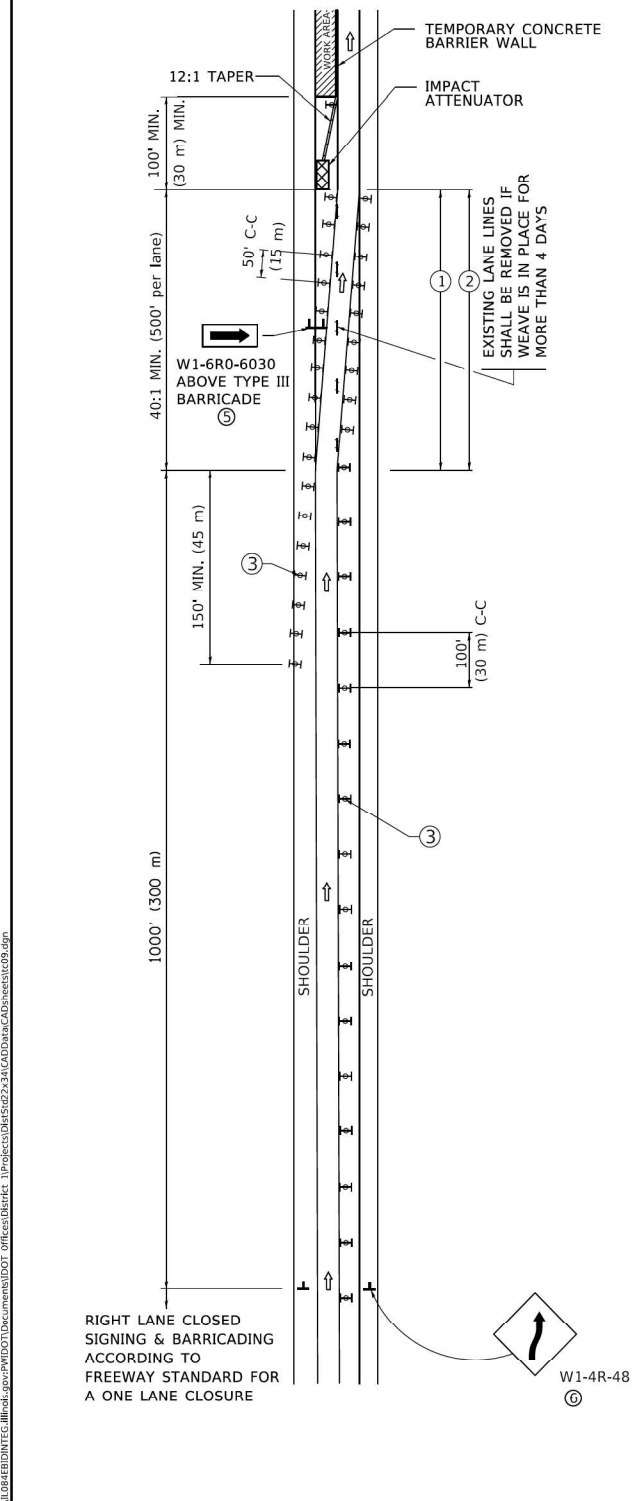
**STATE OF ILLINOIS  
DEPARTMENT OF TRANSPORTATION**

**ENTRANCE AND EXIT RAMP  
CLOSURE DETAILS**

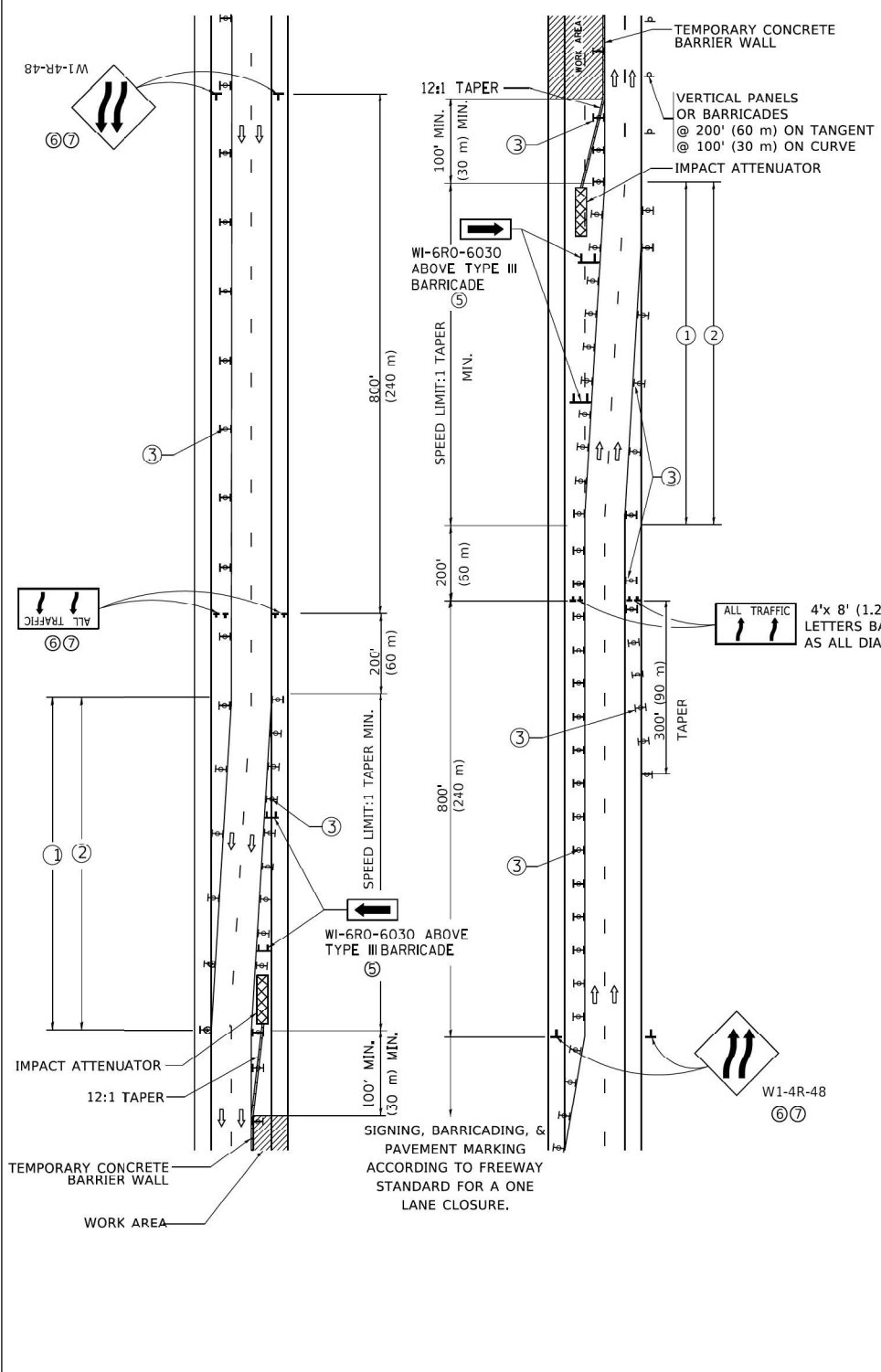
SCALE: SHEET 2 OF 6 SHEETS STA. TO STA.

F.A.U. RTE.	SECTION	COUNTY	TOTAL SHEETS	SHEET NO.
367	(99-4-1HB-2) BR 23	WILL	14	10
CONTRACT NO. 62W42				
ILLINOIS FED. AID PROJECT				

**SINGLE LANE WEAVE**

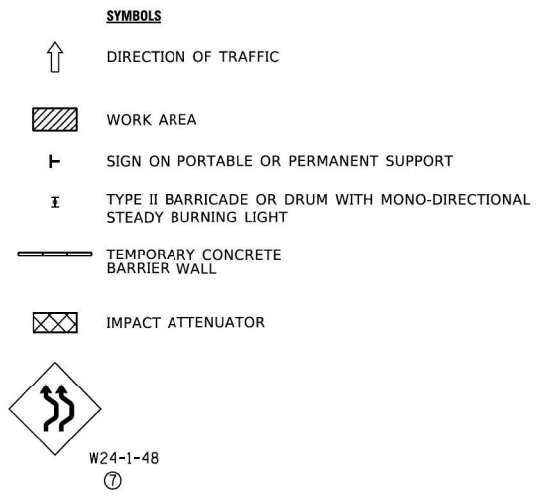


**MULTI-LANE WEAVE**



**GENERAL NOTES:**

- ① EXISTING CONFLICTING PAVEMENT MARKING LINES SHALL BE REMOVED. PAVEMENT MARKING REMOVAL SHALL NOT BE REQUIRED FOR SINGLE LANE WEAVES UNDER 4 DAYS IN DURATION.
- ② CONTINUOUS REFLECTIVE TEMPORARY PAVEMENT MARKING TAPE SHALL BE PLACED THROUGHOUT THE TAPER AND FOR 300' (90 m) ALONG SIDE THE WORK AREA WHERE THE CLOSURE TIME IS GREATER THAN FOURTEEN DAYS. THE LEFT EDGE LINE SHALL BE YELLOW AND THE RIGHT EDGE LINE SHALL BE WHITE. FOR MULTI-LANE WEAVES LANE LINES SHALL BE 5 INCH, 10'-30' (3 m-9 m) SKIP DASH, WHITE.
- ③ PLASTIC DRUMS WITH STEADY BURN LIGHTS AT 50' (15 m) C-C SPACING IN TAPERS AND 100' (30 m) C-C SPACING IN TANGENTS.
- ④ ALL SIGNS SHALL BE POST MOUNTED IF THE CLOSURE TIME EXCEEDS FOUR DAYS.
- ⑤ TYPE III BARRICADES MAY BE OMITTED FOR SINGLE-LANE WEAVES UNDER 24-HOURS IN DURATION. W1-6 SIGNS WILL STILL BE REQUIRED. IF THE WIDTH OF OFFSET IS LESS THAN 6' THEN THE TYPE III BARRICADE WITH ATTACHED ARROW SIGN PANEL CAN BE ELIMINATED IN THE TAPER AREAS.
- ⑥ WHEN THE LENGTH OF THE SHIFTED SEGMENT (DISTANCE BETWEEN WEAVE POINTS) IS LESS THAN 1500', DOUBLE REVERSE CURVE SIGNS (W24-1) SHOULD BE USED INSTEAD OF THE REVERSE CURVE (W1-4) SIGNS. ARROWS ON THE 4'X8' "ALL TRAFFIC" SIGNS SHALL BE THE SAME SHAPE.
- ⑦ THE NUMBER OF ARROWS ON THESE SIGNS SHALL MATCH THE NUMBER OF LANES OPEN TO TRAFFIC.



4'x 8' (1.2 m x 2.4 m); 1 (25) BORDER; 10 (250) CAPITAL LETTERS BACKGROUND SHEETING SHALL BE THE SAME AS ALL DIAMOND SHAPED CONSTRUCTION SIGNS.

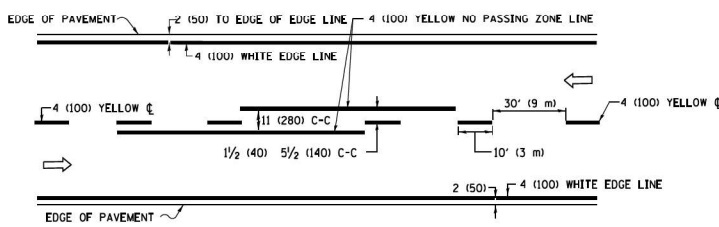
ALL DIMENSIONS ARE IN INCHES (MILLIMETERS) UNLESS OTHERWISE SHOWN

USER NAME = foatemi PLOT SCALE = 50.0000" / in. PLOT DATE = 3/4/2019	DESIGNED - D.W.S. DRAWN - CHECKED - DATE - 02-87	REVISED - J.A.F. 02-06 REVISED - S.P.B. 01-07 REVISED - S.P.B. 12-09 REVISED - M.D. 06-13	<b>STATE OF ILLINOIS DEPARTMENT OF TRANSPORTATION</b>	<b>TRAFFIC CONTROL DETAILS FOR FREEWAY SINGLE &amp; MULTI-LANE WEAVE</b>	F.A.U. RTE. SECTION COUNTY TOTAL SHEETS SHEET NO. 367 (99-4-1HB-2) BR 23 WILL 14 11 CONTRACT NO. 62W42
--	---	--	---	--	--

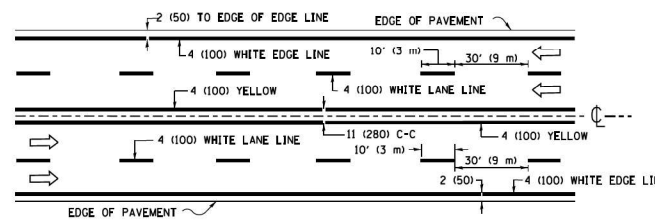
USER NAME = Michael.Czepak PLOT SCALE = 0.1666667" / in. PLOT DATE = 1/26/2024	DESIGNED - MC DRAWN - MC CHECKED - PK DATE - 01/26/2024	REVISED - REVISED - REVISED - REVISED -	<b>STATE OF ILLINOIS DEPARTMENT OF TRANSPORTATION</b>	<b>TRAFFIC CONTROL DETAILS FOR FREEWAY SINGLE &amp; MULTI-LANE WEAVE</b>	F.A.U. RTE. SECTION COUNTY TOTAL SHEETS SHEET NO. 367 (99-4-1HB-2) BR 23 WILL 14 11 CONTRACT NO. 62W42
--	--	--	---	--	--

MODEL: Default  
 FILE NAME: p:\projects\2019\11\11002704-EXP\CAD\DWG\2-11-2019\CAD\DWG\2-11-2019\2-11-2019.dwg  
 PROJECT: 11002704-EXP\CAD\DWG\2-11-2019\CAD\DWG\2-11-2019\2-11-2019.dwg  
 USER: foatemi  
 PLOT DATE: 3/4/2019  
 PLOT SCALE: 50.0000" / in.  
 PLOT DATE: 3/4/2019

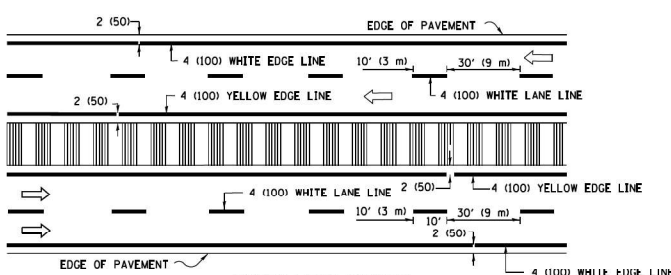




**2-LANE ROADWAY**

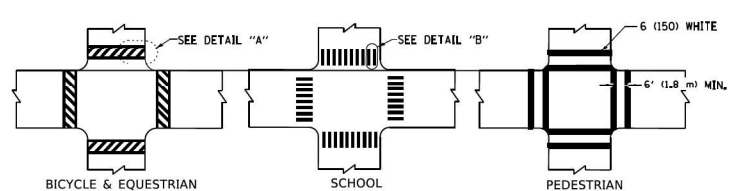


**MULTI-LANE UNDIVIDED**



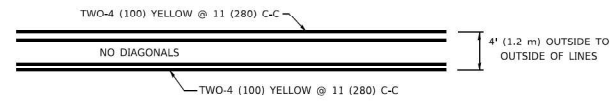
**MULTI-LANE DIVIDED WITH MEDIAN**

**TYPICAL LANE AND EDGE LINE MARKING**

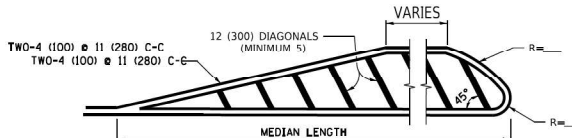


**TYPICAL CROSSWALK MARKING**

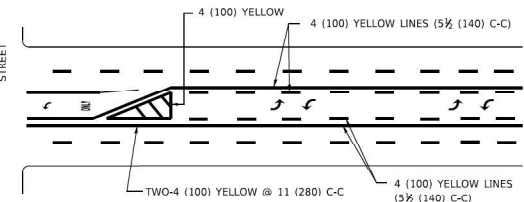
\* MARKINGS SHALL BE INSTALLED PARALLEL TO THE CENTERLINE OF THE ROAD WHICH IT CROSSES



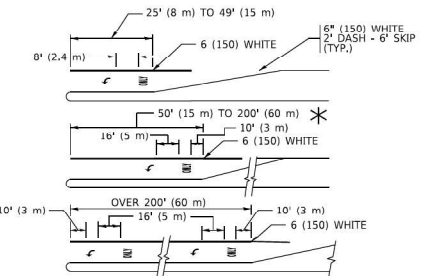
**4' (1.2 m) WIDE MEDIANS ONLY**



**MEDIANS OVER 4' (1.2 m) WIDE**



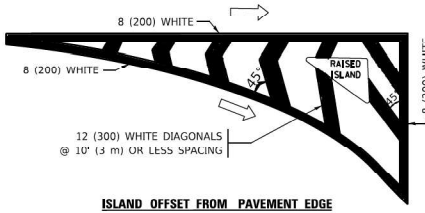
**MEDIAN WITH TWO-WAY LEFT TURN LANE TYPICAL PAINTED MEDIAN MARKING**



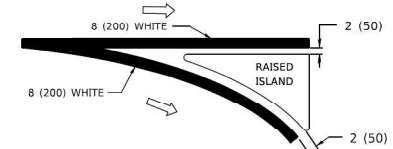
**TYPICAL LEFT (OR RIGHT) TURN LANE**

**TYPICAL TURN LANE MARKING**

FULL SIZE LETTERS 8" (2.4 m) AND ARROWS SHALL BE USED. AREA = 15.6 SQ. FT. (1.5 m<sup>2</sup>) ONLY AREA = 20.8 SQ. FT. (1.9 m<sup>2</sup>)

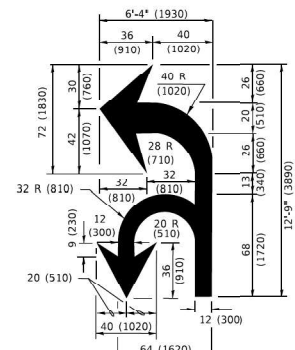


**ISLAND OFFSET FROM PAVEMENT EDGE**

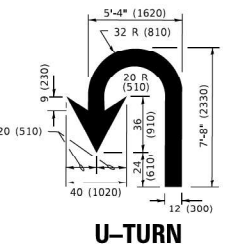


**ISLAND AT PAVEMENT EDGE**

**TYPICAL ISLAND MARKING**



**COMBINATION LEFT AND U-TURN**



**U-TURN**

**LANE REDUCTION TRANSITION**

\* LANE REDUCTION ARROWS REQUIRED AT SPEEDS OF 45 MPH OR GREATER OR WHEN SPECIFIED IN PLANS.

D(FT)	SPEED LIMIT
345	30
425	35
500	40
580	45
665	50
750	55

TYPE OF MARKING	WIDTH OF LINE	PATTERN	COLOR	SPACING / REMARKS
CENTERLINE ON 2 LANE PAVEMENT	4 (100)	SKIP-DASH	YELLOW	10' (3 m) LINE WITH 30' (9 m) SPACE
CENTERLINE ON MULTI-LANE UNDIVIDED PAVEMENT	2 @ 4 (100)	SOLID	YELLOW	11 (280) C-C
NO PASSING ZONE LINES: FOR ONE DIRECTION FOR BOTH DIRECTIONS	4 (100) 2 @ 4 (100)	SOLID SOLID	YELLOW YELLOW	5 1/2 (140) C-C FROM SKIP-DASH CENTERLINE 11 (280) C-C OMIT SKIP-DASH CENTERLINE BETWEEN
LANE LINES	4 (100) 5 (125) ON FREEWAYS	SKIP-DASH SKIP-DASH	WHITE WHITE	10' (3 m) LINE WITH 30' (9 m) SPACE
DOTTED LINES (EXTENSIONS OF CENTER, LANE OR TURN LANE MARKINGS)	SAME AS LINE BEING EXTENDED	SKIP-DASH	SAME AS LINE BEING EXTENDED	2' (600) LINE WITH 6' (1.8 m) SPACE
EDGE LINES	4 (100)	SOLID	YELLOW-LEFT WHITE-RIGHT	OUTLINE MEDIANS IN YELLOW
TURN LANE MARKINGS	6 (150) LINE: FULL SIZE LETTERS & SYMBOLS 8" (2.4m)	SOLID	WHITE	SEE TYPICAL TURN LANE MARKING DETAIL
TWO WAY LEFT TURN MARKING	2 @ 4 (100) SKIP-DASH 8" (2.4m) LEFT ARROW	SKIP-DASH AND SOLID IN PAIRS	YELLOW WHITE	10' (3 m) LINE WITH 30' (9 m) SPACE FOR SKIP-DASH; 5 1/2 (140) C-C BETWEEN SOLID LINE AND SKIP-DASH LINE SEE TYPICAL TWO-WAY LEFT TURN MARKING DETAIL
CROSSWALK LINES (PEDESTRIAN) A. DIAGONALS (BIKE & EQUESTRIAN) B. LONGITUDINAL BARS (SCHOOL)	2 @ 6 (150) 12 (300) @ 45° 12 (300) @ 90°	SOLID SOLID SOLID	WHITE WHITE WHITE	NOT LESS THAN 6' (1.8 m) APART 2' (600) APART SEE TYPICAL CROSSWALK MARKING DETAILS.
STOP LINES	24 (600)	SOLID	WHITE	PLACE 4' (1.2 m) IN ADVANCE OF AND PARALLEL TO CROSSWALK, IF PRESENT. OTHERWISE, PLACE AT DESIRED STOPPING POINT. PARALLEL TO CROSSROAD CENTERLINE, WHERE POSSIBLE
PAINTED MEDIANS	2 @ 4 (100) WITH 12 (300) DIAGONALS @ 45° NO DIAGONALS USED FOR 4' (1.2 m) WIDE MEDIANS	SOLID	YELLOW: TWO WAY TRAFFIC WHITE: ONE WAY TRAFFIC	11 (280) C-C FOR THE DOUBLE LINE SEE TYPICAL PAINTED MEDIAN MARKING.
GORE MARKING AND CHANNELIZING LINES	8 (200) WITH 12 (300) DIAGONALS @ 45°	SOLID	WHITE	DIAGONALS: 15' (4.5 m) C-C (LESS THAN 30MPH (50 km/h)) 20' (6 m) C-C 30MPH (50 km/h) TO 45MPH (70 km/h)) 30' (9 m) C-C (OVER 45MPH (70 km/h))
RAILROAD CROSSING	24 (600) TRANSVERSE LINES: "RR" IS 6" (1.8 m) LETTERS; 16 (400) LINE FOR "X"	SOLID	WHITE	SEE STATE STANDARD 780001 AREA OF: "R"=3.6 SQ. FT. (0.33 m <sup>2</sup> ) EACH "X"=54.0 SQ. FT. (5.0 m <sup>2</sup> )
SHOULDER DIAGONALS (REQUIRED FOR SHOULDERS > 8')	12 (300) @ 45°	SOLID	WHITE - RIGHT YELLOW - LEFT*	50' (15 m) C-C (LESS THAN 30MPH (50 km/h)) 75' (25 m) C-C (30 MPH (50 km/h) TO 45MPH (70 km/h)) 150' (45 m) C-C (OVER 45MPH (70 km/h))
U TURN ARROW	SEE DETAIL	SOLID	WHITE	16.3 SF
2 ARROW COMBINATION LEFT AND U TURN	SEE DETAIL	SOLID	WHITE	30.4 SF

FOR FURTHER DETAILS ON PAVEMENT MARKING REFER TO STANDARD SPECIFICATIONS FOR ROAD AND BRIDGE CONSTRUCTION AND STATE STANDARD 780001.

All dimensions are in inches (millimeters) unless otherwise shown.

USER NAME = foctemj	DESIGNED - EVERS	REVISED - C. JUCIUS 09-09-09
PLOT SCALE = 50.0000' / in.	CHECKED -	REVISED - C. JUCIUS 07-01-13
PLOT DATE = 3/4/2019	DATE - 03-19-90	REVISED - C. JUCIUS 12-21-15
		REVISED - C. JUCIUS 04-12-16

**STATE OF ILLINOIS DEPARTMENT OF TRANSPORTATION**

**DISTRICT ONE TYPICAL PAVEMENT MARKINGS**

F.A. RTE.	SECTION	COUNTY	TOTAL SHEETS	SHEET NO.
SCALE: NONE		SHEET 1 OF 2 SHEETS		STA. TO STA.
TC-13		CONTRACT NO.		
ILLINOIS		FED. AID PROJECT		

MODEL: Default  
 FILE NAME: p:\projects\2018\03\20180327\04-EX-01\CAD\02\W42\_Gougar\_Rd\_Bridge\_Rehab\04-Sheets\01-Civil\02\W42-ht-d1.dwg  
 PROJECT: 2018-03-27-04-EX-01  
 USER: foctemj  
 DATE: 3/4/2019 10:34:37 AM  
 PLOT DATE: 1/26/2024  
 USER: Michael.Czepak  
 DESIGNED: MC  
 DRAWN: MC  
 CHECKED: PK  
 DATE: 01/26/2024



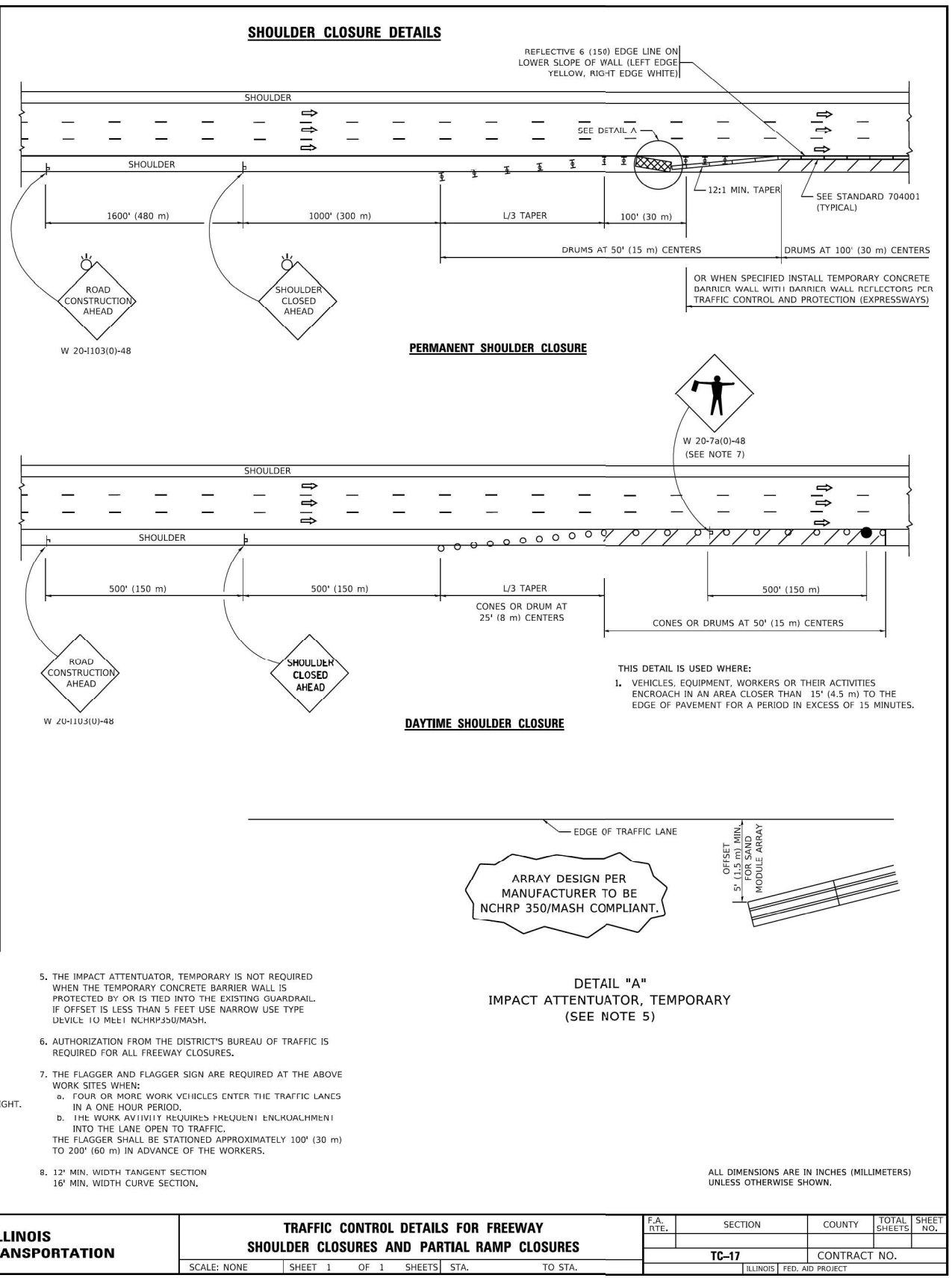
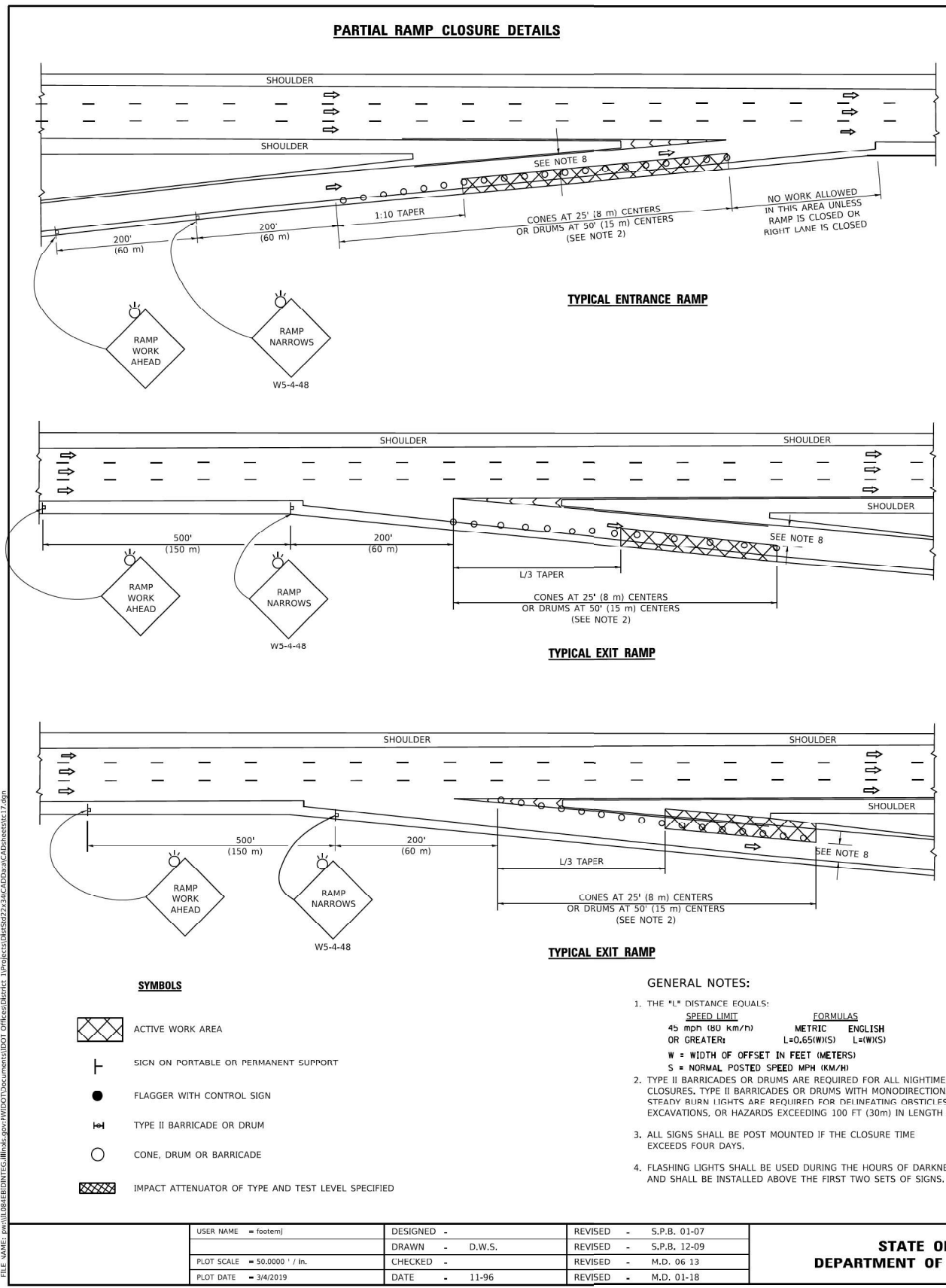
**STATE OF ILLINOIS DEPARTMENT OF TRANSPORTATION**

**DISTRICT ONE TYPICAL PAVEMENT MARKINGS**

SCALE:	SHEET 4 OF 6 SHEETS	STA. TO STA.
--------	---------------------	--------------

F.A.U. RTE.	SECTION	COUNTY	TOTAL SHEETS	SHEET NO.
367	(99-4-1HB-2) BR 23	WILL	14	12
		CONTRACT NO. 62W42		
ILLINOIS		FED. AID PROJECT		





USER NAME = footemj	DESIGNED -	REVISED -	S.P.B. 01-07
PLOT SCALE = 50.0000' / in.	DRAWN - D.W.S.	REVISED -	S.P.B. 12-09
PLOT DATE = 3/4/2019	CHECKED -	REVISED -	M.D. 06 13
	DATE - 11-96	REVISED -	M.D. 01-18

**STATE OF ILLINOIS  
DEPARTMENT OF TRANSPORTATION**

**TRAFFIC CONTROL DETAILS FOR FREEWAY  
SHOULDER CLOSURES AND PARTIAL RAMP CLOSURES**

F.A.U. RTE.	SECTION	COUNTY	TOTAL SHEETS	SHEET NO.
	TC-17			
CONTRACT NO.				
ILLINOIS FED. AID PROJECT				

4/17/2019 10:41:41 AM D:\garza

MODEL: D:\garza\...  
 FILE NAME: ...  
 PROJECT: ...  
 DATE: 4/17/2019 10:41:41 AM

**garza KARHOFF  
ENGINEERING, LLC**

USER NAME = Michael.Czerpak	DESIGNED - MC	REVISED -	
PLOT SCALE = 0.1666667' / in.	DRAWN - MC	REVISED -	
PLOT DATE = 1/26/2024	CHECKED - PK	REVISED -	
	DATE - 01/26/2024	REVISED -	

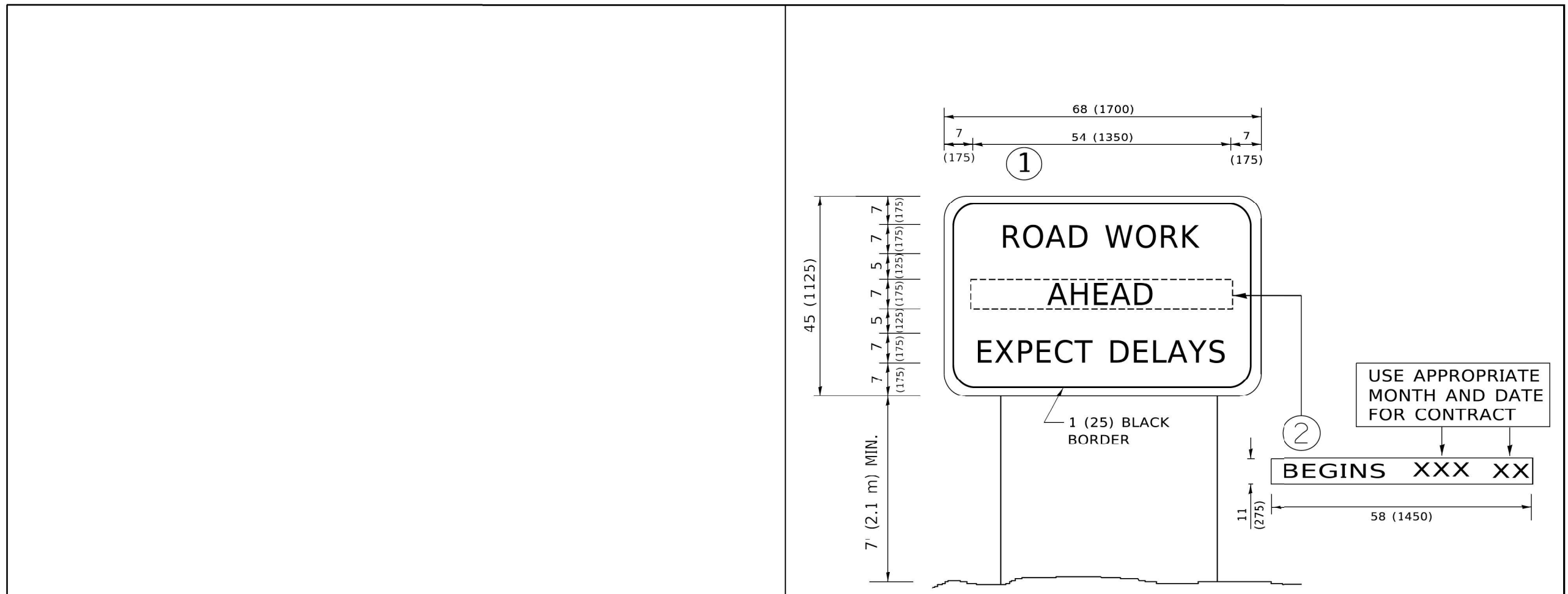
**STATE OF ILLINOIS  
DEPARTMENT OF TRANSPORTATION**

**TRAFFIC CONTROL DETAILS FOR FREEWAY  
SHOULDER CLOSURES AND PARTIAL RAMP CLOSURES**

F.A.U. RTE.	SECTION	COUNTY	TOTAL SHEETS	SHEET NO.
367	(99-4-1HB-2) BR 23	WILL	14	13
CONTRACT NO. 62W42				
ILLINOIS FED. AID PROJECT				

MODEL: General Notes [Sheet]  
 FILE NAME: p:\projects\transys\corp\ppl-hosted\Documents\Projects\_2018\C401140118002204-EP\CAD\DWG2\Gougar\_Rd\_Bridge\_Rehab\04-Sheets\01-Civil\621W42-ht-01-standard-06.dgn  
 4/17/2024 10:48:10 AM

MODEL: Definitive  
 FILE NAME: I:\ILLINOIS\BID\INTFC\Illinois\ppl\WIDOT\Documents\DOT\_Definitive\04-Sheets\02-23-24\CAD\Draws\CAD\Sheet022.dgn



**NOTES:**

1. USE BLACK LETTERING ON ORANGE BACKGROUND.
2. ERECT SIGNS IN ADVANCE OF THE LOCATION FOR THE "ROAD CONSTRUCTION AHEAD" SIGN AT LOCATIONS AS DIRECTED BY THE ENGINEER.
3. ERECT SIGN (1) WITH INSTALLED PANEL (2) ONE WEEK PRIOR TO THE START OF CONSTRUCTION.
4. REMOVE PANEL (2) SOON AFTER THE START OF CONSTRUCTION.
5. SEE SPECIAL PROVISION FOR "TEMPORARY INFORMATION SIGNING" FOR ADDITIONAL INFORMATION.
6. ONE SIGN ASSEMBLY EQUALS 25.70 SQ. FT. (2.3 SQ. M.)
7. SHALL BE PAID FOR AS TEMPORARY INFORMATION SIGNING.

ALL DIMENSIONS ARE IN INCHES (MILLIMETERS) UNLESS OTHERWISE SHOWN.

USER NAME = footemj PLOT SCALE = 50.0000' / in. PLOT DATE = 3/4/2019	DESIGNED - DRAWN - CHECKED - DATE -	REVISED - R. MIRS 09-15-97 REVISED - R. MIRS 12-11-97 REVISED - T. RAMMACHER 02-02-99 REVISED - C. JUCIUS 01-31-07	<b>STATE OF ILLINOIS DEPARTMENT OF TRANSPORTATION</b>	<b>ARTERIAL ROAD INFORMATION SIGN</b>	F.A. RTE.    SECTION    COUNTY    TOTAL SHEETS    SHEET NO.
			SCALE: NONE	SHEET 1 OF 1 SHEETS	STA.                      TO STA.
			TC-22		CONTRACT NO.
					ILLINOIS    FED. AID PROJECT

USER NAME = Michael.Czerpak PLOT SCALE = 0.16666667' / in. PLOT DATE = 1/26/2024	DESIGNED - MC DRAWN - MC CHECKED - PK DATE - 01/26/2024	REVISED - REVISED - REVISED - REVISED -
--	--	--

**STATE OF ILLINOIS  
DEPARTMENT OF TRANSPORTATION**

SCALE:	SHEET 6 OF 6 SHEETS	STA.	TO STA.
--------	---------------------	------	---------

**ARTERIAL ROAD  
INFORMATION SIGN**

F.A.U. RTE.	SECTION	COUNTY	TOTAL SHEETS	SHEET NO.
367	(99-4-1HB-2) BR 23	WILL	14	14
CONTRACT NO. 62W42				
ILLINOIS    FED. AID PROJECT				

**garza karhoff**  
ENGINEERING, LLC