

STATE OF ILLINOIS  
DEPARTMENT OF TRANSPORTATION

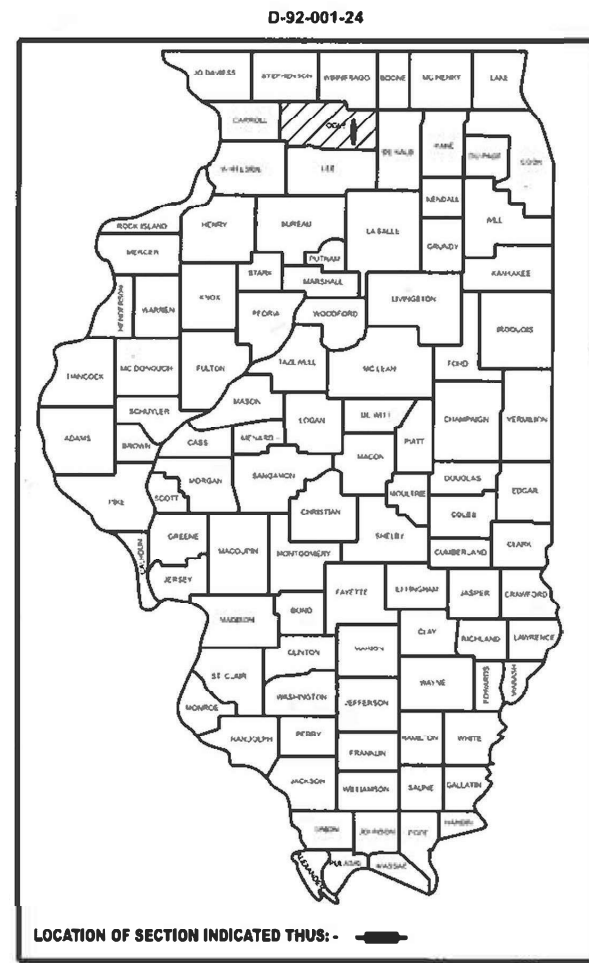
FAU RTE	SECTION	COUNTY	TOTAL SHEETS	SHEET NO
5452	109 RS-1	OGLE	15	1
		ILLINOIS	CONTRACT NO. 64S38	

FOR INDEX OF SHEETS, SEE SHEET NO. 2  
FOR STATE STANDARDS, SEE SHEET NO. 2

# PROPOSED HIGHWAY PLANS

FAU ROUTE 5452 (IL 251)  
SECTION 109 RS-1  
OGLE COUNTY  
EB TOLLWAY RAMP TO STEWARD RD  
(SOUTH OF ROCHELLE)  
MILLING & STANDARD OVERLAY

C-92-093-23



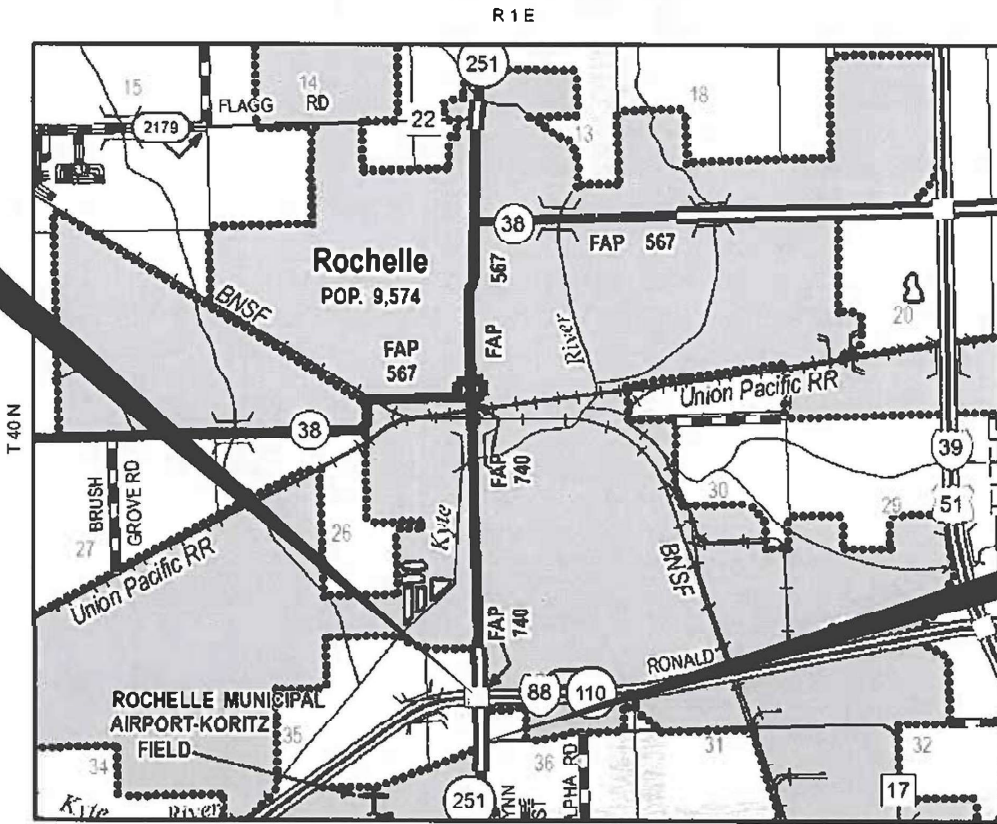
FLAGG TOWNSHIP SECTION (36)

SECTION ENDS  
STA. 36+58



FULL SIZE PLANS HAVE BEEN PREPARED USING STANDARD  
ENGINEERING SCALES. REDUCED SIZED PLANS WILL NOT  
CONFORM TO STANDARD SCALES. IN MAKING MEASUREMENTS  
ON REDUCED PLANS, THE ABOVE SCALES MAY BE USED.

J.U.L.I.E.  
JOINT UTILITY LOCATION INFORMATION FOR EXCAVATION  
1-800-892-0123  
OR 811



SECTION BEGINS  
STA. 28+73

PROJECT ENGINEER: CHAD SPREEMAN  
PROJECT MANAGER: TRACI DUDEN (815)-284-5932  
E-MAIL: Traci.Duden@Illinois.gov  
CONTRACT NO. 64S38

GROSS LENGTH = 785 FT. = 0.15 MILE  
NET LENGTH = 785 FT. = 0.15 MILE

STATE OF ILLINOIS  
DEPARTMENT OF TRANSPORTATION

SUBMITTED January 17, 2024  
Steph M. Jara -sue  
REGIONAL ENGINEER

March 22, 2024 [Signature]  
ENGINEER OF DESIGN AND ENVIRONMENT

March 22, 2024 [Signature]  
DIRECTOR OF HIGHWAYS PROJECT IMPLEMENTATION

PRINTED BY THE AUTHORITY  
OF THE STATE OF ILLINOIS

## INDEX

1	COVER SHEET
2	INDEX OF SHEETS / HIGHWAY STANDARDS
3	GENERAL NOTES
4 - 5	SUMMARY OF QUANTITIES
6 - 7	TYPICAL SECTIONS
8 - 9	SCHEDULE OF QUANTITIES
10	HMA SCHEDULE
11	PLAN SHEETS
12 - 15	TYPICAL PAVEMENT MARKINGS (DIST STD 41.1)

## HIGHWAY STANDARDS

000001 - 08	STANDARD SYMBOLS, ABBREVIATIONS AND PATTERNS
001006	DECIMAL OF AN INCH AND OF A FOOT
701601 - 09	URBAN LANE CLOSURE, MULTILANE, 1W or 2W WITH NONTRAVERSABLE MEDIAN
701701 - 10	URBAN LANE CLOSURE, MULTILANE INTERSECTION
701901 - 09	TRAFFIC CONTROL DEVICES
780001 - 05	TYPICAL PAVEMENT MARKINGS
781001 - 04	TYPICAL APPLICATIONS RASIED REFLECTIVE PAVEMENT MARKINGS

MODEL: SHT\_PLAN  
 FILE NAME: C:\Bentley\CONNECT1011\Organization\Chil\DOT\_Standards\Ceil\DOT\_Standards.dwg

	USER NAME = Eric.Thomas	DESIGNED -	REVISED -	<b>STATE OF ILLINOIS DEPARTMENT OF TRANSPORTATION</b>	<b>INDEX / HIGHWAY STANDARDS</b>	F.A.U. RTE. 5452	SECTION 109 RS-1	COUNTY OGLE	TOTAL SHEETS 15	SHEET NO. 2
	PLOT SCALE = 0.1667" / in.	CHECKED -	REVISED -			CONTRACT NO. 64S38				
	PLOT DATE = 12/7/2022	DATE -	REVISED -		SCALE:	SHEET	OF	SHEETS	STA.	TO STA.
										ILLINOIS FED. AID PROJECT

# GENERAL NOTES

The following Mixture Requirements are applicable for this project:

Location and Mixture Use(s):	Resurfacing	
	Surface	Binder
PG:	SBS PG 70-28	SBS PG 70-28
Design Air Voids:	4.0 @ N90	4.0 @ N90
Mixture Composition:	IL 9.5	IL 9.5 or 9.5FG
Friction Aggregate:	E	N/A
Mixture Weight:	117 lb/sy/in	N/A
Quality Management Program:	QC/QA	QC/QA
Sublot Size:	N/A	N/A
Material Transfer Device	N/A	N/A

The Contractor will be required to furnish 5 1/2" high brass stencils as approved by the Engineer and install stationing at 250' intervals. Stationing shall be placed on both lanes of 2-lane highways and on the outside lanes in both directions on 4-lane highways. The stations shall be placed 6" inside the pavement marking edge so they can be read from the shoulder. This work will be included in the cost of the final pavement surface.

The area to be tacked or primed shall be limited to that which can be covered with HMA on the next day's production, but no more than five days in advance of the placement of the HMA, unless approved by the Engineer.

Pavement Marking shall be done according to Standard 780001, except as follows:

1. All words, such as ONLY, shall be 8 feet high.
2. All non-freeway arrows shall be the large size.
3. The distance between yellow no-passing lines shall be 8 inches, not 7 inches, as shown in the detail of Typical Lane and Edge Lines.
4. Centerline Skip Dash Pavement Marking on multi-lane divided, multi-lane undivided, and one-way roadway shall be according to District Standard 41.1.

The following listed utilities located within the project limits or immediately adjacent to the project construction limits are members of JULIE:

Nicor Gas Co.	630-388-3019
Rochelle Municipal Utilities-Electrical	815-561-2040
Rochelle Municipal Utilities-W&S	815-561-2065
Comcast Cable	224-229-5432
Frontier (North)	309-853-6297

IDOT is not a member of JULIE. If you are near any overhead lighting, intersection lighting or traffic signals, contact the IDOT Traffic Office at 815/284-5469 at least 48 hours prior to work.

FILE NAME = 64538.GN.DOCX	USER NAME =	DESIGNED - Engineering Systems	REVISED -	<b>STATE OF ILLINOIS</b> <b>DEPARTMENT OF TRANSPORTATION</b>	<b>GENERAL NOTES</b>	ROUTE	SECTION	COUNTY	TOTAL SHEETS	SHEET NO.
	PLOT SCALE =	DRAWN -	REVISED -			FAP 5462	109 RS-1	OgJw	15	3
	PLOT DATE = 1/17/2024 9:46 AM	CHECKED -	REVISED -			CONTRACT NO. 64538				
	DATE - 1/12/2024 12:51 PM	REVISED -	SCALE:			SHEET NO.	OF	SHEETS	STA.	TO STA.

CONSTR. CODE
100% STATE
ROADWAY
0005
RURAL

CODE NO.	ITEM	UNIT	TOTAL QUANTITY	
40600295	POLYMERIZED BITUMINOUS MATERIALS (TACK COAT)	POUND	3389	3389
40600370	LONGITUDINAL JOINT SEALANT	FOOT	1570	1570
40603209	POLYMERIZED HOT-MIX ASPHALT BINDER COURSE, IL-9.5, N90	TON	562	562
40604174	POLYMERIZED HOT-MIX ASPHALT SURFACE COURSE, IL-9.5, MIX "E", N90	TON	441	441
44000163	HOT-MIX ASPHALT SURFACE REMOVAL, 3 1/2"	SQ YD	5021	5021
44000500	COMBINATION CURB AND GUTTER REMOVAL	FOOT	8	8
48102100	AGGREGATE WEDGE SHOULDER, TYPE B	TON	3	3
60607400	COMBINATION CONCRETE CURB AND GUTTER, TYPE B-9.24	FOOT	8	8
67100100	MOBILIZATION	L SUM	1	1
70102630	TRAFFIC CONTROL AND PROTECTION, STANDARD 701601	L SUM	1	1
70102635	TRAFFIC CONTROL AND PROTECTION, STANDARD 701701	L SUM	1	1
* 78000100	THERMOPLASTIC PAVEMENT MARKING - LETTERS AND SYMBOLS	SQ FT	47	47
* 78000200	THERMOPLASTIC PAVEMENT MARKING - LINE 4"	FOOT	2943	2943
* 78000400	THERMOPLASTIC PAVEMENT MARKING - LINE 6"	FOOT	165	165

\* SPECIALTY ITEM

MODEL: SHT\_PLAN  
FILE NAME: C:\Bentley\CONNECT1011\Organization\Chil\DOT\_Standards\Civil\DOT\_Sheets.dwg

USER NAME = Eric.Thomas	DESIGNED -	REVISED -
PLOT SCALE = 0.1667"/in	DRAWN -	REVISED -
PLOT DATE = 12/7/2022	CHECKED -	REVISED -
	DATE -	REVISED -

**STATE OF ILLINOIS  
DEPARTMENT OF TRANSPORTATION**

**SUMMARY OF QUANTITIES**

SCALE: SHEET OF SHEETS STA. TO STA.

F.A.U. RTE.	SECTION	COUNTY	TOTAL SHEETS	SHEET NO.
5452	109 RS-1	OGLE	15	4
ILLINOIS FED. AID PROJECT			CONTRACT NO. 64S38	

MODEL: SHT\_PLAN  
 FILE NAME: C:\Bentley\CONNECT1011\Organization\Chil\DOT\_Standards\Ceil\DOT\_Sheets.dwg

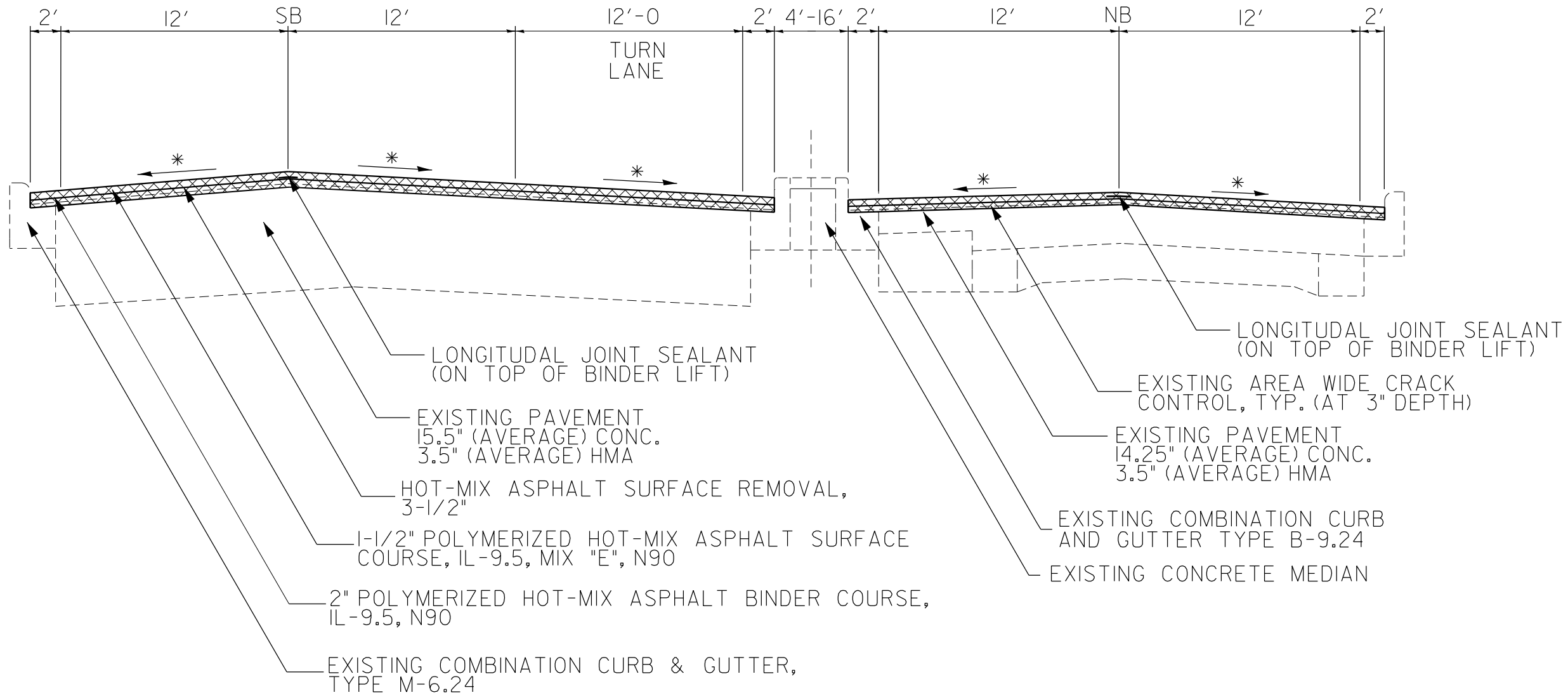
CODE NO.	ITEM	UNIT	TOTAL QUANTITY	CONSTR. CODE	
				100% STATE ROADWAY	0005 RURAL
* 78000500	THERMOPLASTIC PAVEMENT MARKING - LINE 8"	FOOT	323	323	
* 78000600	THERMOPLASTIC PAVEMENT MARKING - LINE 12"	FOOT	44	44	
* 78000650	THERMOPLASTIC PAVEMENT MARKING - LINE 24"	FOOT	122	122	
* 78011000	GROOVING FOR RECESSED PAVEMENT MARKING, LETTERS AND SYMBOLS	SQ FT	52	52	
* 78011025	GROOVING FOR RECESSED PAVEMENT MARKING 5"	FOOT	2943	2943	
* 78011035	GROOVING FOR RECESSED PAVEMENT MARKING 7"	FOOT	165	165	
* 78011045	GROOVING FOR RECESSED PAVEMENT MARKING 9"	FOOT	200	200	
* 78011065	GROOVING FOR RECESSED PAVEMENT MARKING 13"	FOOT	44	44	
* 78011125	GROOVING FOR RECESSED PAVEMENT MARKING 25"	FOOT	122	122	
* 78100100	RAISED REFLECTIVE PAVEMENT MARKER	EACH	29	29	
78300200	RAISED REFLECTIVE PAVEMENT MARKER REMOVAL	EACH	19	19	

\* SPECIALTY ITEM

USER NAME = Eric.Thomas	DESIGNED -	REVISED -	<b>STATE OF ILLINOIS DEPARTMENT OF TRANSPORTATION</b>	<b>SUMMARY OF QUANTITIES</b>				F.A.U. RTE.	SECTION	COUNTY	TOTAL SHEETS	SHEET NO.
PLOT SCALE = 0.1667"/in.	DRAWN -	REVISED -						5452	109 RS-1	OGLE	15	5
PLOT DATE = 12/7/2022	CHECKED -	REVISED -		SCALE: SHEET OF SHEETS STA. TO STA.				CONTRACT NO. 64S38				
DATE -	REVISED -	REVISED -						ILLINOIS FED. AID PROJECT				

IL 251

STA. 29+88 - 34+62.5 RT  
 STA. 29+88 - 34+34 LT



\*MATCH EXISTING CROSS SLOPE  
 HMA MIXTURE APPLICATION RATE = 117lb/sy/in

MODEL: D:\\_SUF\_P\PLAN\_1  
 FILE NAME: ...

USER NAME = Cristian.Rosas	DESIGNED -	REVISED -
	DRAWN -	REVISED -
PLOT SCALE = 0.1667"/in	CHECKED -	REVISED -
PLOT DATE = 1/17/2024	DATE -	REVISED -

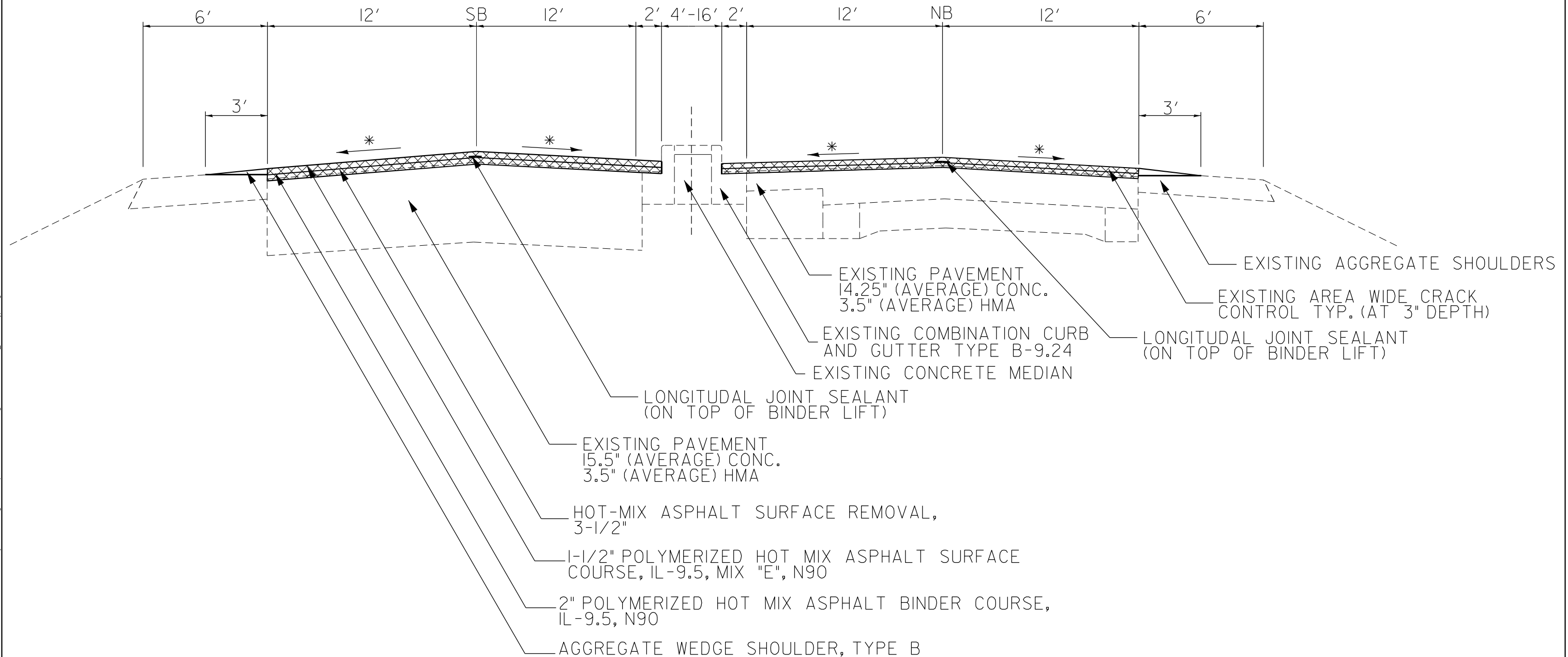
**STATE OF ILLINOIS  
 DEPARTMENT OF TRANSPORTATION**

<b>TYPICAL SECTION</b>	
SCALE:	SHEET OF SHEETS STA. TO STA.

F.A.U. RTE.	SECTION	COUNTY	TOTAL SHEETS	SHEET NO.
5452	109 RS-1	OGLE	15	6
CONTRACT NO. 64S38				
ILLINOIS FED. AID PROJECT				

# IL 251

STA. 28+73 - 29+88  
 STA. 34+34 - 36+58 LT  
 STA. 34+62.5 - 36+58 RT



\*MATCH EXISTING CROSS SLOPE  
 HMA MIXTURE APPLICATION RATE = 117lb/sy/in

MODEL: D:\\_SUF\_Plan\_1  
 FILE NAME: ...

USER NAME = Cristian.Rosas	DESIGNED -	REVISED -
	DRAWN -	REVISED -
PLOT SCALE = 0.1667" / in.	CHECKED -	REVISED -
PLOT DATE = 1/17/2024	DATE -	REVISED -

**STATE OF ILLINOIS  
 DEPARTMENT OF TRANSPORTATION**

<b>TYPICAL SECTION</b>	
SCALE:	SHEET OF SHEETS STA. TO STA.

F.A.U. RTE.	SECTION	COUNTY	TOTAL SHEETS	SHEET NO.
5452	109 RS-1	OGLE	15	7
CONTRACT NO. 64S38				
ILLINOIS FED. AID PROJECT				

44000500	COMBINATION CURB AND GUTTER REMOVAL			REMARKS
FOOT	LOCATION	OFFSET		
	NORTHBOUND			
8	34+45	- 34+53		MEDIAN
60607400	COMBINATION CONCRETE CURB AND GUTTER, TYPE B-9.24			REMARKS
FOOT	LOCATION	OFFSET		
	NORTHBOUND			
8	34+45	- 34+53		MEDIAN
78000100	THERMOPLASTIC PAVEMENT MARKINGS - LETTERS AND SYMBOLS			REMARKS
SQ FT	LOCATION	OFFSET		
	SOUTHBOUND			
47	30+00	- 32+00		LT TURN ARROW ( 3 ARROWS ) TO STEWARD ROAD
78000200	THERMOPLASTIC PAVEMENT MARKING - LINE 4"			REMARKS
FOOT	LOCATION	OFFSET		
	MEDIAN			
136	28+73	- 29+36		MEDIAN EDGE
1151	29+97	- 35+72		MEDIAN EDGE
1,287	SUBTOTAL			
	NORTHBOUND			
196	28+73	- 36+58		SKIP DASH
404	31+23	- 36+58		EDGE LINE - GAP RAMP OPENING
224	28+73	- 31+23		STEWARD ROAD
825	SUBTOTAL			
	SOUTHBOUND			
634	28+73	- 36+58		EDGE LINE - GAP RAMP OPENING
196	28+73	- 36+58		SKIP DASH
831	SUBTOTAL			
2,943	TOTAL			
78000400	THERMOPLASTIC PAVEMENT MARKING - LINE 6"			REMARKS
FOOT	LOCATION	OFFSET		
165	STEWARD ROAD			CROSS WALKS
78000500	THERMOPLASTIC PAVEMENT MARKING - LINE 8"			REMARKS
FOOT	LOCATION	OFFSET		
	SOUTHBOUND			
23	36+35	- 36+58		LEFT TURN LANE - SE RAMP
200	30+00	- 32+00		LEFT TURN LANE - STEWARD ROAD
223	SUBTOTAL			
100	STEWARD ROAD			ISLAND EDGES
323	TOTAL			

78000600	THERMOPLASTIC PAVEMENT MARKING - LINE 12"			REMARKS
FOOT	LOCATION	OFFSET		
44	STEWARD ROAD			ISLAND DIAGONALS
78000650	THERMOPLASTIC PAVEMENT MARKING - LINE 24"			REMARKS
FOOT	LOCATION	OFFSET		
	NORTHBOUND			
26	28+96			STOP BAR
	SOUTHBOUND			
41	30+00			STOP BAR
18	36+35			STOP BAR
59	SUBTOTAL			
37	STEWARD ROAD			STOP BARS
122	TOTAL			
78011000	GROOVING FOR RECESSED PAVEMENT MARKING, LETTERS AND SYMBOLS			REMARKS
SQ FT	LOCATION	OFFSET		
	SOUTHBOUND			
52	30+00	- 32+00		
78011025	GROOVING FOR RECESSED PAVEMENT MARKING 5"			REMARKS
FOOT	LOCATION	OFFSET		
	MEDIAN			
136	28+73	- 29+36		MEDIAN EDGE
1151	29+97	- 35+72		MEDIAN EDGE
1,287	SUBTOTAL			
	NORTHBOUND			
196	28+73	- 36+58		SKIP DASH
404	31+23	- 36+58		EDGE LINE - GAP RAMP OPENING
224	28+73	- 31+23		STEWARD ROAD
825	SUBTOTAL			
	SOUTHBOUND			
634	28+73	- 36+58		EDGE LINE - GAP RAMP OPENING
196	28+73	- 36+58		SKIP DASH
831	SUBTOTAL			
2,943	TOTAL			

MODEL: SHT\_PLAN  
 FILE NAME: C:\Bentley\CONNECT11\Organization\Chil\IDOT - Standards\CallIDOT - Sheets.dwg

USER NAME = Eric.Thomas	DESIGNED -	REVISED -
PLOT SCALE = 0.1667"/in.	DRAWN -	REVISED -
PLOT DATE = 12/7/2022	CHECKED -	REVISED -
	DATE -	REVISED -

**STATE OF ILLINOIS  
DEPARTMENT OF TRANSPORTATION**

**SCHEDULE OF QUANTITIES**

SCALE: SHEET OF SHEETS STA. TO STA.

F.A.U. RTE.	SECTION	COUNTY	TOTAL SHEETS	SHEET NO.
5452	109 RS-1	OGLE	15	8
CONTRACT NO. 64S38			ILLINOIS FED. AID PROJECT	



78011035	GROOVING FOR RECESSED PAVEMENT MARKING 7"			REMARKS
FOOT	LOCATION	OFFSET		
165	STEWARD ROAD			CROSS WALKS

78011045	GROOVING FOR RECESSED PAVEMENT MARKING 9"			REMARKS
FOOT	LOCATION	OFFSET		
SOUTHBOUND				
23	36+35	36+58		LEFT TURN LANE - SE RAMP
200	30+00	32+00		LEFT TURN LANE - STEWARD ROAD
223	SUBTOTAL			

100	STEWARD ROAD			ISLAND EDGES
323	TOTAL			

78011065	GROOVING FOR RECESSED PAVEMENT MARKING 13"			REMARKS
FOOT	LOCATION	OFFSET		
44	STEWARD ROAD			ISLAND DIAGONALS

78011125	GROOVING FOR RECESSED PAVEMENT MARKING 25"			REMARKS
FOOT	LOCATION	OFFSET		
NORTHBOUND				
26	28+96			STOP BAR
SOUTHBOUND				
41	30+00			STOP BAR
18	36+35			STOP BAR
59	SUBTOTAL			
37	STEWARD ROAD			STOP BARS
122	TOTAL			

78100100	RAISED REFLECTIVE PAVEMENT MARKER			REMARKS
EACH	LOCATION	OFFSET		
NORTHBOUND				
11	28+73	36+58		ONE-WAY CRYSTAL CENTERLINE @ 80' o.c
11	SUBTOTAL			
SOUTHBOUND				
11	28+73	36+58		ONE-WAY CRYSTAL CENTERLINE @ 80' o.c
6	30+00	32+00		ONE-WAY CRYSTAL 40' o.c. LT LANE
1	36+35	36+58		
18	SUBTOTAL			
29	TOTAL			

78300200	RAISED REFLECTIVE PAVEMENT MARKER			REMARKS
EACH	LOCATION	OFFSET		
NORTHBOUND				
8	28+73	36+58		ASSUME 30% MISSING
8	SUBTOTAL			

SOUTHBOUND				
8	28+73	36+58		ASSUME 30% MISSING
2	30+00	32+00		ASSUME 30% MISSING
1	36+35	36+58		
11	SUBTOTAL			

19	TOTAL			
----	-------	--	--	--

MODEL: SHT\_PLAN  
 FILE NAME: C:\Benler\CONNECT\011\Organization-Chil\DOT\_Standards\Cell\DOT\_Sheets.dwg

USER NAME = Eric.Thomas	DESIGNED -	REVISED -
PLOT SCALE = 0.1667"/in.	DRAWN -	REVISED -
PLOT DATE = 12/7/2022	CHECKED -	REVISED -
	DATE -	REVISED -

**STATE OF ILLINOIS**  
**DEPARTMENT OF TRANSPORTATION**

SCHEDULE OF QUANTITIES			
SCALE:	SHEET	OF SHEETS	STA. TO STA.

F.A.U. RTE.	SECTION	COUNTY	TOTAL SHEETS	SHEET NO.
5452	109 RS-1	OGLE	15	9
CONTRACT NO. 64S38				
ILLINOIS   FED. AID PROJECT				

									40600295	40600370	40603209	40604174	44000163	48102100
									Polymerized Bituminous Materials (Tack Coat)	Longitudinal Joint Sealant	Polymerized Hot-Mix Asphalt Binder Course	Polymerized Hot-Mix Asphalt Surface Course	Hot-Mix Asphalt Surface Removal	Agg Wedge Shoulder Type B
Station to Station	Remarks	Length	Mainline Average Width	Area	SQ YD	FT	FT	POUND	FOOT	TON	TON	SQ YD	TON	
<b>IL 251 Northbound</b>														
28 + 73 - 36 + 58		785	28	1,975				1,333	785	221	173	1,975		
<b>IL 251 Southbound</b>														
28 + 73 - 36 + 58	Mainline including Intersections	785	28	3,046				2,056	785	341	267	3,046	3.2	
								<b>3,389</b>	<b>1,570</b>	<b>562</b>	<b>441</b>	<b>5,021</b>	<b>3.2</b>	
Areas measured by cadd flooding														

MODEL: SHT\_PLAN  
 FILE NAME: C:\Bentley\CONNECT\1011\Organization\ChilidDOT\_Standards\Cad\DOT\_Sheets.dwg

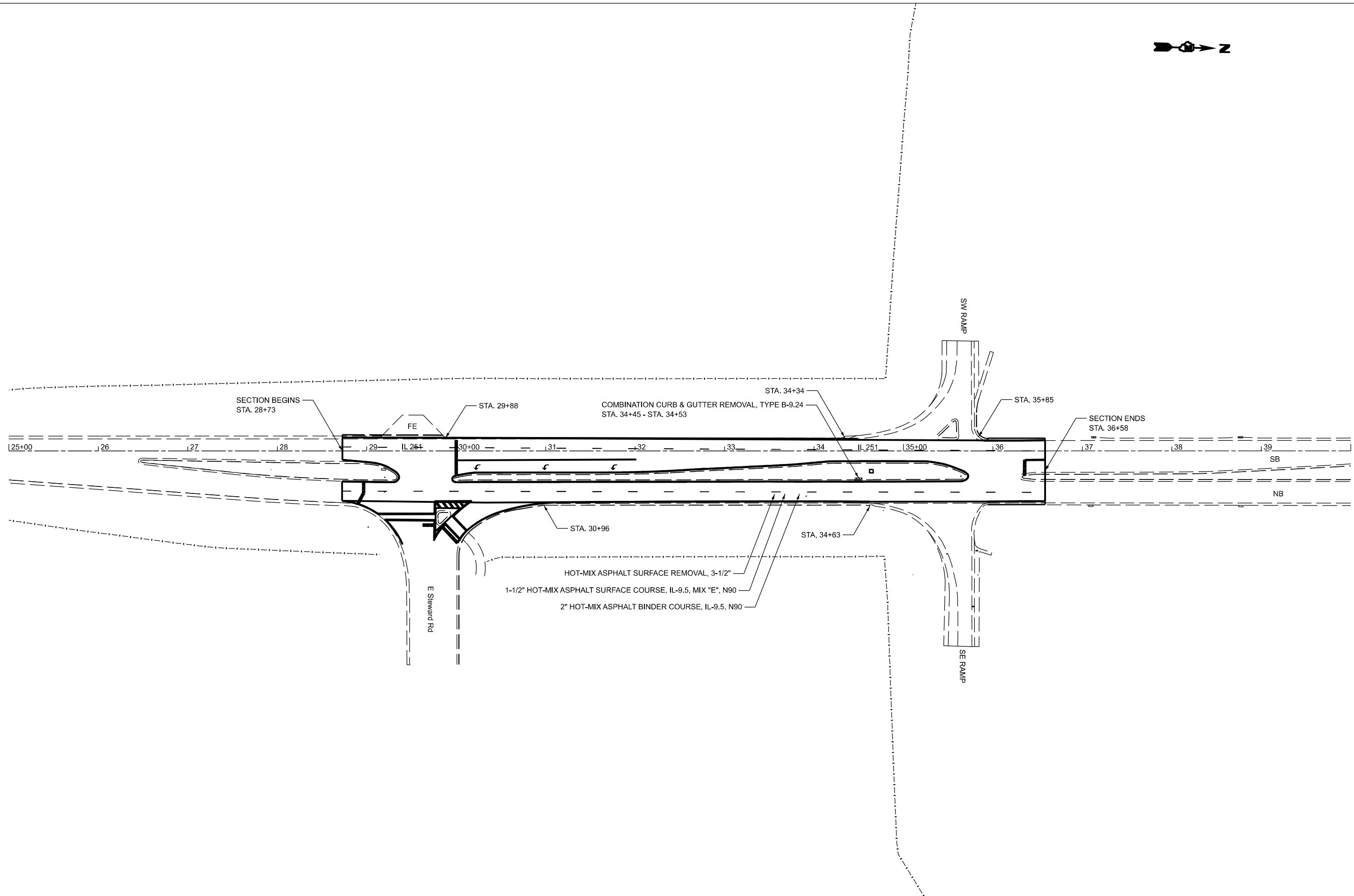
USER NAME = Eric.Thomas	DESIGNED -	REVISED -
PLOT SCALE = 0.1667' / in.	DRAWN -	REVISED -
PLOT DATE = 12/7/2022	CHECKED -	REVISED -
	DATE -	REVISED -

**STATE OF ILLINOIS  
DEPARTMENT OF TRANSPORTATION**

**HMA SCHEDULE**

SCALE: SHEET OF SHEETS STA. TO STA.

F.A.U. RTE.	SECTION	COUNTY	TOTAL SHEETS	SHEET NO.
5452	109 RS-1	OGLE	15	10
CONTRACT NO. 64S38				
ILLINOIS FED. AID PROJECT				



MODEL: IL25\_COLE\_Plan\_1 [Sheet]  
 FILE NAME: p:\projects\2024\2024-01-17\DOT\Documents\DOT\Office\District 2\ORD\Projects\64S38\Program Development\Studies & Plans\Design\CADD\CAD\Sheet\02\_64S38-Plan.dgn

USER NAME = Cristian.Rosas	DESIGNED -	REVISED -
	DRAWN -	REVISED -
PLOT SCALE = 0.16666633' / in.	CHECKED -	REVISED -
PLOT DATE = 1/17/2024	DATE -	REVISED -

**STATE OF ILLINOIS**  
**DEPARTMENT OF TRANSPORTATION**

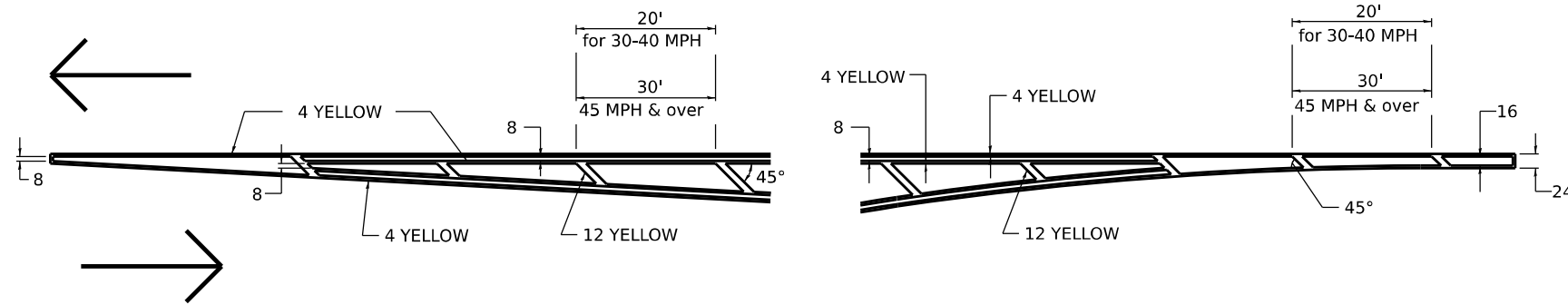
**PLAN SHEET**

SCALE: 1"=50'      SHEET 000 OF 4 SHEETS      STA.      TO STA.

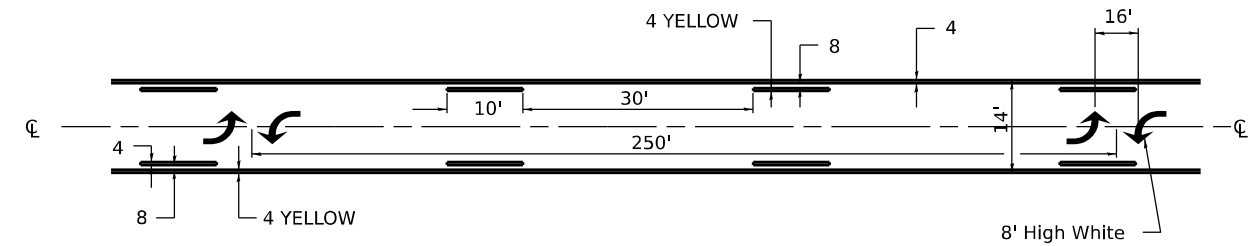
F.A.U. RTE.	SECTION	COUNTY	TOTAL SHEETS	SHEET NO.
5452	109 RS-1	OGLE	15	11
CONTRACT NO. 64S38				
ILLINOIS FED. AID PROJECT				

# TYPICAL PAVEMENT MARKINGS

## TYPICAL PAVEMENT MARKING FOR FLUSH MEDIAN AT LEFT TURN LANE

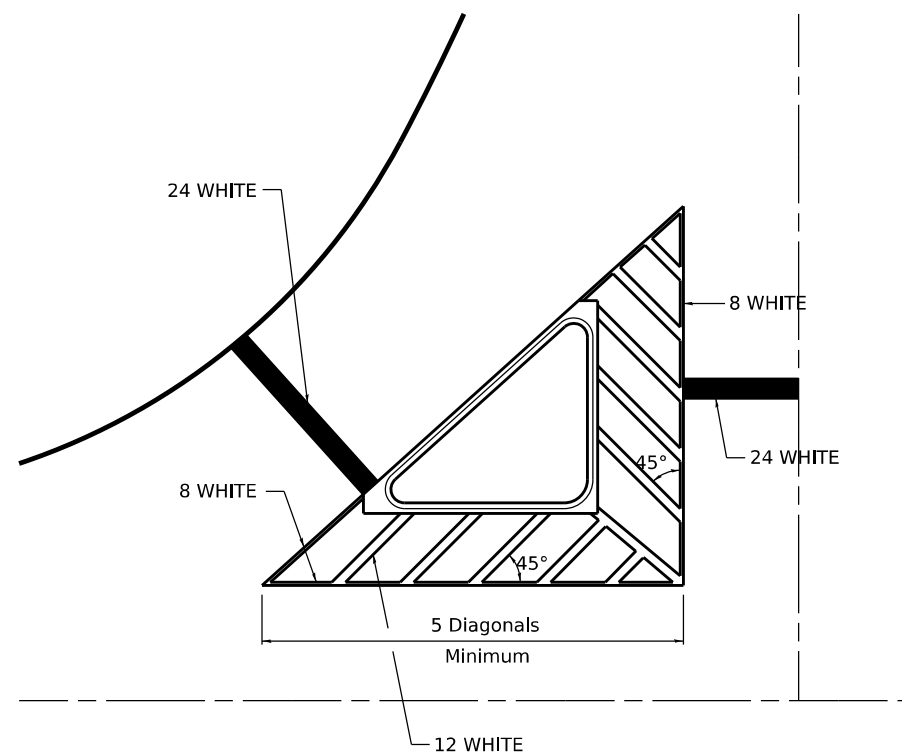


## MEDIAN PAVEMENT MARKING



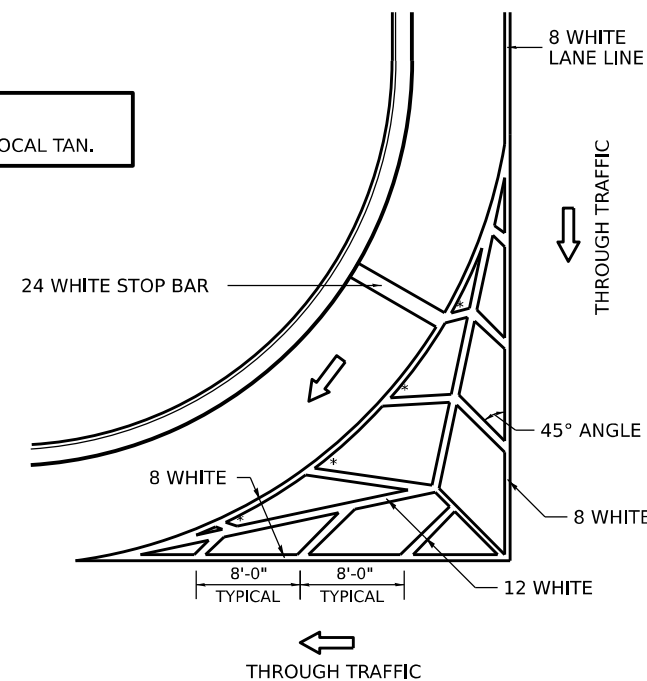
\*\* ALL DIMENSIONS ARE IN INCHES UNLESS OTHERWISE NOTED.

## TYPICAL ISLAND OFFSET SHOULDER WIDTH



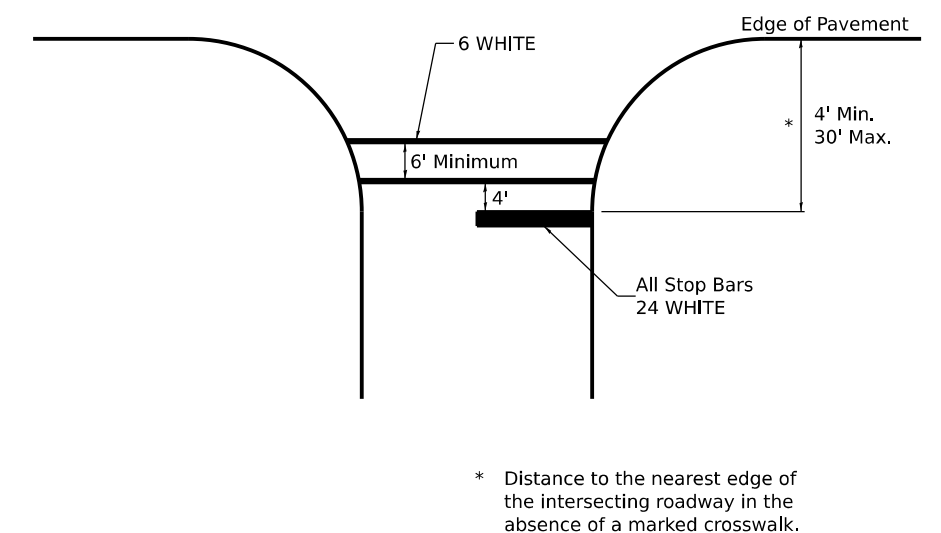
## TYPICAL MARKING FOR PAINTED ISLANDS

NOTE:  
\* 45° TO LOCAL TAN.



## STANDARD CROSSWALK MARKING

See Schedules for Locations



MODEL: SHT\_PLAN  
FILE NAME: C:\Bentley\CONNECT\10110\Organization-Civil\DOT\_Standards\Civil\DOT\_Sheets.cel

USER NAME = Eric.Thomas	DESIGNED -	REVISED - 6-27-14
PLOT SCALE = 0.1667"/in.	DRAWN -	REVISED - 3-05-12
PLOT DATE = 12/7/2022	CHECKED -	REVISED -
	DATE -	REVISED -

STATE OF ILLINOIS  
DEPARTMENT OF TRANSPORTATION

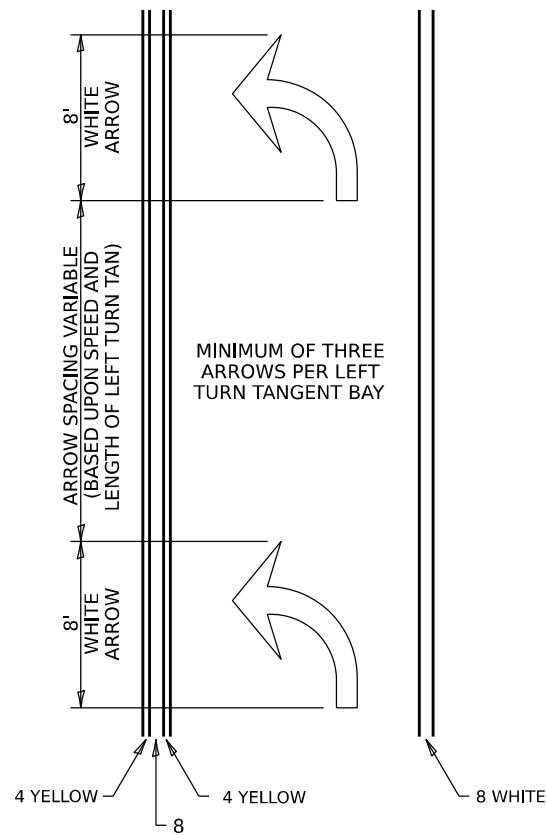
REGION 2 / DISTRICT 2 STANDARD

SCALE: SHEET OF SHEETS STA. TO STA.

F.A.U. RTE.	SECTION	COUNTY	TOTAL SHEETS	SHEET NO.
5452	109 RS-1	OGLE	15	12
CONTRACT NO. 64S38				
ILLINOIS FED. AID PROJECT				

# TYPICAL PAVEMENT MARKINGS

## ARROW LAYOUT

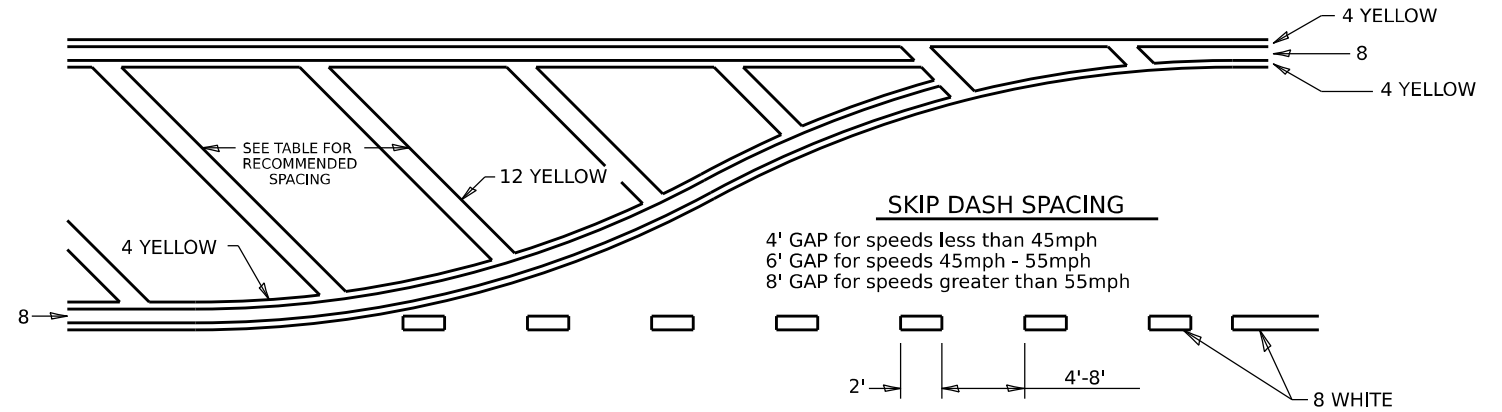


## SYMBOLS

- ◁ ONE-WAY AMBER MARKER
- ◁ ONE-WAY CRYSTAL MARKER
- ◊ TWO-WAY AMBER MARKER

ALL DIMENSIONS ARE IN INCHES UNLESS OTHERWISE NOTED.

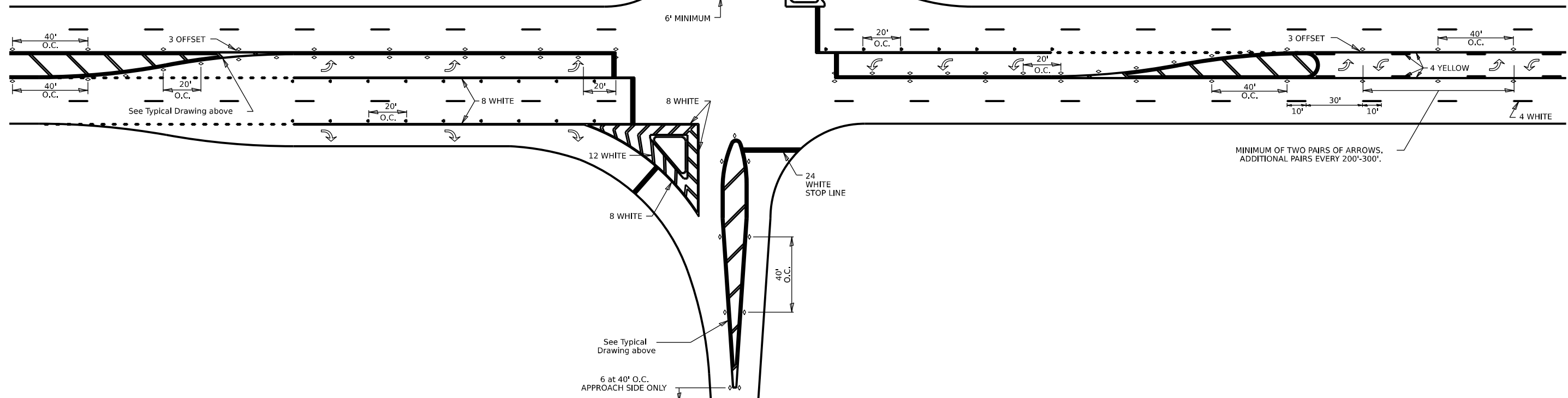
## TYPICAL PAVEMENT MARKING FOR FLUSH MEDIAN



## RECOMMENDED SPACING BETWEEN DIAGONALS (IN FEET)

Speed Limit Range	Continuous Median Area	Intersection Channelization	Objects (Islands)
less than 30MPH	50'	15'	10'
30-40MPH	75'	20'	15'
45MPH & over	75'	30'	20'

NOTE: if the spacing recommended in the Table does not permit at least five diagonal lines in the area being marked, the spacing from the next lowest speed range should be used. The recommended spacing is measured parallel to the pavement center line.



MODEL: SHT\_PLAN  
FILE NAME: C:\Bentley\CONNECT1011\Organization\Chil\IDOT\_Standards\Civil\IDOT\_Sheets.dwg

USER NAME = Eric.Thomas	DESIGNED -	REVISED - 6-27-14
	DRAWN -	REVISED - 3-05-12
PLOT SCALE = 0.1667"/in	CHECKED -	REVISED -
PLOT DATE = 12/7/2022	DATE -	REVISED -

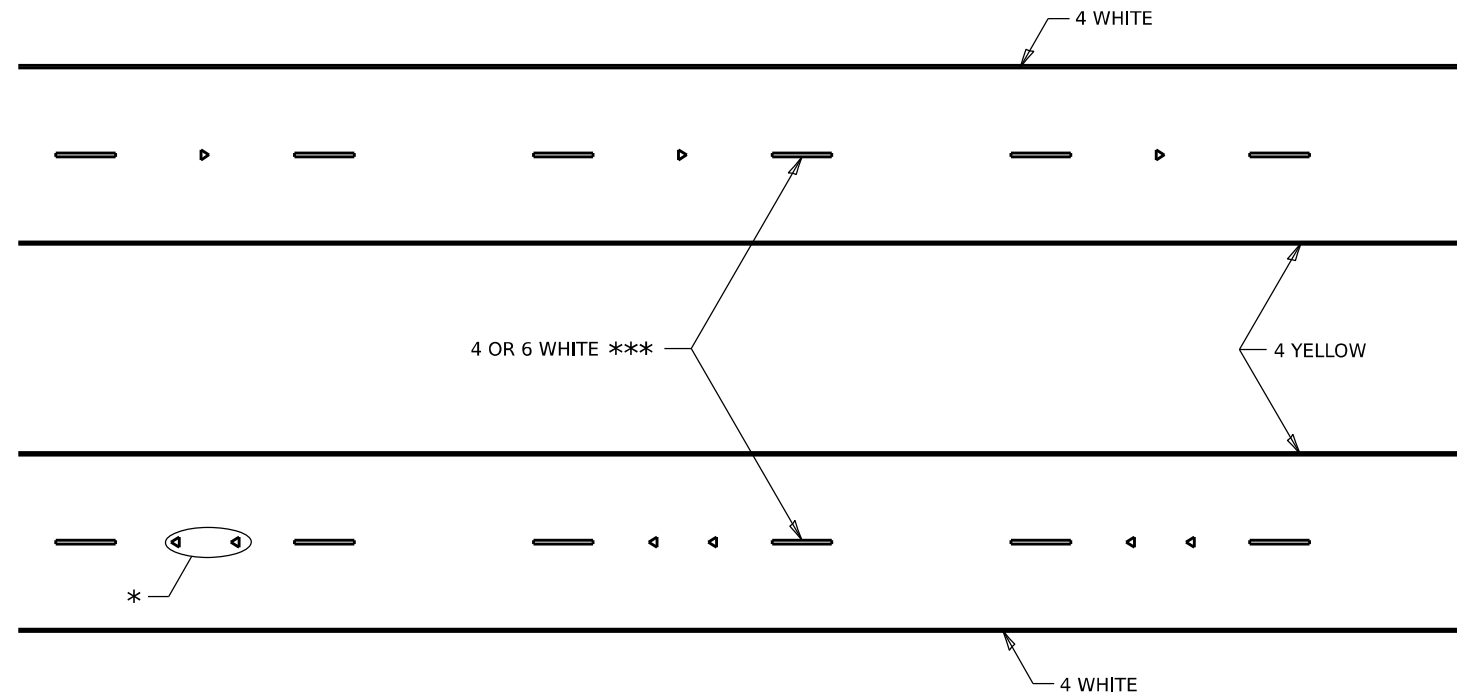
STATE OF ILLINOIS  
DEPARTMENT OF TRANSPORTATION

REGION 2 / DISTRICT 2 STANDARD

SCALE: SHEET OF SHEETS STA. TO STA.

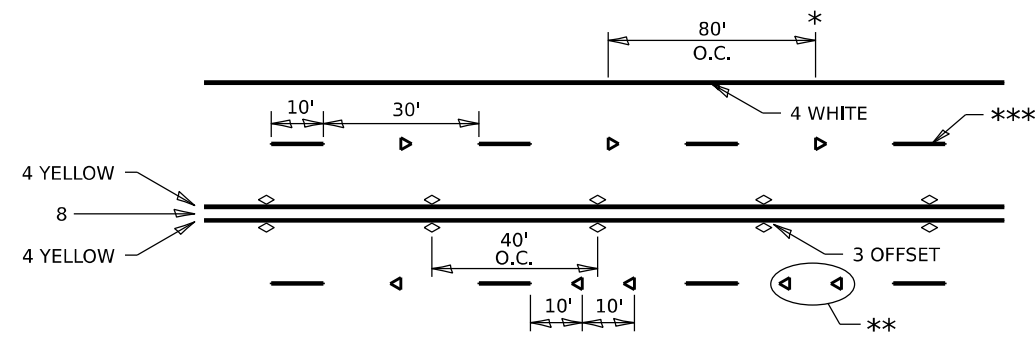
F.A.U. RTE.	SECTION	COUNTY	TOTAL SHEETS	SHEET NO.
5452	109 RS-1	OGLE	15	13
CONTRACT NO. 64S38				
ILLINOIS FED. AID PROJECT				

# TYPICAL PAVEMENT MARKINGS



\* SEE HIGHWAY STANDARD 781001 FOR SPACING DETAILS.  
USE DOUBLE MARKERS WHEN ADT ≥ 20,000.

## MULTI-LANE / DIVIDED



\* REDUCE TO 40' O.C. ON CURVES WHERE ADVISORY SPEEDS ARE  
10 MPH LOWER THAN POSTED SPEEDS.

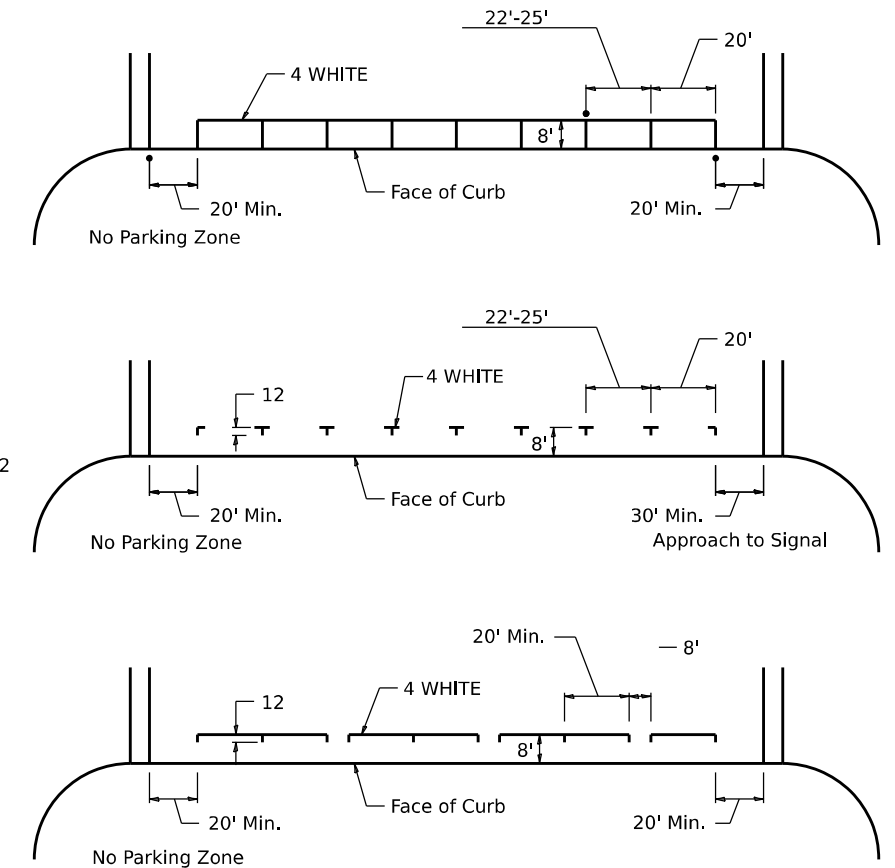
\*\* USE DOUBLE MARKERS WHEN ADT ≥ 20,000

\*\*\* CENTERLINE SKIP DASH PAVEMENT MARKING SPEED LIMIT  
LESS THAN 40 MPH USE 4" LINE. SPEED LIMIT 40 MPH AND  
OVER USE 6" LINE.

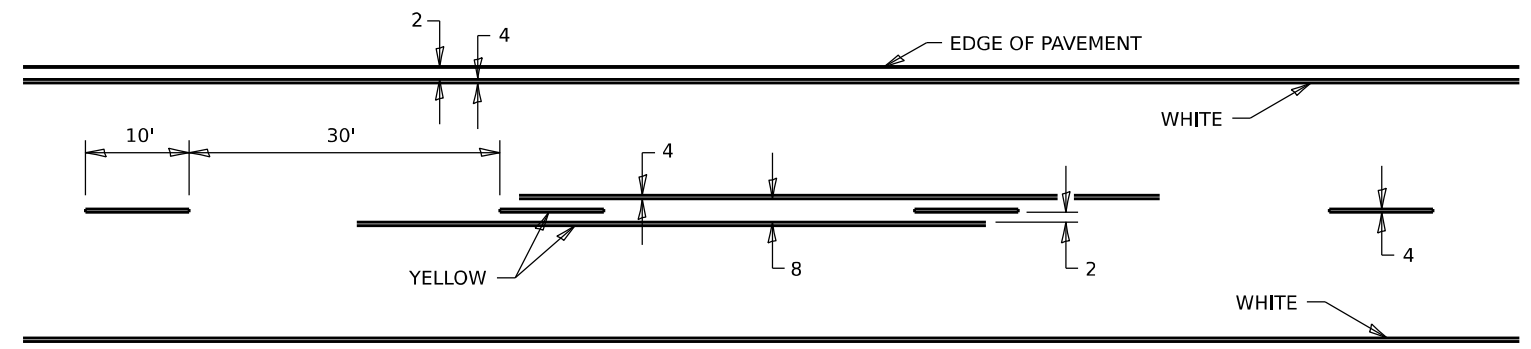
## MULTI-LANE / UNDIVIDED & ONE WAY

(FOR MULTI-LANE UNDIVIDED HIGHWAYS USE THIS  
DETAIL NOT HIGHWAY STANDARD 781001)

## TYPICAL PARKING SPACING



## TYPICAL PAVEMENT MARKING FOR TWO LANE SECTION – NO PASSING ZONES



MODEL: SHT\_PLAN  
FILE NAME: C:\Bentley\CONNECT1011\Organization\Chil\DOT\_Standards\Civil\DOT\_Sheets.cad

USER NAME = Eric.Thomas	DESIGNED -	REVISED - 6-27-14
PLOT SCALE = 0.1667"/in.	DRAWN -	REVISED - 8-27-13
PLOT DATE = 12/7/2022	CHECKED -	REVISED - 11-28-12
	DATE -	REVISED -

STATE OF ILLINOIS  
DEPARTMENT OF TRANSPORTATION

REGION 2 / DISTRICT 2 STANDARD

SCALE: SHEET OF SHEETS STA. TO STA.

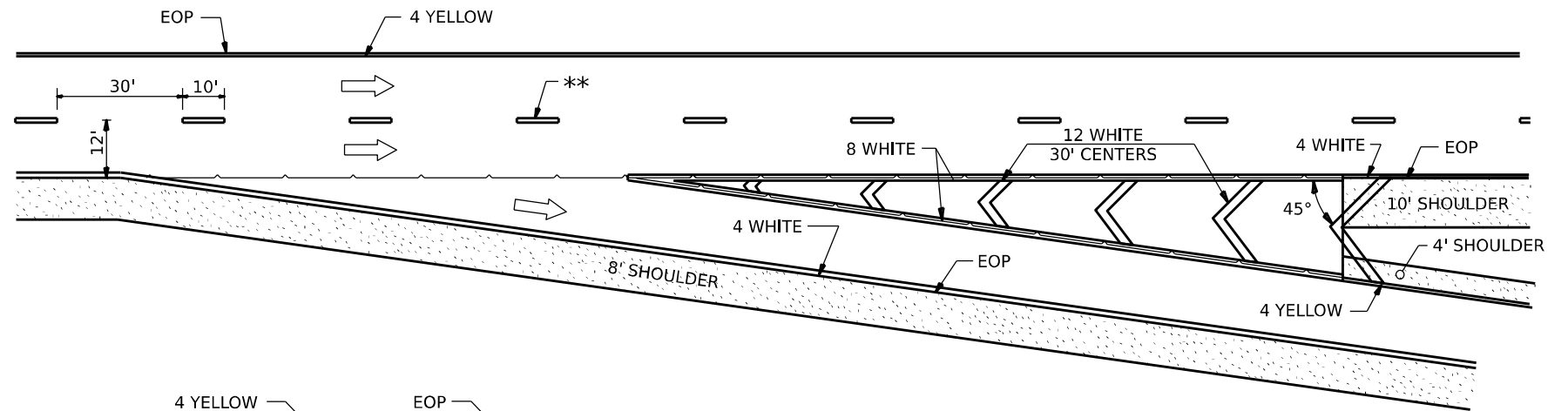
F.A.U. RTE.	SECTION	COUNTY	TOTAL SHEETS	SHEET NO.
5452	109 RS-1	OGLE	15	14
CONTRACT NO. 64S38				
ILLINOIS FED. AID PROJECT				

# TYPICAL PAVEMENT MARKINGS

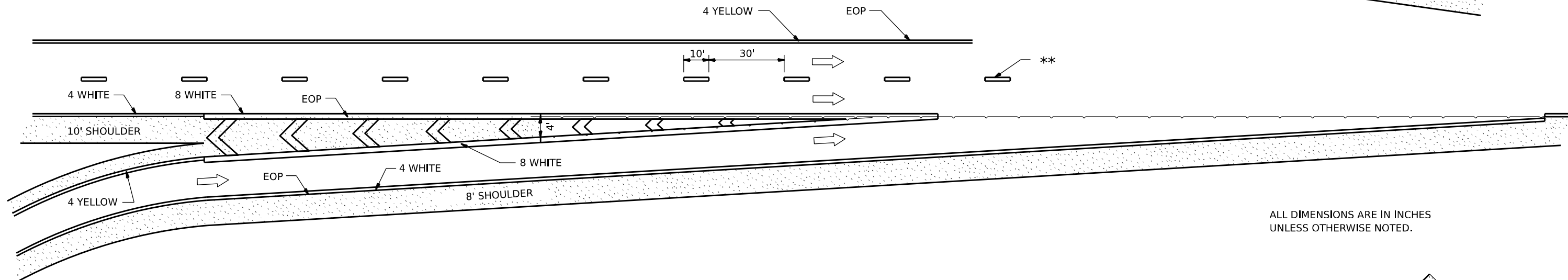
\*\* 6" WHITE ON INTERSTATES, WHERE THE SPPED LIMIT IS 65 MPH, OR WHEN DIRECTED BY THE ENGINEER.  
4" WIDE AT ALL OTHER LOCATIONS.

NOTE: GORE HATCHING PLACED ONLY WHEN SCHEDULED IN THE PLANS

## EXIT RAMP

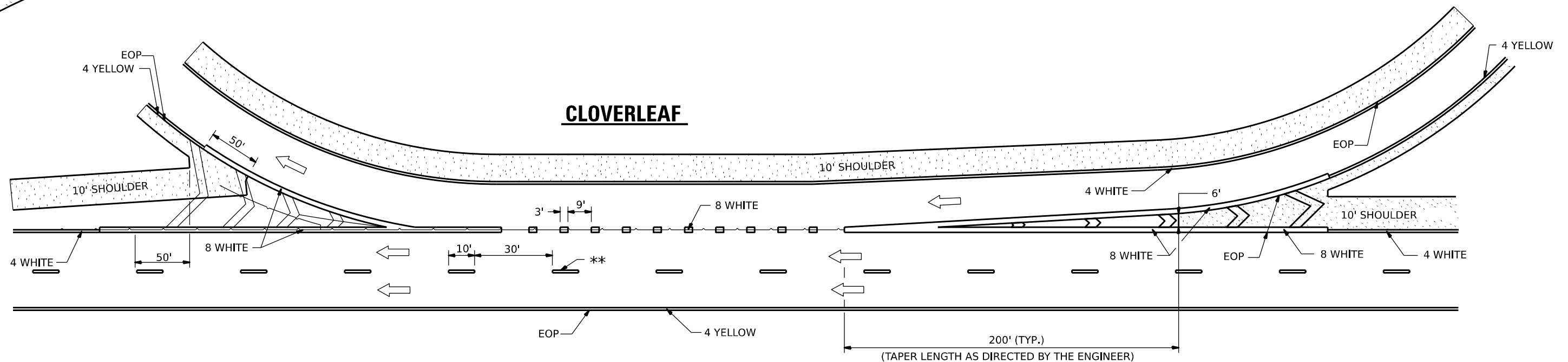


## ENTRANCE RAMP



ALL DIMENSIONS ARE IN INCHES UNLESS OTHERWISE NOTED.

## CLOVERLEAF



MODEL: SHT\_PLAN  
FILE NAME: C:\Bentley\CONNECT1011\Organization\Chil\IDOT\_Standards\CallIDOT\_Sheets.dwg

USER NAME = Eric.Thomas	DESIGNED -	REVISED - 9-15-23
	DRAWN -	REVISED - 8-27-13
PLOT SCALE = 0.1667"/in.	CHECKED -	REVISED - 10-18-11
PLOT DATE = 12/7/2022	DATE -	REVISED -

STATE OF ILLINOIS  
DEPARTMENT OF TRANSPORTATION

REGION 2 / DISTRICT 2 STANDARD

SCALE: SHEET OF SHEETS STA. TO STA.

F.A.U. RTE.	SECTION	COUNTY	TOTAL SHEETS	SHEET NO.
5452	109 RS-1	OGLE	15	15
CONTRACT NO. 64S38				
ILLINOIS FED. AID PROJECT				