

STATE OF ILLINOIS
DEPARTMENT OF TRANSPORTATION

F.A.P. RTE.	SECTION	COUNTY	TOTAL SHEETS	SHEET NO.
317	(20R)TS-1	IROQUOIS	12	1
		ILLINOIS	CONTRACT NO. 66N97	

INDEX

- 1 COVER SHEET
- 2 GENERAL NOTES
- 3-5 SUMMARY OF QUANTITIES
- 6 TRAFFIC SIGNAL REMOVAL PLAN
- 7 PROPOSED TRAFFIC SIGNAL PLAN
- 8 TEMPORARY TRAFFIC SIGNAL PLAN
- 9 CABLE PLAN AND PHASE DESIGNATION
- 10 SIGN SCHEDULE AND DETAILS
- 11 MAST ARM DETAILS
- 12 SOIL BORINGS

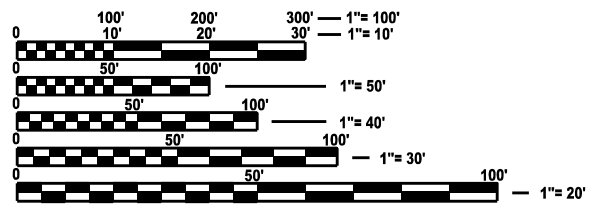
**PROPOSED
HIGHWAY PLANS**

**FAP ROUTE 317 (US 24)
SECTION (20R)TS-1
PROJECT: NHPP - NAYN(781)
TRAFFIC SIGNAL MAST ARM REPLACEMENT
IROQUOIS COUNTY**

C-93-042-24

LIST OF ILLINOIS DOT HIGHWAY STANDARDS

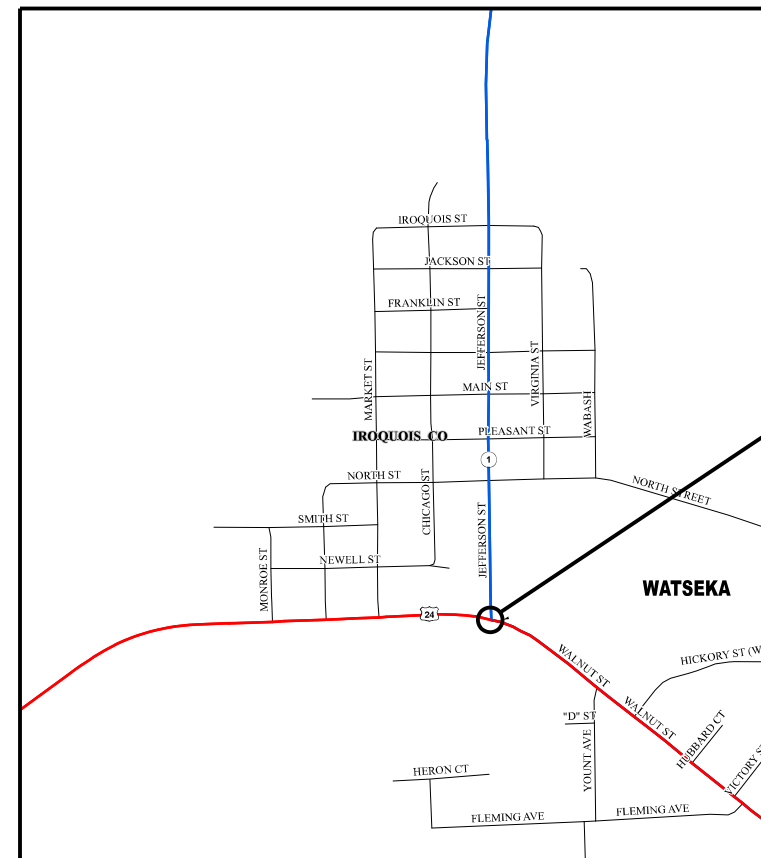
- 000001-08 STANDARD SYMBOLS, ABBREVIATIONS AND PATTERNS
- 001006 DECIMAL OF AN INCH AND OF A FOOT
- 701101-05 OFF-ROAD OPERATIONS, MULTILANE, 15' TO 24" FROM PAVEMENT EDGE
- 701106-02 OFF-ROAD OPERATIONS, MULTILANE, MORE THAN 15' AWAY
- 701701-10 URBAN LANE CLOSURE, MULTILANE INTERSECTION
- 701901-09 TRAFFIC CONTROL DEVICES
- 720016-04 MAST ARM MOUNTED STREET NAME SIGNS
- 857001-01 STANDARD PHASE DESIGNATION DIAGRAMS AND PHASE SEQUENCES
- 873001-02 TRAFFIC SIGNAL GROUNDING & BONDING
- 877001-08 STEEL MAST ARM ASSEMBLY AND POLE 16' THROUGH 55'
- 878001-11 CONCRETE FOUNDATION DETAILS
- 880006-01 TRAFFIC SIGNAL MOUNTING DETAILS



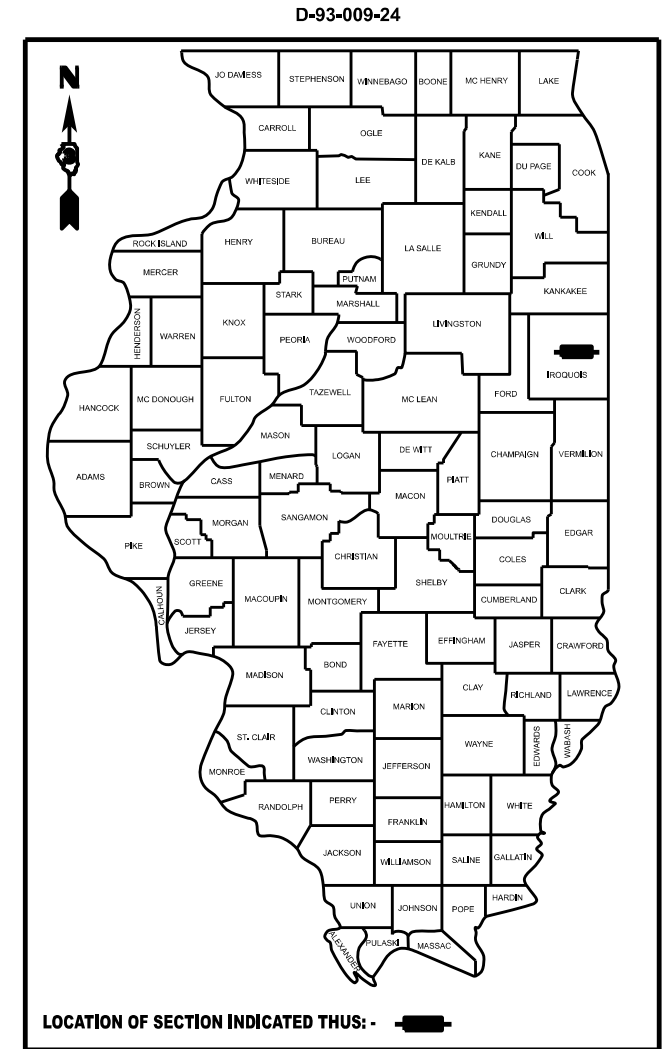
FULL SIZE PLANS HAVE BEEN PREPARED USING STANDARD ENGINEERING SCALES. REDUCED SIZED PLANS WILL NOT CONFORM TO STANDARD SCALES. IN MAKING MEASUREMENTS ON REDUCED PLANS, THE ABOVE SCALES MAY BE USED.

J.U.L.I.E.
JOINT UTILITY LOCATION INFORMATION FOR EXCAVATION
1-800-892-0123
OR 811

PROJECT ENGINEER: JOE KANNEL, P.E.
UNIT CHIEF: MOHAMED YOUSIF
DISTRICT 3 NO. (815)434-6131
CONTRACT NO. 66N97



LOCATION MAP
GROSS & NET LENGTH = POINT LOCATION



US 24 - OTHER ARTERIAL
2021 ADT = 7,800
P.V. = 90.4% S.U. = 3.5% M.U. = 6.1%

IL 1 - OTHER ARTERIAL
2021 ADT = 3,100
P.V. = 94.2% S.U. = 3.5% M.U. = 2.3%

STATE OF ILLINOIS
DEPARTMENT OF TRANSPORTATION

SUBMITTED January 31 2024
Stephen Kannel REGIONAL ENGINEER

March 22, 2024 *Scott A. Etkin*
ENGINEER OF DESIGN AND ENVIRONMENT

March 22, 2024 *Stephen M. Smith*
DIRECTOR OF HIGHWAYS PROJECT IMPLEMENTATION

**PRINTED BY THE AUTHORITY
OF THE STATE OF ILLINOIS**

GENERAL NOTES

1. THE TRAFFIC SIGNAL SECTION AT THE ILLINOIS DEPARTMENT OF TRANSPORTATION, DISTRICT 3, SHALL BE NOTIFIED AT 815-434-6131 AT LEAST 72 HOURS PRIOR TO TURNING ON ANY FLASHER OR CONTROLLER UNITS.
2. THE CONTRACTOR SHALL BE RESPONSIBLE FOR PROTECTING UTILITY PROPERTY DURING CONSTRUCTION OPERATIONS AS OUTLINED IN ARTICLE 107.31 OF THE STANDARD SPECIFICATIONS. A MINIMUM OF 48 HOURS ADVANCE NOTICE IS REQUIRED FOR NON-EMERGENCY WORK. THE JULIE NUMBER IS 800-892-0123. THE MEMBERS OF JULIE KNOWN TO BE WITHIN THE LIMITS OF THE IMPROVEMENT ARE:
 - AT&T
 - AMEREN ILLINOIS
 - MEDIACOM
 - METRO COMMUNICATIONS
 - NICOR
 - CITY OF WATSEKA
3. THE CONTRACTOR'S ATTENTION IS DIRECTED TO THE PRESENCE OF DEPARTMENT-OWNED UNDERGROUND ELECTRICAL CABLE WITHIN THE LIMITS OF THE PROPOSED IMPROVEMENT. THE CONTRACTOR SHALL REQUEST THE ILLINOIS DEPARTMENT OF TRANSPORTATION IN OTTAWA (815-434-8417) TO LOCATE THE UNDERGROUND FACILITIES, PROVIDING A MINIMUM OF 72 HOURS NOTICE. THE DEPARTMENT IS NOT A MEMBER OF THE JOINT UTILITY LOCATING INFORMATION FOR EXCAVATORS (JULIE) SYSTEM.
4. ALL DAMAGE TO DEPARTMENT OWNED UNDERGROUND FACILITIES, CAUSED BY THE CONTRACTOR SHALL BE REPAIRED TO THE SATISFACTION OF THE ENGINEER AND AT NO EXPENSE TO THE DEPARTMENT. THIS SHALL INCLUDE ALL TEMPORARY REPAIRS REQUIRED TO KEEP THE FACILITY OPERATIONAL WHILE MATERIAL IS BEING OBTAINED TO MAKE PERMANENT REPAIRS, SPLICING OF ELECTRIC CABLE WILL NOT BE ALLOWED. ELECTRIC CABLE SHALL BE REPLACED FROM POLE TO POLE OR CONTROLLER.
5. ALL TRAFFIC CONTROL AND OTHER ADVISORY SIGNS NEEDED FOR CONSTRUCTION ARE TO BE FURNISHED BY THE CONTRACTOR IN ACCORDANCE WITH SECTION 701 OF THE STANDARD SPECIFICATIONS.
6. ALL TRAFFIC SIGNAL HEADS SHALL BE 12-INCH POLYCARBONATE
7. TRAFFIC SIGNAL HEADS SHALL BE PROPERLY COVERED PRIOR TO INTERSECTION TURN-ON OR AS DIRECTED BY THE ENGINEER. THIS COST SHALL BE INCLUDED WITH THE COST OF THE ASSOCIATED TRAFFIC SIGNAL PAY ITEMS.
8. A 1/4" DIAMETER CONTINUOUS RODENT RESISTANT NYLON ROPE SHALL BE FURNISHED AND LEFT IN PLACE IN ALL CONDUITS BETWEEN HANDHOLES AND FOUNDATIONS OR CONTROLLER. THIS COST SHALL BE INCLUDED WITH THE COST OF CONDUIT PAY ITEM.
9. THE CONTRACTOR SHALL ARRANGE FOR A FACTORY OR SUPPLIER REPRESENTATIVE TO BE PRESENT AT THE INTERSECTION WHEN THE SIGNAL IS TURNED ON. COST TO BE INCLUDED WITH THE TRAFFIC SIGNAL CONTROLLER PAY ITEM.

10. ALL CONDUIT IN TRENCH SHALL BE P.V.C. ALL PUSHED CONDUIT MAY BE P.V.C. OR GALVANIZED STEEL. CONDUIT ATTACHED TO STRUCTURES SHALL BE GALVANIZED STEEL.
11. NO ADDITIONAL COMPENSATION WILL BE ALLOWED FOR PLACING CONDUIT AT A GREATER THAN 2' MINIMUM DEPTH TO AVOID OBSTACLES SUCH AS UNDERGROUND UTILITIES.
12. THE ELECTRICAL CONDUCTORS FOR ALL TRAFFIC SIGNAL HEADS SHALL BE SOLID, SOFT COPPER.
13. ALL THREADS OF BOLTS USED IN THE ASSEMBLY OF TRAFFIC SIGNAL COMPONENTS SHALL BE COATED WITH A NON-LEAD BASED ANTI-SEIZE COMPOUND, SIMILAR TO LEAD PLATE, PRIOR TO ASSEMBLY.
14. ALL HARDWARE SHALL BE TIGHTENED AND WELL SECURED, CABLES SHALL BE NEATLY WOUND IN HANDHOLES. CABLES SHALL BE NEATLY TRAINED IN THE CONTROLLER CABINET.
15. ALL TRAFFIC SIGNAL WIRING SHALL EXTEND FROM CONTROLLER TO SIGNAL. SPLICES IN JUNCTION BOXES WILL NOT BE ALLOWED.
16. ALL GROUNDING MATERIALS FOR CONCRETE FOUNDATIONS SHALL REFER TO SECTION 807 OF THE STANDARD SPECIFICATIONS.
17. ALL AREAS DISTURBED BY THE CONTRACTOR SHALL BE RESTORED WITH SEED OR SOD TO THE SATISFACTION OF THE ENGINEER. SEEDING OR SODDING SHALL NOT BE PERMITTED AT ANY TIME WHEN THE GROUND IS FROZEN, WET, OR IN AN UNTILLABLE CONDITION.
18. THE MAST ARM FOUNDATIONS SHALL BE LOCATED A MINIMUM 6' FROM THE FACE OF CURB OR A MINIMUM 18' FROM THE EDGE OF PAVEMENT TO THE FACE OF FOUNDATION WHERE THERE IS NO CURB, UNLESS OTHERWISE DIRECTED BY THE ENGINEER. IN CURB AREA, GET MORE THAN 6' IF POSSIBLE IF THE SIGNAL HEAD STILL LINES UP IN CENTER OF LANE.
19. ANY EXCAVATED MATERIAL, WHICH INCLUDES DIGGING OR GRADING OF ANY SOIL OR FILL MATERIAL, WITH THE EXCEPTION OF AGGREGATE FILLS, MUST BE INCORPORATED WITHIN THE IDOT RIGHT OF WAY DUE TO ENVIRONMENTAL DOCUMENTATION REQUIREMENTS.
20. THE LOCATION OF EXISTING UTILITIES AS SHOWN ON THE PLANS HAVE BEEN LOCATED AT THE TIME OF SURVEY, OR BASED ON AVAILABLE EXISTING INFORMATION. NO GUARANTEE IS IMPLIED THAT ALL UTILITIES HAVE BEEN LOCATED OR DEPICTED ON THE PLANS. THE CONTRACTOR SHALL BE RESPONSIBLE FOR VERIFYING THE EXACT LOCATION OF ALL UTILITIES. IT MAY BE NECESSARY TO HAND DIG TEST HOLES TO EXPOSE EXISTING UTILITIES AT SOME LOCATIONS.

COMMITMENTS:

1. IT IS THE CONTRACTOR'S RESPONSIBILITY TO CONTACT THE ELECTRICAL UTILITY COMPANY TO OBTAIN PRIOR APPROVAL THAT ALL MINIMUM OVERHEAD ELECTRICAL UTILITY CLEARANCE REQUIREMENTS ARE MET DUE TO THE INSTALLATION OF THE NEW MAST ARM ASSEMBLIES. IF ANY SHIELDING OR PROTECTION OF THE EXISTING POWERLINES (TEMPORARY OR PERMANENT) OR ANY OTHER REQUIREMENTS ARE NEEDED AS REQUESTED BY THE UTILITY PROVIDER, THE CONTRACTOR SHALL SUPPLY ALL LABOR AND MATERIALS TO COMPLETE THIS REQUEST. THIS COST SHOULD BE INCLUDED IN THE APPLICABLE PAY ITEMS TO COMPLETE THIS WORK.
2. CONTRACTOR SHALL PROVIDE WRITTEN DOCUMENTATION TO THE RESIDENT ENGINEER THAT THE MINIMUM OVERHEAD ELECTRICAL UTILITY CLEARANCE REQUIREMENTS ARE MET AND SATISFACTORY TO THE UTILITY PROVIDER FOR THE NEWLY CONSTRUCTED MAST ARM ASSEMBLIES.

STATE OF ILLINOIS
DEPARTMENT OF TRANSPORTATION
DISTRICT THREE
AS BUILT INFORMATION

SUPERVISING CONSTRUCTION FIELD ENGINEER

RESIDENT ENGINEER / TECHNICIAN

START & END DATES
OF CONSTRUCTION: _____

INSPECTORS: _____

MODEL: D:\in\h... FILE NAME: p:\illinois\dot\documents\DOT\Office\Dist3\CORD Project\66N97\CORD\66N97_coversheet.dgn

USER NAME = Jon.Woodyer		DESIGNED -	REVISED -	STATE OF ILLINOIS DEPARTMENT OF TRANSPORTATION	GENERAL NOTES			F.A.P. RTE.	SECTION	COUNTY	TOTAL SHEETS	SHEET NO.
PLOT SCALE = \$SCALE\$		DRAWN -	REVISED -					317	(20R)TS-1	IROQUOIS	12	2
PLOT DATE = 2/29/2024		CHECKED -	REVISED -		CONTRACT NO. 66N97							
		DATE -	REVISED -		SCALE:	SHEET 1	OF 1	SHEETS	STA.	TO STA.	ILLINOIS FED. AID PROJECT	

MODEL: D:\mch\...
 FILE NAME: ...
 PROJECT: ...
 DATE: ...

CODE NO.	ITEM	UNIT	TOTAL QUANTITY	CONSTRUCTION CODE	
				80% FED 20% STATE	
				TRAFFIC SIGNALS	
				0021	URBAN
* 66900200	NON-SPECIAL WASTE DISPOSAL	CU YD	11	11	
* 66900530	SOIL DISPOSAL ANALYSIS	EACH	1	1	
* 66901001	REGULATED SUBSTANCES PRE-CONSTRUCTION PLAN	L SUM	1	1	
* 66901003	REGULATED SUBSTANCES FINAL CONSTRUCTION REPORT	L SUM	1	1	
* 66901006	REGULATED SUBSTANCES MONITORING	CAL DA	2	2	
67100100	MOBILIZATION	L SUM	1	1	
70102635	TRAFFIC CONTROL AND PROTECTION, STANDARD 701701	L SUM	1	1	
* 72000100	SIGN PANEL - TYPE 1	SQ FT	47.5	47.5	
81028370	UNDERGROUND CONDUIT, PVC, 3" DIA	FOOT	45	45	
87300010	GROUNDING EXISTING HANDHOLE FRAME AND COVER	EACH	6	6	
87301245	ELECTRIC CABLE IN CONDUIT, SIGNAL NO. 14 5C	FOOT	1147	1147	
87301255	ELECTRIC CABLE IN CONDUIT, SIGNAL NO. 14 7C	FOOT	1194	1194	
87301900	ELECTRIC CABLE IN CONDUIT, EQUIPMENT GROUNDING CONDUCTOR, NO. 6 1C	FOOT	339	339	
87502500	TRAFFIC SIGNAL POST, GALVANIZED STEEL 16 FT.	EACH	1	1	

*= SPECIALTY ITEM

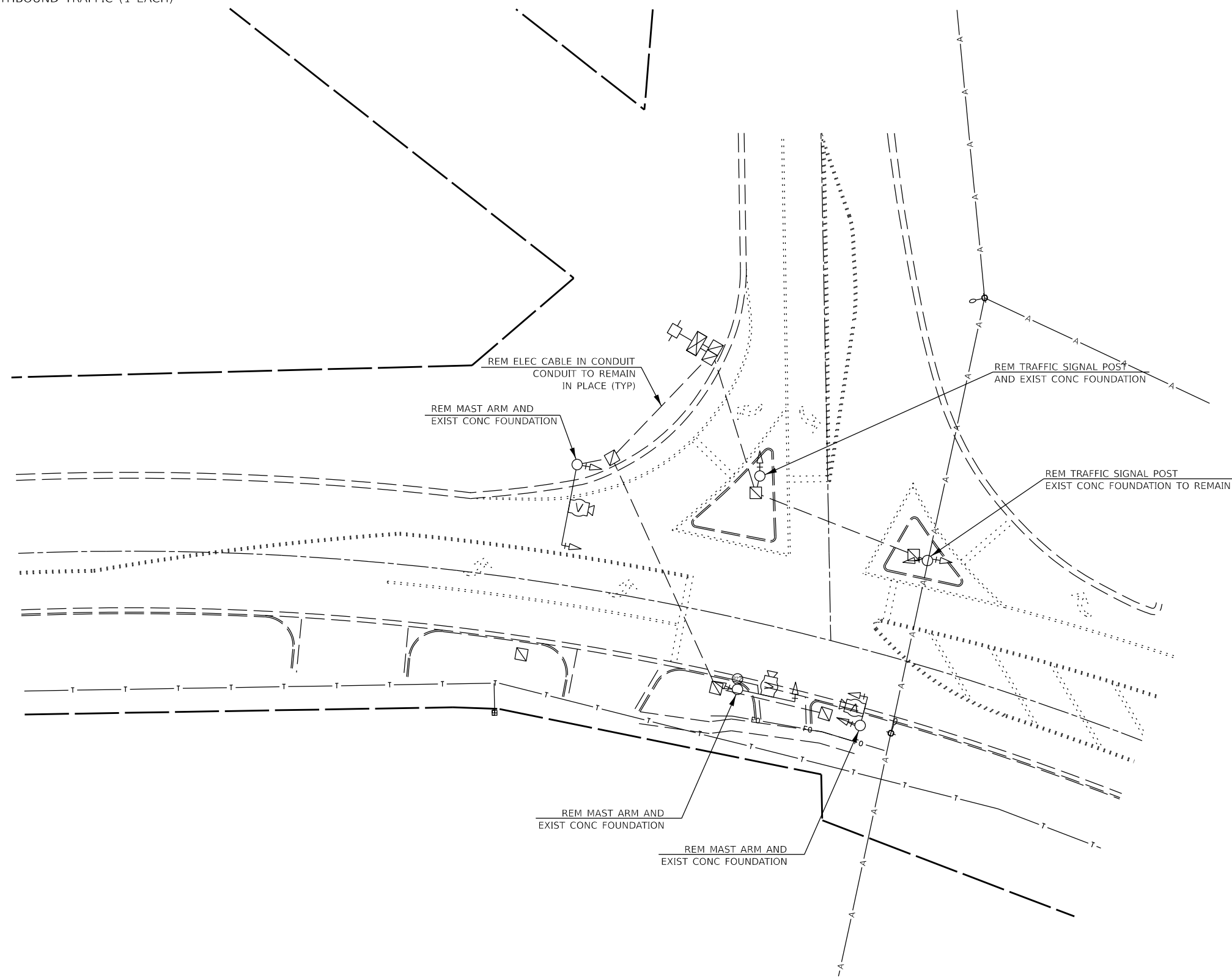
USER NAME = Jon.Woodyer	DESIGNED -	REVISED -	STATE OF ILLINOIS DEPARTMENT OF TRANSPORTATION	SUMMARY OF QUANTITIES			F.A.P. RTE.	SECTION	COUNTY	TOTAL SHEETS	SHEET NO.
PLOT SCALE = \$SCALE\$	DRAWN -	REVISED -					317	(20R)TS-1	IROQUOIS	12	3
PLOT DATE = 2/28/2024	CHECKED -	REVISED -		SCALE: SHEET 1 OF 3 SHEETS STA. TO STA.			CONTRACT NO. 66N97				
DATE -	REVISED -	REVISED -					ILLINOIS FED. AID PROJECT				

CONSTRUCTION NOTES:

REMOVAL OF THE FOLLOWING ITEMS SHALL BE PAID FOR AS REMOVE EXISTING

TRAFFIC SIGNAL EQUIPMENT:

- MAST ARM ASSEMBLY FOR EASTBOUND TRAFFIC (1 EACH)
- MAST ARM ASSEMBLY FOR WESTBOUND TRAFFIC (1 EACH)
- MAST ARM ASSEMBLY FOR SOUTHBOUND TRAFFIC (1 EACH)



TRAFFIC SIGNALS LEGEND

- EXISTING CONTROLLER AND CABINET
- EXISTING SIGNAL HEAD WITH BACKPLATE
- EXISTING STEEL MAST ARM ASSEMBLY
- EXISTING DOUBLE HANDHOLE
- EXISTING HANDHOLE
- EXISTING CONDUIT
- EXISTING VIDEO VEHICLE VEHICLE DETECTION
- EXISTING PTZ CAMERA

MODEL: Default
FILE NAME: c:\pwwork\wood\wood\p040918108\66N97 cover sheet.dgn

USER NAME = Jon.Woodyer	DESIGNED -	REVISED -
	DRAWN -	REVISED -
PLOT SCALE = 40,000' / in.	CHECKED -	REVISED -
PLOT DATE = 1/18/2024	DATE -	REVISED -

**STATE OF ILLINOIS
DEPARTMENT OF TRANSPORTATION**

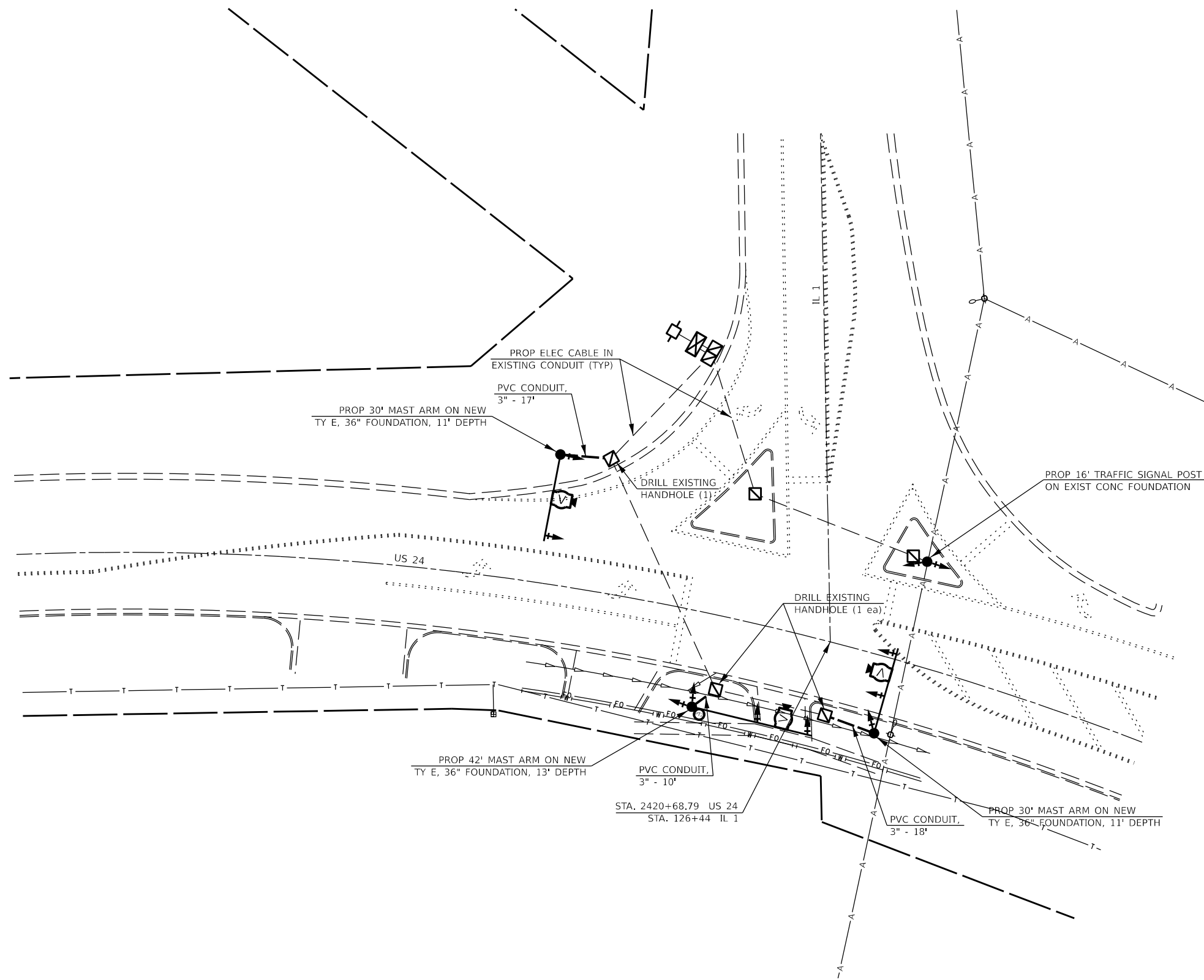
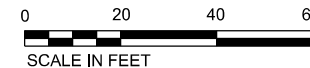
TRAFFIC SIGNAL REMOVAL PLAN

SCALE: SHEET 1 OF 1 SHEETS STA. TO STA.

F.A.P. RTE.	SECTION	COUNTY	TOTAL SHEETS	SHEET NO.
317	(20R)TS-1	IROQUOIS	12	6
CONTRACT NO. 66N97				
ILLINOIS FED. AID PROJECT				

NOTE:

WORK IS REQUIRED WITHIN 10' OF EXISTING POWER LINES.
IT IS THE RESPONSIBILITY OF THE CONTRACTOR TO DETERMINE IF SHIELDING OF THE POWER LINES IS NEEDED.



TRAFFIC SIGNALS LEGEND

- EXISTING CONTROLLER AND CABINET
- PROPOSED SIGNAL HEAD WITH BACKPLATE
- PROPOSED STEEL MAST ARM ASSEMBLY
- EXISTING DOUBLE HANDHOLE
- EXISTING HANDHOLE
- PROPOSED CONDUIT
- PROPOSED ELEC CABLE IN EXISTING CONDUIT
- RELOCATED VIDEO VEHICLE DETECTION
- RELOCATED PTZ CAMERA

MODEL: Default
FILE NAME: c:\pwwork\wood\wood\p040918108\66N97 cover sheet.dgn

USER NAME = Jon.Woodyer	DESIGNED -	REVISED -
	DRAWN -	REVISED -
PLOT SCALE = \$SCALE\$	CHECKED -	REVISED -
PLOT DATE = 2/28/2024	DATE -	REVISED -

**STATE OF ILLINOIS
DEPARTMENT OF TRANSPORTATION**

PROPOSED TRAFFIC SIGNAL PLAN

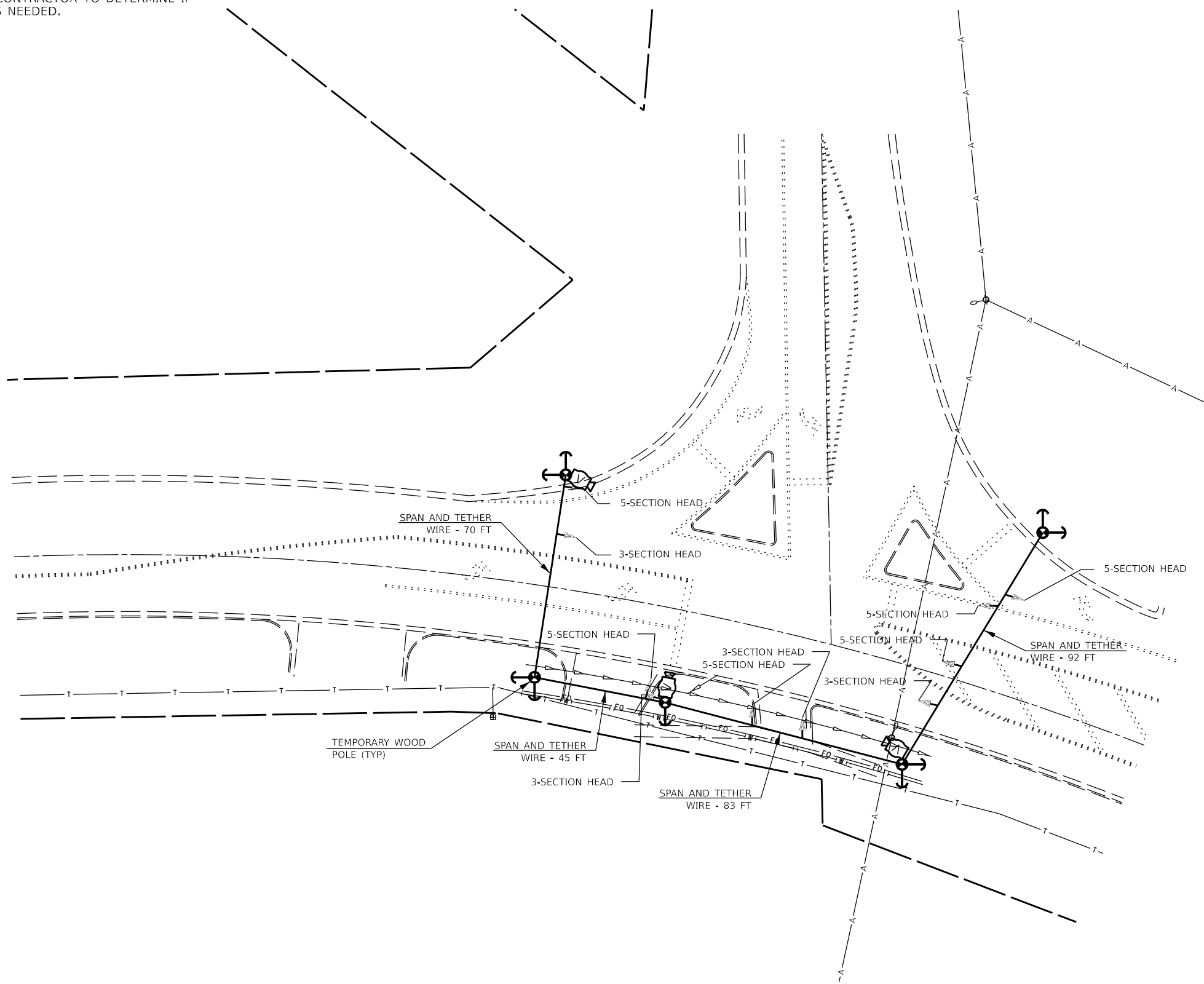
SCALE: SHEET 1 OF 1 SHEETS STA. TO STA.

F.A.P. RTE.	SECTION	COUNTY	TOTAL SHEETS	SHEET NO.
317	(20R)TS-1	IROQUOIS	12	7
CONTRACT NO. 66N97				
ILLINOIS FED. AID PROJECT				

NOTE:

REFER TO HIGHWAY STANDARD 880001-01
SPAN WIRE MOUNTED SIGNALS AND FLASHING BEACON INSTALLATION

WORK IS REQUIRED WITHIN 10' OF EXISTING POWER LINES.
IT IS THE RESPONSIBILITY OF THE CONTRACTOR TO DETERMINE IF
SHIELDING OF THE POWER LINES IS NEEDED.



TRAFFIC SIGNALS LEGEND

- TEMPORARY SIGNAL HEAD WITH BACKPLATE
- TEMPORARY VIDEO VEHICLE DETECTION
- TEMPORARY WOOD POLE

MODEL: Default
FILE NAME: c:\pwwork\wood\wood\p040918108\66N97 cover sheet.dgn

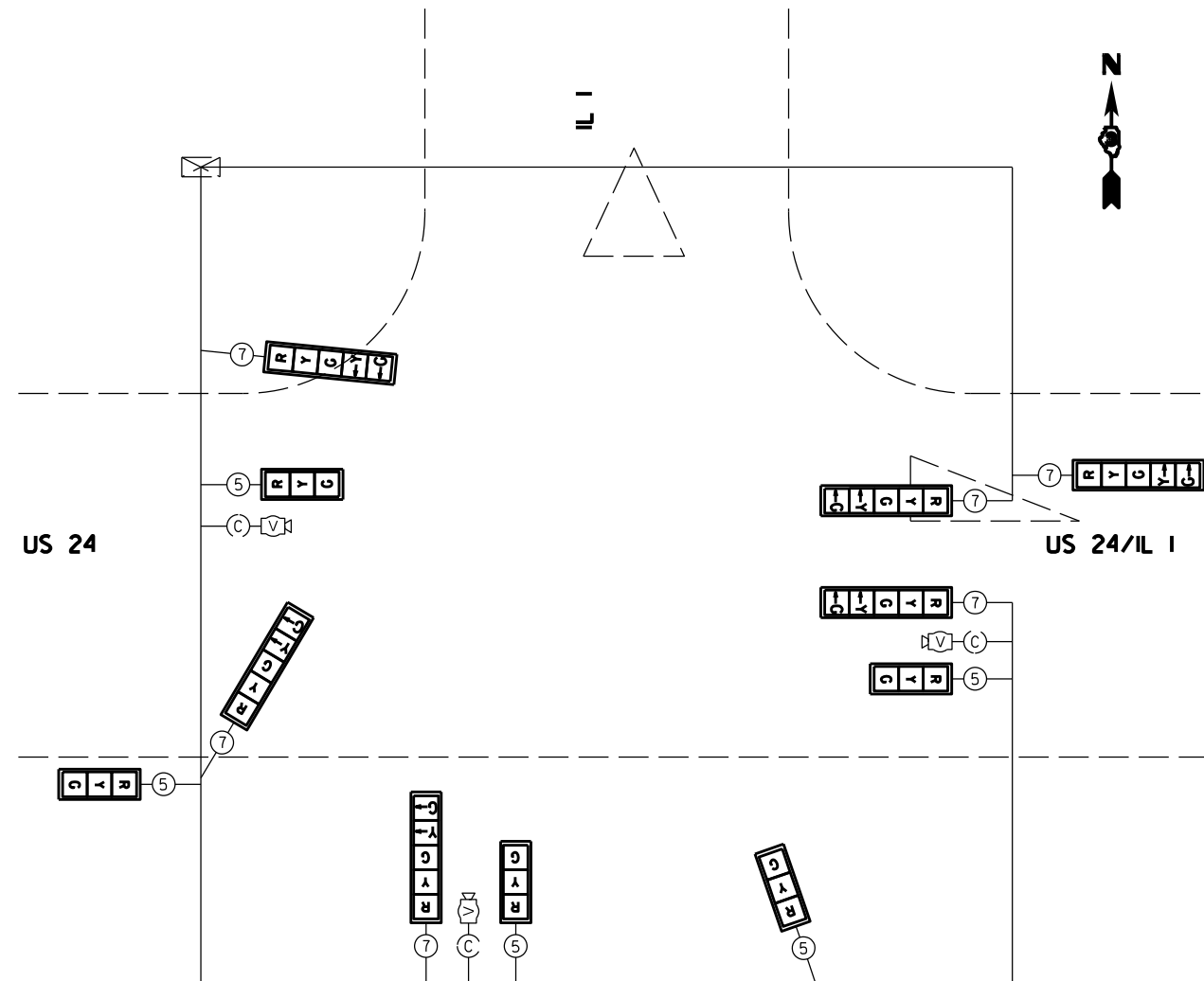
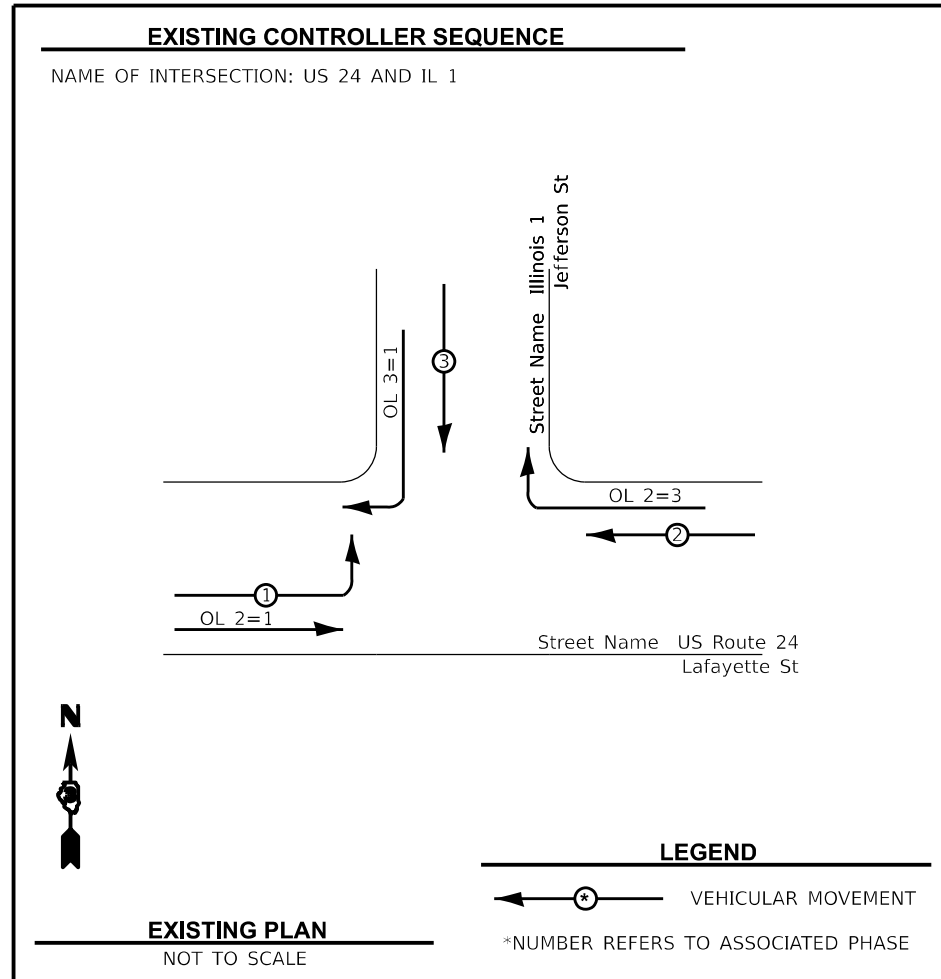
USER NAME = Jon.Woodyer	DESIGNED -	REVISED -
	DRAWN -	REVISED -
PLOT SCALE = \$SCALE\$	CHECKED -	REVISED -
PLOT DATE = 2/28/2024	DATE -	REVISED -

**STATE OF ILLINOIS
DEPARTMENT OF TRANSPORTATION**

TEMPORARY TRAFFIC SIGNAL PLAN

SCALE: SHEET 1 OF 1 SHEETS STA. TO STA.

F.A.P. RTE.	SECTION	COUNTY	TOTAL SHEETS	SHEET NO.
317	(20R)TS-1	IROQUOIS	12	8
CONTRACT NO. 66N97				
ILLINOIS FED. AID PROJECT				



- TRAFFIC SIGNALS LEGEND**
- (*) DENOTES NUMBER OF PROPOSED CONDUCTORS
 - (C) DENOTES EXISTING VIDEO DETECTION CABLE
 - ☒ EXISTING CONTROLLER AND CABINET
 - Ⓥ EXISTING VIDEO VEHICLE DETECTION
 - PROPOSED CABLE
 - - - EXISTING CABLE

MODEL: D:\in\h...
 FILE NAME: p:\illinois\p\...
 PROJECT: IROQUOIS COUNTY
 CONTRACT NO. 66N97

USER NAME = Jon.Woodyer	DESIGNED -	REVISED -
DRAWN -	REVISIONS -	
PLOT SCALE = 40,000' / in.	CHECKED -	REVISED -
PLOT DATE = 1/18/2024	DATE -	REVISED -

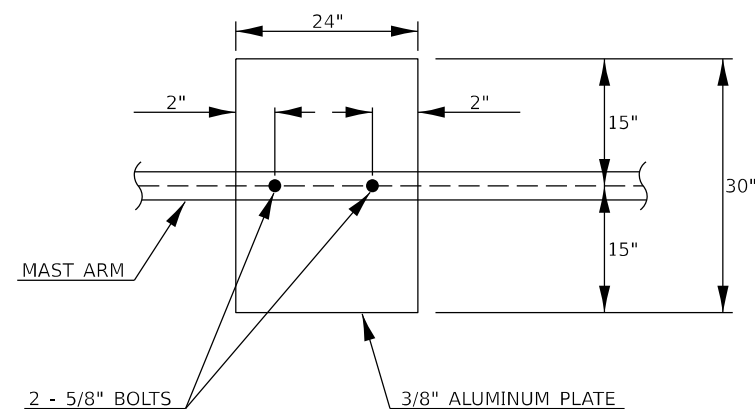
**STATE OF ILLINOIS
DEPARTMENT OF TRANSPORTATION**

CABLE PLAN AND PHASE DESIGNATION DIAGRAM

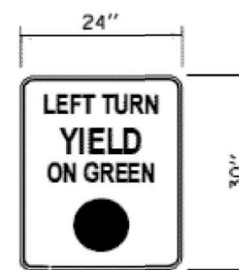
SCALE: SHEET 1 OF 1 SHEETS STA. TO STA.

F.A.P. RTE. 317	SECTION (20R)TS-1	COUNTY IROQUOIS	TOTAL SHEETS 12	SHEET NO. 9
CONTRACT NO. 66N97				
ILLINOIS FED. AID PROJECT				

SIGN SCHEDULE			
LOCATION/TYPE	SIZE	QUANTITY	SIGN PANEL TYPE 1
	INCHES	EACH	SQ FT
SOUTHBOUND MAST ARM			
US ROUTE 24 STREET NAME	60 x 30	1	12.5
EASTBOUND MAST ARM			
ILLINOIS 1 STREET NAME	60 x 30	1	12.5
LEFT TURN YIELD ON GREEN	24 x 30	1	5.0
EASTBOUND SIGNAL POST			
LEFT TURN YIELD ON GREEN	24 x 30	1	5.0
WESTBOUND MAST ARM			
ILLINOIS 1 STREET NAME	60 x 30	1	12.5
TOTAL		5.0	47.5



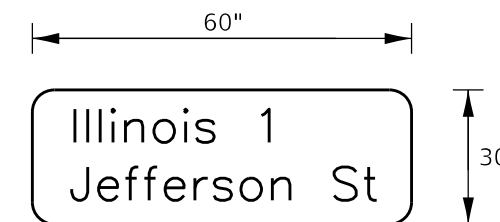
DAMPENING PLATE DETAIL (NTS)
(TOP VIEW) INCIDENTAL TO MAST ARM QTY



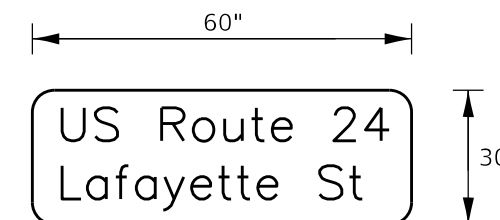
R10-12
TYPE AP SHEETING REQUIRED
5.0 SQ FT EACH (2) REQUIRED

LEFT TURN CONTROL SIGN DETAIL

THIS SIGN SHALL BE LOCATED 6 TO 12 INCHES TO THE RIGHT OF THE MAST ARM MOUNTED LEFT TURN SIGNAL HEAD.



TWO SIGNS 12.5 SQ FT EACH
UPPER CASE LETTERING, 8"
LOWER CASE LETTERING, 6"
WHITE ON GREEN TYPE ZZ SHEETING



ONE SIGN 12.5 SQ FT EACH
UPPER CASE LETTERING, 8"
LOWER CASE LETTERING, 6"
WHITE ON GREEN TYPE ZZ SHEETING

STATE OF ILLINOIS
DEPARTMENT OF TRANSPORTATION

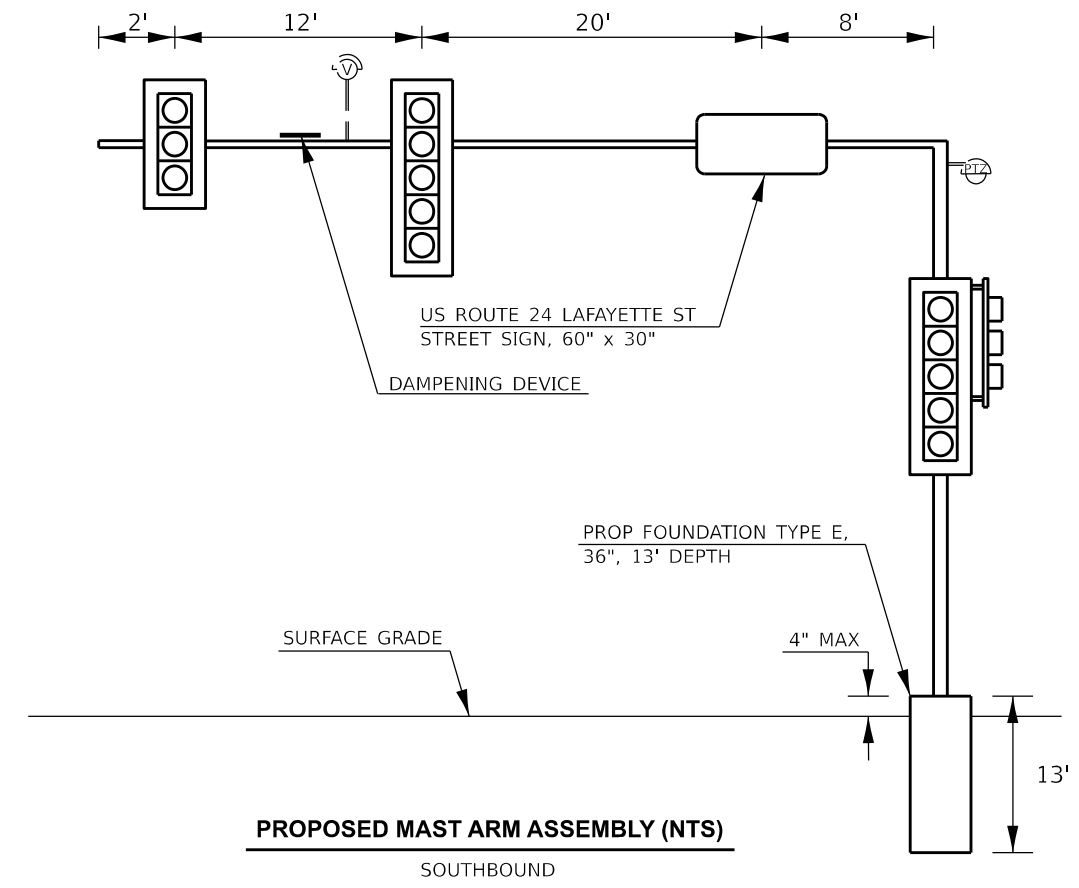
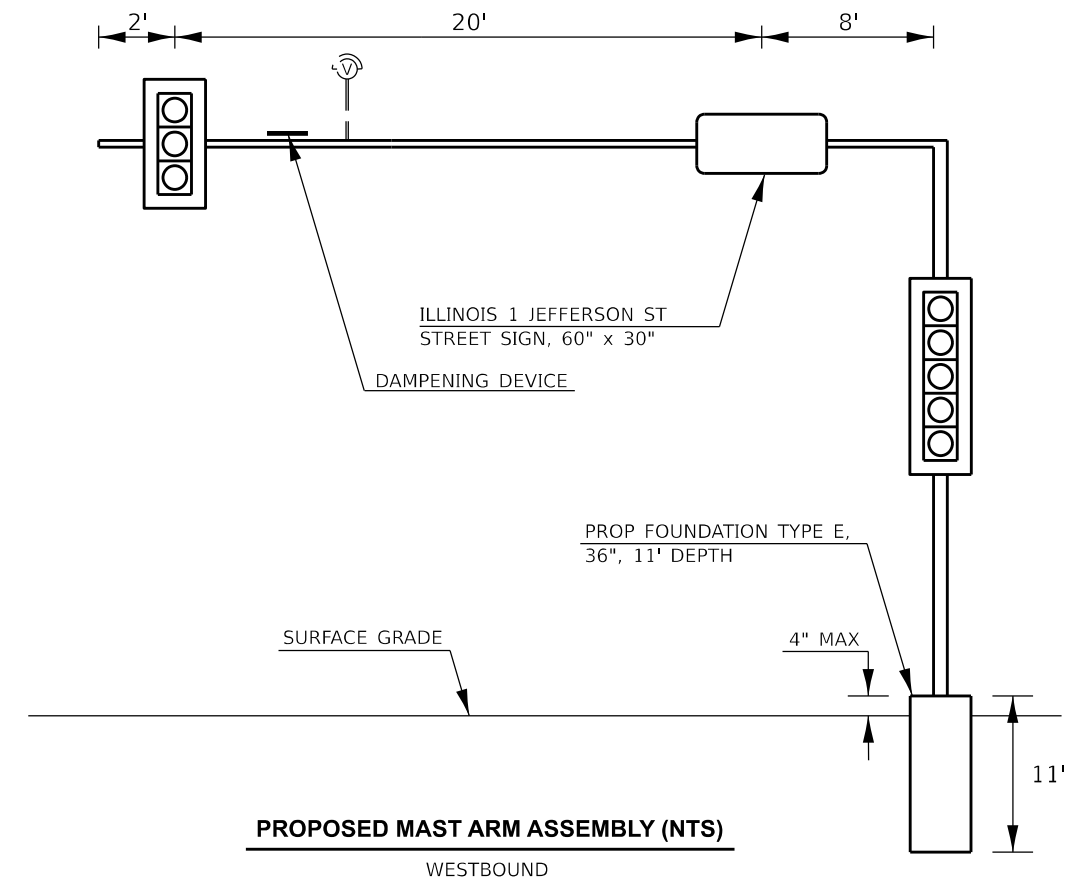
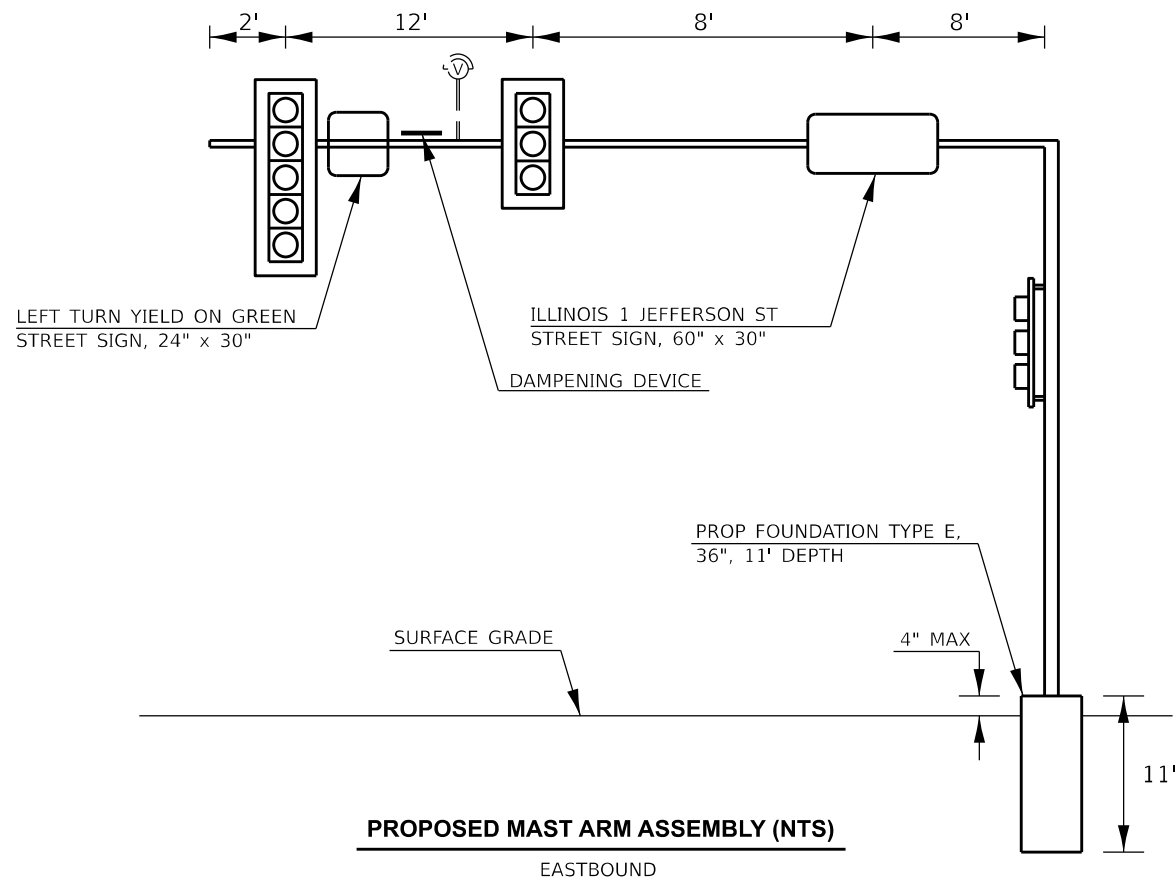
SIGN SCHEDULE

SCALE: SHEET 1 OF 1 SHEETS STA. TO STA.

USER NAME = Jon.Woodyer	DESIGNED -	REVISED -
PLOT SCALE = 40,000' / in.	DRAWN -	REVISED -
PLOT DATE = 1/18/2024	CHECKED -	REVISED -
	DATE -	REVISED -

F.A.P. RTE. 317	SECTION (20R)TS-1	COUNTY IROQUOIS	TOTAL SHEETS 12	SHEET NO. 10
CONTRACT NO. 66N97				
ILLINOIS FED. AID PROJECT				

MODEL: D:\in\h...
FILE NAME: p:\illinois\work\p\m\DOT\Documents\DOT Office\Drawings\CAD\Drawings\66N97\cover sheet.dwg



NOTE:
CAMERA LOCATION ON MAST ARMS TO BE DETERMINED BY EQUIPMENT MANUFACTURER.

MODEL: D:\in\h...
 FILE NAME: p:\illinois\dot\documents\DOT\Office\Illinois\3090\Project\66N97\CAD\Drawings\cover sheet.dwg

USER NAME = Jon.Woodyer	DESIGNED -	REVISED -
PLOT SCALE = 40,000' / 1 in.	DRAWN -	REVISED -
PLOT DATE = 1/18/2024	CHECKED -	REVISED -
	DATE -	REVISED -

**STATE OF ILLINOIS
DEPARTMENT OF TRANSPORTATION**

MAST ARM DETAILS

SCALE: SHEET 1 OF 1 SHEETS STA. TO STA.

F.A.P. RTE. 317	SECTION (20R)TS-1	COUNTY IROQUOIS	TOTAL SHEETS 12	SHEET NO. 11
CONTRACT NO. 66N97				
ILLINOIS FED. AID PROJECT				

