

STATE OF ILLINOIS
DEPARTMENT OF TRANSPORTATION

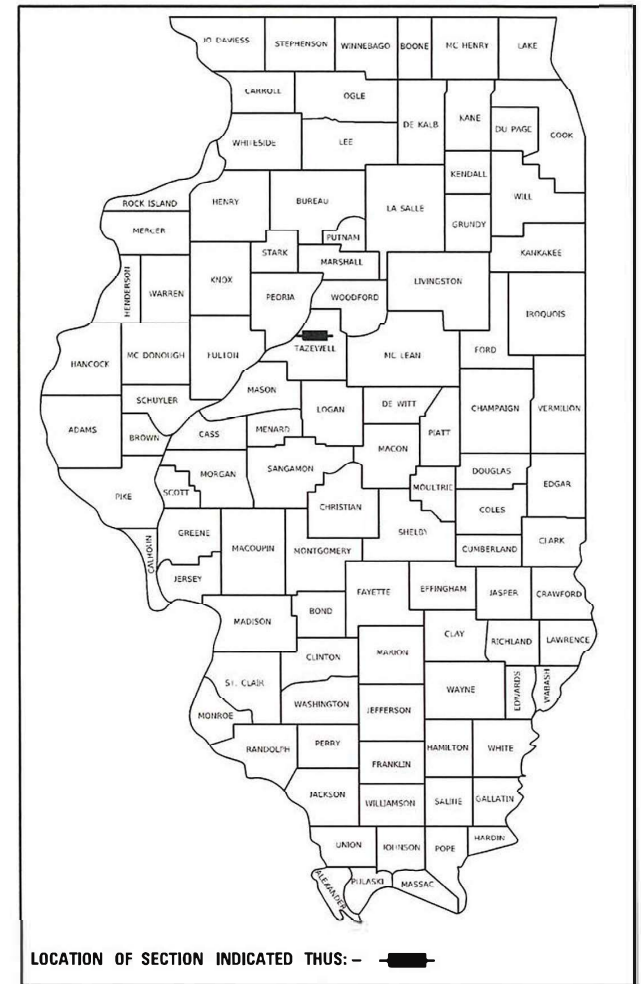
F.A.U. RTE.	SECTION	COUNTY	TOTAL SHEETS	SHEET NO.
6758	7(TS)	TAZEWELL	16	1
		ILLINOIS	CONTRACT NO. 68105	

D-94-024-24

INDEX OF SHEETS:
SEE SHEET 2 FOR INDEX OF SHEETS

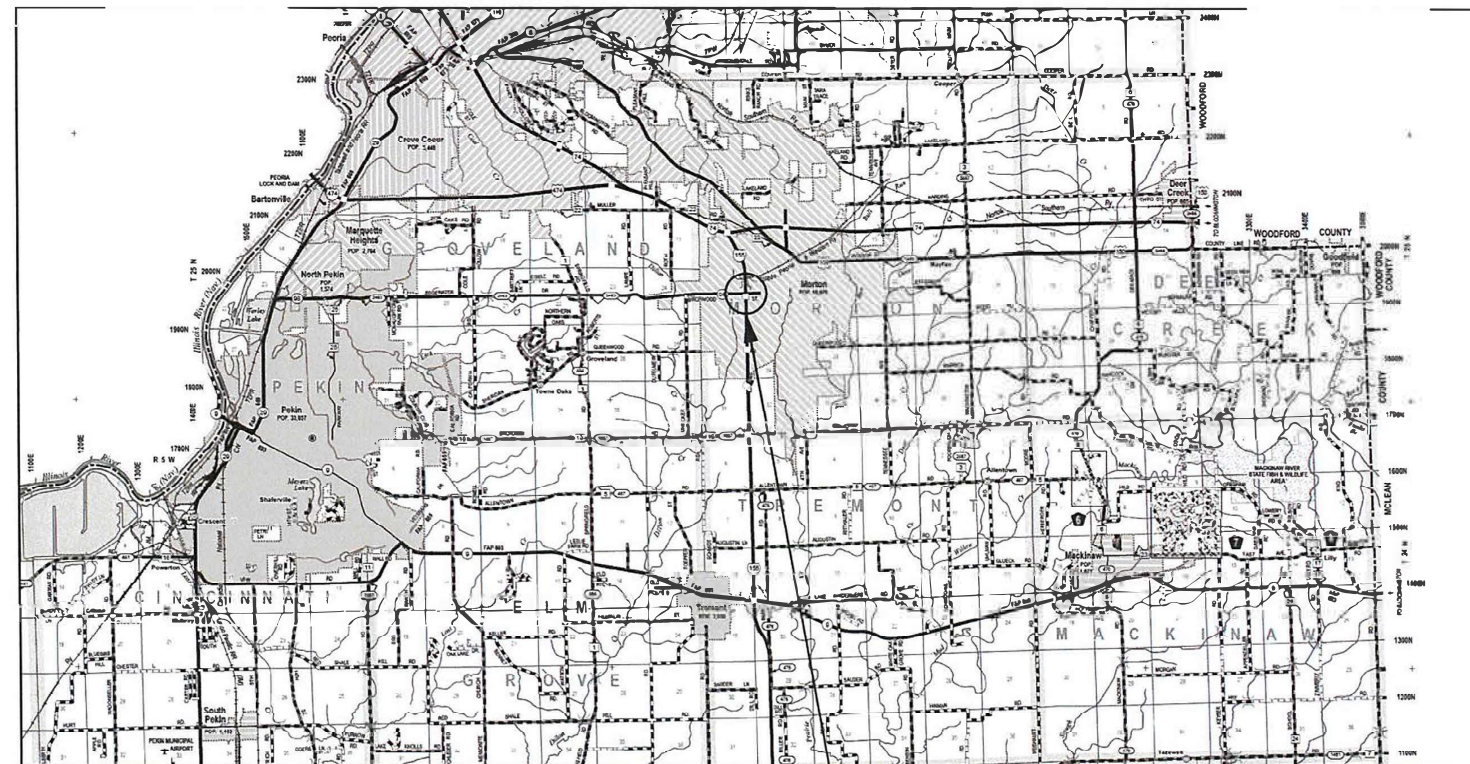
PROPOSED HIGHWAY PLANS

FAU 6758 (IL 98)
SECTION (7)TS
TAZEWELL COUNTY
PROJECT NO. STP-UY67(429)
C-94-024-24



HIGHWAY STANDARDS:
SEE SHEET 2 FOR A LIST OF
APPLICABLE HIGHWAY STANDARDS

PROJECT DESCRIPTION:
TRAFFIC SIGNAL MAST ARM REPLACEMENT
AT IL 98 (BIRCHWOOD ST.) & I-155 NB
RAMPS IN MORTON.



I-155 & IL 98 (BIRCHWOOD ST.) - MORTON

J.U.L.I.E.
JOINT UTILITY LOCATION INFORMATION FOR EXCAVATORS
1-800-892-0123
OR 811

PROJECT ENGINEER : TREVOR HANSON (309) 671-4474
PROJECT MANAGER : ERIC HOWALD (309) 671-4481
CATALOG NO. 036472-00D
CONTRACT NO. 68105

STATE OF ILLINOIS
DEPARTMENT OF TRANSPORTATION

SUBMITTED February 2, 2024
[Signature]
REGIONAL ENGINEER

March 22, 2024 [Signature]
ENGINEER OF DESIGN AND ENVIRONMENT

March 22, 2024 [Signature]
DIRECTOR OF HIGHWAYS PROJECT IMPLEMENTATION

PRINTED BY THE AUTHORITY
OF THE STATE OF ILLINOIS

NO COMMITMENTS HAVE BEEN MADE IN CONJUNCTION WITH THIS PROJECT.

INDEX OF SHEETS	
SHEET	DESCRIPTION
1	COVER SHEET
2	COMMITMENTS, INDEX OF SHEETS, HIGHWAY STANDARDS, & TRAFFIC SIGNAL CONSTRUCTION STAGING NOTES
3	STATUS OF UTILITIES
4	CONSTRUCTION NOTES
5 - 6	SUMMARY OF QUANTITIES
7 - 8	EXISTING TRAFFIC SIGNAL PLANS
9	EXISTING TRAFFIC SIGNAL PLANS & REMOVAL ITEMS
10	EXISTING CIRCUIT & PHASE DIAGRAMS
11	TRAFFIC SIGNAL SCHEDULES
12	PROPOSED TRAFFIC SIGNAL PLANS
13	PROPOSED CIRCUIT & PHASE DIAGRAMS
14	PROPOSED TRAFFIC SIGNAL CABLE PLAN
15	PROPOSED MAST ARM AND TRAFFIC SIGNAL POST DETAILS
16	PROPOSED SIGN PANEL DETAILS

HIGHWAY STANDARDS	
000001-08	STANDARD SYMBOLS, ABBREVIATIONS AND PATTERNS
001006	DECIMAL OF AN INCH & FOOT
701101-05	OFF-ROAD OPERATIONS, MULTILANE, 15' TO 24" FROM PAVEMENT EDGE
701106-02	OFF-ROAD OPERATIONS, MULTILANE, MORE THAN 15' AWAY
701456-05	PARTIAL EXIT RAMP CLOSURE FREEWAY / EXPRESSWAY
701601-09	URBAN LANE CLOSURE, MULTILANE, 1W OR 2W WITH NONTRAVERSABLE MEDIAN
701701-10	URBAN LANE CLOSURE, MULTILANE INTERSECTION
701901-09	TRAFFIC CONTROL DEVICES
720001-01	SIGN PANEL MOUNTING DETAILS
720016-04	MAST ARM MOUNTED STREET NAME SIGNS
821101-02	LUMINARE WIRING IN POLE
857001-01	STANDARD PHASE DESIGNATION DIAGRAMS AND PHASE SEQUENCES
873001-02	TRAFFIC SIGNAL GROUNDING & BONDING
877001-08	STEEL MAST ARM ASSEMBLY AND POLE 16' THROUGH 55'
877011-10	STEEL COMB. MAST ARM ASSEMBLY AND POLE 16' THROUGH 55'
878001-11	CONCRETE FOUNDATION DETAILS
880006-01	TRAFFIC SIGNAL MOUNTING DETAILS

TRAFFIC SIGNAL CONSTRUCTION STAGING NOTES	
1.	THE CONTRACTOR WILL BE ALLOWED TO PLACE THE INTERSECTION INTO ALL-RED FLASH MODE TO FACILITATE THE INSTALLATION OF THE PROPOSED TRAFFIC SIGNAL MAST ARMS, POSTS, SIGNAL HEADS, ELECTRICAL CABLE AND OTHER COMPONENTS.
2.	THE CONTRACTOR SHALL FURNISH AND INSTALL A MINIMUM OF TWO STOP SIGNS PER APPROACH WHEN THE INTERSECTION IS OPERATING IN ALL-RED FLASH MODE. THE TRAFFIC SIGNALS MAY BE PLACED INTO ALL-RED FLASH MODE BETWEEN THE HOURS OF 8:30AM AND 3:00PM ONLY.
3.	THE CONTRACTOR SHALL RESTORE THE TRAFFIC SIGNALS TO NORMAL OPERATION AT ALL OTHER TIMES, UNLESS SPECIFICALLY DIRECTED OTHERWISE BY THE ENGINEER.
4.	THE CONTRACTOR WILL BE ALLOWED TO PLACE THE INTERSECTION INTO FLASH FOR A MAXIMUM OF FIVE DAYS PER EACH LOCATION.
5.	THE CONTRACTOR WILL BE ALLOWED TO MAKE TEMPORARY SPLICES AS NEEDED TO FACILITATE THE INSTALLATION OF THE PROPOSED TRAFFIC SIGNAL EQUIPMENT.
6.	ALL COSTS (LABOR, MATERIALS, AND EQUIPMENT) ASSOCIATED WITH THESE REQUIREMENTS SHALL BE INCLUDED IN THE CONTRACT BID PRICE FOR THE PAY ITEM "TRAFFIC CONTROL AND PROTECTION, (SPECIAL)." THERE WILL BE NO ADDITIONAL COMPENSATION FOR ITEMS REQUIRED TO IMPLEMENT STAGING, INCLUDING, BUT NOT LIMITED TO, TEMPORARY CABLE SPLICES, TEMPORARY TRAFFIC POSTS, AND PREMIUM TIME HOURS.

MODEL PATH: S:\CEN\W\W000000\SP\AN\Hanson.# 68105 IL 08 Birchwood & L155 Ramp Hbrt ArmU. 08 & L155 Ramp. (02-01-24).dgn

USER NAME = Trevor.Hanson	DESIGNED -	REVISED -
	DRAWN -	REVISED -
PLOT SCALE = 23,8272 * / in.	CHECKED -	REVISED -
PLOT DATE = 2/1/2024	DATE -	REVISED -

**STATE OF ILLINOIS
DEPARTMENT OF TRANSPORTATION**

**COMMITMENTS, INDEX OF SHEETS, HIGHWAY STANDARDS, &
TRAFFIC SIGNAL CONSTRUCTION STAGING NOTES**

SCALE: SHEET OF SHEETS STA. TO STA.

F.A.P. RTE.	SECTION	COUNTY	TOTAL SHEETS	SHEET NO.
6758	7(TS)	TAZEWELL	16	2
			CONTRACT NO. 68105	
		ILLINOIS FED. AID PROJECT		

STATUS OF UTILITIES					
COMPANY	CONTACT	TYPE OF UTILITY	TYPE OF CONFLICT	LOCATION	DISPOSITION
STRATUS	TONY JORDAN 4700 N. PROSPECT RD. PEORIA HEIGHTS, IL 61616	COMMUNICATIONS	MAST ARM, TS POST	NE, NW QUADRANTS	CAUTION
13 BROADBAND	JOE MILLER 602 HIGH POINT LN. EAST PEORIA, IL 61611	COMMUNICATIONS	MAST ARM, TS POST	NE, NW QUADRANTS	CAUTION
FRONTIER COMMUNICATIONS	KALIN HINSHAW KALIN.HINSHAW@FTR.COM	COMMUNICATIONS	MAST ARM, TS POST	NE, NW QUADRANTS	CAUTION
COMCAST	THOMAS MUNAR THOMAS_MUNAR@COMCAST.COM	COMMUNICATIONS	MAST ARM, TS POST	SE, SW QUADRANTS	CAUTION
AMEREN	JON REICK 8420 N. UNIVERSITY ST. PEORIA, IL 61615	ELECTRIC	MAST ARM, TS POST	SE, SW QUADRANTS	CAUTION
UTILITY DEPTHS TO BE DETERMINED THROUGH UTILITY LOCATES AND POT HOLING					

MODEL: Default
 FILE NAME: S:\CEN\WV\ORD\DESIGN\Hanson, # 6805, IL_98, Birchwood & L155 Ramp Abstr. Arml. 98 & L155 Ramp, (02-01-24).dgn

USER NAME = Trevor.Hanson	DESIGNED -	REVISED -
	DRAWN -	REVISED -
PLOT SCALE = 23,8272 * / in.	CHECKED -	REVISED -
PLOT DATE = 2/1/2024	DATE -	REVISED -

STATE OF ILLINOIS
DEPARTMENT OF TRANSPORTATION

SCALE:		SHEET	OF	SHEETS	STA.	TO STA.

F.A.P. RTE.	SECTION	COUNTY	TOTAL SHEETS	SHEET NO.
6758	7(TS)	TAZEWELL	16	3
ILLINOIS FED. AID PROJECT			CONTRACT NO. 68105	

CONSTRUCTION NOTES

1.	THE LOCATION OF ALL UTILITIES AND PRIVATELY OWNED FACILITIES SHALL BE FIELD VERIFIED BY THE CONTRACTOR PRIOR TO THE INSTALLATION OF ANY COMPONENTS.
2.	THE CONTRACTOR SHALL BE RESPONSIBLE FOR LOCATING EXISTING IDOT ELECTRICAL FACILITIES AT HIS/HER OWN EXPENSE IF REQUIRED. THE CONTRACTOR SHALL ALSO BE LIABLE FOR ANY DAMAGE TO IDOT FACILITIES RESULTING FROM INACCURATE LOCATING.
3.	ELECTRICAL WORK SHALL CONFORM WITH NATIONAL, STATE, AND LOCAL CODES.
4.	THE LOCATIONS FOR CONCRETE FOUNDATIONS ARE PROVIDED FOR REFERENCE ONLY. THE ENGINEER OF TRAFFIC SHALL BE NOTIFIED FOR LOCATION VERIFICATION BEFORE INSTALLATION.
5.	ALL TRAFFIC SIGNAL SECTIONS SHALL HAVE 12" SINGLE LED LENSES.
6.	THE RED SECTIONS OF THE SIGNAL HEADS SHARING THE SAME MAST ARM SHALL BE LEVEL WITH ONE ANOTHER AND MAINTAIN A 16 FT. MINIMUM CLEARANCE FROM THE HIGHEST POINT OF THE ROADWAY TO BOTTOM OF THE SIGNAL BACKPLATE.
7.	ALL TRAFFIC SIGNAL HEAD BRACKETS ARE TO BE GALVANIZED STEEL WITH A NATURAL FINISH.
8.	ALL TRAFFIC SIGNAL STRUCTURES SHALL BE BONDED IN ACCORDANCE WITH NEC REQUIREMENTS. THIS WORK SHALL BE PAID FOR AT THE CONTRACT UNIT PRICE FOR "ELECTRIC CABLE IN CONDUIT, EQUIPMENT GROUNDING CONDUCTOR, NO. 6 1C" AND SHALL INCLUDE ALL LABOR, EQUIPMENT, AND MATERIALS (INCLUDING CLAMPS, HARDWARE, ELECTRICAL CABLE, AND ALL OTHER ITEMS REQUIRED TO BOND THE STRUCTURES).
9.	SDR 13.5 HDPE COILABLE DUCT MAY BE USED IN PLACE OF SCHEDULE 40 PVC CONDUIT.
10.	THE CONTRACTOR SHALL PROVIDE ELECTRICAL CABLE SLACK IN ACCORDANCE WITH ARTICLE 873.03.
11.	ELECTRICAL CABLE WILL BE MEASURED FOR PAYMENT IN ACCORDANCE WITH ARTICLE 873.04.
12.	THE CONTRACTOR SHALL VERIFY FIELD CONDITIONS PRIOR TO BIDDING. THERE WILL BE NO ADDITIONAL COMPENSATION PAID FOR CLAIMS THAT ARISE FROM A FAILURE TO FULLY INVESTIGATE EXISTING FIELD CONDITIONS.
13.	THE EXISTING TRAFFIC SIGNALS SHALL REMAIN IN OPERATION DURING THE CONSTRUCTION OF THE PROPOSED TRAFFIC SIGNALS.
14.	ANY MAINTENANCE OF EXISTING TRAFFIC SIGNALS WILL BE CONSIDERED EXTRA WORK IN ACCORDANCE WITH ARTICLE 109.04 OF THE STANDARD SPECIFICATIONS.
15.	THE HANDHOLES SHALL BE CONSTRUCTED SO THAT THE TOP OF THE FRAME WILL BE FLUSH WITH THE SURFACE OF THE SHOULDER OR GROUND LINE.
16.	ALL SURPLUS MATERIALS SHALL BE DISPOSED OF IN ACCORDANCE WITH ARTICLE 202.03 OF THE STANDARD SPECIFICATIONS.
17.	COILABLE POLYETHYLENE DUCT MAY BE SUBSTITUTED FOR PVC PUSHED OR TRENCHED.
18.	NO ADDITIONAL COMPENSATION WILL BE ALLOWED FOR PLACING CONDUIT AT GREATER THAN 2 FT. MINIMUM DEPTH TO AVOID OBSTACLES SUCH AS UNDERGROUND UTILITIES.
19.	THE CONTRACTOR IS RESPONSIBLE FOR THE COST OF UNCOVERING OR HAND DIGGING AROUND UTILITIES AS NECESSARY. THIS COST OF THIS WORK SHALL BE INCLUDED IN THE UNIT PRICES FOR THE CONDUITS.
20.	THE CONTRACTOR SHALL FURNISH AND INSTALL GROUT AROUND ALL DRILLED CONDUITS LOCATED INSIDE OF HANDHOLES TO PREVENT WATER AND DIRT INTRUSION INTO THE HANDHOLE. THE COST OF THIS WORK SHALL BE INCLUDED IN THE COST OF "DRILL EXISTING HANDHOLE."
21.	WITHIN THIRTY CALENDAR DAYS AFTER CONTRACT EXECUTION, THE CONTRACTOR SHALL SUBMIT J.U.L.I.E. TICKETS TO HAVE THE UNDERGROUND UTILITIES MARKED AT THE INTERSECTION AND THEN SCHEDULE AN ON-SITE MEETING WITH THE RESIDENT ENGINEER AND IDOT D4 TRAFFIC OPERATIONS TO DETERMINE AND MARK THE EXACT PLACEMENT OF THE PROPOSED TRAFFIC SIGNAL COMPONENTS.
22.	THE CONTRACTOR SHALL FURNISH AND INSTALL A 20A 1-POLE CIRCUIT BREAKER, TERMINAL BLOCKS, WIRING, BUTTON PHOTOCELL (INSTALLED IN CABINET OVERHANG), AND ALL OTHER ITEMS REQUIRED TO PROVIDE PHOTOCELL CONTROL INSIDE THE EXISTING TRAFFIC SIGNAL CONTROLLER CABINET FOR THE PROPOSED LED ROADWAY LUMINAIRE AT THIS LOCATION. THE LUMINAIRE SHALL BE WIRED FOR 120V OPERATION. THE CONTRACTOR SHALL RE-ARRANGE THE EXISTING CABINET COMPONENTS AS NEEDED TO ACCOMODATE THE INSTALLATION OF THE PROPOSED LIGHTING COMPONENTS. THE PROPOSED LIGHTING COMPONENTS SHALL NOT INTERFERE WITH CABINET OPERATION AND MAINTENANCE. THE CONTRACTOR SHALL LABEL ALL POWER WIRING AND LUMINAIRE FIELD WIRING WITH PERMANENT LABELS. THE CONTRACTOR SHALL SUBMIT CATALOG CUTS FOR ALL COMPONENTS TO THE DEPARTMENT FOR REVIEW AND APPROVAL PRIOR TO ORDERING MATERIALS. THIS WORK WILL NOT BE PAID FOR SEPARATELY, BUT SHALL BE INCLUDED IN THE COST OF THE PROPOSED LED LUMINAIRE.
23.	THE CONTRACTOR SHALL FURNISH AND INSTALL ONE 50A CIRCUIT BREAKER, 1-POLE IN THE EXISTING LIGHTING CONTROLLER. THE CONTRACTOR SHALL RE-ARRANGE THE EXISTING CABINET COMPONENTS AS NEEDED TO ACCOMODATE THE INSTALLATION OF THE PROPOSED CIRCUIT BREAKER. THE PROPOSED SERVICE WIRES SHALL BE TERMINATED ON THE PROPOSED 50A CIRCUIT BREAKER TO PROVIDE POWER TO THE EXISTING TRAFFIC SIGNAL CABINET. THE COST OF THIS WORK WILL NOT BE PAID FOR SEPARATELY, BUT SHALL BE INCLUDED IN THE COST OF THE PROPOSED 50A CIRCUIT BREAKER, 1-POLE.

MODEL Path: \\S:\CEN\W\W\ORD\DESIGN\AN\Hanson.# 68105 IL 08 Birchwood & L155 Ramp Hbrt Armil.08 & L155 Ramp. (02-01-24).dgn
 FILE NAME: S:\CEN\W\W\ORD\DESIGN\AN\Hanson.# 68105 IL 08 Birchwood & L155 Ramp Hbrt Armil.08 & L155 Ramp. (02-01-24).dgn

USER NAME = Trevor.Hanson	DESIGNED -	REVISED -
PLOT SCALE = 23,8272 */ in.	DRAWN -	REVISED -
PLOT DATE = 2/1/2024	CHECKED -	REVISED -
	DATE -	REVISED -

**STATE OF ILLINOIS
DEPARTMENT OF TRANSPORTATION**

CONSTRUCTION NOTES

SCALE: SHEET OF SHEETS STA. TO STA.

F.A.P. RTE.	SECTION	COUNTY	TOTAL SHEETS	SHEET NO.
6758	7(TS)	TAZEWELL	16	4
			CONTRACT NO. 68105	
		ILLINOIS	FED. AID PROJECT	

SUMMARY OF QUANTITIES

CODE 0021
 80% FEDERAL
 20% STATE
 0% CITY
 MORTON

URBAN

ITEM NUMBER	ITEM DESCRIPTION	UNIT	TOTAL QTY.	
67100100	MOBILIZATION	L SUM	1.0	1.0
* 72000100	SIGN PANEL - TYPE 1	SQ FT	11.5	11.5
* 72000200	SIGN PANEL - TYPE 2	SQ FT	40.0	40.0
81028340	UNDERGROUND CONDUIT, PVC, 1 1/2" DIA.	FOOT	290.0	290.0
81028350	UNDERGROUND CONDUIT, PVC, 2" DIA.	FOOT	142.0	142.0
81028370	UNDERGROUND CONDUIT, PVC, 3" DIA.	FOOT	190.0	190.0
81702110	ELECTRIC CABLE IN CONDUIT, 600V (XLP-TYPE USE) 1/C NO. 10	FOOT	257.0	257.0
81702130	ELECTRIC CABLE IN CONDUIT, 600V (XLP-TYPE USE) 1/C NO. 6	FOOT	604.0	604.0
82110007	LUMINAIRE, LED, ROADWAY, OUTPUT DESIGNATION G	EACH	1.0	1.0
87301245	ELECTRIC CABLE IN CONDUIT, SIGNAL NO. 14 5C	FOOT	617.5	617.5
87301255	ELECTRIC CABLE IN CONDUIT, SIGNAL NO. 14 7C	FOOT	409.0	409.0
87301900	ELECTRIC CABLE IN CONDUIT, EQUIPMENT GROUNDING CONDUCTOR, NO. 6 1C	FOOT	727.5	727.5
87502480	TRAFFIC SIGNAL POST, GALVANIZED STEEL 14 FT.	EACH	2.0	2.0
87700220	STEEL MAST ARM ASSEMBLY AND POLE, 36 FT.	EACH	1.0	1.0
87702980	STEEL COMBINATION MAST ARM ASSEMBLY AND POLE 50 FT.	EACH	1.0	1.0
87800100	CONCRETE FOUNDATION, TYPE A	FOOT	6.0	6.0
87800415	CONCRETE FOUNDATION, TYPE E 36-INCH DIAMETER	FOOT	26.0	26.0
87900100	DRILL EXISTING FOUNDATION	EACH	2.0	2.0
87900200	DRILL EXISTING HANDHOLE	EACH	5.0	5.0
88040070	SIGNAL HEAD, POLYCARBONATE, LED, 1-FACE, 3-SECTION, BRACKET MOUNTED	EACH	2.0	2.0

*= SPECIALTY ITEM

MODEL Path: \\S:\CEN\W\W\ORD\DESIGN\AN\Hanson, # 68105 IL 08 Birchwood & L155 Ramp Abstr. Amvil 08 & L155 Ramp (02-01-24).dgn

USER NAME = Trevor.Hanson	DESIGNED -	REVISED -
PLOT SCALE = 23,8272 * / in.	DRAWN -	REVISED -
PLOT DATE = 2/1/2024	CHECKED -	REVISED -
	DATE -	REVISED -

STATE OF ILLINOIS
 DEPARTMENT OF TRANSPORTATION

SUMMARY OF QUANTITIES

SCALE: SHEET OF SHEETS STA. TO STA.

F.A.P. RTE.	SECTION	COUNTY	TOTAL SHEETS	SHEET NO.
6758	7(TS)	TAZEWELL	16	5
			CONTRACT NO. 68105	
ILLINOIS FED. AID PROJECT				

SUMMARY OF QUANTITIES - CONTINUED

ITEM NUMBER	ITEM DESCRIPTION	UNIT	TOTAL QTY.	CODE 0021
				80% FEDERAL
				20% STATE
				0% CITY
URBAN			MORTON	
88040090	SIGNAL HEAD, POLYCARBONATE, LED, 1-FACE, 3-SECTION, MAST ARM MOUNTED	EACH	4.0	4.0
88040110	SIGNAL HEAD, POLYCARBONATE, LED, 1-FACE, 4-SECTION, BRACKET MOUNTED	EACH	1.0	1.0
88040120	SIGNAL HEAD, POLYCARBONATE, LED, 1-FACE, 4-SECTION, MAST ARM MOUNTED	EACH	1.0	1.0
88200510	TRAFFIC SIGNAL BACKPLATE, RETROREFLECTIVE	EACH	8.0	8.0
89502385	REMOVE EXISTING CONCRETE FOUNDATION	EACH	3.0	3.0
89502375	REMOVE EXISTING TRAFFIC SIGNAL EQUIPMENT	EACH	1.0	1.0
X0320023	CLOSED CIRCUIT TELEVISION DOME CAMERA, HD	EACH	1.0	1.0
X8891011	VIDEO VEHICLE DETECTION SYSTEM, 3 CAMERAS	EACH	1.0	1.0
X0326812	CAT 5 ETHERNET CABLE	FOOT	171.5	171.5
X4402815	ISLAND PAVEMENT REMOVAL AND REPLACEMENT	SQ FT	120.0	120.0
X7010216	TRAFFIC CONTROL AND PROTECTION, (SPECIAL)	L SUM	1.0	1.0
X8140234	REPLACE HANDHOLE COVER	EACH	4.0	4.0
XP000132	50A CIRCUIT BREAKER, 1P	EACH	1.0	1.0

MODEL Path: S:\CEN\WV\ORD\ESP\AV\Hanson.#.Completed.Contract13404.Letins_68105 IL 98 Birchwood & L155 Ramp Mast Arm II_98 & L155 Ramps (02-07-24).dgn

USER NAME = Trevor.Hanson	DESIGNED -	REVISED 02-07-24 TJH
	DRAWN -	REVISED -
PLOT SCALE = 23,8272 * / in.	CHECKED -	REVISED -
PLOT DATE = 2/7/2024	DATE -	REVISED -

**STATE OF ILLINOIS
DEPARTMENT OF TRANSPORTATION**

SUMMARY OF QUANTITIES - CONTINUED

SCALE: SHEET OF SHEETS STA. TO STA.

F.A.P. RTE.	SECTION	COUNTY	TOTAL SHEETS	SHEET NO.
6758	7(TS)	TAZEWELL	16	6
ILLINOIS FED. AID PROJECT			CONTRACT NO. 68105	

ROUTE NO.	SEC.	COUNTY	TOTAL SHEETS	SHEET NO.
FA 40230406 X	TAZ.	189	53	

CONSTRUCTION NOTES

ALL DETECTOR LOOPS SHALL BE LOCATED IN THE CENTER OF THEIR RESPECTIVE LANES. THE BUREAU OF TRAFFIC SHALL BE NOTIFIED TO VERIFY PROPOSED LOOP LOCATIONS BEFORE THEY ARE CUT.

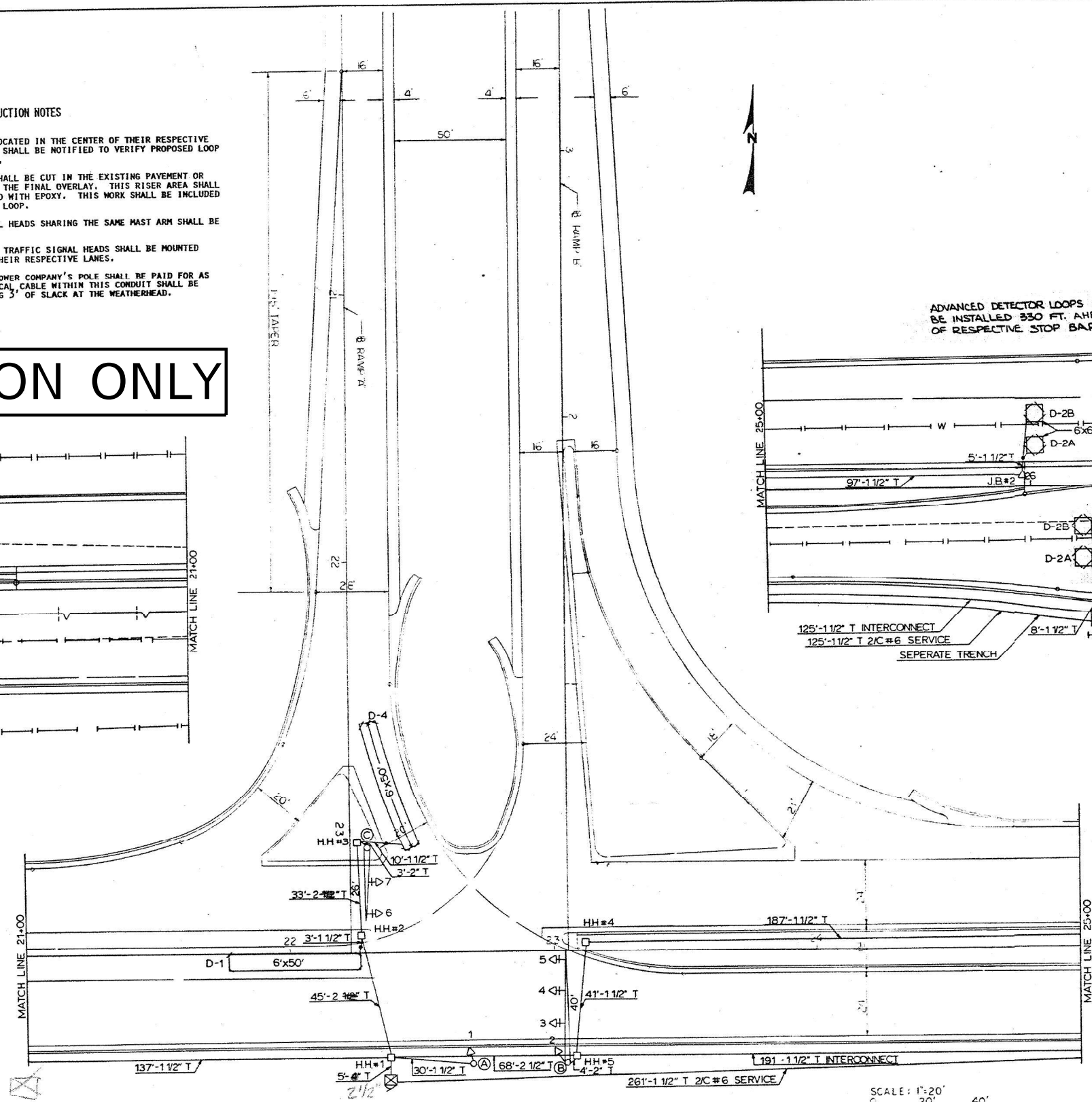
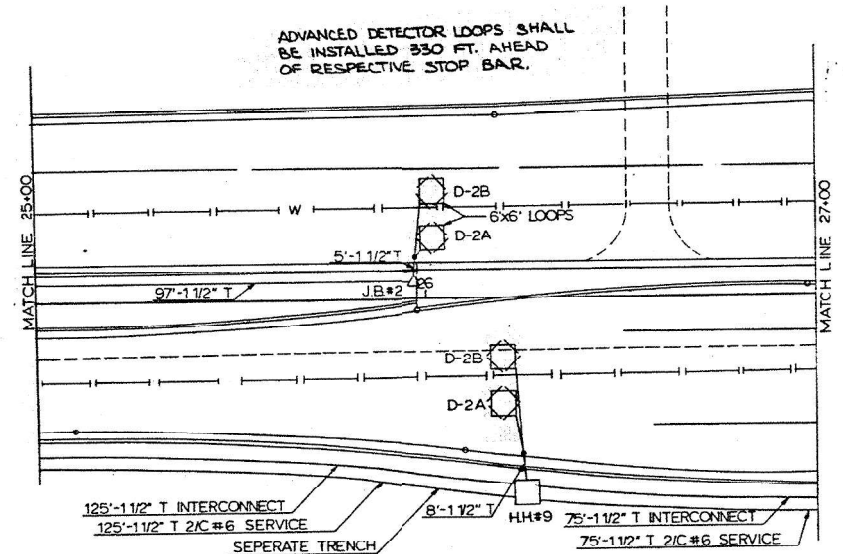
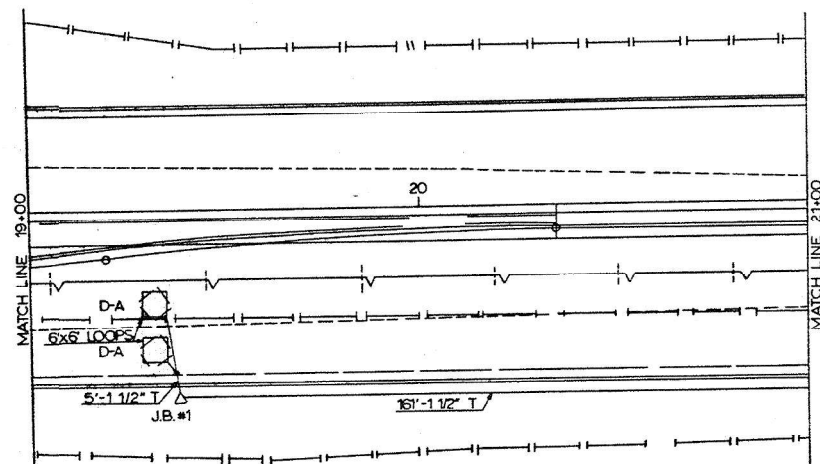
THE PROPOSED DETECTOR LOOPS SHALL BE CUT IN THE EXISTING PAVEMENT OR PROPOSED BINDER COURSE BEFORE THE FINAL OVERLAY. THIS RISER AREA SHALL THEN BE CHIPPED OUT AND FILLED WITH EPOXY. THIS WORK SHALL BE INCLUDED IN THE BID PRICE FOR DETECTOR LOOP.

THE RED SECTIONS OF THE SIGNAL HEADS SHARING THE SAME MAST ARM SHALL BE LEVEL WITH ONE ANOTHER.

THE PROPOSED MAST ARM MOUNTED TRAFFIC SIGNAL HEADS SHALL BE MOUNTED DIRECTLY OVER THE CENTER OF THEIR RESPECTIVE LANES.

THE CONDUIT ATTACHED TO THE POWER COMPANY'S POLE SHALL BE PAID FOR AS CONDUIT IN TRENCH. THE VERTICAL CABLE WITHIN THIS CONDUIT SHALL BE MEASURED FOR PAYMENT INCLUDING 3' OF SLACK AT THE WEATHERHEAD.

FOR INFORMATION ONLY



- LEGEND**
- ◀ SIGNAL HEAD WITH BACKPLATE
 - ◻ HANDHOLE
 - ◻ QUADRAPOLÉ DETECTOR LOOP
 - RISER, DETECTOR LEAD-IN
 - ◻ CONTROLLER CABINET
 - ◀ MAST ARM AND POLE
 - PROPOSED CONDUIT TRENCH
 - ◀ SIGNAL HEAD
 - ◻ DETECTOR LOOP
 - △ JUNCTION BOX
 - ◻ 6x6' LOOPS

TERMINAL DETAILS
RAMP 'A' & RAMP 'B'

PROPOSED
TRAFFIC SIGNALS
ILL. 98 -
RAMP 'A' & RAMP 'B'

SCALE: 1"=20'
0 20' 40'

NOT TO SCALE

MODEL: D:\p1\... FILE NAME: S:\CEN\W\W\ORD\ESP\AVI\hanson.dwg 6805 IL 98 Birchwood & L155 Ramp Abstr. Amvil. 98 & L155 Ramps. (02-01-24).dgn

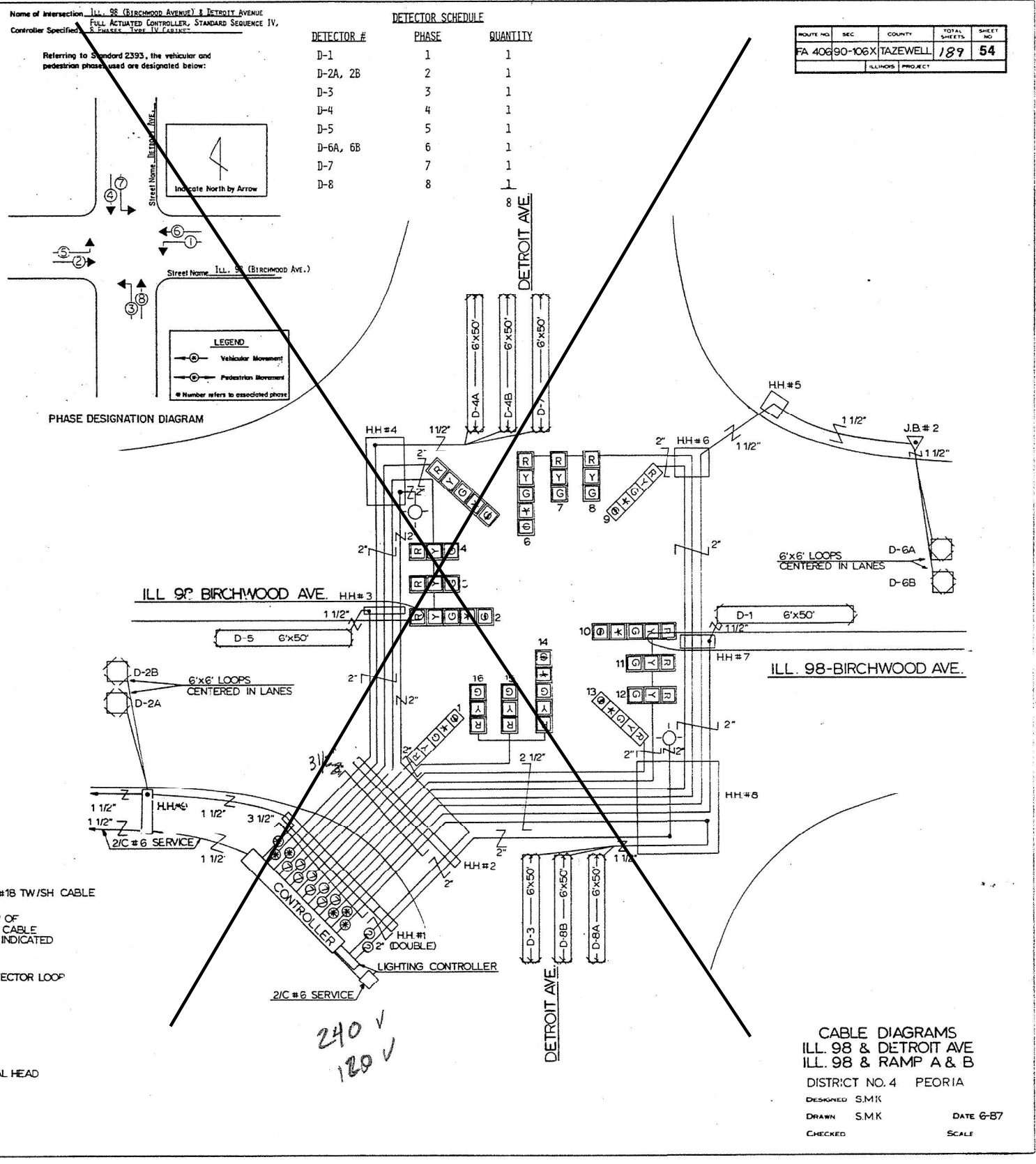
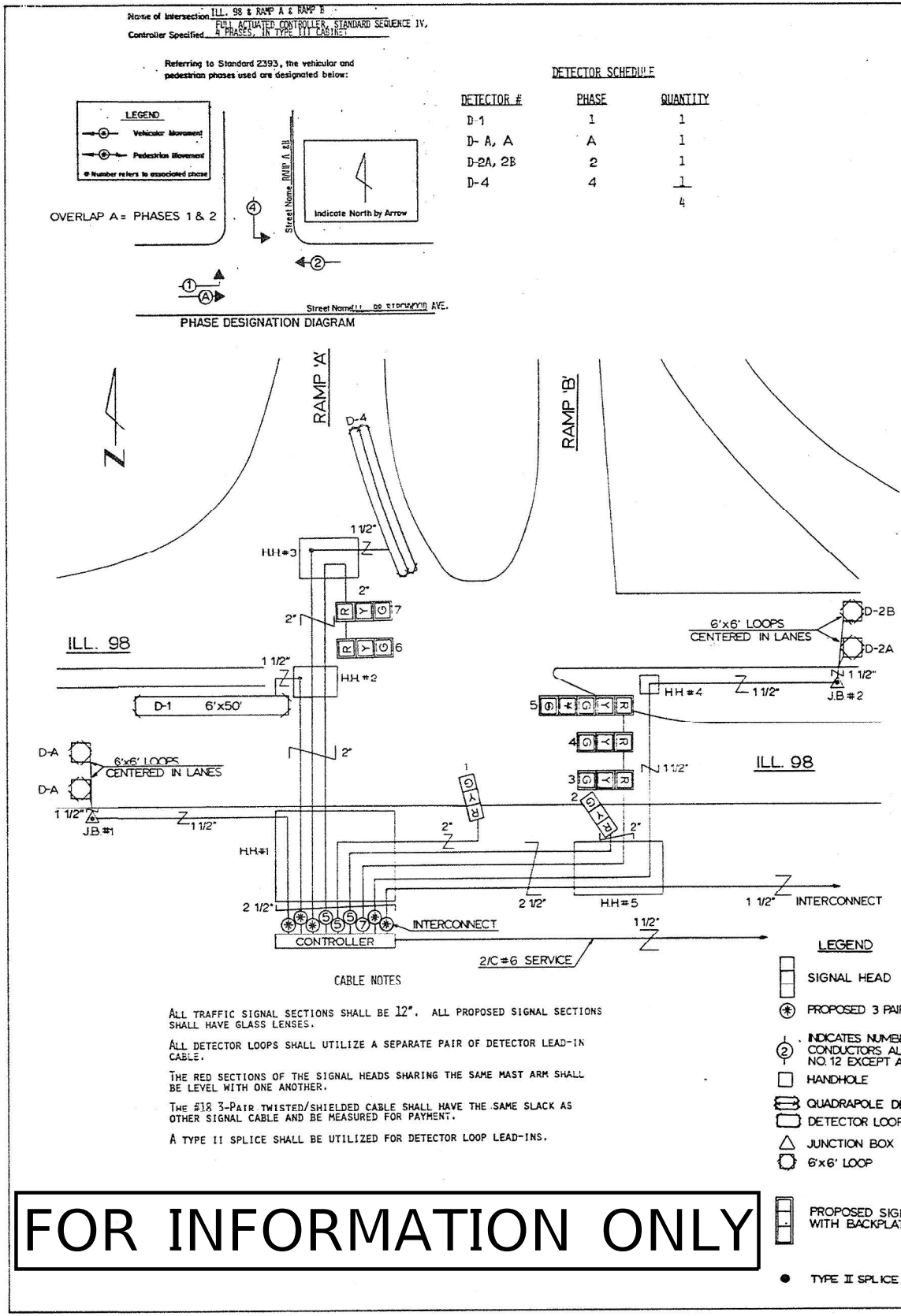
USER NAME = Trevor.Hanson	DESIGNED -	REVISED -
	DRAWN -	REVISED -
PLOT SCALE = 23,8272 */ in.	CHECKED -	REVISED -
PLOT DATE = 2/1/2024	DATE -	REVISED -

STATE OF ILLINOIS
DEPARTMENT OF TRANSPORTATION

EXISTING TRAFFIC SIGNAL PLANS

SCALE: SHEET OF SHEETS STA. TO STA.

F.A.P. RTE.	SECTION	COUNTY	TOTAL SHEETS	SHEET NO.
6758	7(TS)	TAZEWELL	16	7
CONTRACT NO. 68105			ILLINOIS FED. AID PROJECT	



ROUTE NO.	SEC.	COUNTY	TOTAL SHEETS	SHEET NO.
FA 406	90-106X	TAZEWELL	189	54

MODEL: P:\dtd\h\...
 FILE NAME: S:\CEN\W\W\ORD\ESP\AN\barson\# 68105 IL 98 Birchwood & L155 Ramp Inter Arml. 98 & L155 Ramps (02-01-24).dgn

USER NAME	DESIGNED	REVISED
= Trevor.Hanson	-	-
DRAWN	-	-
CHECKED	-	-
DATE	-	-

STATE OF ILLINOIS
 DEPARTMENT OF TRANSPORTATION

EXISTING TRAFFIC SIGNAL PLANS - CONTINUED

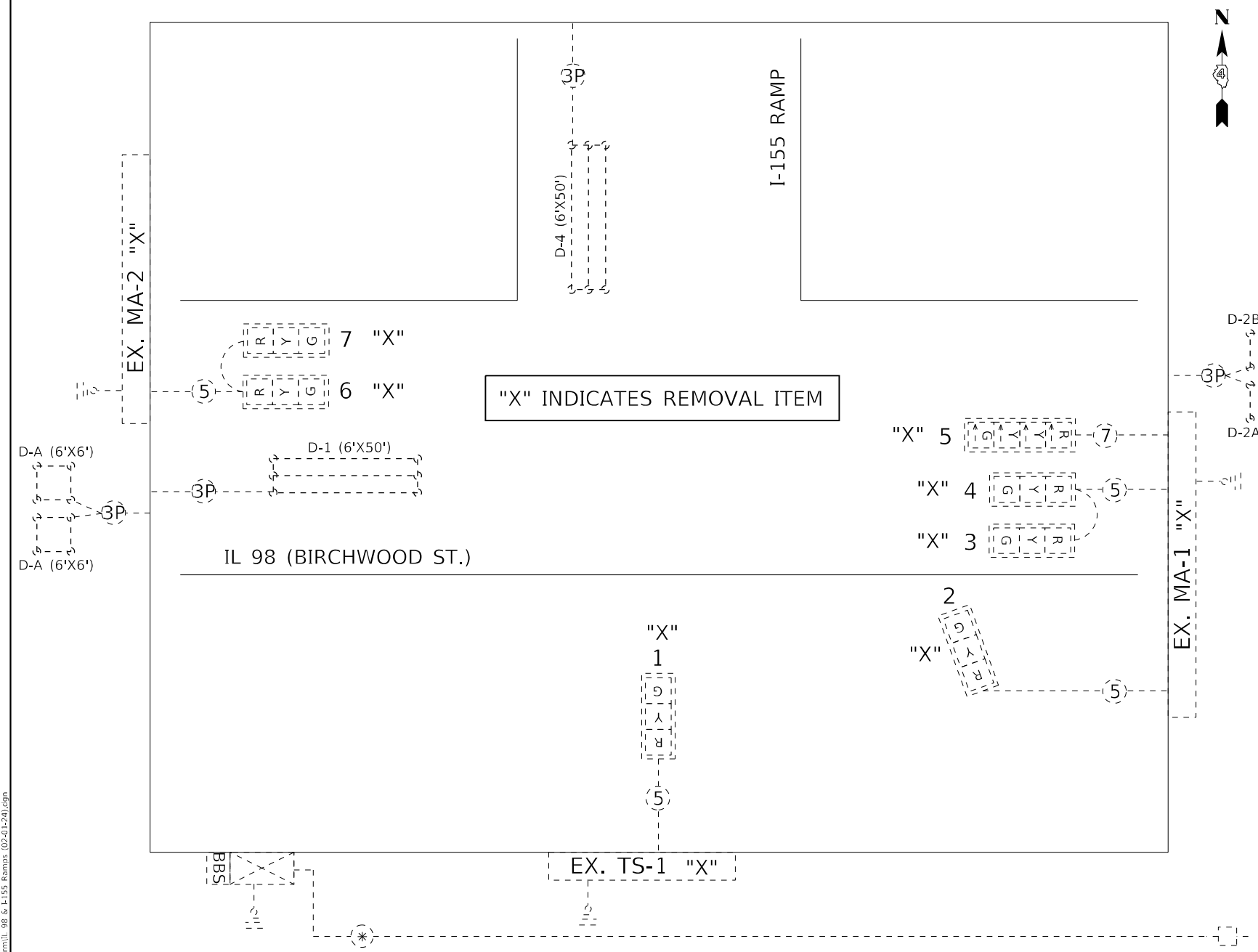
SCALE: SHEET OF SHEETS STA. TO STA.

F.A.P. RTE.	SECTION	COUNTY	TOTAL SHEETS	SHEET NO.
6758	7(TS)	TAZEWELL	16	8

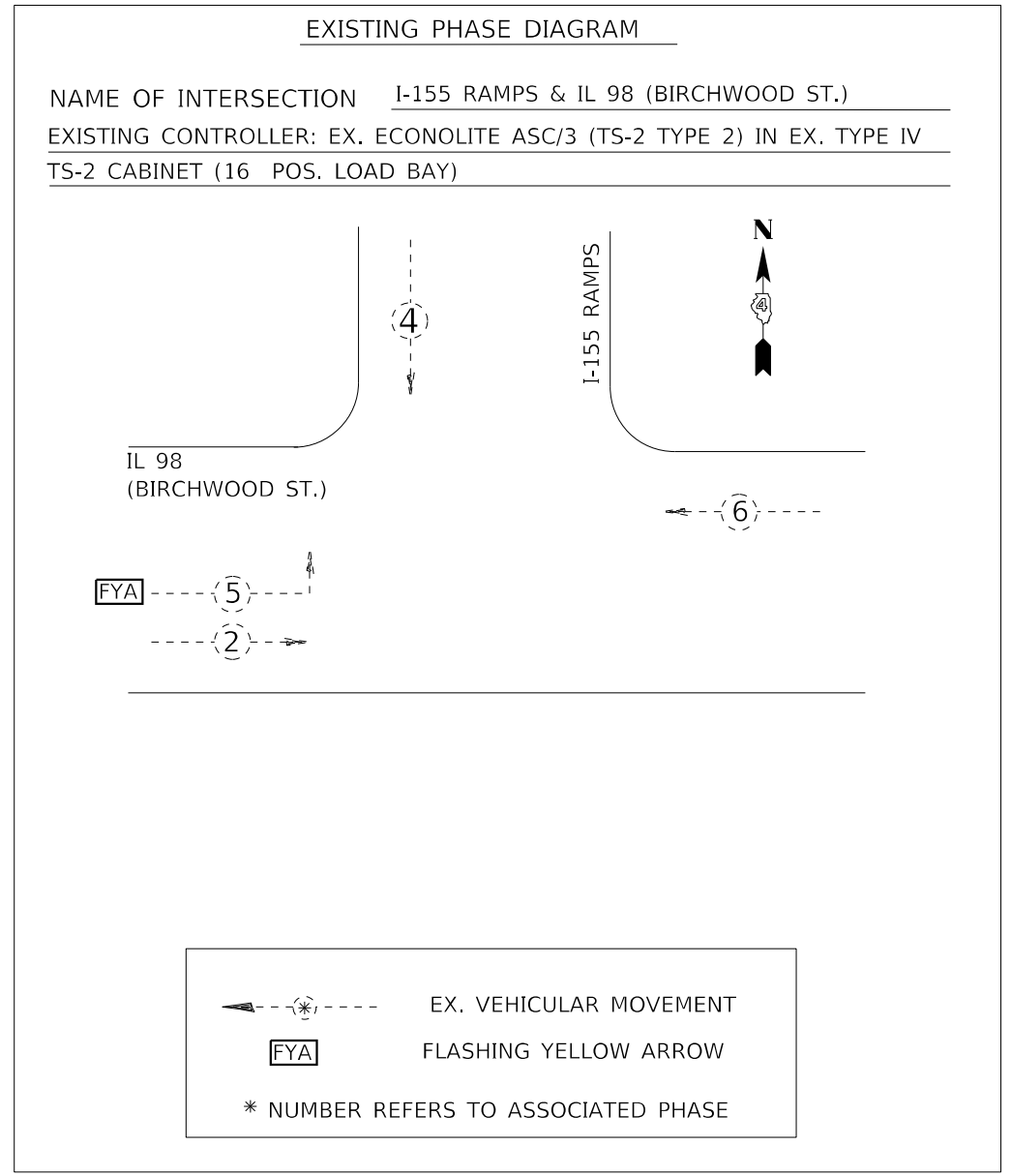
CONTRACT NO. 68105
 ILLINOIS FED. AID PROJECT

NOT TO SCALE

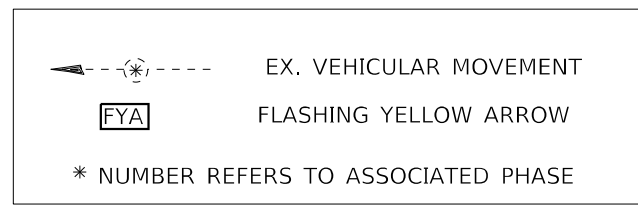
MODEL: Default
 FILE NAME: S:\CEN\WV\ORD\ESP\AVI\hanson# 68105 IL 98 Birchwood & I-155 Ramp Abstr. Amul. 98 & I-155 Ramps (02-01-24).cdp



"X" INDICATES REMOVAL ITEM



NAME OF INTERSECTION I-155 RAMPS & IL 98 (BIRCHWOOD ST.)
 EXISTING CONTROLLER: EX. ECONOLITE ASC/3 (TS-2 TYPE 2) IN EX. TYPE IV
 TS-2 CABINET (16 POS. LOAD BAY)



TRAFFIC SIGNALS LEGEND

	EX. TRAFFIC SIGNAL CONTROLLER CABINET		EX. 3 SEC. SIGNAL HEAD WITH BACKPLATE		EX. 3/4 NO. 14 SIGNAL CABLE
	EX. BATTERY BACKUP SYSTEM		EX. 3 SEC. SIGNAL HEAD WITHOUT BACKPLATE		EX. 5/8 NO. 14 SIGNAL CABLE
	EX. ELECTRIC SERVICE		EX. QUADRAPOLE DETECTOR LOOP		EX. 7/8 NO. 14 SIGNAL CABLE
	EX. GROUND/SAFETY BOND		EX. DETECTOR LOOP		EX. 1/2 NO. 6 CABLE

NOTES:
 1. THE EXISTING DETECTOR LOOPS ARE TO BE ABANDONED.
 2. THE EXISTING TRAFFIC SIGNAL CABINET IS CONNECTED TO THE ELECTRIC SERVICE AT BIRCHWOOD & DETROIT SIGNAL CABINET. THE EXISTING SERVICE WIRES FROM BIRCHWOOD & DETROIT TO I-155 & BIRCHWOOD SHALL BE REMOVED AND DISPOSED OF OFF OF RIGHT-OF-WAY. THE COST OF THIS WORK SHALL BE INCLUDED IN THE BID PRICE FOR "REMOVE EXISTING TRAFFIC SIGNAL EQUIPMENT."

NOT TO SCALE

USER NAME = Trevor.Hanson DESIGNED - DRAWN - PLOT SCALE = 23,8272 * / in. PLOT DATE = 2/1/2024	DESIGNED - DRAWN - CHECKED - DATE -	REVISED - REVISED - REVISED - REVISED -	STATE OF ILLINOIS DEPARTMENT OF TRANSPORTATION	EXISTING CIRCUIT AND PHASE DIAGRAMS SCALE: SHEET OF SHEETS STA. TO STA.	F.A.P. RTE. SECTION COUNTY TOTAL SHEETS SHEET NO. 6758 7(TS) TAZEWELL 16 10 CONTRACT NO. 68105 ILLINOIS FED. AID PROJECT
--	--	--	---	---	---

HANDHOLE SCHEDULE			
I-155 & IL 98 (BIRCHWOOD ST.)			
NAME	TYPE	LOCATION	DESCRIPTION
DHH-1	DOUBLE	SOUTH OF INTERSECTION	DRILL EX. HANDHOLE (QTY. 2) REPLACE HH COVER (QTY. 2)
HH-1	SINGLE	SOUTH OF INTERSECTION	DRILL EX. HANDHOLE (QTY. 2) REPLACE HH COVER (QTY. 1)
HH-2	SINGLE	NW CORNER ISLAND	DRILL EX. HANDHOLE (QTY. 1) REPLACE HH COVER (QTY. 1)
HH-3	SINGLE	CENTER MEDIAN EAST OF INTERSECTION	ABANDON IN PLACE
HH-4	SINGLE	CENTER MEDIAN WEST OF INTERSECTION	ABANDON IN PLACE

MAST ARM AND TRAFFIC SIGNAL POST SCHEDULE						
I-155 & IL 98 (BIRCHWOOD ST.)						
NAME	DESCRIPTION	LENGTH (FT.)	PROPOSED FOUNDATION			LOCATION
			DIAMETER	TYPE	DEPTH	
MA-1	STL COMB MAA&P	50.0	36 INCH	TYPE E	15.0 FT	SOUTH OF INTERSECTION
MA-2	S MAA & P	36.0	36 INCH	TYPE E	11.0 FT	NW CORNER ISLAND
TS-1	TS POST GALVS	14.0	24 INCH	TYPE A	3.0 FT.	SOUTH OF INTERSECTION
TS-2	TS POST GALVS	14.0	24 INCH	TYPE A	3.0 FT.	NE CORNER ISLAND

TRAFFIC SIGNAL HEAD SCHEDULE			
I-155 & IL 98 (BIRCHWOOD ST.)			
PROP. QTY.	UNIT	ITEM	LOCATION
2.0	EACH	SH P LED 1F 3S BM	1,2
4.0	EACH	SH P LED 1F 3S MAM	3,4,7,8
1.0	EACH	SH P LED 1F 4S BM	6
1.0	EACH	SH P LED 1F 4S MAM	5
8.0	EACH	TS BACKPLATE RET-REFL	1,2,3,4,5,6,7,8

SIGN SCHEDULE						
I-155 & IL 98 (BIRCHWOOD ST.)						
DESCRIPTION	SIGN PANEL TYPE	SIGN PANEL WIDTH (IN.)	SIGN PANEL HEIGHT (IN.)	SIGN PANEL (SQ FT.)	SIGN PANEL QTY.	LOCATION
FLASHING YELLOW ARROW	1	24.0	30.0	5.0	1.0	PROP. MA-1
ILLINOIS ROUTE 98 SIGN	1	24.0	24.0	4.0	1.0	PROP. MA-2
M6-4 SIGN (WHITE AND BLACK)	1	24.0	15.0	2.5	1.0	PROP. MA-2
I-155 (LEFT ARROW)	2	120.0	24.0	20.0	1.0	PROP. MA-1
BIRCHWOOD ST.	2	120.0	24.0	20.0	1.0	PROP. MA-2
ALL OTHER EX. SIGNS TO BE RELOCATED TO PROP. MAST ARMS						

NOT TO SCALE

MODEL Path: S:\CEN\WV\ORD\ESP\AN\Hanson, # 6805, I-98, Birchwood & I-155 Ramp Abat. Armil, 98 & I-155 Ramps, 02-01-24.dgn
FILE NAME: S:\CEN\WV\ORD\ESP\AN\Hanson, # 6805, I-98, Birchwood & I-155 Ramp Abat. Armil, 98 & I-155 Ramps, 02-01-24.dgn

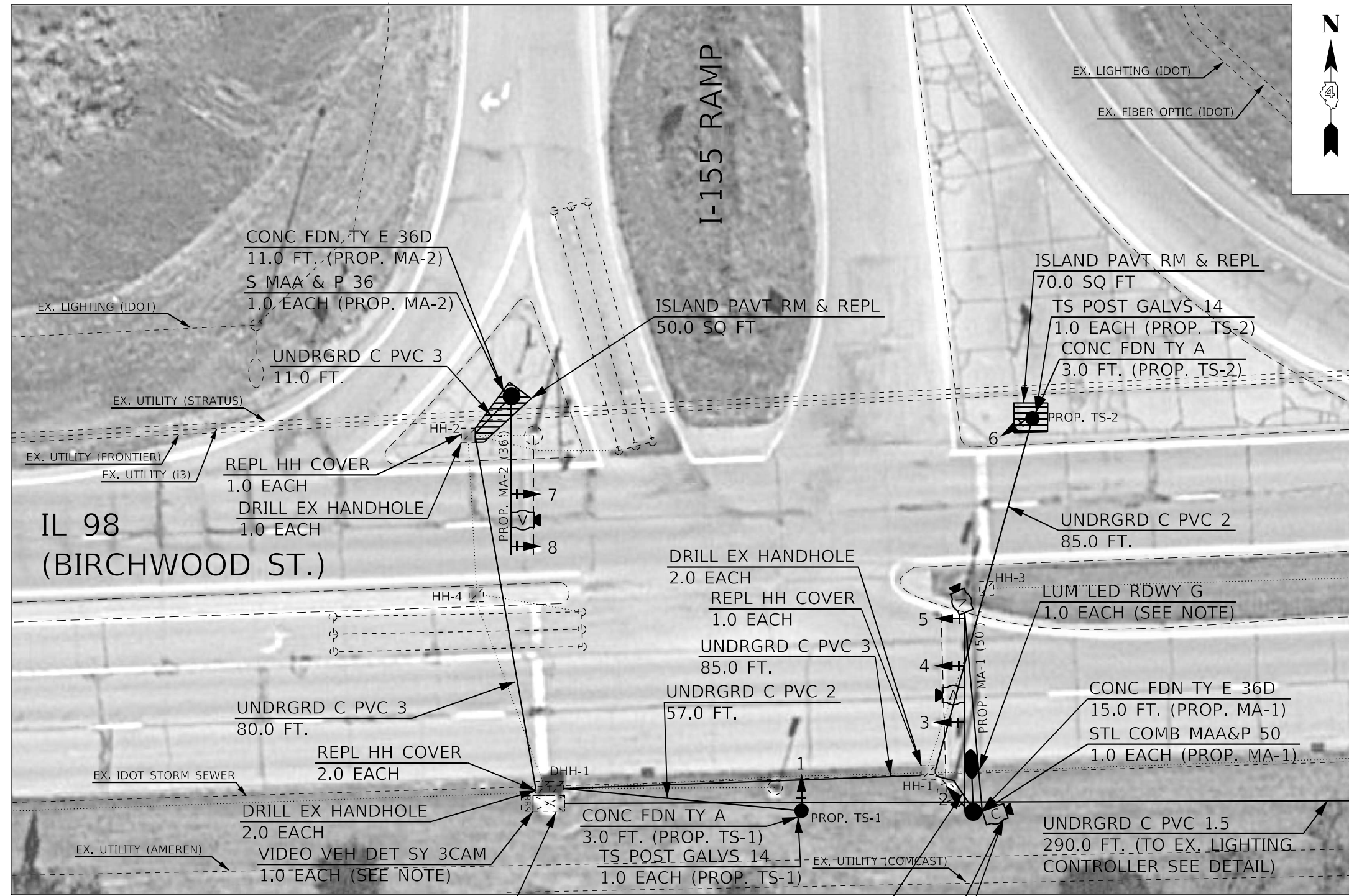
USER NAME = Trevor.Hanson	DESIGNED -	REVISED -
	DRAWN -	REVISED -
PLOT SCALE = 23,8272 */ in.	CHECKED -	REVISED -
PLOT DATE = 2/1/2024	DATE -	REVISED -

STATE OF ILLINOIS
DEPARTMENT OF TRANSPORTATION

TRAFFIC SIGNAL SCHEDULES

SCALE: SHEET OF SHEETS STA. TO STA.

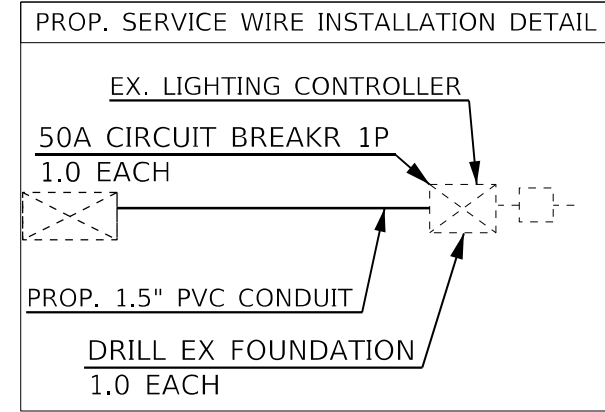
F.A.P. RTE.	SECTION	COUNTY	TOTAL SHEETS	SHEET NO.
6758	7(TS)	TAZEWELL	16	11
CONTRACT NO. 68105				
ILLINOIS FED. AID PROJECT				



BILL OF MATERIALS		
DESCRIPTION	UNIT	QTY.
SIGN PANEL - TYPE 1	SQ FT	11.5
SIGN PANEL - TYPE 2	SQ FT	40.0
UNDERGROUND CONDUIT, PVC, 1 1/2" DIA.	FOOT	290.0
UNDERGROUND CONDUIT, PVC, 2" DIA.	FOOT	142.0
UNDERGROUND CONDUIT, PVC, 3" DIA.	FOOT	190.0
ELECTRIC CABLE IN CONDUIT, 600V (XLP-TYPE USE) 1/C NO. 10	FOOT	257.0
ELECTRIC CABLE IN CONDUIT, 600V (XLP-TYPE USE) 1/C NO. 6	FOOT	604.0
LUMINAIRE, LED, ROADWAY, OUTPUT DESIGNATION G	EACH	1.0
ELECTRIC CABLE IN CONDUIT, SIGNAL NO. 14 5C	FOOT	617.5
ELECTRIC CABLE IN CONDUIT, SIGNAL NO. 14 7C	FOOT	409.0
ELECTRIC CABLE IN CONDUIT, EQUIPMENT GROUNDING CONDUCTOR, NO. 6 1C	FOOT	727.5
TRAFFIC SIGNAL POST, GALVANIZED STEEL 14 FT.	EACH	2.0
STEEL MAST ARM ASSEMBLY AND POLE, 36 FT.	EACH	1.0
STEEL COMBINATION MAST ARM ASSEMBLY AND POLE 50 FT.	EACH	1.0
CONCRETE FOUNDATION, TYPE A	FOOT	6.0
CONCRETE FOUNDATION, TYPE E 36-INCH DIAMETER	FOOT	26.0
DRILL EXISTING FOUNDATION	EACH	2.0
DRILL EXISTING HANDHOLE	EACH	5.0
SIGNAL HEAD, POLYCARBONATE, LED, 1-FACE, 3-SECTION, BRACKET MOUNTED	EACH	2.0
SIGNAL HEAD, POLYCARBONATE, LED, 1-FACE, 3-SECTION, MAST ARM MOUNTED	EACH	4.0
SIGNAL HEAD, POLYCARBONATE, LED, 1-FACE, 4-SECTION, BRACKET MOUNTED	EACH	1.0
SIGNAL HEAD, POLYCARBONATE, LED, 1-FACE, 4-SECTION, MAST ARM MOUNTED	EACH	1.0
TRAFFIC SIGNAL BACKPLATE, RETROREFLECTIVE	EACH	8.0
CLOSED CIRCUIT TELEVISION DOME CAMERA, HD	EACH	1.0
VIDEO VEHICLE DETECTION SYSTEM, 3 CAMERAS	EACH	1.0
CAT 5 ETHERNET CABLE	FOOT	171.5
ISLAND PAVEMENT REMOVAL AND REPLACEMENT	SQ FT	120.0
REPLACE HANDHOLE COVER	EACH	4.0
50A CIRCUIT BREAKER, 1P	EACH	1.0

- NOTES:
1. THE CONTRACTOR SHALL FURNISH AND INSTALL A 20A 1-POLE CIRCUIT BREAKER, TERMINAL BLOCOS, WIRING, BUTTON PHOTOCCELL (INSTALLED IN CABINET OVERHANG), AND ALL OTHER ITEMS REQUIRED TO PROVIDE PHOTOCCELL CONTROL INSIDE THE EXISTING TRAFFIC SIGNAL CONTROLLER CABINET FOR THE PROPOSED LED ROADWAY LUMINAIRE AT THIS LOCATION. THE LUMINAIRE SHALL BE WIRED FOR 120V OPERATION. THE CONTRACTOR SHALL RE-ARRANGE THE EXISTING CABINET COMPONENTS AS NEEDED TO ACCOMMODATE THE INSTALLATION OF THE PROPOSED LIGHTING COMPONENTS. THE PROPOSED LIGHTING COMPONENTS SHALL NOT INTERFERE WITH CABINET OPERATION AND MAINTENANCE. THE CONTRACTOR SHALL LABEL ALL POWER WIRING AND LUMINAIRE FIELD WIRING WITH PERMANENT LABELS. THE CONTRACTOR SHALL SUBMIT CATALOG CUTS FOR ALL COMPONENTS TO THE DEPARTMENT FOR REVIEW AND APPROVAL PRIOR TO ORDERING MATERIALS. THIS WORK WILL NOT BE PAID FOR SEPARATELY, BUT SHALL BE INCLUDED IN THE COST OF THE PROPOSED LED LUMINAIRE.
 2. THE CONTRACTOR SHALL FURNISH AND INSTALL THE VIDEO VEHICLE DETECTION SYSTEM, 3 CAMERA AS DESCRIBED IN THE SPECIAL PROVISIONS.
 3. THE CONTRACTOR SHALL FURNISH AND INSTALL ONE 50A CIRCUIT BREAKER, 1-POLE IN THE EXISTING LIGHTING CONTROLLER. THE CONTRACTOR SHALL RE-ARRANGE THE EXISTING CABINET COMPONENTS AS NEEDED TO ACCOMMODATE THE INSTALLATION OF THE PROPOSED CIRCUIT BREAKER. THE PROPOSED SERVICE WIRES SHALL BE TERMINATED ON THE PROPOSED 50A CIRCUIT BREAKER TO PROVIDE POWER TO THE EXISTING TRAFFIC SIGNAL CABINET. THE COST OF THIS WORK WILL NOT BE PAID FOR SEPARATELY, BUT SHALL BE INCLUDED IN THE COST OF THE PROPOSED 50A CIRCUIT BREAKER, 1-POLE.
 4. PROPOSED VIDEO DETECTION CAMERAS SHALL BE INSTALLED ON 5 FT. BRACKETS.

NOT TO SCALE



LEGEND	
	EX. TS CONTROLLER CABINET
	EX. DOUBLE HANDHOLE
	EX. HANDHOLE
	EX. BATTERY BACKUP SYSTEM
	EX. MAST ARM ASSEMBLY AND POLE
	EX. TRAFFIC SIGNAL POST
	EX. LIGHT POLE
	EX. QUADRAPOLE DETECTOR LOOP
	EX. DETECTOR LOOP
	EX. CONDUIT
	EX. LIGHTING CONTROLLER
	EX. ELECTRIC SERVICE
	PROP. VEHICLE VIDEO DETECTION CAMERA
	PROP. SIGNAL HEAD (WITH BACKPLATE)
	PROP. MAST ARM ASSEMBLY AND POLE
	PROP. COMBINATION MAST ARM ASSEMBLY AND POLE
	PROP. TRAFFIC SIGNAL POST
	PROP. LED LUMINAIRE
	PROP. CCTV CAMERA
	"R"

USER NAME = Trevor, Hanson	DESIGNED -	REVISED 02-07-24 TJH
PLOT SCALE = 23,8272' / in.	DRAWN -	REVISED -
PLOT DATE = 2/7/2024	CHECKED -	REVISED -
	DATE -	REVISED -

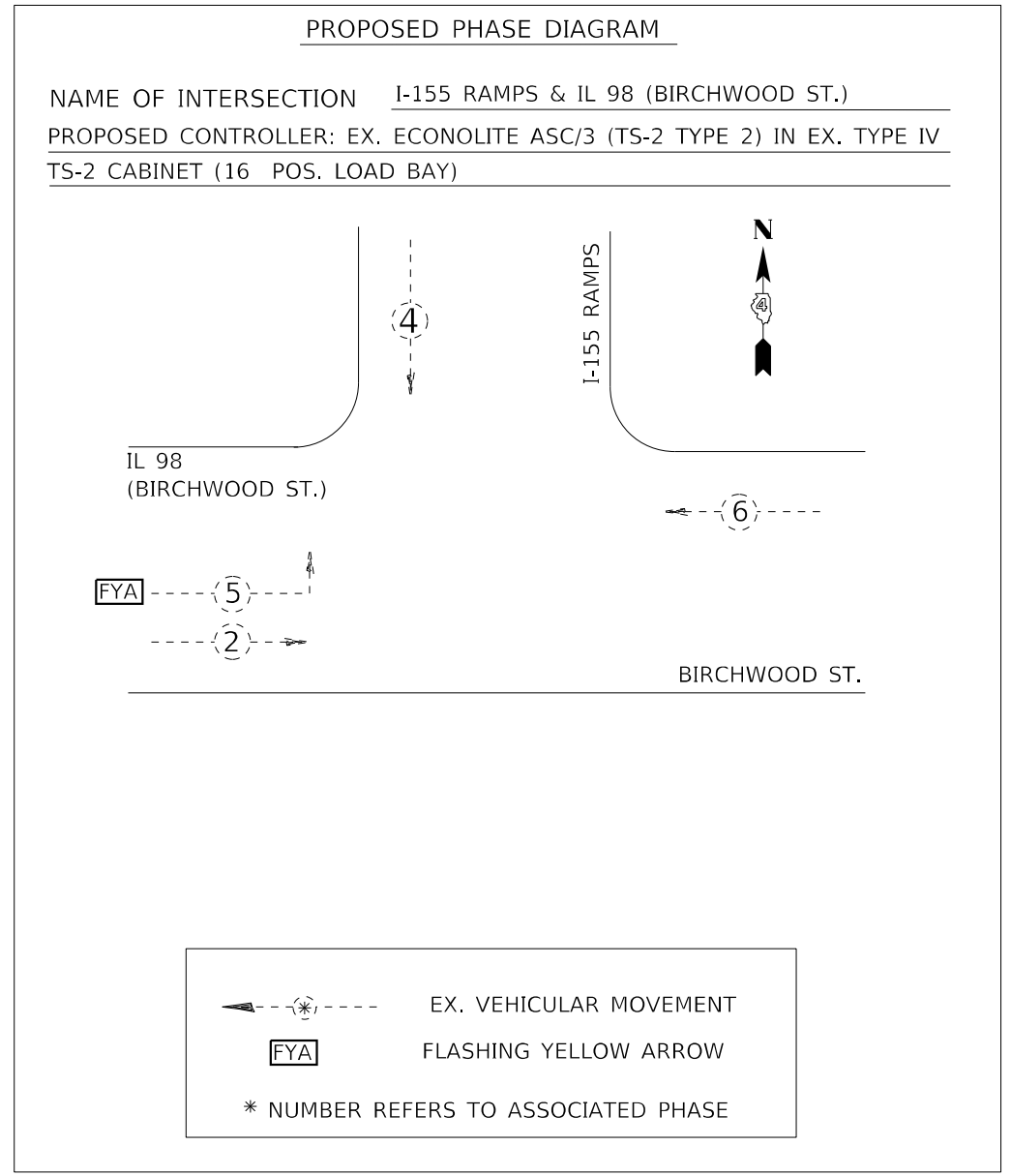
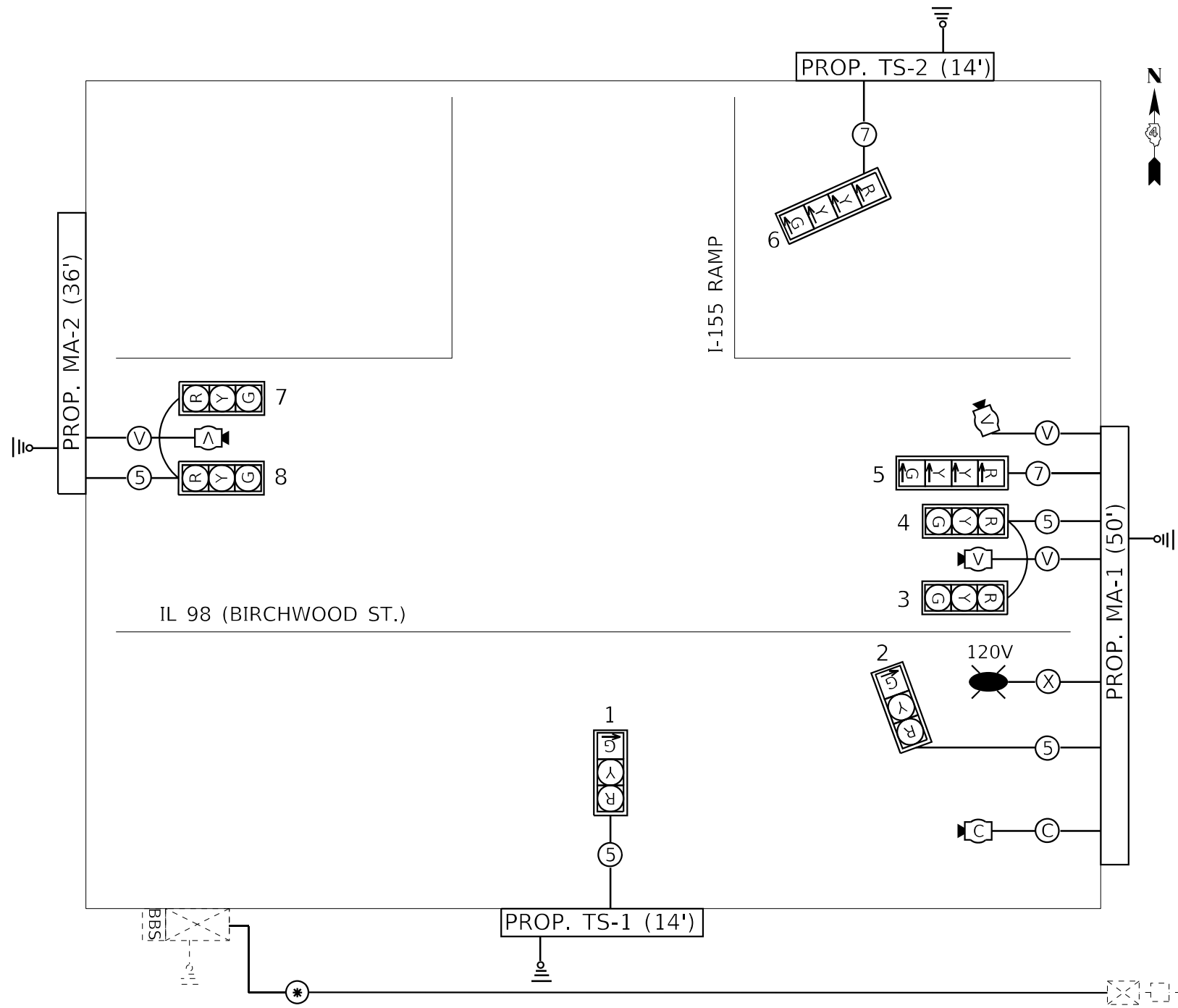
STATE OF ILLINOIS
DEPARTMENT OF TRANSPORTATION

PROPOSED TRAFFIC SIGNAL PLANS

SCALE: SHEET OF SHEETS STA. TO STA.

F.A.P. RTE.	SECTION	COUNTY	TOTAL SHEETS	SHEET NO.
6758	7(TS)	TAZEWELL	16	12
ILLINOIS FED. AID PROJECT			CONTRACT NO. 68105	

MODEL Path: S:\CEN\WV\0805\SP\AN\Hanson\Comp\Draw\Contract\12404 Letting_68105 IL 98 Birchwood & I-155 Ramp Mast Arm\IL 98 & I-155 Ramp 02-07-24.dgn



TRAFFIC SIGNALS LEGEND

- | | | |
|---|---|--|
| <ul style="list-style-type: none"> EX. TRAFFIC SIGNAL CONTROLLER CABINET EX. BATTERY BACKUP SYSTEM EX. ELECTRIC SERVICE EX. LIGHTING CONTROLLER EX. GROUND/SAFETY BOND PROP. GROUND/SAFETY BOND | <ul style="list-style-type: none"> PROP. 3 SEC. SIGNAL HEAD WITH BACKPLATE PROP. SOLID SIGNAL INDICATION PROP. ARROW SIGNAL INDICATION PROP. ROADWAY LUMINAIRE PROP. VIDEO VEHICLE DETECTION CAMERA PROP. CCTV CAMERA | <ul style="list-style-type: none"> PROP. 5/C NO. 14 SIGNAL CABLE PROP. 7/C NO. 14 SIGNAL CABLE PROP. 1/C 600V (XLP-TYPE USE) NO. 10 CABLE X 2 PROP. 1/C NO. 6 CABLE PROP. VIDEO DETECTION CABLE PROP. CAT 5 ETHERNET CABLE |
|---|---|--|

NOT TO SCALE

MODEL: Default
FILE NAME: S:\CEN\WV\ORD\ESP\AV\Hanson\68105 IL 98 Birchwood & I-155 Ramp Hbrt ArmU1_98 & I-155 Ramps_02-01-24.dgn

USER NAME = Trevor.Hanson	DESIGNED -	REVISED -	
DRAWN -	REVISOR -	REVISION -	
PLOT SCALE = 23,8272 * / in.	CHECKED -	REVISOR -	
PLOT DATE = 2/1/2024	DATE -	REVISION -	

**STATE OF ILLINOIS
DEPARTMENT OF TRANSPORTATION**

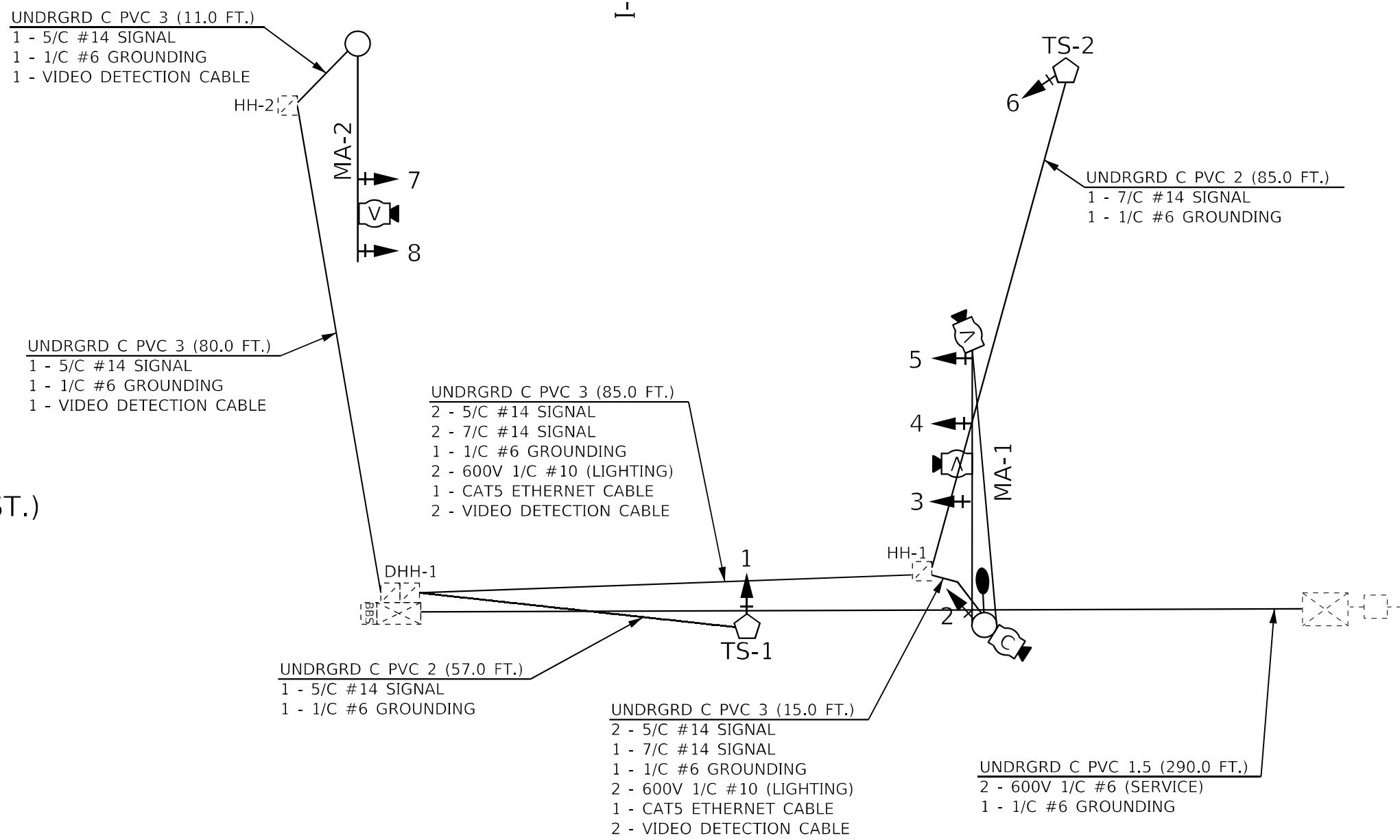
PROPOSED CIRCUIT AND PHASE DIAGRAMS			
SCALE:	SHEET	OF SHEETS	STA. TO STA.

F.A.P. RTE.	SECTION	COUNTY	TOTAL SHEETS	SHEET NO.
6758	7(TS)	TAZEWELL	16	13
CONTRACT NO. 68105				
ILLINOIS FED. AID PROJECT				

I-155 RAMP

IL 98 (BIRCHWOOD ST.)

LEGEND	
	PROP. MAST ARM
	PROP. TRAFFIC SIGNAL POST
	PROP. TRAFFIC SIGNAL HEAD
	PROP. VIDEO DETECTION CAMERA
	PROP. CCTV CAMERA
	PROP. LED LUMINAIRE
	EX. CONTROLLER CABINET
	EX. BATTERY BACKUP
	EX. HANDHOLE
	EX. DOUBLE HANDHOLE
	EX. LIGHTING CONTROLLER
	EX. ELECTRIC SERVICE



MODEL: D:\p\h\...
 FILE NAME: S:\CEN\W\I\ORD\DESIGN\AN\Hanson_68105_IL_98_Birchwood & I-155 Ramp Mast Arm\I_98 & I-155 Ramp_02-01-24.dgn

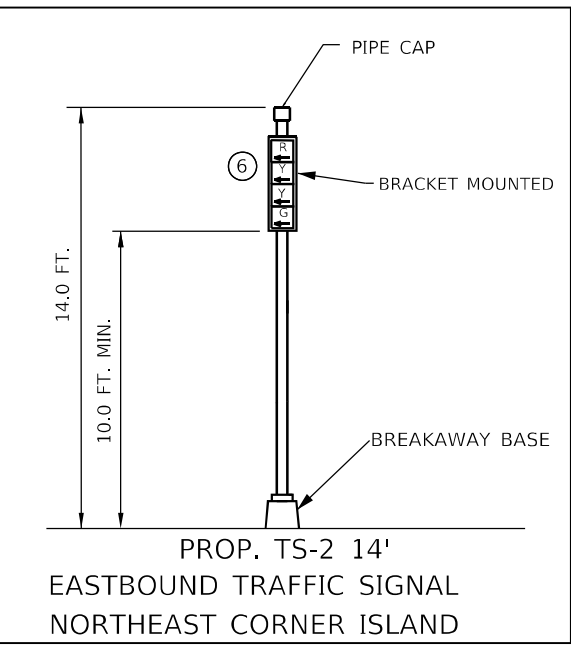
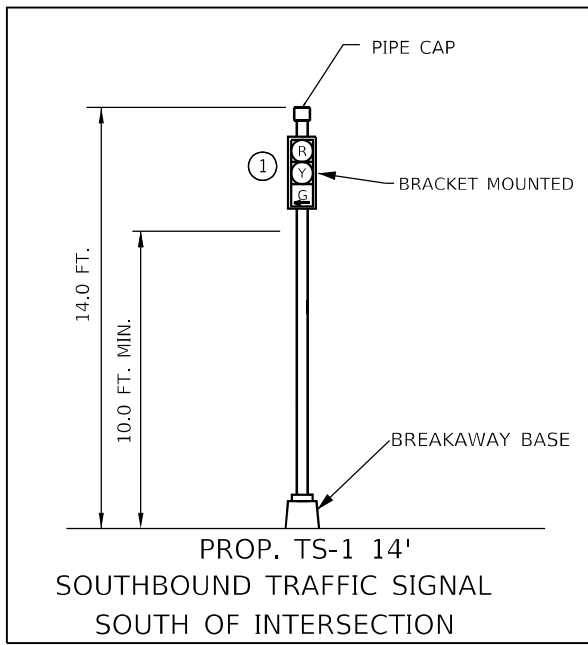
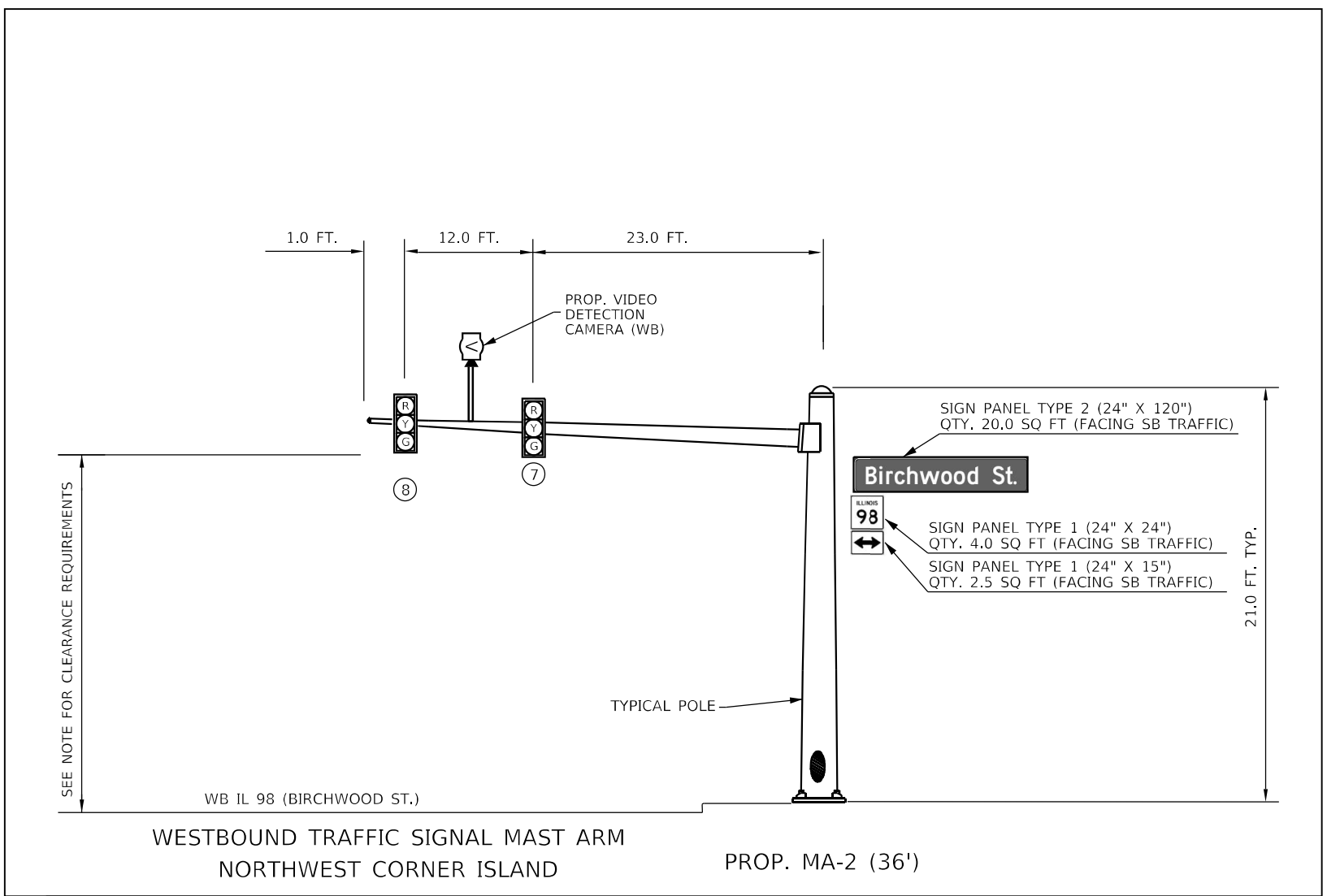
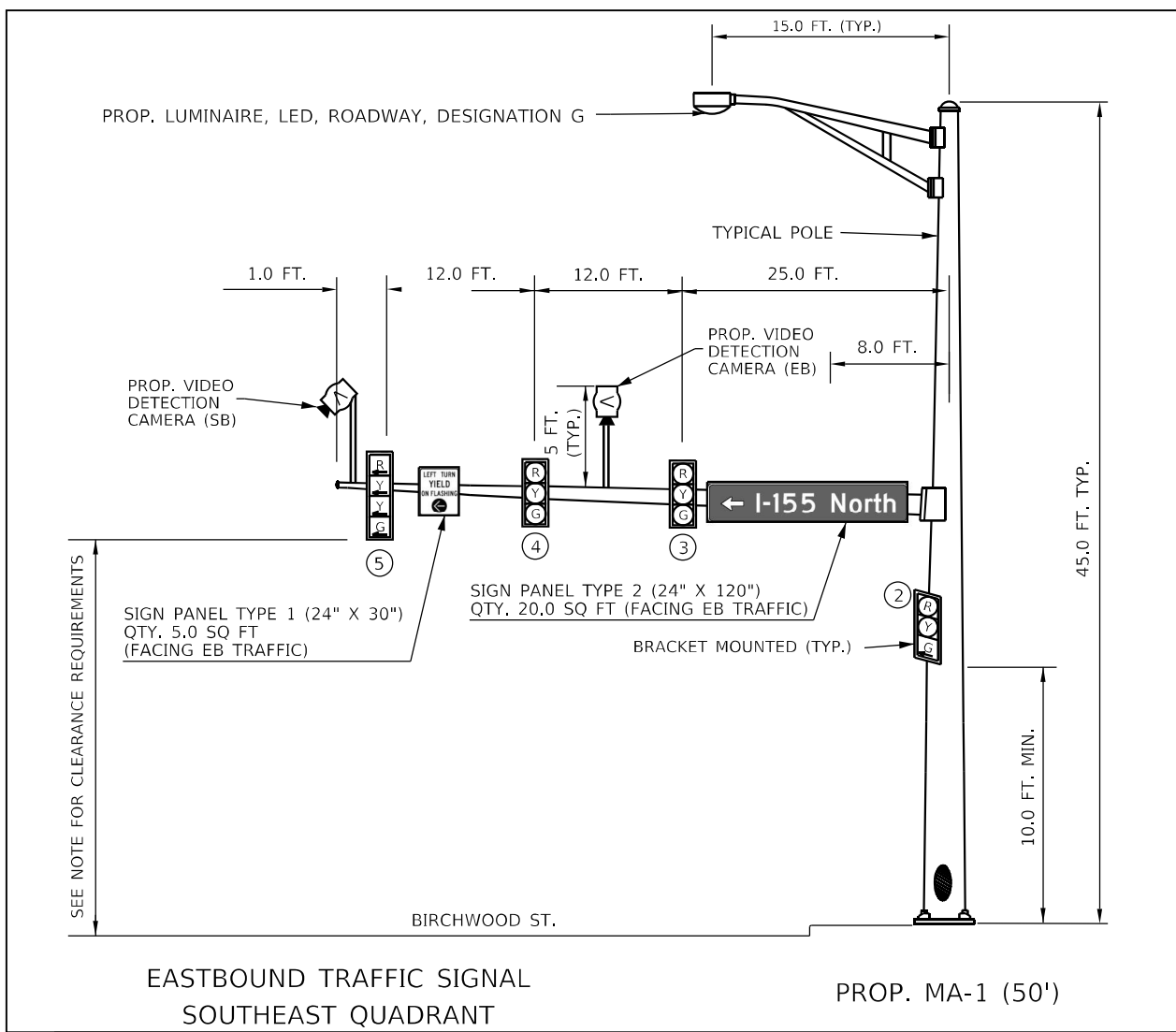
NOT TO SCALE

USER NAME = Trevor.Hanson	DESIGNED -	REVISED -
DRAWN -	REVISOR -	
PLOT SCALE = 23,8272 * / in.	CHECKED -	REVISOR -
PLOT DATE = 2/1/2024	DATE -	REVISOR -

**STATE OF ILLINOIS
DEPARTMENT OF TRANSPORTATION**

PROPOSED TRAFFIC SIGNAL CABLE PLAN			
SCALE:	SHEET	OF SHEETS	STA. TO STA.

F.A.P. RTE. 6758	SECTION 7(TS)	COUNTY TAZEWELL	TOTAL SHEETS 16	SHEET NO. 14
CONTRACT NO. 68105				
ILLINOIS FED. AID PROJECT				



- NOTES:
- CLEARANCE REQUIREMENTS BETWEEN THE BOTTOM OF THE LOWEST SIGNAL HEAD BACKPLATE AND THE HIGHEST POINT OF THE PAVEMENT: 16.0 FT. (MIN.) AND 18.0 FT. (MAX.)
 - THE CONTRACTOR SHALL FURNISH AND INSTALL 5 FT. EXTENSION BRACKETS FOR EACH OF THE VIDEO DETECTION CAMERAS. THIS WORK WILL NOT BE PAID FOR SEPARATELY, BUT SHALL BE INCLUDED IN THE BID PRICE FOR THE WIDE AREA VIDEO DETECTION SYSTEM COMPLETE.
 - THE VIDEO DETECTION CAMERA FOR SB TRAFFIC SHALL BE INSTALLED ON THE EB MAST ARM.

MODEL Path: \\S:\CEN\WV\ORD\DESIGN\AN\Hanson\6805 IL 98 Birchwood & I-155 Ramp Abet Arm\11 98 & I-155 Ramp\02-01-24.dgn

USER NAME = Trevor.Hanson	DESIGNED -	REVISED -
PLOT SCALE = 23,8272 * / in.	DRAWN -	REVISED -
PLOT DATE = 2/1/2024	CHECKED -	REVISED -
	DATE -	REVISED -

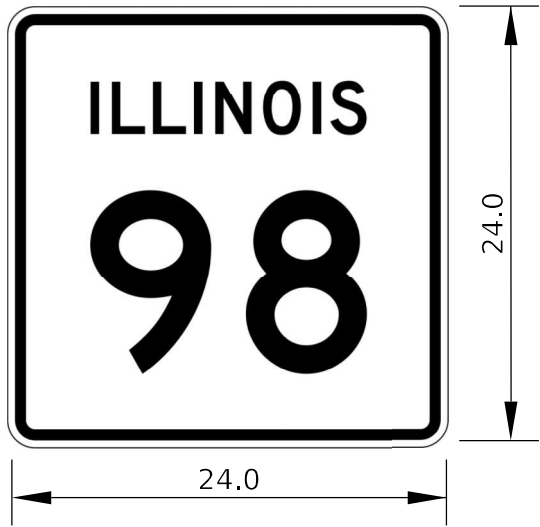
STATE OF ILLINOIS
DEPARTMENT OF TRANSPORTATION

PROPOSED MAST ARM AND TRAFFIC SIGNAL POST DETAILS			
SCALE:	SHEET	OF SHEETS	STA. TO STA.

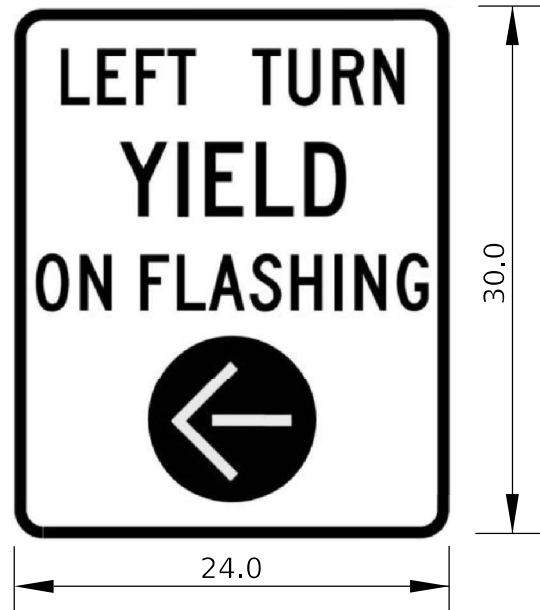
F.A.P. RTE. 6758	SECTION 7(TS)	COUNTY TAZEWELL	TOTAL SHEETS 16	SHEET NO. 15
CONTRACT NO. 68105				
ILLINOIS FED. AID PROJECT				

NOT TO SCALE

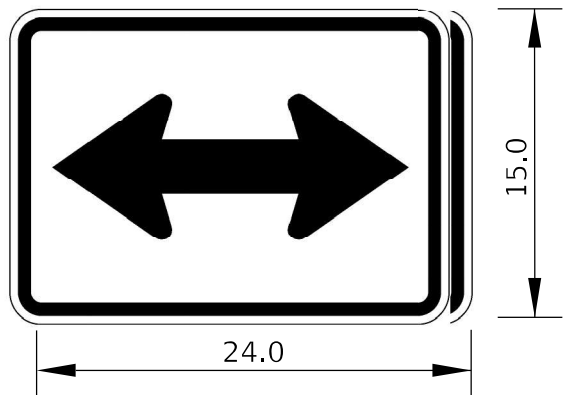
ILLINOIS ROUTE 98 SIGN



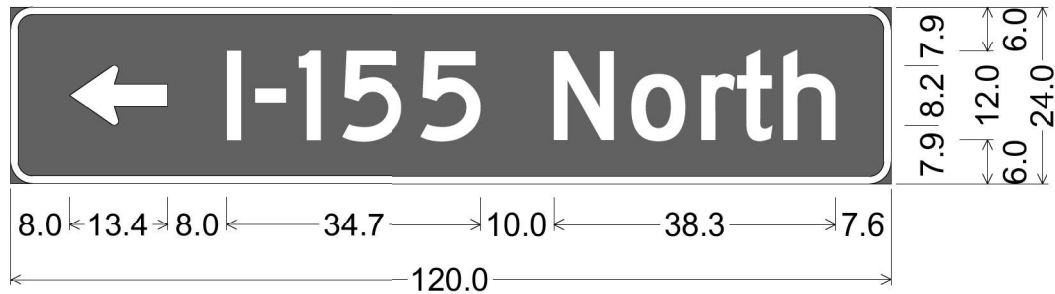
FLASHING YELLOW ARROW SIGN



M6-4 SIGN (WHITE AND BLACK)



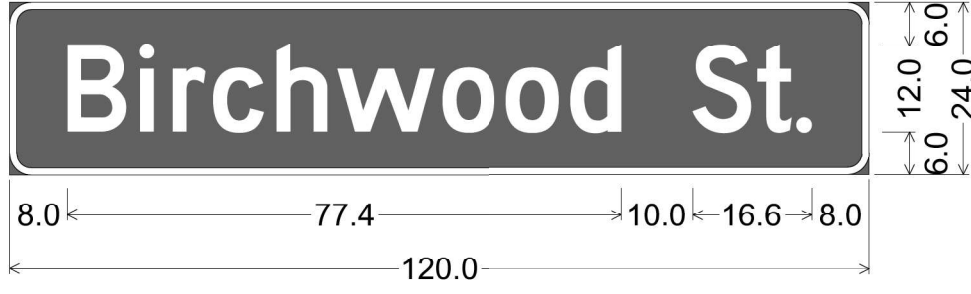
ALL SIGN DIMENSION UNITS ARE INCHES UNLESS STATED OTHERWISE



3.0" Radius, 1.0" Border, White on Green;
 Standard Arrow 3 13.4" X 8.1" 180°;
 "I-155 North", D 2K 111% spacing;

Table of distances between letter and object lefts

←	I	-	I	5	5	N	o	r	t	h		
8.0	21.4	3.9	5.9	5.9	10.9	18.1	10.6	9.4	5.0	6.2	7.1	7.6



3.0" Radius, 1.0" Border, White on Green;
 "Birchwood St.", D 2K 111% spacing;

Table of distances between letter and object lefts

B	i	r	c	h	w	o	o	d	S	t	.		
8.0	10.2	4.6	5.6	8.8	8.5	14.7	8.9	8.9	17.2	8.9	5.5	2.2	8.0

MODEL PATH: S:\CEN\WV\ORD\ESP\AN\Hanson# 6805 IL 98 Birchwood & I-155 Ramp Abat. Amul. 98 & I-155 Ramp. (02-01-24).dgn

NOT TO SCALE

USER NAME = Trevor.Hanson	DESIGNED -	REVISED -
PLOT SCALE = 23,8272 */ in.	DRAWN -	REVISED -
PLOT DATE = 2/1/2024	CHECKED -	REVISED -
	DATE -	REVISED -

STATE OF ILLINOIS
 DEPARTMENT OF TRANSPORTATION

PROPOSED SIGN PANEL DETAILS

SCALE: SHEET OF SHEETS STA. TO STA.

F.A.P. RTE. 6758	SECTION 7(TS)	COUNTY TAZEWELL	TOTAL SHEETS 16	SHEET NO. 16
CONTRACT NO. 68105			ILLINOIS FED. AID PROJECT	