

04-26-2024 LETTING ITEM 075

STATE OF ILLINOIS  
DEPARTMENT OF TRANSPORTATION

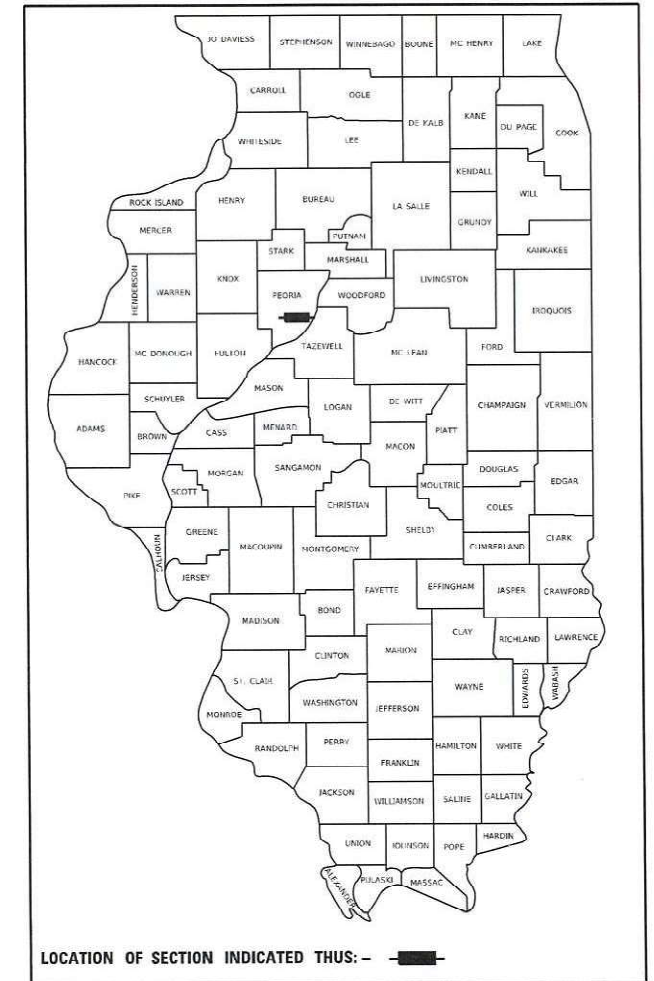
F.A.P. RTE. 318	SECTION (9)TS-1	COUNTY PEORIA	TOTAL SHEETS 18	SHEET NO. 1
		ILLINOIS	CONTRACT NO. 68J05	

D-94-029-24

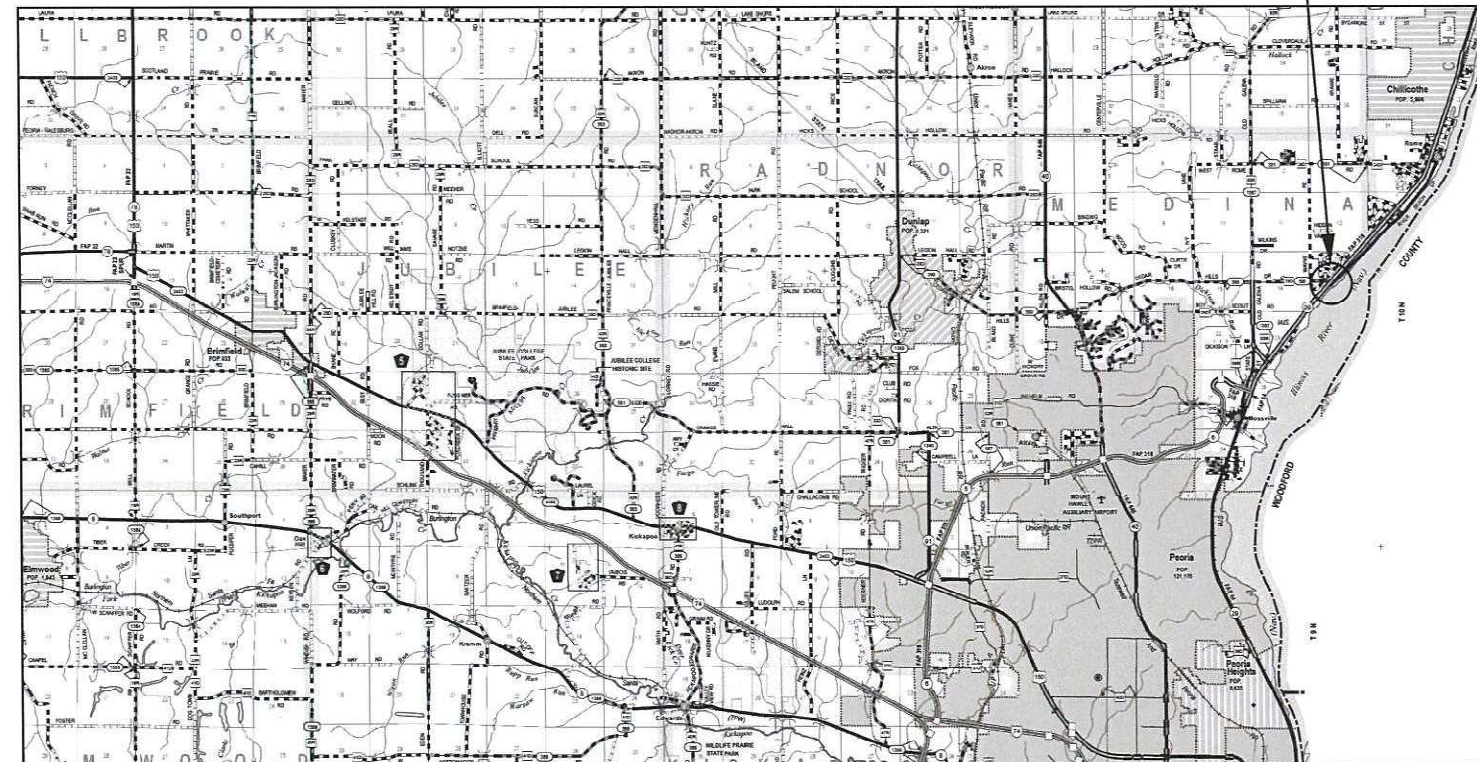
INDEX OF SHEETS:  
SEE SHEET 2 FOR INDEX OF SHEETS

# PROPOSED HIGHWAY PLANS

FAP ROUTE 318 (IL 29)  
SECTION (9)TS-1  
PEORIA COUNTY  
PROJECT NO. NHPP-BTPH(676)  
C-94-033-24



IL 29 & CEDAR HILLS DRIVE.



HIGHWAY STANDARDS:  
SEE SHEET 2 FOR A LIST OF  
APPLICABLE HIGHWAY STANDARDS

PROJECT DESCRIPTION:  
TRAFFIC SIGNAL MAST ARM REPLACEMENT  
AT IL 29 & CEDAR HILLS DRIVE IN  
PEORIA COUNTY.

J.U.L.I.E.  
JOINT UTILITY LOCATION INFORMATION FOR EXCAVATORS  
1-800-892-0123  
OR 811

PROJECT ENGINEER : TREVOR HANSON (309) 671-4474  
PROJECT MANAGER : ERIC HOWALD (309) 671-4481  
CATALOG NO. 036481-00D  
CONTRACT NO. 68J05

STATE OF ILLINOIS  
DEPARTMENT OF TRANSPORTATION

SUBMITTED February 2, 2024  
Jon A. James REGIONAL ENGINEER

March 22, 2024 Steph A. Elk  
ENGINEER OF DESIGN AND ENVIRONMENT

March 22, 2024 Steph M. Smith  
DIRECTOR OF HIGHWAYS PROJECT IMPLEMENTATION

PRINTED BY THE AUTHORITY  
OF THE STATE OF ILLINOIS

NO COMMITMENTS HAVE BEEN MADE IN CONJUNCTION WITH THIS PROJECT.

INDEX OF SHEETS	
SHEET	DESCRIPTION
1	COVER SHEET
2	COMMITMENTS, INDEX OF SHEETS, HIGHWAY STANDARDS, & TRAFFIC SIGNAL CONSTRUCTION STAGING NOTES
3	STATUS OF UTILITIES
4	CONSTRUCTION NOTES
5 - 6	SUMMARY OF QUANTITIES
7 - 8	EXISTING TRAFFIC SIGNAL PLANS
9	EXISTING TRAFFIC SIGNAL PLANS & REMOVAL ITEMS
10	EXISTING CIRCUIT & PHASE DIAGRAMS
11	PROPOSED TRAFFIC SIGNAL SCHEDULES
12	PROPOSED TRAFFIC SIGNAL PLANS (AT AND BELOW GRADE)
13	PROPOSED TRAFFIC SIGNAL PLANS (ABOVE GRADE)
14	PROPOSED CIRCUIT AND PHASE DIAGRAMS
15	PROPOSED TRAFFIC SIGNAL CABLE PLAN
16	PROPOSED MAST ARM AND TRAFFIC SIGNAL POST DETAILS
17	ELECTRIC SERVICE INSTALLATION DETAIL
18	SIGN PANEL DETAILS

HIGHWAY STANDARDS	
000001-08	STANDARD SYMBOLS, ABBREVIATIONS AND PATTERNS
001006	DECIMAL OF AN INCH & FOOT
701001-02	OFF-ROAD OPERATIONS, 2L, 2W, MORE THAN 15' AWAY
701006-05	OFF-ROAD OPERATIONS, 2L, 2W, 15' TO 24" FROM PAVEMENT EDGE
701101-05	OFF-ROAD OPERATIONS, MULTILANE, 15' TO 24" FROM PAVEMENT EDGE
701106-02	OFF-ROAD OPERATIONS, MULTILANE, MORE THAN 15' AWAY
701601-09	URBAN LANE CLOSURE, MULTILANE, 1W OR 2W WITH NONTRAVERSABLE MEDIAN
701701-10	URBAN LANE CLOSURE, MULTILANE INTERSECTION
701901-09	TRAFFIC CONTROL DEVICES
720001-01	SIGN PANEL MOUNTING DETAILS
720016-04	MAST ARM MOUNTED STREET NAME SIGNS
814001-03	HANDHOLES
821101-02	LUMINARE WIRING IN POLE
857001-01	STANDARD PHASE DESIGNATION DIAGRAMS AND PHASE SEQUENCES
873001-02	TRAFFIC SIGNAL GROUNDING & BONDING
877011-10	STEEL COMB. MAST ARM ASSEMBLY AND POLE 16' THROUGH 55'
878001-11	CONCRETE FOUNDATION DETAILS
880006-01	TRAFFIC SIGNAL MOUNTING DETAILS

TRAFFIC SIGNAL CONSTRUCTION STAGING NOTES	
1.	THE CONTRACTOR WILL BE ALLOWED TO PLACE THE INTERSECTION INTO ALL-RED FLASH MODE TO FACILITATE THE INSTALLATION OF THE PROPOSED TRAFFIC SIGNAL MAST ARMS, POSTS, SIGNAL HEADS, ELECTRICAL CABLE AND OTHER COMPONENTS.
2.	THE CONTRACTOR SHALL FURNISH AND INSTALL A MINIMUM OF TWO STOP SIGNS PER APPROACH WHEN THE INTERSECTION IS OPERATING IN ALL-RED FLASH MODE. THE TRAFFIC SIGNALS MAY BE PLACED INTO ALL-RED FLASH MODE BETWEEN THE HOURS OF 8:30AM AND 3:00PM ONLY.
3.	THE CONTRACTOR SHALL RESTORE THE TRAFFIC SIGNALS TO NORMAL OPERATION AT ALL OTHER TIMES, UNLESS SPECIFICALLY DIRECTED OTHERWISE BY THE ENGINEER.
4.	THE CONTRACTOR WILL BE ALLOWED TO PLACE THE INTERSECTION INTO FLASH FOR A MAXIMUM OF FIVE DAYS PER EACH LOCATION.
5.	THE CONTRACTOR WILL BE ALLOWED TO MAKE TEMPORARY SPLICES AS NEEDED TO FACILITATE THE INSTALLATION OF THE PROPOSED TRAFFIC SIGNAL EQUIPMENT.
6.	ALL COSTS (LABOR, MATERIALS, AND EQUIPMENT) ASSOCIATED WITH THESE REQUIREMENTS SHALL BE INCLUDED IN THE CONTRACT BID PRICE FOR THE PAY ITEM "TRAFFIC CONTROL AND PROTECTION, (SPECIAL)." THERE WILL BE NO ADDITIONAL COMPENSATION FOR ITEMS REQUIRED TO IMPLEMENT STAGING, INCLUDING, BUT NOT LIMITED TO, TEMPORARY CABLE SPLICES, TEMPORARY TRAFFIC POSTS, AND PREMIUM TIME HOURS.

MODEL PATH: S:\CEN\W\W000000\SP\AN\Hanson# 68J05 IL 29 & Cedar Hill# 02-01-24.dgn

USER NAME = Trevor.Hanson	DESIGNED -	REVISED -
	DRAWN -	REVISED -
PLOT SCALE = 23,8272 */ in.	CHECKED -	REVISED -
PLOT DATE = 2/1/2024	DATE -	REVISED -

**STATE OF ILLINOIS  
DEPARTMENT OF TRANSPORTATION**

**COMMITMENTS, INDEX OF SHEETS, HIGHWAY STANDARDS, &  
TRAFFIC SIGNAL CONSTRUCTION STAGING NOTES**

SCALE: SHEET OF SHEETS STA. TO STA.

F.A.P. RTE.	SECTION	COUNTY	TOTAL SHEETS	SHEET NO.
318	(9)TS-1	PEORIA	18	2
CONTRACT NO. 68J05				
ILLINOIS FED. AID PROJECT				



STATUS OF UTILITIES					
COMPANY	CONTACT	TYPE OF UTILITY	TYPE OF CONFLICT	LOCATION	DISPOSITION
MEDIACOM	CHRIS MINARD 6925 GARDEN PRAIRIE RD. GARDEN PRAIRIE, IL 61038	COMMUNICATIONS	MAST ARM, TS POST	NE, NW QUADRANTS	CAUTION
STRATUS	TONY JORDAN 4700 N. PROSPECT RD. PEORIA HEIGHTS, IL 61616	COMMUNICATIONS	MAST ARM, TS POST	NE, NW QUADRANTS	CAUTION
I3 BROADBAND	JOE MILLER 602 HIGH POINT LN. EAST PEORIA, IL 61611	FIBER OPTIC	TS POST, UNDERGROUND CONDUIT	NW QUADRANT	CAUTION
AMEREN	JON REICK 8420 N. UNIVERSITY ST. PEORIA, IL 61615	ELECTRIC (AERIAL)	MAST ARM	PROPOSED MA-1, MA-2	CAUTION
AMEREN	ELIZABETH COOKE 7064 W. US ROUTE 150 EDWARDS, IL 61528	GAS	TS POST, UNDERGROUND CONDUIT	NW QUADRANT	CAUTION
ILLINOIS AMERICAN WATER	CHARLES BARTON 7500 N. HARKER DR. PEORIA, IL 61615	WATER LINE	TS POST, UNDERGROUND CONDUIT, ELECTRIC SERVICE	NW, SW QUADRANTS	CAUTION

UTILITY DEPTHS TO BE DETERMINED THROUGH UTILITY LOCATES AND POT HOLING

MODEL Path: \\S:\CEN\W\W\ORD\DESIGN\AN\Hanson\# 68105 IL 29 & Cedar Hill\1111 29 & Cedar Hill 102-01-241.dgn  
FILE NAME: S:\CEN\W\W\ORD\DESIGN\AN\Hanson\# 68105 IL 29 & Cedar Hill 102-01-241.dgn

USER NAME = Trevor.Hanson	DESIGNED -	REVISED -
	DRAWN -	REVISED -
PLOT SCALE = 23,8272 * / in.	CHECKED -	REVISED -
PLOT DATE = 2/1/2024	DATE -	REVISED -

**STATE OF ILLINOIS  
DEPARTMENT OF TRANSPORTATION**

**STATUS OF UTILITIES**

SCALE: SHEET OF SHEETS STA. TO STA.

F.A.P. RTE.	SECTION	COUNTY	TOTAL SHEETS	SHEET NO.
318	(9)TS-1	PEORIA	18	3
CONTRACT NO. 68105				
ILLINOIS FED. AID PROJECT				

**CONSTRUCTION NOTES**

1.	THE LOCATION OF ALL UTILITIES AND PRIVATELY OWNED FACILITIES SHALL BE FIELD VERIFIED BY THE CONTRACTOR PRIOR TO THE INSTALLATION OF ANY COMPONENTS.
2.	THE CONTRACTOR SHALL BE RESPONSIBLE FOR LOCATING EXISTING IDOT ELECTRICAL FACILITIES AT HIS/HER OWN EXPENSE IF REQUIRED. THE CONTRACTOR SHALL ALSO BE LIABLE FOR ANY DAMAGE TO IDOT FACILITIES RESULTING FROM INACCURATE LOCATING
3.	ELECTRICAL WORK SHALL CONFORM WITH NATIONAL, STATE, AND LOCAL CODES.
4.	THE LOCATIONS FOR HANDHOLES AND CONCRETE FOUNDATIONS ARE PROVIDED FOR REFERENCE ONLY. THE ENGINEER OF TRAFFIC SHALL BE NOTIFIED FOR LOCATION VERIFICATION BEFORE INSTALLATION.
5.	ALL TRAFFIC SIGNAL SECTIONS SHALL HAVE 12" SINGLE LED LENSES.
6.	THE RED SECTIONS OF THE SIGNAL HEADS SHARING THE SAME MAST ARM SHALL BE LEVEL WITH ONE ANOTHER AND MAINTAIN A 16 FT. MINIMUM CLEARANCE FROM THE HIGHEST POINT OF THE ROADWAY TO BOTTOM OF THE SIGNAL BACKPLATE.
7.	ALL TRAFFIC SIGNAL HEAD BRACKETS ARE TO BE GALVANIZED STEEL WITH A NATURAL FINISH.
8.	ALL TRAFFIC SIGNAL STRUCTURES SHALL BE BONDED IN ACCORDANCE WITH NEC REQUIREMENTS. THIS WORK SHALL BE PAID FOR AT THE CONTRACT UNIT PRICE FOR "ELECTRIC CABLE IN CONDUIT, EQUIPMENT GROUNDING CONDUCTOR, NO. 6 1C" AND SHALL INCLUDE ALL LABOR, EQUIPMENT, AND MATERIALS (INCLUDING CLAMPS, HARDWARE, ELECTRICAL CABLE, AND ALL OTHER ITEMS REQUIRED TO BOND THE STRUCTURES).
9.	SDR 13.5 HDPE COILABLE DUCT MAY BE USED IN PLACE OF SCHEDULE 40 PVC CONDUIT.
10.	THE CONTRACTOR SHALL PROVIDE ELECTRICAL CABLE SLACK IN ACCORDANCE WITH ARTICLE 873.03.
11.	ELECTRICAL CABLE WILL BE MEASURED FOR PAYMENT IN ACCORDANCE WITH ARTICLE 873.04.
12.	THE CONTRACTOR SHALL VERIFY FIELD CONDITIONS PRIOR TO BIDDING. THERE WILL BE NO ADDITIONAL COMPENSATION PAID FOR CLAIMS THAT ARISE FROM A FAILURE TO FULLY INVESTIGATE EXISTING FIELD CONDITIONS.
13.	THE EXISTING TRAFFIC SIGNALS SHALL REMAIN IN OPERATION DURING THE CONSTRUCTION OF THE PROPOSED TRAFFIC SIGNALS.
14.	ANY MAINTENANCE OF EXISTING TRAFFIC SIGNALS WILL BE CONSIDERED EXTRA WORK IN ACCORDANCE WITH ARTICLE 109.04 OF THE STANDARD SPECIFICATIONS.
15.	THE HANDHOLES SHALL BE CONSTRUCTED SO THAT THE TOP OF THE FRAME WILL BE FLUSH WITH THE SURFACE OF THE SHOULDER, ISLAND PAVEMENT, SIDEWALK OR GROUND LINE.
16.	ALL SURPLUS MATERIALS SHALL BE DISPOSED OF IN ACCORDANCE WITH ARTICLE 202.03 OF THE STANDARD SPECIFICATIONS.
17.	COILABLE POLYETHYLENE DUCT MAY BE SUBSTITUTED FOR PVC PUSHED OR TRENCHED.
18.	NO ADDITIONAL COMPENSATION WILL BE ALLOWED FOR PLACING CONDUIT AT GREATER THAN 2 FT. MINIMUM DEPTH TO AVOID OBSTACLES SUCH AS UNDERGROUND UTILITIES.
19.	THE CONTRACTOR IS RESPONSIBLE FOR THE COST OF UNCOVERING OR HAND DIGGING AROUND UTILITIES AS NECESSARY. THIS COST OF THIS WORK SHALL BE INCLUDED IN THE UNIT PRICES FOR THE CONDUITS.
20.	THE CONTRACTOR SHALL FURNISH AND INSTALL GROUT AROUND ALL DRILLED CONDUITS LOCATED INSIDE OF HANDHOLES TO PREVENT WATER AND DIRT INTRUSION INTO THE HANDHOLE. THE COST OF THIS WORK SHALL BE INCLUDED IN THE COST OF "DRILL EXISTING HANDHOLE."
21.	WITHIN THIRTY CALENDAR DAYS AFTER CONTRACT EXECUTION, THE CONTRACTOR SHALL SUBMIT J.U.L.I.E. TICKETS TO HAVE THE UNDERGROUND UTILITIES MARKED AT THE INTERSECTION AND THEN SCHEDULE AN ON-SITE MEETING WITH THE RESIDENT ENGINEER AND IDOT D4 TRAFFIC OPERATIONS TO DETERMINE AND MARK THE EXACT PLACEMENT OF THE PROPOSED TRAFFIC SIGNAL COMPONENTS.
22.	THE CONTRACTOR SHALL RELOCATE THE EXISTING LED LUMINAIRES FROM THE EXISTING MAST ARMS TO THE PROPOSED MAST ARMS. THE CONTRACTOR SHALL FURNISH AND INSTALL NEW SURGE ARRESTORS, FUSES, FUSEHOLDERS, AND POLE WIRING. THE COST OF THIS WORK SHALL BE INCLUDED IN THE BID PRICE FOR "RELOCATE EXISTING LUMINAIRE."
23.	THE CONTRACTOR SHALL FURNISH AND INSTALL ONE 20A 1-POLE CIRCUIT BREAKER, BUTTON PHOTOCCELL, TERMINAL BLOCK WIRING, AND ALL OTHER ITEMS REQUIRED TO PROVIDE POWER TO THE RELOCATED LUMINAIRES. THESE ITEMS SHALL BE INSTALLED IN THE EXISTING TRAFFIC SIGNAL CABINET. ALL LUMINAIRES SHALL BE WIRED TO 120V. THE COST OF THIS WORK SHALL BE INCLUDED IN THE BID PRICE FOR "RELOCATE EXISTING LUMINAIRE."
24.	THE CONTRACTOR SHALL CUT THE ANCHOR BOLTS OF EX. TS-2 FLUSH WITH THE TOP OF CONCRETE FOUNDATION. THIS WORK WILL NOT BE PAID FOR SEPARATELY, BUT SHALL BE INCLUDED IN THE BID PRICE FOR "REMOVE TRAFFIC SIGNAL EQUIPMENT."
25.	THE CONTRACTOR SHALL RELOCATE THE EXISTING MICROWAVE VEHICLE DETECTOR AND DETECTOR CABLE FROM EX. MA-2 TO THE PROPOSED MA-2. THE COST OF THIS WORK WILL NOT BE PAID FOR SEPARATELY, BUT SHALL BE INCLUDED IN THE BID PRICE OF THE PROPOSED MA-2.
26.	THE CONTRACTOR SHALL FURNISH ONE OF THE PROPOSED VIDEO VEHICLE DETECTION CAMERAS AS MATERIAL ONLY. THE CONTRACTOR SHALL DELIVER THE CAMERA, BRACKET, HARDWARE AND CONNECTORS TO THE IDOT TRAFFIC BUILDING AT 1025 W. DETWEILLER DR. PEORIA 61615. THE COST OF THIS WORK SHALL BE INCLUDED IN THE BID PRICE FOR THE PAY ITEM "VIDEO VEHICLE DETECTION SYSTEM, 3 CAMERAS."

MODEL Path: \\S:\CEN\W\W\ORD\ESP\AN\Hanson\# Comp\Fred Contract\13-4-04 Letting\_68J05 IL 29 & Cedar Mill\Map\_Arm\11\_29 & Cedar Mill\_02-27-20.dgn  
 FILE NAME: S:\CEN\W\W\ORD\ESP\AN\Hanson\# Comp\Fred Contract\13-4-04 Letting\_68J05 IL 29 & Cedar Mill\Map\_Arm\11\_29 & Cedar Mill\_02-27-20.dgn

USER NAME = Trevor.Hanson	DESIGNED -	REVISED 02-07-24 TJH
	DRAWN -	REVISED -
PLOT SCALE = 23,8272 * / in.	CHECKED -	REVISED -
PLOT DATE = 2/7/2024	DATE -	REVISED -

**STATE OF ILLINOIS  
DEPARTMENT OF TRANSPORTATION**

**CONSTRUCTION NOTES**

SCALE: SHEET OF SHEETS STA. TO STA.

F.A.P. RTE.	SECTION	COUNTY	TOTAL SHEETS	SHEET NO.
318	(9)TS-1	PEORIA	18	4
			CONTRACT NO. 68J05	
		ILLINOIS FED. AID PROJECT		



SUMMARY OF QUANTITIES

CODE 0021  
80% FEDERAL  
20% STATE  
0% CITY

ITEM NUMBER	ITEM DESCRIPTION	UNIT	TOTAL QTY.	PEORIA CTY.
67100100	MOBILIZATION	L SUM	1.0	1.0
* 72000100	SIGN PANEL - TYPE 1	SQ FT	11.5	11.5
* 72000200	SIGN PANEL - TYPE 2	SQ FT	40.0	40.0
80400100	ELECTRIC SERVICE INSTALLATION	EACH	1.0	1.0
81028350	UNDERGROUND CONDUIT, PVC, 2" DIA.	FOOT	126.0	126.0
81028370	UNDERGROUND CONDUIT, PVC, 3" DIA.	FOOT	276.0	276.0
81400700	HANDHOLE, PORTLAND CEMENT CONCRETE	EACH	1.0	1.0
81702110	ELECTRIC CABLE IN CONDUIT, 600V (XLP-TYPE USE) 1/C NO. 10	FOOT	749.0	749.0
87301225	ELECTRIC CABLE IN CONDUIT, SIGNAL NO. 14 3C	FOOT	363.0	363.0
87301245	ELECTRIC CABLE IN CONDUIT, SIGNAL NO. 14 5C	FOOT	1160.0	1160.0
87301255	ELECTRIC CABLE IN CONDUIT, SIGNAL NO. 14 7C	FOOT	733.5	733.5
87301900	ELECTRIC CABLE IN CONDUIT, EQUIPMENT GROUNDING CONDUCTOR, NO. 6 1C	FOOT	524.5	524.5
87502480	TRAFFIC SIGNAL POST, GALVANIZED STEEL 14 FT.	EACH	1.0	1.0
87502500	TRAFFIC SIGNAL POST, GALVANIZED STEEL 16 FT.	EACH	2.0	2.0
87502510	TRAFFIC SIGNAL POST, GALVANIZED STEEL 17 FT.	EACH	1.0	1.0
87702970	STEEL COMBINATION MAST ARM ASSEMBLY AND POLE 48 FT.	EACH	2.0	2.0
87800100	CONCRETE FOUNDATION, TYPE A	FOOT	9.0	9.0

MODEL Path: \\S:\CEN\W\W\ORD\ESP\AN\Hanson# 68J05 IL 29 & Cedar Hill# 102-01-241.dgn

USER NAME = Trevor.Hanson	DESIGNED -	REVISED -
PLOT SCALE = 23,8272 * / in.	DRAWN -	REVISED -
PLOT DATE = 2/1/2024	CHECKED -	REVISED -
	DATE -	REVISED -

STATE OF ILLINOIS  
DEPARTMENT OF TRANSPORTATION

SUMMARY OF QUANTITIES

SCALE: SHEET OF SHEETS STA. TO STA.

F.A.P. RTE.	SECTION	COUNTY	TOTAL SHEETS	SHEET NO.
318	(9)TS-1	PEORIA	18	5
ILLINOIS FED. AID PROJECT			CONTRACT NO. 68J05	



F.A.P. RTE.	SECTION	COUNTY	TOTAL SHEETS	SHEET NO.
63	9,TS	PEORIA	26	12
STA.	TO STA.			
POL. ROAD DIST. NO.	ALIGNED	POL. AND PROJECT		

**SCHEDULE OF SIGNAL HEAD QUANTITIES**

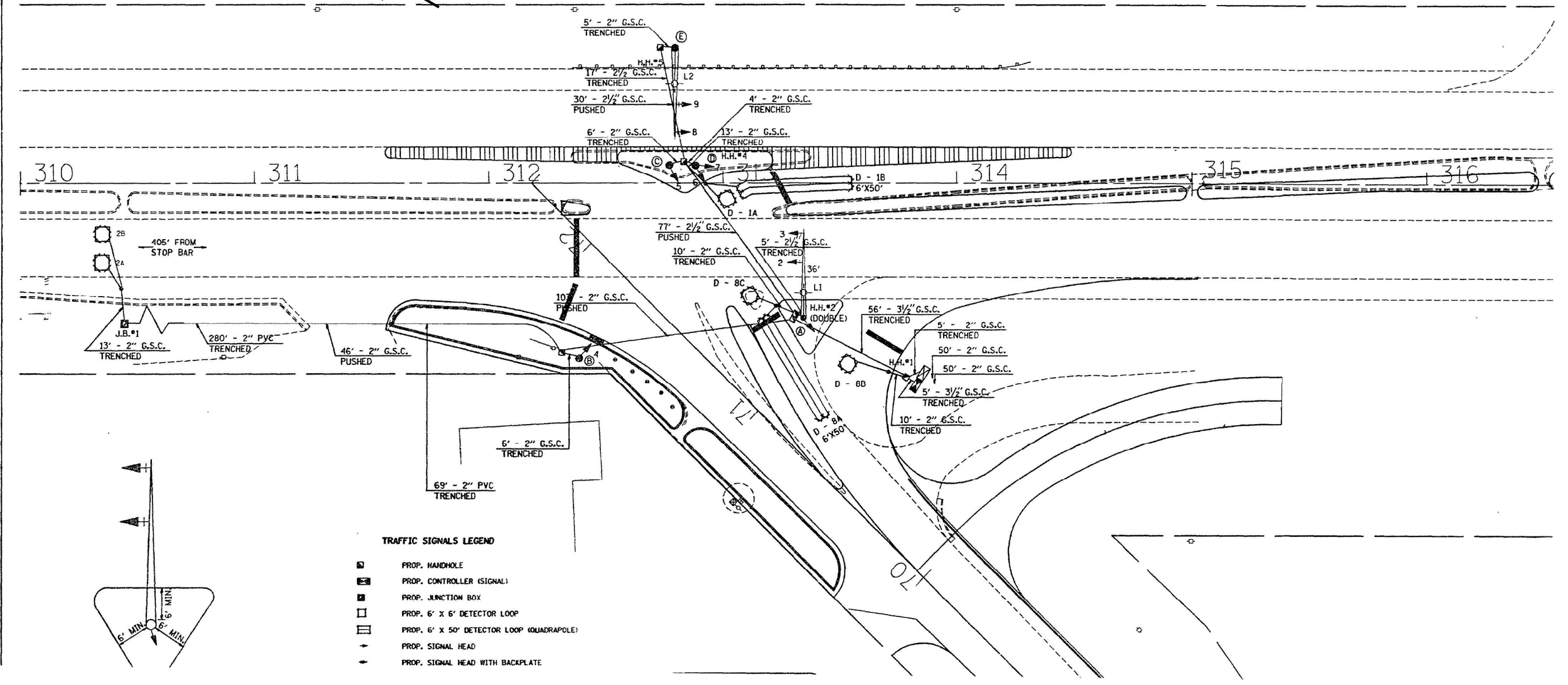
TOTAL QUANTITY	UNIT	ITEM	LOCATION
2	EACH	SIGNAL HEAD, ALUM. 1F, 1S MAM	8,9
2	EACH	SIGNAL HEAD, ALUM. 1F, 3S MAM	2,3
1	EACH	OPTICALLY PROGRAMMED SIGNAL HEAD 4	
1	EACH	COMBINATION SIGNAL HEAD, 2 FACE	6,7
		* 1-5 SECTION OPTICALLY PROGRAMMED	
		* 1-3 SECTION BRACKET MOUNTED	
1	EACH	SIGNAL HEAD, ALUMINUM, 1F, 3S, BM	5
1	EACH	SIGNAL HEAD, ALUMINUM, 1F, 5S, BM	1

\* OPTICALLY PROGRAMMED SIGNAL HEADS WILL BE SUPPLIED BY THE STATE, AND SHALL BE PICKED UP AT 5826 N. KNOXVILLE AVE.

**CONSTRUCTION NOTES**

- ALL DETECTOR LOOPS SHALL BE LOCATED IN THE CENTER OF THEIR RESPECTIVE LANES. THE BUREAU OF TRAFFIC SHALL BE NOTIFIED TO VERIFY PROPOSED LOOP LOCATIONS BEFORE THEY ARE CUT.
- THE PROPOSED DETECTOR LOOPS SHALL BE CUT IN THE EXISTING PAVEMENT OR PROPOSED BINDER COURSE BEFORE THE FINAL OVERLAY. THIS RISER AREA SHALL THEN BE CHIPPED OUT AND FILLED WITH EPOXY. THIS WORK SHALL BE INCLUDED IN THE BID PRICE FOR DETECTOR LOOP.
- THE PROPOSED MAST ARM MOUNTED TRAFFIC SIGNAL HEADS SHALL BE MOUNTED DIRECTLY OVER THE CENTER OF THEIR RESPECTIVE LANES.

**FOR INFORMATION ONLY**



**TRAFFIC SIGNALS LEGEND**

	PROP. HANDHOLE
	PROP. CONTROLLER (SIGNAL)
	PROP. JUNCTION BOX
	PROP. 6' x 6' DETECTOR LOOP
	PROP. 6' x 50' DETECTOR LOOP (QUADRANGLE)
	PROP. SIGNAL HEAD
	PROP. SIGNAL HEAD WITH BACKPLATE

MODEL: D:\p\h\... FILE NAME: S:\CEN\W\W\ORD\ESP\AN\Hanson.dwg 6/30/05 11:29 & Cedar Hills 02-01-24.dwg

USER NAME = Trevor.Hanson	DESIGNED -	REVISED -
PLOT SCALE = 23,8272 */ in.	DRAWN -	REVISED -
PLOT DATE = 2/1/2024	CHECKED -	REVISED -
	DATE -	REVISED -

**STATE OF ILLINOIS  
DEPARTMENT OF TRANSPORTATION**

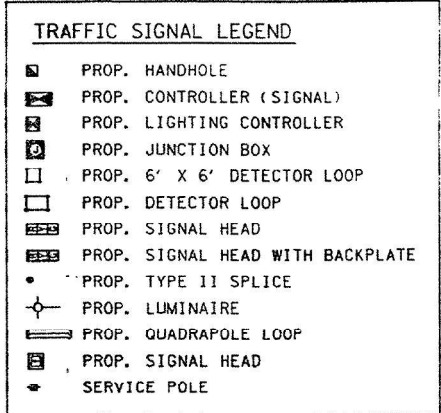
<b>EXISTING TRAFFIC SIGNAL PLANS</b>			
SCALE:	SHEET	OF	SHEETS
	STA.		TO STA.

F.A.P. RTE.	SECTION	COUNTY	TOTAL SHEETS	SHEET NO.
318	(9)TS-1	PEORIA	18	7
CONTRACT NO. 68J05				
ILLINOIS FED. AID PROJECT				



F.A.P. NO.	SECTION	COUNTY	TOTAL SHEETS	SHEET NO.
63	9, TS	PEORIA	26	13
STA.		TO STA.		
FED. ROAD DIST. NO.		ALLEN		FED. AID PROJECT

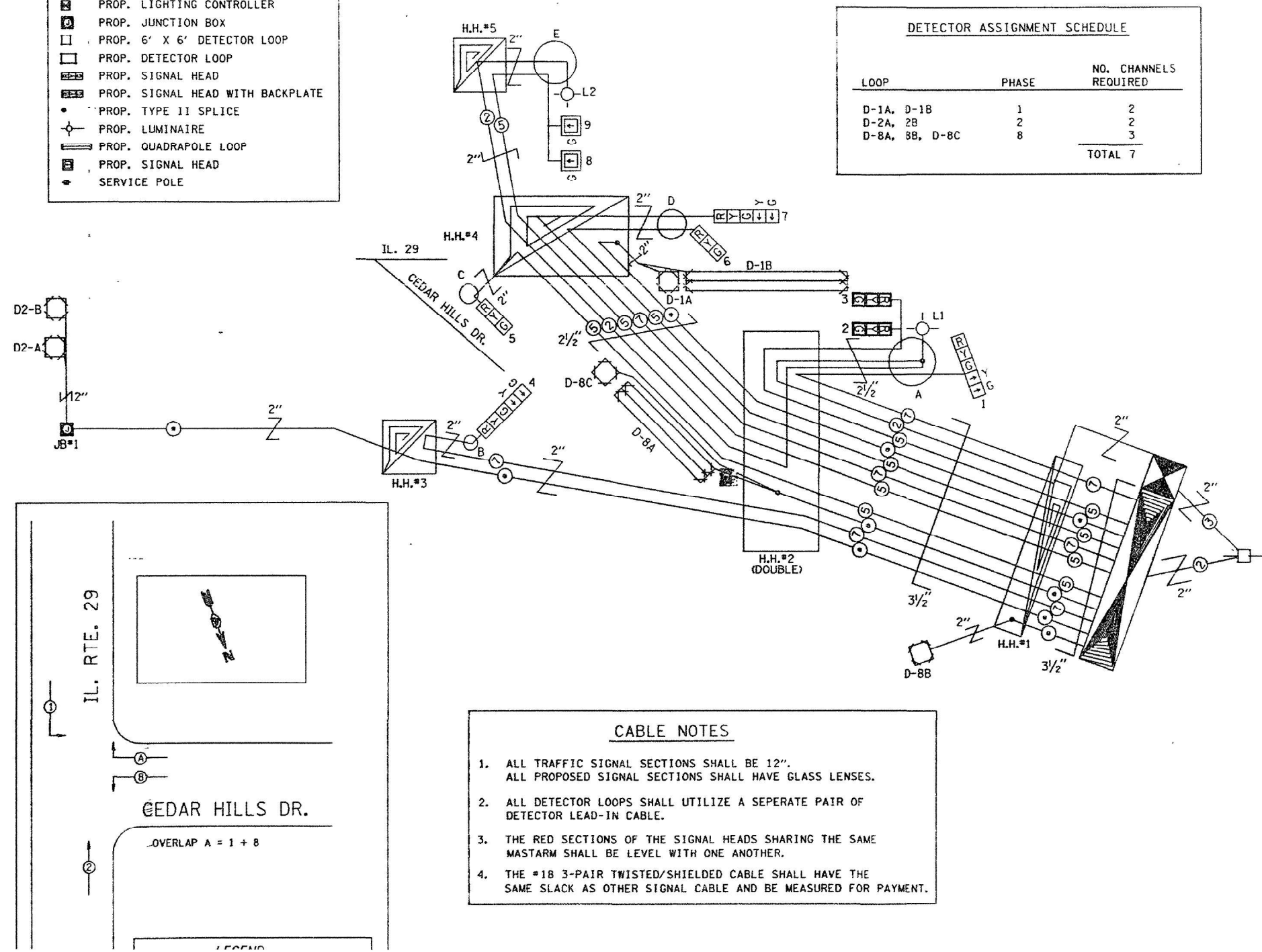
ITEM	UNIT	QUANTITY
LUMINAIRE, SODIUM VAPOR, HORIZONTAL MOUNT, 250 WATT	EACH	2
SERVICE INSTALLATION PHOTOCCELL RELAY	EACH	1
SIGNAL HEAD, ALUMINUM, 1-FACE, 3-SECTION, BRACKET MOUNTED	EACH	1
SIGNAL HEAD, ALUMINUM, 1-FACE, 3-SECTION, MAST ARM MOUNTED	EACH	2
SIGNAL HEAD, ALUMINUM, 1-FACE, 5-SECTION, BRACKET MOUNTED	EACH	1
SIGNAL HEAD, ALUMINUM, 1-FACE, 1-SECTION, MAST ARM MOUNTED	EACH	2
OPTICALLY PROGRAMMED SIGNAL HEAD, 1-FACE, 5-SECTION, BRACKET MOUNTED	EACH	1
COMBINATION SIGNAL HEAD, 2-FACE, 1-5 SECTION OPTICALLY PROGRAMMED, 1-3 SECTION, BRACKET MOUNTED	EACH	1
TRAFFIC SIGNAL BACKPLATE	EACH	7
TRAFFIC SIGNAL POST, 14 FT.	EACH	3
STEEL COMBINATION MAST ARM ASSEMBLY AND POLE 36 FT.	EACH	2
FULL-ACTUATED CONTROLLER, STANDARD SEQUENCE IV, 4 PHASES, IN TYPE IV CABINET	EACH	1
INDUCTION LOOP DETECTOR AMPLIFIER	EACH	7
DETECTOR LOOP, TYPE I	LIN FT	544
GALVANIZED STEEL CONDUIT IN TRENCH 2"	LIN FT	200
GALVANIZED STEEL CONDUIT IN TRENCH 2 1/2"	LIN FT	22
GALVANIZED STEEL CONDUIT IN TRENCH 3 1/2"	LIN FT	61
GALVANIZED STEEL CONDUIT, PUSHED 2"	LIN FT	149
GALVANIZED STEEL CONDUIT, PUSHED 2 1/2"	LIN FT	107
PVC CONDUIT IN TRENCH 2"	LIN FT	349
ELECTRIC CABLE IN CONDUIT NO. 6 2/C	LIN FT	50
ELECTRIC CABLE IN CONDUIT NO. 6 3/C	LIN FT	50
ELECTRIC CABLE IN CONDUIT NO. 12 1/C	LIN FT	212
ELECTRIC CABLE IN CONDUIT NO. 14 5/C	LIN FT	698
ELECTRIC CABLE IN CONDUIT NO. 14 7/C	LIN FT	435
ELECTRIC CABLE IN CONDUIT NO. 18, 3 PAIR TWISTED, SHIELDED	LIN FT	827
SERVICE INSTALLATION, TYPE B	EACH	1
CONCRETE FOUNDATION, TYPE A	LIN FT	9
CONCRETE FOUNDATION, TYPE D	LIN FT	5.5
CONCRETE FOUNDATION, TYPE E 30-INCH DIAMETER	LIN FT	24



**FOR INFORMATION ONLY**

**DETECTOR ASSIGNMENT SCHEDULE**

LOOP	PHASE	NO. CHANNELS REQUIRED
D-1A, D-1B	1	2
D-2A, 2B	2	2
D-8A, 8B, D-8C	8	3
<b>TOTAL</b>		<b>7</b>



- CABLE NOTES**
- ALL TRAFFIC SIGNAL SECTIONS SHALL BE 12". ALL PROPOSED SIGNAL SECTIONS SHALL HAVE GLASS LENSES.
  - ALL DETECTOR LOOPS SHALL UTILIZE A SEPERATE PAIR OF DETECTOR LEAD-IN CABLE.
  - THE RED SECTIONS OF THE SIGNAL HEADS SHARING THE SAME MASTARM SHALL BE LEVEL WITH ONE ANOTHER.
  - THE #18 3-PAIR TWISTED/SHIELDED CABLE SHALL HAVE THE SAME SLACK AS OTHER SIGNAL CABLE AND BE MEASURED FOR PAYMENT.

MODEL PATH: S:\CEN\W\ORD\DESIGN\AN\Hanson\63005\_IL\_29\_Cedar\_Hills\_02-01-24.dgn

USER NAME = Trevor.Hanson	DESIGNED -	REVISED -
PLOT SCALE = 23,8272 */ in.	DRAWN -	REVISED -
PLOT DATE = 2/1/2024	CHECKED -	REVISED -
	DATE -	REVISED -

**STATE OF ILLINOIS  
DEPARTMENT OF TRANSPORTATION**

**EXISTING TRAFFIC SIGNAL PLANS - CONTINUED**

SCALE: SHEET OF SHEETS STA. TO STA.

F.A.P. RTE.	SECTION	COUNTY	TOTAL SHEETS	SHEET NO.
318	(9)TS-1	PEORIA	18	8
CONTRACT NO. 68J05				
ILLINOIS FED. AID PROJECT				



"R" INDICATES ITEM TO BE RELOCATED  
 "X" INDICATES ITEM TO BE REMOVED

THE FOLLOWING ITEMS SHALL BE RELOCATED AS SHOWN IN THE PLANS. THE COST OF THIS WORK SHALL BE INCLUDED IN THE BID PRICES OF THE PROPOSED MAST ARMS:

QTY.	ITEM DESCRIPTION
1.0	MICROWAVE VEHICLE DETECTOR AND MOUNTING HARDWARE
ALL	MICROWAVE VEHICLE DETECTOR CABLING

- NOTES:
1. THE CONTRACTOR SHALL CUT THE ANCHOR BOLTS OF EX. TS-2 FLUSH WITH THE TOP OF CONCRETE FOUNDATION. THIS WORK WILL NOT BE PAID FOR SEPARATELY, BUT SHALL BE INCLUDED IN THE BID PRICE FOR "REMOVE TRAFFIC SIGNAL EQUIPMENT."
  2. THE CONTRACTOR SHALL RELOCATE THE EXISTING MICROWAVE VEHICLE DETECTOR AND DETECTOR CABLE FROM EX. MA-2 TO THE PROPOSED MA-2. THE COST OF THIS WORK WILL NOT BE PAID FOR SEPARATELY, BUT SHALL BE INCLUDED IN THE BID PRICE OF THE PROPOSED MA-2.
  3. THE CONTRACTOR SHALL RELOCATE THE EXISTING LED LUMINAIRES FROM THE EXISTING MAST ARMS TO THE PROPOSED MAST ARMS. THE CONTRACTOR SHALL FURNISH AND INSTALL NEW SURGE ARRESTORS, FUSES, FUSEHOLDERS, AND POLE WIRING. THE COST OF THIS WORK SHALL BE INCLUDED IN THE BID PRICE FOR "RELOCATE EXISTING LUMINAIRE."
  4. THE CONTRACTOR SHALL REMOVE THE EXISTING CONCRETE FOUNDATIONS FOR MA-1, TS-1, AND TS-3 IN ACCORDANCE WITH ARTICLE 895.05 OF THE STANDARD SPECIFICATIONS. THE COST OF THIS WORK SHALL BE INCLUDED IN THE BID PRICE FOR "REMOVE EXISTING CONCRETE FOUNDATION."

LEGEND

	EX. TS CONTROLLER CABINET
	EX. DOUBLE HANDHOLE
	EX. HANDHOLE
	EX. SIGNAL HEAD (WITH BACKPLATE)
	EX. SIGNAL HEAD (WITHOUT BACKPLATE)
	EX. BATTERY BACKUP SYSTEM
	EX. COMBINATION MAST ARM ASSEMBLY AND POLE
	EX. TRAFFIC SIGNAL POST
	EX. LUMINAIRE
	EX. CONDUIT
	EX. CCTV CAMERA
	EX. MICROWAVE VEHICLE DETECTOR
	EX. QUADRAPOLE DETECTOR LOOP
	EX. DETECTOR LOOP
	EX. LIGHTING CONTROLLER
	EX. ELECTRIC SERVICE
	EX. WOOD POLE

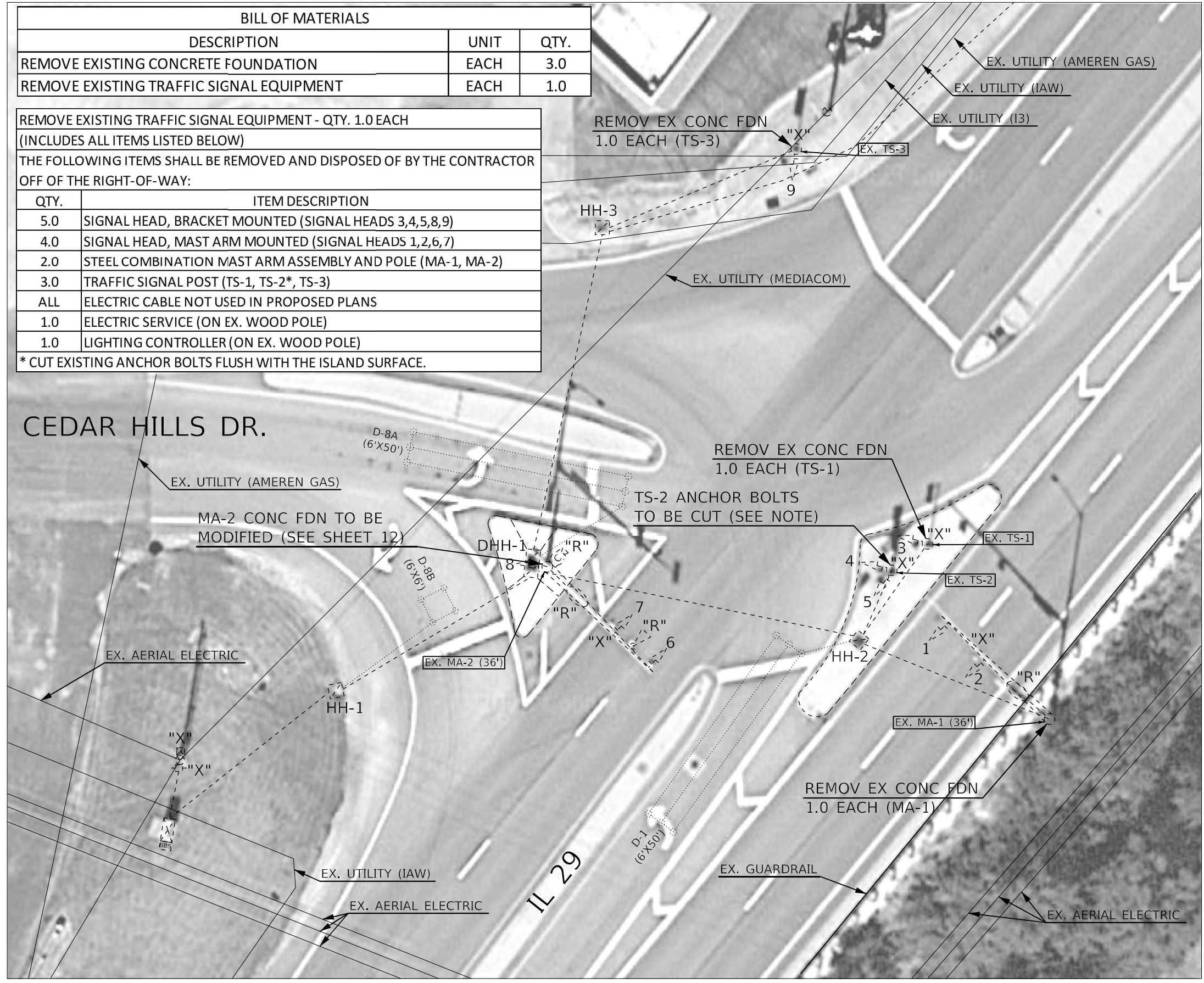
NOT TO SCALE

BILL OF MATERIALS		
DESCRIPTION	UNIT	QTY.
REMOVE EXISTING CONCRETE FOUNDATION	EACH	3.0
REMOVE EXISTING TRAFFIC SIGNAL EQUIPMENT	EACH	1.0

REMOVE EXISTING TRAFFIC SIGNAL EQUIPMENT - QTY. 1.0 EACH  
 (INCLUDES ALL ITEMS LISTED BELOW)  
 THE FOLLOWING ITEMS SHALL BE REMOVED AND DISPOSED OF BY THE CONTRACTOR OFF OF THE RIGHT-OF-WAY:

QTY.	ITEM DESCRIPTION
5.0	SIGNAL HEAD, BRACKET MOUNTED (SIGNAL HEADS 3,4,5,8,9)
4.0	SIGNAL HEAD, MAST ARM MOUNTED (SIGNAL HEADS 1,2,6,7)
2.0	STEEL COMBINATION MAST ARM ASSEMBLY AND POLE (MA-1, MA-2)
3.0	TRAFFIC SIGNAL POST (TS-1, TS-2*, TS-3)
ALL	ELECTRIC CABLE NOT USED IN PROPOSED PLANS
1.0	ELECTRIC SERVICE (ON EX. WOOD POLE)
1.0	LIGHTING CONTROLLER (ON EX. WOOD POLE)

\* CUT EXISTING ANCHOR BOLTS FLUSH WITH THE ISLAND SURFACE.



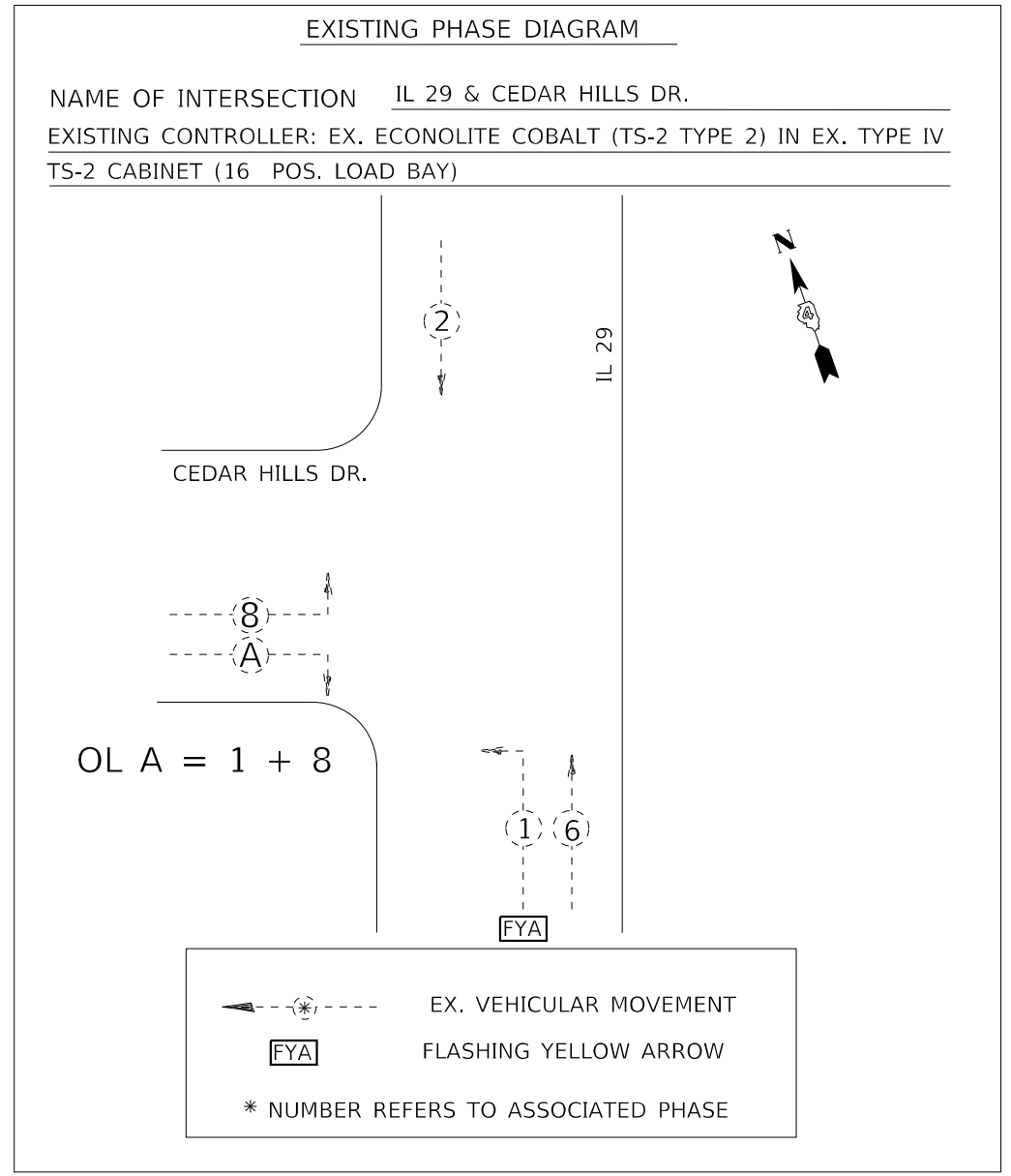
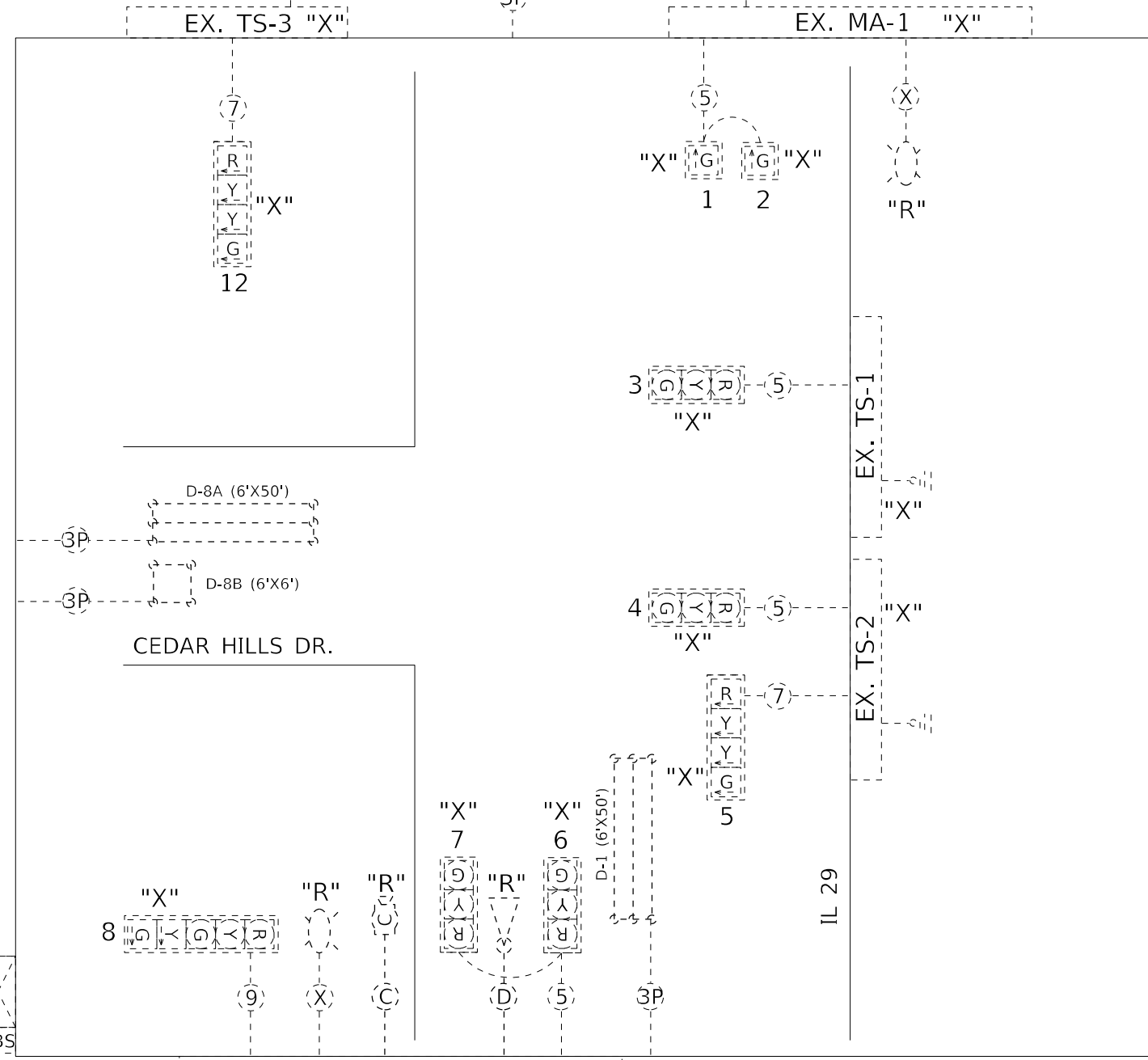
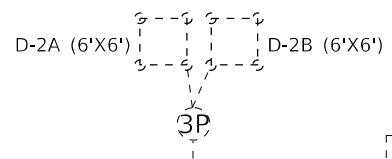
MODEL Path: \\S:\CEN\W\W\ORD\DESIGN\AN\Hanson\68105 IL 29 & Cedar Hills\11111 29 & Cedar Hills 102-01-241.dgn  
 FILE NAME: S:\CEN\W\W\ORD\DESIGN\AN\Hanson\68105 IL 29 & Cedar Hills\11111 29 & Cedar Hills 102-01-241.dgn

USER NAME = Trevor.Hanson	DESIGNED -	REVISED -
PLOT SCALE = 23,8272 * / in.	DRAWN -	REVISED -
PLOT DATE = 2/1/2024	CHECKED -	REVISED -
	DATE -	REVISED -

STATE OF ILLINOIS  
 DEPARTMENT OF TRANSPORTATION

EXISTING TRAFFIC SIGNAL PLANS & REMOVAL ITEMS	
SCALE:	SHEET OF SHEETS STA. TO STA.

F.A.P. RTE.	SECTION	COUNTY	TOTAL SHEETS	SHEET NO.
318	(9)TS-1	PEORIA	18	9
CONTRACT NO. 68J05				
ILLINOIS FED. AID PROJECT				



"R" INDICATES ITEM TO BE RELOCATED  
 "X" INDICATES ITEM TO BE REMOVED

TRAFFIC SIGNALS LEGEND

- |  |                                       |  |  |  |                              |
|--|---------------------------------------|--|--|--|------------------------------|
|  | EX. TRAFFIC SIGNAL CONTROLLER CABINET |  | EX. 3 SEC. SIGNAL HEAD WITH BACKPLATE      |  | EX. 5/C NO. 14 SIGNAL CABLE  |
|  | EX. BATTERY BACKUP SYSTEM             |  | EX. 3 SEC. SIGNAL HEAD WITHOUT BACKPLATE   |  | EX. 7/C NO. 14 SIGNAL CABLE  |
|  | EX. ELECTRIC SERVICE                  |  | EX. ROADWAY LUMINAIRE (RELOCATED)          |  | EX. 1/C NO. 6 CABLE          |
|  | EX. GROUND/SAFETY BOND                |  | EX. CCTV CAMERA                            |  | EX. CAT 5 ETHERNET CABLE     |
|  | EX. QUADRAPOLE DETECTOR LOOP          |  | EX. MICROWAVE VEHICLE DETECTOR (RELOCATED) |  | EX. MICROWAVE DETECTOR CABLE |
|  | EX. DETECTOR LOOP                     |  | EX. LIGHTING CONTROLLER                    |  |                              |

MODEL: D:\p\h\...  
 FILE NAME: S:\CEN\W\W\ORD\ESP\AN\Hanson# 68J05 IL 29 & Cedar Hills 02-01-24.dgn

NOT TO SCALE

USER NAME = Trevor.Hanson	DESIGNED -	REVISED -
DRAWN -	REVISOR -	REVISOR -
PLOT SCALE = 23,8272 * / in.	CHECKED -	REVISOR -
PLOT DATE = 2/1/2024	DATE -	REVISOR -

STATE OF ILLINOIS  
 DEPARTMENT OF TRANSPORTATION

EXISTING CIRCUIT AND PHASE DIAGRAMS

SCALE: SHEET OF SHEETS STA. TO STA.

F.A.P. RTE. 318	SECTION (9)TS-1	COUNTY PEORIA	TOTAL SHEETS 18	SHEET NO. 10
CONTRACT NO. 68J05				
ILLINOIS FED. AID PROJECT				



TRAFFIC SIGNAL HEAD SCHEDULE			
PROP. QTY.	UNIT	ITEM	LOCATION
2.0	EACH	SH P LED 1F 1S MAM	2,3
3.0	EACH	SH P LED 1F 3S BM	4,5,11
3.0	EACH	SH P LED 1F 3S MAM	1,7,8
2.0	EACH	SH P LED 1F 4S BM	6,12
2.0	EACH	SH P LED 1F 5S BM	9,10
12.0	EACH	TS BACKPLATE RET-REFL	1,2,3,4,5,6,7,8,9,10,11,12

HANDHOLE SCHEDULE						
NAME	TYPE	LOCATION	HANDHOLE PCC	DRILL EX. HANDHOLE	REPLACE HH COVER	NOTES
			QTY.	QTY.	QTY.	
DHH-1	EX. DOUBLE	SW CORNER ISLAND		1.0	2.0	
HH-1	EX. SINGLE	SW QUADRANT		2.0	1.0	
HH-2	EX. SINGLE	CENTER MEDIAN				ABANDON IN PLACE
HH-3	EX. SINGLE	NW QUADRANT				ABANDON IN PLACE
HH-4	PROP. SINGLE	CENTER MEDIAN	1.0			
TOTAL			1.0	3.0	3.0	

MAST ARM AND TRAFFIC SIGNAL POST SCHEDULE						
NAME	DESCRIPTION	LENGTH (FT.)	PROPOSED FOUNDATION			LOCATION
			DIAMETER	TYPE	DEPTH	
MA-1	STL COMB MAA&P	48.0	36 INCH	TYPE E	13.0 FT.	NE QUADRANT, BEHIND GUARDRAIL
MA-2	STL COMB MAA&P	48.0	36 INCH	TYPE E	13.0 FT.	SW QUADRANT
TS-1	TS POST GALVS	14.0	24 INCH	TYPE A	3.0 FT.	CENTER MEDIAN
TS-2	TS POST GALVS	16.0	24 INCH	TYPE A	3.0 FT.	CENTER MEDIAN
TS-3	TS POST GALVS	17.0	PROP. MODIFIED CONCRETE FOUNDATION			SW CORNER ISLAND
TS-4	TS POST GALVS	16.0	24 INCH	TYPE A	3.0 FT.	NW QUADRANT

SIGN SCHEDULE						
DESCRIPTION	SIGN PANEL TYPE	SIGN PANEL WIDTH (IN.)	SIGN PANEL HEIGHT (IN.)	SIGN PANEL (SQ FT.)	SIGN PANEL QTY.	LOCATION
FLASHING YELLOW ARROW	1	24.0	30.0	5.0	1.0	PROP. TS-2
ILLINOIS ROUTE 29 SIGN	1	24.0	24.0	4.0	1.0	PROP. TS-3
M6-4 SIGN (WHITE AND BLACK)	1	24.0	15.0	2.5	1.0	PROP. TS-3
CEDAR HILLS DR.	2	120.0	24.0	20.0	2.0	PROP. MA-1, MA-2
ALL OTHER EX. SIGNS TO BE RELOCATED TO PROP. MAST ARMS						
TOTAL QTY. TYPE 1		11.5				
TOTAL QTY. TYPE 2		40.0				

MODEL PATH: S:\CEN\W\ORD\ESP\AN\Hanson# 6805 IL 29 & Cedar Hills 02-01-24.dgn

USER NAME = Trevor.Hanson	DESIGNED -	REVISED -
	DRAWN -	REVISED -
PLOT SCALE = 23,8272 * / in.	CHECKED -	REVISED -
PLOT DATE = 2/1/2024	DATE -	REVISED -

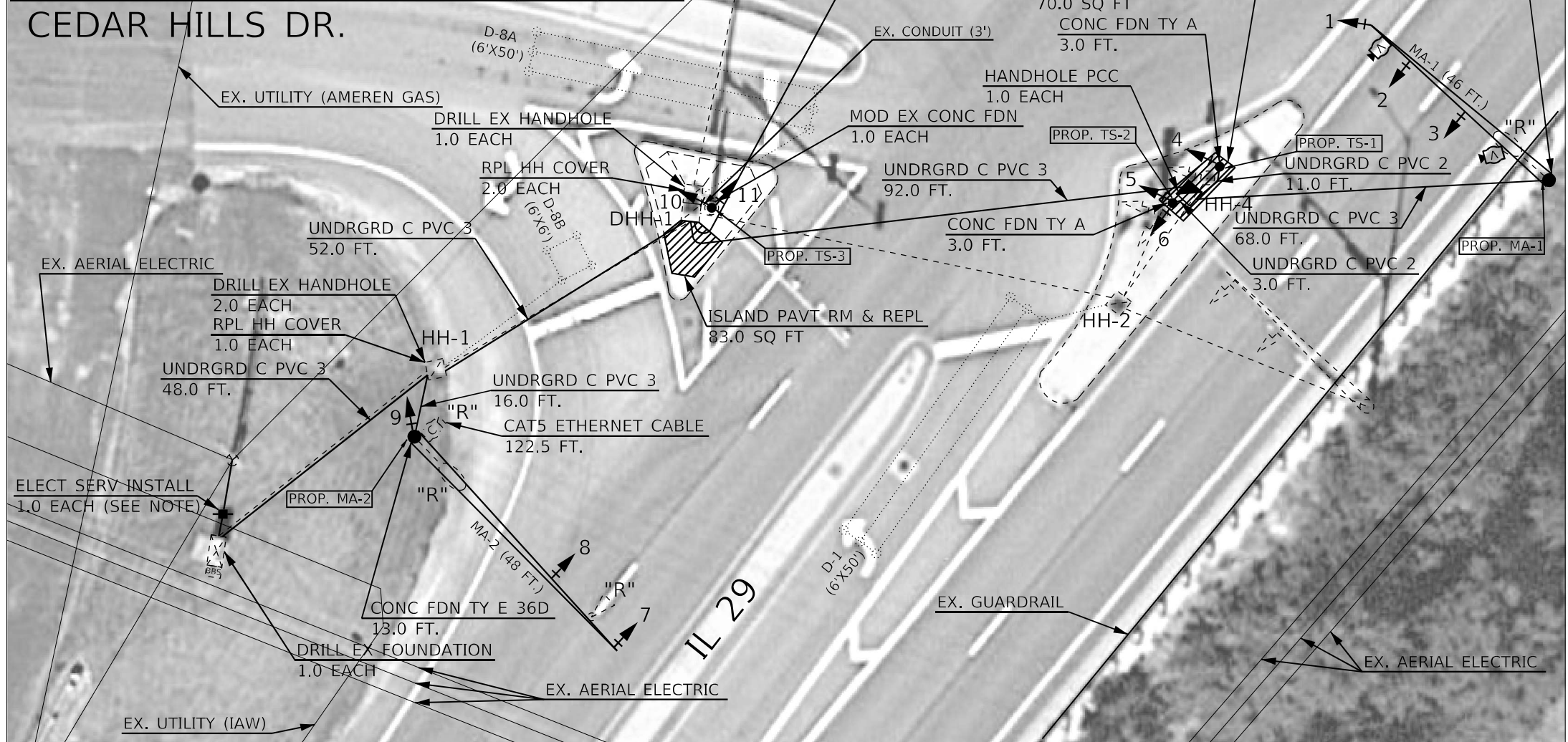
**STATE OF ILLINOIS  
DEPARTMENT OF TRANSPORTATION**

**PROPOSED TRAFFIC SIGNAL SCHEDULES**

SCALE: SHEET OF SHEETS STA. TO STA.

F.A.P. RTE.	SECTION	COUNTY	TOTAL SHEETS	SHEET NO.
318	(9)TS-1	PEORIA	18	11
CONTRACT NO.				
ILLINOIS FED. AID PROJECT				

BILL OF MATERIALS		
DESCRIPTION	UNIT	QTY.
ELECTRIC SERVICE INSTALLATION	EACH	1.0
UNDERGROUND CONDUIT, PVC, 2" DIA.	FOOT	126.0
UNDERGROUND CONDUIT, PVC, 3" DIA.	FOOT	276.0
HANDHOLE, PORTLAND CEMENT CONCRETE	EACH	1.0
ELECTRIC CABLE IN CONDUIT, 600V (XLP-TYPE USE) 1/C NO. 10	FOOT	749.0
ELECTRIC CABLE IN CONDUIT, SIGNAL NO. 14 3C	FOOT	363.0
ELECTRIC CABLE IN CONDUIT, SIGNAL NO. 14 5C	FOOT	1160.0
ELECTRIC CABLE IN CONDUIT, SIGNAL NO. 14 7C	FOOT	733.5
ELECTRIC CABLE IN CONDUIT, EQUIPMENT GROUNDING CONDUCTOR, NO. 6 1C	FOOT	524.5
CONCRETE FOUNDATION, TYPE A	FOOT	9.0
CONCRETE FOUNDATION, TYPE E 36-INCH DIAMETER	FOOT	26.0
DRILL EXISTING FOUNDATION	EACH	1.0
DRILL EXISTING HANDHOLE	EACH	3.0
MODIFY EXISTING CONCRETE FOUNDATION	EACH	1.0
CAT 5 ETHERNET CABLE	FOOT	122.5
ISLAND PAVEMENT REMOVAL AND REPLACEMENT	SQ FT	188.0
REPLACE HANDHOLE COVER	EACH	3.0



LEGEND	
[Symbol]	EX. TS CONTROLLER CABINET
[Symbol]	EX. DOUBLE HANDHOLE
[Symbol]	EX. HANDHOLE
[Symbol]	EX. SIGNAL HEAD (WITH BACKPLATE)
[Symbol]	EX. SIGNAL HEAD (WITHOUT BACKPLATE)
[Symbol]	EX. BATTERY BACKUP SYSTEM
[Symbol]	EX. LUMINAIRE (RELOCATED)
[Symbol]	EX. CONDUIT
[Symbol]	EX. MICROWAVE VEHICLE DETECTOR (RELOCATED)
[Symbol]	EX. QUADRAPOLE DETECTOR LOOP
[Symbol]	EX. DETECTOR LOOP
[Symbol]	EX. WOOD POLE
[Symbol]	EX. CCTV CAMERA (RELOCATED)
[Symbol]	PROP. HANDHOLE
[Symbol]	PROP. SIGNAL HEAD (WITH BACKPLATE)
[Symbol]	PROP. COMBINATION MAST ARM ASSEMBLY AND POLE
[Symbol]	PROP. TRAFFIC SIGNAL POST
[Symbol]	PROP. CONDUIT
[Symbol]	PROP. ELECTRIC SERVICE
[Symbol]	PROP. VIDEO VEHICLE DETECTION CAMERA

"R" INDICATES ITEM TO BE RELOCATED

- NOTES:
1. THE CONTRACTOR SHALL FURNISH AND INSTALL CONDUIT AND SERVICE CONDUCTORS TO THE EXISTING CONTROLLER CABINET SIZED AS NEEDED AND ACCORDING TO UTILITY COMPANY REQUIREMENTS. THE COST OF THIS WORK SHALL BE INCLUDED IN THE BID PRICE OF THE "ELECTRIC SERVICE INSTALLATION." SEE ELECTRIC SERVICE INSTALLATION DETAIL.

NOT TO SCALE

MODEL: D:\p\h\... FILE NAME: S:\CEN\W\W\ORD\ESP\AN\Hanson# 68105 IL 29 & Cedar Hills 102-01-241.dgn

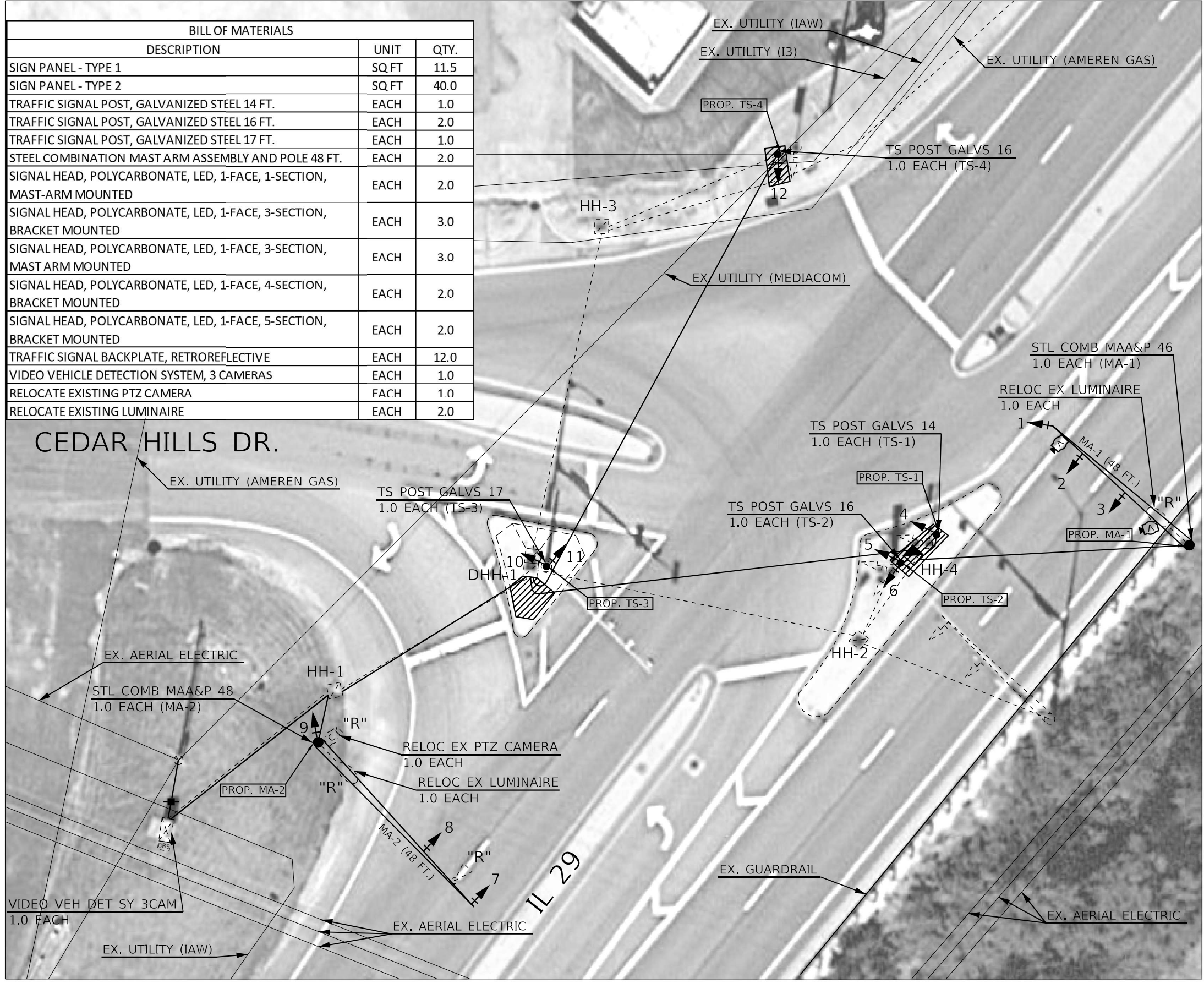
USER NAME = Trevor.Hanson	DESIGNED -	REVISED -
PLOT SCALE = 23,8272 * / in.	DRAWN -	REVISED -
PLOT DATE = 2/1/2024	CHECKED -	REVISED -
	DATE -	REVISED -

STATE OF ILLINOIS  
DEPARTMENT OF TRANSPORTATION

PROPOSED TRAFFIC SIGNAL PLANS (AT AND BELOW GRADE)

SCALE: SHEET OF SHEETS STA. TO STA.

F.A.P. RTE.	SECTION	COUNTY	TOTAL SHEETS	SHEET NO.
318	(9)TS-1	PEORIA	18	12
CONTRACT NO. 68J05				
ILLINOIS FED. AID PROJECT				



BILL OF MATERIALS		
DESCRIPTION	UNIT	QTY.
SIGN PANEL - TYPE 1	SQ FT	11.5
SIGN PANEL - TYPE 2	SQ FT	40.0
TRAFFIC SIGNAL POST, GALVANIZED STEEL 14 FT.	EACH	1.0
TRAFFIC SIGNAL POST, GALVANIZED STEEL 16 FT.	EACH	2.0
TRAFFIC SIGNAL POST, GALVANIZED STEEL 17 FT.	EACH	1.0
STEEL COMBINATION MAST ARM ASSEMBLY AND POLE 48 FT.	EACH	2.0
SIGNAL HEAD, POLYCARBONATE, LED, 1-FACE, 1-SECTION, MAST-ARM MOUNTED	EACH	2.0
SIGNAL HEAD, POLYCARBONATE, LED, 1-FACE, 3-SECTION, BRACKET MOUNTED	EACH	3.0
SIGNAL HEAD, POLYCARBONATE, LED, 1-FACE, 3-SECTION, MAST ARM MOUNTED	EACH	3.0
SIGNAL HEAD, POLYCARBONATE, LED, 1-FACE, 4-SECTION, BRACKET MOUNTED	EACH	2.0
SIGNAL HEAD, POLYCARBONATE, LED, 1-FACE, 5-SECTION, BRACKET MOUNTED	EACH	2.0
TRAFFIC SIGNAL BACKPLATE, RETROREFLECTIVE	EACH	12.0
VIDEO VEHICLE DETECTION SYSTEM, 3 CAMERAS	EACH	1.0
RELOCATE EXISTING PTZ CAMERA	EACH	1.0
RELOCATE EXISTING LUMINAIRE	EACH	2.0

**CEDAR HILLS DR.**

**IL 29**



LEGEND	
	EX. TS CONTROLLER CABINET
	EX. DOUBLE HANDHOLE
	EX. HANDHOLE
	EX. SIGNAL HEAD (WITH BACKPLATE)
	EX. SIGNAL HEAD (WITHOUT BACKPLATE)
	EX. BATTERY BACKUP SYSTEM
	EX. LUMINAIRE (RELOCATED)
	EX. CONDUIT
	EX. MICROWAVE VEHICLE DETECTOR (RELOCATED)
	EX. QUADRAPOLE DETECTOR LOOP
	EX. DETECTOR LOOP
	EX. WOOD POLE
	EX. CCTV CAMERA (RELOCATED)
	PROP. HANDHOLE
	PROP. SIGNAL HEAD (WITH BACKPLATE)
	PROP. COMBINATION MAST ARM ASSEMBLY AND POLE
	PROP. TRAFFIC SIGNAL POST
	PROP. CONDUIT
	PROP. ELECTRIC SERVICE
	PROP. VIDEO VEHICLE DETECTION CAMERA

"R" INDICATES ITEM TO BE RELOCATED

- NOTES:
1. THE CONTRACTOR SHALL RELOCATE THE EXISTING MICROWAVE VEHICLE DETECTOR AND DETECTOR CABLE FROM EX. MA-2 TO THE PROPOSED MA-2. THE COST OF THIS WORK WILL NOT BE PAID FOR SEPARATELY, BUT SHALL BE INCLUDED IN THE BID PRICE OF THE PROPOSED MA-2.
  2. THE CONTRACTOR SHALL RELOCATE THE EXISTING LED LUMINAIRES FROM THE EXISTING MAST ARMS TO THE PROPOSED MAST ARMS. THE CONTRACTOR SHALL FURNISH AND INSTALL NEW SURGE ARRESTORS, FUSES, FUSEHOLDERS, AND POLE WIRING. THE COST OF THIS WORK SHALL BE INCLUDED IN THE BID PRICE FOR "RELOCATE EXISTING LUMINAIRE."
  3. THE CONTRACTOR SHALL FURNISH AND INSTALL ONE 20A 1-POLE CIRCUIT BREAKER, BUTTON PHOTOCELL, TERMINAL BLOCK WIRING, AND ALL OTHER ITEMS REQUIRED TO PROVIDE POWER TO THE RELOCATED LUMINAIRES. THESE ITEMS SHALL BE INSTALLED IN THE EXISTING TRAFFIC SIGNAL CABINET. ALL LUMINAIRES SHALL BE WIRED TO 120V. THE COST OF THIS WORK SHALL BE INCLUDED IN THE BID PRICE FOR "RELOCATE EXISTING LUMINAIRE."
  4. THE EXISTING CCTV CAMERA SHALL BE INSTALLED AT A MOUNTING HEIGHT OF 43 FT. ON MA-2 AS SHOWN IN THE PLANS.
  5. THE CONTRACTOR SHALL FURNISH ONE OF THE PROPOSED VIDEO VEHICLE DETECTION CAMERAS AS MATERIAL ONLY. THE CONTRACTOR SHALL DELIVER THE CAMERA, BRACKETING, HARDWARE AND CONNECTORS TO THE IDOT TRAFFIC BUILDING AT 1025 W. DETWEILLER DR. PEORIA 61615. THE COST OF THIS WORK SHALL BE INCLUDED IN THE BID PRICE FOR THE PAY ITEM "VIDEO VEHICLE DETECTION SYSTEM, 3 CAMERAS."

NOT TO SCALE

MODEL: Default  
 FILE NAME: S:\CEN\W\W\ORD\DESIGN\AV\Hanson\# Comp\Proc Contract\13404 Letting\_68J05 IL 29 & Cedar Hills Mast Arm\11\_29 & Cedar Hills\_02-07-24.dgn

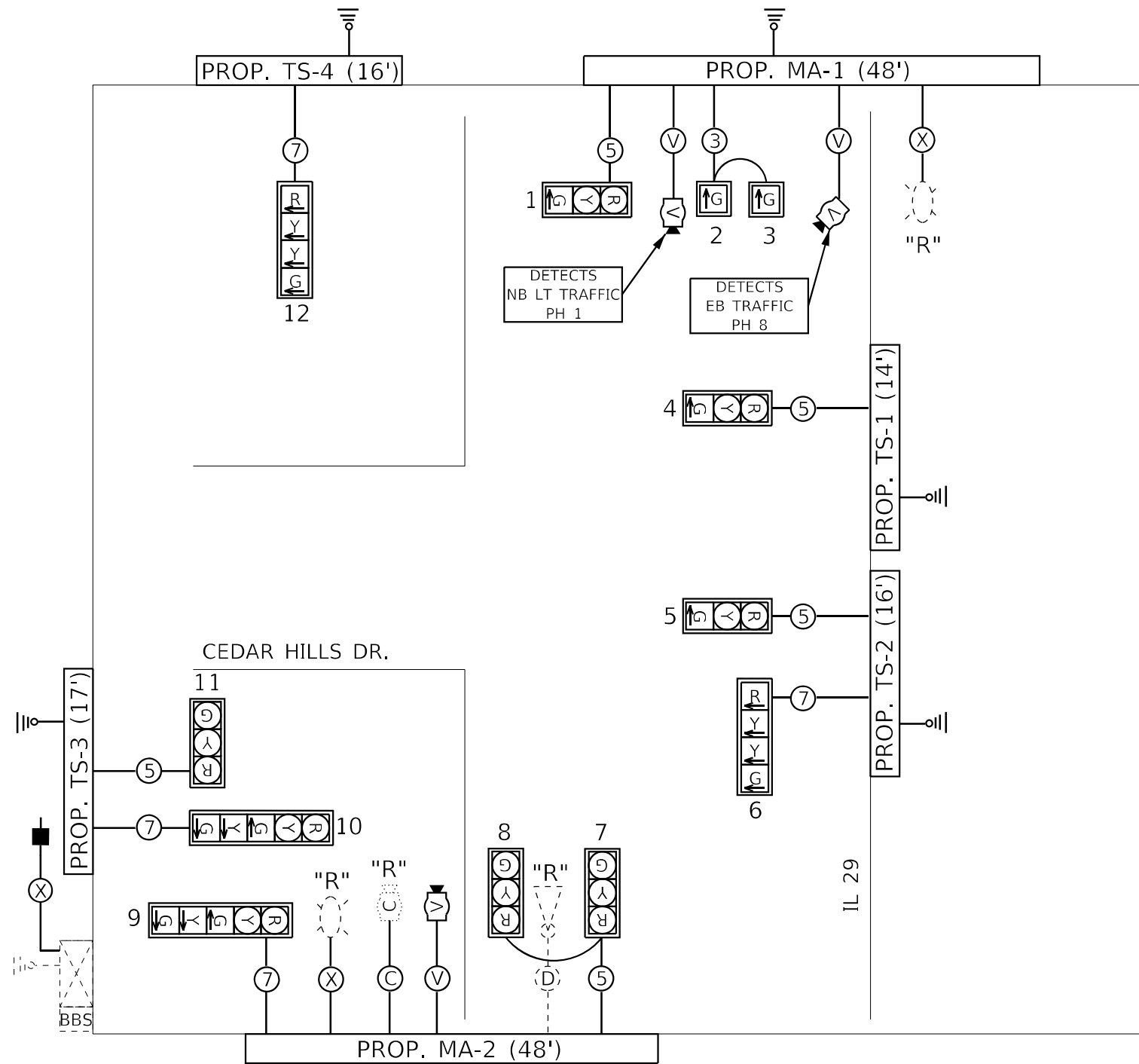
USER NAME = Trevor.Hanson	DESIGNED -	REVISED 02-07-24 TJH
PLOT SCALE = 23,8272 * / in.	DRAWN -	REVISED -
PLOT DATE = 2/7/2024	CHECKED -	REVISED -
	DATE -	REVISED -

**STATE OF ILLINOIS  
DEPARTMENT OF TRANSPORTATION**

<b>PROPOSED TRAFFIC SIGNAL PLANS (ABOVE GRADE)</b>			
SCALE:	SHEET	OF SHEETS	STA. TO STA.

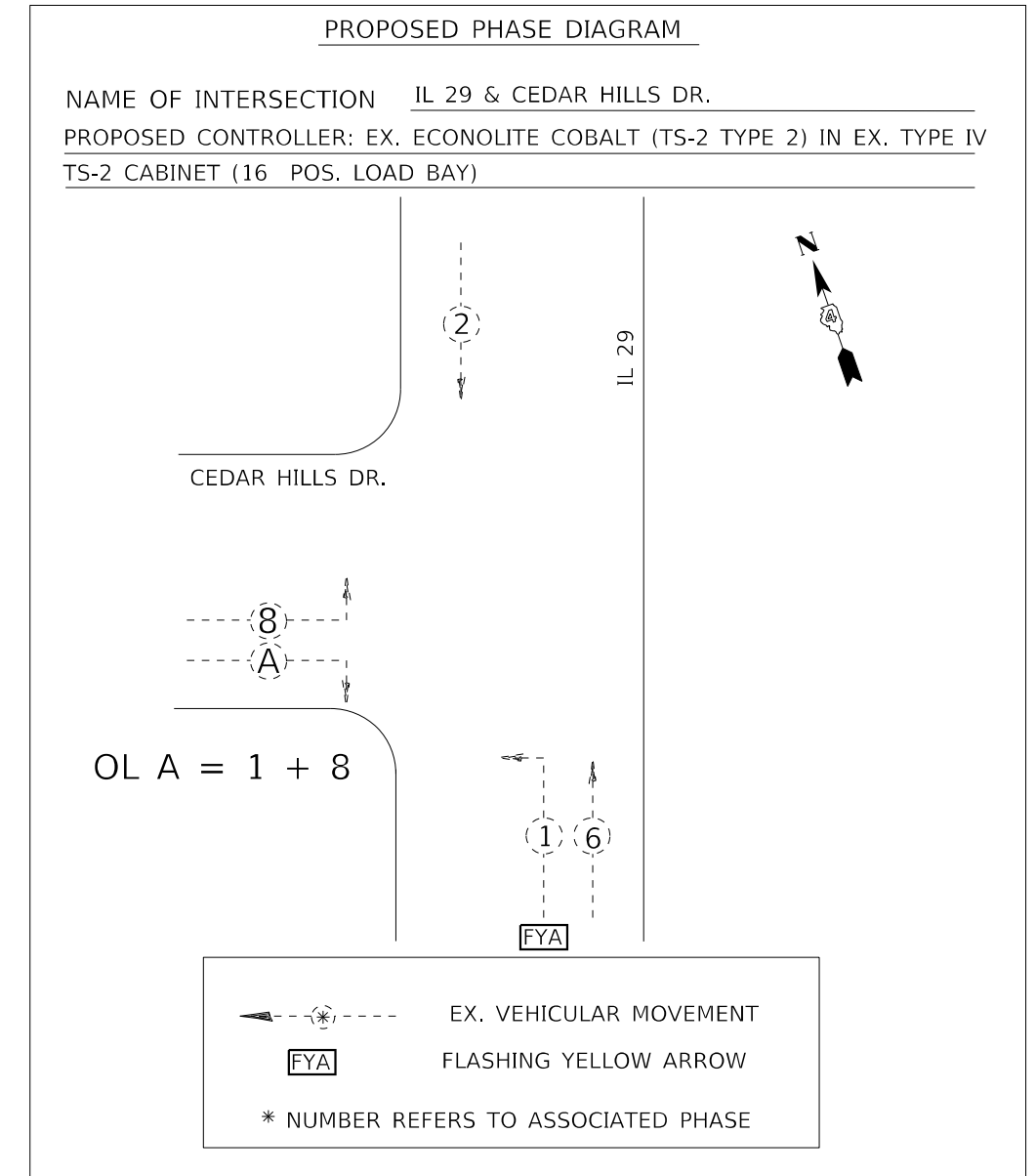
F.A.P. RTE.	SECTION	COUNTY	TOTAL SHEETS	SHEET NO.
318	(9)TS-1	PEORIA	18	13
CONTRACT NO. 68J05				
ILLINOIS FED. AID PROJECT				





TRAFFIC SIGNALS LEGEND

- |                                       |  |                               |
|---------------------------------------|--|-------------------------------|
| EX. TRAFFIC SIGNAL CONTROLLER CABINET | PROP. 3 SEC. SIGNAL HEAD WITH BACKPLATE    | PROP. 3/C NO. 14 SIGNAL CABLE |
| EX. BATTERY BACKUP SYSTEM             | PROP. 3 SEC. SIGNAL HEAD WITHOUT BACKPLATE | PROP. 5/C NO. 14 SIGNAL CABLE |
| PROP. ELECTRIC SERVICE                | EX. ROADWAY LUMINAIRE (RELOCATED)          | PROP. 7/C NO. 14 SIGNAL CABLE |
| EX. GROUND/SAFETY BOND                | EX. CCTV CAMERA (RELOCATED)                | PROP. 1/C NO. 6 CABLE         |
| PROP. GROUND/SAFETY BOND              | EX. MICROWAVE VEHICLE DETECTOR (RELOCATED) | PROP. VIDEO DETECTION CABLE   |
| EX. QUADRAPOLE DETECTOR LOOP          | PROP. VIDEO VEHICLE DETECTION CAMERA       | PROP. CAT 5 ETHERNET CABLE    |
| EX. DETECTOR LOOP                     |  | EX. MICROWAVE DETECTOR CABLE  |



"R" INDICATES ITEM TO BE RELOCATED

MODEL PATH: S:\CEN\WV\ORD\DESIGN\AN\Hanson# 68J05 IL 29 & Cedar Hills IL 02-01-24.dgn

USER NAME = Trevor.Hanson	DESIGNED -	REVISED -
PLOT SCALE = 23,8272 * / in.	DRAWN -	REVISED -
PLOT DATE = 2/1/2024	CHECKED -	REVISED -
	DATE -	REVISED -

**STATE OF ILLINOIS  
DEPARTMENT OF TRANSPORTATION**

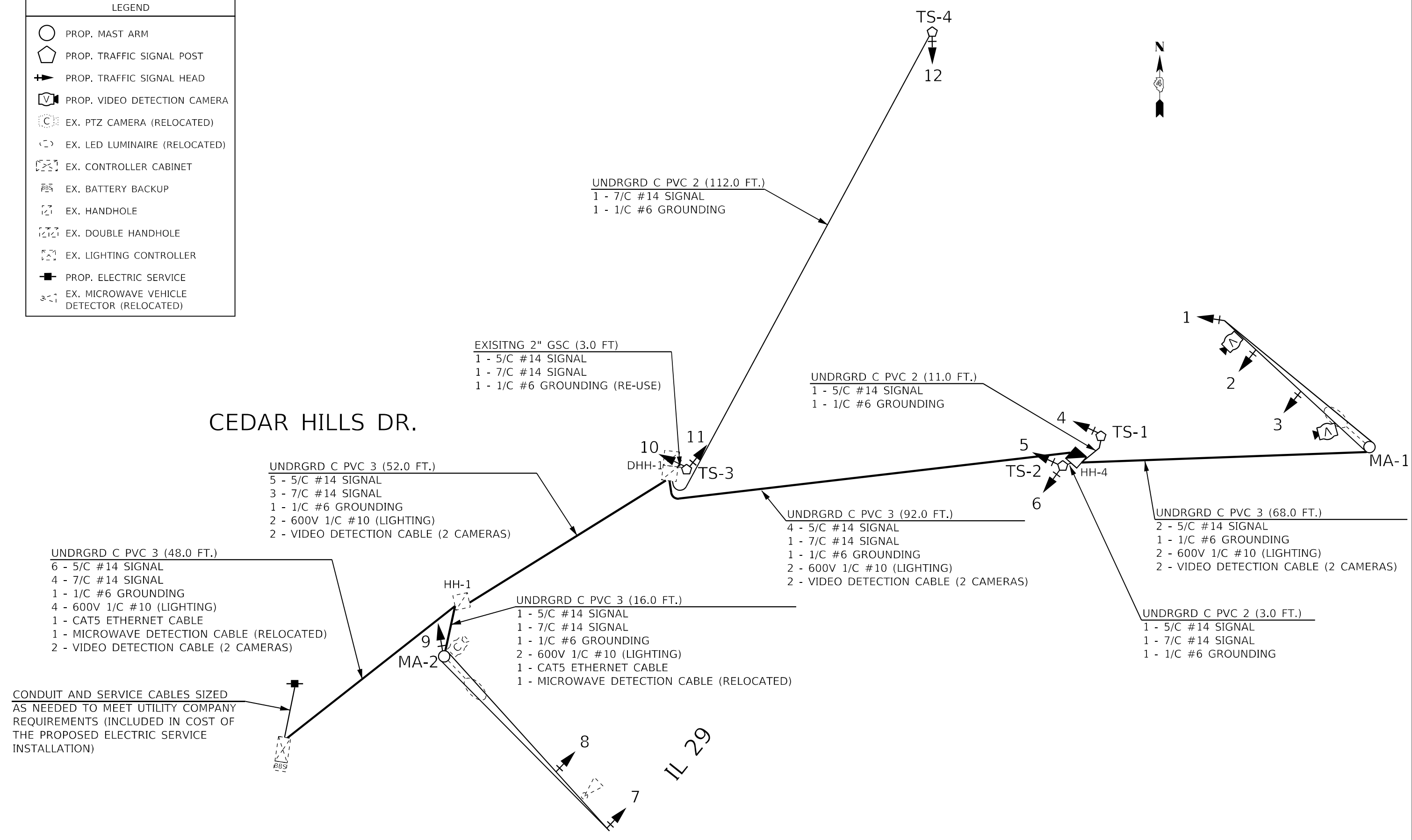
<b>PROPOSED CIRCUIT AND PHASE DIAGRAMS</b>			
SCALE:	SHEET	OF SHEETS	STA. TO STA.

F.A.P. RTE. 318	SECTION (9)TS-1	COUNTY PEORIA	TOTAL SHEETS 18	SHEET NO. 14
CONTRACT NO. 68J05				ILLINOIS FED. AID PROJECT

NOT TO SCALE

LEGEND	
	PROP. MAST ARM
	PROP. TRAFFIC SIGNAL POST
	PROP. TRAFFIC SIGNAL HEAD
	PROP. VIDEO DETECTION CAMERA
	EX. PTZ CAMERA (RELOCATED)
	EX. LED LUMINAIRE (RELOCATED)
	EX. CONTROLLER CABINET
	EX. BATTERY BACKUP
	EX. HANDHOLE
	EX. DOUBLE HANDHOLE
	EX. LIGHTING CONTROLLER
	PROP. ELECTRIC SERVICE
	EX. MICROWAVE VEHICLE DETECTOR (RELOCATED)

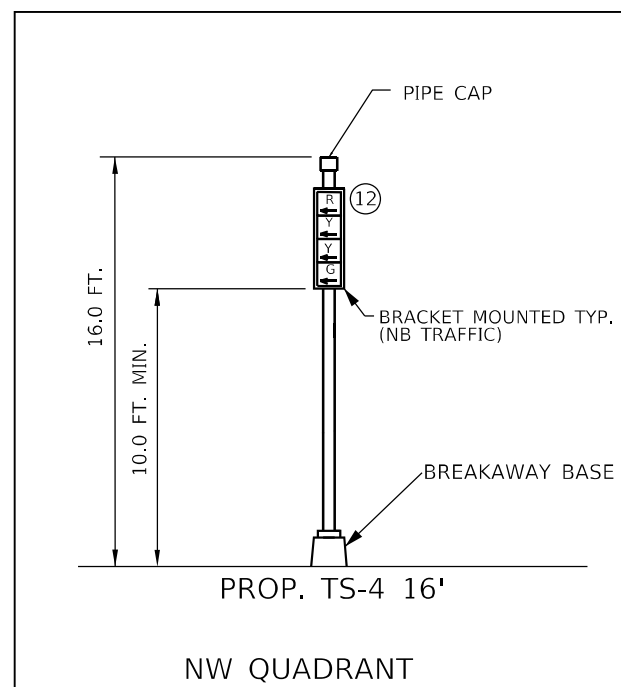
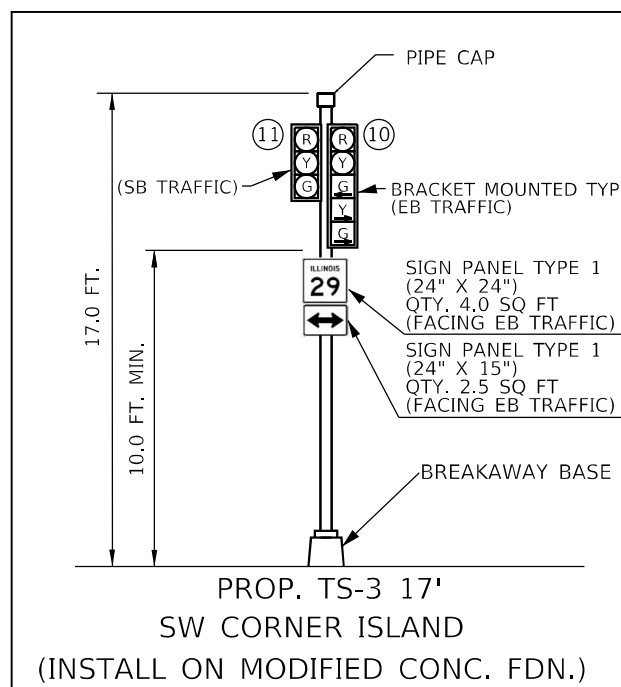
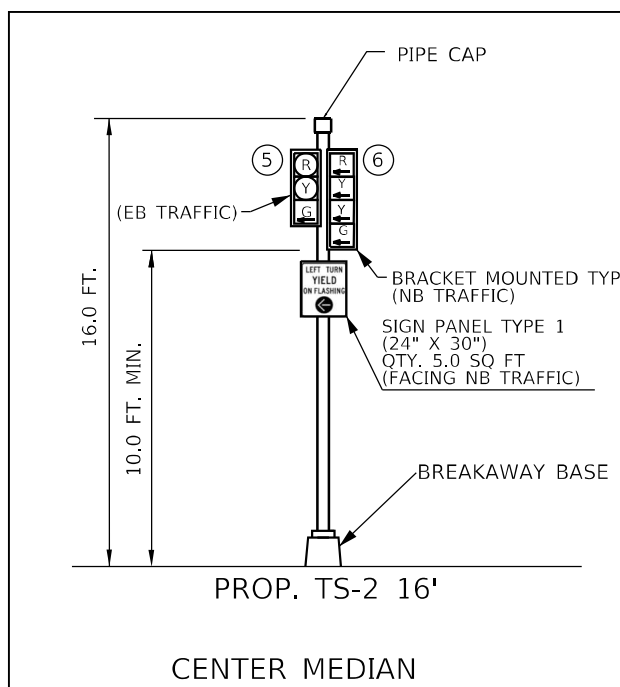
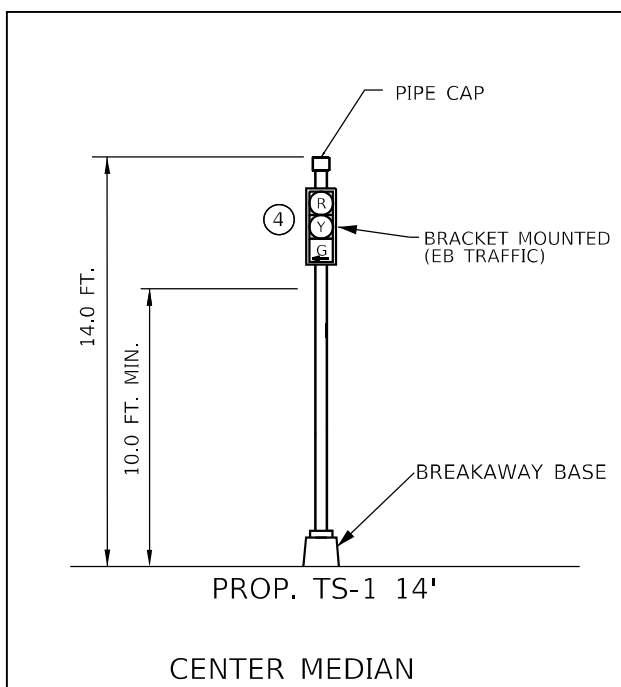
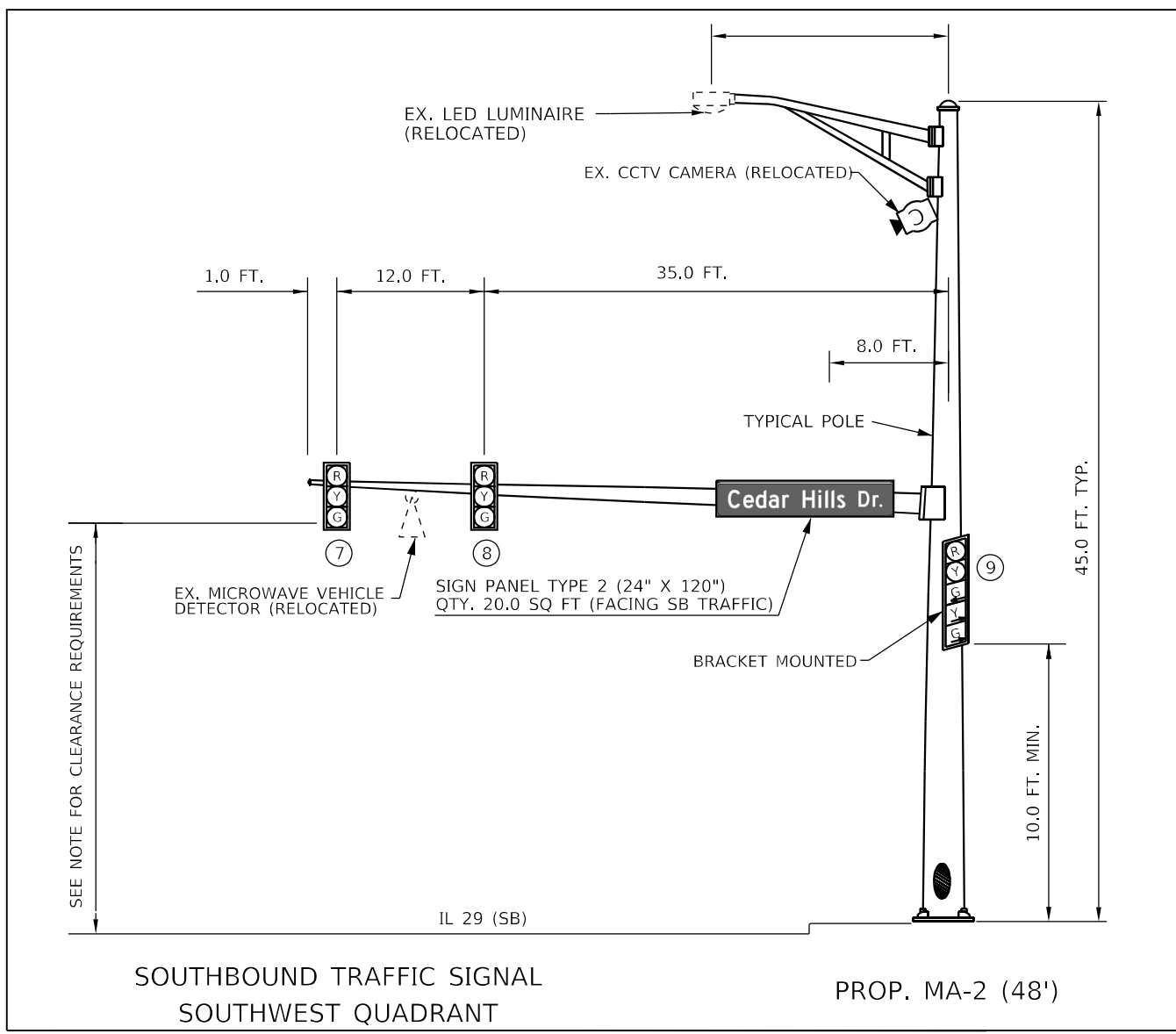
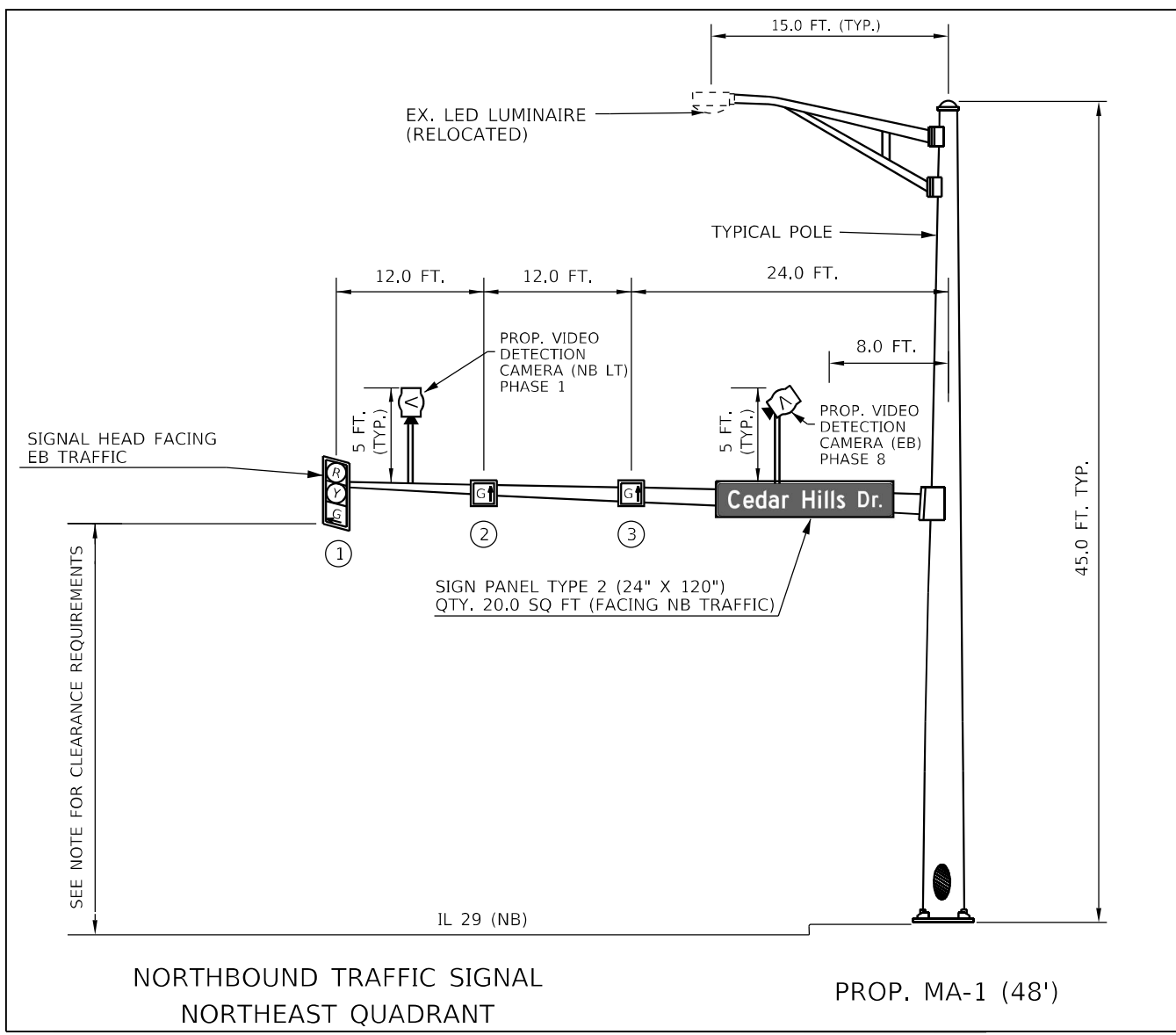
CEDAR HILLS DR.



NOT TO SCALE

MODEL PATH: S:\CEN\WV\ORD\ESP\AN\Hanson\_68105\_IL\_29 & Cedar Hills\_102-01-241.dgn

USER NAME = Trevor.Hanson	DESIGNED -	REVISED -	<b>STATE OF ILLINOIS DEPARTMENT OF TRANSPORTATION</b>	<b>PROPOSED TRAFFIC SIGNAL CABLE PLAN</b>			F.A.P. RTE. = 318	SECTION = (9)TS-1	COUNTY = PEORIA	TOTAL SHEETS = 18	SHEET NO. = 15
PLOT SCALE = 23,8272' / in.	CHECKED -	REVISED -					SCALE:	SHEET OF SHEETS	STA. TO STA.	CONTRACT NO. 68J05	
PLOT DATE = 2/1/2024	DATE -	REVISED -		ILLINOIS FED. AID PROJECT							



- NOTES:
- CLEARANCE REQUIREMENTS BETWEEN THE BOTTOM OF THE LOWEST SIGNAL HEAD BACKPLATE AND THE HIGHEST POINT OF THE PAVEMENT: 16.0 FT. (MIN.) AND 18.0 FT. (MAX.)
  - THE CONTRACTOR SHALL RELOCATE ALL OTHER EXISTING SIGNS FROM THE REMOVED MAST ARMS TO THE PROPOSED MAST ARMS. THIS WORK WILL NOT BE PAID FOR SEPARATELY BUT SHALL BE INCLUDED IN THE COST OF THE PROPOSED MAST ARMS.

NOT TO SCALE

MODEL PATH: S:\CENTRAL\WORK\DESIGN\AN\Hanson\68105\_IL\_29\_Cedar\_Hills\_IL\_02-01-24.dgn

USER NAME = Trevor.Hanson	DESIGNED -	REVISED -
PLOT SCALE = 23,8272 * / in.	DRAWN -	REVISED -
PLOT DATE = 2/1/2024	CHECKED -	REVISED -
	DATE -	REVISED -

STATE OF ILLINOIS  
DEPARTMENT OF TRANSPORTATION

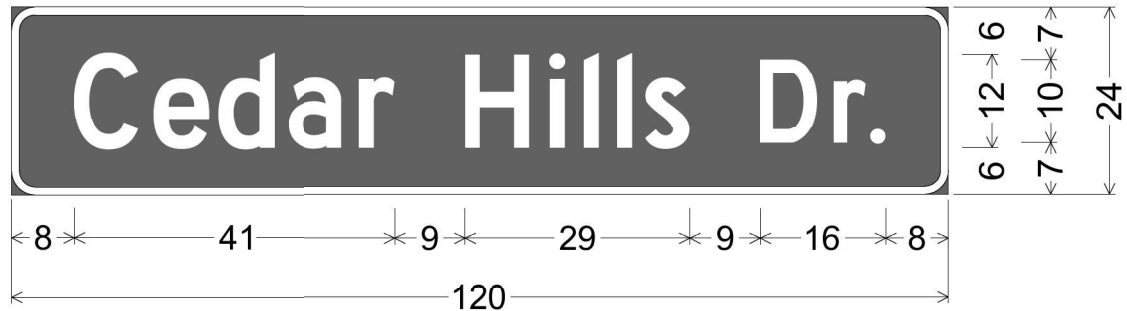
PROPOSED MAST ARM AND TRAFFIC SIGNAL POST DETAILS

SCALE: SHEET OF SHEETS STA. TO STA.

F.A.P. RTE. 318	SECTION (9)TS-1	COUNTY PEORIA	TOTAL SHEETS 18	SHEET NO. 16
CONTRACT NO. 68J05				
ILLINOIS FED. AID PROJECT				



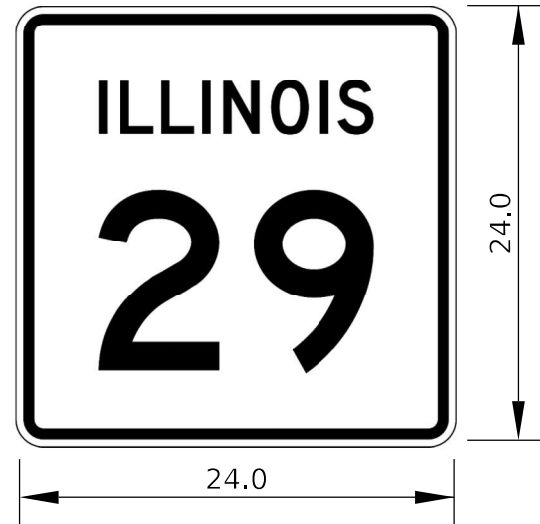




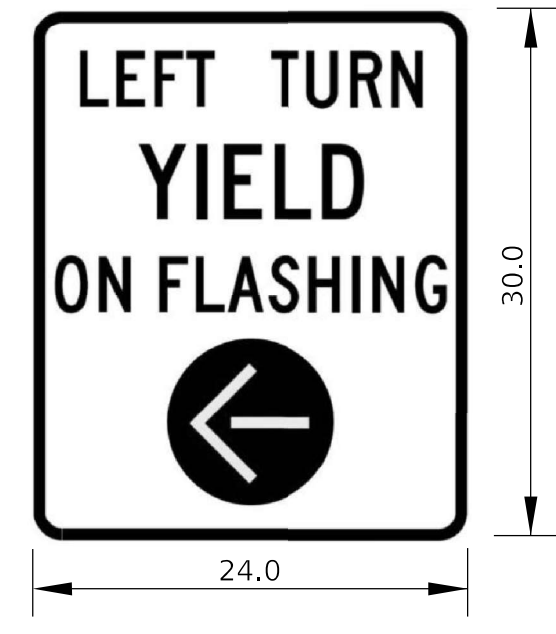
3" Radius, 1" Border, White on Green;  
 "Cedar Hills Dr.", D 2K;  
 Table of distances between letter and object lefts

8	C	e	d	a	r	H	i	l	l	s	D	r	.	8
	10	8	9	9	14	11	4	4	4	15	9	5	2	8

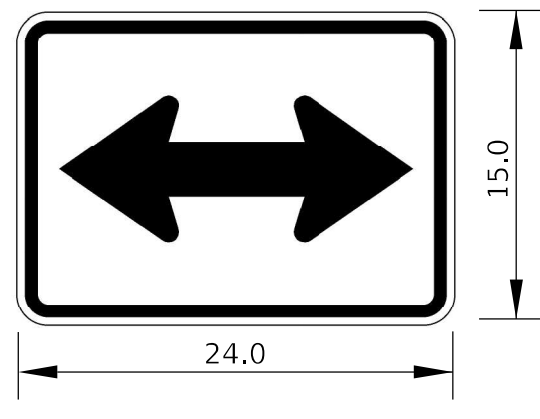
ILLINOIS ROUTE 29 SIGN



FLASHING YELLOW ARROW SIGN



M6-4 SIGN



ALL SIGN DIMENSION UNITS ARE INCHES UNLESS STATED OTHERWISE

MODEL Path: \\S:\GEN\W\W\ORD\DESIGN\Hanson, T\ 68105 IL 29 & Cedar Hills 02-01-24.dgn  
 FILE NAME: SIGN\W\W\ORD\DESIGN\Hanson, T\ 68105 IL 29 & Cedar Hills 02-01-24.dgn

NOT TO SCALE

USER NAME = Trevor.Hanson	DESIGNED -	REVISED -
PLOT SCALE = 23.8272 * / in.	DRAWN -	REVISED -
PLOT DATE = 2/1/2024	CHECKED -	REVISED -
	DATE -	REVISED -

STATE OF ILLINOIS  
 DEPARTMENT OF TRANSPORTATION

SIGN PANEL DETAILS

SCALE: SHEET OF SHEETS STA. TO STA.

F.A.P. RTE. 318	SECTION (9)TS-1	COUNTY PEORIA	TOTAL SHEETS 18	SHEET NO. 18
			CONTRACT NO. 68J05	
ILLINOIS FED. AID PROJECT				