

STATE OF ILLINOIS
DEPARTMENT OF TRANSPORTATION

F.A.P. RTE.	SECTION	COUNTY	TOTAL SHEETS	SHEET NO.
*	**	***	8	1
ILLINOIS		CONTRACT NO. 74C80		
FAP 328A, FAU 7702		D7 PARKING LOT IMPROV 2024-3		
		EFFINGHAM, COLES		

FOR INDEX OF SHEETS, SEE SHEET NO. 2

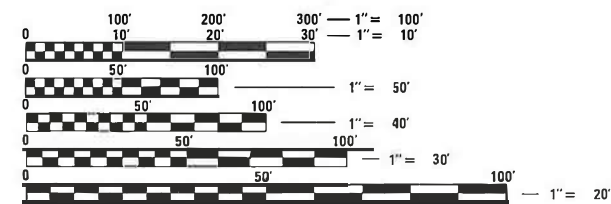
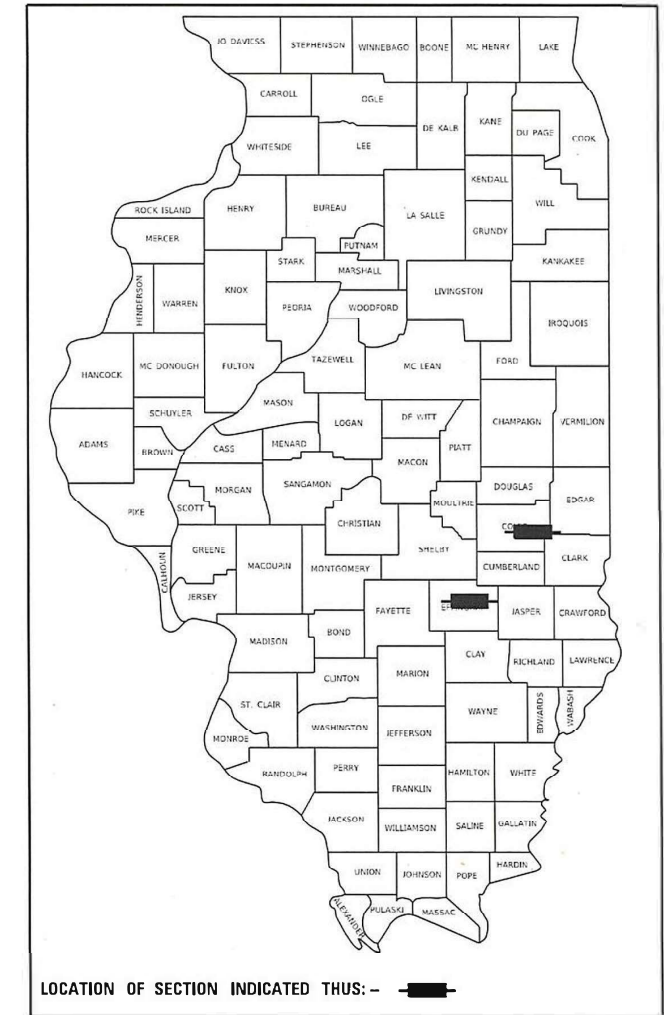
**PROPOSED
HIGHWAY PLANS**

**FAP 328A & FAU 7702 (US 45)
SECTION D7 PARKING LOT IMPROV 2024-3**

**PARKING IMPROVEMENT
EFFINGHAM, COLES COUNTY**

C-97-013-24

D-97-012-24

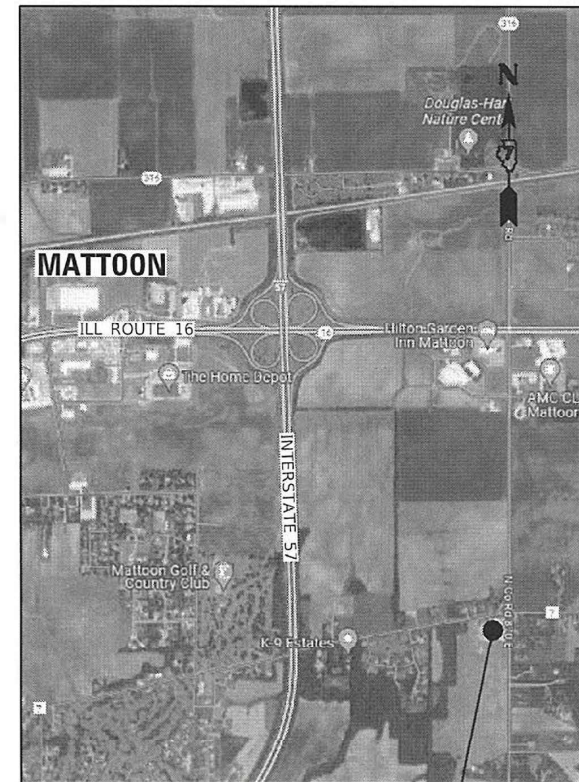


FULL SIZE PLANS HAVE BEEN PREPARED USING STANDARD ENGINEERING SCALES. REDUCED SIZED PLANS WILL NOT CONFORM TO STANDARD SCALES. IN MAKING MEASUREMENTS ON REDUCED PLANS, THE ABOVE SCALES MAY BE USED.

J.U.L.I.E.
JOINT UTILITY LOCATION INFORMATION FOR EXCAVATORS
1-800-892-0123
OR 811



PROJECT LOCATION
EFFINGHAM
DISTRICT OFFICE



PROJECT LOCATION
MATTOON YARD

PROJECT ENGINEER: JACQUELYN SEALS
PROJECT MANAGER: LEAH HILLE

CONTRACT NO. 74C80

GROSS LENGTH = 1056 FT. = 0.2 MILE
NET LENGTH = 1056 FT. = 0.2 MILE

STATE OF ILLINOIS
DEPARTMENT OF TRANSPORTATION

SUBMITTED February 14, 2024
Jaffrey P. Murphy REGIONAL ENGINEER

March 22, 2024 [Signature]
ENGINEER OF DESIGN AND ENVIRONMENT

March 22, 2024 [Signature]
DIRECTOR OF HIGHWAYS PROJECT IMPLEMENTATION

PRINTED BY THE AUTHORITY
OF THE STATE OF ILLINOIS

GENERAL NOTES

THIS PROJECT IS LOCATED AT THE DISTRICT 7 OFFICE IN EFFINGHAM AND THE COLES COUNTY YARD LOCATED IN MATTOON. THE WORK INCLUDED IN SECTION D7 PARKING LOT IMPROV 2024-3 CONSISTS OF THE REMOVAL AND REPLACEMENT OF PARKING LOT PAVEMENT, ADA IMPROVEMENTS, AND ANY OTHER WORK NECESSARY TO COMPLETE THIS SECTION.

A UNIFORMLY STRAIGHT SAW CUT SHALL BE MADE AT LOCATIONS WHERE PROPOSED NEW CONSTRUCTION WILL ABUT EXISTING PAVEMENT. THE SAW CUT SHALL BE MADE THE SAME DEPTH AS THE PARKING LOT PAVEMENT REMOVAL. THIS WORK WILL BE CONSIDERED INCLUDED IN THE COST OF THE CONTRACT ITEMS INVOLVED AND NO EXTRA COMPENSATION WILL BE ALLOWED.

THE BACK ENTRANCE AT THE EFFINGHAM OFFICE SHALL BE AVAILABLE FOR ADA ACCESS AT ALL TIMES DURING OFFICE HOURS (MONDAY-FRIDAY 7AM-5PM).

THE GUARDRAIL THAT IS REMOVED AT THE EFFINGHAM OFFICE BUILDING SHALL BE SALVAGED AND DELIVERED TO THE EFFINGHAM YARD. CONTACT ROBERT DURBIN PRIOR TO DELIVERY (PH. 217.994.1203).

CONTACT DOUG RUDOLPHI FOR FINAL PLACEMENT OF THE MATTOON PARKING LOT IMPROVEMENTS (OFFICE: 217.342.8281, CELL: 217.299.4636).

INDEX OF SHEETS

SHEET NO.	ITEM
1	COVER SHEET
2	INDEX OF SHEETS, LIST OF STANDARDS, AND GENERAL NOTES
3	SUMMARY OF QUANTITIES
4	SCHEDULE OF QUANTITIES
5-6	PLAN SHEETS
7	STAGING SHEET
8	PAVEMENT MARKING DETAILS

THE FOLLOWING STANDARDS ARE A PART OF THESE PLANS AND ARE INCLUDED AFTER SHEET NO. 8:

STANDARD NO.	DESCRIPTION
000001-08	STANDARD SYMBOLS, ABBREVIATIONS AND PATTERNS
001001-02	AREAS OF REINFORCEMENT BARS
001006	DECIMAL OF AN INCH AND OF A FOOT
420001-10	PAVEMENT JOINTS
420701-03	PAVEMENT WELDED WIRE REINFORCEMENT
606001-08	CONCRETE CURB TYPE B AND COMBINATION CONCRETE CURB AND GUTTER
780001-05	TYPICAL PAVEMENT MARKINGS

MODEL: Default
 FILE: \\mattc:\pub\ultra-cw-bea\efw.com\PI\INDOT\Documents\DOT Offices\District 7\Project\74C80\CADD\DATA\CAD\Sheet\D74C80-01-01-01.dgn

USER NAME = jessica.hille	DESIGNED - LMH	REVISED -	STATE OF ILLINOIS DEPARTMENT OF TRANSPORTATION	INDEX OF SHEETS & GENERAL NOTES			F.A.P. RTE.	SECTION	COUNTY	TOTAL SHEETS	SHEET NO.
DRAWN - LMH	REVISIED -	*					**	***	8	2	
PLOT SCALE = 100,0000 ' / in.	CHECKED -	REVISIED -		CONTRACT NO. 74C80							
PLOT DATE = 2/14/2024	DATE - 2/14/2024	REVISIED -		SCALE: NO SCALE	SHEET 1	OF 1	SHEETS	STA.	TO STA.	ILLINOIS	FED. AID PROJECT

SUMMARY OF QUANTITIES			TOTAL QUANTITIES	CONSTRUCTION TYPE CODE	
CODE NO	ITEM	UNIT		0021 100% STATE	0021 100% STATE
31100300	SUBBASE GRANULAR MATERIAL, TYPE A 4"	SQ YD	2163	883	1280
42000060	WELDED WIRE REINFORCEMENT	SQ YD	2163	883	1280
44213204	TIE BARS 3/4"	EACH	190	145	45
60255500	MANHOLES TO BE ADJUSTED	EACH	2		2
60600605	CONCRETE CURB, TYPE B	FOOT	32		32
63200310	GUARDRAIL REMOVAL	FOOT	215		215
67100100	MOBILIZATION	L SUM	1	0.5	0.5
78006100	PREFORMED THERMOPLASTIC PAVEMENT MARKING - LETTERS AND SYMBOLS	SQ FT	18.6		18.6
78006110	PREFORMED THERMOPLASTIC PAVEMENT MARKING - LINE 4"	FOOT	630		630
78006150	PREFORMED THERMOPLASTIC PAVEMENT MARKING - LINE 12"	FOOT	370		370
81028160	UNDERGROUND CONDUIT, GALVANIZED STEEL, 3/4" DIA.	FOOT	20		20
89500400	RELOCATE EXISTING PEDESTRIAN PUSH-BUTTON	EACH	2		2

SUMMARY OF QUANTITIES			TOTAL QUANTITIES	CONSTRUCTION TYPE CODE	
CODE NO	ITEM	UNIT		0021 100% STATE	0021 100% STATE
K0026830	SHRUB REMOVAL	EACH	10		10
X0301339	REMOVE EXISTING PARKING BLOCKS	EACH	11		11
X0322329	TIMBER CURB REMOVAL	FOOT	45		45
* X0322330	HANDICAP SIGN	EACH	6		6
X0323378	CONCRETE PARKING BLOCKS	EACH	14		14
X0327727	PLANTER REMOVAL	L SUM	1		1
X4200408	PORTLAND CEMENT CONCRETE PAVEMENT 8" (SPECIAL)	SQ YD	2163	883	1280
X4404000	PARKING LOT PAVEMENT REMOVAL	SQ YD	2163	883	1280
* X8730401	ELECTRIC CABLE IN CONDUIT, COMMUNICATION	FOOT	75		75
Z0003300	BASE COURSE REMOVAL (SPECIAL)	SQ YD	2163	883	1280

* SPECIALTY ITEM

REV. - MS

MODEL: Default
FILE: 4404000 - 100.0000 * / in.
PLOT DATE: 2/26/2024

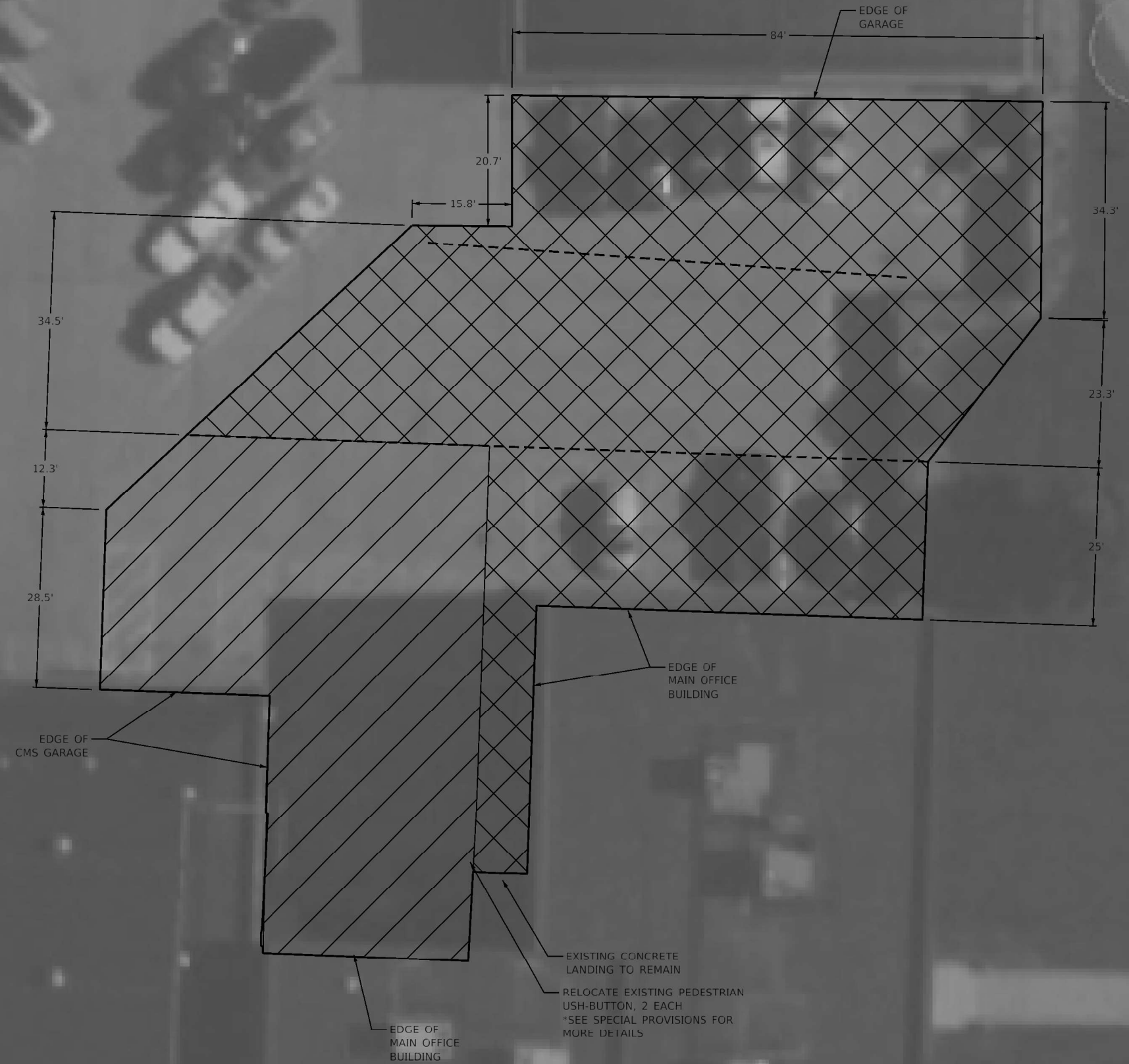
USER NAME = Default	DESIGNED = LMH	REVISED =
DRAWN = LMH	CHECKED =	REVISED =
PLT SCALE = 100.0000 * / in.	DATE = 2/26/2024	REVISED =

**STATE OF ILLINOIS
DEPARTMENT OF TRANSPORTATION**

SUMMARY OF QUANTITIES

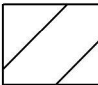
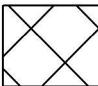
SCALE: NO SCALE SHEET 1 OF 1 SHEETS STA. T STA.

F.A.P. RTE.	SECTION	COUNTY	TOTAL SHEETS	SHEET NO.
*	**	***	8	3
CONTRACT NO. 74C80				



NOTES:

- SUGGESTED SEQUENCE OF STAGE 1 OPERATIONS:**
1. REMOVE STAGE 1 PORTION OF THE PARKING LOT PAVEMENT.
 2. BURY COMMUNICATION CABLE CONDUIT.
 3. RELOCATE PEDESTRIAN PED-BUTTON TO A TEMPORARY LOCATION FOR IT TO REMAIN USABLE.
 4. CONSTRUCT THE STAGE 1 PORTION OF SUBBASE MATERIAL AND PCC PAVEMENT.
- SUGGESTED SEQUENCE OF STAGE 2 OPERATIONS:**
1. REMOVE STAGE 2 PORTION OF THE PARKING LOT PAVEMENT.
 2. CONSTRUCT THE STAGE 2 PORTION OF THE SUBBASE MATERIAL AND PCC PAVEMENT.
 3. RELOCATE PEDESTRIAN PED-BUTTON TO FINAL LOCATION.

-  PROPOSED STAGE 1 CONSTRUCTION
-  PROPOSED STAGE 2 CONSTRUCTION

M:\REL - Default - 2024\Projects\74C80\CADD\Drawings\DOT Office\Drawings\74C80-4th-staging.dgn

USER NAME = Default	DESIGNED - LMH	REVISED -
DRAWN - LMH	REVISIONS -	
PLOT SCALE = 20.0000' / in.	CHECKED -	REVISED -
PLOT DATE = 2/14/2024	DATE - 2/14/2024	REVISED -

**STATE OF ILLINOIS
DEPARTMENT OF TRANSPORTATION**

**STAGING SHEET
DISTRICT 7 OFFICE**

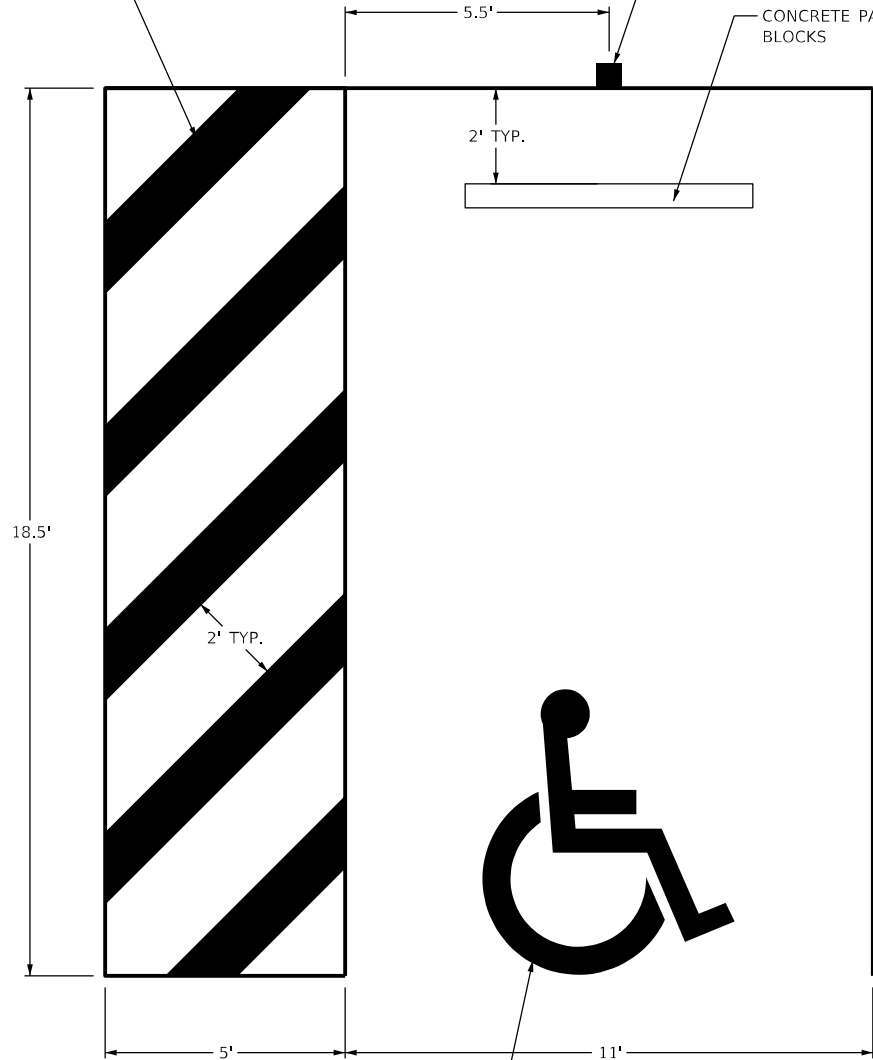
SCALE: 20.0000' / in. SHEET 1 OF 1 SHEETS STA. TO STA.

F.A.P. RTE.	SECTION	COUNTY	TOTAL SHEETS	SHEET NO.
*	**	***	8	7
CONTRACT NO. 74C80				

PREFORMED THERMOPLASTIC,
12" DIAGONAL LINE (YELLOW)

HANDICAP SIGN

CONCRETE PARKING
BLOCKS



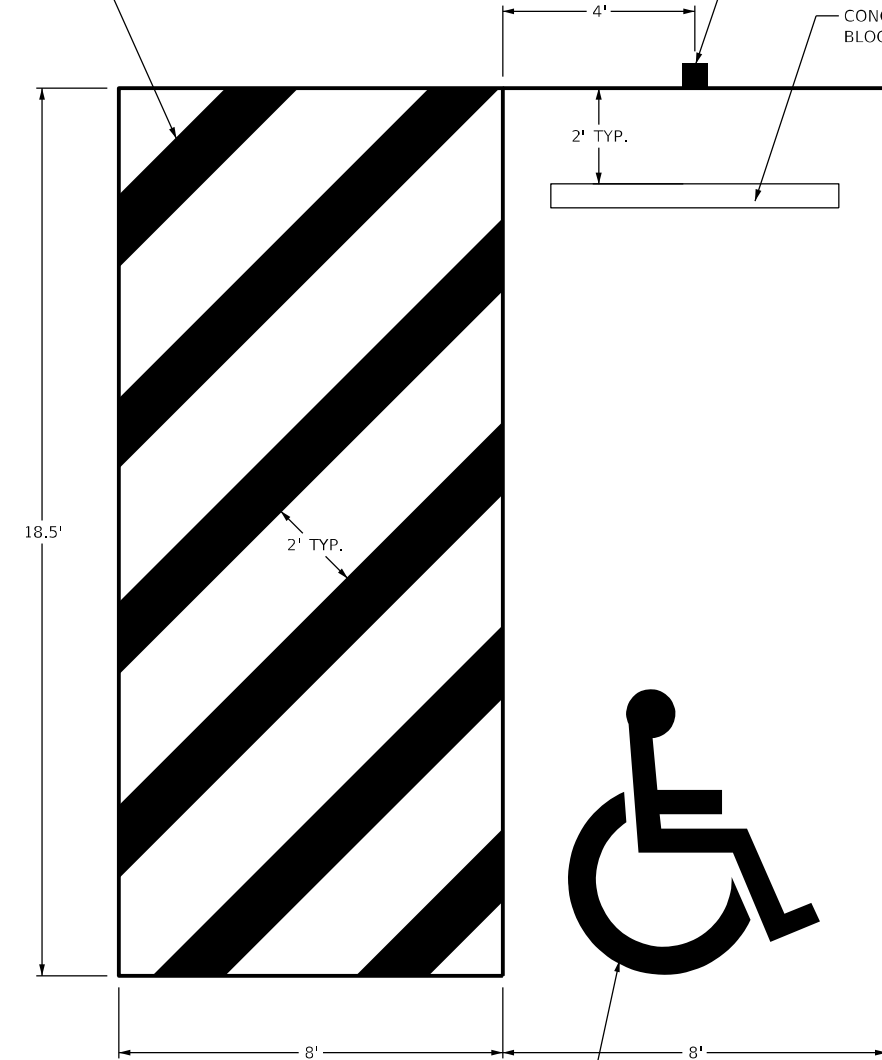
PREFORMED THERMOPLASTIC,
4" LINE (YELLOW)

PREFORMED THERMOPLASTIC
LETTERS AND SYMBOLS (YELLOW)

PREFORMED THERMOPLASTIC,
12" DIAGONAL LINE (YELLOW)

HANDICAP SIGN

CONCRETE PARKING
BLOCKS



PREFORMED THERMOPLASTIC,
4" LINE (YELLOW)

PREFORMED THERMOPLASTIC
LETTERS AND SYMBOLS (YELLOW)

MODEL: Default
FILE: \\mdepc-pw-backend.com\PW\DOT\Documents\DOT_Offices\District_7\Projects\74C80\CADD\Drawings\74C80-01-01.dwg

USER NAME = jessica.hille	DESIGNED - LMH	REVISED -
	DRAWN - LMH	REVISED -
PLOT SCALE = 100,0000' / in.	CHECKED -	REVISED -
PLOT DATE = 2/14/2024	DATE - 2/14/2024	REVISED -

**STATE OF ILLINOIS
DEPARTMENT OF TRANSPORTATION**

PAVEMENT MARKING DETAIL

SCALE: NO SCALE SHEET 1 OF 1 SHEETS STA. TO STA.

F.A.P. RTE.	SECTION	COUNTY	TOTAL SHEETS	SHEET NO.
-	**	***	8	8
CONTRACT NO. 74C80				