

STATE OF ILLINOIS
DEPARTMENT OF TRANSPORTATION

F.A.P. RTE.	SECTION	COUNTY	TOTAL SHEETS	SHEET NO.
782	D9 BRIDGE OVERLAY 2023-2	GALLATIN	21	1
		ILLINOIS	CONTRACT NO. 78920	

FOR INDEX OF SHEETS, SEE SHEET NO. 3

FOR SUMMARY OF QUANTITIES, SEE SHEET NO. 4-5

PROPOSED HIGHWAY PLANS

FAP ROUTE 782 (IL 1) OVER LAWLER DITCH
STRUCTURE NO. 030-0020
FAP ROUTE 782 (IL 1) OVER SALINE RIVER
STRUCTURE NO. 030-0021
D9 BRIDGE OVERLAY 2023-2
HBFP-PAAT(046)
BRIDGE REPAIR
GALLATIN COUNTY
C-99-026-22

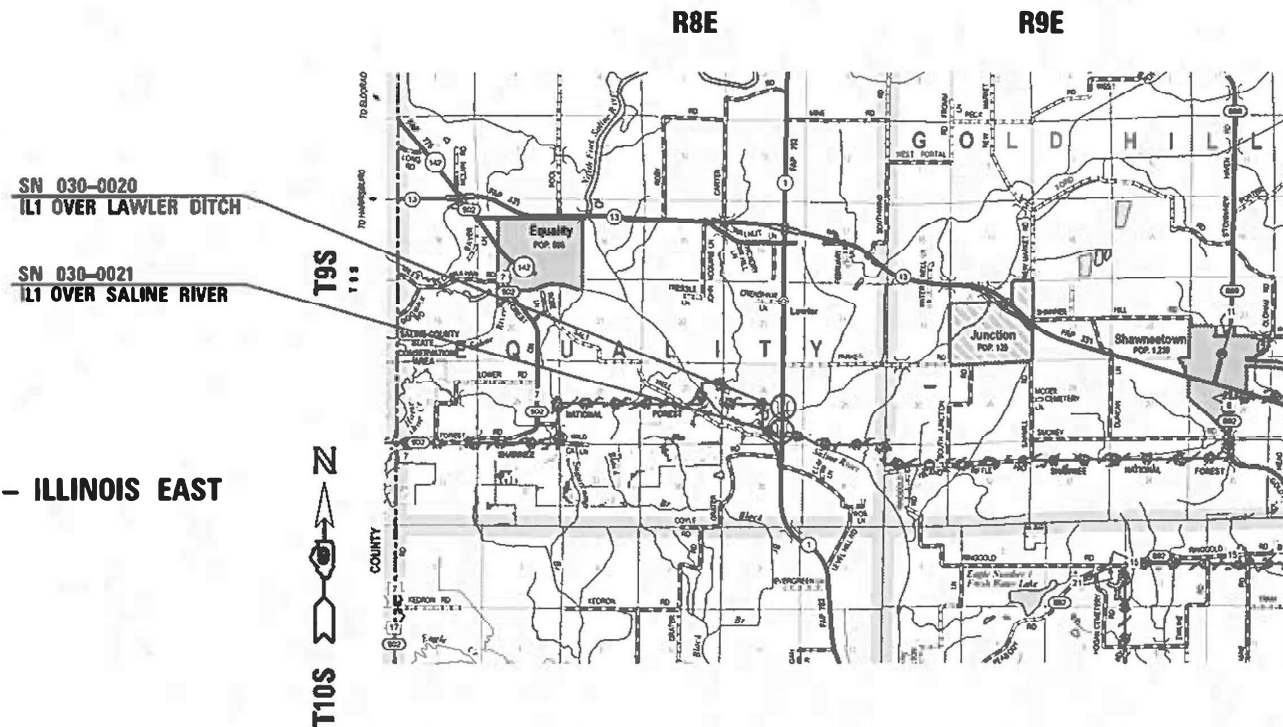
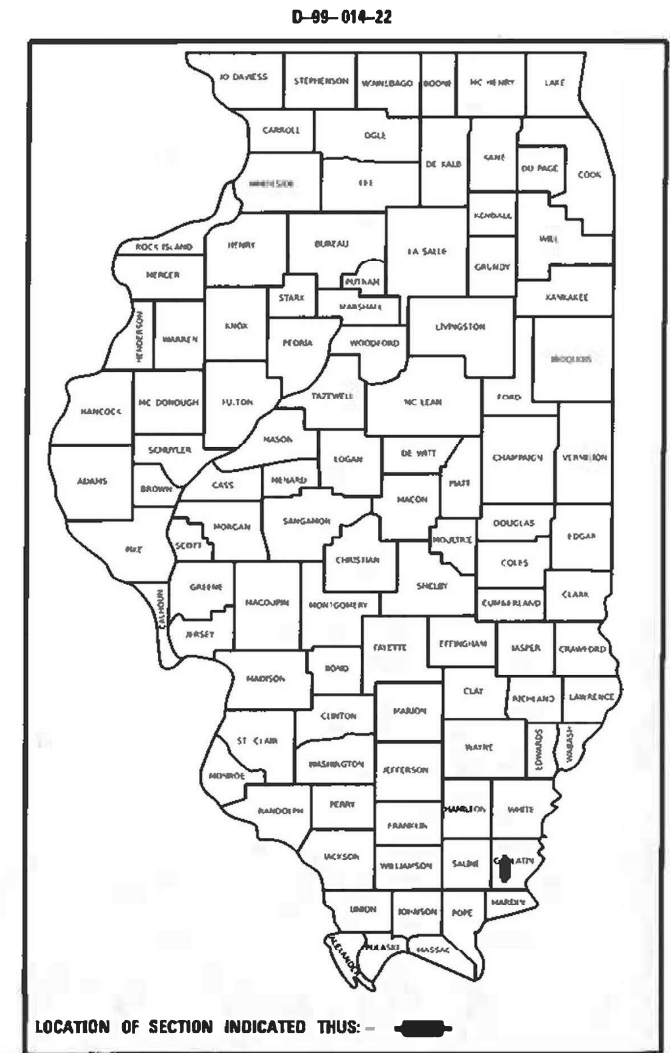
TRAFFIC DATA

STRUCTURE NO. 030-0020
2023 ADT = 1840
WITH 28.80% TRUCKS

STRUCTURE NO. 030-0021
2022 ADT = 1840
WITH 28.80% TRUCKS

TOWNSHIPS

EQUALITY



COORDINATE SYSTEM : STATE PLANE ZONE - ILLINOIS EAST

POSTED SPEED : 55 MPH

J.U.L.I.E.
JOINT UTILITY LOCATION INFORMATION FOR EXCAVATION
1-800-892-0123
OR 811

PROJECT ENGINEER EHREN KIRBY
PROJECT DESIGNER DEREK SNIDER

CONTRACT NO. 78920

GROSS LENGTH = 870 FT. = 0.165 MILES
NET LENGTH = 870 FT. = 0.165 MILES

STATE OF ILLINOIS
DEPARTMENT OF TRANSPORTATION

SUBMITTED Jan. 24 20 24
KL HR

REGION FIVE ENGINEER

March 22, 2024 [Signature]
ENGINEER OF DESIGN AND ENVIRONMENT

March 22, 2024 [Signature]
DIRECTOR OF HIGHWAYS PROJECT IMPLEMENTATION

PRINTED BY THE AUTHORITY
OF THE STATE OF ILLINOIS

MODEL: Signature Sheet (Sheet)
FILE NAME: I:\GIS\Projects\DOT\Office\Bids\9.000\Project\78920\CAD\Sheet\9.000\78920-814-Cover 51.dgn

Prepared By:

DISTRICT STUDIES & PLANS ENGINEER

Examined By:

Nancy Lee

DISTRICT LAND ACQUISITION ENGINEER

Examined By:

Carie Nelson

DISTRICT PROGRAM DEVELOPMENT ENGINEER

Examined By:

R. C. Coe

DISTRICT OPERATIONS ENGINEER

Examined By:

Dan J. Weis

DISTRICT PROJECT IMPLEMENTATION ENGINEER

Examined By:

Dan J. Weis

DISTRICT CONSTRUCTION ENGINEER

Examined By:

Aan Wang

DISTRICT MATERIALS ENGINEER

USER NAME - derek.snyder	DESIGNED -	REVISED -
PLOT SCALE - 0.16666673 1/ in.	DRAWN -	REVISIED -
PLOT DATE - 2/22/2024	CHECKED -	REVISED -
	DATE -	REVISED -

STATE OF ILLINOIS
DEPARTMENT OF TRANSPORTATION

SIGNATURE SHEET

SCALE: SHEET OF SHEETS STA. TO STA.

F.A.P. RTE.	SECTION	COUNTY	TOTAL SHEETS	SHEET NO.
782	D9 BRIDGE OVERLAY 2023-2	GALLATIN	21	2
ILLINOIS FED. AID PROJECT			CONTRACT NO. 78920	

INDEX OF SHEETS

1	COVER SHEET
2	SIGNATURES
3	GENERAL NOTES, INDEX OF SHEETS, AND STANDARDS
4-6	SUMMARY OF QUANTITIES
7-15	SN 030-0020 REPAIR DETAILS
16-21	SN 030-0021 REPAIR DETAILS

GENERAL NOTES

FACTORS USED FOR ESTIMATING PLAN QUANTITIES ARE AS FOLLOWS AND SHALL NOT BE USED FOR THE BASIS OF FINAL QUANTITIES:
 ALL HOT MIX ASPHALT 2.016 TONS/CU YD

COMMITMENTS: NONE

Location(s):	Hot-Mix Asphalt Surface Course (IL-34)
Mixture Use(s):	Hot-Mix Asphalt Surface Course, Mix D, N70
PG:	PG64-22
Design Air Voids:	4.0%, 70 Gyraton Design
Mixture Composition:(Gradation Mixture)	IL-9.5mm
Friction Aggregate:	Mix D
Mixture Weight:	112 lbs/sq yd/in
Quality Management Program:	QC/QA
Sublot Size:	3000 tons
Material Transfer Device (Required?):	No

Location(s):	Hot-Mix Asphalt 10" widening (Top Lift)
Mixture Use(s):	Hot-Mix Asphalt Surface Course, Mix C, N70
PG:	PG64-22
Design Air Voids:	4.0%, 70 Gyraton Design
Mixture Composition:(Gradation Mixture)	IL-9.5mm
Friction Aggregate:	Mix C
Mixture Weight:	112 lbs/sq yd/in
Quality Management Program:	QC/QA
Sublot Size:	3000 tons
Material Transfer Device (Required?):	No

Location(s):	Hot-Mix Asphalt 10" widening (Bottom Lifts)
Mixture Use(s):	Hot-Mix Asphalt Surface Binder, N70
PG:	PG64-22
Design Air Voids:	4.0%, 70 Gyraton Design
Mixture Composition:(Gradation Mixture)	IL-19.0mm
Friction Aggregate:	None
Mixture Weight:	112 lbs/sq yd/in
Quality Management Program:	QC/QA
Sublot Size:	3000 tons
Material Transfer Device (Required?):	No

Lift Thickness:
 1 1/2" Surface Course
 2 1/4" Binder Course
 2 1/4" Binder Course
 4" Binder Course

STANDARDS

000001-08	STANDARD SYMBOLS, ABBREVIATIONS AND PATTERNS
001001-02	AREAS OF REINFORCEMENT BARS
001006	DECIMAL OF AN INCH AND OF A FOOT
420001-10	PAVEMENT JOINTS
701001-02	OFF-ROAD OPERATIONS, 2L, 2W, MORE THAN 15' AWAY
701006-05	OFF-ROAD OPERATIONS, 2L, 2W, 15' TO 24" FROM PAVEMENT EDGE
701201-05	LANE CLOSURE, 2L, 2W DAY ONLY
701321-18	LANE CLOSURE, 2L, 2W, BRIDGE REPAIR WITH BARRIER
701326-04	LANE CLOSURE, 2L, 2W, PAVEMENT WIDENING, FOR SPEEDS > 45 MPH
701901-09	TRAFFIC CONTROL DEVICES
704001-08	TEMPORARY CONCRETE BARRIER
780001-05	TYPICAL PAVEMENT MARKINGS
782006-01	GUARDRAIL AND BARRIER WALL REFLECTOR MOUNTING DETAILS
862001-01	UNINTERRUPTABLE POWER SUPPLY (UPS)

REV. - MS

MODEL: Index of sheets (Sheet)
 FILE NAME: P:\Illinois\Projects\78920\CD\Drawings\CD\Drawings\Index\Index.dgn

USER NAME = derek.snider	DESIGNED -	REVISED -	STATE OF ILLINOIS DEPARTMENT OF TRANSPORTATION	INDEX OF SHEETS, GENERAL NOTES, STANDARDS			F.A.P. RTE.	SECTION	COUNTY	TOTAL SHEETS	SHEET NO.
PLOT SCALE = 0.16666633 ' / in.	DRAWN -	REVISED -					782	D9 BRIDGE REPAIR	SALINE	21	3
PLOT DATE = 2/22/2024	CHECKED -	REVISED -		SCALE: SHEET OF SHEETS STA. TO STA.			CONTRACT NO. 78920				
	DATE -	REVISED -		ILLINOIS FED. AID PROJECT							

SUMMARY OF QUANTITIES

COUNTY:	GALLATIN CO	GALLATIN CO
ROUTE:	FAP 782	FAP 782
FUNDING:	80% FEDERAL 20% STATE	80% FEDERAL 20% STATE
LOCATION:	BRIDGE	BRIDGE
	SN 030-0020	SN 030-0021
	0047	0047

CODE NUMBER	ITEM DESCRIPTION	UNIT	TOTAL QUANTITY	GALLATIN CO	GALLATIN CO
20200500	EARTH EXCAVATION (WIDENING)	CU YD	46	24	22
35650500	BASE COURSE WIDENING 10"	SQ YD	167	87	80
40600290	BITUMINOUS MATERIALS (TACK COAT)	POUND	699	345	354
40600982	HOT-MIX ASPHALT SURFACE REMOVAL - BUTT JOINT	SQ YD	570	285	285
40600990	TEMPORARY RAMP	SQ YD	72	36	36
40604062	HOT-MIX ASPHALT SURFACE COURSE, IL-9.5, MIX "D", N70	TON	128	66	62
50102400	CONCRETE REMOVAL	CU YD	18.6	9.7	8.9
50300255	CONCRETE SUPERSTRUCTURE	CU YD	20.3	10.7	9.6
50300260	BRIDGE DECK GROOVING	SQ YD	2,185	705	1,480
50300300	PROTECTIVE COAT	SQ YD	30	16	14
50800205	REINFORCEMENT BARS, EPOXY COATED	POUND	2,620	1,330	1,290
50800515	BAR SPLICERS	EACH	48	24	24
52000110	PREFORMED JOINT STRIP SEAL	FOOT	135	71	64
52100520	ANCHOR BOLTS, 1"	EACH	34	14	20

MODEL: SQ-Q-1 [Sheet]
 FILE NAME: c:\pwworking\illinois.gov\derek.snider@illinois.gov\d0818415D92xxxx.ShtC-Sq-Q.dgn

REV. - MS

SUMMARY OF QUANTITIES - CONT

CODE NUMBER	ITEM DESCRIPTION	UNIT	TOTAL QUANTITY	COUNTY:	GALLATIN CO	GALLATIN CO
				ROUTE:	FAP 782	FAP 782
			FUNDING:	80% FEDERAL 20% STATE	80% FEDERAL 20% STATE	
			LOCATION:	BRIDGE	BRIDGE	
				SN 030-0020	SN 030-0021	
				0047	0047	
60300105	FRAMES AND GRATES TO BE ADJUSTED	EACH	8	4	4	
67000400	ENGINEER'S FIELD OFFICE, TYPE A	CAL MO	8	4	4	
67100100	MOBILIZATION	L SUM	1	0.5	0.5	
70100405	TRAFFIC CONTROL AND PROTECTION, STANDARD 701321	EACH	2	1	1	
70100450	TRAFFIC CONTROL AND PROTECTION, STANDARD 701201	L SUM	1	0.5	0.5	
70100500	TRAFFIC CONTROL AND PROTECTION, STANDARD 701326	L SUM	1	0.5	0.5	
70103815	TRAFFIC CONTROL SURVEILLANCE	CAL DA	12	6	6	
70106500	TEMPORARY BRIDGE TRAFFIC SIGNALS	EACH	2	1	1	
70106700	TEMPORARY RUMBLE STRIPS	EACH	12	6	6	
70107025	CHANGEABLE MESSAGE SIGN	CAL DA	56	28	28	
70300100	SHORT TERM PAVEMENT MARKING	FOOT	175	77	98	
70300150	SHORT TERM PAVEMENT MARKING REMOVAL	SQ FT	59	26	33	
70300221	TEMPORARY PAVEMENT MARKING - LINE 4"- PAINT	FOOT	2,625	1,052	1,573	
70400100	TEMPORARY CONCRETE BARRIER	FOOT	1,200	475	725	

MODEL: SQQ-2 [Sheet]
FILE NAME: c:\pwworking\illinois.gov\derek.snider@illinois.gov\d0818415D92xxx-ShtC-SsQ.dgn

REV. - MS

USER NAME = derek.snider	DESIGNED -	REVISED -	STATE OF ILLINOIS DEPARTMENT OF TRANSPORTATION	SUMMARY OF QUANTITIES				F.A. RTE.	SECTION	COUNTY	TOTAL SHEETS	SHEET NO.			
PLOT SCALE = \$\$SCALE\$	DRAWN -	REVISED -		SCALE: 1"=50'	SHEET	OF	SHEETS	STA.	TO	STA.	782	D9 BRIDGE OVERLAY 2023-2	GALLATIN	21	5
PLOT DATE = 2/2/2024	CHECKED -	REVISED -									CONTRACT NO. 78920				
	DATE -	REVISED -									ILLINOIS FED. AID PROJECT				

SUMMARY OF QUANTITIES - CONT

COUNTY:	GALLATIN CO	GALLATIN CO
ROUTE:	FAP 782	FAP 782
FUNDING:	80% FEDERAL 20% STATE	80% FEDERAL 20% STATE
LOCATION:	BRIDGE	BRIDGE
	SN 030-0020	SN 030-0021
	0047	0047

CODE NUMBER	ITEM DESCRIPTION	UNIT	TOTAL QUANTITY	GALLATIN CO	GALLATIN CO
70400200	RELOCATE TEMPORARY CONCRETE BARRIER	FOOT	1,200	475	725
70600251	IMPACT ATTENUATORS, TEMPORARY (NON- REDIRECTIVE, NARROW), TEST LEVEL 3	EACH	4	2	2
70600352	IMPACT ATTENUATORS, RELOCATE (NON- REDIRECTIVE, NARROW), TEST LEVEL 3	EACH	4	2	2
* 78001110	PAINT PAVEMENT MARKING - LINE 4"	FOOT	2,625	1,052	1,573
78300200	RAISED REFLECTIVE PAVEMENT MARKER REMOVAL	EACH	17	7	10
78300201	PAVEMENT MARKING REMOVAL - GRINDING	SQ FT	1,361	565	796
* 86200300	UNINTERRUPTABLE POWER SUPPLY, EXTENDED	EACH	2	1	1
Z0001800	APPROACH SLAB REPAIR (PARTIAL DEPTH)	SQ YD	0.9	0.9	0
Z0001904	STRUCTURAL STEEL REMOVAL	L SUM	1	0	1
Z0001905	STRUCTURAL STEEL REPAIR	POUND	364	241	123
Z0012130	BRIDGE DECK SCARIFICATION 3/4"	SQ YD	2,337	754	1,583
Z0012164	BRIDGE DECK MICROSILICA CONCRETE OVERLAY 2 1/2"	SQ YD	2,337	754	1,583
Z0012754	STRUCTURAL REPAIR OF CONCRETE (DEPTH EQUAL TO OR LESS THAN 5 INCHES)	SQ FT	160	20	140
Z0016200	DECK SLAB REPAIR (PARTIAL)	SQ YD	8.6	0	8.6

* SPECIALTY ITEM

REV. - MS

MODEL: SQQ.3 [Sheet]
FILE NAME: c:\pwworking\illinois.gov\derek.snider@illinois.gov\d818415D92xxx-ShtC-Ssq.dgn

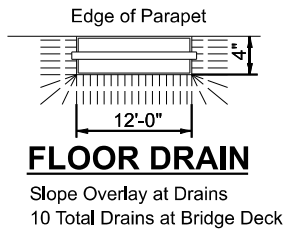
USER NAME = derek.snider	DESIGNED -	REVISED -
	DRAWN -	REVISED -
PLOT SCALE = \$\$SCALE\$	CHECKED -	REVISED -
PLOT DATE = 2/2/2024	DATE -	REVISED -

**STATE OF ILLINOIS
DEPARTMENT OF TRANSPORTATION**

SUMMARY OF QUANTITIES

SCALE: 1"=50' SHEET OF SHEETS STA. TO STA.

F.A. RTE.	SECTION	COUNTY	TOTAL SHEETS	SHEET NO.
782	D9 BRIDGE OVERLAY 2023-2	GALLATIN	21	6
CONTRACT NO. 78920				
ILLINOIS FED. AID PROJECT				



GENERAL NOTES

Reinforcement bars designated (E) shall be epoxy coated.

Prior to pouring the new concrete deck, all heavy or loose rust, loose mill scale, and other loose or potentially detrimental foreign material shall be removed from the surfaces in contact with concrete. Tightly adhered paint may remain unless otherwise noted. Removal shall be accomplished by methods that will not damage the steel and the cost will be included in the pay item covering removal of the existing concrete.

Plan dimensions and details relative to existing plans are subject to nominal construction variations. The Contractor shall field verify existing dimensions and details affecting new construction and make necessary approved adjustments prior to construction or ordering of materials. Such variations shall not be cause for additional compensation for a change in scope of the work, however, the Contractor will be paid for the quantity actually furnished at the unit price bid for the work.

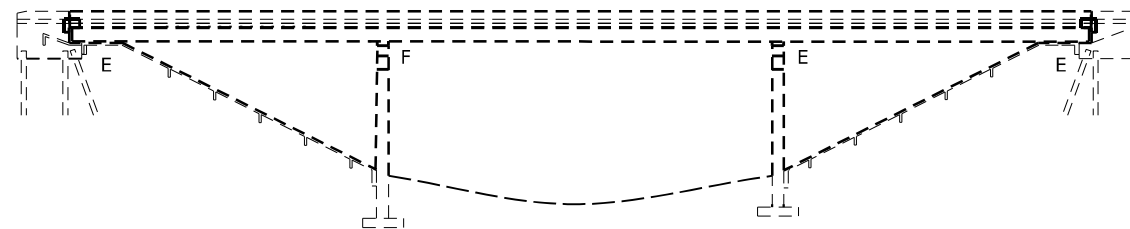
Existing reinforcement bars extending into the removal area shall be cleaned, straightened and incorporated into the new construction. Any reinforcement bars that are damaged during concrete removal shall be replaced with an approved bar splicer or anchorage system. Cost included with Concrete Removal.

Joint openings shall be adjusted according to Article 520.04 of the Std. Specs. when the deck is poured at an ambient temperature other than 50°F.

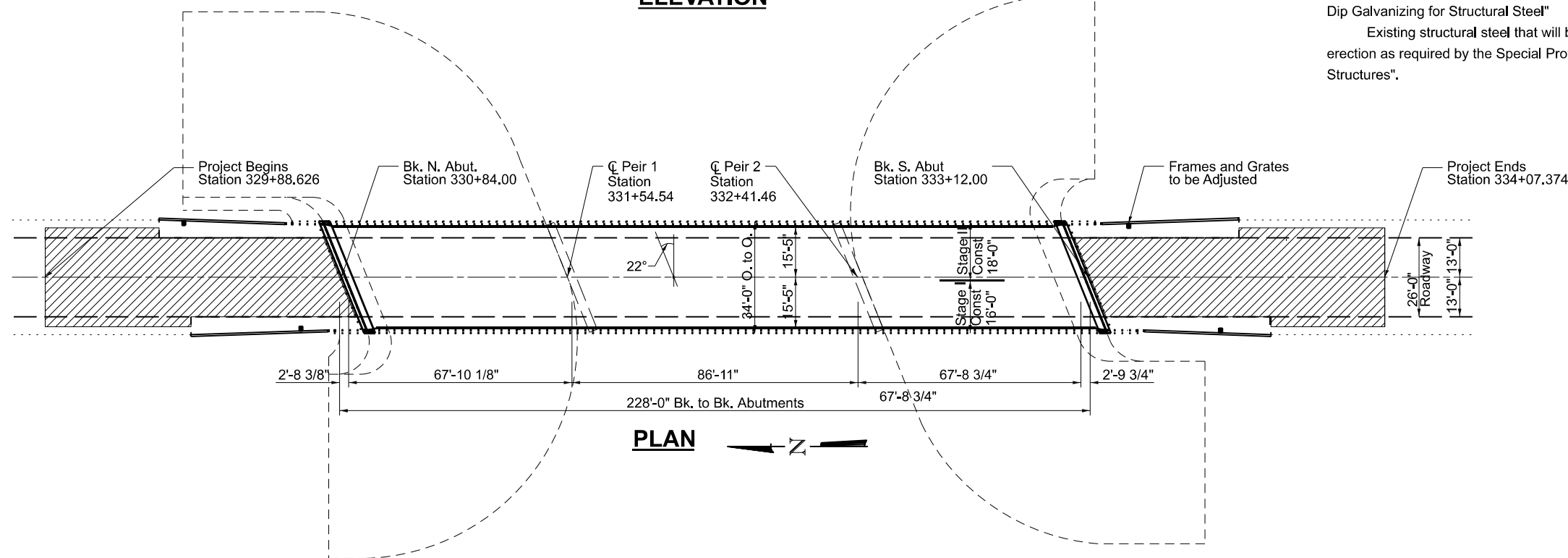
All structural steel shall conform to AASHTO Classification M-270 Gr. 50, unless otherwise noted.

All new structural steel and bearing assembly shall be hot-dip galvanized. See special Provisions for "Hot Dip Galvanizing for Structural Steel"

Existing structural steel that will be in contact with new structural steel shall be cleaned and painted prior to erection as required by the Special Provision "Cleaning and Painting Contact Surface Areas of Existing Steel Structures".



ELEVATION



PLAN

TOTAL BILL OF MATERIAL

ITEM	UNIT	QUANTITY
HMA Surface Course, IL-9.5, Mix "D", N70	Ton	66
Hot Mix Asphalt Base Course Widening, 10"	Sq. Yd.	87
Bituminous Material (Tack Coat)	Pound	345
Approch Slab Repair (Partial Depth)	Sq. Yd.	0.9
Bar Splicers	Each	24
Concrete Superstructure	Cu. Yd.	10.7
Concrete Removal	Cu. Yd.	9.7
Reinforcement Bars, Epoxy Coated	Pound	1330
Preformed Joint Strip Seal	Foot	71
Structural Repair of Concrete (Depth < 5")	Sq Ft	20
Protective Coat	Sq. Yd.	16
Bridge Deck Scarification 3/4"	Sq Yd.	754
Bridge Deck Microsilica Concrete Overlay 2 1/2"	Sq Yd.	754
Bridge Deck Grooving	Sq Yd.	705
Frames and Grates to be Adjusted	Each	4
Structural Steel Repair	Pound	241
Anchor Bolts, 1"	Each	14

* On New Concrete Only

LEGEND:



SCOPE OF WORK

- Approach Slab Repair (Partial)
- Concrete Structural Repair
- Preformed Joint Strip Seal
- Microsilica Deck Overlay

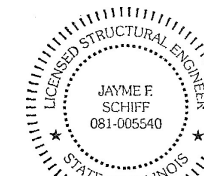
DESIGN STRESSES

(From Existing Plans)

Design Loading HS 20-44
Design Stresses
f_c=3,500 psi
f_y=60,000psi (Reinf.)
f_y=27,000 psi (Structure)

(New)

f_c=4,000 psi
f_y=60,000psi (Reinf.)
f_y=50,000 psi (M270 Grade 50)



EXPIRES 11-30-2024

Jayme F. Schiff

**GENERAL PLAN & ELEVATION
IL 1 OVER LAWLER DITCH
FAP 782 - D9 BRIDGE OVERLAY 2023-2
GALLATIN COUNTY
STRUCTURE NO. 030-0020**

MODEL: Plan Sheet 7 (Sheet)
FILE NAME: P:\GIS\Projects\78220\CD\Drawings\CD\Drawings\030-0020-SNH-Structure.dgn

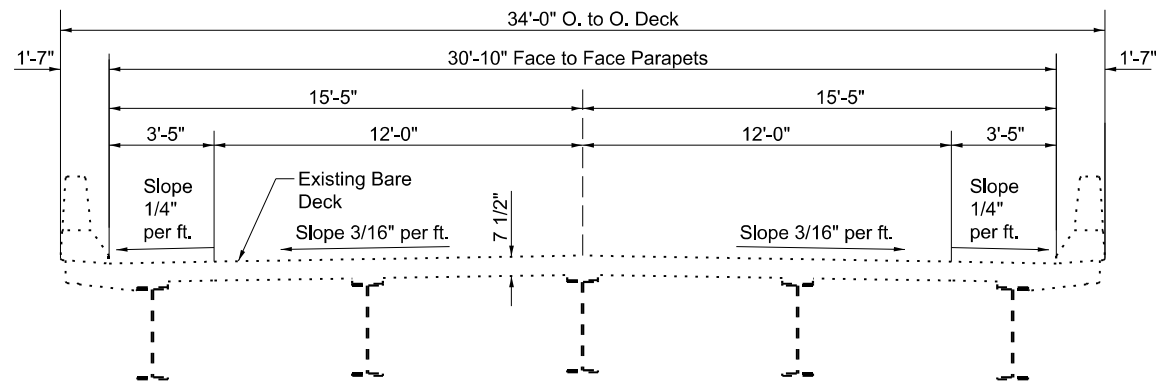
USER NAME = derek.snider	DESIGNED -	REVISED -
PLOT SCALE = 0.16666633 1/ in.	DRAWN -	REVISED -
PLOT DATE = 3/19/2024	CHECKED -	REVISED -
	DATE -	REVISED -

**STATE OF ILLINOIS
DEPARTMENT OF TRANSPORTATION**

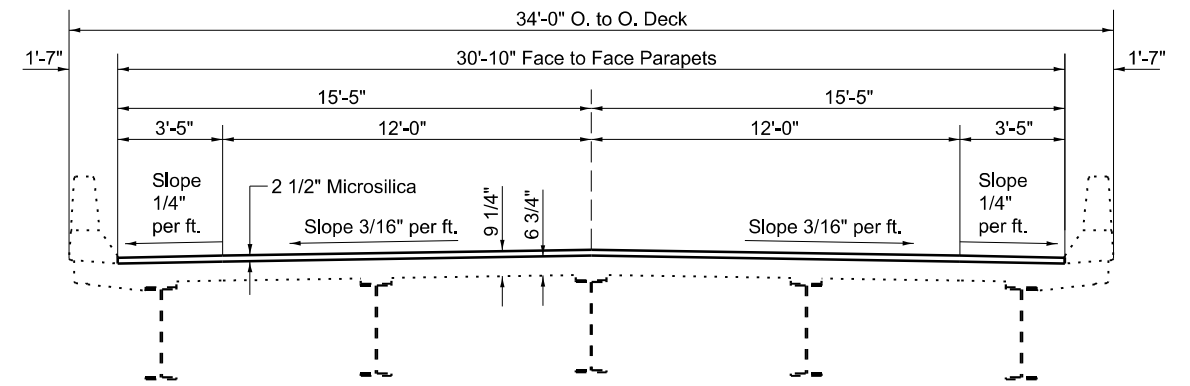
**GENERAL PLAN & ELEVATION
SN 030-0020**

SCALE: SHEET OF SHEETS STA. TO STA.

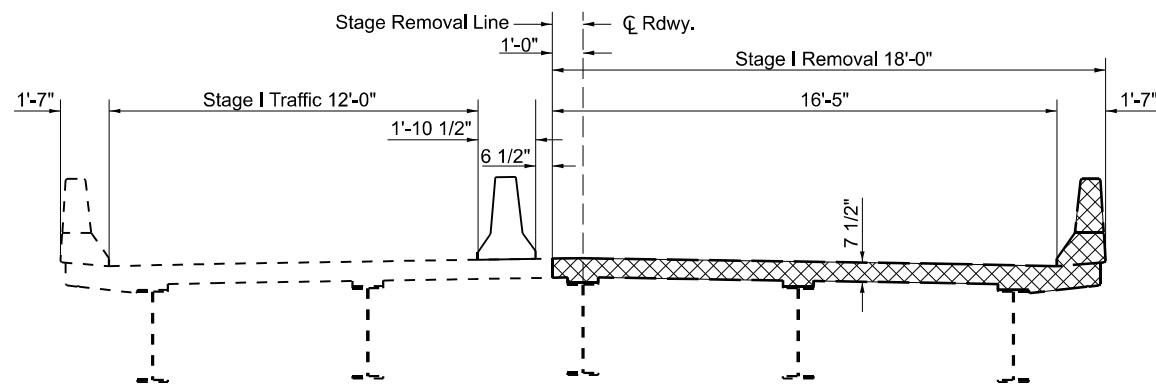
F.A.P. RTE.	SECTION	COUNTY	TOTAL SHEETS	SHEET NO.
782	D9 BRIDGE OVERLAY 2023-2	GALLATIN	21	7
CONTRACT NO. 78920			ILLINOIS FED. AID PROJECT	



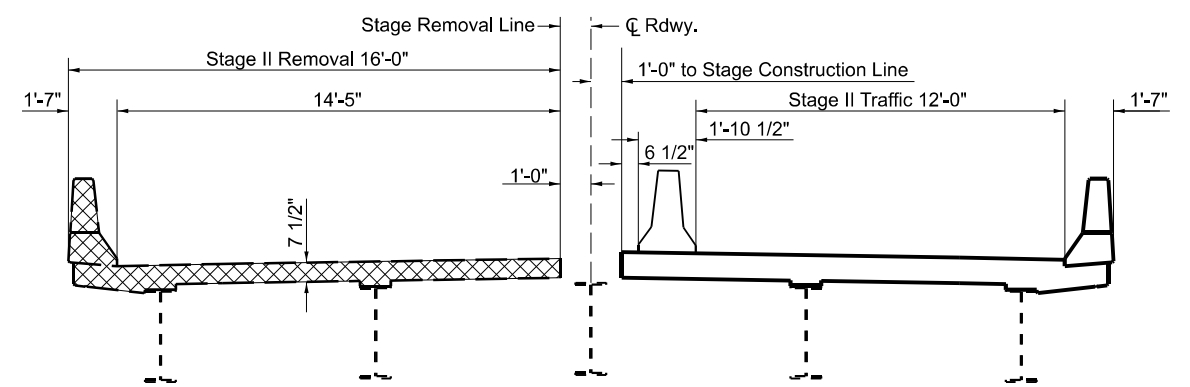
TYPICAL BRIDGE SECTION - EXISTING



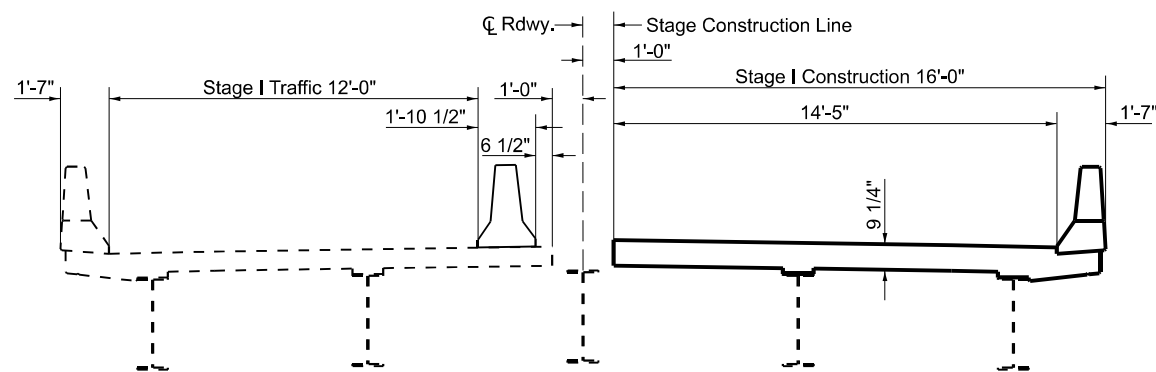
TYPICAL BRIDGE SECTION - PROPOSED



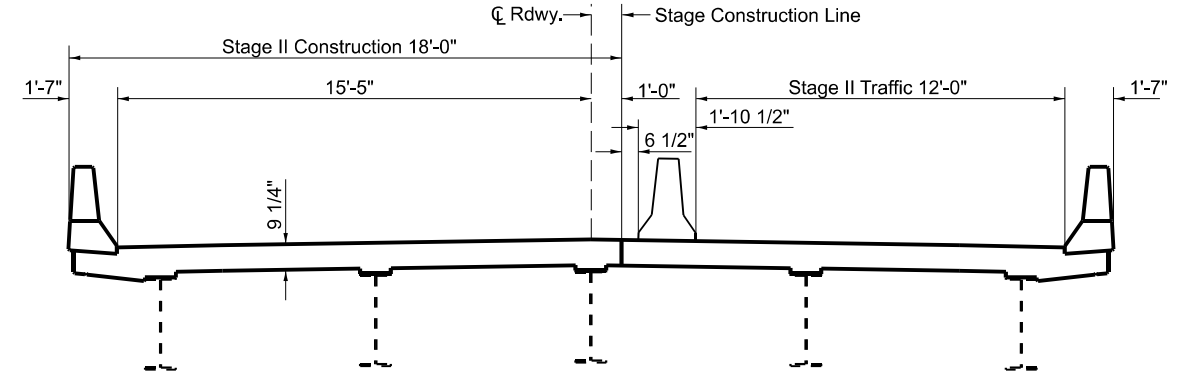
STAGE I REMOVAL
(AT JOINT LOCATIONS ONLY)



STAGE II REMOVAL
(AT JOINT LOCATIONS ONLY)



STAGE I CONSTRUCTION
(AT JOINT LOCATIONS ONLY)



STAGE II CONSTRUCTION
(AT JOINT LOCATIONS ONLY)

Concrete Removal

Notes: All Sections Looking South

MODEL: P:\In-Sheet 8 (Sheet) \P\103024\Drawings\DOT\Office\District 9\BDD\Projects\78920\ICOD\data\ICODsheets\0978920-SNH-Stamping.dgn
 FILE NAME: P:\103024\Drawings\DOT\Office\District 9\BDD\Projects\78920\ICOD\data\ICODsheets\0978920-SNH-Stamping.dgn

USER NAME = derek.snider	DESIGNED -	REVISED -
	DRAWN -	REVISED -
PLOT SCALE = \$SCALE\$	CHECKED -	REVISED -
PLOT DATE = 2/22/2024	DATE -	REVISED -

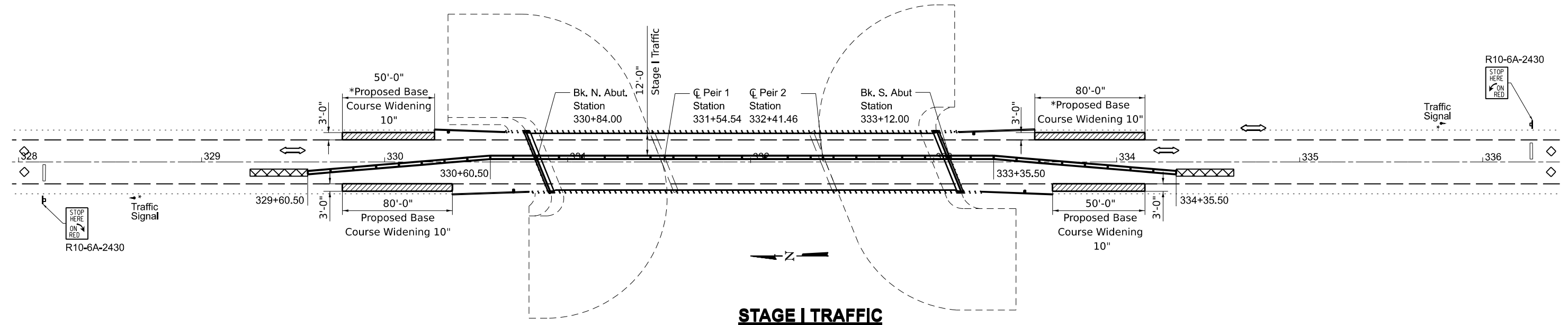
STATE OF ILLINOIS
DEPARTMENT OF TRANSPORTATION

TYPICAL SECTIONS
SN 030-0020

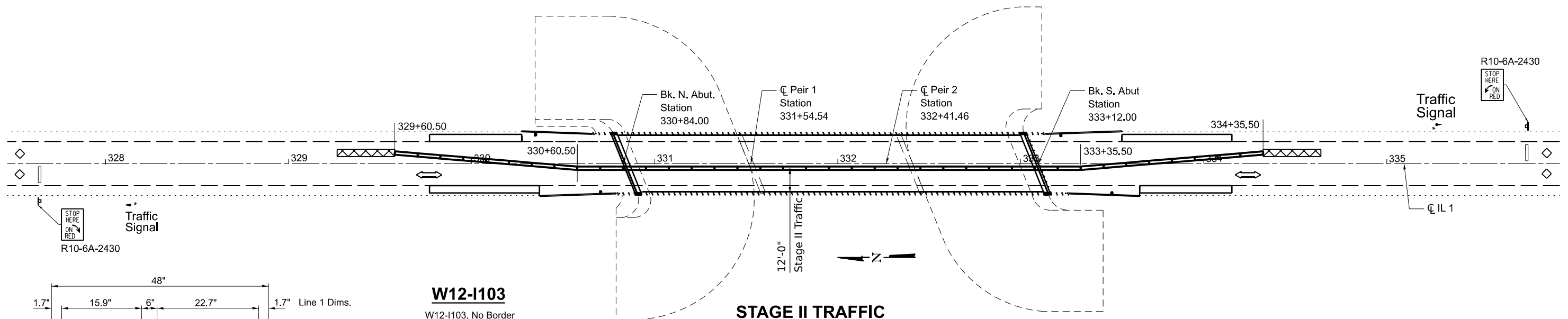
SCALING SCALE SHEET OF SHEETS STA. TO STA.

F.A.P. RTE.	SECTION	COUNTY	TOTAL SHEETS	SHEET NO.
782	D9 BRIDGE OVERLAY 2023-2	GALLATIN	21	8
CONTRACT NO. 78920			ILLINOIS FED. AID PROJECT	

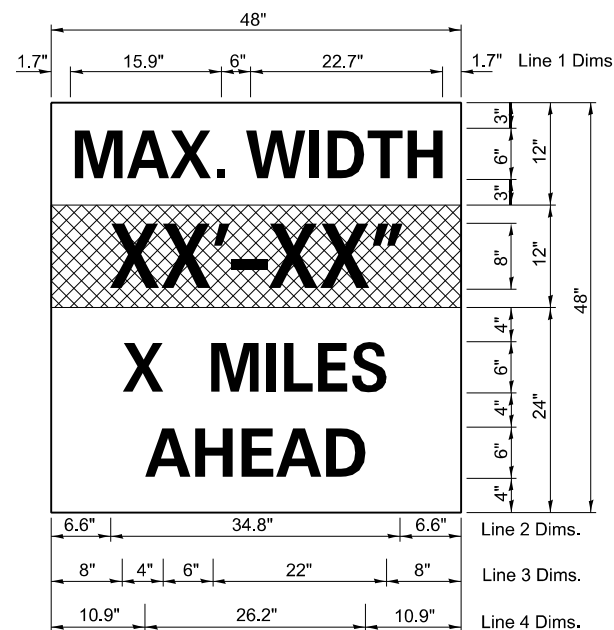
* Must be installed pre stage I under traffic standard 701326.



STAGE I TRAFFIC



STAGE II TRAFFIC



W12-I103

W12-I103, No Border
 "MAX WIDTH" 6D, No Border, Black on White
 "XX'-XX'" 8D, No Border, Black on Orange
 "X MILES" 6D, No Border, Black on White
 "AHEAD" 6D, No Border, Black on White

Notes for Max Width Sign:

1. Install a Max Width Sign each direction on IL 1 to give traffic approaching work zone enough advance notice to change routes if needed. Exact locations as directed by engineer.
2. The contractor shall furnish the posts and erect the signs at the locations directed by the engineer. All signs shall be post mounted.
3. The noted work, including signs, posts, hardware and labor shall be included in the contract unit price, each, for Traffic Control and Protection, Std. 701321, no other compensation will be allowed.
4. The width shown on the W12-I103 sign shall be 18" less than what is shown in the staged lane widths or as directed by the Engineer.
5. The "X" MILES AHEAD will be determined by the engineer.

LEGEND:

Impact Attenuator

MODEL: P:\in Sheet 9 (Sheet) FILE NAME: P:\in Sheet 9 (Sheet) \P\in Sheet 9 (Sheet) \DOT\Office\District 9\BDD\Projects\78920\IC\Drawings\03\78920-SNH-Stamping.dgn

USER NAME = derek.snider	DESIGNED -	REVISED -
PLOT SCALE = \$SCALE\$	DRAWN -	REVISED -
PLOT DATE = 2/22/2024	CHECKED -	REVISED -
	DATE -	REVISED -

**STATE OF ILLINOIS
DEPARTMENT OF TRANSPORTATION**

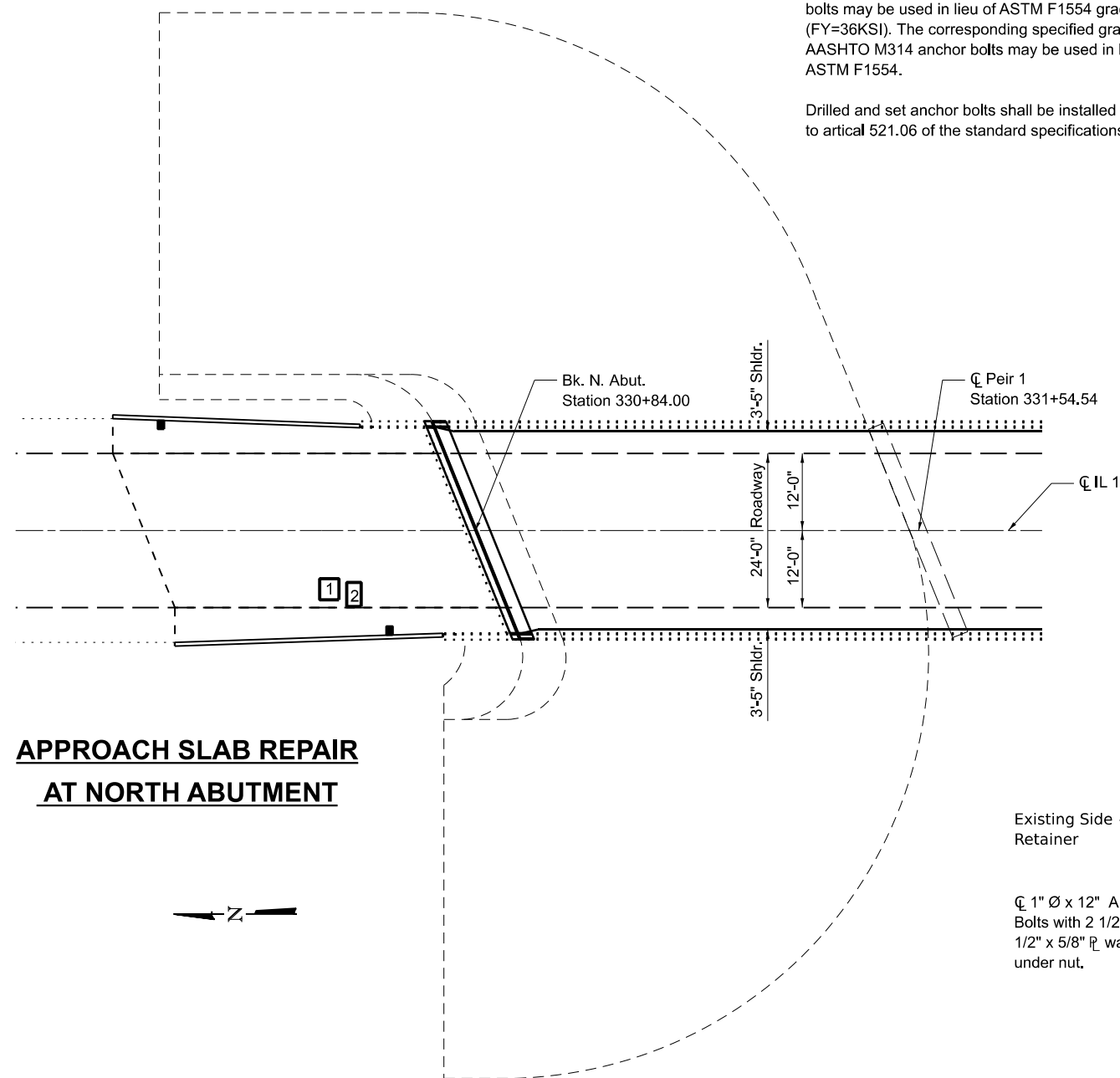
**STAGING PLAN
SN 030-0020**

SCALE: SHEET OF SHEETS STA. TO STA.

F.A.P. RTE.	SECTION	COUNTY	TOTAL SHEETS	SHEET NO.
782	D9 BRIDGE OVERLAY 2023-2	GALLATIN	21	9
CONTRACT NO. 78920			ILLINOIS FED. AID PROJECT	

Notes:
Anchor bolts shall be ASTM F1554 all thread (or an engineer approved alternative material) of the grade and diameter specified. ASTM A307 Grade C anchor bolts may be used in lieu of ASTM F1554 grade 36 (FY=36KSI). The corresponding specified grade of AASHTO M314 anchor bolts may be used in lieu of ASTM F1554.

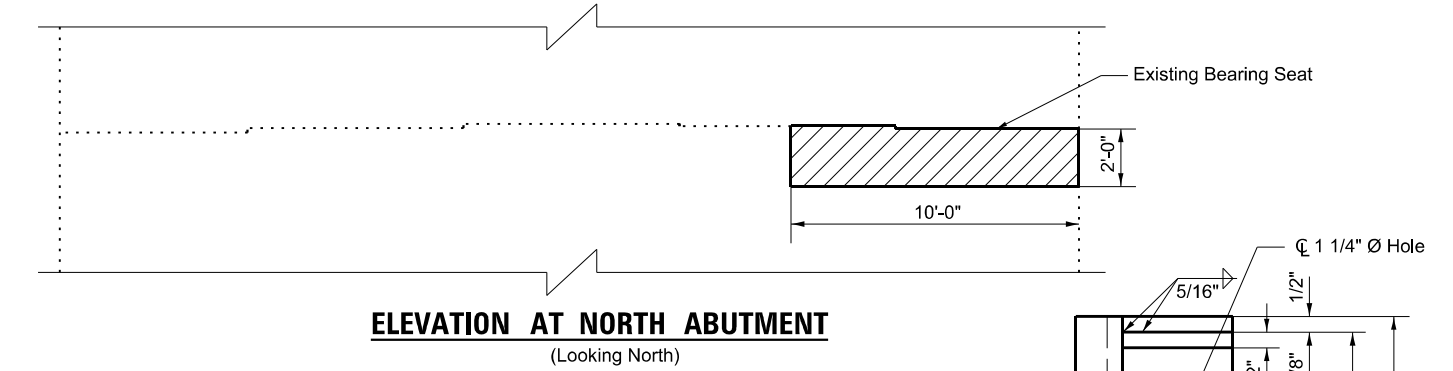
Drilled and set anchor bolts shall be installed according to artical 521.06 of the standard specifications.



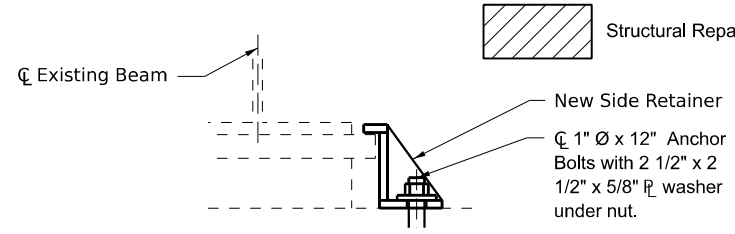
**APPROACH SLAB REPAIR
AT NORTH ABUTMENT**

Approch Slab Repair			
Number	Length (ft)	Width (ft)	Area (Sq. Yd.)
1	2.0	2.2	0.489
2	1.5	2.5	0.417
Total			0.906

Notes: The Engineer will determine final patch locations and quantities in the field before bridge deck and approach slab patching operations begin.

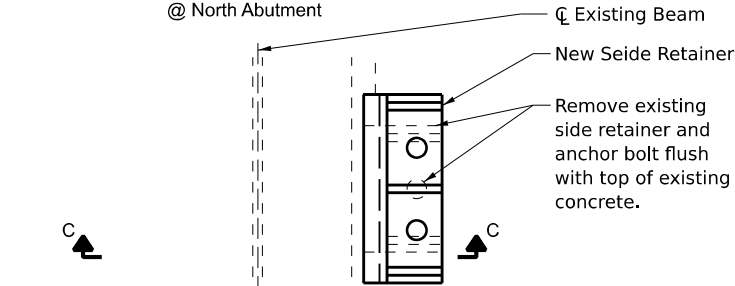


**ELEVATION AT NORTH ABUTMENT
(Looking North)**



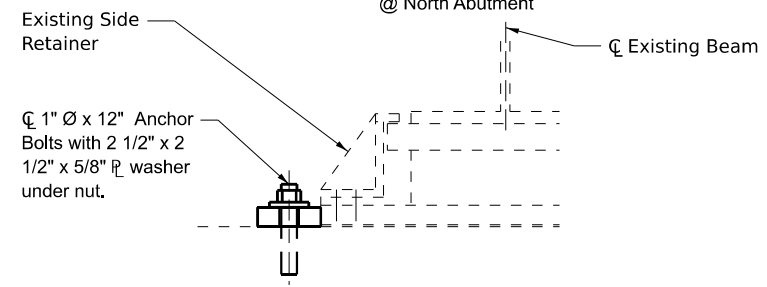
Bearing Section C-C

Replace Retainers @ North Abutment



Bearing Plan

Replace Retainers @ North Abutment

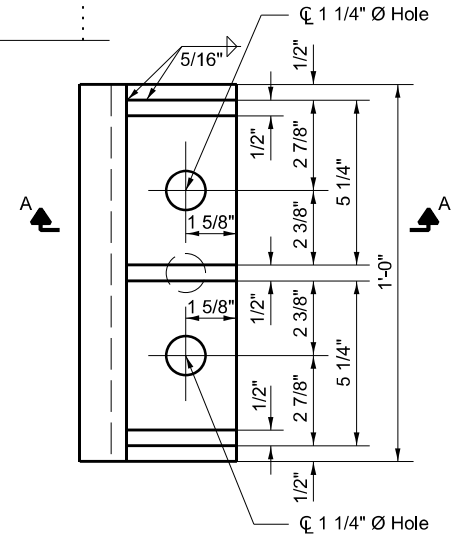


Bearing Section B-B

Anchor Plate @ South Abutment

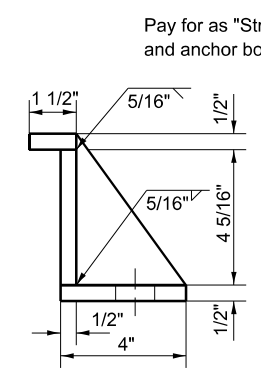
Bearing Plan

10 New Anchor Plates @ South Abutment

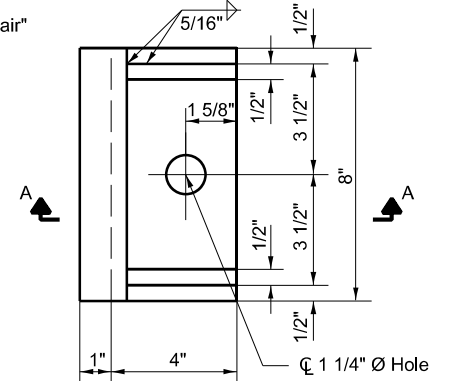


Replacement Side Retainer Plan

Replace 2 Side Retainers @ North Abutment



Side Retainer Section A-A



Additional Side Retainer Plan

8 Additional Side Retainers @ North Abutment

BILL OF MATERIAL

ITEM	UNIT	TOTAL
Approach Slab Repair (Partial Depth)	Sq. Yd.	0.9
Structural Repair of Concrete (Depth ≤ 5 Inches)	Sq. Ft.	20
Structural Steel Repair	Pound	241

MODEL: P1m Sheet 10 (Sheet)
FILE NAME: P:\GIS\Projects\DOT\Office\District 9\BDD Projects\78920\CAD\Drawings\CAD\Drawings\DOT\78920-SNH-Stamping.dgn

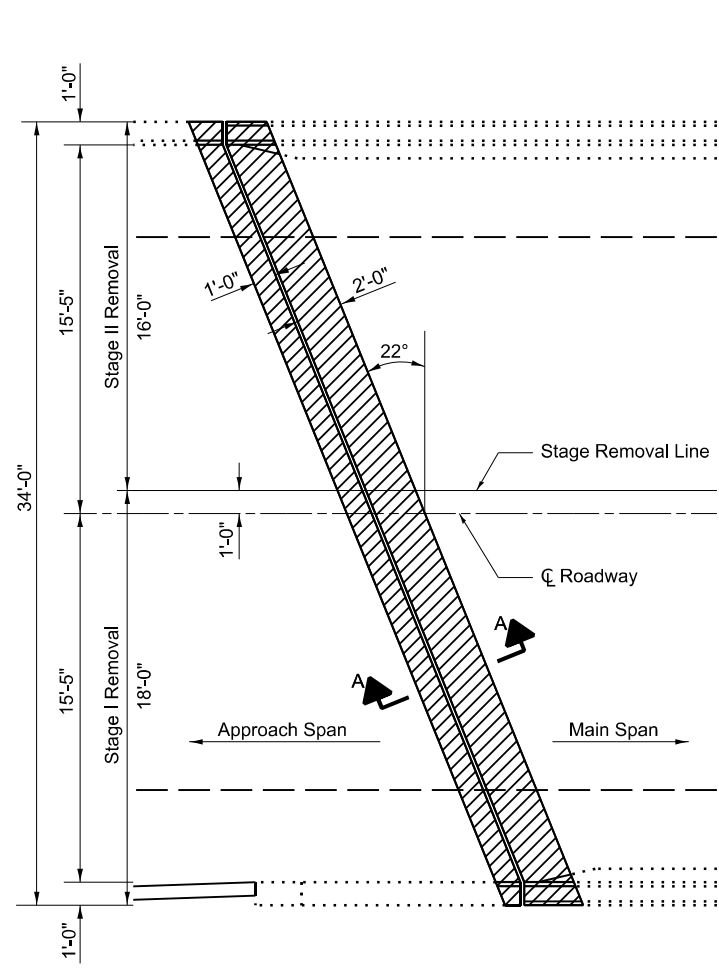
USER NAME = derek.snider	DESIGNED -	REVISED -
PLOT SCALE = \$SCALE\$	DRAWN -	REVISED -
PLOT DATE = 3/19/2024	CHECKED -	REVISED -
	DATE -	REVISED -

**STATE OF ILLINOIS
DEPARTMENT OF TRANSPORTATION**

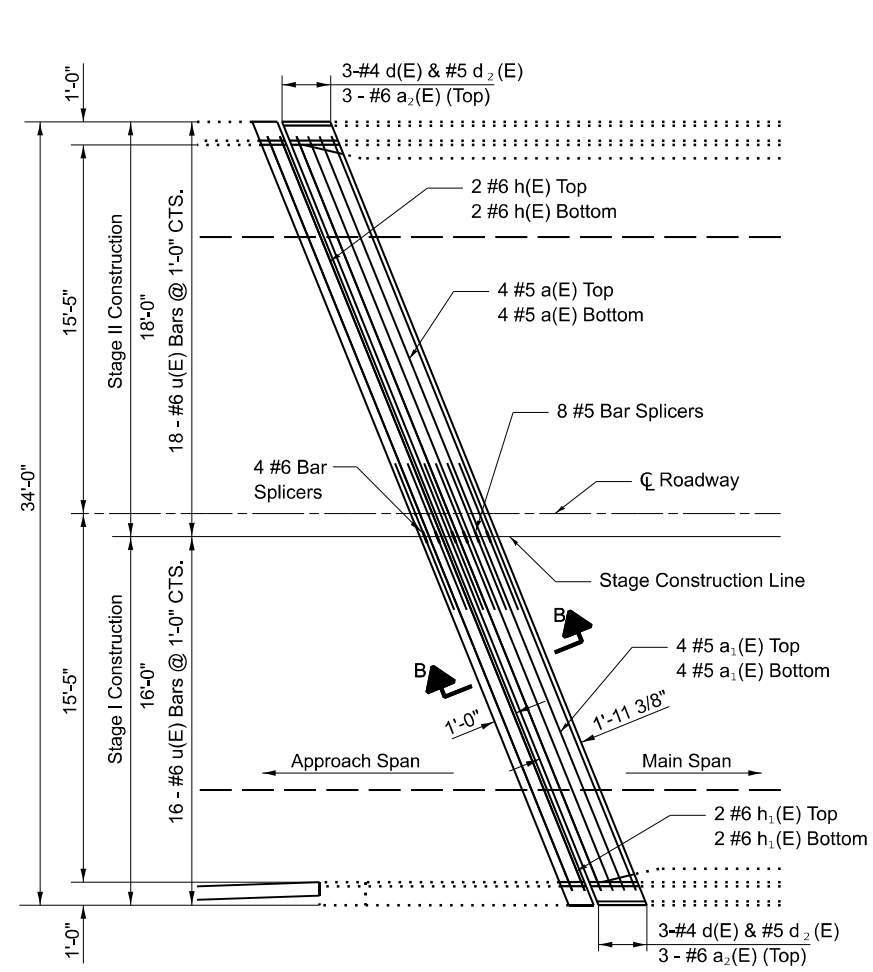
**APPROCH SLAB PATCHING & STRUCTUAL REPAIR OF CONC
SN 030-0020**

SCALE: SHEET OF SHEETS STA. TO STA.

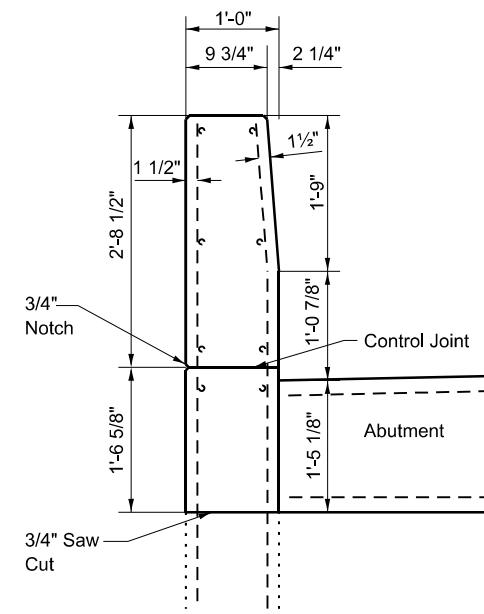
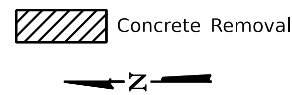
F.A.P. RTE.	SECTION	COUNTY	TOTAL SHEETS	SHEET NO.
782	D9 BRIDGE OVERLAY 2023-2	GALLATIN	21	10
CONTRACT NO. 78920				
ILLINOIS FED. AID PROJECT				



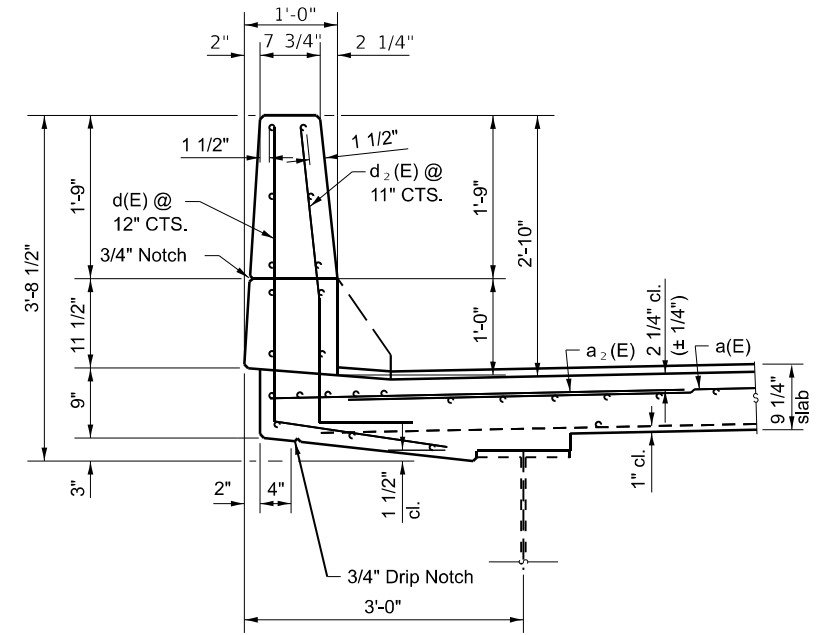
**JOINT AT NORTH ABUTMENT
SHOWING CONCRETE REMOVAL
(SOUTH ABUTMENT SIMILAR)**



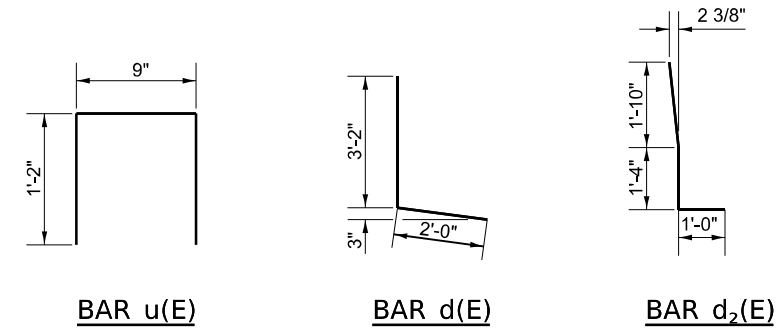
**JOINT AT NORTH ABUTMENT
SHOWING NEW CONCRETE
(SOUTH ABUTMENT SIMILAR)**



SECTION THROUGH WINGWALL

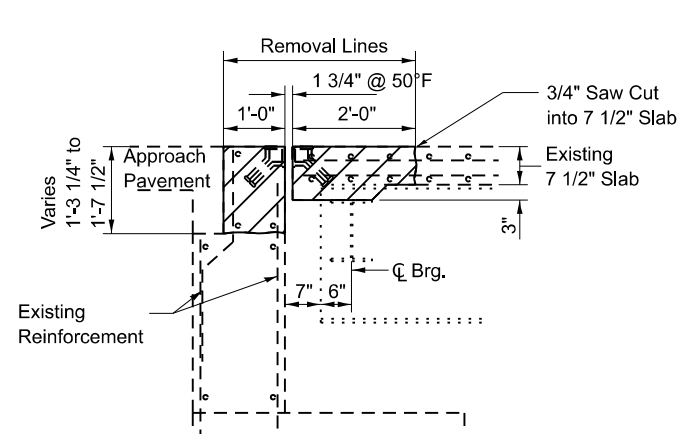


SECTION THROUGH PARAPET

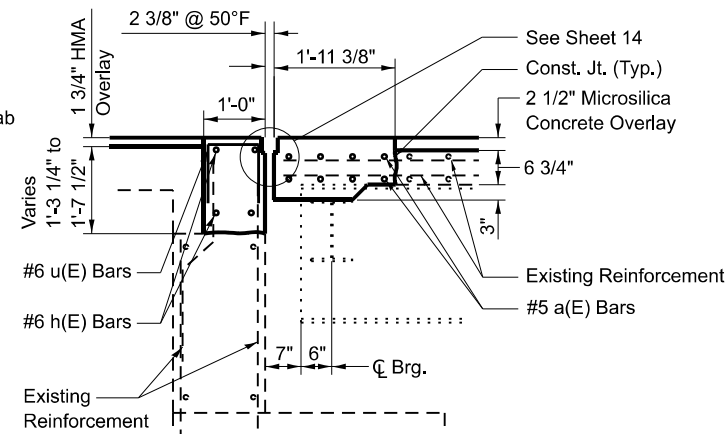


BILL OF MATERIAL (BOTH ABUTMENT)

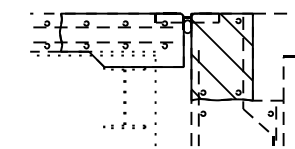
Bar	No.	Size	Length	Shape
a(E)	16	#5	18'-8"	—
a ₁ (E)	16	#5	16'-8"	—
a ₂ (E)	12	#6	4'-0"	—
d(E)	12	#4	5'-4"	L
d ₂ (E)	12	#5	5'-4"	L
h(E)	8	#6	18'-8"	—
h ₁ (E)	8	#6	16'-8"	—
u(E)	68	#6	1'-11"	□
Bar Splicer		Each	24	
Concrete Superstructure		Cu. Yd.	10.7	
Concrete Removal		Cu. Yd.	9.7	
Reinforcement Bars, Epoxy Coated		Pound	1330	



SECTION A-A
(Dimensions are at Right Angles)



SECTION B-B
(Dimensions are at Right Angles)



SOUTH ABUTMENT
(Existing silicone joint with polymer nosing)

**JOINT RECONSTRUCTION DETAILS
IL 1 OVER LAWLER DITCH
FAP 782 - D9 BRIDGE OVERLAY 2023-2
GALLATIN COUNTY
STRUCTURE NO. 030-0020**

MODEL: P:\in Sheet 11 (Sheet) FILE NAME: P:\il1\p782\bridge\documents\DOT\Office\District 9\BDD Projects\78220\CD\Drawings\CD\Sheets\0378920-SNH-Stamping.dgn

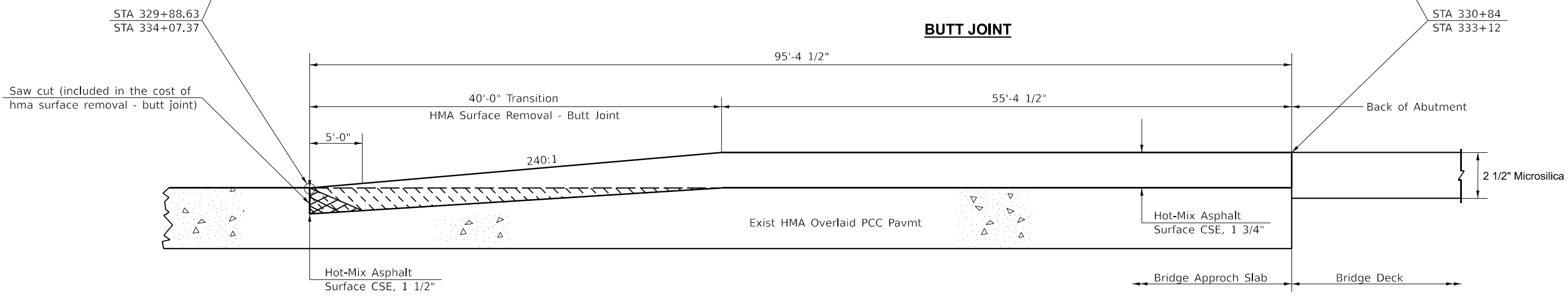
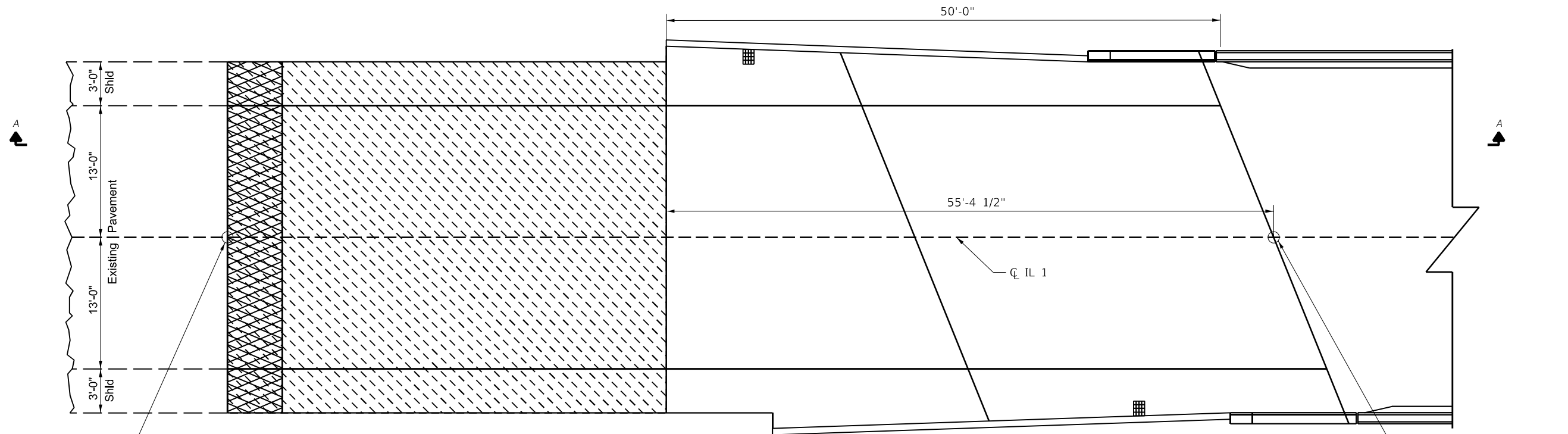
USER NAME = derek.snider	DESIGNED -	REVISED -
PLOT SCALE = \$SCALE\$	DRAWN -	REVISED -
PLOT DATE = 2/22/2024	CHECKED -	REVISED -
	DATE -	REVISED -

**STATE OF ILLINOIS
DEPARTMENT OF TRANSPORTATION**

**JOINT RECONSTRUCTION DETAILS
SN 030-0020**

SCALE: SHEET OF SHEETS STA. TO STA.

F.A.P. RTE.	SECTION	COUNTY	TOTAL SHEETS	SHEET NO.
782	D9 BRIDGE OVERLAY 2023-2	GALLATIN	21	11
CONTRACT NO. 78920				
ILLINOIS		FED. AID PROJECT		



SECTION A-A

-  Temporary Ramp
-  HMA Surface Removal Butt Joint

MODEL: P:\in Sheet 12 (Sheet)
 FILE NAME: P:\in Sheet 12 (Sheet)\DOT_0fficer\District_9\BDD_Projects\78920\CADdata\CADsheets\0978920-SNH-Stamping.dgn

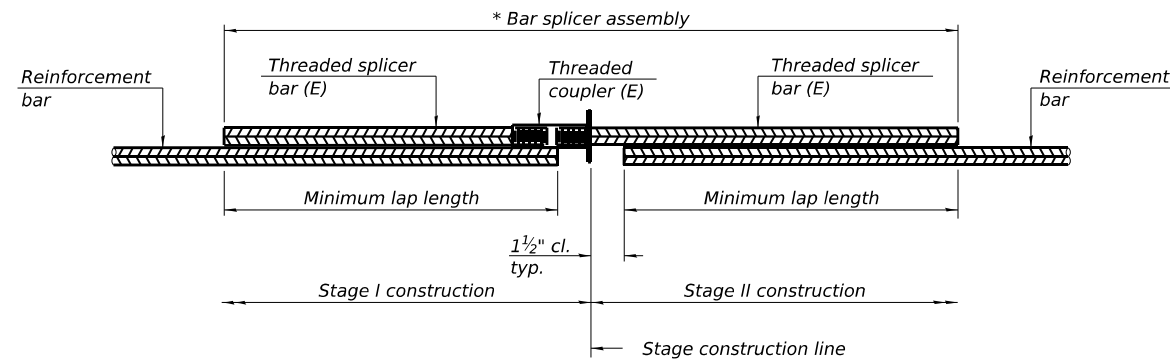
USER NAME = derek.snider	DESIGNED -	REVISED -
PLOT SCALE = \$SCALE\$	DRAWN -	REVISED -
PLOT DATE = 2/22/2024	CHECKED -	REVISED -
	DATE -	REVISED -

**STATE OF ILLINOIS
DEPARTMENT OF TRANSPORTATION**

**BUTT JOINT DETAIL
SN 030-0020**

SCALE: SHEET OF SHEETS STA. TO STA.

F.A.P. RTE.	SECTION	COUNTY	TOTAL SHEETS	SHEET NO.
782	D9 BRIDGE OVERLAY 2023-2	GALLATIN	21	12
CONTRACT NO. 78920				
ILLINOIS FED. AID PROJECT				



STANDARD BAR SPLICER ASSEMBLY PLAN

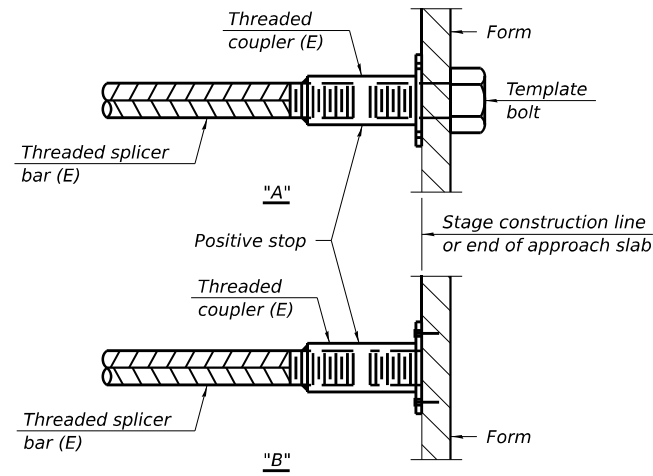
Only bar splicer assemblies as presented on the approved QPL list may be used.

Threaded splicer bar length = min. lap length + 1 1/2" + thread length

* Epoxy not required on Bar Splicer Assembly components used in conjunction with black bars.

SN 030-0020			
Location	Bar size	No. assemblies required	Minimum lap length
Deck	#5	16	3'-6"
Hatchblock	#6	8	4'-0"

SN 030-0021			
Location	Bar size	No. assemblies required	Minimum lap length
Deck	#5	16	3'-6"
Hatchblock	#6	8	4'-0"

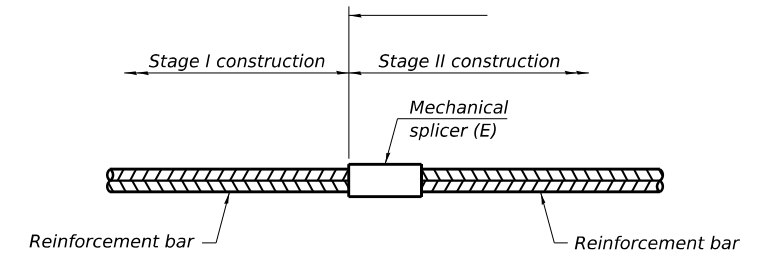


INSTALLATION AND SETTING METHODS

"A" : Set bar splicer assembly by means of a template bolt.

"B" : Set bar splicer assembly by nailing to wood forms or cementing to steel forms.

(E) : Indicates epoxy coating.



STANDARD MECHANICAL SPLICER

Location	Bar size	No. assemblies required

Notes:
 Splicer bars shall be deformed with threaded ends and have a minimum 60 ksi yield strength.
 All reinforcement shall be lapped and tied to the splicer bars.
 Bar splicer assemblies shall be epoxy coated according to the requirements for reinforcement bars. See Section 508 of the Standard Specifications.
 See approved list of bar splicer assemblies and mechanical splicers for alternatives.

BSD-1

5-15-2023

MODEL: P:\In-Sheet\13 (Sheet)
 FILE NAME: P:\In-Sheet\13 (Sheet)\13 (Sheet).dgn
 PROJECT: P:\In-Sheet\13 (Sheet)\13 (Sheet).dgn
 USER: derek.snider
 DATE: 2/22/2024

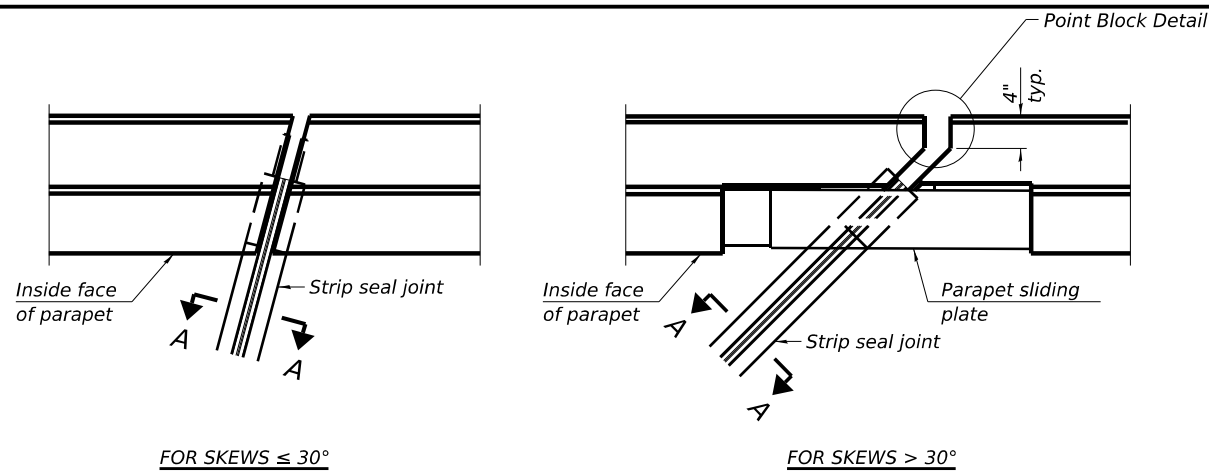
USER NAME = derek.snider	DESIGNED -	REVISED -
PLOT SCALE = \$SCALE\$	DRAWN -	REVISED -
PLOT DATE = 2/22/2024	CHECKED -	REVISED -
	DATE -	REVISED -

**STATE OF ILLINOIS
 DEPARTMENT OF TRANSPORTATION**

**BAR SPLICER ASSEMBLY DETAILS
 SN 030-0020 & SN 030-0021**

SCALE: SHEET OF SHEETS STA. TO STA.

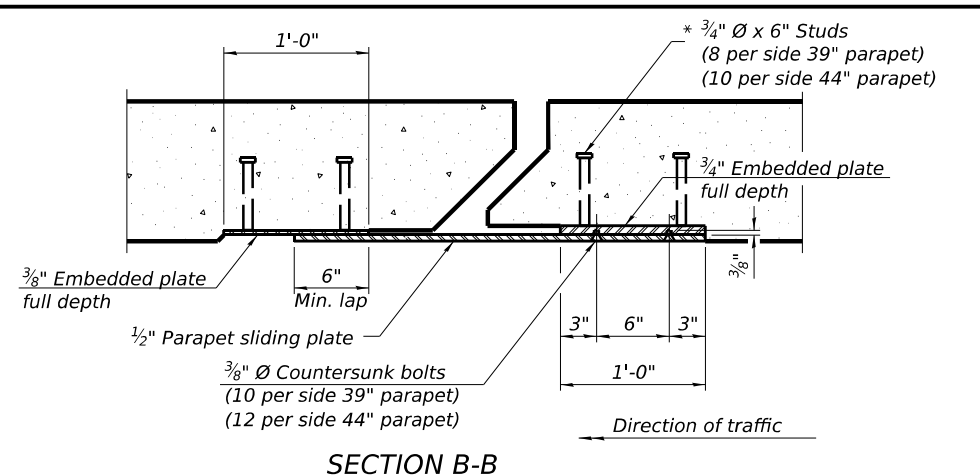
F.A.P. RTE.	SECTION	COUNTY	TOTAL SHEETS	SHEET NO.
782	D9 BRIDGE OVERLAY 2023-2	GALLATIN	21	13
CONTRACT NO. 78920			ILLINOIS FED. AID PROJECT	



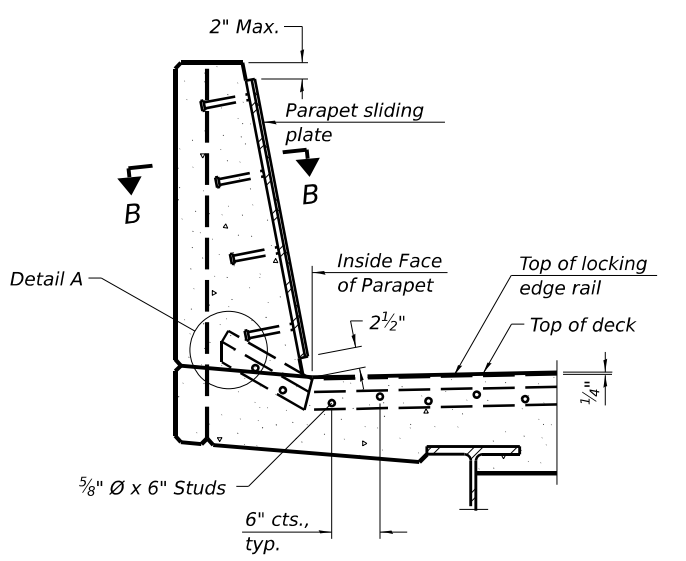
FOR SKEWS ≤ 30°

FOR SKEWS > 30°

PLAN AT PARAPET

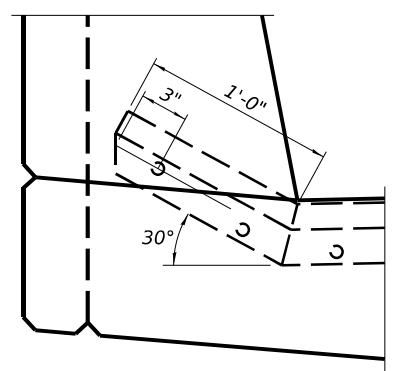


SECTION B-B

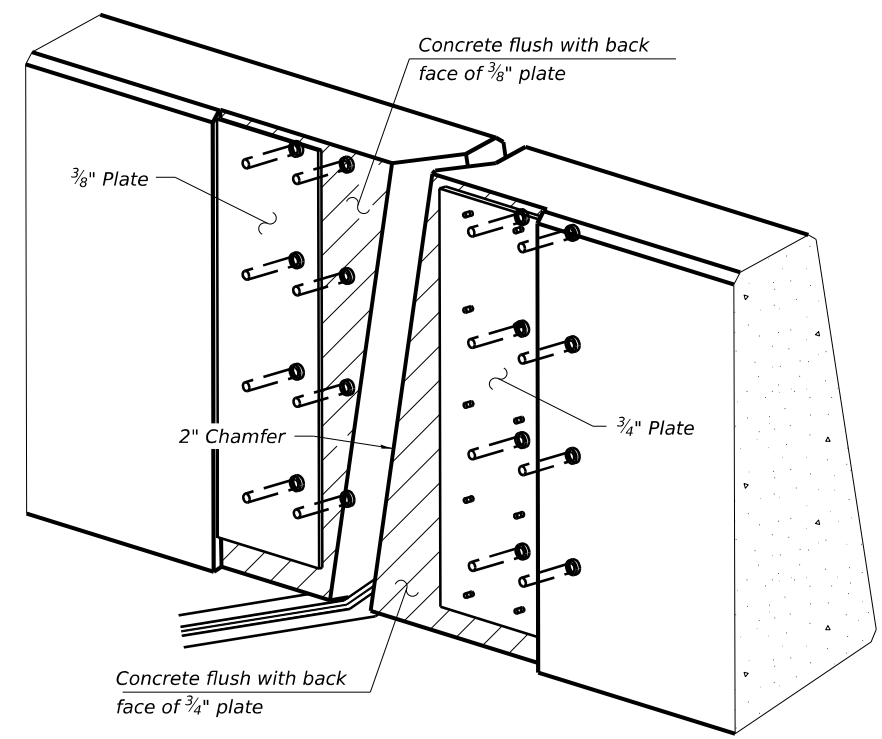


SECTION AT PARAPET

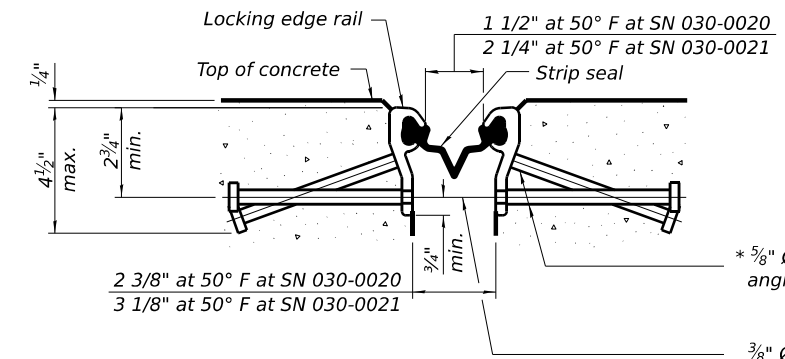
(Skews > 30° shown. Skews ≤ 30° similar except as shown in plan view.)



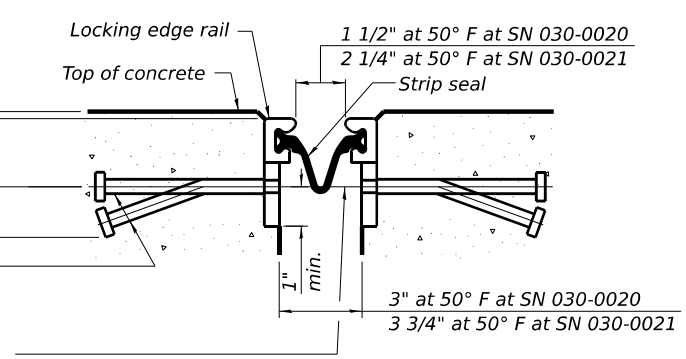
DETAIL A



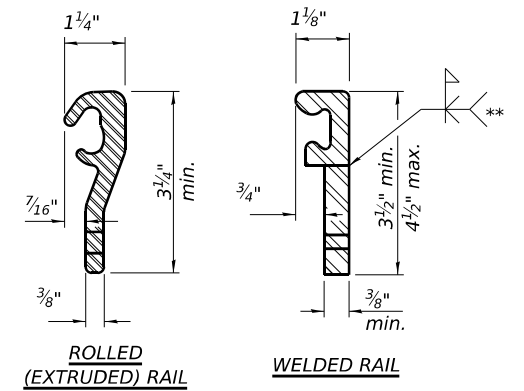
TRIMETRIC VIEW
(Showing embedded plates only)



SHOWING ROLLED RAIL JOINT

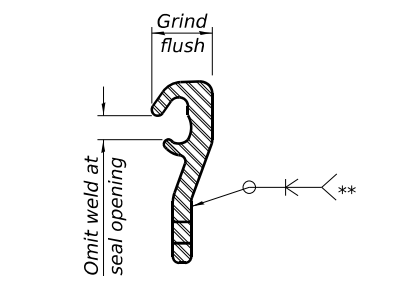


SHOWING WELDED RAIL JOINT



LOCKING EDGE RAILS

** Back gouge not required if complete joint penetration is verified by mock-up.



LOCKING EDGE RAIL SPLICE

The inside of the locking edge rail groove shall be free of weld residue. Rolled rail shown, welded rail similar.

BILL OF MATERIAL

Item	Unit	Total
Preformed Joint Strip Seal	Foot	135

Notes:
 The strip seal shall be made continuous and shall have a minimum thickness of 1/4". The configuration of the strip seal shall match the configuration of the locking edge rails. Open or "webbed" strip seal gland configurations are not permitted. The gland shall be sized for a maximum rated movement of 4 inches.
 The locking edge rails depicted are configured for typical applications and are conceptual only. The actual configuration of the locking edge rails and matching strip seal may vary from manufacturer to manufacturer provided they fit the application and meet the minimum anchorage shown. Flanged edge rails, however, will not be allowed. Locking edge rails may exceed the 4 1/2" maximum depth provided the anchorage system is revised according to the manufacturer's recommendation.
 The manufacturer's recommended installation methods shall be followed.
 All steel components shall be galvanized after fabrication according to Article 520.03 of the Standard Specifications.
 The Maximum space between locking edge rail segments shall be c" and sealed with a suitable sealant; however, any rail joint within 10' measured perpendicular to the face of the curb or parapet shall be welded as shown in the locking edge rail splice detail.
 Cost of parapet sliding plates, embedded plates, and anchorage studs included with Preformed Joint Strip Seal.
 39" constant slope barrier shown, 44" constant slope barrier similar as noted.
 The concrete opening below the strip seal will vary based on the locking edge rail chosen by the Contractor. Deck and parapet lengths shown elsewhere in the plans are dimensioned to the concrete opening, not the joint opening, and are based on the rolled locking edge rail. If the Contractor elects to use a different locking edge rail, dimensional adjustments may be required. One exception to this would be the strip seal joint at the end of the precast bridge approach slab. For these cases the pavement connector length shall be adjusted, not the length of the bridge approach slab.

MODEL: P1m Sheet 1.1 (Sheet)
 FILE NAME: P:\GIS\Projects\78920\CD\Drawings\DOT\Office\District 9\BDD\Projects\78920\CD\Drawings\DOT\Office\District 9\BDD\Projects\78920-SNH-Strapling.dgn

EJ-SS 15-15-2023

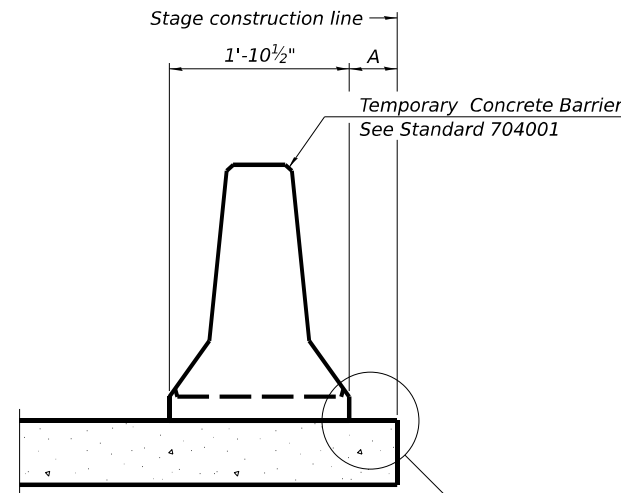
USER NAME = derek.snider	DESIGNED -	REVISED -
PLOT SCALE = \$SCALE\$	DRAWN -	REVISED -
PLOT DATE = 2/22/2024	CHECKED -	REVISED -
	DATE -	REVISED -

STATE OF ILLINOIS
DEPARTMENT OF TRANSPORTATION

PREFORMED JOINT STRIP SEALS
SN 030-0020 & SN 030-0021

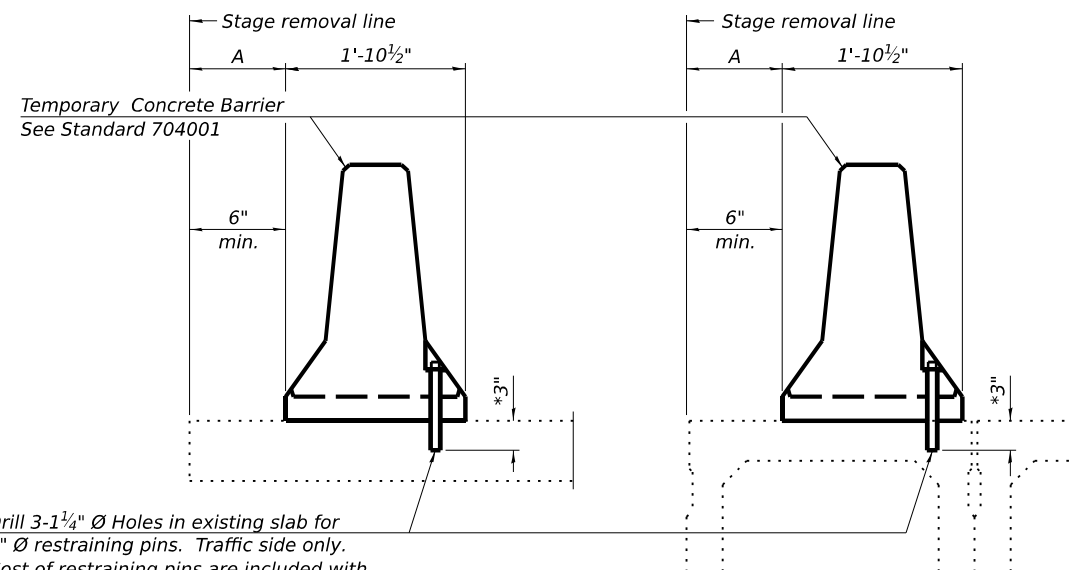
SCALE: SHEET OF SHEETS STA. TO STA.

F.A.P. RTE.	SECTION	COUNTY	TOTAL SHEETS	SHEET NO.
782	D9 BRIDGE OVERLAY 2023-2	GALLATIN	21	14
ILLINOIS			FED. AID PROJECT	



When "A" is 3'-1" or less, the temporary concrete barrier shall be restrained to the new slab according to Detail I, II or III. No restraint is required when "A" is greater than 3'-1".

NEW SLAB OR NEW DECK BEAM



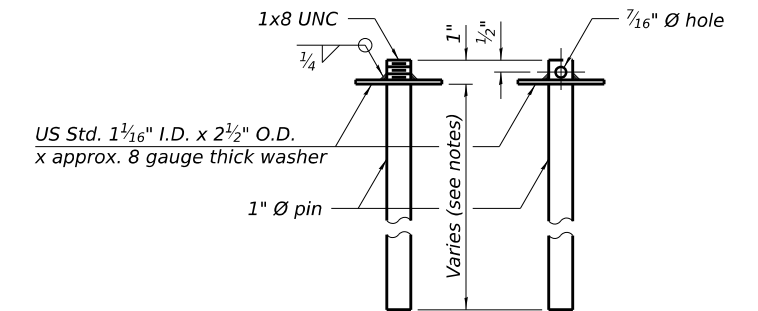
Drill 3-1 1/4" Ø Holes in existing slab for 1" Ø restraining pins. Traffic side only. Cost of restraining pins are included with Temporary Concrete Barrier. No restraint is required when "A" is greater than 3'-1".

EXISTING SLAB

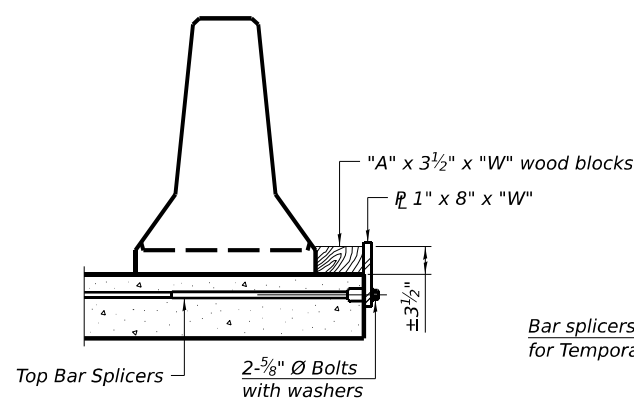
* When hot-mix asphalt wearing surface is present, embedment shall be 3" plus the wearing surface depth.

EXISTING DECK BEAM

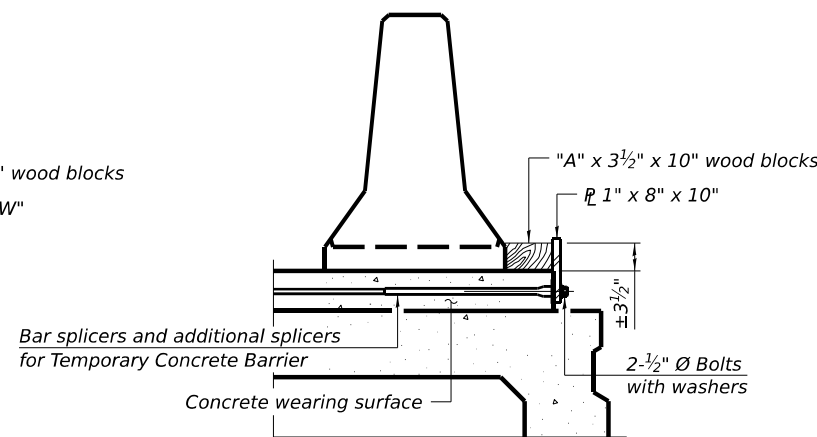
SECTIONS THRU SLAB OR DECK BEAM



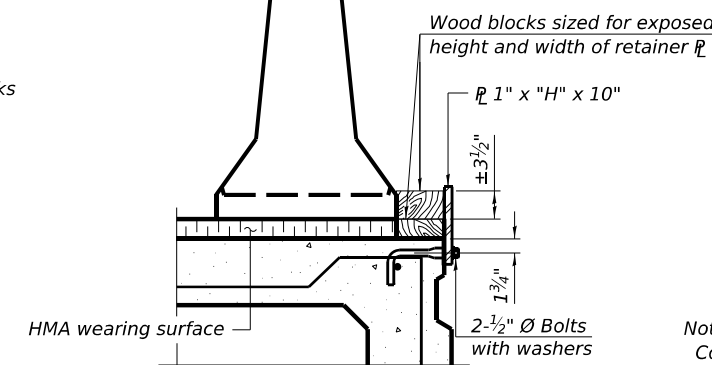
RESTRAINING PIN



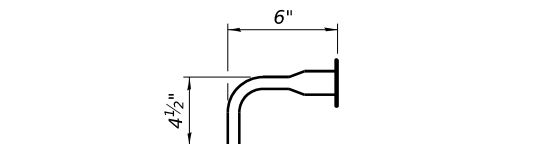
DETAIL I



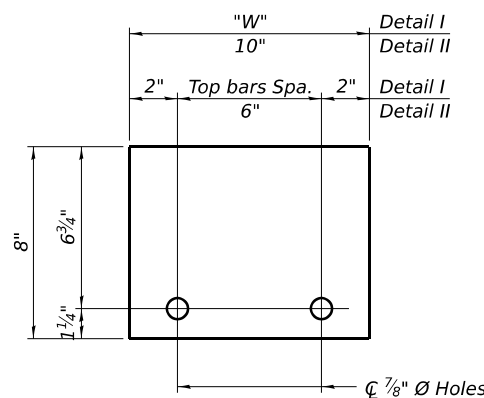
DETAIL II



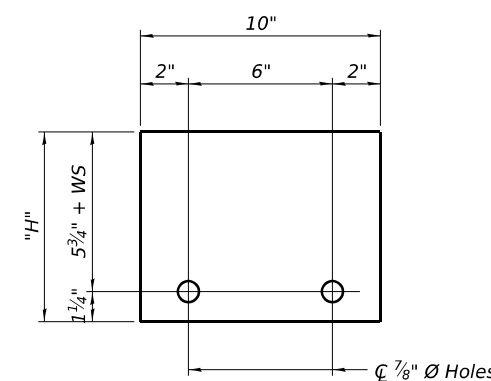
DETAIL III



BAR SPLICER FOR #4 BAR - DETAIL III



STEEL RETAINER 1" x 8" x "W"
(Detail I and II)



STEEL RETAINER 1" x "H" x 10"
(Detail III)

Notes:
 Cost of retainer assembly is included with Temporary Concrete Barrier.
 A retainer assembly shall be located at the approximate \bar{C} of each temporary concrete barrier.
 The retainer plate shall not be removed until the concrete on the adjacent stage is ready to be poured. For Detail III applications the retainer plate shall not be removed until just prior to placing the adjacent beam.
 When the 'A' dimension is less than 1 1/2", the wood block shall be omitted and the barrier shall be placed in direct contact with the steel retainer plate. For deck beam applications the minimum required 'A' distance is 6" to accommodate the shear key clamping device.

Detail I - Installation for a new bridge deck or bridge slab.
Detail II - Installation for a new deck beam with an initial concrete wearing surface. Additional bar splicers shall be provided at 6'-0" centers and paired with the bar splicers of the concrete wearing surface reinforcement to accommodate the installation of the retainer assemblies. The cost of the additional bar splicers is included with the concrete wearing surface.
Detail III - Installation for a new deck beam with no initial wearing surface or with an initial hot-mix asphalt (HMA) wearing surface present. The deck beam directly beneath the temporary concrete barrier shall be fabricated with bar splicer inserts in the side of the beam, as detailed, to accommodate the installation of the retainer assemblies. A pair of bar splicers, 6" apart, shall be placed at 6'-0" centers along the length of the beam. The cost of the bar splicers is included with the deck beam.

RAILING CRITERIA

NCHRP 350 Test Level	3
Railing Weight (plf)	440

R-27 5-15-2023

USER NAME = derek.snider	DESIGNED -	REVISED -
PLOT SCALE = \$SCALE\$	DRAWN -	REVISED -
PLOT DATE = 2/22/2024	CHECKED -	REVISED -
	DATE -	REVISED -

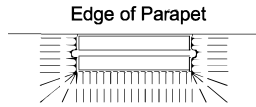
**STATE OF ILLINOIS
DEPARTMENT OF TRANSPORTATION**

**TEMPORARY CONCRETE BARRIER
FOR STAGE CONSTRUCTION**

SCALE: SHEET OF SHEETS STA. TO STA.

F.A.P. RTE.	SECTION	COUNTY	TOTAL SHEETS	SHEET NO.
782	D9 BRIDGE OVERLAY 2023-2	GALLATIN	21	15
ILLINOIS FED. AID PROJECT			CONTRACT NO. 78920	

MODEL: Rtn Sheet 15 (Sheet)
FILE NAME: P:\Info\pawley\com\PMIDOT\Documents\DOT\Office\District 9\BDD Projects\78920\CAD\data\CADsheets\0978920-SNH-Stamping.dgn



FLOOR DRAIN

Slope Overlay at Drains
66 Total Drains at Bridge Deck

GENERAL NOTES

Reinforcement bars designated (E) shall be epoxy coated.

Prior to pouring the new concrete deck, all heavy or loose rust, loose mill scale, and other loose or potentially detrimental foreign material shall be removed from the surfaces in contact with concrete. Tightly adhered paint may remain unless otherwise noted. Removal shall be accomplished by methods that will not damage the steel and the cost will be included in the pay item covering removal of the existing concrete.

Plan dimensions and details relative to existing plans are subject to nominal construction variations. The Contractor shall field verify existing dimensions and details affecting new construction and make necessary approved adjustments prior to construction or ordering of materials. Such variations shall not be cause for additional compensation for a change in scope of the work, however, the Contractor will be paid for the quantity actually furnished at the unit price bid for the work.

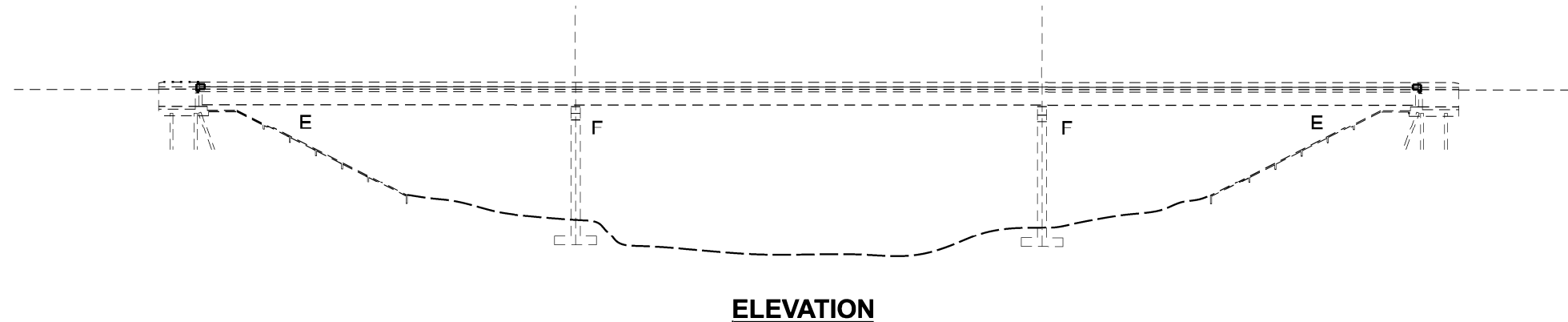
Existing reinforcement bars extending into the removal area shall be cleaned, straightened and incorporated into the new construction. Any reinforcement bars that are damaged during concrete removal shall be replaced with an approved bar splicer or anchorage system. Cost included with Concrete Removal.

Joint openings shall be adjusted according to Article 520.04 of the Std. Specs. when the deck is poured at an ambient temperature other than 50°F.

All structural steel shall conform to AASHTO Classification M-270 Gr. 50, unless otherwise noted.

All new structural steel and bearing assembly shall be hot-dip galvanized. See special Provisions for "Hot Dip Galvanizing for Structural Steel"

Existing structural steel that will be in contact with new structural steel shall be cleaned and painted prior to erection as required by the Special Provision "Cleaning and Painting Contact Surface Areas of Existing Steel Structures".

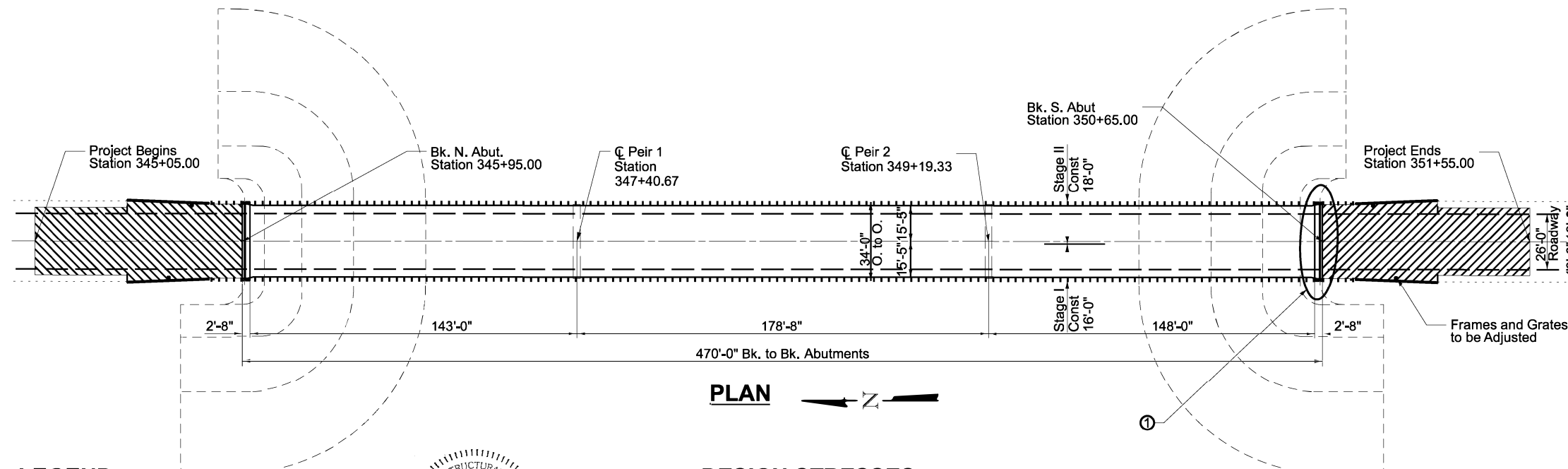


ELEVATION

TOTAL BILL OF MATERIAL

ITEM	UNIT	QUANTITY
HMA Surface Course, IL-9.5, Mix "D", N70	Ton	62
Hot Mix Asphalt Base Course Widening, 10"	Sq. Yd.	80
Bituminous Material (Tack Coat)	Pound	354
Deck Slab Repair (Partial Depth)	Sq. Yd.	8.6
Bar Splicers	Each	24
Concrete Superstructure	Cu. Yd.	9.6
Concrete Removal	Cu. Yd.	8.9
Reinforcement Bars, Epoxy Coated	Pound	1290
Preformed Joint Strip Seal	Foot	64
Structural Repair of Concrete (Depth < 5")	Sq Ft	140
Protective Coat	Sq. Yd.	14
Bridge Deck Scarification 3/4"	Sq Yd.	1583
Bridge Deck Microsilica Concrete Overlay 2 1/2"	Sq Yd.	1583
Bridge Deck Grooving	Sq Yd.	1480
Frames and Grates to be Adjusted	Each	4
Structural Steel Repair	Pound	123
Structural Steel Removal	L. Sum	1
Anchor Bolts, 1"	Each	20

* On New Concrete Only



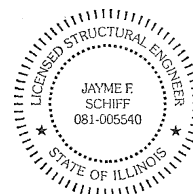
PLAN

LEGEND:



SCOPE OF WORK

- Approach Slab Repair (Partial)
- Concrete Structural Repair
- Preformed Joint Strip Seal
- Microsilica Deck Overlay



EXPIRES 11-30-2024

Jayme F. Schiff

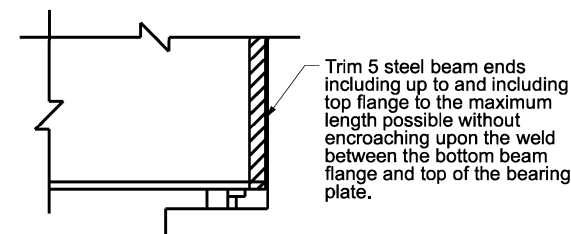
DESIGN STRESSES

(From Existing Plans)

Design Loading HS 20-44
Design Stresses
f_c=3,500 psi
f_y=60,000psi (Reinf.)
f_y=50,000 psi (Structure)

(New)

f_c=4,000 psi
f_y=60,000psi (Reinf.)
f_y=50,000 psi (M270 Grade 50)



① STRUCTURAL STEEL REMOVAL

**GENERAL PLAN & ELEVATION
IL 1 OVER SALINE RIVER
FAP 782 - D9 BRIDGE OVERLAY 2023-2
GALLATIN COUNTY
STRUCTURE NO. 030-0021**

MCDL - Plan Sheet 16 (Sheet 1)
 FILE NAME: P:\GIS\Projects\782-D9\Documents\DOT\Office\District_9\DRD_Projects\782-D9\CADD\Drawings\030-0021-SHH-Straining.dgn

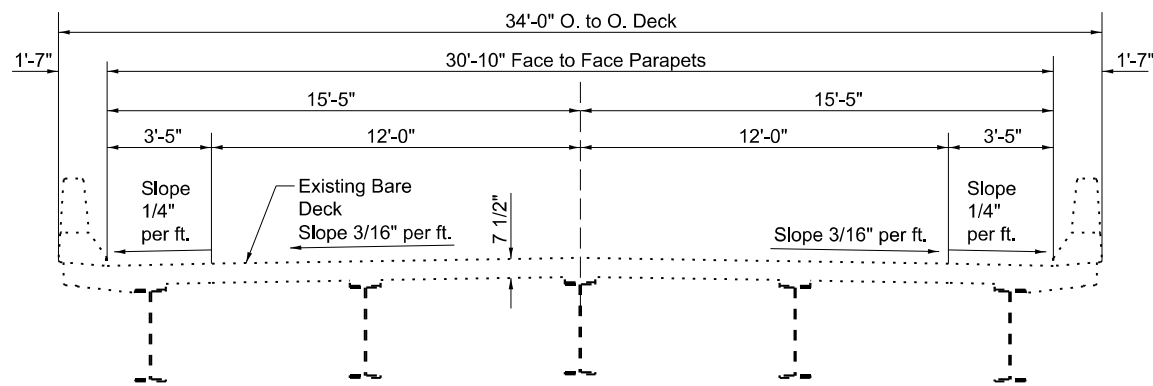
USER NAME = derek.snider	DESIGNED -	REVISED -
PLOT SCALE = \$SCALE\$	DRAWN -	REVISED -
PLOT DATE = 3/19/2024	CHECKED -	REVISED -
	DATE -	REVISED -

**STATE OF ILLINOIS
DEPARTMENT OF TRANSPORTATION**

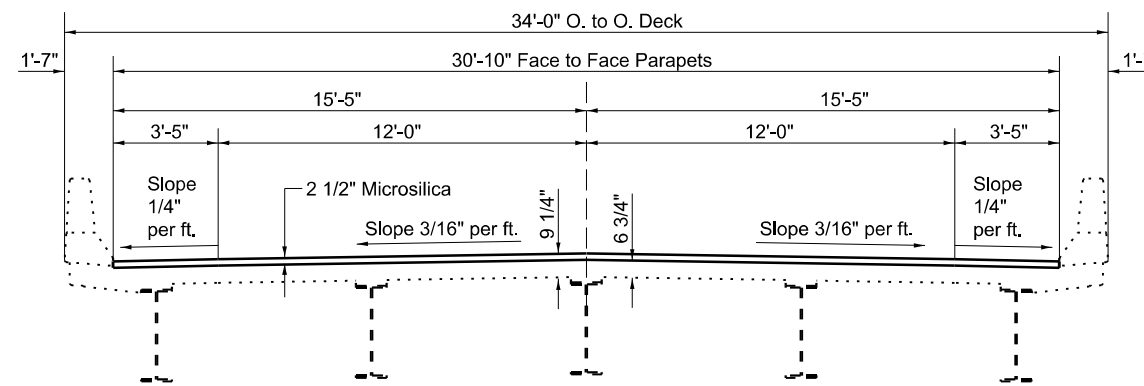
**GENERAL PLAN AND ELEVATION
SN 030-0021**

SCALE: SHEET OF SHEETS STA. TO STA.

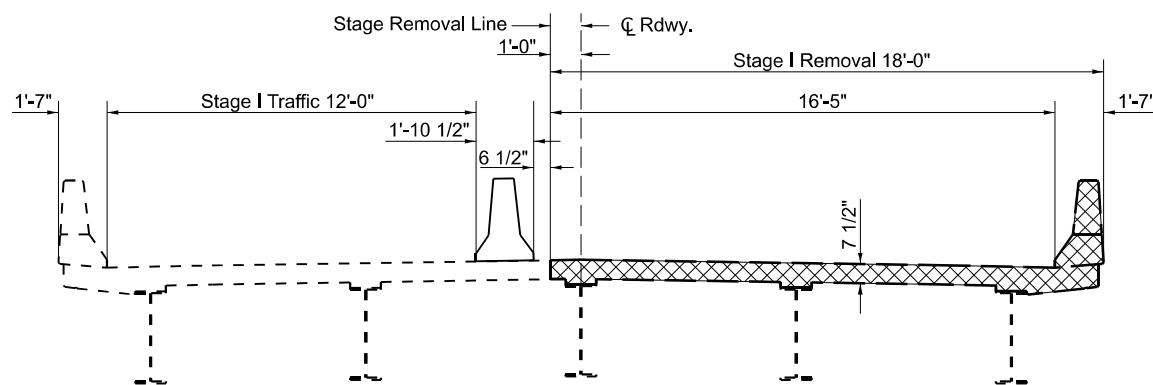
F.A.P. RTE.	SECTION	COUNTY	TOTAL SHEETS	SHEET NO.
782	D9 BRIDGE OVERLAY 2023-2	GALLATIN	21	16
CONTRACT NO. 78920			ILLINOIS FED. AID PROJECT	



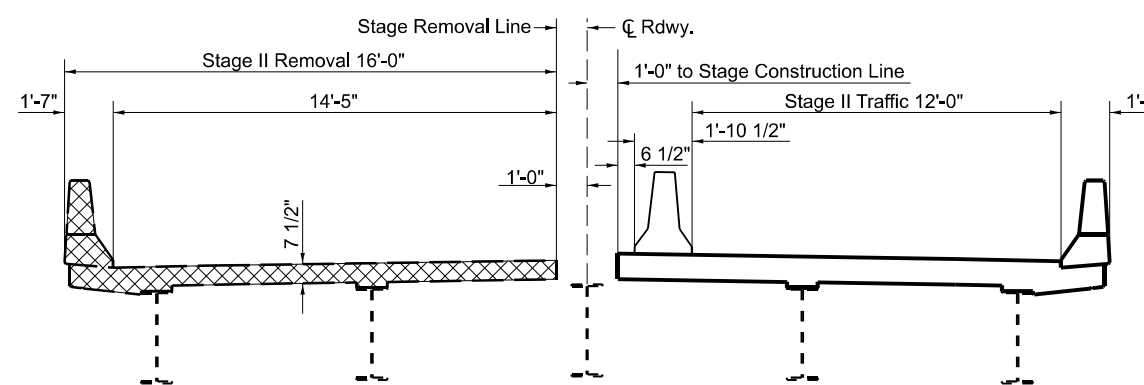
TYPICAL BRIDGE SECTION - EXISTING



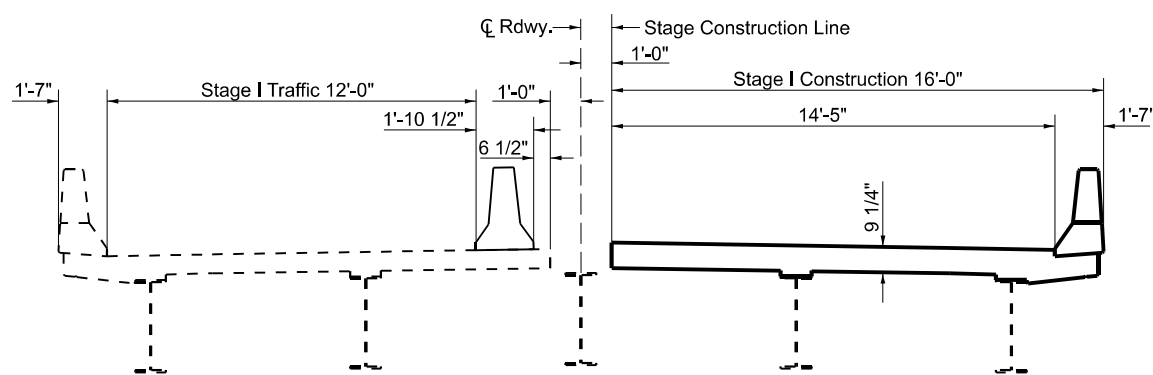
TYPICAL BRIDGE SECTION - PROPOSED



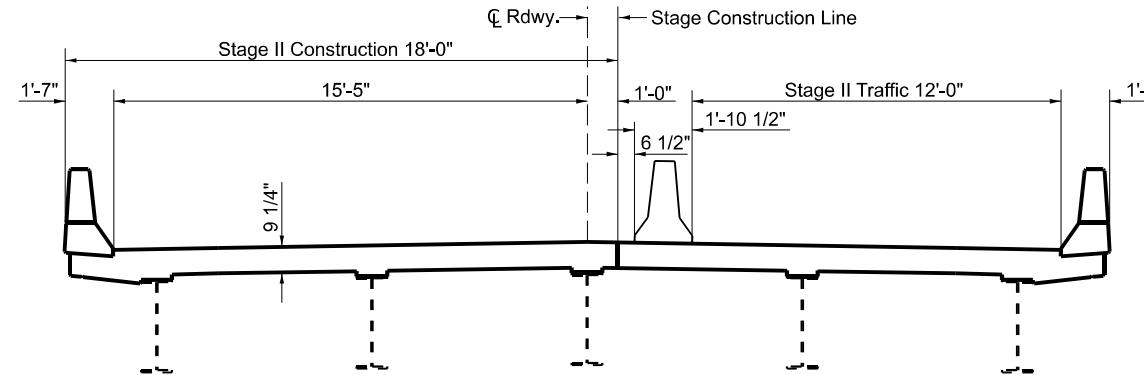
STAGE I REMOVAL
(AT JOINT LOCATIONS ONLY)



STAGE II REMOVAL
(AT JOINT LOCATIONS ONLY)



STAGE I CONSTRUCTION
(AT JOINT LOCATIONS ONLY)



STAGE II CONSTRUCTION
(AT JOINT LOCATIONS ONLY)

Concrete Removal

Notes: All Sections Looking South

MODEL: P:\in Sheet 17 (Sheet)
 FILE NAME: P:\in Sheet 17 (Sheet)\DOT\Office\District 9\BDD\Projects\78920\CAD\data\CADsheets\0978920-SNH-Stamping.dgn

USER NAME = derek.snider	DESIGNED -	REVISED -
	DRAWN -	REVISED -
PLOT SCALE = \$SCALE\$	CHECKED -	REVISED -
PLOT DATE = 2/22/2024	DATE -	REVISED -

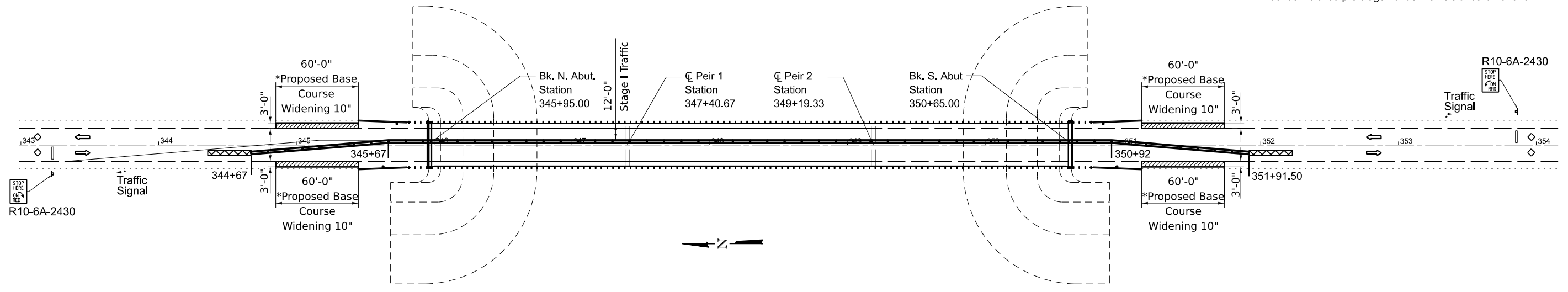
STATE OF ILLINOIS
DEPARTMENT OF TRANSPORTATION

TYPICAL SECTIONS
SN 030-0021

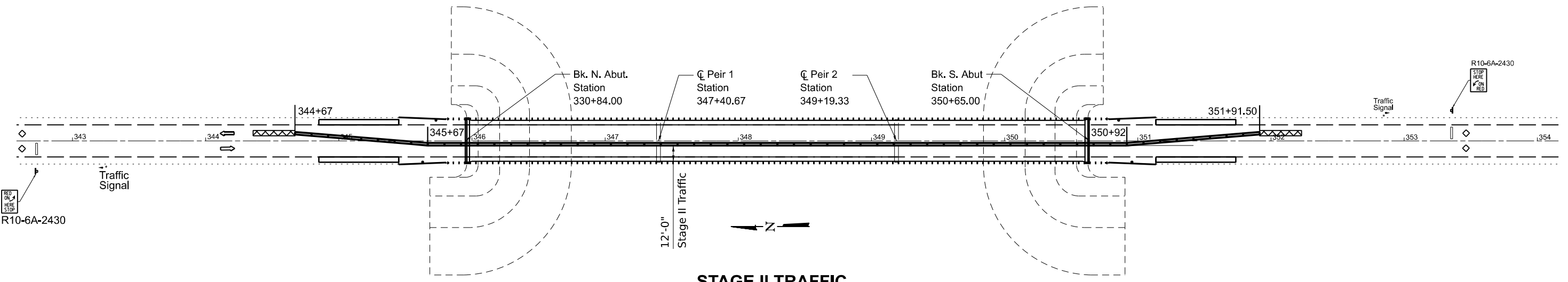
SCALE: SHEET OF SHEETS STA. TO STA.

F.A.P. RTE.	SECTION	COUNTY	TOTAL SHEETS	SHEET NO.
782	D9 BRIDGE OVERLAY 2023-2	GALLATIN	21	17
			CONTRACT NO. 78920	
ILLINOIS FED. AID PROJECT				

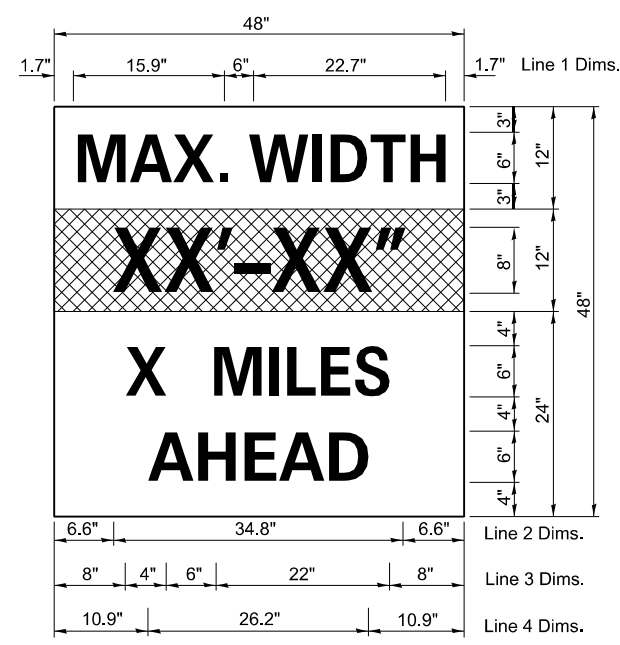
* Must be installed pre stage I under traffic standard 701326.



STAGE I TRAFFIC



STAGE II TRAFFIC



W12-I103

W12-I103, No Border
 "MAX WIDTH" 6D, No Border, Black on White
 "XX'-XX'" 8D, No Border, Black on Orange
 "X MILES" 6D, No Border, Black on White
 "AHEAD" 6D, No Border, Black on White

Notes for Max Width Sign:

1. Install a Max Width Sign each direction on IL 1 to give traffic approaching work zone enough advance notice to change routes if needed. Exact locations as directed by engineer.
2. The contractor shall furnish the posts and erect the signs at the locations directed by the engineer. All signs shall be post mounted.
3. The noted work, including signs, posts, hardware and labor shall be included in the contract unit price, each, for Traffic Control and Protection, Std. 701321, no other compensation will be allowed.
4. The width shown on the W12-I103 sign shall be 18" less than what is shown in the staged lane widths or as directed by the Engineer.
5. The "X" MILES AHEAD will be determined by the engineer.

LEGEND:

Impact Attenuator

MODEL: P1m Sheet 18 (Sheet)
 FILE NAME: P:\GIS\Projects\DOT\Office\District 9\BDD\Projects\78920\CD\Drawings\DOT\Drawings\78920-SNH-Stamping.dgn

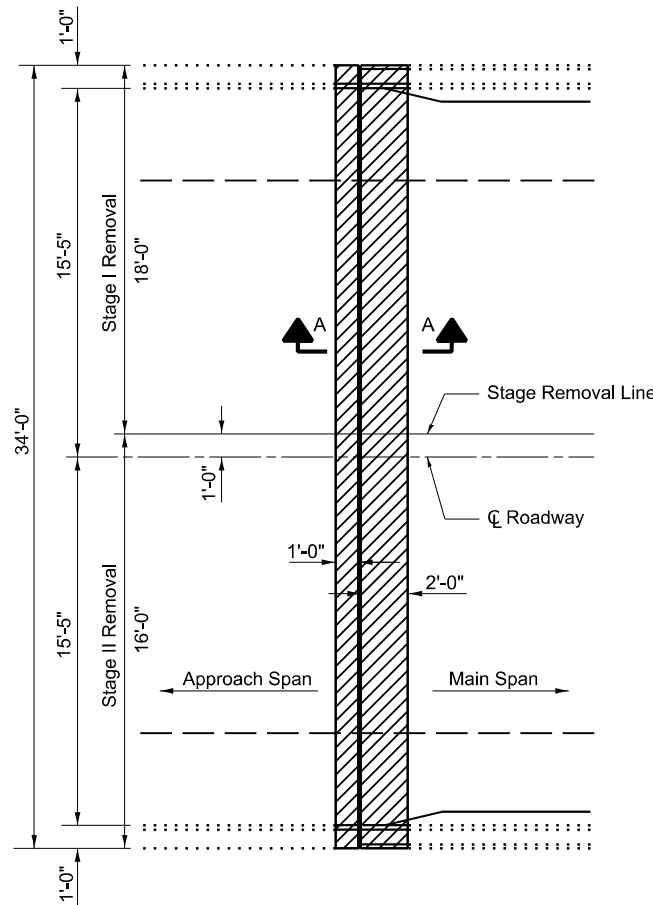
USER NAME = derek.snider	DESIGNED -	REVISED -
PLOT SCALE = \$SCALE\$	DRAWN -	REVISED -
PLOT DATE = 2/22/2024	CHECKED -	REVISED -
	DATE -	REVISED -

**STATE OF ILLINOIS
 DEPARTMENT OF TRANSPORTATION**

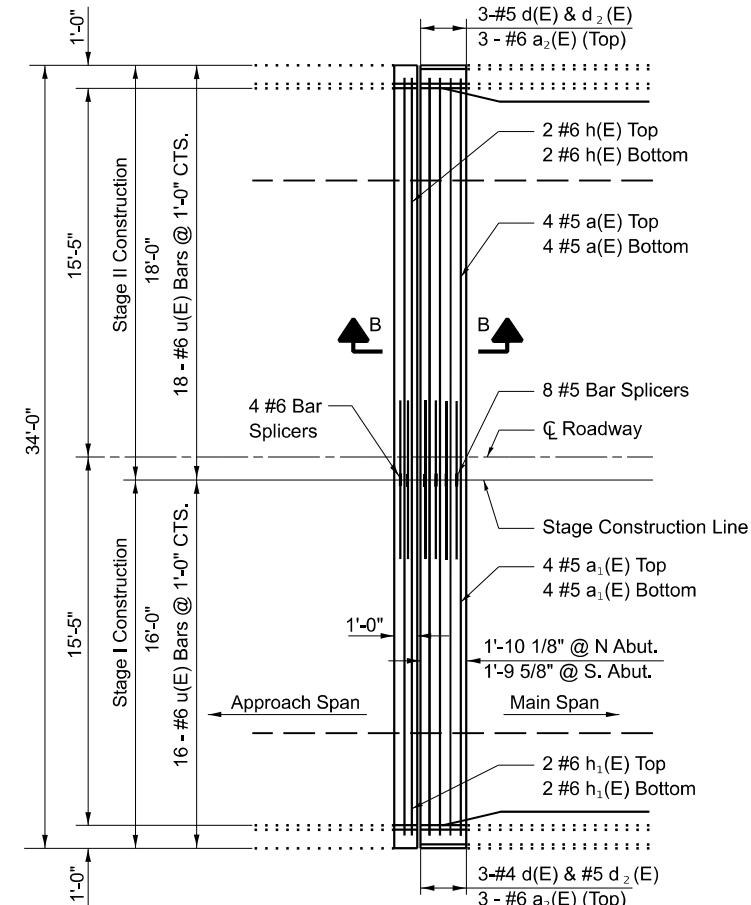
**STAGING PLAN
 SN 030-0021**

SCALE: SHEET OF SHEETS STA. TO STA.

F.A.P. RTE.	SECTION	COUNTY	TOTAL SHEETS	SHEET NO.
782	D9 BRIDGE OVERLAY 2023-2	GALLATIN	21	18
CONTRACT NO. 78920				
ILLINOIS FED. AID PROJECT				

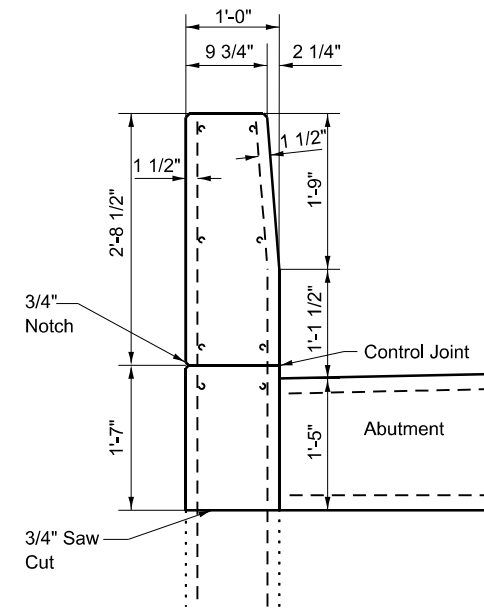
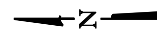


**JOINT AT NORTH ABUTMENT
SHOWING CONCRETE REMOVAL
(SOUTH ABUTMENT SIMILAR)**

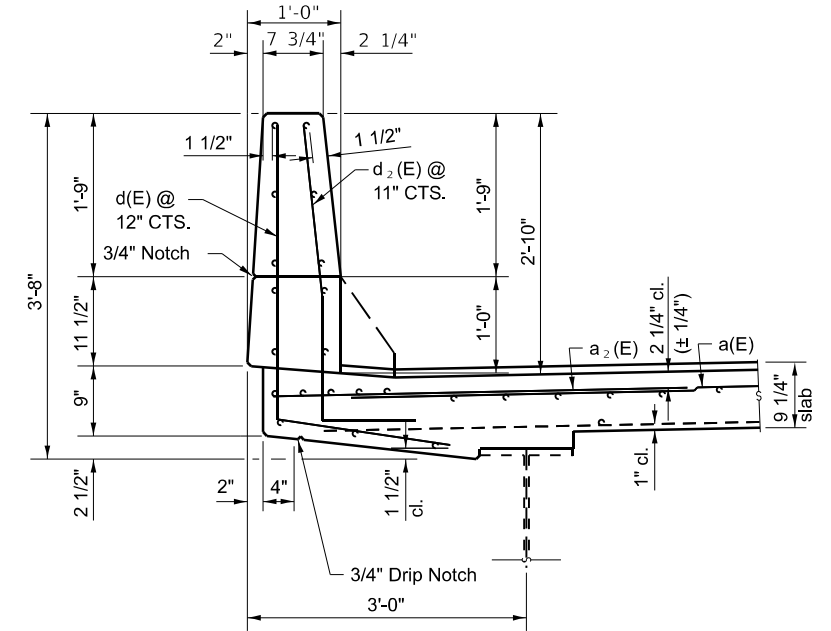


**JOINT AT NORTH ABUTMENT
SHOWING NEW CONCRETE
(SOUTH ABUTMENT SIMILAR)**

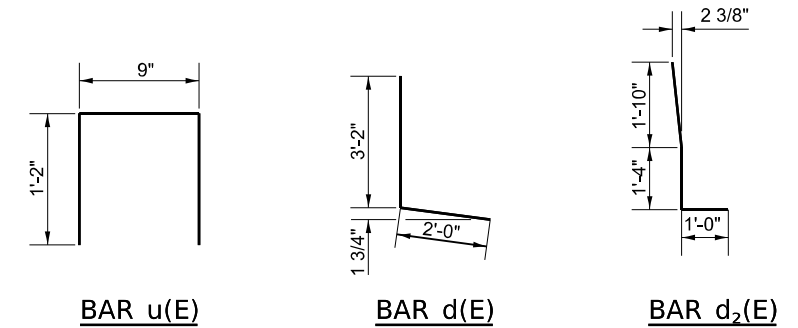
Concrete Removal



SECTION THROUGH WINGWALL

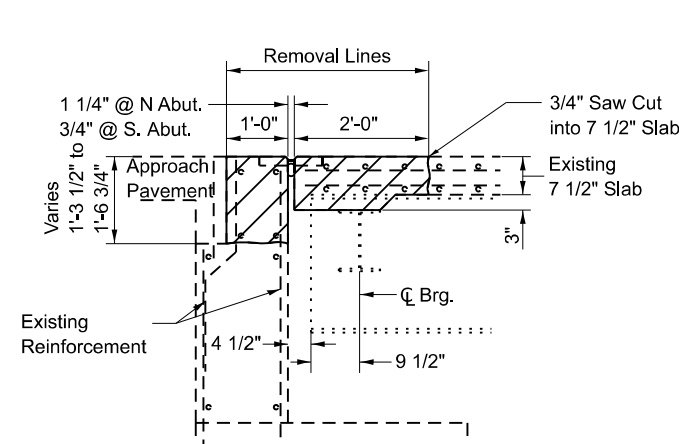


SECTION THROUGH PARAPET

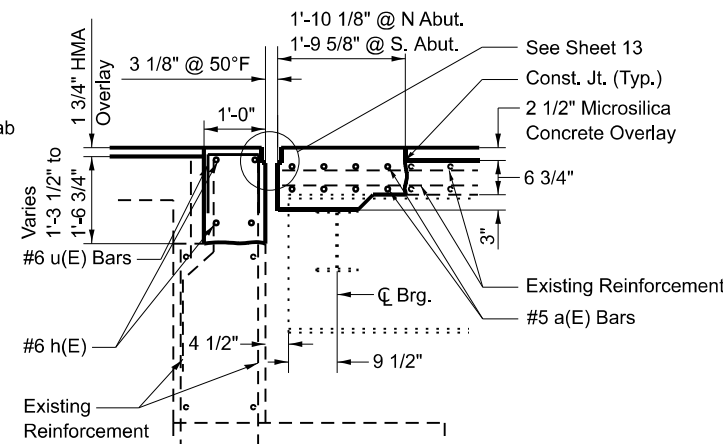


BILL OF MATERIAL (BOTH ABUTMENT)

Bar	No.	Size	Length	Shape
a(E)	16	#5	16'-10"	—
a ₁ (E)	16	#5	14'-10"	—
a ₂ (E)	12	#6	4'-0"	—
d(E)	12	#4	5'-4"	L
d ₂ (E)	12	#5	5'-4"	L
h(E)	8	#6	16'-10"	—
h ₁ (E)	8	#6	14'-10"	—
u(E)	68	#6	1'-11"	U
Bar Splicer			Each	24
Concrete Superstructure			Cu. Yd.	9.6
Concrete Removal			Cu. Yd.	8.9
Reinforcement Bars, Epoxy Coated			Pound	1290



SECTION A-A
(Dimensions are at Right Angles)



SECTION B-B
(Dimensions are at Right Angles)

**JOINT RECONSTRUCTION DETAILS
IL 1 OVER SALINE RIVER
FAP 782 - D9 BRIDGE OVERLAY 2023-2
GALLATIN COUNTY
STRUCTURE NO. 030-0021**

MODEL: P:\in Sheet 19 (Sheet)
FILE NAME: P:\projects\2023\DOT\Office\District 9\BDD\Projects\78220\CD\Drawings\CD\Sheets\030-0021-Struct.dwg

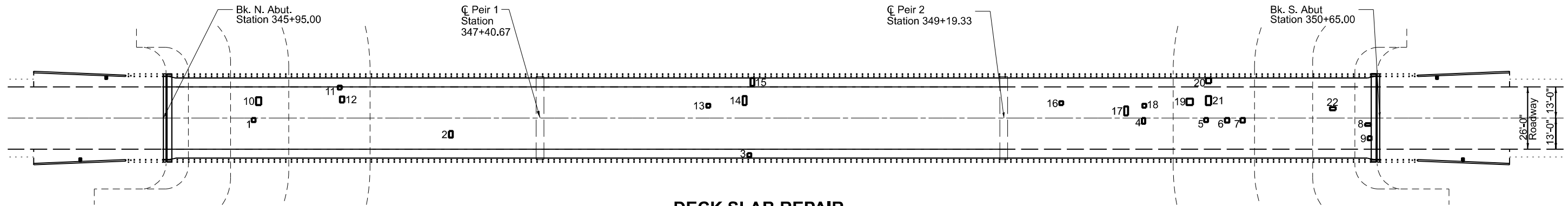
USER NAME = derek.snider	DESIGNED -	REVISED -
PLOT SCALE = \$SCALE\$	DRAWN -	REVISED -
PLOT DATE = 3/19/2024	CHECKED -	REVISED -
	DATE -	REVISED -

**STATE OF ILLINOIS
DEPARTMENT OF TRANSPORTATION**

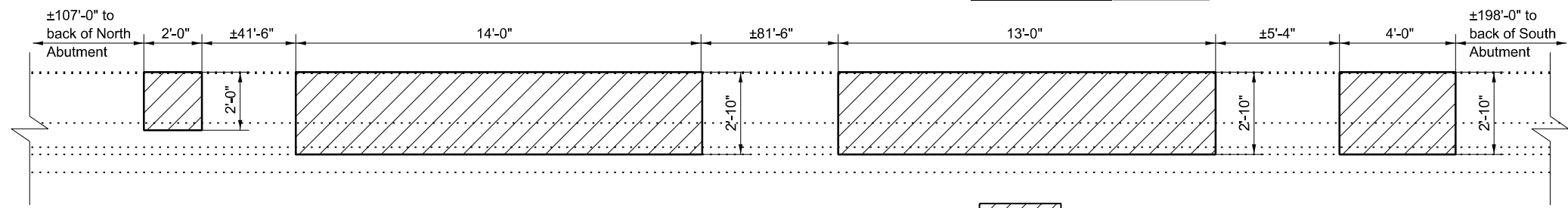
**DECK SLAB, PARAPET, & SUBSTRUCTURE REPAIR
SN 030-0021**

SCALE: SHEET OF SHEETS STA. TO STA.

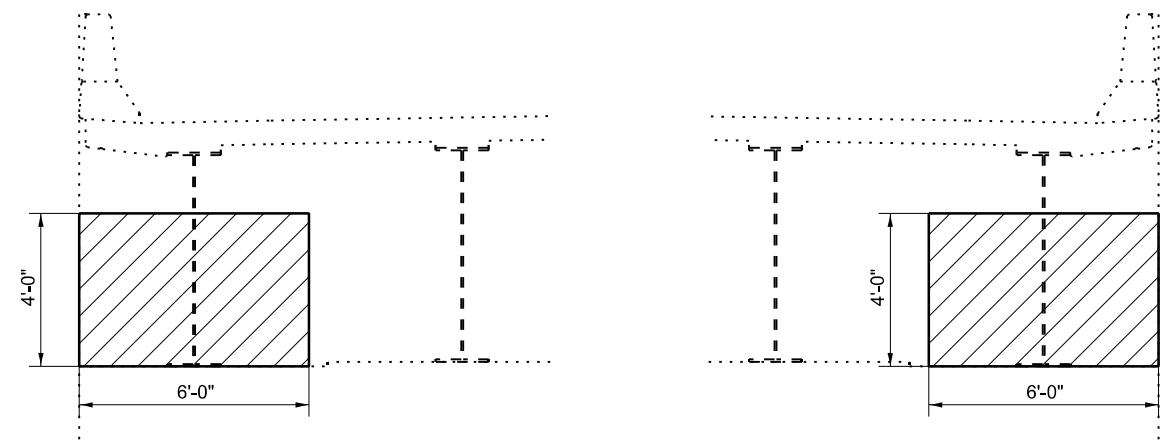
F.A.P. RTE.	SECTION	COUNTY	TOTAL SHEETS	SHEET NO.
782	D9 BRIDGE OVERLAY 2023-2	GALLATIN	21	19
ILLINOIS			FED. AID PROJECT	



DECK SLAB REPAIR

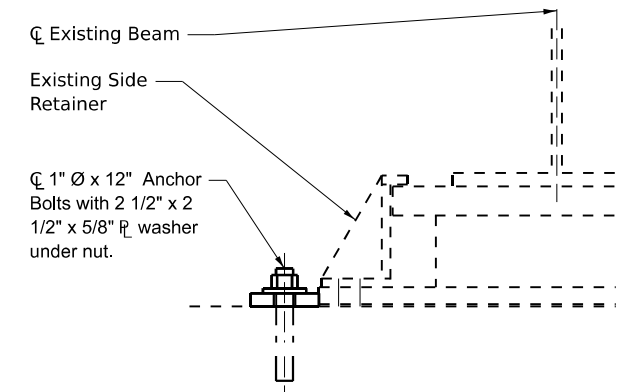


EAST PARAPET WALL REPAIR Structural Repair of Concrete ≤ 5"

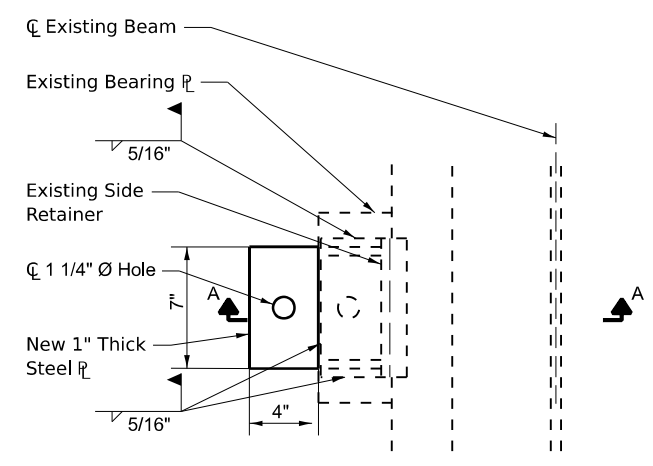


SOUTH ABUTMENT BACK WALL REPAIR
(Looking South)

SOUTH ABUTMENT BACK WALL REPAIR
(Looking North)



Bearing Section A-A



Bearing Plan
20 New Anchor Plates

South Bound			
Number	Length (ft)	Width (ft)	Area (Sq. Yd.)
1	1.5	1.5	0.250
2	1.5	2.5	0.417
3	1.5	1.5	0.250
4	1.3	2.2	0.318
5	1.5	1.5	0.250
6	1.7	1.7	0.321
7	1.7	1.7	0.321
8	2.2	1.0	0.244
9	1.5	1.5	0.250
South Bound Total			2.621

North Bound			
Number	Length (ft)	Width (ft)	Area (Sq. Yd.)
10	2.2	1.2	0.293
11	2.0	3.5	0.778
12	2.0	2.0	0.444
13	2.5	2.5	0.694
14	1.5	1.5	0.250
15	1.5	3.5	0.583
16	1.5	1.5	0.250
17	1.5	3.0	0.500
18	1.5	3.5	0.583
19	1.5	1.5	0.250
20	1.7	2.3	0.434
21	1.5	1.5	0.250
22	2.0	3.0	0.667
North Bound Total			5.978

Notes: The Engineer will determine final patch locations and quantities in the field before bridge deck and parapet wall patching operations begin.

BILL OF MATERIAL

ITEM	UNIT	TOTAL
Deck Slab Repair (Partial Depth)	SQ. YD.	8.6
Bridge Deck Concrete Crack Sealer	Foot	1300
Structural Repair of Concrete (Depth ≤ 5 Inches)	Sq. Ft.	140
Structural Steel Repair	Pound	123

MODEL: P1m Sheet 20 (Sheet)
FILE NAME: P:\GIS\Projects\DOT\Office\District 9\BDD Projects\78920\CAD\Drawings\DOT\78920-SNH-Stamping.dgn

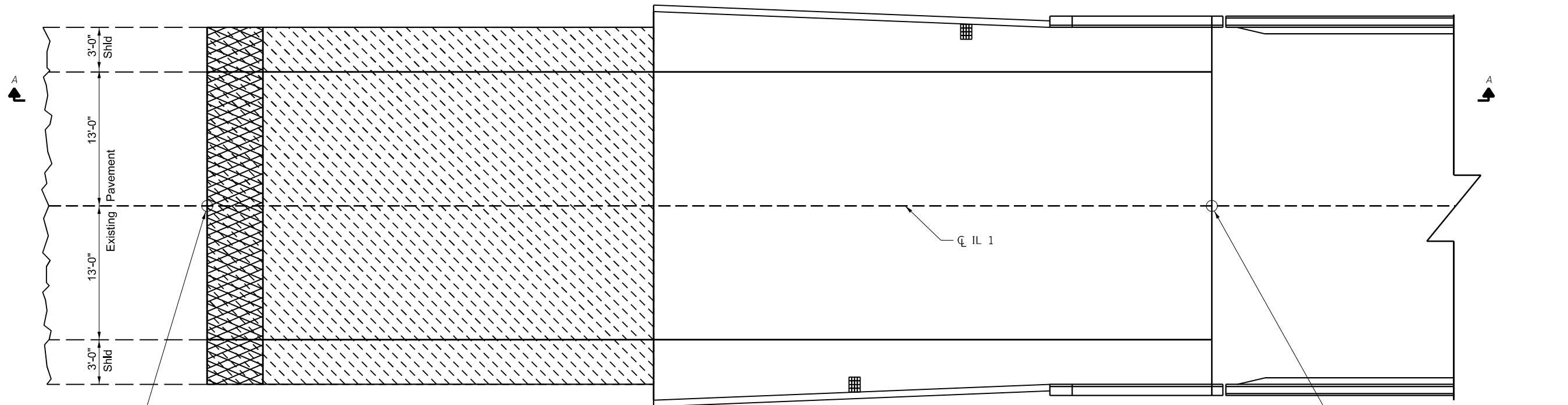
USER NAME = derek.snider	DESIGNED -	REVISED -
PLOT SCALE = \$SCALE\$	DRAWN -	REVISED -
PLOT DATE = 2/22/2024	CHECKED -	REVISED -
	DATE -	REVISED -

STATE OF ILLINOIS
DEPARTMENT OF TRANSPORTATION

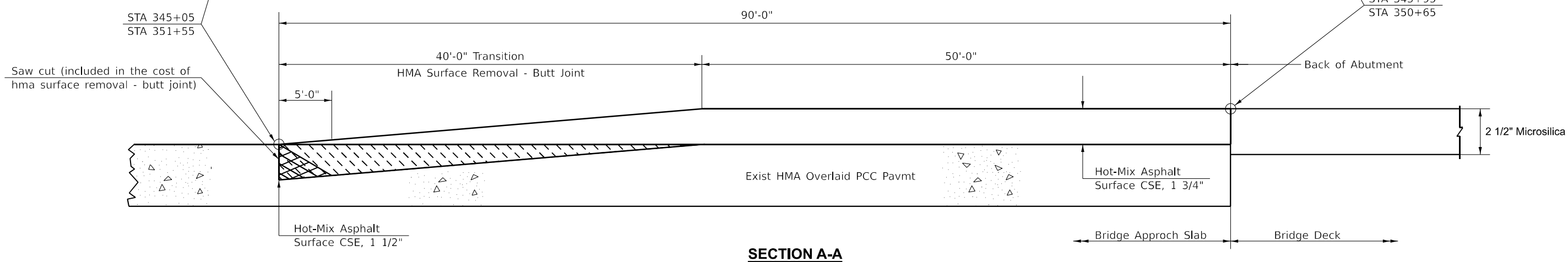
BUTT JOINT DETAIL
SN 030-0021

SCALE: SHEET OF SHEETS STA. TO STA.



F.A.P. RTE.	SECTION	COUNTY	TOTAL SHEETS	SHEET NO.
782	D9 BRIDGE OVERLAY 2023-2	GALLATIN	21	20
CONTRACT NO. 78920			ILLINOIS FED. AID PROJECT	



BUTT JOINT



SECTION A-A

-  Temporary Ramp
-  HMA Surface Removal Butt Joint

R-27 10-12-2021

USER NAME = derek.snider	DESIGNED -	REVISED -
PLOT SCALE = \$SCALE\$	DRAWN -	REVISED -
PLOT DATE = 2/22/2024	CHECKED -	REVISED -
	DATE -	REVISED -

**STATE OF ILLINOIS
DEPARTMENT OF TRANSPORTATION**

**PREFORMED JOINT STRIP SEALS
SN 030-0020 & SN 030-0021**

SCALE: SHEET OF SHEETS STA. TO STA.

F.A.P. RTE.	SECTION	COUNTY	TOTAL SHEETS	SHEET NO.
782	D9 BRIDGE OVERLAY 2023-2	GALLATIN	21	21
CONTRACT NO. 78920				
ILLINOIS FED. AID PROJECT				

MODEL: Rtn Sheet 21 (Sheet)
 FILE NAME: P:\GIS\Projects\DOT\Office\District 9\BDD Projects\78920\CAD\data\CADsheets\0978920-SNH-Stamping.dgn