

04-26-2024 LETTING ITEM 169

INDEX OF SHEETS

- 1 COVER
- 2 SUMMARY OF QUANTITIES
- 3 GENERAL NOTES
- 4-10 TYPICAL SECTIONS
- 11-13 SCHEDULE OF QUANTITIES
- 14-21 EROSION CONTROL PLAN
- 22 US RTE 52 INTERSECTION DETAIL
- 23-24 DETAILS

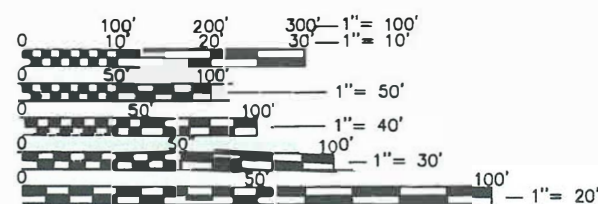
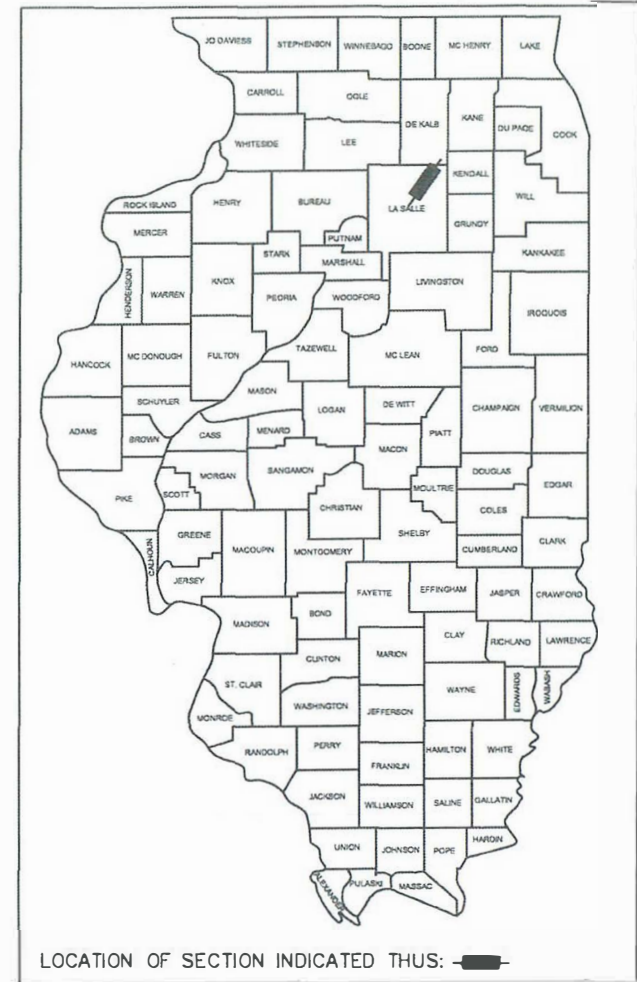
**FUNCTIONAL CLASS: MAJOR COLLECTOR (RURAL)**  
**2023 ADT: 2,000**  
**DESIGN SPEED: 50 MPH**  
**3R GUIDELINES**

STA 0+00 = NORTH EOP US ROUTE 52  
 STA 230+15 = 105' NORTH OF NORTH EOP CH 22 (N 42ND RD)  
 STA 533+45 = 25' NORTH OF VILLAGE OF SOMONAUK JURISDICTION  
 (CENTERLINE 12'x5' PRECAST BOX CULVERT  
 OVER TRIBUTARY OF LAKE HOLIDAY)

STATE OF ILLINOIS  
 DEPARTMENT OF TRANSPORTATION  
**PROPOSED  
 HIGHWAY SAFETY  
 IMPROVEMENT PROGRAM**

HMA RESURFACING  
 F.A.S. ROUTE 258 (COUNTY HIGHWAY 2)  
 SECTION 21-00392-01-RS  
 PROJECT NO. JNBS(680)  
 LASALLE COUNTY

C-93-079-24

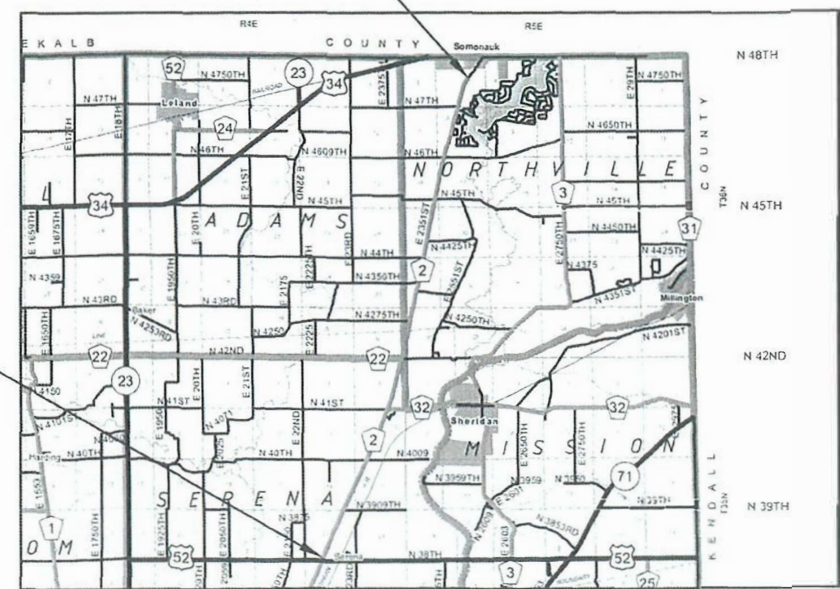


FULL SIZE PLANS HAVE BEEN PREPARED USING STANDARD ENGINEERING SCALES. REDUCED SIZED PLANS WILL NOT CONFORM TO STANDARD SCALES. IN MAKING MEASUREMENTS ON REDUCED PLANS, THE ABOVE SCALES MAY BE USED.

**CALL JULIE**  
 48 Hours Before You Dig.  
 811 OR 1-800-892-0123

PROJECT START  
 STA 0+00

PROJECT END  
 STA 533+45



STATE OF ILLINOIS  
 DEPARTMENT OF TRANSPORTATION

APPROVED 2-21-2024  
*David R. [Signature]*  
 LASALLE COUNTY ENGINEER

PASSED FEBRUARY 21, 2024  
*[Signature]*  
 DISTRICT 3 ENGINEER OF  
 LOCAL ROADS & STREETS

RELEASED FOR BID  
 BASED ON LIMITED  
 REVIEW  
February 21, 2024  
*Stephen [Signature]*  
 REGION 2 ENGINEER

**PRINTED BY THE AUTHORITY  
 OF THE STATE OF ILLINOIS**

CONTRACT NO. 87847

GROSS LENGTH = 53,345 FT = 10.103 MI  
 NET LENGTH = 53,345 FT = 10.103 MI

SUMMARY OF QUANTITY					
CODE NO.	PAY ITEM	UNIT	CONST.	CONST.	TOTAL
			TYPE 0005	TYPE 0021	
			RESURF	SAFETY	
20200500	EARTH EXCAVATION (WIDENING)	CU YD	0	5,060	5,060
* 25000210	SEEDING, CLASS 2A	ACRE	0	23.50	23.50
* 25000400	NITROGEN FERTILIZER NUTRIENT	POUND	0	2,119	2,119
* 25000500	PHOSPHOROUS FERTILIZER NUTRIENT	POUND	0	2,119	2,119
* 25000600	POTASSIUM FERTILIZER NUTRIENT	POUND	0	2,119	2,119
* 25100630	EROSION CONTROL BLANKET	SQ YD	0	113,938	113,938
28000250	TEMPORARY EROSION CONTROL SEEDING	POUND	0	2,354	2,354
28000305	TEMPORARY DITCH CHECKS	FOOT	0	400	400
28000500	INLET AND PIPE PROTECTION	EACH	0	11	11
40600275	BITUMINOUS MATERIALS (PRIME COAT)	POUND	162	0	162
40600290	BITUMINOUS MATERIALS (TACK COAT)	POUND	40,198	7,025	47,223
40600370	LONGITUDINAL JOINT SEALANT	FOOT	23,015	0	23,015
40600982	HOT-MIX ASPHALT SURFACE REMOVAL - BUTT JOINT	SQ YD	674	0	674
40602965	HOT-MIX ASPHALT BINDER COURSE, IL-9.5FG, N50	TON	4,093	669	4,762
40604000	HOT-MIX ASPHALT SURFACE COURSE, IL-9.5FG, MIX "C", N50	TON	4,282	669	4,951
44000152	HOT-MIX ASPHALT SURFACE REMOVAL, ¾"	SQ YD	100	0	100
44000154	HOT-MIX ASPHALT SURFACE REMOVAL, 1 ¼"	SQ YD	1,242	0	1,242
48101200	AGGREGATE SHOULDERS, TYPE B	TON	0	4,290	4,290
48203019	HOT-MIX ASPHALT SHOULDERS, 5 ½"	SQ YD	0	9,554	9,554
48203029	HOT-MIX ASPHALT SHOULDERS, 8"	SQ YD	0	13,234	13,234
64200108	SHOULDER RUMBLE STRIPS, 8 INCH	FOOT	0	101,438	101,438
67100100	MOBILIZATION	L SUM	0.35	0.65	1
70300100	SHORT TERM PAVEMENT MARKING	FOOT	17,784	0	17,784
* 78001110	PAINT PAVEMENT MARKING - LINE 4"	FOOT	12,215	0	12,215
* 78001130	PAINT PAVEMENT MARKING - LINE 6"	FOOT	0	103,583	103,583
* 78001140	PAINT PAVEMENT MARKING - LINE 8"	FOOT	305	0	305
* 78001150	PAINT PAVEMENT MARKING - LINE 12"	FOOT	129	0	129
* 78004280	PREFORMED PLASTIC PAVEMENT MARKING, TYPE B - INLAID - LINE 24"	FOOT	28	0	28
Z0055500	RUMBLE STRIPS	SQ FT	900	0	900
X2020118	GRADING AND SHAPING FORESLOPES	UNIT	0	1,025	1,025
X7010216	TRAFFIC CONTROL AND PROTECTION, (SPECIAL)	L SUM	0.35	0.65	1

\* SPECIALTY ITEM

SECTION

21-00392-01-RS

SUMMARY OF QUANTITIES

LASALLE COUNTY  
HIGHWAY DEPARTMENT  
1400 N. 27TH ROAD - P.O. BOX 128 - OTTAWA, ILLINOIS 61350  
PHONE (815) 434-0743 FAX (815) 434-0747



HWY. NO.  
CH 2

CONTRACT  
NO.  
87847

SHEET NO.  
2 of 24

## GENERAL NOTES

THE THICKNESS OF HMA MIXTURES SHOWN ON THE PLANS IS THE NOMINAL THICKNESS. DEVIATIONS FROM THE NOMINAL THICKNESS WILL BE PERMITTED WHEN SUCH DEVIATIONS OCCUR DUE TO IRREGULARITIES IN THE EXISTING SURFACE OR BASE ON WHICH THE HMA MIXTURE IS PLACED.

THE HMA SURFACE OF ALL MAILBOX TURNOUTS, PRIVATE ENTRANCES, COMMERCIAL ENTRANCES AND SIDE ROADS SHALL BE MADE NEATLY, IN A WORKMANLIKE MANNER, AND SHALL ACCURATELY CONFORM TO THE SHAPES AND DIMENSIONS SHOWN ON THE PLAN DETAILS. IF REQUIRED BY THE ENGINEER, THE CONTRACTOR SHALL SAW CUT THE HMA SURFACE TO CONFORM TO THE SHAPES AND DIMENSIONS SHOWN ON THE PLAN DETAILS. THIS WORK WILL BE INCLUDED IN THE COST OF THE HMA SURFACE.

THE ENGINEER WILL BE THE SOLE JUDGE CONCERNING CURING TIME FOR THE VARIOUS HMA LIFTS.

ON EXISTING PAVEMENT WHICH MAY BE SUPERELEVATED, THE NEW HMA PAVEMENT SHALL BE BUILT WITH THE SAME SUPERELEVATION UNLESS NEW SUPERELEVATION RATES ARE GIVEN ON THE PLANS.

THE FOLLOWING RATES OF APPLICATION HAVE BEEN USED IN CALCULATING PLAN QUANTITIES:

PRIME COAT	0.25 LB / SQ FT
*TACK COAT	0.05 LB / SQ FT (ON EX CAPE)
	0.025 LB / SQ FT (ON PR BINDER)
HOT-MIX ASPHALT	112 LB / SQ FT / IN
GRANULAR MATERIALS	2.05 TON / CU YD
SHORT TERM PAVEMENT MARKING	10 FT / 40 FT

\*THE FIRST APPLICATION OF BITUMINOUS MATERIALS (TACK COAT) SHALL BE A NON-TRACKING EMULSIFIED ASPHALT

## HIGHWAY STANDARDS

280001-07	TEMPORARY EROSION CONTROL SYSTEMS
642006-01	SHOULDER RUMBLE STRIPS, 8 IN
701006-05	OFF-RD OPERATIONS, 2L, 2W, 15' TO 24" FROM PAVEMENT EDGE
701011-04	OFF-RD MOVING OPERATIONS, 2L, 2W, DAY ONLY
701201-05	LANE CLOSURE, 2L, 2W, DAY ONLY, FOR SPEEDS ≥ 45 MPH
701301-04	LANE CLOSURE, 2L, 2W, SHORT TIME OPERATIONS
701306-04	LANE CLOSURE, 2L, 2W, SLOW MOVING OPERATIONS DAY ONLY, FOR SPEEDS ≥ 45 MPH
701311-03	LANE CLOSURE, 2L, 2W, MOVING OPERATIONS - DAY ONLY
701326-04	LANE CLOSURE, 2L 2W, PAVEMENT WIDENING FOR SPEEDS ≥ 45 MPH
701901-09	TRAFFIC CONTROL DEVICES

## HMA MIXTURE REQUIREMENTS

LOCATION(S):	ENTIRE PROJECT	ENTIRE PROJECT	ENTIRE PROJECT	ENTIRE PROJECT
MIXTURE USE(S):	BINDER	SURFACE	HMA SHLDR - BOTT LIFT	HMA SHLDR - TOP LIFT
PG:	PG64-22	PG64-22	PG64-22	PG64-22
DESIGN AIR VOIDS:	4% @ N50	4% @ N50	4.0% @ N50	4.0% @ N50
MIXTURE COMPOSITION:	IL-9.5FG	IL-9.5FG	IL-19.0	IL-9.5FG
FRICTION AGGREGATE:		MIX "C"		MIX "C"
MIXTURE WEIGHT:	112 LB/SQ YD/IN	112 LB/SQ YD/IN	112 LB/SQ YD/IN	112 LB/SQ YD/IN
QUALITY MANAGEMENT PROGRAM:	QC/QA	QC/QA	QC/QA	QC/QA
SUBLOT SIZE:	N/A	N/A	N/A	N/A
MATERIAL TRANSFER DEVICE:	NO	NO	NO	NO
DENSITY TEST METHOD:	NUCLEAR	NUCLEAR	NUCLEAR	NUCLEAR

SECTION

21-00392-01-RS

GENERAL NOTES

**LASALLE COUNTY**  
**HIGHWAY DEPARTMENT**  
 1400 N. 27TH ROAD - P.O. BOX 128 - OTTAWA, ILLINOIS 61350  
 PHONE (815) 434-0743 FAX (815) 434-0747



HWY. NO.

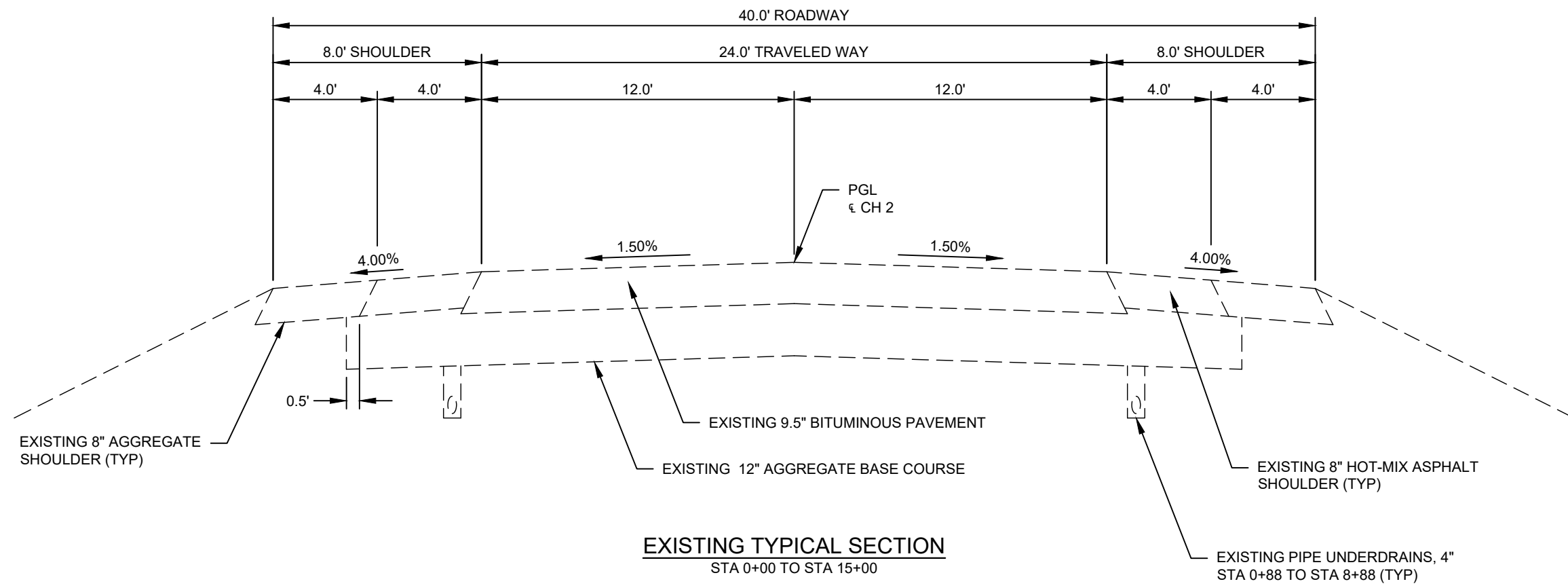
CH 2

CONTRACT NO.

87847

SHEET NO.

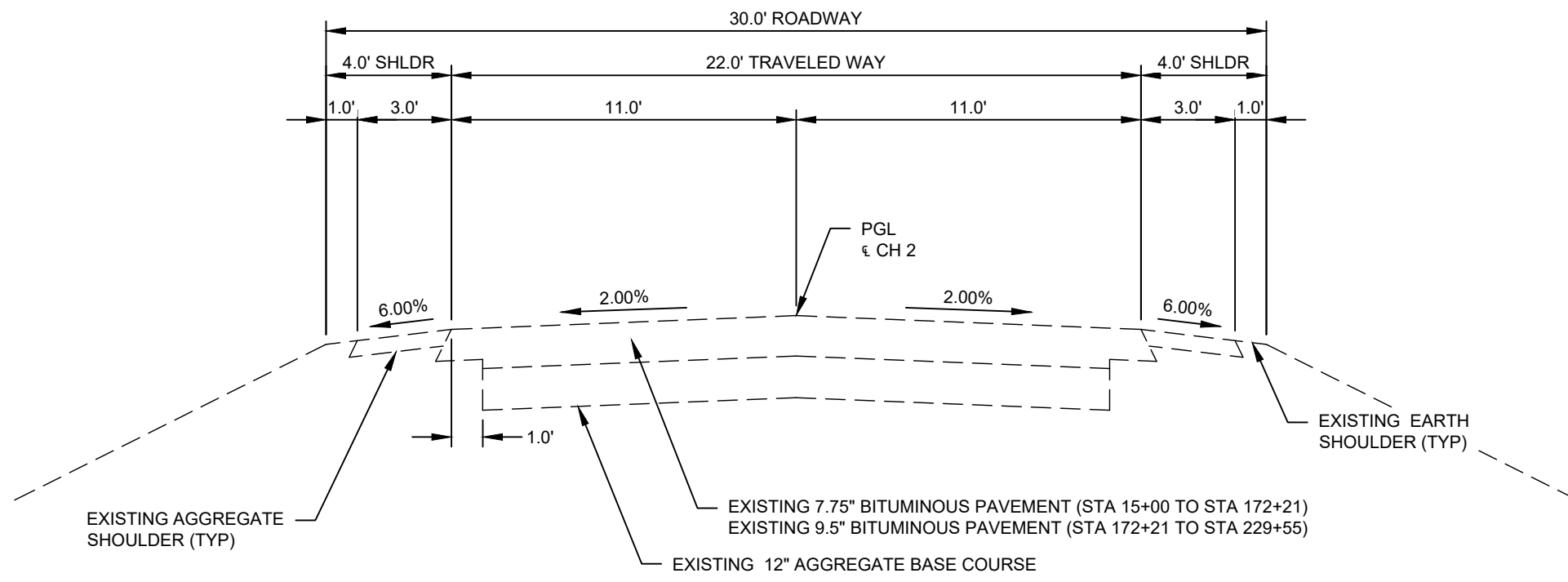
3 of 24



**EXISTING TYPICAL SECTION**

STA 0+00 TO STA 15+00

SUPERELEVATION TYPICALS NOT SHOWN,  
EXISTING PAVEMENT STRUCTURE DOES NOT CHANGE



**EXISTING TYPICAL SECTION**

STA 15+00 TO STA 229+55

SUPERELEVATION TYPICALS NOT SHOWN,  
EXISTING PAVEMENT STRUCTURE DOES NOT CHANGE

SECTION

21-00392-01-RS

EXISTING  
TYPICAL SECTIONS

LASALLE COUNTY  
HIGHWAY DEPARTMENT  
1400 N. 27TH ROAD - P.O. BOX 128 - OTTAWA, ILLINOIS 61350  
PHONE (815) 434-0743 FAX (815) 434-0747



HWY. NO.

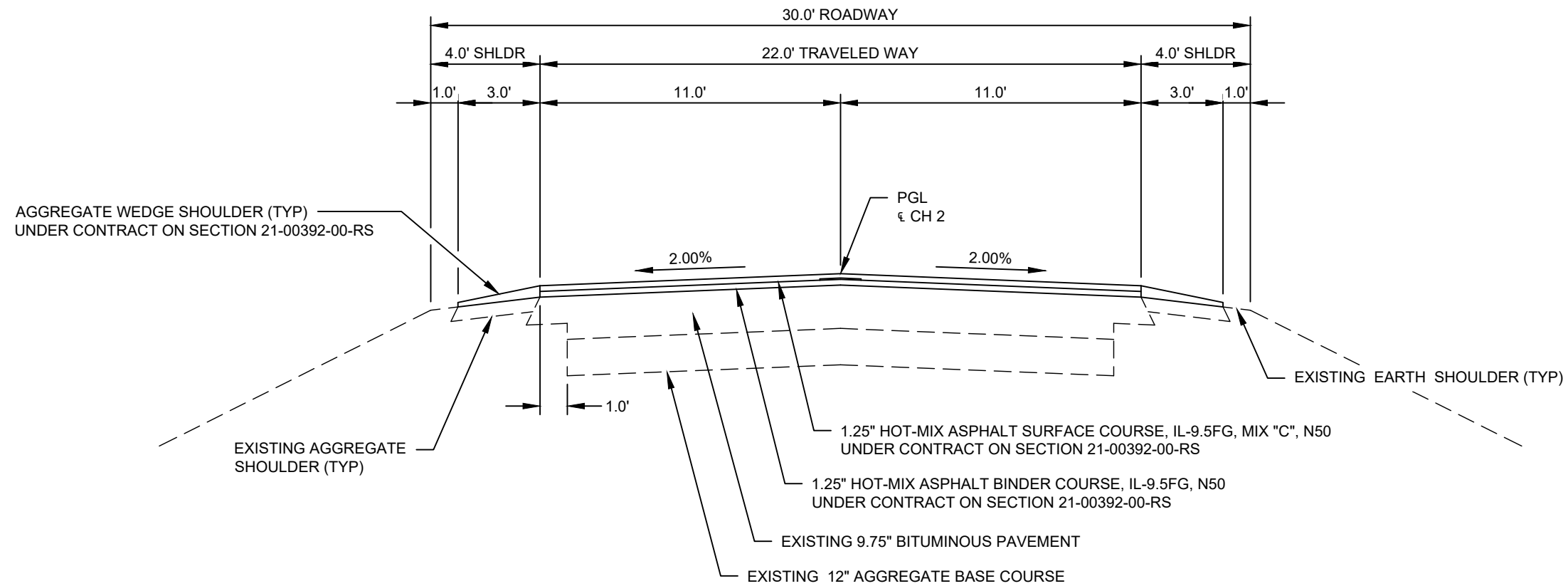
CH 2

CONTRACT NO.

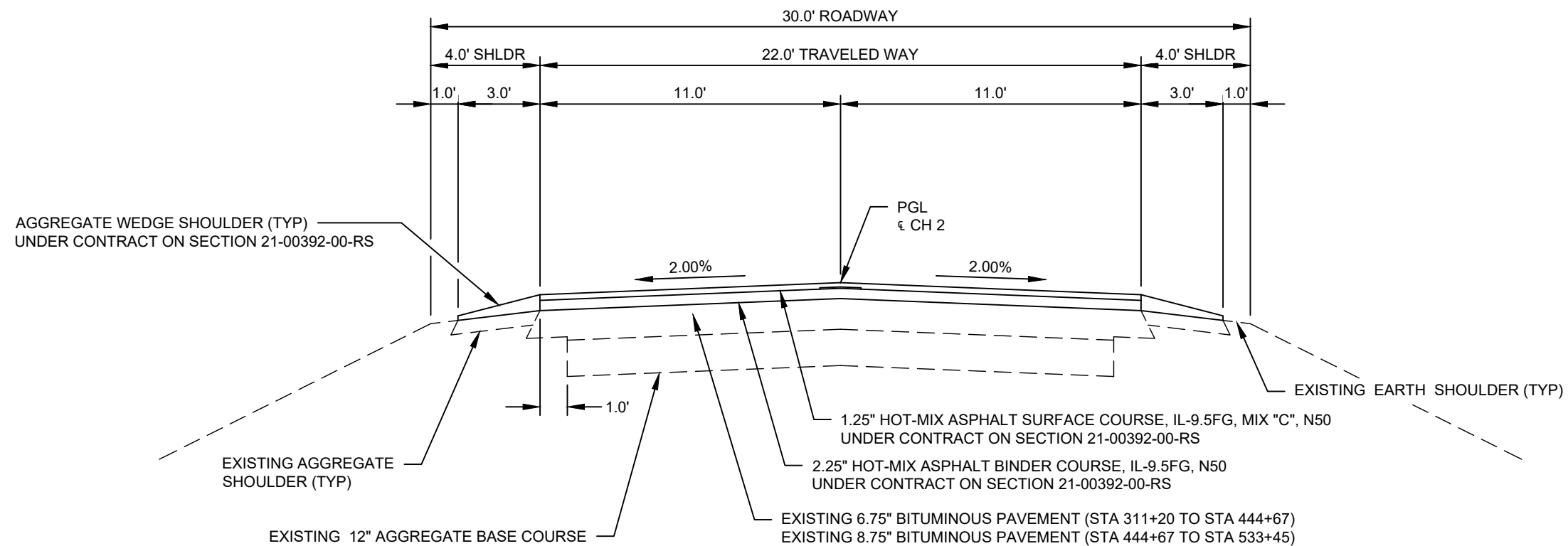
87847

SHEET NO.

4 of 24



**EXISTING TYPICAL SECTION**  
STA 229+55 TO STA 311+20



**EXISTING TYPICAL SECTION**  
STA 311+20 TO STA 533+45

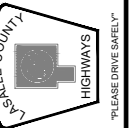
SUPERELEVATION TYPICALS NOT SHOWN,  
EXISTING PAVEMENT STRUCTURE DOES NOT CHANGE

SECTION

21-00392-01-RS

EXISTING  
TYPICAL SECTIONS

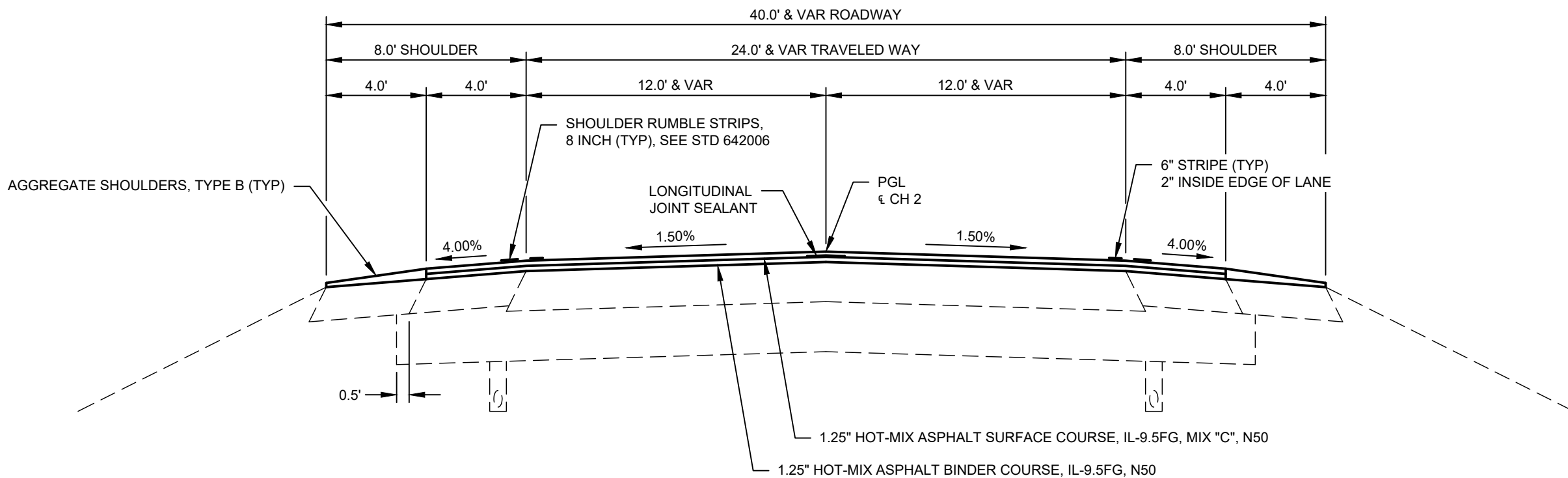
LASALLE COUNTY  
HIGHWAY DEPARTMENT  
1400 N. 27TH ROAD - P.O. BOX 128 - OTTAWA, ILLINOIS 61350  
PHONE (815) 434-0743 FAX (815) 434-0747



HWY. NO.  
CH 2

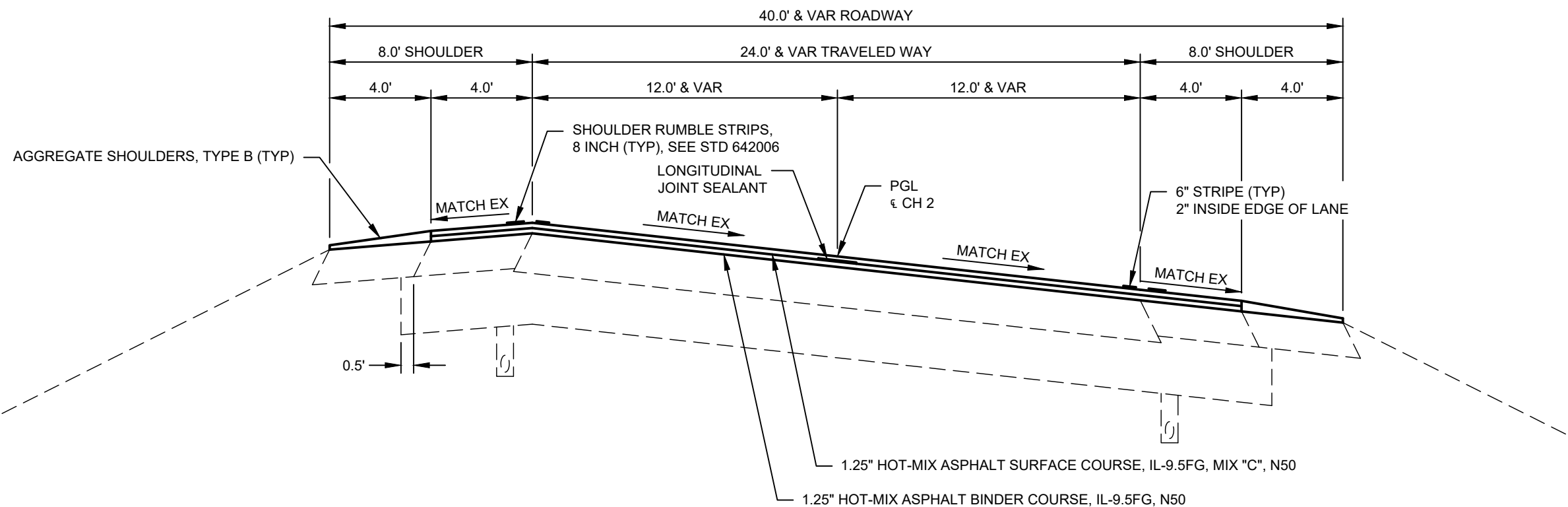
CONTRACT  
NO.  
87847

SHEET NO.  
5 of 24



**PROPOSED TYPICAL SECTION**

STA 0+00 TO STA 0+61.27  
STA 12+83.66 TO STA 15+00



**PROPOSED TYPICAL SECTION**

STA 0+61.27 TO STA 5+72.46

SECTION

21-00392-01-RS

PROPOSED  
TYPICAL SECTIONS

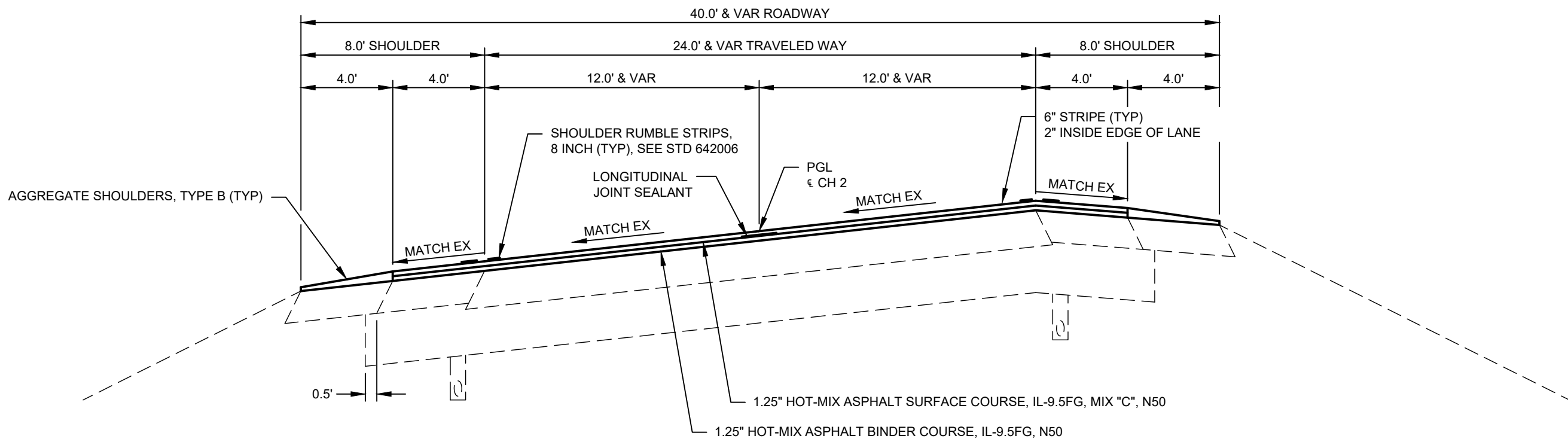
LASALLE COUNTY  
HIGHWAY DEPARTMENT  
1400 N. 27TH ROAD - P.O. BOX 128 - OTTAWA, ILLINOIS 61350  
PHONE (815) 434-0743 FAX (815) 434-0747



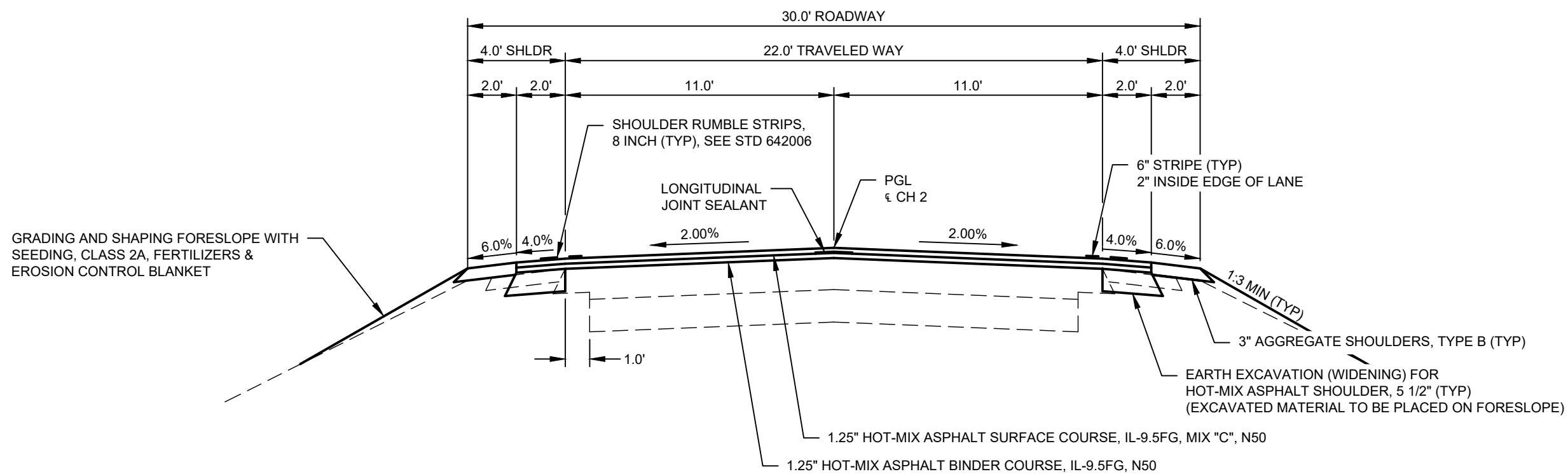
HWY. NO.  
CH 2

CONTRACT  
NO.  
87847


SHEET NO.  
6 of 24

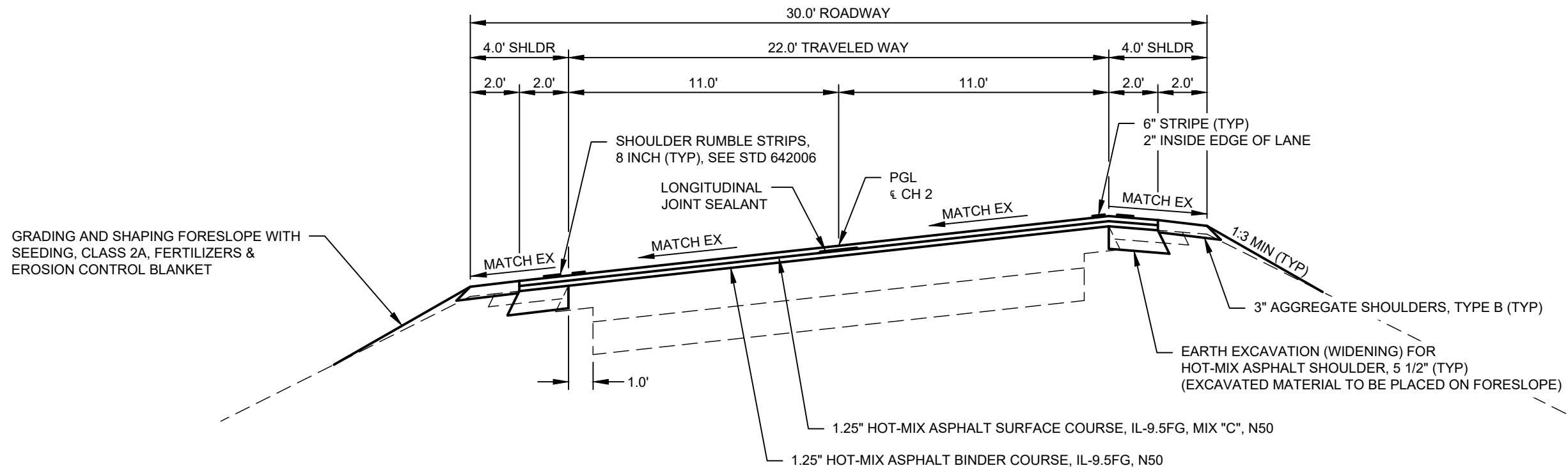


**PROPOSED TYPICAL SECTION**  
 STA 5+72.46 TO STA 12+83.66

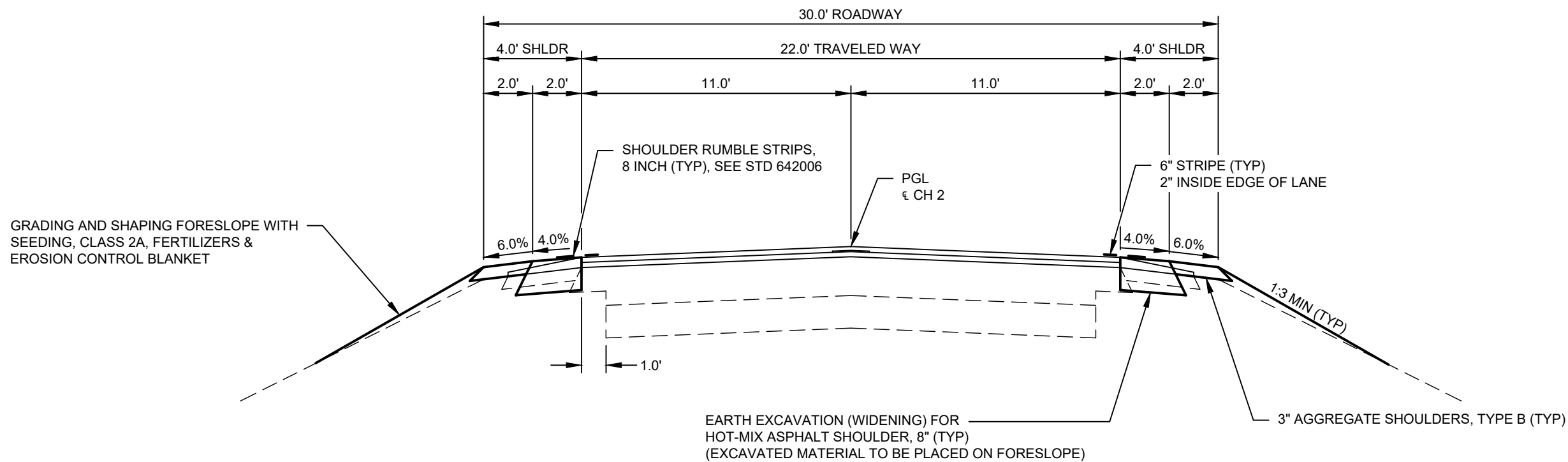


**PROPOSED TYPICAL SECTION**  
 STA 15+00 TO STA 185+37.30  
 STA 190+62.70 TO STA 230+15


SECTION	21-00392-01-RS
<b>PROPOSED TYPICAL SECTIONS</b>	
<b>LASALLE COUNTY HIGHWAY DEPARTMENT</b> 1400 N. 27TH ROAD - P.O. BOX 128 - OTTAWA, ILLINOIS 61350 PHONE (815) 434-0743 FAX (815) 434-0747	
 <small>PLEASE DRIVE SAFELY</small>	
HWY. NO.	CH 2
CONTRACT NO.	87847
SHEET NO.	7 of 24



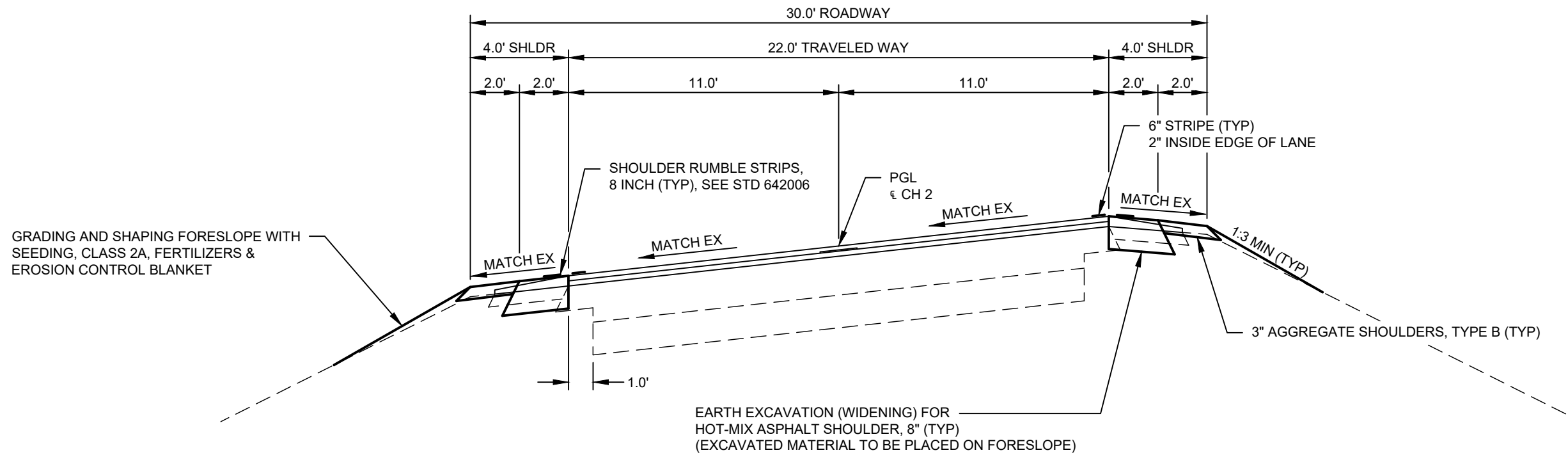
**PROPOSED TYPICAL SECTION**  
 STA 185+37.30 TO STA 190+62.70



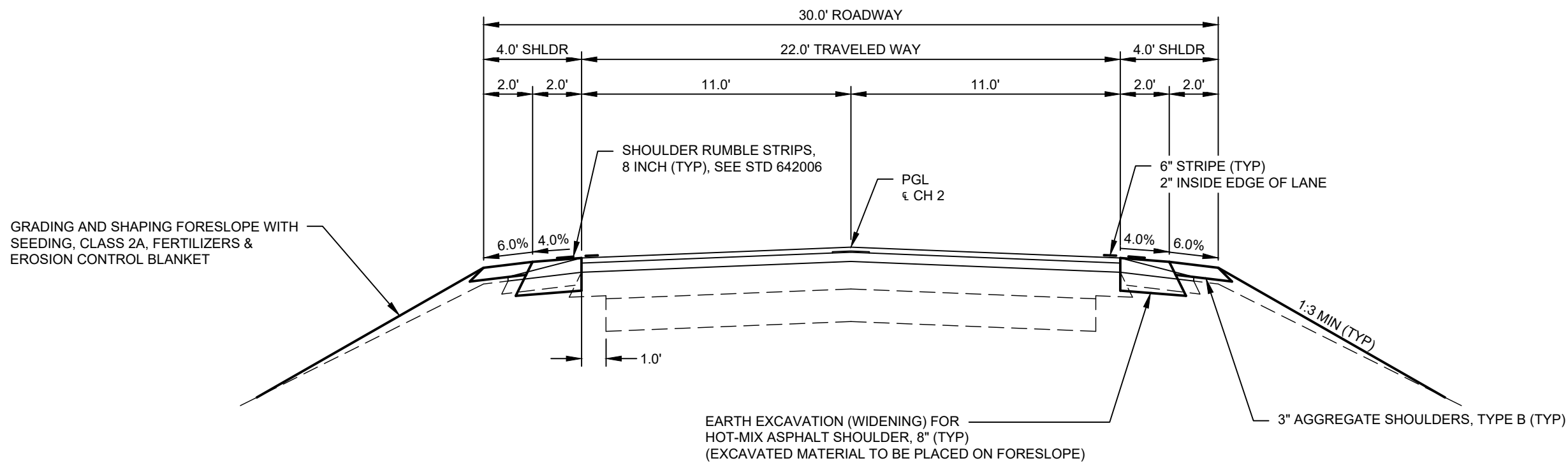
**PROPOSED TYPICAL SECTION**  
 STA 230+15 TO STA 250+86  
 STA 257+14 TO STA 311+52

SECTION	21-00392-01-RS
<b>PROPOSED TYPICAL SECTIONS</b>	
<b>LASALLE COUNTY HIGHWAY DEPARTMENT</b> <small>1400 N. 27TH ROAD - P.O. BOX 128 - OTTAWA, ILLINOIS 61350        PHONE (815) 434-0743 FAX (815) 434-0747</small>	
	
HWY. NO.	CH 2
CONTRACT NO.	87847
SHEET NO.	8 of 24





**PROPOSED TYPICAL SECTION**  
 STA 250+86 TO STA 257+14



**PROPOSED TYPICAL SECTION**  
 STA 311+52 TO STA 441+60.98  
 STA 446+80.31 TO STA 521+94.67  
 STA 528+95.23 TO STA 533+45

SECTION  
 21-00392-01-RS

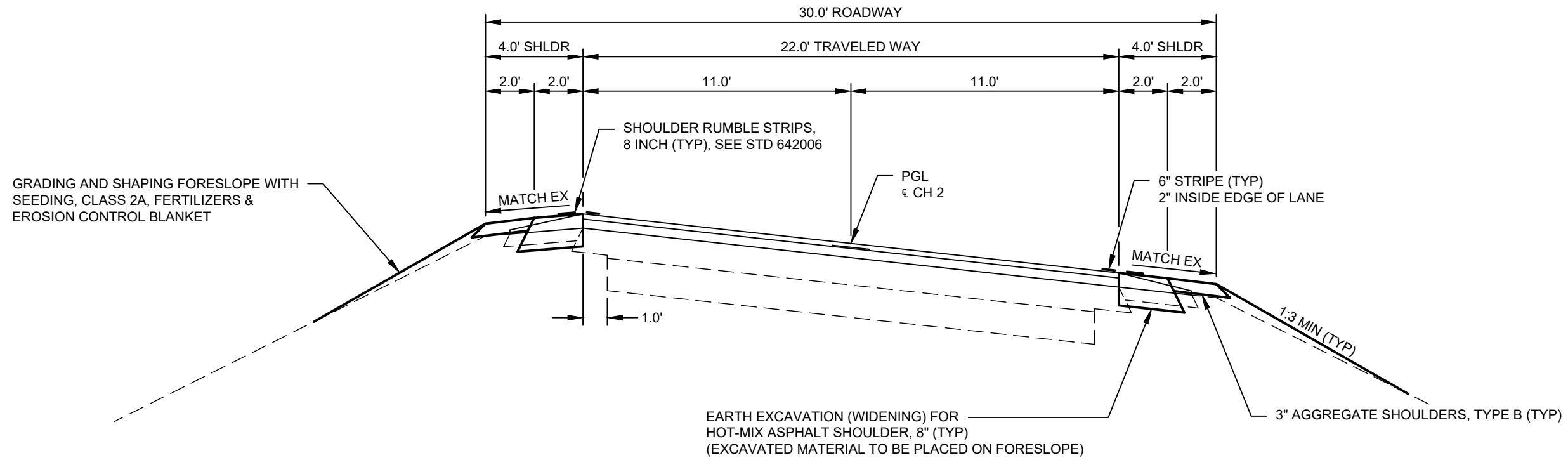
PROPOSED  
 TYPICAL SECTIONS

LASALLE COUNTY  
 HIGHWAY DEPARTMENT  
 1400 N. 27TH ROAD - P.O. BOX 128 - OTTAWA, ILLINOIS 61350  
 PHONE (815) 434-0743 FAX (815) 434-0747  
 LASALLE COUNTY HIGHWAYS  
 PLEASE DRIVE SAFELY

HWY. NO.  
 CH 2

CONTRACT NO.  
 87847

SHEET NO.  
 9 of 24



**PROPOSED TYPICAL SECTION**

STA 441+60.98 TO STA 446+80.31  
 STA 521+94.67 TO STA 528+95.23

SECTION

21-00392-01-RS

PROPOSED  
 TYPICAL SECTIONS

LASALLE COUNTY  
 HIGHWAY DEPARTMENT  
 1400 N. 27TH ROAD - P.O. BOX 128 - OTTAWA, ILLINOIS 61350  
 PHONE (815) 434-0743 FAX (815) 434-0747



HWY. NO.

CH 2

CONTRACT NO.

87847

SHEET NO.

10 of 24

**HMA SHOULDER SCHEDULE**

STATION TO STATION	LENGTH	WIDTH	EARTH EXC WID	HMA SHOULDERS, 5 1/2"	HMA SHOULDERS, 8"	* BIT MATLS TACK CT	GRAD & SHAP FORESLOPE	** SEEDING CL 2A	** NITROGEN FERT NUTR	** PHOSPHORUS FERT NUTR	** POTASSIUM FERT NUTR	** EROSION CONTROL BLANKET	**TEMP EROSION CONTROL SEED
	FOOT	FOOT	CU YD	SQ YD	SQ YD	POUND	UNIT	ACRE	POUND	POUND	POUND	SQ YD	POUND
<b>LEFT SIDE</b>													
15+00 TO 229+55	21,455	2	814.1	4,781.1		119.5	215.2	4.93	444.5	444.5	444.5	23,904.8	493.9
229+55 TO 438+86	20,931	2	1,202.4		4,638.0	116.0	208.7	4.79	431.2	431.2	431.2	23,188.4	479.1
438+86 TO 439+31	45								OMIT - EX PAVED SHOULDER				
439+31 TO 467+11	2,780	2	160.2		617.8	15.4	27.8	0.64	57.4	57.4	57.4	3,087.9	63.8
467+11 TO 468+00	89								OMIT - EX PAVED SHOULDER				
468+00 TO 533+45	6,545	2	377.1		1,454.4	36.4	65.5	1.50	135.3	135.3	135.3	7,274.5	150.3
<b>LEFT SUB-TOTAL =</b>			<b>2,553.8</b>	<b>4,781.1</b>	<b>6,710.2</b>	<b>287.3</b>	<b>517.2</b>	<b>11.90</b>	<b>1,068.4</b>	<b>1,068.4</b>	<b>1,068.4</b>	<b>57,455.6</b>	<b>1,187.1</b>
<b>RIGHT SIDE</b>													
15+00 TO 165+83	15,083.0	2.0	570.8	3,351.8		83.8	150.8	3.46	311.7	311.7	311.7	16,760.9	346.3
165+83 TO 166+22	39.0								OMIT - EX PAVED SHOULDER				
166+22 TO 229+55	6,333.0	2.0	241.9	1,420.7		35.5	63.3	1.47	132.1	132.1	132.1	7,105.1	146.3
229+55 TO 302+25	7,270.0	2.0	415.4		1,602.2	40.1	72.1	1.66	149.0	149.0	149.0	8,010.2	165.5
302+25 TO 305+86	361.0								OMIT - EX PAVED SHOULDER				
305+86 TO 523+90	21,804.0	2.0	1,256.2		4,845.3	121.1	218.0	5.01	450.9	450.9	450.9	24,229.0	500.6
523+90 TO 530+04	614.0								OMIT - EX PAVED SHOULDER				
530+04 TO 533+45	341.0	2.0	19.6		75.8	1.9	3.4	0.08	7.0	7.0	7.0	377.5	7.8
<b>RIGHT SUB-TOTAL =</b>			<b>2,503.9</b>	<b>4,772.5</b>	<b>6,523.3</b>	<b>282.4</b>	<b>508.2</b>	<b>11.7</b>	<b>1,050.3</b>	<b>1,050.3</b>	<b>1,050.3</b>	<b>56,482.7</b>	<b>1,167.0</b>
<b>TOTALS =</b>			<b>5,057.7</b>	<b>9,553.6</b>	<b>13,233.5</b>	<b>569.7</b>	<b>1,025.4</b>	<b>23.5</b>	<b>2,118.7</b>	<b>2,118.7</b>	<b>2,118.7</b>	<b>113,938.3</b>	<b>2,354.1</b>

\* 1 APPLICATION OF TACK COAT

\*\* 10' FORESLOPE DISTURBANCE ALONG HMA SHOULDER CONSTRUCTION

INLET AND PIPE PROTECTION		
STATION	SIDE	EACH
32+88	LT	1
59+24	LT	1
74+42	LT	1
109+34	LT	1
149+93	LT	1
151+65	LT	1
163+52	RT	1
196+29	LT	1
277+32	LT	1
297+37	LT	1
311+05	LT	1
<b>TOTAL =</b>		<b>11</b>

TEMPORARY DITCH CHECK		
STATION	SIDE	FOOT
16+33	LT	10
18+33	LT	10
48+35	LT	10
50+35	LT	10
92+49	LT	10
92+49	RT	10
138+15	LT	10
138+15	RT	10
140+15	LT	10
140+15	RT	10
215+59	LT	10
215+59	RT	10
217+59	LT	10
217+59	RT	10
260+12	LT	10
262+12	LT	10
331+34	LT	10
333+34	LT	10
367+25	LT	10
369+25	LT	10
384+55	LT	10
386+55	LT	10
401+40	LT	10
402+65	LT	10
415+43	LT	10
417+43	LT	10
446+40	RT	10
447+94	RT	10
480+24	LT	10
482+24	LT	10
494+38	LT	10
496+30	LT	10
514+80	LT	10
514+80	RT	10
515+67	LT	10
515+67	RT	10
532+00	LT	10
532+00	RT	10
534+00	LT	10
534+00	RT	10
<b>TOTAL =</b>		<b>400</b>

SECTION

21-00392-01-RS

**SCHEDULE OF QUANTITIES**

**LASALLE COUNTY**  
**HIGHWAY DEPARTMENT**  
 1400 N. 27TH ROAD - P.O. BOX 128 - OTTAWA, ILLINOIS 61350  
 PHONE (815) 434-0743 FAX (815) 434-0747



HWY. NO.

CH 2

CONTRACT NO.  
87847

SHEET NO.  
11 of 24

PAVEMENT SCHEDULE											
STATION TO STATION	SURFACE WIDTH	HMA SHOULDER WIDTH	AGGREGATE SHOULDER WIDTH	LENGTH	AREA	BITUMINOUS MATERIALS (PRIME COAT)	BITUMINOUS MATERIALS (TACK COAT)	LONGITUDINAL JOINT SEALANT	HMA BINDER COURSE, IL-9.5FG, N50	HMA SURFACE COURSE, IL-9.5FG, MIX "C", N50	AGGREGATE SHOULDERS, TYPE B
							2 APPLICATIONS		1.25"	1.25"	
	FOOT	FOOT	FOOT	FOOT	SQ YD	POUND	POUND	FOOT	TON	TON	TON
0+00 TO 15+00	24 & VARIES	4	4	1,500	5,333.3	0.0	3,600.0	1,500.0	373.3	373.3	151.8
15+00 TO 230+15 *	22	2 **	2	21,515	62,154.4	0.0	41,954.2	21,515.0	4,350.8	4,350.8	1633.5
230+15 TO 533+45	0 ***	0 ***	2	30,330	0.0	0.0	0.0	0.0	0.0	0.0	2302.8
					0.0	0.0	0.0	0.0	0.0	0.0	0.0
EXISTING ISOLATED PAVED SHOULDER (STA 15+00 TO 230+15)					30.3	0.0	20.5	0.0	2.1	2.1	0.0
**** INTERSECTIONS, ENTRANCES, & MAILBOX TURNOUTS					2,277.9	161.6	1,078.1	0.0	35.3	225.1	202.0
<b>TOTALS =</b>					<b>69,795.9</b>	<b>161.6</b>	<b>46,652.8</b>	<b>23,015.0</b>	<b>4,761.5</b>	<b>4,951.3</b>	<b>4,290.1</b>

\*60' ADDED TO REMOVE SECTION 21-00392-00-RS BUTT JOINT  
 \*\*EXISTING ISOLATED LOCATIONS OF PAVED SHOULDER ACCOUNTED FOR BELOW  
 \*\*\*RESURFACING OF ROADWAY & EXISTING ISOLATED PAVED SHOULDERS INCLUDED IN SECTION 21-00392-00-RS  
 \*\*\*\*SEE SHEET 13 OF 24

EXISTING ISOLATED PAVED SHOULDERS			
STATION TO STATION	SIDE	WIDTH	AREA
		FOOT	SQ YD
165+83 TO 166+22*	RT	7	30.3
<b>TOTAL =</b>		<b>30.3</b>	

RUMBLE STRIP		
LOCATION	DESCRIPTION	AREA
		SQ FT
SB LANE @ US RTE 52 INT	3 @ 12' X 25'	900.0
<b>TOTAL =</b>		<b>900.0</b>

\*EXISTING PAVED SHOULDER WIDTH = 9', SUBTRACT THE 2' ACCOUNTED FOR ABOVE

PAVEMENT MARKING SCHEDULE							
STATION TO STATION	LOCATION	DESCRIPTION	PAINT PAVEMENT MARKING				PREFORMED PLASTIC PAVEMENT MARKING, TYPE B - INLAID
			LINE 4"	LINE 6"	LINE 8"	LINE 12"	LINE 24"
			FOOT	FOOT	FOOT	FOOT	FOOT
0+00 TO 533+45	EDGE LINE LT	WHITE, OMIT SIDE ROADS		52,213			
0+00 TO 533+45	EDGE LINE RT	WHITE, OMIT SIDE ROADS		51,370			
0+17.50 TO 0+33.30	US RTE 52 INT	WHITE - STOP BARS					28
0+00 TO 0+55.50	US RTE 52 INT	WHITE - ISLAND STRIPING			305	129	
0+00 TO 7+98	CENTERLINE	YELLOW - DOUBLE YELLOW	1,596				
7+98 TO 18+01	CENTERLINE	YELLOW - SOLID LT / SKIP RT	1,379				
18+01 TO 119+21	CENTERLINE	YELLOW - SKIP DASH	3,795				
119+21 TO 125+61	CENTERLINE	YELLOW - SKIP LT / SOLID RT	880				
125+61 TO 130+35	CENTERLINE	YELLOW - SKIP DASH	178				
130+35 TO 136+79	CENTERLINE	YELLOW - SOLID LT / SKIP RT	886				
136+79 TO 230+15	CENTERLINE	YELLOW - SKIP DASH	3,501				
<b>TOTAL =</b>			<b>12,215.0</b>	<b>103,583.0</b>	<b>305.0</b>	<b>129.0</b>	<b>28.0</b>

SHOULDER RUMBLE STRIPS, 8 INCH			
STATION TO STATION	LOCATION	DESCRIPTION	FOOT
0+00 TO 533+45	SHOULDER LT	OMIT SIDE RD, ENT, MBTO	51,999.0
0+00 TO 533+45	SHOULDER RT	OMIT SIDE RD, ENT, MBTO	49,439.0
<b>TOTAL =</b>			<b>101,438.0</b>

HMA SURFACE REMOVAL, 1 1/4"		
STATION TO STATION	SIDE	AREA
		SQ YD
0+00 TO 1+53	LT & RT	1,242.0
<b>TOTAL =</b>		<b>1,242.0</b>

HMA SURFACE REMOVAL - BUTT JOINT			
STATION	SIDE	TYPE	AREA
			SQ YD
1+53	CL	N OF US 52 INT	213.3
116+27	LT	N 40TH	23.3
116+29	RT	N 4009TH	22.2
144+15	RT	PE	22.2
158+58	RT	N 4070TH	24.4
159+75	RT	PE	17.8
163+12	RT	PE	22.2
165+61	RT	PE	44.4
166+33	RT	N 4088TH	22.2
168+95	RT	PE	24.4
173+61	LT	N 41ST	23.3
173+71	RT	N 41ST	23.3
228+72	LT	N 42ND	22.2
228+72	RT	N 42ND	22.2
229+85	CL	RESURF END	73.3
230+15	CL	RESURF END	73.3
<b>TOTAL =</b>			<b>674.0</b>

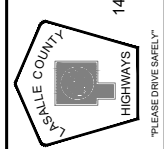
SHORT TERM PAVEMENT MARKING		
STATION TO STATION	CENTERLINE	STOP BAR
	SKIP DASH - YELLOW - 4"	SOLID - WHITE - 4"
	3 APPLICATIONS	
	FOOT	
0+00 TO 230+15	17,280	504
<b>TOTAL =</b>	<b>17,784</b>	

HMA SURFACE REMOVAL, 3/4"		
LOCATION	DESCRIPTION	AREA
		SQ YD
SB LANE @ US RTE 52 INT	3 @ 12' X 25'	100.0
<b>TOTAL =</b>		<b>100.0</b>

SECTION 21-00392-01-RS

SCHEDULE OF QUANTITIES

LASALLE COUNTY HIGHWAY DEPARTMENT  
 1400 N. 27TH ROAD - P.O. BOX 128 - OTTAWA, ILLINOIS 61350  
 PHONE (815) 434-0743 FAX (815) 434-0747



HWY. NO. CH 2

CONTRACT NO. 87847

SHEET NO. 12 of 24

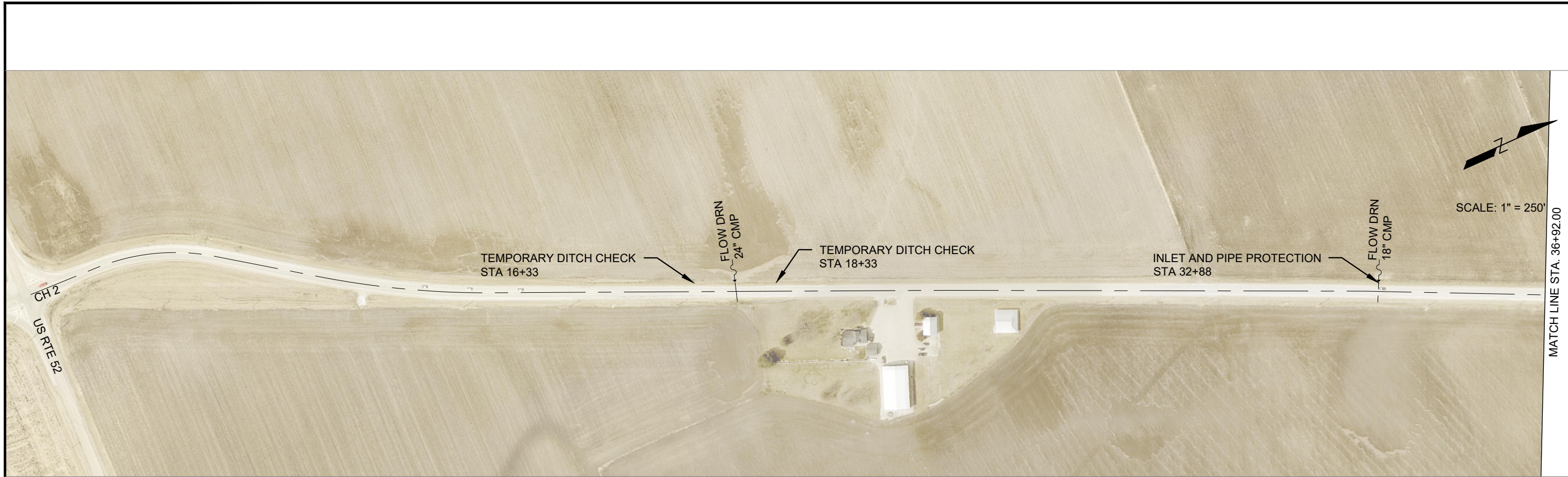
PLEASE DRIVE SAFELY

Table with 12 columns: STATION, SIDE, TYPE, EX SURF, THROAT WIDTH, O/S FROM EOP, AREA, BIT MATL PRIME CT, BIT MATL TACK CT, HMA BINDER, HMA SURFACE, \*AGG SHLDRS. Contains intersection data for 1/2 of the project.

Table with 12 columns: STATION, SIDE, TYPE, EX SURF, THROAT WIDTH, O/S FROM EOP, AREA, BIT MATL PRIME CT, BIT MATL TACK CT, HMA BINDER, HMA SURFACE, \*AGG SHLDR. Contains intersection data for 2/2 of the project, including a SUBTOTALS and TOTALS row.

SECTION 21-00392-01-RS
SCHEDULE OF QUANTITIES
LASALLE COUNTY HIGHWAY DEPARTMENT
1400 N. 27TH ROAD - P.O. BOX 128 - OTTAWA, ILLINOIS 61350
PHONE (815) 434-0743 FAX (815) 434-0747
HWY. NO. CH 2
CONTRACT NO. 87847
SHEET NO. 13 of 24

\*AGGREGATE SHOULDERS, TYPE B ARE ESTIMATED AT 5 TONS PER FIELD ENTRANCE AND 1 TON PER PRIVATE ENTRANCE, COMMERCIAL ENTRANCE AND INTERSECTION.



MATCH LINE STA. 36+92.00

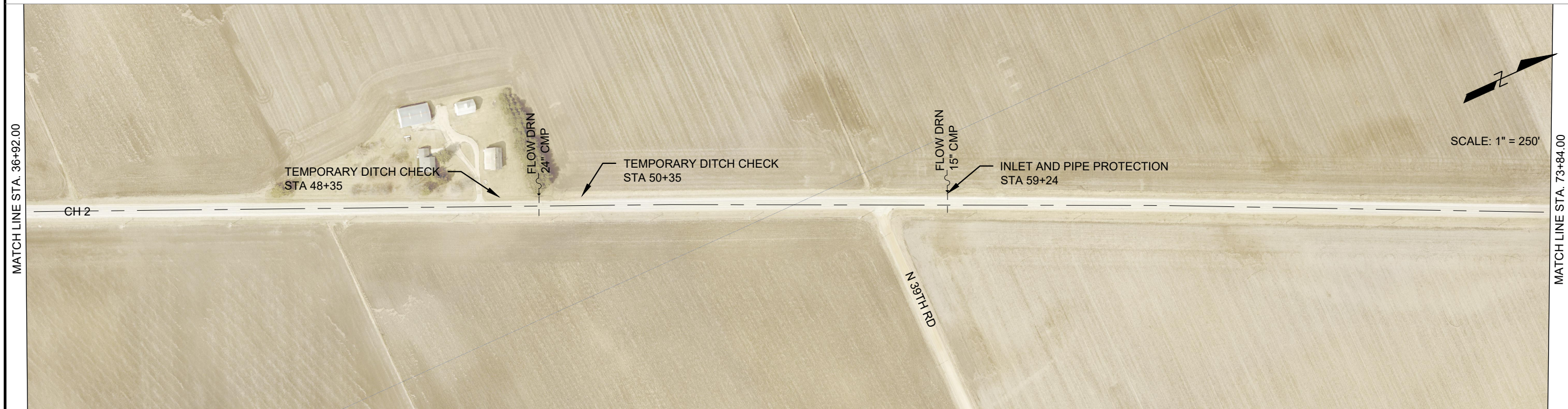
SCALE: 1" = 250'



**EROSION CONTROL PLAN**  
**STA 0+00.00 - 73+84.00**

SECTION

21-00392-01-RS



MATCH LINE STA. 36+92.00

MATCH LINE STA. 73+84.00

SCALE: 1" = 250'



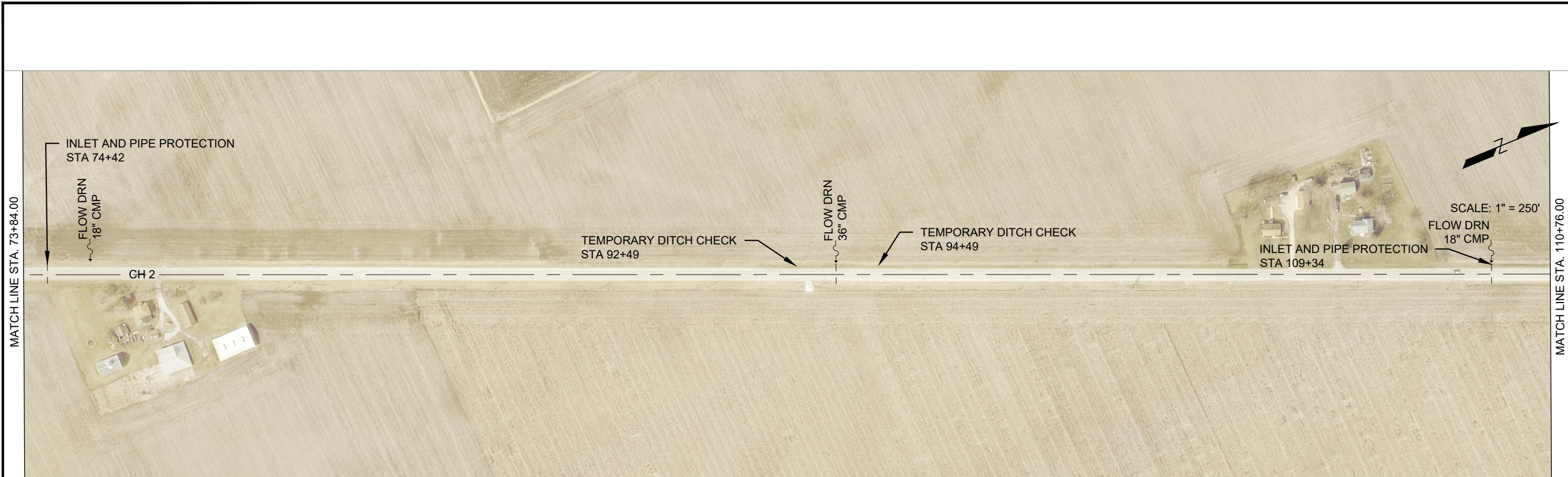
**LASALLE COUNTY**  
**HIGHWAY DEPARTMENT**  
 1400 N. 27TH ROAD - P.O. BOX 128 - OTTAWA, ILLINOIS 61350  
 PHONE (815) 434-0743 FAX (815) 434-0747



HWY. NO.  
 CH 2

CONTRACT NO.  
 87847

SHEET NO.  
 14 of 24



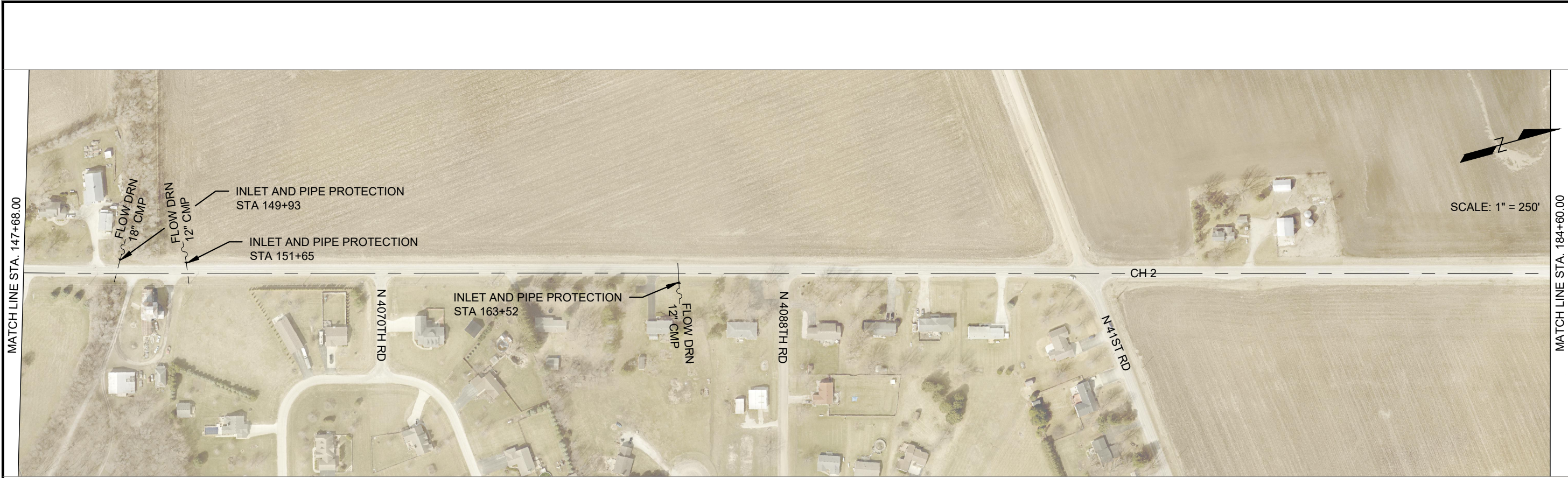
SECTION  
21-00392-01-RS

EROSION CONTROL PLAN  
STA 73+84.00 - 147+68.00

LASALLE COUNTY  
HIGHWAY DEPARTMENT  
1400 N. 27TH ROAD - P.O. BOX 128 - OTTAWA, ILLINOIS 61350  
PHONE (815) 434-0743 FAX (815) 434-0747  
LASALLE COUNTY HIGHWAYS  
PLEASE DRIVE SAFELY

HWY. NO.  
CH 2  
CONTRACT NO.  
87847

SHEET NO.  
15 of 24



MATCH LINE STA. 147+68.00

MATCH LINE STA. 184+60.00

SCALE: 1" = 250'



SECTION  
**EROSION CONTROL PLAN**  
 STA 147+68.00 - 221+52.00

21-00392-01-RS



MATCH LINE STA. 184+60.00

MATCH LINE STA. 221+52.00

SCALE: 1" = 250'



LASALLE COUNTY  
 HIGHWAY DEPARTMENT  
 1400 N. 27TH ROAD - P.O. BOX 128 - OTTAWA, ILLINOIS 61350  
 PHONE (815) 434-0743 FAX (815) 434-0747

HWY. NO.  
 CH 2

CONTRACT NO.  
 87847

SHEET NO.  
 16 of 24



MATCH LINE STA. 221+52.00



MATCH LINE STA. 258+44.00

SECTION

21-00392-01-RS

EROSION CONTROL PLAN  
STA 221+52.00 - 295+36.00

MATCH LINE STA. 258+44.00



MATCH LINE STA. 295+36.00

LASALLE COUNTY  
HIGHWAY DEPARTMENT  
1400 N. 27TH ROAD - P.O. BOX 128 - OTTAWA, ILLINOIS 61350  
PHONE (815) 434-0743 FAX (815) 434-0747



HWY. NO.

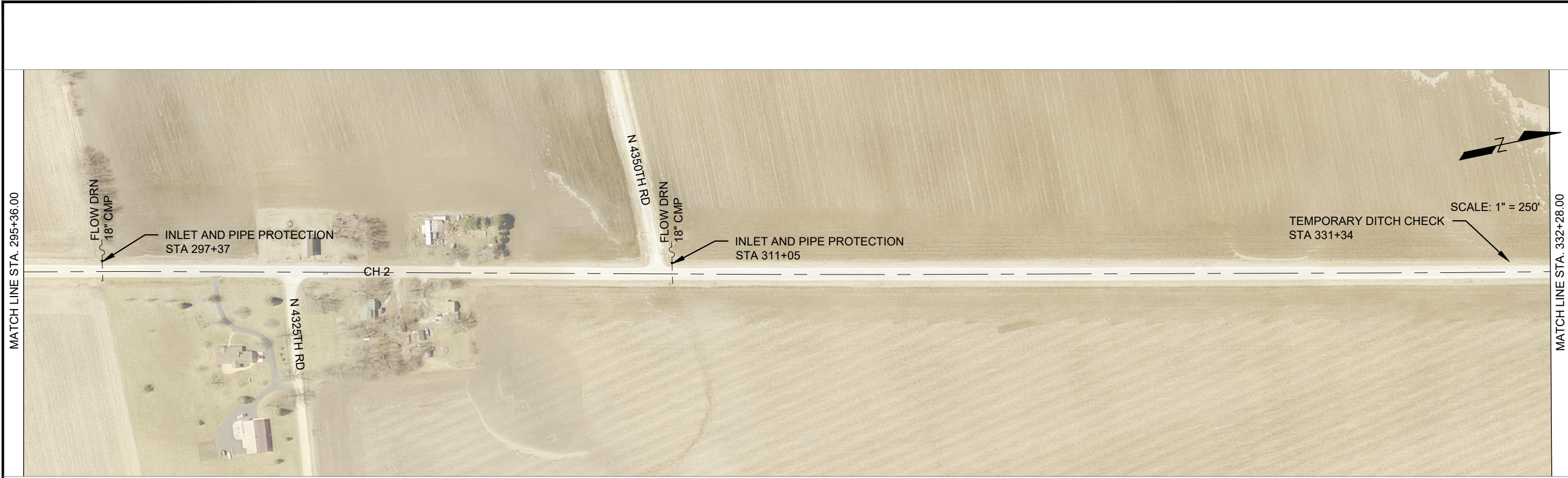
CH 2

CONTRACT NO.

87847

SHEET NO.

17 of 24



SECTION  
21-00392-01-RS

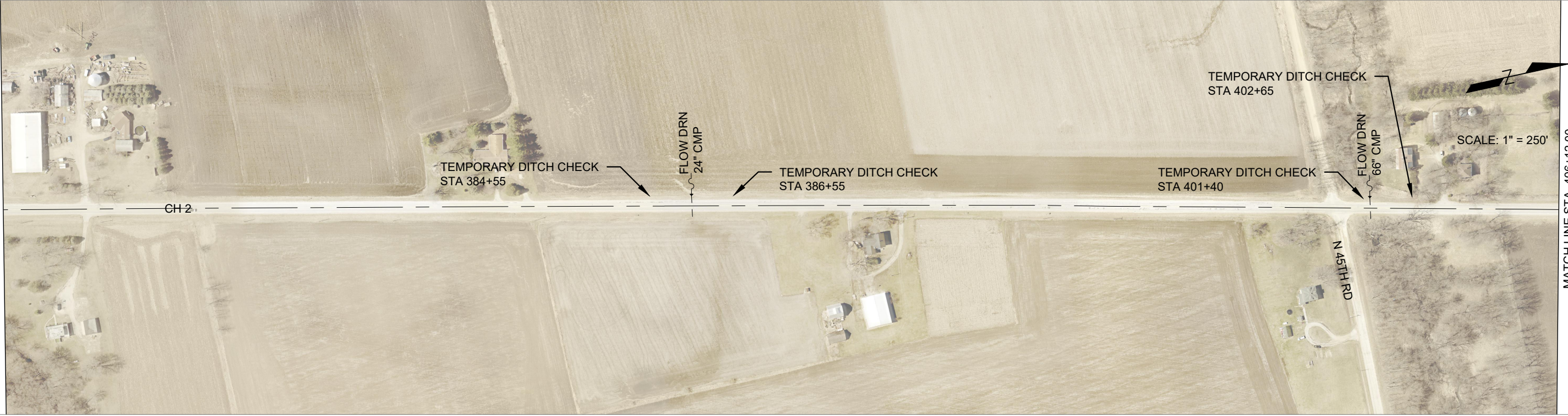
EROSION CONTROL PLAN  
STA 295+36.00 - 369+20.00

LASALLE COUNTY  
HIGHWAY DEPARTMENT  
1400 N. 27TH ROAD - P.O. BOX 128 - OTTAWA, ILLINOIS 61350  
PHONE (815) 434-0743 FAX (815) 434-0747  
LASALLE COUNTY HIGHWAYS  
PLEASE DRIVE SAFELY

HWY. NO.  
CH 2  
CONTRACT NO.  
87847

SHEET NO.  
18 of 24

MATCH LINE STA. 369+20.00



MATCH LINE STA. 406+12.00

MATCH LINE STA. 406+12.00



MATCH LINE STA. 443+04.00

SECTION

21-00392-01-RS

EROSION CONTROL PLAN  
STA 369+20.00 - 443+04.00

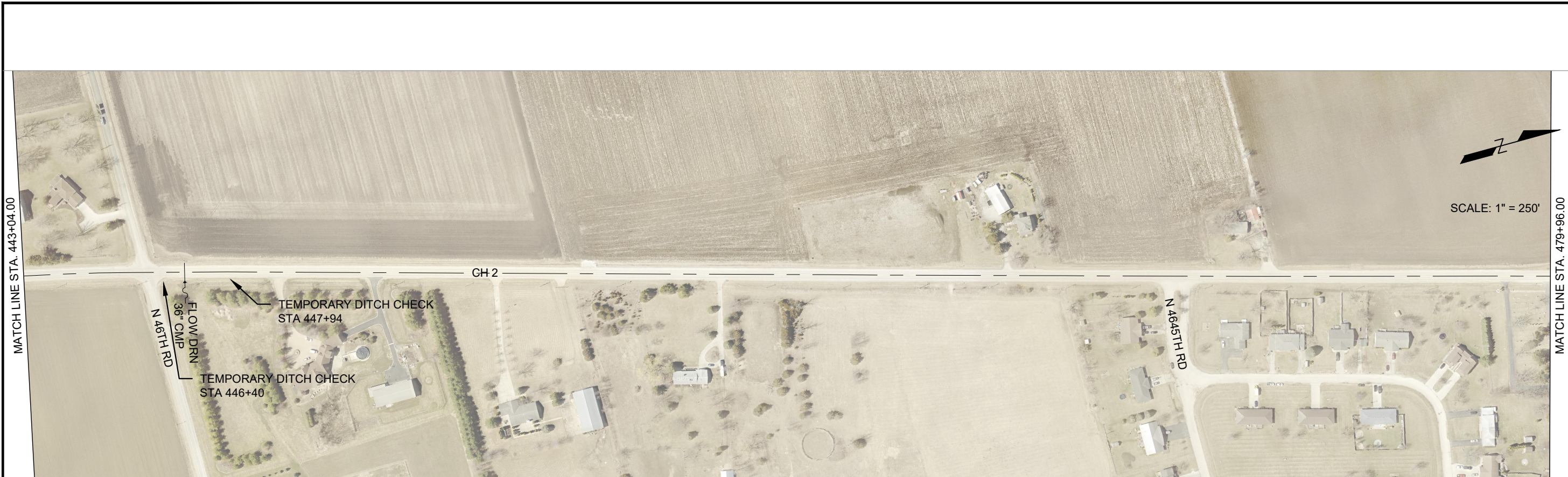
LASALLE COUNTY  
HIGHWAY DEPARTMENT  
1400 N. 27TH ROAD - P.O. BOX 128 - OTTAWA, ILLINOIS 61350  
PHONE (815) 434-0743 FAX (815) 434-0747



HWY. NO.  
CH 2

CONTRACT NO.  
87847

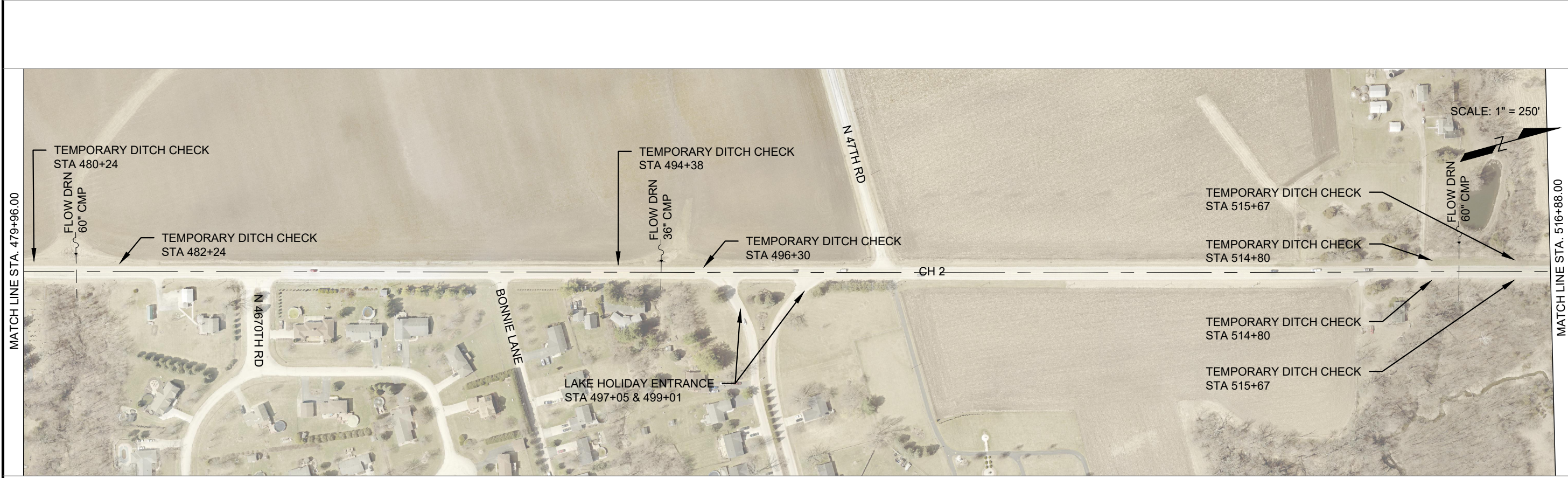
SHEET NO.  
19 of 24



SCALE: 1" = 250'

SECTION  
**EROSION CONTROL PLAN**  
 STA 443+04.00 - 516+88.00

21-00392-01-RS



SCALE: 1" = 250'

MATCH LINE STA. 479+96.00

MATCH LINE STA. 516+88.00

LASALLE COUNTY  
**HIGHWAY DEPARTMENT**  
 1400 N. 27TH ROAD - P.O. BOX 128 - OTTAWA, ILLINOIS 61350  
 PHONE (815) 434-0743 FAX (815) 434-0747

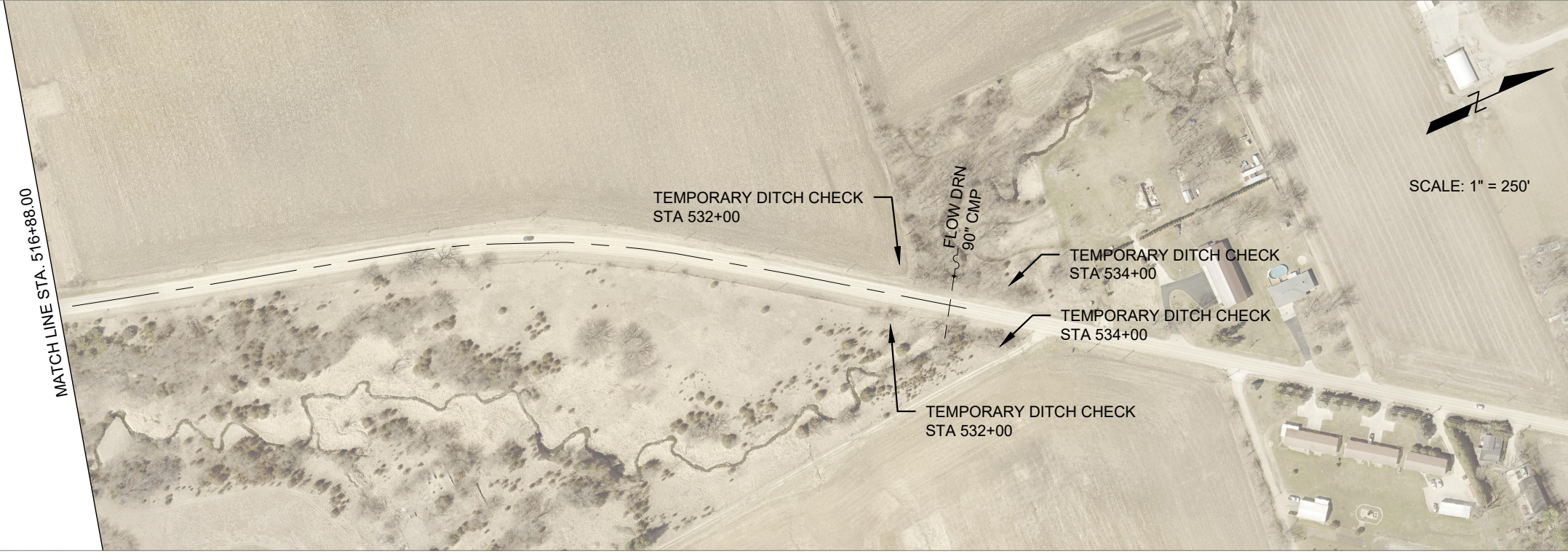
HWY. NO.  
 CH 2

CONTRACT NO.  
 87847

SHEET NO.  
 20 of 24



PLEASE DRIVE SAFELY



SECTION

21-00392-01-RS

EROSION CONTROL PLAN  
 STA 516+88.00 - 533+45.00

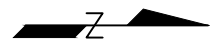
LASALLE COUNTY  
 HIGHWAY DEPARTMENT  
 1400 N. 27TH ROAD - P.O. BOX 128 - OTTAWA, ILLINOIS 61350  
 PHONE (815) 434-0743 FAX (815) 434-0747



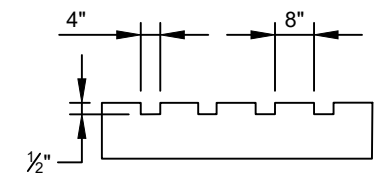
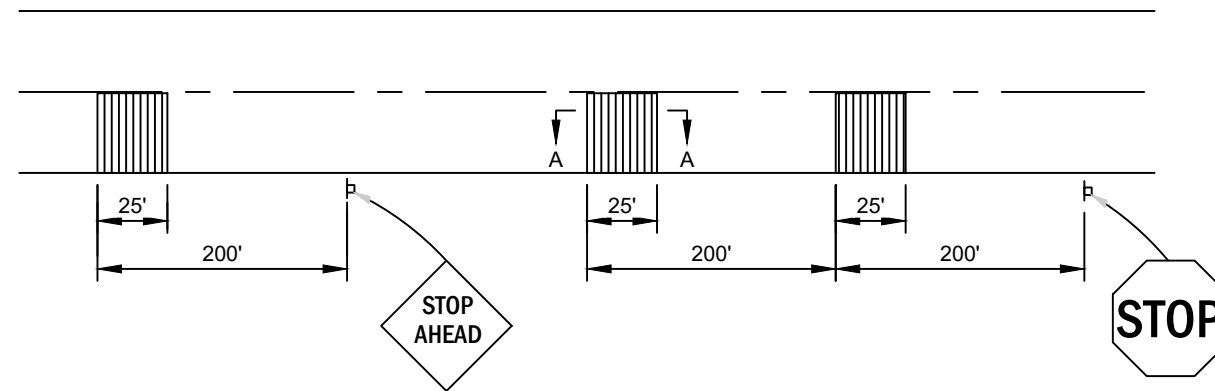
HWY. NO.  
 CH 2

CONTRACT NO.  
 87847

SHEET NO.  
 21 of 24

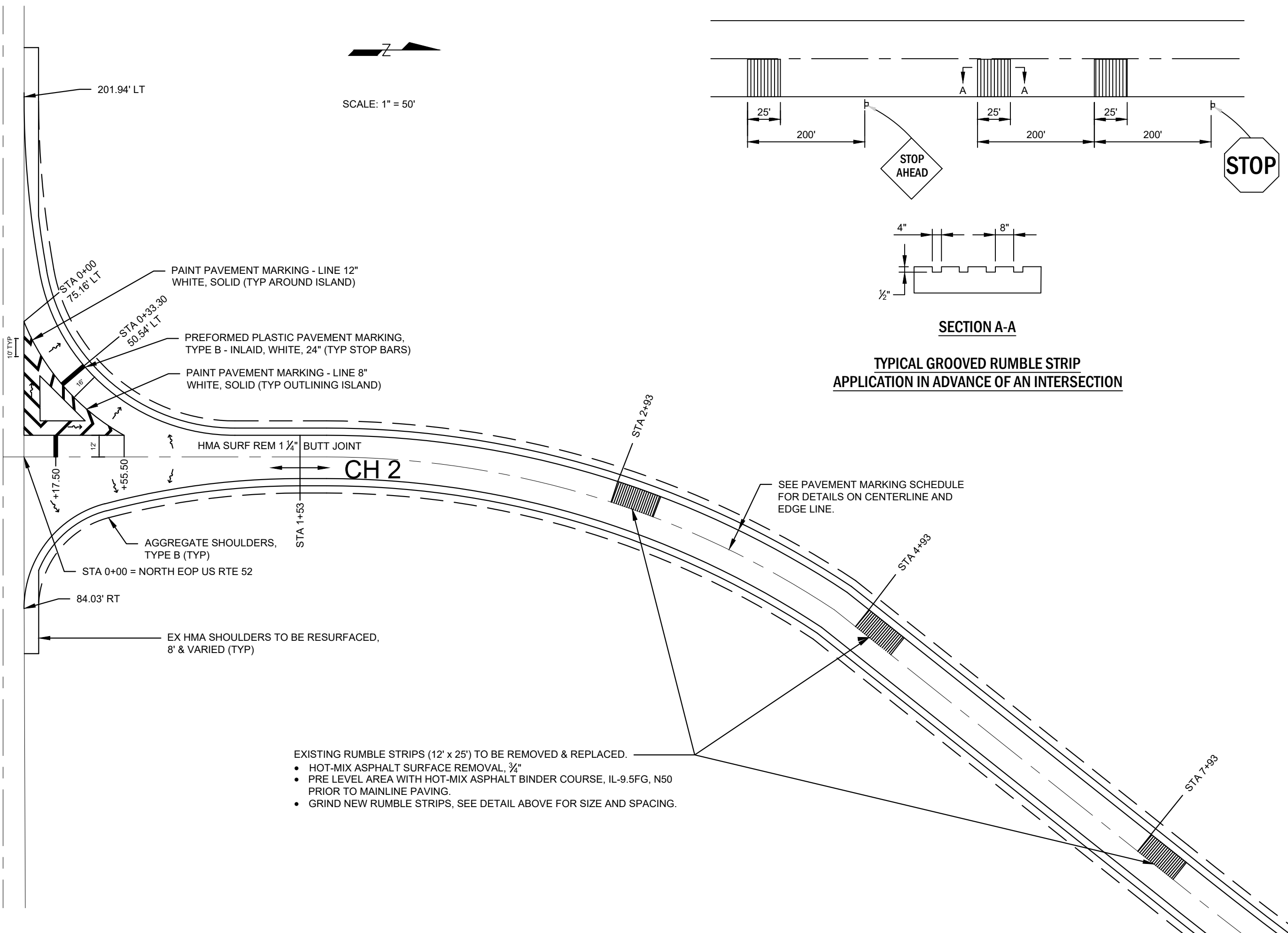


SCALE: 1" = 50'



**SECTION A-A**  
**TYPICAL GROOVED RUMBLE STRIP**  
**APPLICATION IN ADVANCE OF AN INTERSECTION**

US RTE 52



- EXISTING RUMBLE STRIPS (12' x 25') TO BE REMOVED & REPLACED.
- HOT-MIX ASPHALT SURFACE REMOVAL, 3/4"
  - PRE LEVEL AREA WITH HOT-MIX ASPHALT BINDER COURSE, IL-9.5FG, N50 PRIOR TO MAINLINE PAVING.
  - GRIND NEW RUMBLE STRIPS, SEE DETAIL ABOVE FOR SIZE AND SPACING.

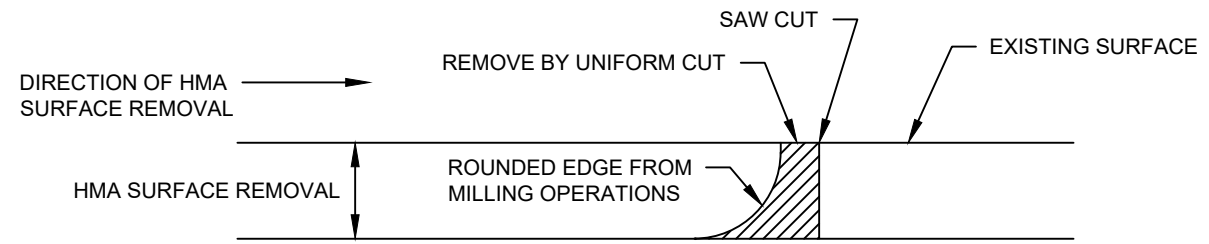
SECTION  
21-00392-01-RS

US RTE 52 INTERSECTION

LASALLE COUNTY  
HIGHWAY DEPARTMENT  
1400 N. 27TH ROAD - P.O. BOX 128 - OTTAWA, ILLINOIS 61350  
PHONE (815) 434-0743 FAX (815) 434-0747

HWY. NO.  
CH 2  
CONTRACT NO.  
87847

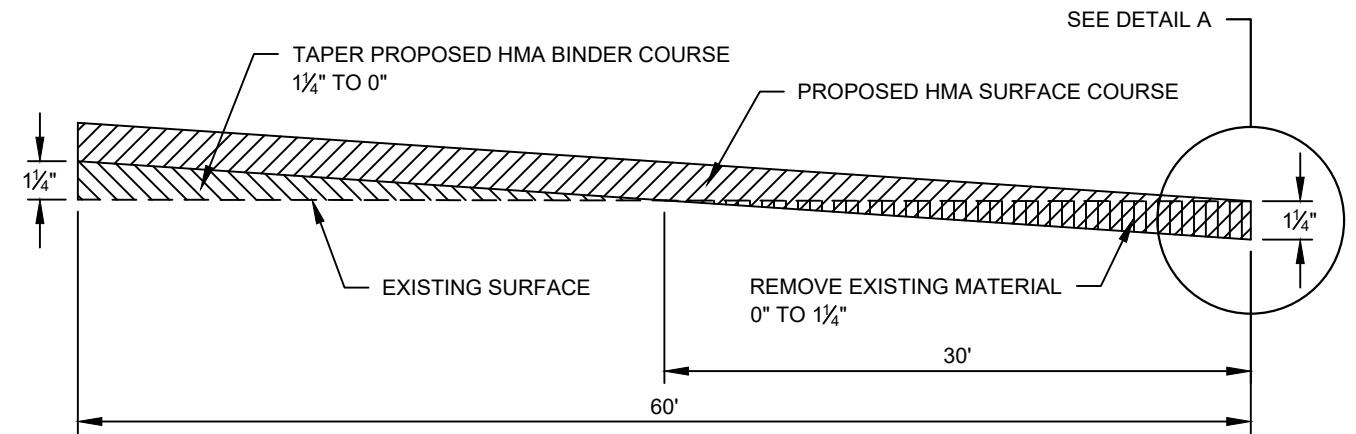
SHEET NO.  
22 of 24



**DETAIL A**

WHEN MILLING OPERATIONS PRODUCE A ROUNDED EDGE, A SAW CUT SHALL BE USED TO MANUFACTURE A PERPENDICULAR EDGE AS SHOWN IN THE DETAIL. THE ENGINEER SHALL BE THE SOLE JUDGE CONCERNING THE USE OF THIS DETAIL. THE COST OF SAW CUTTING AND REMOVAL IS INCLUDED IN THE COST OF THE MILLING OPERATION.

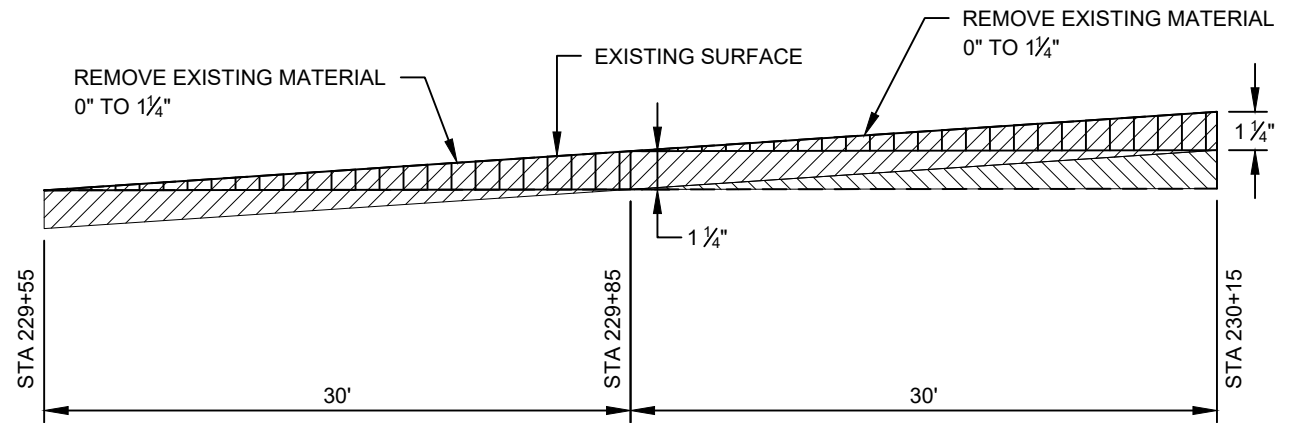
- PREVIOUS BINDER
- PREVIOUS SURFACE
- BUTT JOINT



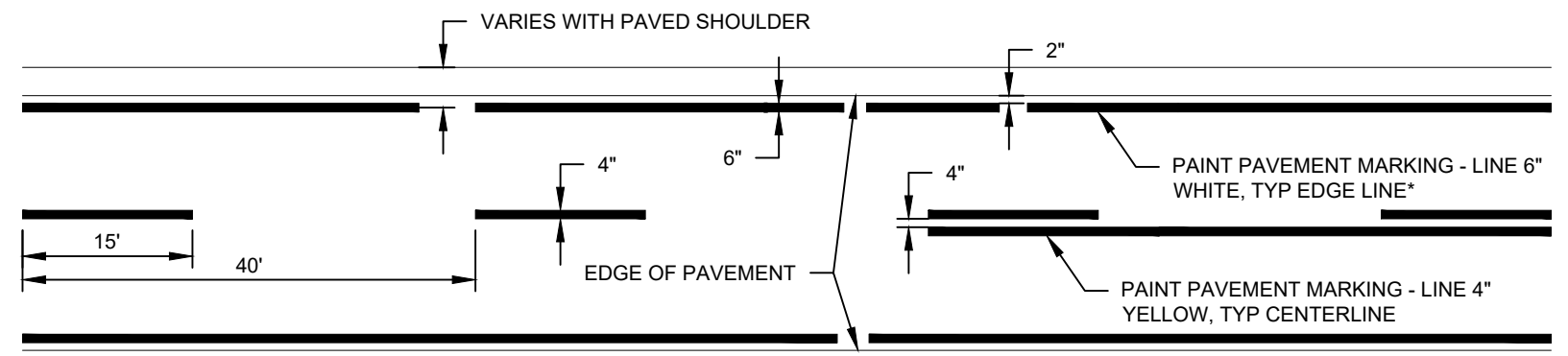
**TYPICAL BUTT JOINT DETAIL**

SEE HOT-MIX ASPHALT SURFACE REMOVAL - BUTT JOINT SCHEDULE FOR LOCATIONS

- BINDER
- SURFACE
- BUTT JOINT



**STA 229+85 & STA 230+15 BUTT JOINT DETAIL**



**PAVEMENT STRIPING DETAIL  
LASALLE COUNTY**

LASALLE COUNTY MAINTAINS A TWO GUN SYSTEM. PAINT OPERATION SHOULD REFLECT LASALLE COUNTY'S SYSTEM

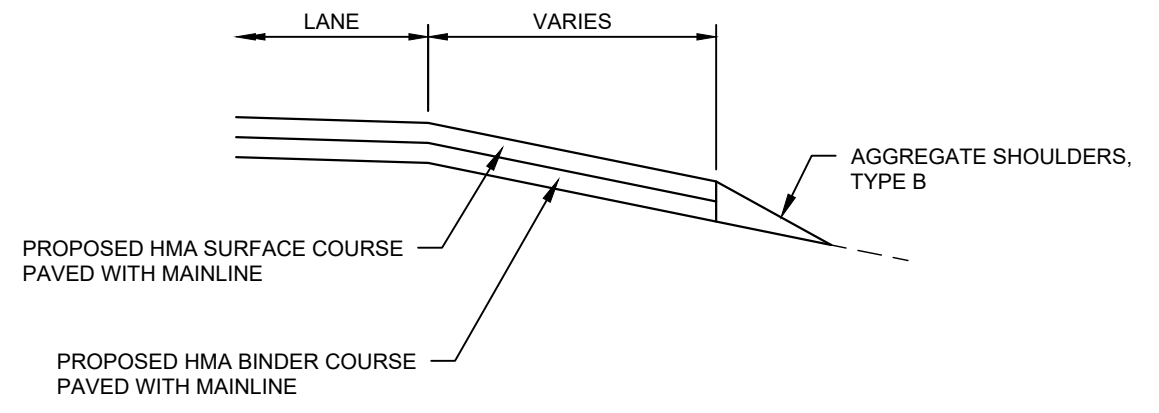
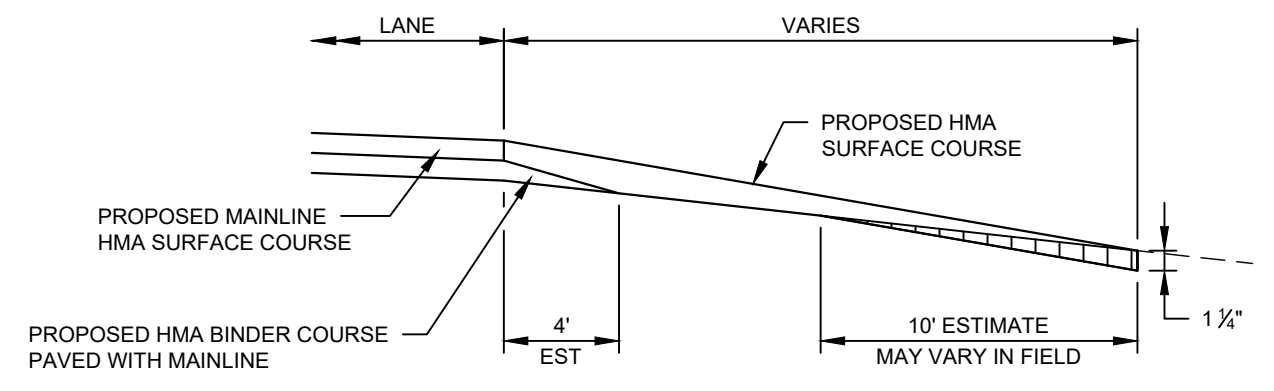
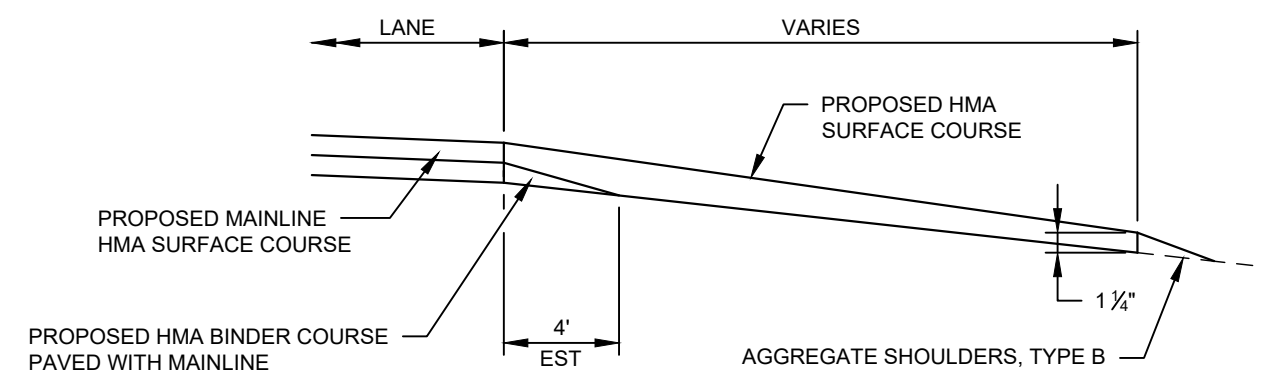
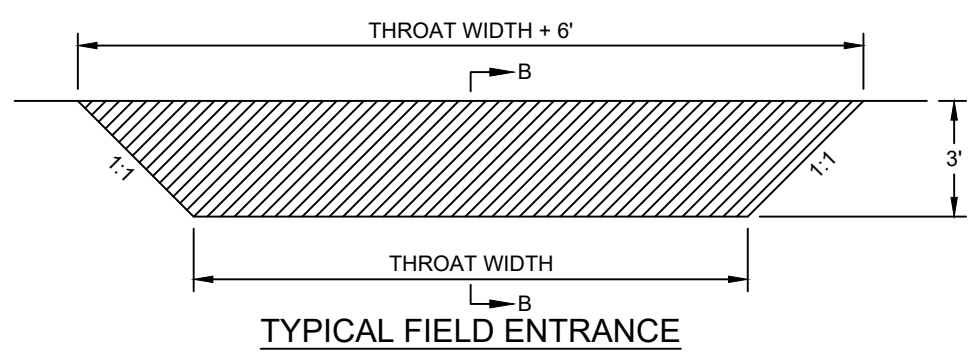
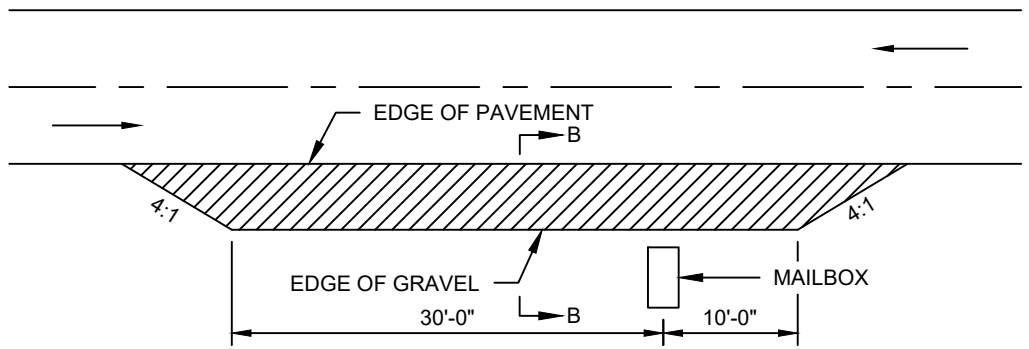
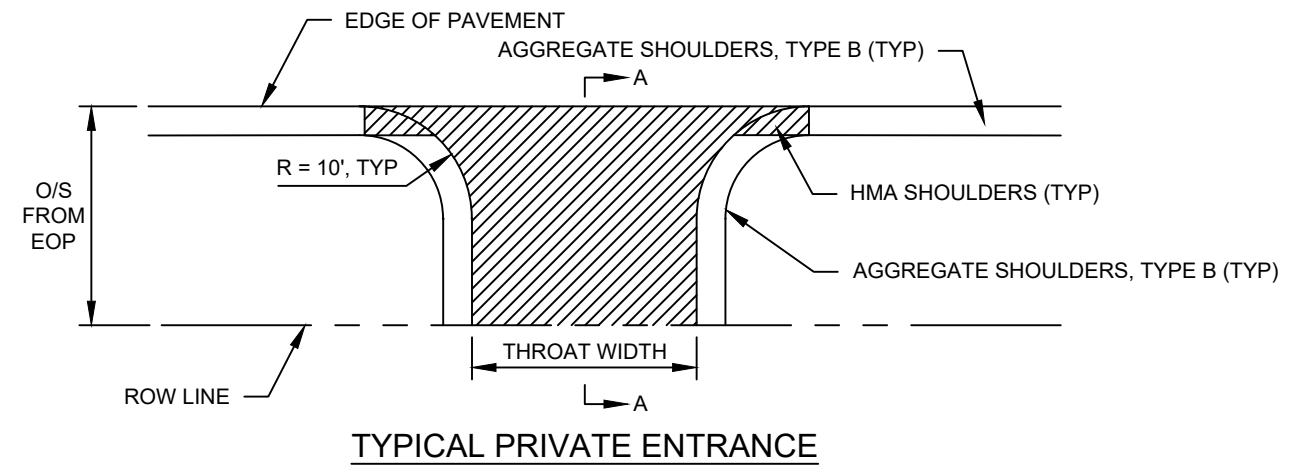
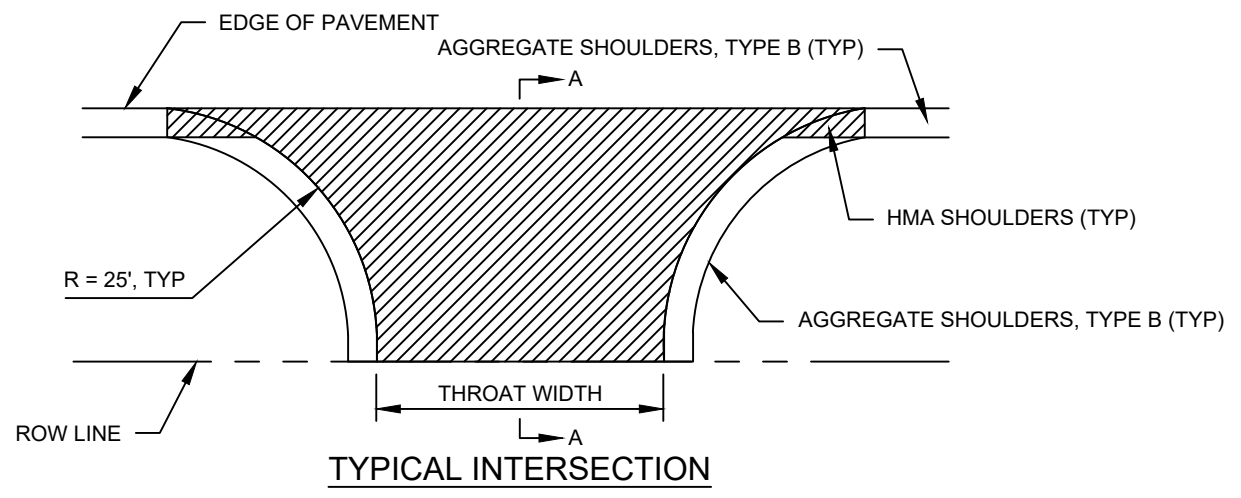
SECTION  
21-00392-01-RS

DETAIL

LASALLE COUNTY  
HIGHWAY DEPARTMENT  
1400 N. 27TH ROAD - P.O. BOX 128 - OTTAWA, ILLINOIS 61350  
PHONE (815) 434-0743 FAX (815) 434-0747  
  
PLEASE DRIVE SAFELY

HWY. NO.  
CH 2  
CONTRACT NO.  
87847

SHEET NO.  
23 of 24



SECTION	21-00392-01-RS
DETAILS	
LASALLE COUNTY HIGHWAY DEPARTMENT 1400 N. 27TH ROAD - P.O. BOX 128 - OTTAWA, ILLINOIS 61350 PHONE (815) 434-0743 FAX (815) 434-0747	
HWY. NO.	CH 2
CONTRACT NO.	87847
SHEET NO.	24 of 24

