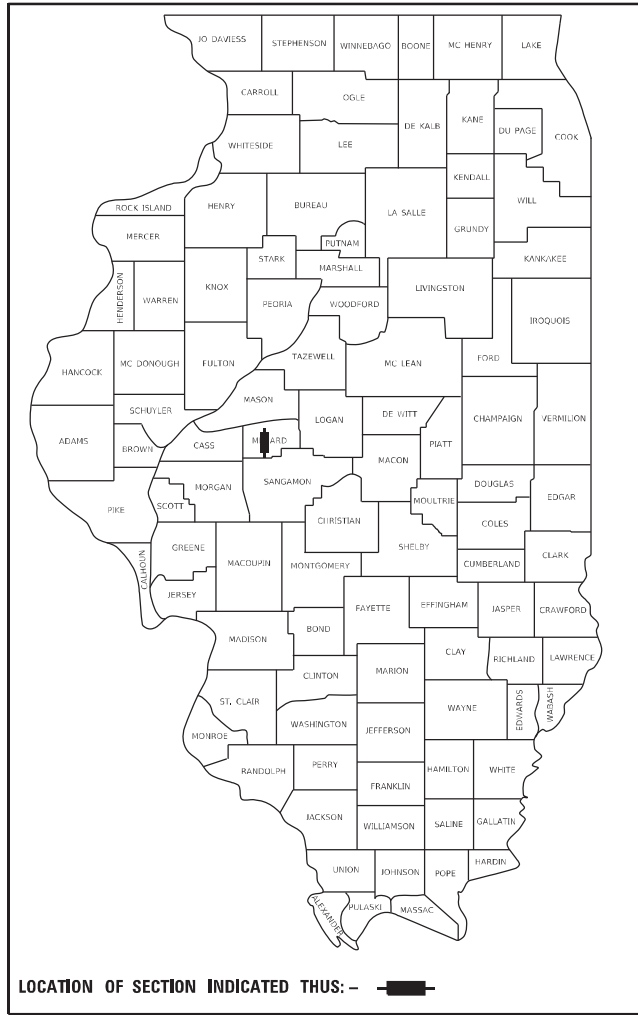


STATE OF ILLINOIS  
DEPARTMENT OF TRANSPORTATION

F.A.P. RTE.	SECTION	COUNTY	TOTAL SHEETS	SHEET NO.
34	101RS-12,CLV,I-1	MENARD	121*	1
		ILLINOIS	CONTRACT NO. 72M79	

\* 121 + 5 = 126 TOTAL SHEETS

D-96-031-21



FOR INDEX OF SHEETS, SEE SHEET NO. 2

# PROPOSED HIGHWAY PLANS

FAP ROUTE 34 IL 97/L 123  
SECTION 101RS-12,CLV,I-1  
PROJECT STP-5M55(054)  
STANDARD OVERLAY & CULVERT IMPROVEMENTS  
MENARD COUNTY



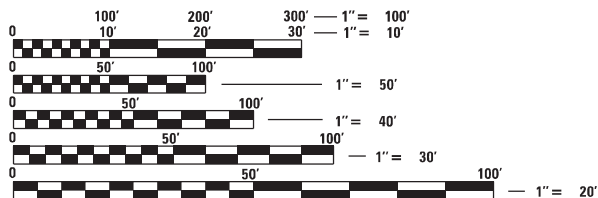
FAP 34 (IL 97/IL 123)  
ADT-4,566 (2019)  
CLASSIFICATION - MINOR ARTERIAL)  
PV= 90.60%  
SV= 7.10%  
MU= 2.30%

C-96-050-21

LIMITS OF PAVING  
IMPROVEMENT STARTS AT  
STA. 433+92  
IL 123

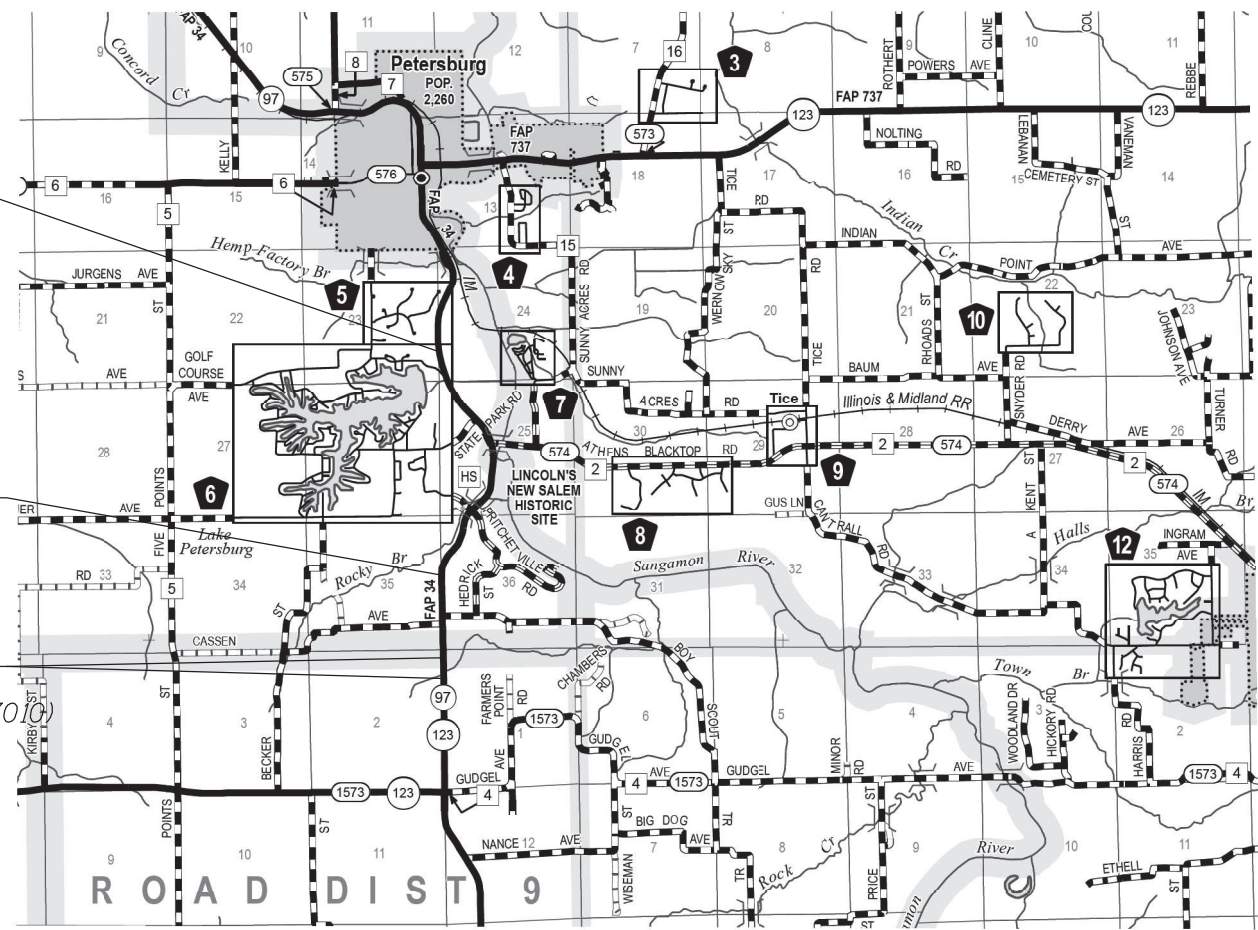
LIMITS OF PAVING  
IMPROVEMENT ENDS AT  
STA. 334+87  
IL 123

CULVERT EXTENSIONS  
STA. 308+55  
STA. 297+87 (SN 065-7010)



FULL SIZE PLANS HAVE BEEN PREPARED USING STANDARD ENGINEERING SCALES, REDUCED SIZED PLANS WILL NOT CONFORM TO STANDARD SCALES. IN MAKING MEASUREMENTS ON REDUCED PLANS, THE ABOVE SCALES MAY BE USED.

J.U.L.I.E.  
JOINT UTILITY LOCATION INFORMATION FOR EXCAVATORS  
1-800-892-0123  
OR 811



PROJECT ENGINEER: JAY EDWARDS (217) 785-0597  
PROJECT MANAGER: JON COX (217) 782-1378

GROSS LENGTH = 9,905 FT. = 1.88 MILE  
NET LENGTH = 9,905 FT. = 1.88 MILE

CONTRACT NO. 72M79

REVISD 4-9-2024

STATE OF ILLINOIS  
DEPARTMENT OF TRANSPORTATION

SUBMITTED August 25, 2023

*Jay P. Myers*  
REGIONAL ENGINEER

December 8, 2023  
*Steph M. Spivey*  
ENGINEER OF DESIGN AND ENVIRONMENT

December 8, 2023  
*Steph M. Spivey*  
DIRECTOR OF HIGHWAYS PROJECT IMPLEMENTATION

PRINTED BY THE AUTHORITY  
OF THE STATE OF ILLINOIS

**GENERAL NOTES**

- ALL ELEVATIONS SHOWN ON THE PLANS ARE BASED ON NAVD88.
- THE CONTRACTOR SHALL NOTIFY THE DISTRICT 6 BUREAU OF OPERATIONS AT (217) 785-5306 THREE WEEKS PRIOR TO IMPLEMENTING ANY TRAFFIC CONTROL.
- THE DISTRICT 6 BUREAU OF OPERATIONS SHALL BE NOTIFIED AT LEAST 14 DAYS PRIOR TO PLACEMENT OF FINAL PAVEMENT MARKINGS AT (PH: 217-785-5306). THE RESIDENT ENGINEER SHALL VERIFY AND DOCUMENT ALL NO PASSING ZONES AND CONTACT THE TRAFFIC OPERATIONS ENGINEER WITH ANY CONCERNS WITHIN THE 14 DAY NOTIFICATION PERIOD SO THEY CAN BE EVALUATED PRIOR TO THE PLACEMENT OF FINAL PAVEMENT MARKING.
- BOX CULVERT DESCRIPTIONS -  
 BOX CULVERT #1: SN 065-7010, STA 297+87.88 7 FT X 6 FT BOX CULVERT, CAST IN PLACE CULVERT EXTENSION AND END SECTION  
 BOX CULVERT #2: STA 300+08 2 FT X 2 FT BOX CULVERT, PRECAST CULVERT EXTENSION AND BOX CULVERT END SECTION #2  
 BOX CULVERT #3: STA 308+55.45 3 FT X 3 FT BOX CULVERT, PRECAST CULVERT EXTENSION AND BOX CULVERT END SECTION #3  
 BOX CULVERT #4: STA 393+42 5 FT X 5 FT BOX CULVERT, CONCRETE STRUCTURE REPAIR AND BOX CULVERT END SECTION #4

**STANDARDS**

000001-08	STANDARD SYMBOLS, ABBREVIATIONS, AND PATTERNS
001001-02	AREAS OF REINFORCEMENT BARS
280001-07	TEMPORARY EROSION CONTROL SYSTEMS
515001-04	NAME PLATE FOR BRIDGES
542301-03	PRECAST REINFORCED CONCRETE END SECTION
602301-04	INLET TYPE A
602306-03	INLET TYPE B
602402-03	PRECAST MANHOLE TYPE A 5' DIAMETER
602406-11	PRECAST MANHOLE TYPE A 6' DIAMETER
604001-05	FRAME AND LIDS TYPE 1
604041-03	FRAME AND LIDS TYPE 9
606101-05	TYPE A GUTTER (INLET, OUTLET & ENTRANCE)
606201-04	TYPE B GUTTER (INLET, OUTLET & ENTRANCE)
630001-13	STEEL PLATE BEAM GUARDRAIL
630301-09	SHOULDER WIDENING FOR TYPE 1 (SPECIAL) GUARDRAIL TERMINALS
642006-01	SHOULDER RUMBLE STRIPS, 8 IN
666001-01	RIGHT OF WAY MARKER
701001-02	OFF ROAD OPERATIONS, 2L, 2W, MORE THAN 15' AWAY
701006-05	OFF ROAD OPERATIONS, 2L, 2W, 15' TO 24" FROM PAVEMENT EDGE
701011-04	OFF ROAD MOVING OPERATIONS, 2L, 2W, DAY ONLY
701201-05	LANE CLOSURE, 2L, 2W, DAY ONLY, FOR SPEEDS 45 MPH OR MORE
701301-04	LANE CLOSURE, 2L, 2W, SHORT TIME OPERATIONS
701306-04	LANE CLOSURE, 2L, 2W, SLOW MOVING OPERATIONS, DAY ONLY, FOR SPEEDS ≥ 45 MPH
701311-03	LANE CLOSURE, 2L, 2W, MOVING OPERATIONS, DAY ONLY
701321-18	LANE CLOSURE, 2L, 2W, BRIDGE REPAIR WITH BARRIER
701326-04	LANE CLOSURE, 2L, 2W, PAVEMENT WIDENING, FOR SPEEDS ≥ 45 MPH
701901-09	TRAFFIC CONTROL DEVICES
704001-08	TEMPORARY CONCRETE BARRIER
725001-01	OBJECT AND TERMINAL MARKERS
780001-05	TYPICAL PAVEMENT MARKINGS
781001-04	TYPICAL APPLICATIONS RAISED REFLECTIVE PAVEMENT MARKERS
782006-01	GUARDRAIL AND BARRIER WALL REFLECTOR MOUNTING DETAIL
001006	DECIMAL OF AN INCH AND OF A FOOT
420001-10	PAVEMENT JOINTS
442201-03	CLASS C AND D PATCHES
602701-02	MANHOLE STEPS
604036-03	GRATE, TYPE 8

THE FOLLOWING MIXTURE REQUIREMENTS ARE APPLICABLE

LOCATIONS:	IL 97	IL 97	IL 97	IL 97	IL 97	IL 97
MIXTURE USE(S):	HMA SURFACE	HMA BINDER, 1.25"	HMA SHOULDERS, 6.5"	HMA SHOULDERS, 1.25"	HMA SHOULDERS, 1.5"	INCIDENTAL HMA
AC/PG:	SBS PG 64-28	PG 64-22	PG 64-22	PG 64-22	PG 64-22	PG 64-22
DESIGN AIR VOIDS:	4.0% @ N DESIGN = 50	4.0% @ N DESIGN = 50	4.0% @ N DESIGN = 50	4.0% @ N DESIGN = 50	4.0% @ N DESIGN = 50	4.0% @ N DESIGN = 50
MIXTURE COMPOSITION (GRADATION MIXTURE)	IL 9.5	IL 9.5 FG	IL 19.0	IL 9.5 FG	IL 9.5	IL 9.5
FRICTION AGGREGATE:	MIX "C"	N/A	N/A	N/A	MIX "C"	MIX "C"
QUALITY MANAGEMENT	QCP	QCP	QC/QA	QC/QA	QC/QA	QC/QA
SUBLOT SIZE:	1,000 TONS	1,000 TONS	N/A	N/A	N/A	N/A
MTD:	YES	NO	NO	NO	NO	NO

- NOTE:
- QCP APPLIES TO MAINLINE ONLY.
  - NUCLEAR GAUGES WILL BE USED FOR DENSITY VERIFICATION BY THE ENGINEER ON ALL QC/QA ITEMS.

**INDEX OF SHEETS**

1	COVER SHEET
2	INDEX OF SHEETS, LISTS OF STANDARDS, GENERAL NOTES AND COMMITMENTS
3-6	SUMMARY OF QUANTITIES (4)
7-11	SCHEDULE OF QUANTITIES (5)
12-20	TYPICAL SECTIONS (9)
21-22	HORIZONTAL & VERTICAL CONTROL (2)
23	SN 065-7010 EXTENSION PLAN
24-25	3X3 BOX CULVERT EXTENSION PLAN
26-30	PLAN SHEETS (5)
31-35	STORM WATER POLLUTION AND PROTECTION PLAN (5)
* 36-39	DRAINAGE SHEETS & PROFILE SHEETS (4) * 39A-3E TREE REMOVAL SHEETS
40-41	MAX WIDTH SIGNS DETAIL SHEET (2)
42-44	STAGING DETAIL SHEETS (3)
45-48	PAVEMENT MARKING DETAIL SHEETS (4)
49	BOX CULVERT LOCATION SHEET
50-55	SN 065-7010 DETAIL SHEETS (6)
56-59	STA 393+41.63 CULVERT DETAIL (4)
60	CONCRETE COLLAR DETAIL
61-62	DETAIL SHEETS (2)
63-121	CROSS SECTIONS (59)

**RATE TABLE**

THE FOLLOWING RATES OF APPLICATION HAVE BEEN ASSUMED IN CALCULATING PLAN QUANTITIES.

HMA SURFACE/BINDER	.056 TONS/(SQYD*IN)
BITUMINOUS MATERIALS (TACK COAT):	0.025 LBS/SQ FT (HMA LIFTS)
BITUMINOUS MATERIALS (TACK COAT):	0.05 LBS/SQ FT (MILLED SURFACE)
AGGREGATE WEDGE SHOULDERS TYPE B	1.6 TONS/CUYD
AGGREGATE BASE COURSE TYPE B	1.6 TONS/CUYD
STONE DUMPED RIPRAP	1.5 TONS/CUYD
NITROGEN FERTILIZER NUTRIENT	90 LB/ACRE
PHOSPHOROUS FERTILIZER NUTRIENT	90 LB/ACRE
POTASSIUM FERTILIZER NUTRIENT	90 LB/ACRE
AGRICULTURE GROUND LIMESTONE	2 TONS/ACRE

**COMMITMENTS**

TREES THREE (3) INCHES IN DIAMETER OR GREATER IN DIAMETER AT BREAST HEIGHT SHALL NOT BE CLEARED BETWEEN APRIL 1 THROUGH SEPTEMBER 30 OF A GIVEN YEAR.

**STATE OF ILLINOIS  
DEPARTMENT OF TRANSPORTATION  
DIVISION OF HIGHWAYS  
DISTRICT 6**

EXAMINED July, 31 20 23

*[Signature]*  
ENGINEER OF OPERATIONS

EXAMINED August, 7 20 23

*[Signature]*  
ENGINEER OF PROJECT IMPLEMENTATION

EXAMINED August, 7 20 23

*[Signature]*  
ENGINEER OF PROGRAM DEVELOPMENT

REVISD 4-9-2024

REV. - MS

MODEL: D:\default... FILE NAME: p:\illinois\paw\benley.com\pwwd\Documents\DOT\_offices\District\_6\Projects\067279\CADD\DATA\CADD\sheet\067279-shi-senote.dgn

USER NAME = Jonathan.Cox	DESIGNED -	REVISED -
PLOT SCALE = 100.0000' / in.	DRAWN -	REVISED -
PLOT DATE = 8/18/2023	CHECKED -	REVISED -
	DATE -	REVISED -

**STATE OF ILLINOIS  
DEPARTMENT OF TRANSPORTATION**

**HIGHWAY STANDARDS & INDEX OF SHEETS**

SCALE: SHEET 1 OF 2 SHEETS STA. TO STA.

F.A.P. RTE.	SECTION	COUNTY	TOTAL SHEETS	SHEET NO.
34	101RS-12.CLV-I-1	MENARD	121	2
CONTRACT NO. 72M79			ILLINOIS FED. AID PROJECT	

MODEL: Default  
 FILE NAME: p:\illinois\benley.com\p\DOT\Documents\DOT\_Offices\District\_8\Projects\067279\CADD\Drawings\067279-94-500.dgn

CODE NO.	ITEM	UNIT	TOTAL QUANTITY	CONSTRUCTION CODE	
				80% FED 20% STATE	80% FED 20% STATE
				ROADWAY 0005	BOX CULVERT 0004
				RURAL	SN 065-7010
54213681	PRECAST REINFORCED CONCRETE FLARED END SECTIONS 36"	EACH	4	4	
54248510	CONCRETE COLLAR	CU YD	1.2	1.2	
550A0380	STORM SEWERS, CLASS A, TYPE 2 18"	FOOT	800	800	
550A0410	STORM SEWERS, CLASS A, TYPE 2 24"	FOOT	130	130	
550A0450	STORM SEWERS, CLASS A, TYPE 2 36"	FOOT	369	369	
550A4800	STORM SEWERS, CLASS A, TYPE 2 EQUIVALENT ROUND-SIZE 18"	FOOT	200	200	
59100100	GEOCOMPOSITE WALL DRAIN	SQ YD	69	38	31
60221100	MANHOLES, TYPE A, 5'-DIAMETER, TYPE 1 FRAME, CLOSED LID	EACH	4	4	
60223800	MANHOLES, TYPE A, 6'-DIAMETER, TYPE 1 FRAME, CLOSED LID	EACH	1	1	
60235610	INLETS, TYPE A, TYPE 2 FRAME AND GRATE	EACH	2	2	
60240301	INLETS, TYPE B, TYPE 8 GRATE	EACH	1	1	
60240303	INLETS, TYPE B, TYPE 9 FRAME AND GRATE	EACH	5	5	
60500060	REMOVING INLETS	EACH	3	3	
60600095	CLASS SI CONCRETE (OUTLET)	CU YD	13	13	
60602500	CONCRETE GUTTER, TYPE A	FOOT	888	888	

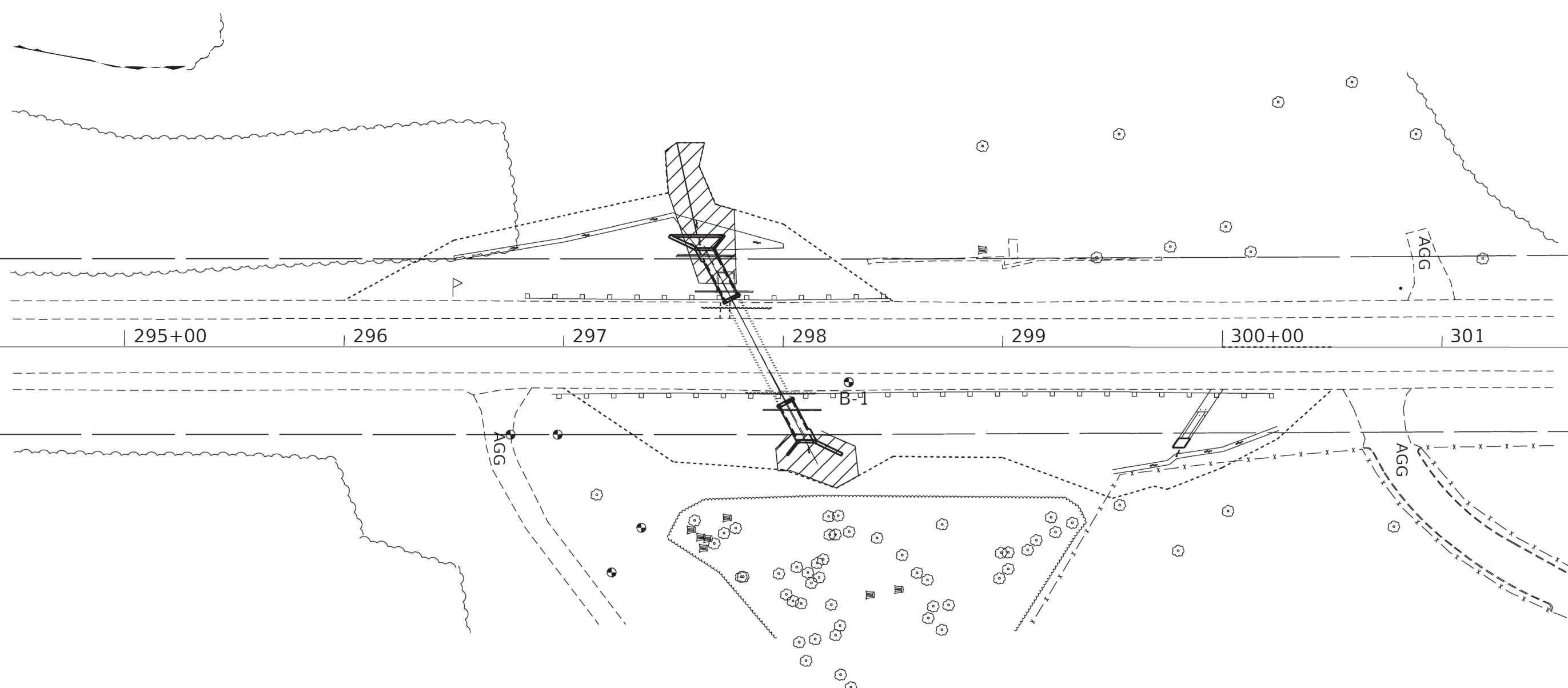
CODE NO.	ITEM	UNIT	TOTAL QUANTITY	CONSTRUCTION CODE	
				80% FED 20% STATE	80% FED 20% STATE
				ROADWAY 0005	BOX CULVERT 0004
				RURAL	SN 065-7010
60602800	CONCRETE GUTTER, TYPE B	FOOT	2869	2869	
* 63000001	STEEL PLATE BEAM GUARDRAIL, TYPE A, 6 FOOT POSTS	FOOT	1225	1225	
* 63000003	STEEL PLATE BEAM GUARDRAIL, TYPE A, 9 FOOT POSTS	FOOT	1300	1300	
* 63100167	TRAFFIC BARRIER TERMINAL, TYPE 1 (SPECIAL) TANGENT	EACH	12	12	
63200310	GUARDRAIL REMOVAL	FOOT	3749	3253	496
64200108	SHOULDER RUMBLE STRIPS, 8 INCH	FOOT	6701	6701	
66600105	FURNISHING AND ERECTING RIGHT OF WAY MARKERS	EACH	16	8	8
67000400	ENGINEER'S FIELD OFFICE, TYPE A	CAL MO	12	11	1
67100100	MOBILIZATION	L SUM	1	0.9	0.1
70100405	TRAFFIC CONTROL AND PROTECTION, STANDARD 701321	EACH	1		1
70100450	TRAFFIC CONTROL AND PROTECTION, STANDARD 701201	L SUM	1	0.9	0.1
70100460	TRAFFIC CONTROL AND PROTECTION, STANDARD 701306	L SUM	1	1	
70100500	TRAFFIC CONTROL AND PROTECTION, STANDARD 701326	L SUM	1	1	
70106500	TEMPORARY BRIDGE TRAFFIC SIGNALS	EACH	1	1	
70106700	TEMPORARY RUMBLE STRIPS	EACH	6	6	
70107025	CHANGEABLE MESSAGE SIGN	CAL DA	120	120	

\* SPECIALTY ITEM

△ REVISED 4-9-2024

REV. - MS

USER NAME = Jonathan.Cox DESIGNED - DRAWN - PLOT SCALE = 100.0000' / in. CHECKED - PLOT DATE = 8/18/2023 DATE -	REVISED - REVISED - REVISED - REVISED -	<b>STATE OF ILLINOIS DEPARTMENT OF TRANSPORTATION</b>	<b>SUMMARY OF QUANTITIES</b>	F.A.P. RTE. 34 SECTION 101RS-12.CLV.I-1 COUNTY MENARD TOTAL SHEETS 121 SHEET NO. 5 CONTRACT NO. 72M79 ILLINOIS FED. AID PROJECT
SCALE: SHEET 3 OF 4 SHEETS STA. TO STA.				



 TREE REMOVAL

MODEL: Default  
FILE NAME: p:\wildcat\aw\_bentley.com\PWIDOT\Documents\DOT\_Offices\District\_6\Projects\0672\79\CAD\data\CADsheets\0672\79-shr-treem.dgn

USER NAME = andrew.cisler	DESIGNED -	REVISED -
	DRAWN -	REVISED -
PLOT SCALE = 100.0000' / in.	CHECKED -	REVISED -
PLOT DATE = 3/28/2024	DATE -	REVISED -

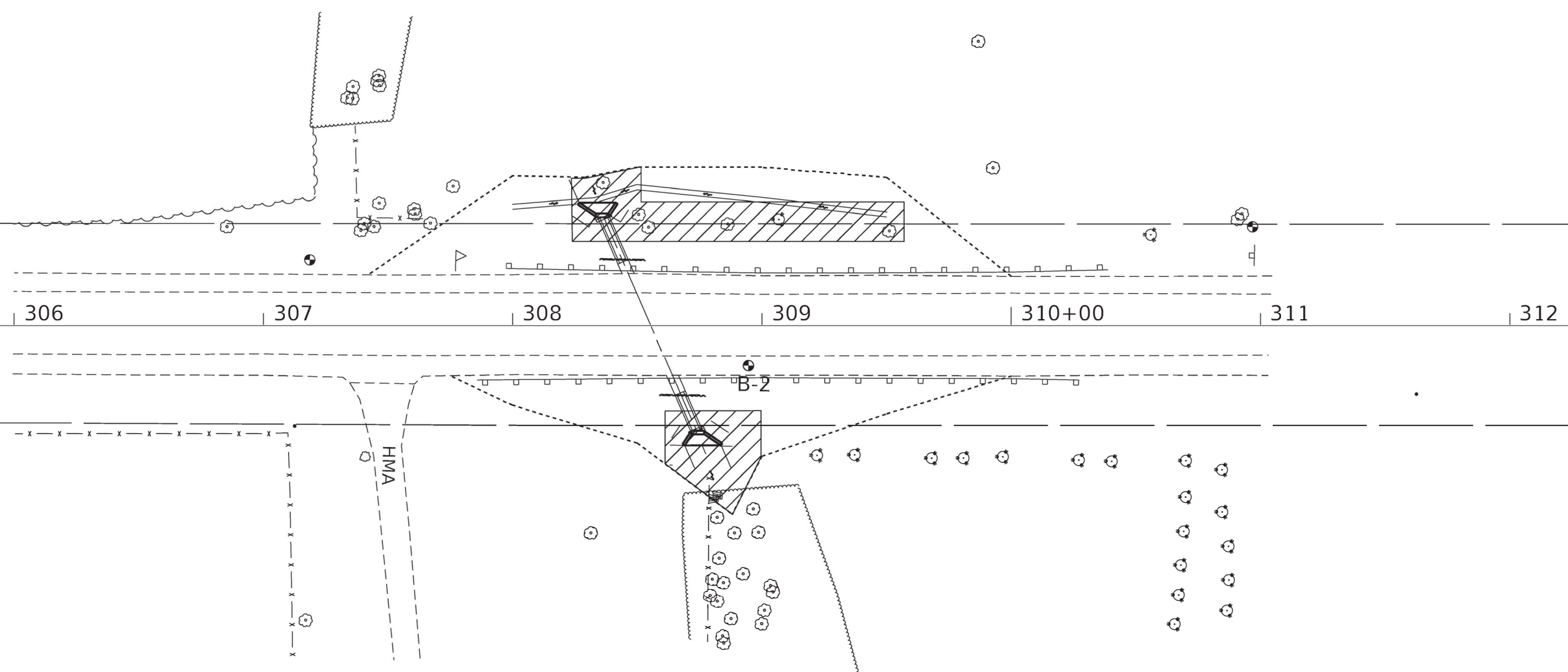
**STATE OF ILLINOIS  
DEPARTMENT OF TRANSPORTATION**

**TREE REMOVAL  
PLAN SHEETS**

SCALE: SHEET 1 OF 5 SHEETS STA. TO STA.

F.A.P. RTE.	SECTION	COUNTY	TOTAL SHEETS	SHEET NO.
34	101RS-12,CLV,I-1	MENARD	121	39A
CONTRACT NO. 72M79				
ILLINOIS FED. AID PROJECT				

**1** REV 3-28-2024



 TREE REMOVAL

MODEL: Default  
 FILE NAME: p:\11\dot-cw-bentley.com\p\11\DOT\Documents\DOT Offices\District 6\Projects\0672\79\CAD\Drawings\0672\79-shr-tree-rem.dgn

USER NAME = andrew.cisler	DESIGNED -	REVISED -
	DRAWN -	REVISED -
PLOT SCALE = 100.0000' / in.	CHECKED -	REVISED -
PLOT DATE = 3/28/2024	DATE -	REVISED -

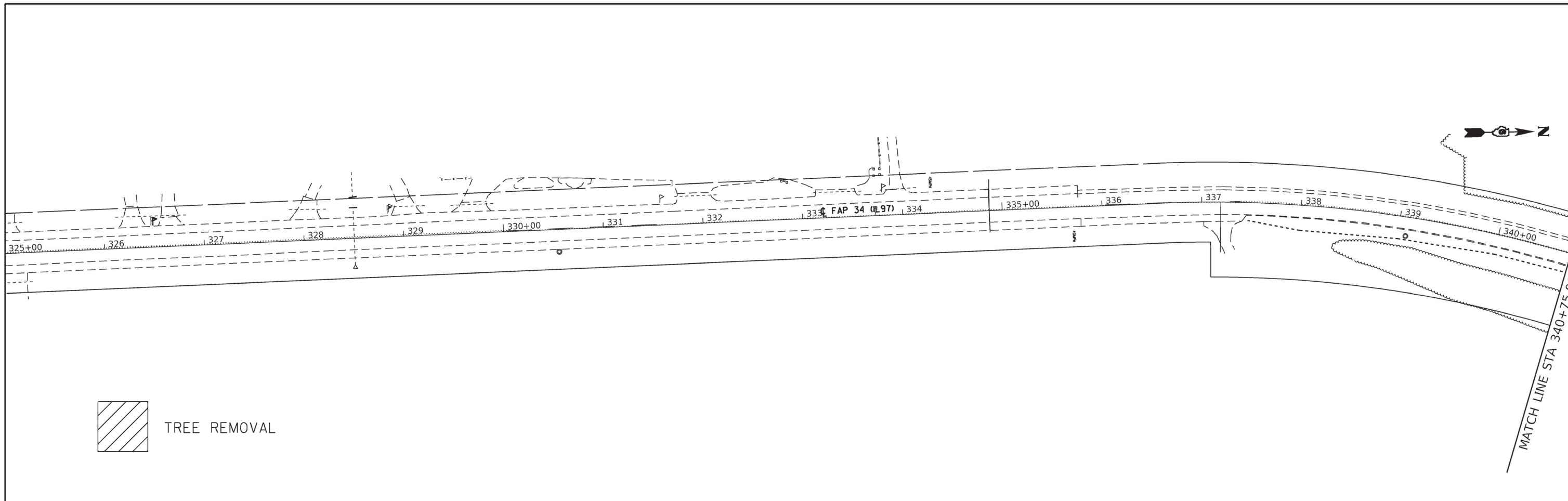
**STATE OF ILLINOIS**  
**DEPARTMENT OF TRANSPORTATION**

**TREE REMOVAL**  
**PLAN SHEETS**

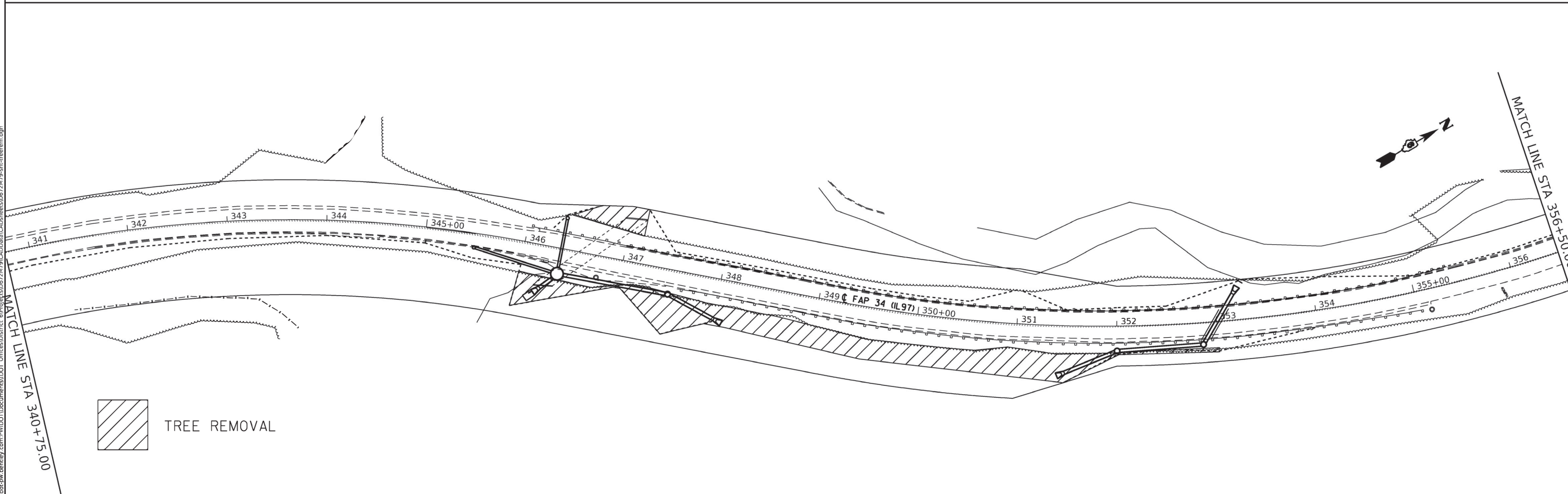
SCALE: SHEET 2 OF 5 SHEETS STA. TO STA.

F.A.P. RTE.	SECTION	COUNTY	TOTAL SHEETS	SHEET NO.
34	101RS-12,CLV,I-1	MENARD	121	39B
			CONTRACT NO. 72M79	
ILLINOIS FED. AID PROJECT				

1 REV 3-28-2024



 TREE REMOVAL



 TREE REMOVAL

MODEL: Dwg.dwg  
FILE NAME: p:\110101\dot\Documents\DOT Offices\District 6\Projects\0672M79\CAD\data\CAD\sheet\0672M79-shr-treerem.dwg

USER NAME = andrew.cisler	DESIGNED -	REVISED -
	DRAWN -	REVISED -
PLOT SCALE = 100.0000' / in.	CHECKED -	REVISED -
PLOT DATE = 3/28/2024	DATE -	REVISED -

**STATE OF ILLINOIS  
DEPARTMENT OF TRANSPORTATION**

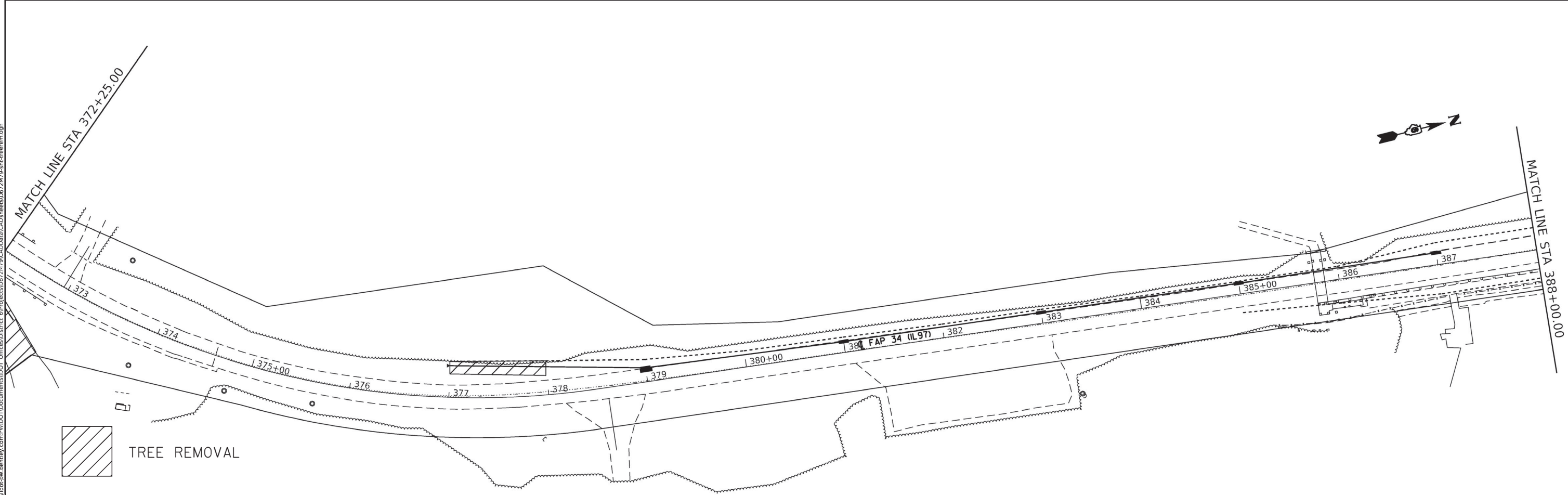
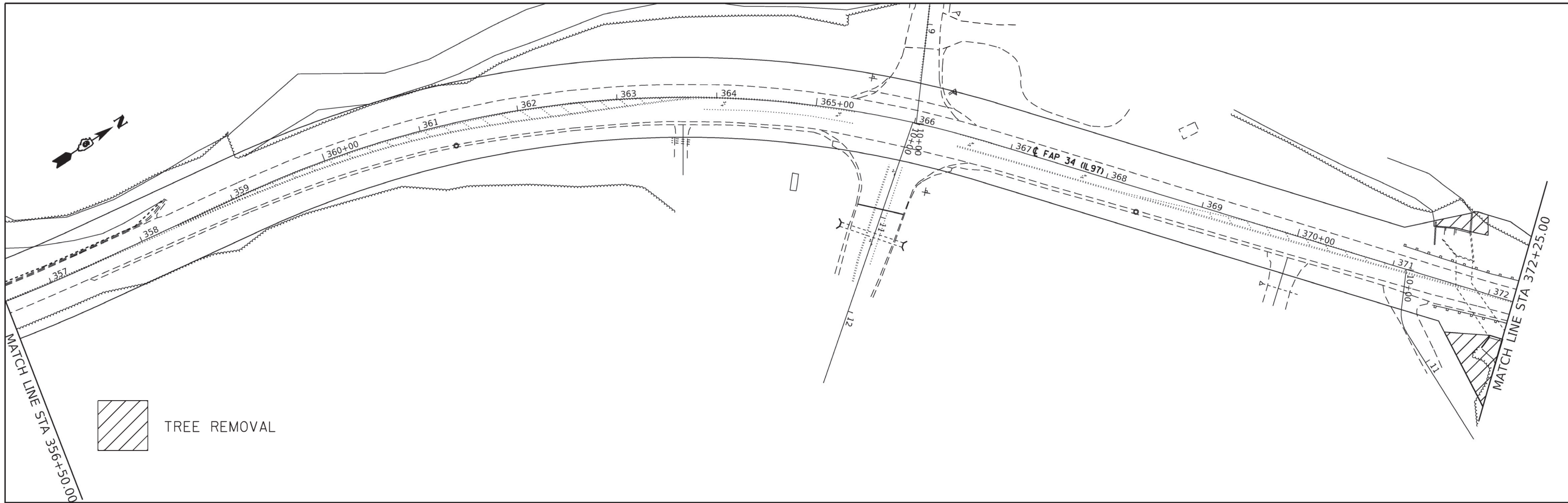
**TREE REMOVAL  
PLAN SHEETS**

SCALE: SHEET 3 OF 5 SHEETS STA. 1 TO STA.

F.A.P. RTE.	SECTION	COUNTY	TOTAL SHEETS	SHEET NO.
34	101RS-12,CLV,I-1	MENARD	121	39C
CONTRACT NO. 72M79				

**1** REV 3-28-2024

ILLINOIS FED. AID PROJECT



MODEL: D:\default  
 FILE NAME: p:\w\10102024\benctley.com\p\10102024\Documents\DOT\_Offices\District\_6\Projects\06727M79\CAD\Drawings\CAD\Sheet\06727M79-shr-treerem.dgn

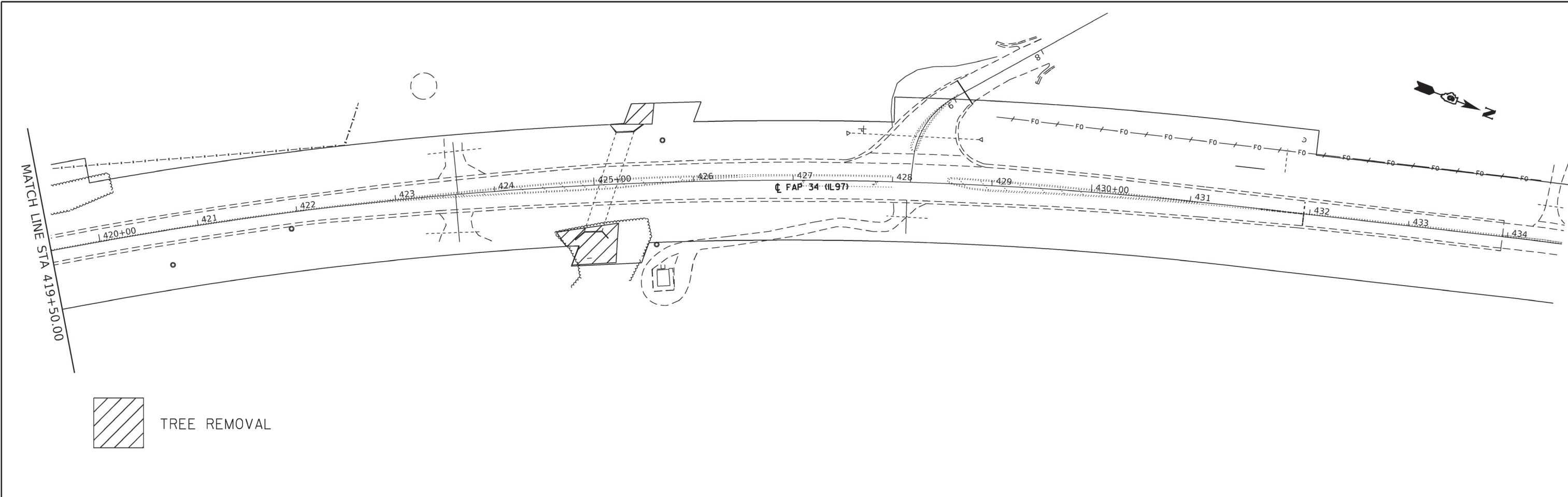
USER NAME = andrew.cisler	DESIGNED -	REVISED -
DRAWN -	REVISED -	
PLOT SCALE = 100.0000' / in.	CHECKED -	REVISED -
PLOT DATE = 3/28/2024	DATE -	REVISED -

**STATE OF ILLINOIS  
DEPARTMENT OF TRANSPORTATION**

**TREE REMOVAL  
PLAN SHEETS**

SCALE: SHEET 4 OF 5 SHEETS STA. TO STA.

F.A.P. RTE.	SECTION	COUNTY	TOTAL SHEETS	SHEET NO.
34	101RS-12.CL.V.I-1	MENARD	121	39D
CONTRACT NO. 72M79				
ILLINOIS FE.D AID PROJECT				



 TREE REMOVAL

MODEL: Default  
 FILE NAME: p:\w\dot\paw\_bentley.com\p\dot\Documents\DOT Offices\District 6\Projects\0672M79\CAD\Drawings\0672M79-shc-treerem.dgn

USER NAME = andrew.cider	DESIGNED -	REVISED -
	DRAWN -	REVISED -
PLOT SCALE = 100.0000' / in.	CHECKED -	REVISED -
PLOT DATE = 3/28/2024	DATE -	REVISED -

**STATE OF ILLINOIS**  
**DEPARTMENT OF TRANSPORTATION**

**TREE REMOVAL**  
**PLAN SHEETS**

SCALE: \_\_\_\_\_ SHEET 5 OF 5 SHEETS, STA. \_\_\_\_\_ TO STA. \_\_\_\_\_

F.A.P. RTE.	SECTION	COUNTY	TOTAL SHEETS	SHEET NO.
34	101R5-12,CLV.I-1	MENARD	121	39E
CONTRACT NO. 72M79				
ILLINOIS FED. AID PROJECT				