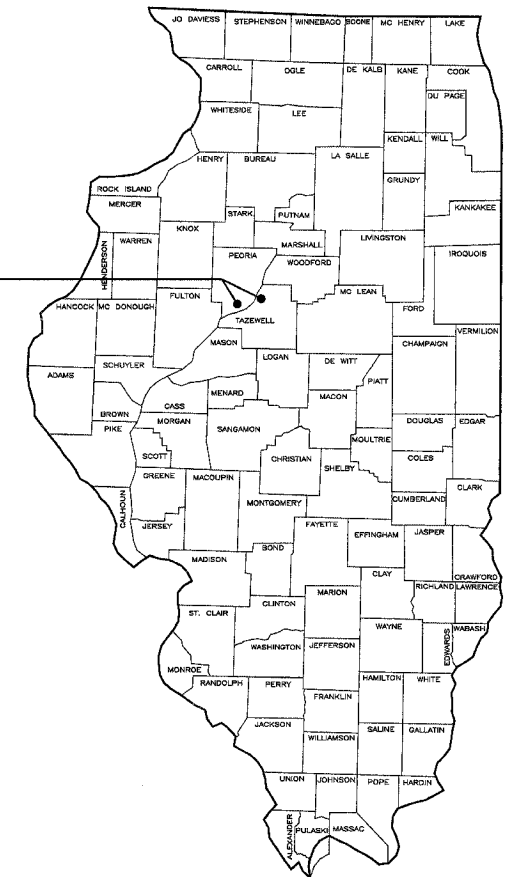


**State of Illinois**  
**Department of Natural Resources**  
**Office of Mines and Minerals**  
**Division of Abandoned Mined Lands**

Funded by the  
United States Department of Interior  
Federal Office of Surface Mining

**Reed City Park Group**  
**Reclamation Project**  
**AML-GPoE-0603**  
**Peoria and Tazewell Counties**  
**1 LR**

Reed City Park Group  
Peoria and Tazewell Counties



*PRE-BID MEETING*  
*A PRE-BID MEETING IS SCHEDULED FOR THIS PROJECT AT 9:00 A.M.*  
*FRIDAY, APRIL 13, 2007 AT THE REED CITY PARK SITE.*

**SCHEDULE OF DRAWINGS:**

1. Cover Sheet
  2. Summary of Quantities/General Notes/Location Map
  3. Existing & Proposed Conditions - Manhattan Coal Co.
  4. Existing & Proposed Conditions - Mapleton Mine Opening
  5. Existing & Proposed Conditions - Gary Coal Co.
  6. Existing & Proposed Conditions - Reed City Park
  - 7-11. Cross Sections - Reed City Park
  - 12-13. Details
- IDOT Standard 630001-07 Steel Plate Beam Guardrail  
IDOT Standard 631011-03 Traffic Barrier Terminal Type 2  
IDOT Standard 542401 Metal End Section for Pipe Culverts

Prepared By IDNR Staff

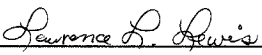
Approved for Bidding:

  
Joseph R. Angleton, Director  
Office of Mines and Minerals

Approved By:

  
Alfred L. Clayborne, Manager  
AML Division

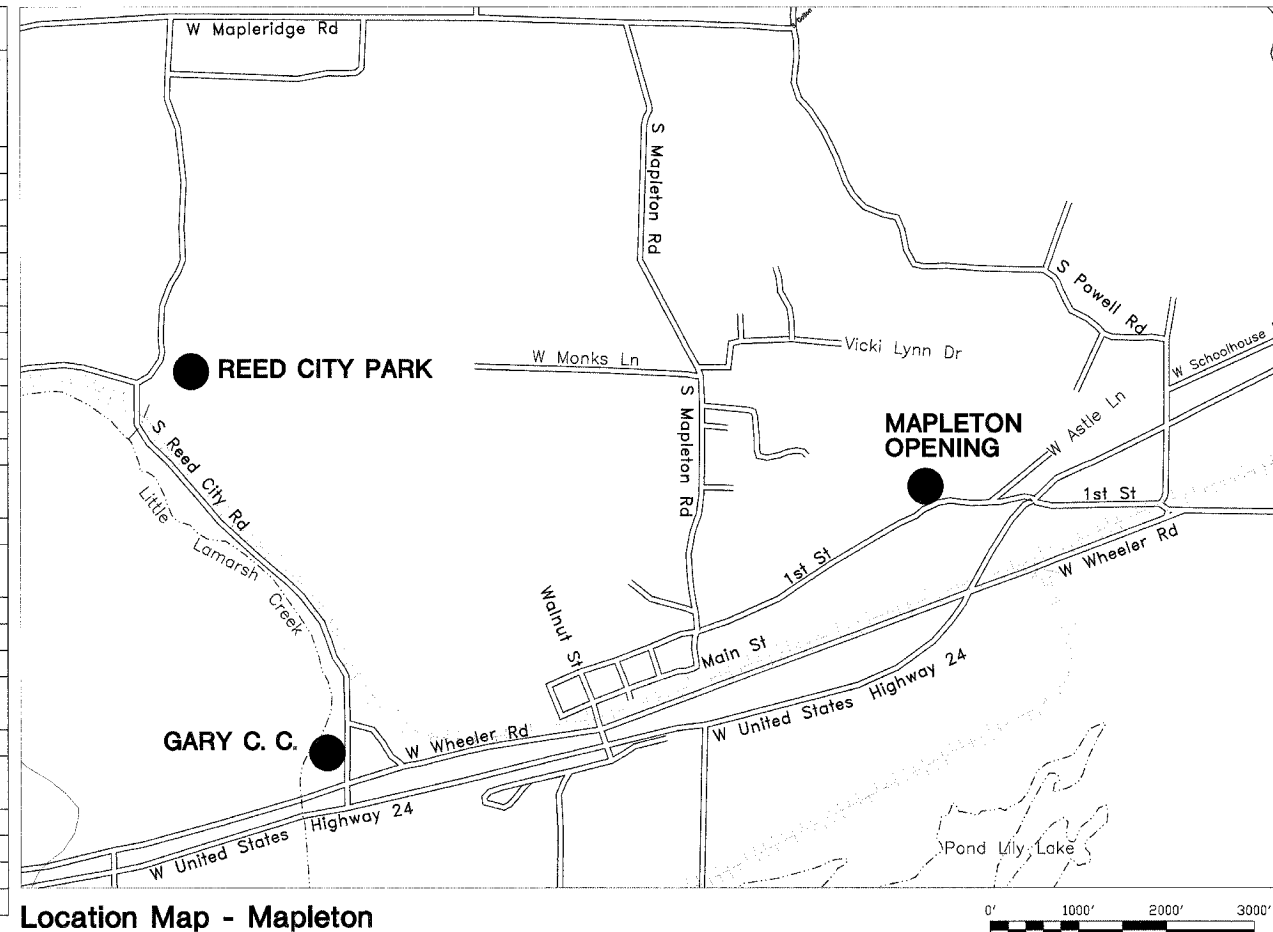
Approved By:

  
Lawrence L. Lewis, P.E.  
IL Licensed Professional Engineer  
No. 0062-038880



Summary of Quantities

#	Item	Section	Quantities					Unit	Rates/Remarks
			Manhattan Mine	Mapleton Opening	Gary Coal Co.	Reed City	Totals		
1	Special Clearing	201	0.25	0.25	0.25	0.25	1	L.S.	
2	Earth Excavation	202	-	-	-	4,637	4,637	C.Y.	
3	Special Excavation	214	153	346	273	-	772	C.Y.	
4	Riprap Fill C-3	216	73	73	-	-	146	Ton	
5	CA-1 Fill	216	64	144	115	-	323	Ton	
6	CA-6 Fill	216	114	377	302	-	793	Ton	
7	Seeding	250	2.6	0.3	1.0	2.1	6	Acre	
8	Nitrogen Fertilizer Nutrient	250	312	36	120	252	720	Pound	120 Pounds/Acre
9	Phosphorous Fertilizer Nutrient	250	390	45	150	315	900	Pound	150 Pounds/Acre
10	Potassium Fertilizer Nutrient	250	650	75	250	525	1,500	Pound	250 Pounds/Acre
11	Agricultural Ground Limestone	250	5.2	0.6	2.0	4.2	12	Ton	2 Tons/Acre
12	Mulch, Method 2, Procedure 1	IDOT 251	2.6	0.3	1.0	2.1	6	Acre	2 Tons/Acre
13	Aggregate Surface Course, Type B, CA-6	IDOT 402	-	-	-	261	261	Ton	
14	Bituminous Materials (Prime Coat)	IDOT 403	-	-	-	210	210	Gallon	
15	Bituminous Materials (Cover and Seal Coats)	IDOT 403	-	-	-	630	630	Gallon	
16	Cover Coat Aggregate	IDOT 403	-	-	-	30	30	Ton	
17	Seal Coat Aggregate	IDOT 403	-	-	-	15	15	Ton	
18	Removal of Existing Structures	501	0.9	0.1	-	-	1	L.S.	
19	Pipe Culvert 15" Corrugated Steel Pipe, Type 1	IDOT 542	35	-	-	-	35	Foot	
20	Steel End Sections 15" Dia.	IDOT 542	2	-	-	-	2	Each	
21	Pipe Culvert 12" Corrugated Polyethylene (PE) with Smooth Interior	IDOT 542	-	-	-	133	133	Foot	
22	Steel Plate Beam Guard Rail, Type A	IDOT 630	-	-	-	220	220	Foot	
23	Traffic Barrier Terminals, Type 2	IDOT 631	-	-	-	4	4	Each	
24	Mine Opening Marker	666	2	1	1	-	4	Each	
25	Mobilization (Max. 6% of Bid)	671	0.25	0.25	0.25	0.25	1	L.S.	



Location Map - Mapleton

GENERAL NOTES

Unless otherwise noted on the plans, all disturbed areas within the construction limits will be amended with agricultural ground limestone, fertilizer nutrients, seeded and mulched at the required rates specified in the plans.

The contractor is responsible for visiting the site and familiarizing himself with the existing conditions and the proposed reclamation work prior to submitting a bid.

The contractor shall provide and pay for all field engineering services to execute the project as specified in the Field Engineering section of the Special Provisions.

The contractor is responsible for locating and protecting all existing utility lines pertaining to the work.

Unless noted on the plans, all onsite access roads may be used for construction and must be maintained during construction and restored to original or better condition at the completion of work by the contractor. Access roads to the site as designated in the plans are to be maintained to the satisfaction of the engineer.

The construction limits will be staked by the contractor prior to construction. The contractor is responsible for the repair and or restitution at his own expense for all damages done to any area outside the construction limits.

Application rates specified in the plans are shown in the Summary of Quantities-Rates/Remarks column.

CONSTRUCTION NOTES

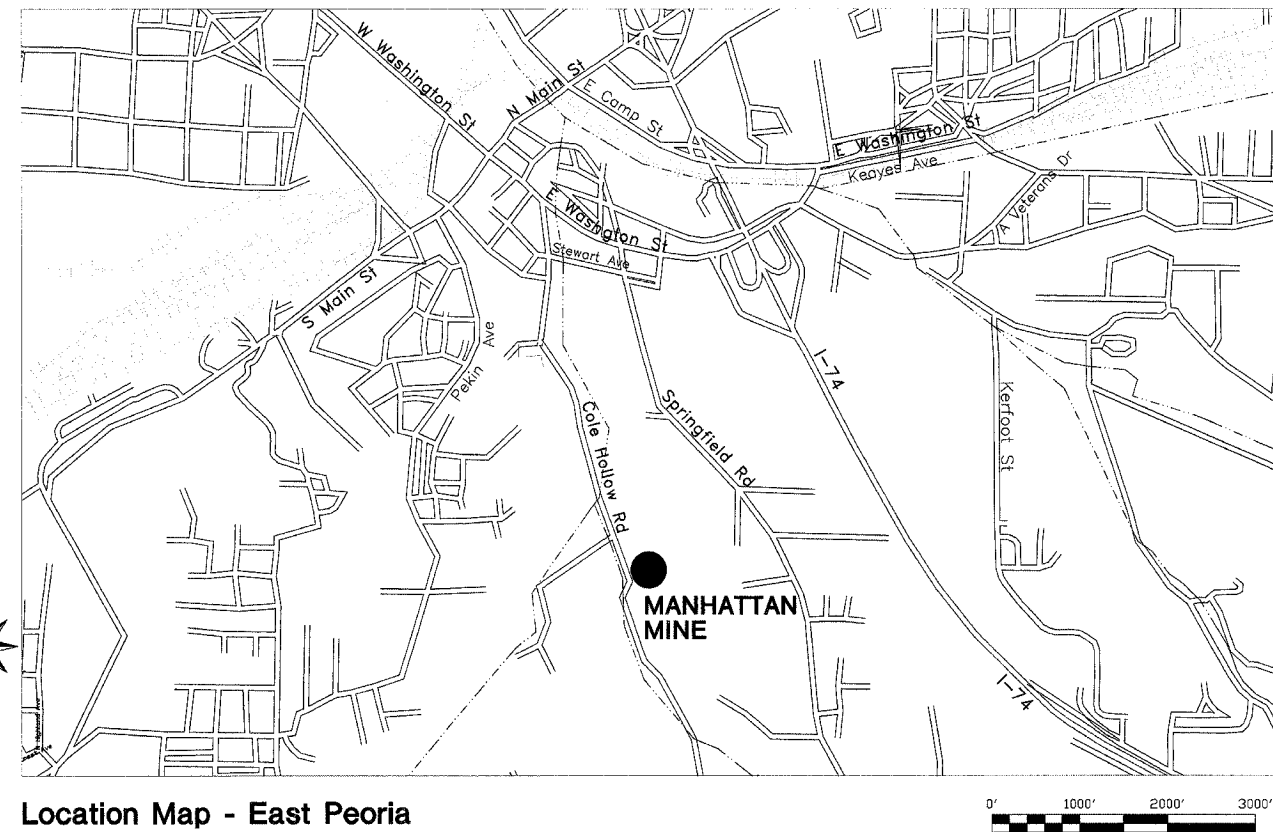
**BURIAL/REMOVAL OF MATERIAL**-Concrete and masonry debris designated for burial by the engineer shall be buried at least three feet below proposed final grade. Onsite organic debris and trash shall be disposed of in an engineer approved offsite landfill in accordance with Sections 201 and 501 of the Special Provisions.

**TREE REMOVAL**-Trees removed shall be disposed of onsite per Section 201 of the Special Provisions.

**EROSION CONTROL**-The contractor shall schedule his operations and take such precautions that may be necessary to prevent or minimize erosion. Failure to comply with this requirement shall cause the contractor to be fully responsible for repairing any eroded areas and cleaning up areas or drainage structures that have become silted in or damaged.

**AGRICULTURAL GROUND LIMESTONE**-Immediately prior to seed bed preparation, fertilizer nutrients and agricultural ground limestone shall be uniformly spread at the rates specified in the plans.

**MULCHING**-Within 24 hours from the time seeding has been performed, the seeded area shall be given a covering of mulch at the rates specified in the plans. The mulch is to be anchored into the soil in accordance with the requirements for method 2, procedure 2 of Article 251.03 of the Standard Specifications. If Excelsior or Special Excelsior Blanket is to be used, the blanket shall be placed the same day that the areas are seeded.



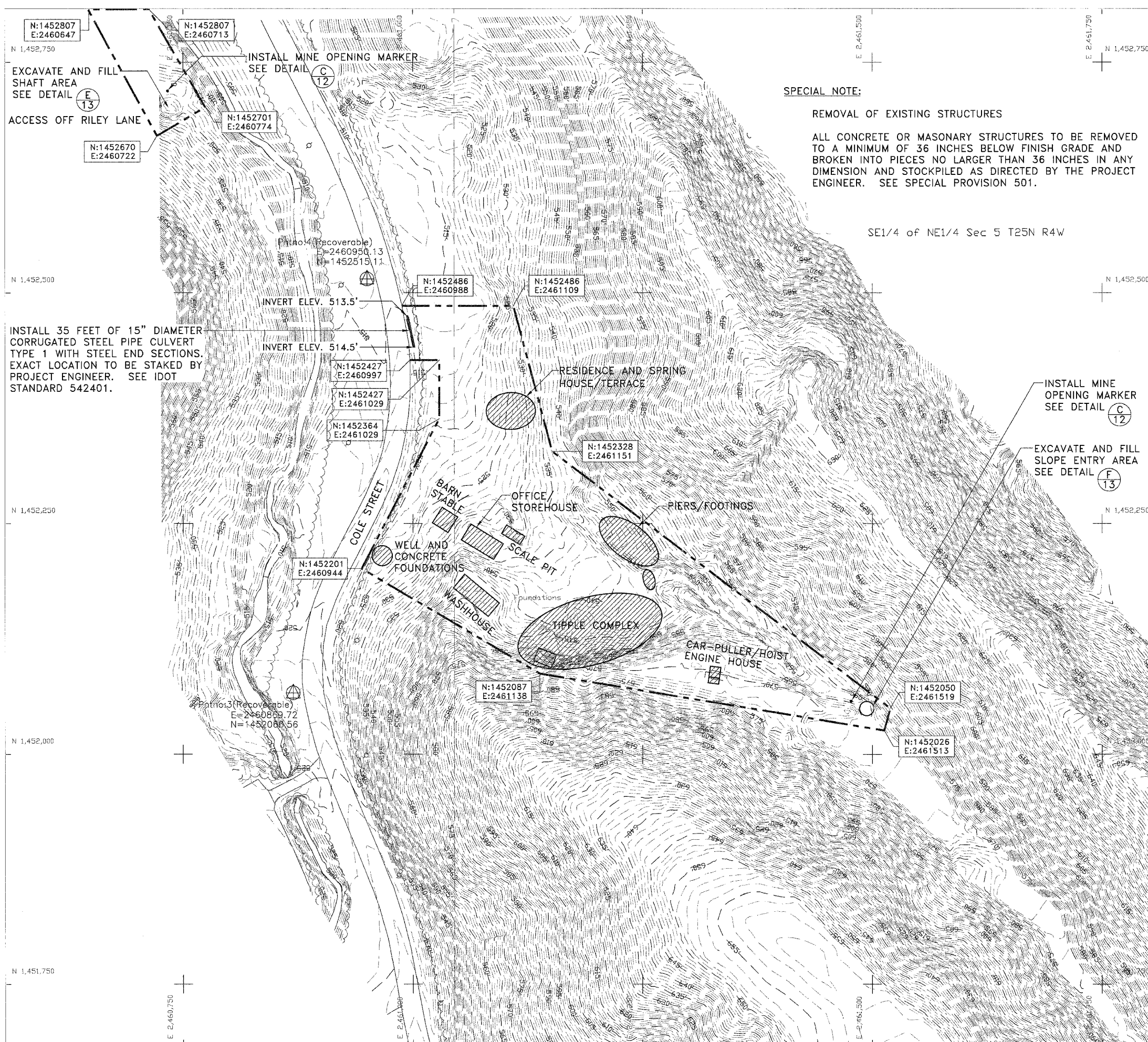
Location Map - East Peoria

State of Illinois  
Department of Natural Resources

Reed City Park Group  
Reclamation Project  
AML-GPoE-0603  
Peoria and Tazewell Counties

Drawn By: J.M., M-LF Date: 3/27/2007  
Checked By:

Summary of Quantities/  
General Notes/Location Map  
Sheet  
2 of 13



**SPECIAL NOTE:**  
 REMOVAL OF EXISTING STRUCTURES  
 ALL CONCRETE OR MASONRY STRUCTURES TO BE REMOVED TO A MINIMUM OF 36 INCHES BELOW FINISH GRADE AND BROKEN INTO PIECES NO LARGER THAN 36 INCHES IN ANY DIMENSION AND STOCKPILED AS DIRECTED BY THE PROJECT ENGINEER. SEE SPECIAL PROVISION 501.

INSTALL 35 FEET OF 15" DIAMETER CORRUGATED STEEL PIPE CULVERT TYPE 1 WITH STEEL END SECTIONS. EXACT LOCATION TO BE STAKED BY PROJECT ENGINEER. SEE IDOT STANDARD 542401.

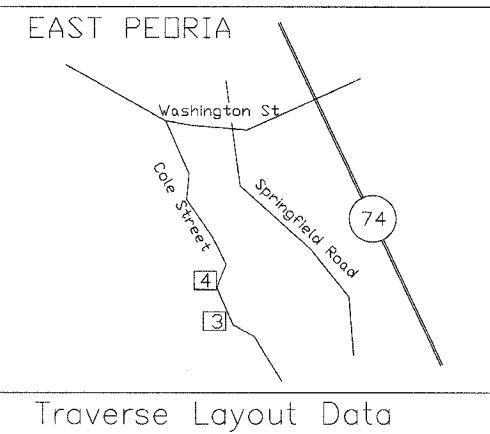
EXCAVATE AND FILL SHAFT AREA SEE DETAIL (E 13)  
 ACCESS OFF RILEY LANE

INSTALL MINE OPENING MARKER SEE DETAIL (C 12)

INSTALL MINE OPENING MARKER SEE DETAIL (C 12)

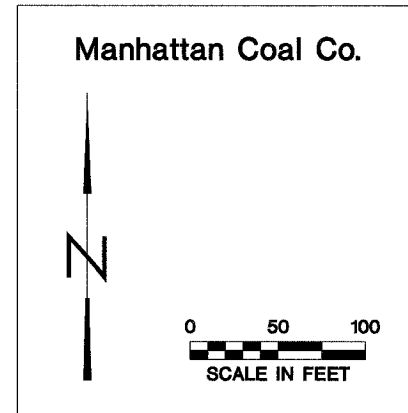
EXCAVATE AND FILL SLOPE ENTRY AREA SEE DETAIL (F 13)

SE1/4 of NE1/4 Sec 5 T25N R4W



**Legend**

	450	EXISTING CONTOUR
	450	PROPOSED CONTOUR
		CONSTRUCTION LIMITS
		EDGE OF ROAD
		TREELINE
		EDGE OF WATER
		SURVEY CONTROL POINT

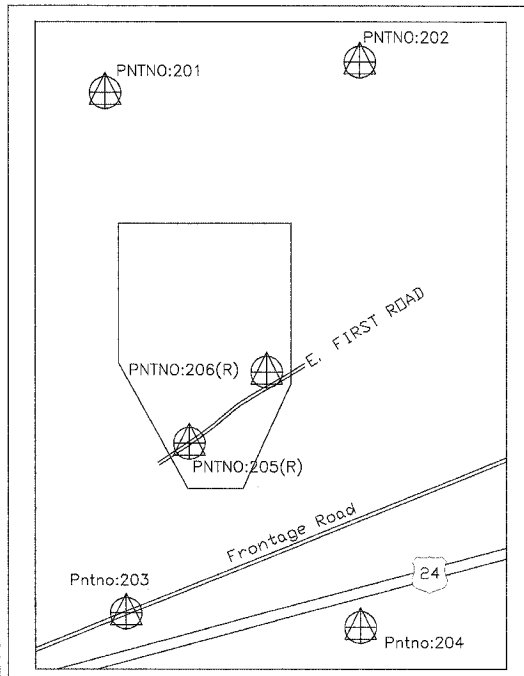
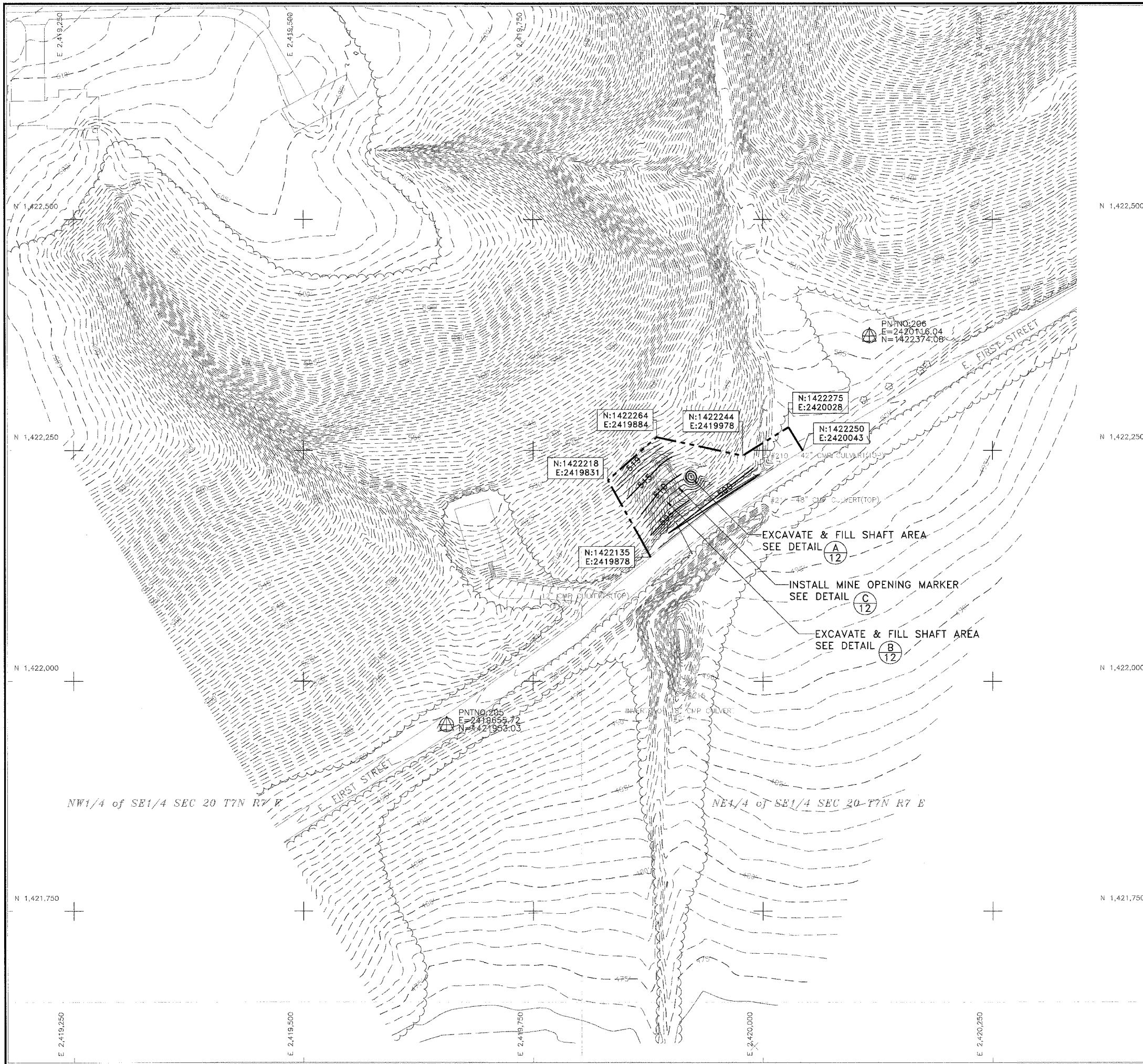


State of Illinois  
 Department of Natural Resources

Reed City Park Group  
 Reclamation Project  
 AML-GPoE-0603  
 Peoria County

Drawn By: M-LF  
 Checked By:  
 Date: 3/16/2007

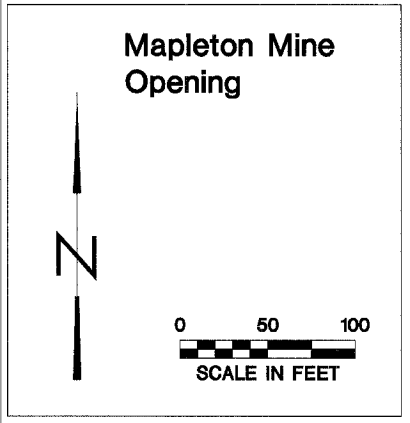
Existing & Proposed  
 Conditions  
 Sheet  
 3 of 13



Traverse Layout Data

	450	EXISTING CONTOUR
	450	PROPOSED CONTOUR
		CONSTRUCTION LIMITS
		EDGE OF ROAD
		TREELINE
		EDGE OF WATER
		SURVEY CONTROL POINT

Legend

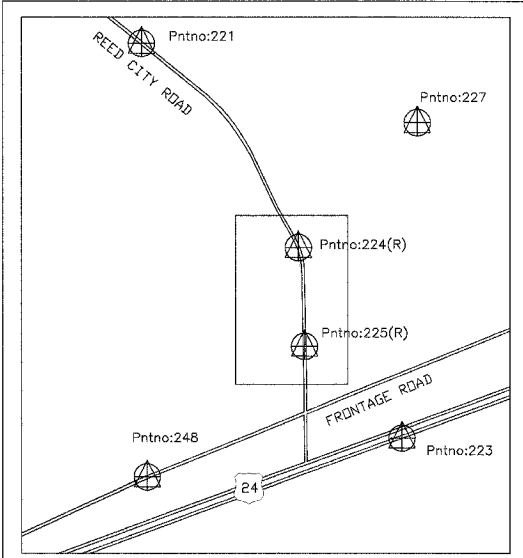
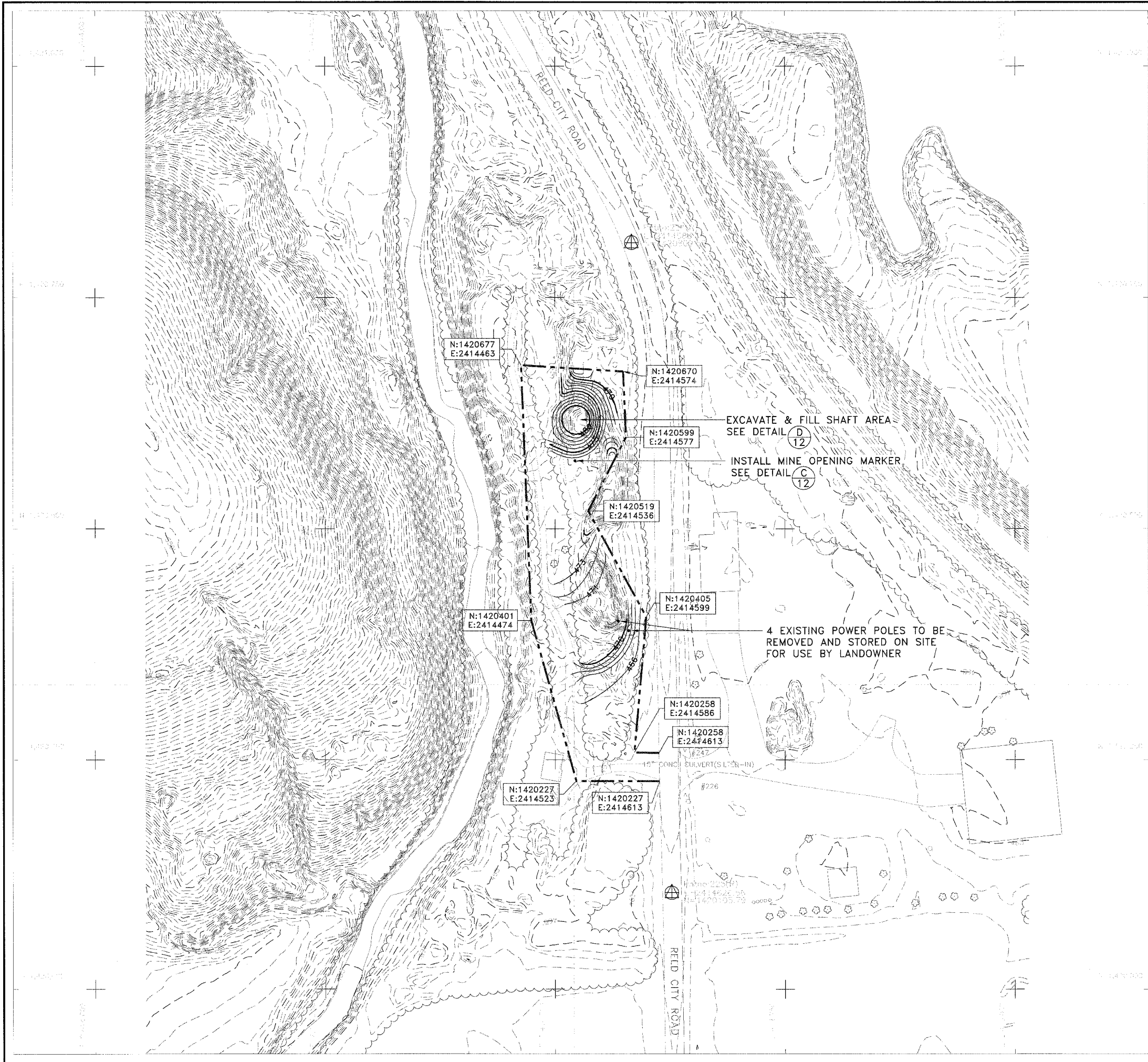


State of Illinois  
Department of Natural Resources

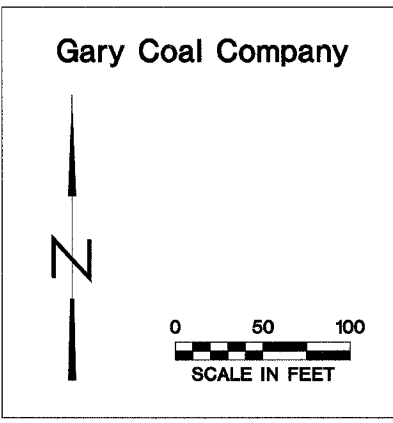
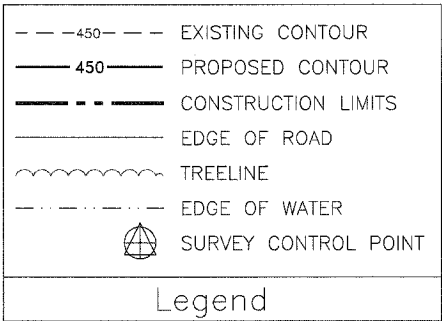
Reed City Park Group  
Reclamation Project  
AML-GPoE-0603  
Peoria County

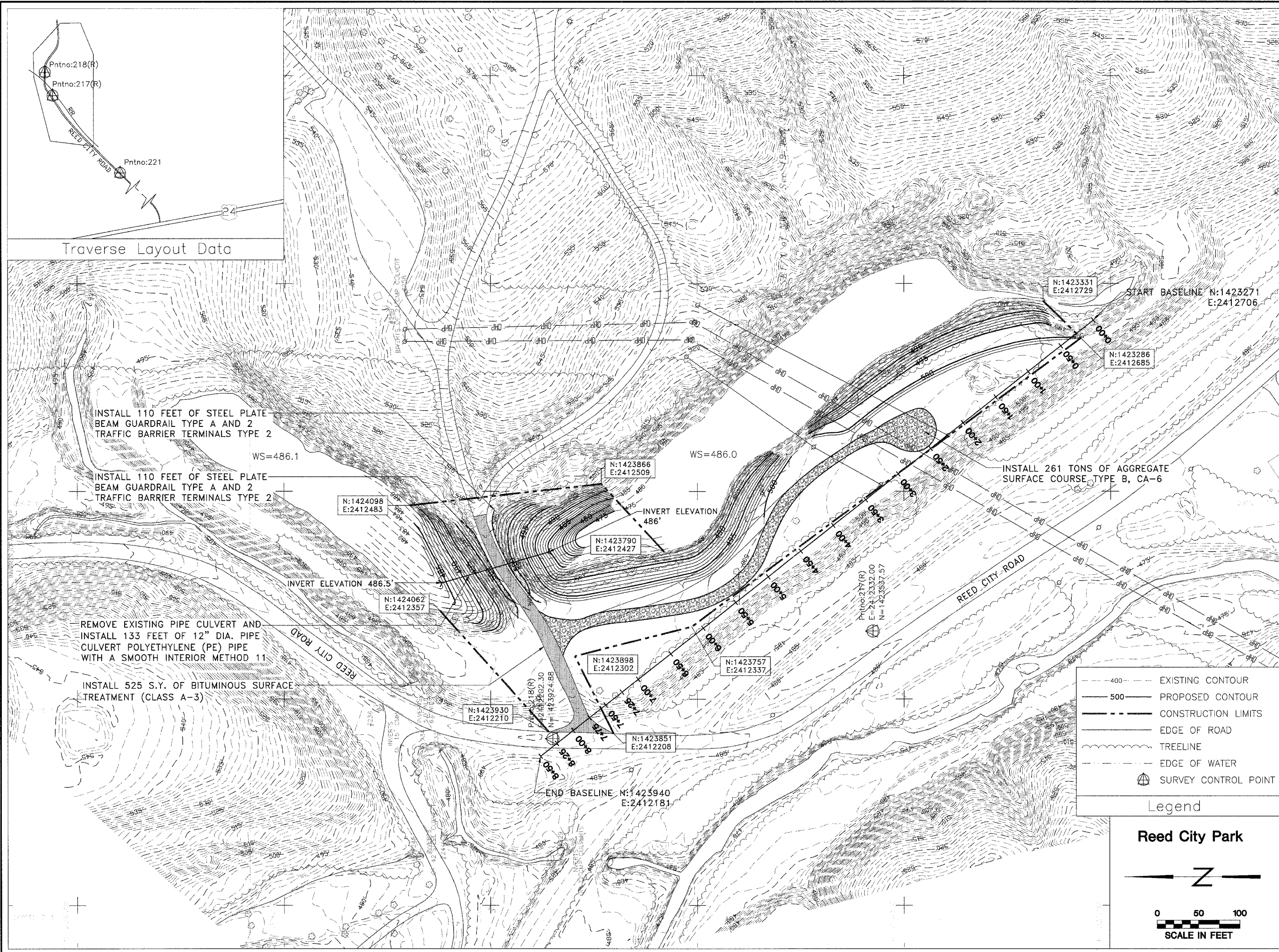
Drawn By: M-LF  
Checked By:  
Date: 3/16/2007

Existing & Proposed  
Conditions  
Sheet  
4 of 13

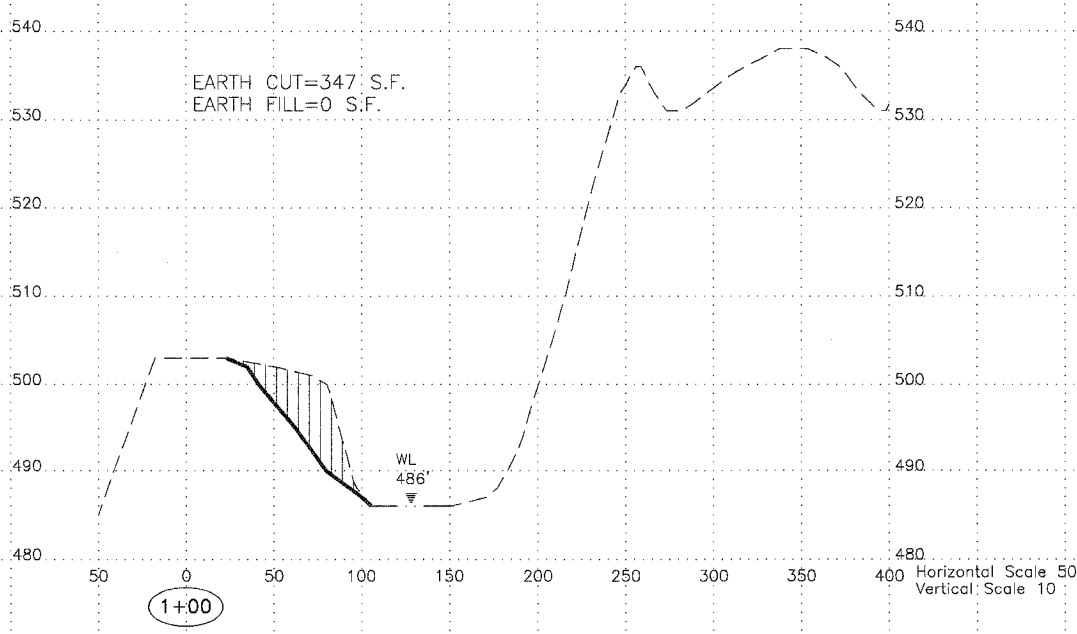
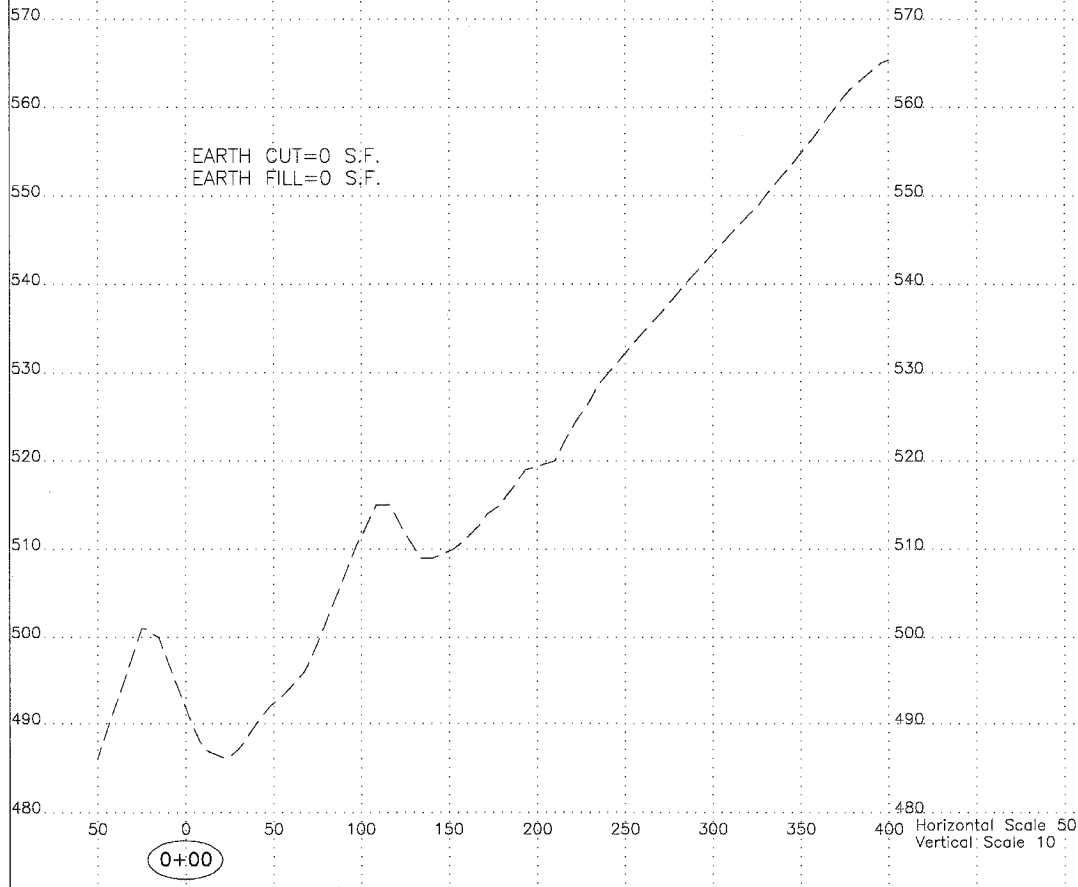
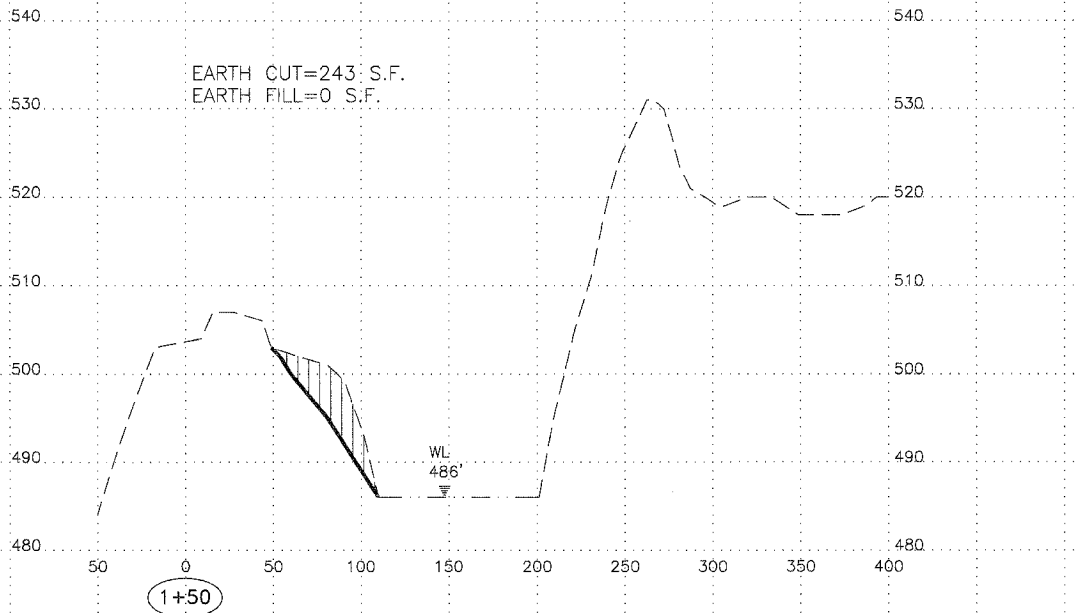
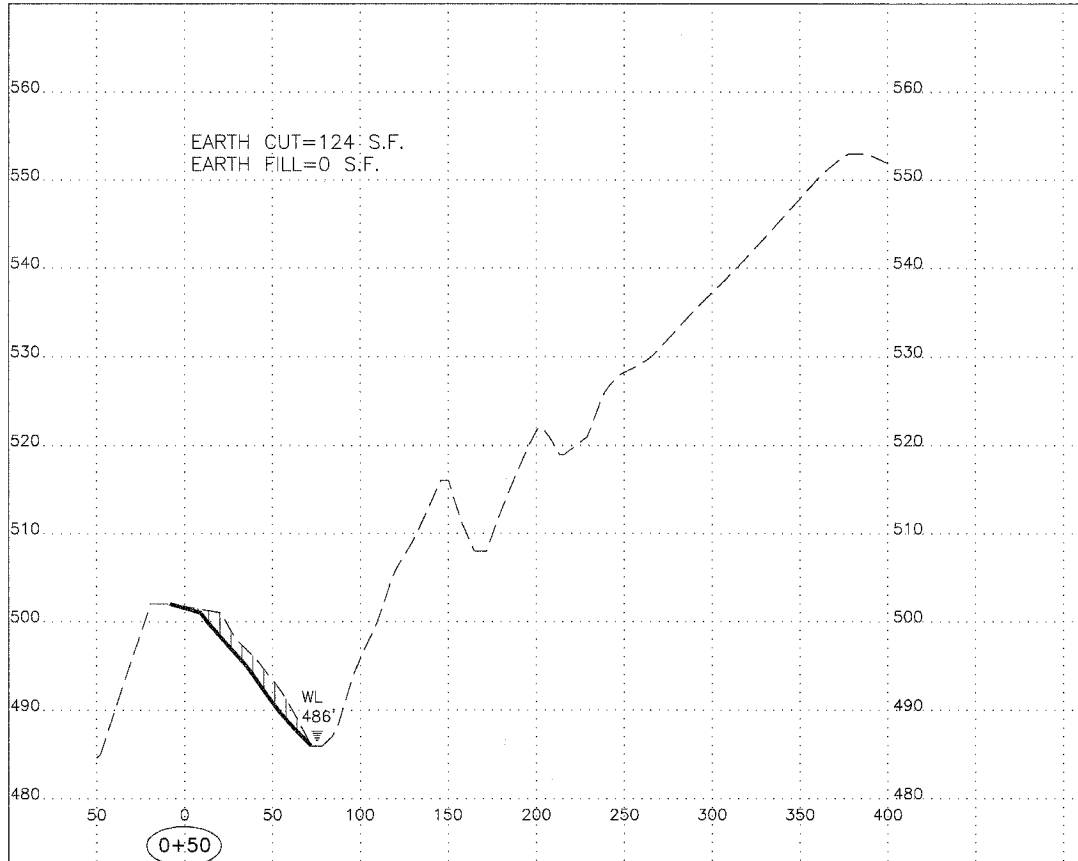
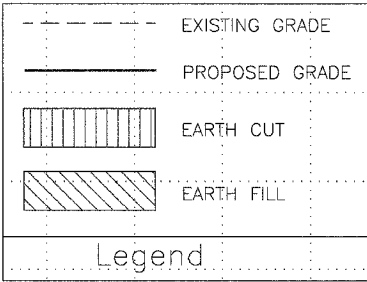


Traverse Layout Data

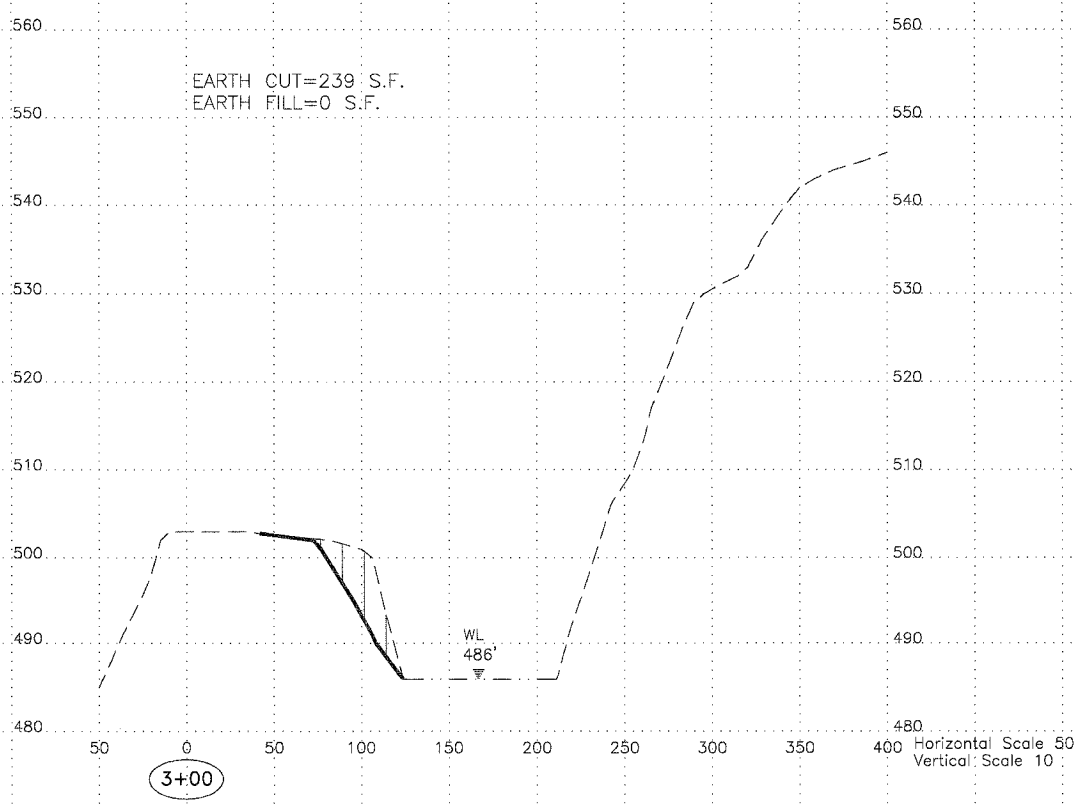
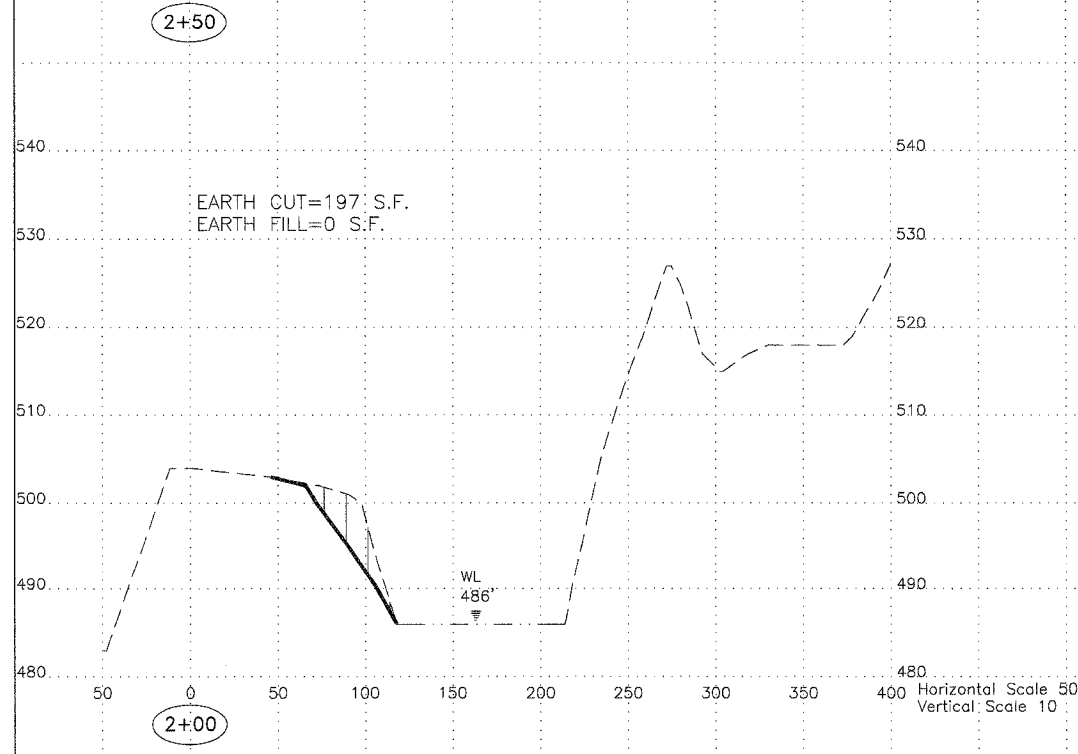
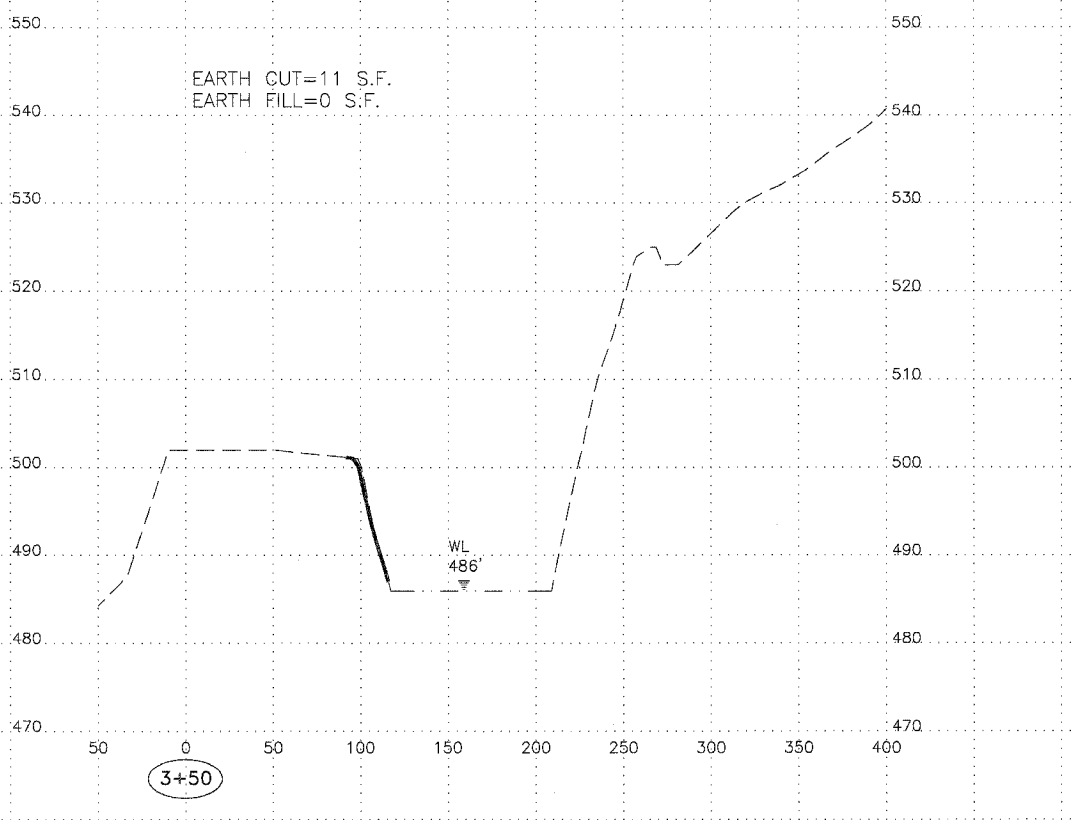
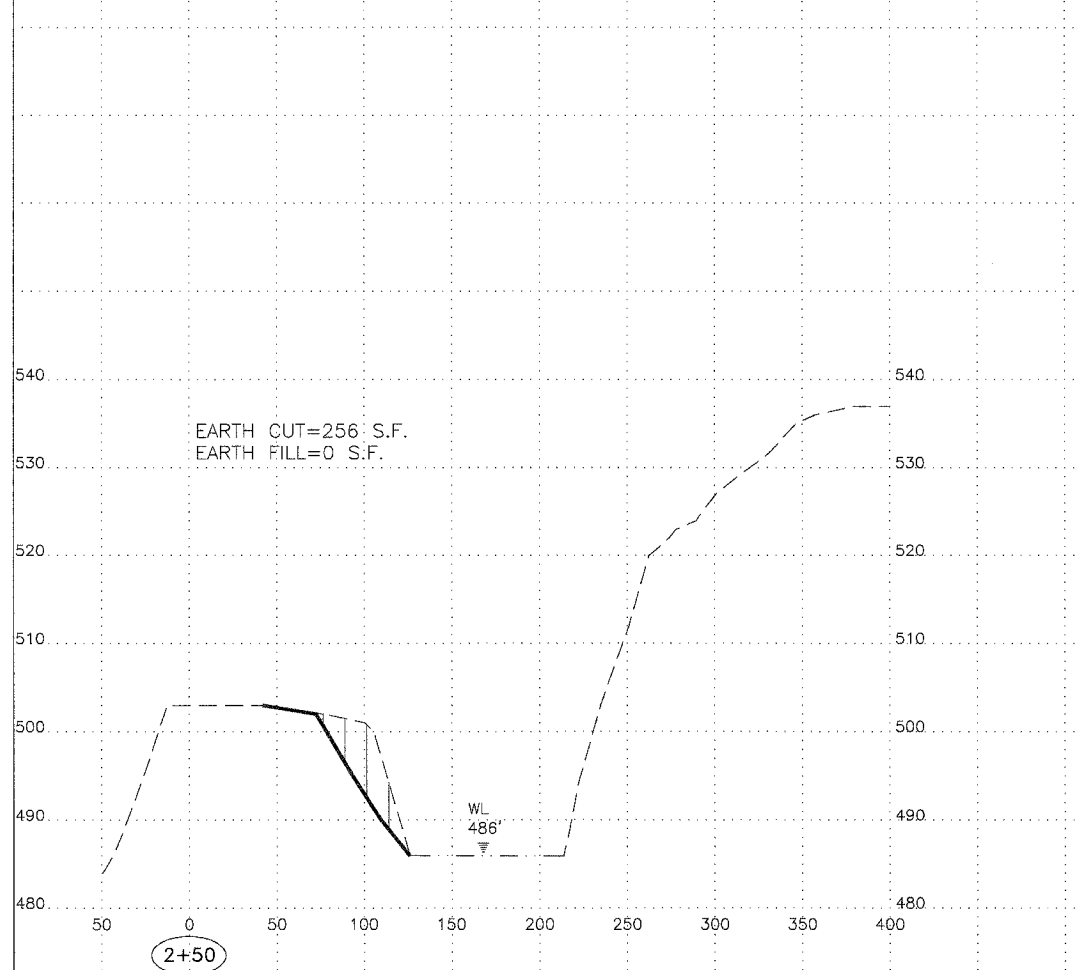
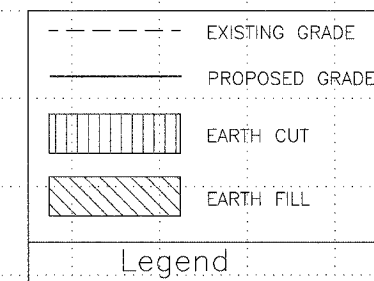




Reed City Park Group  
 Reclamation Project  
 AML-GPoE-0603  
 Peoria County

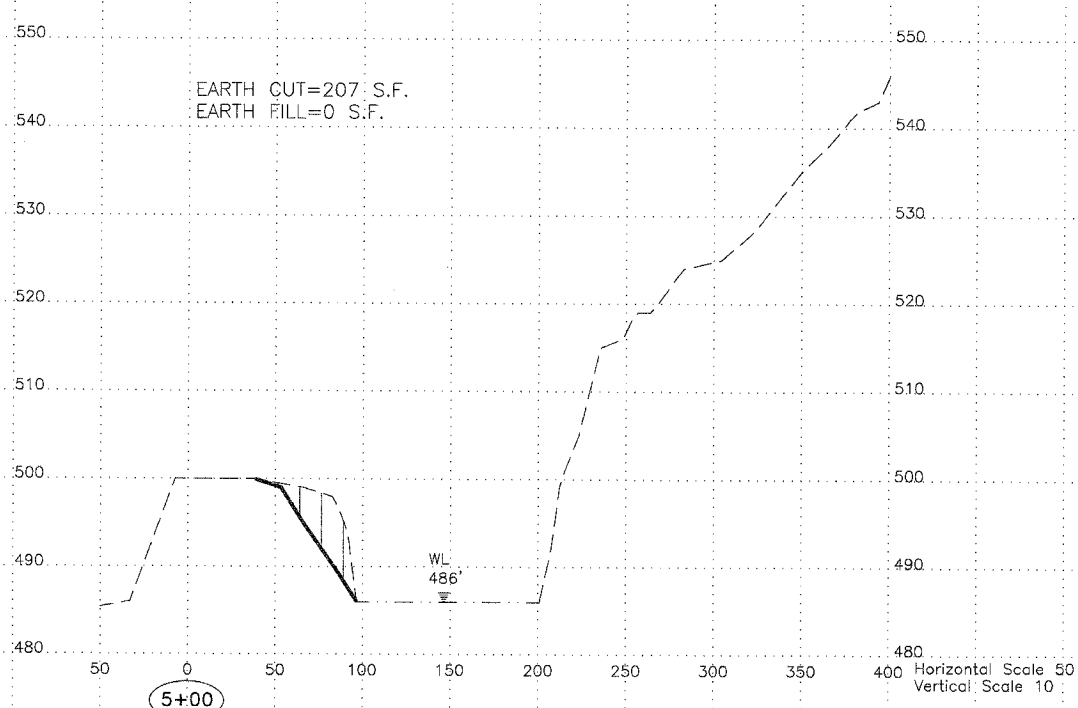
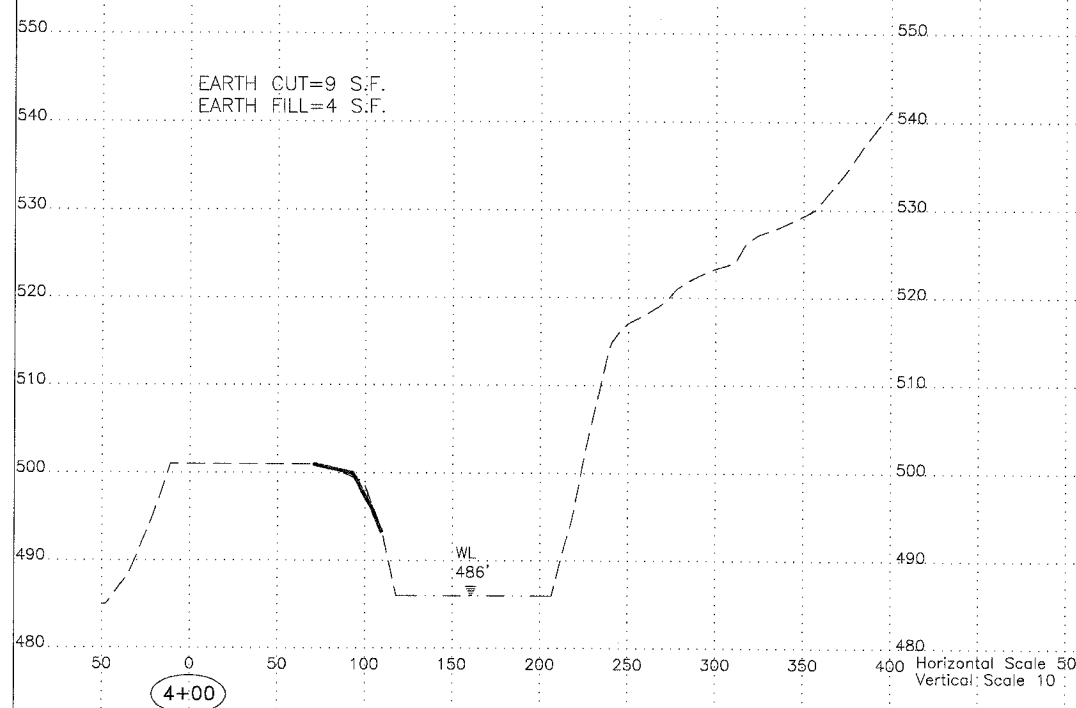
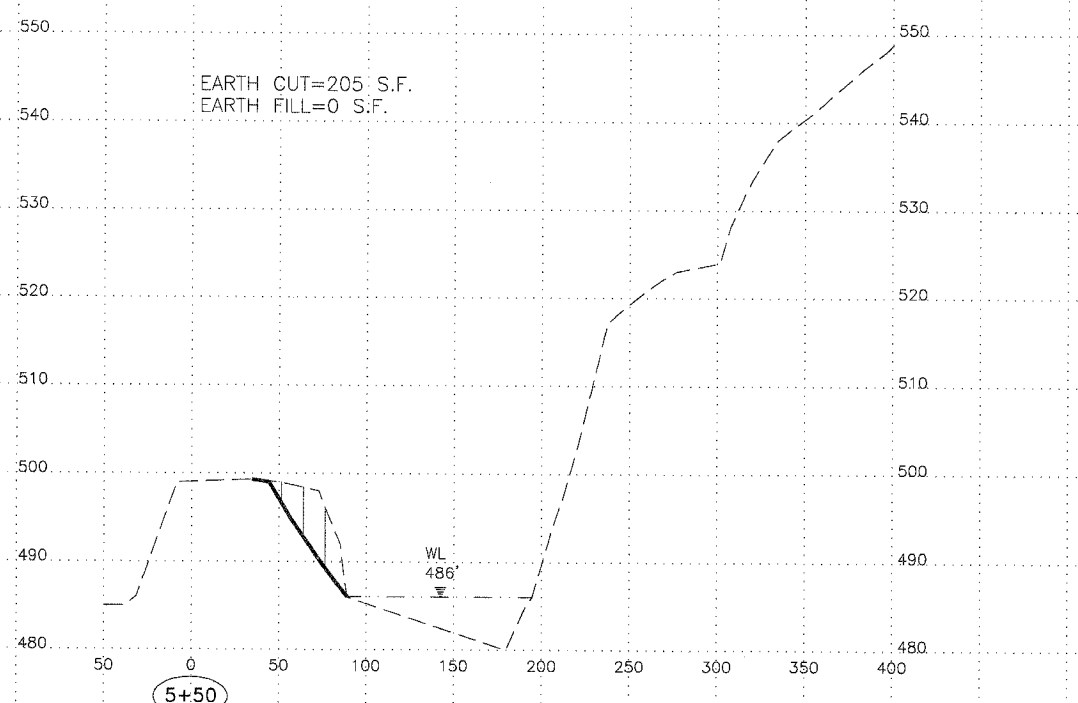
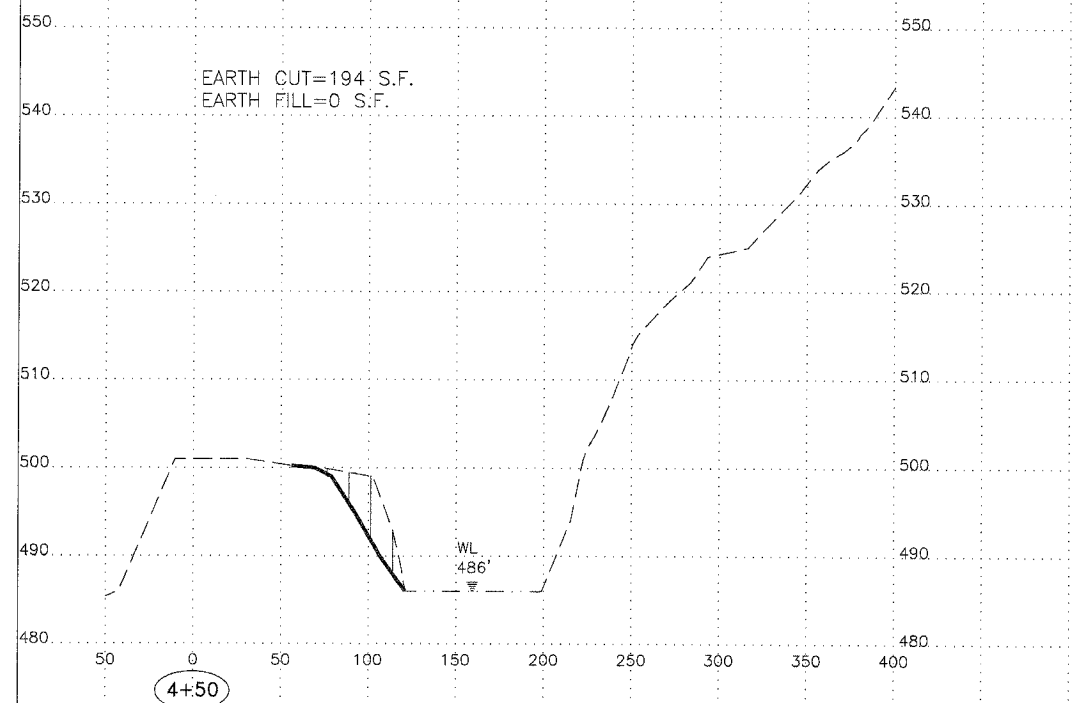
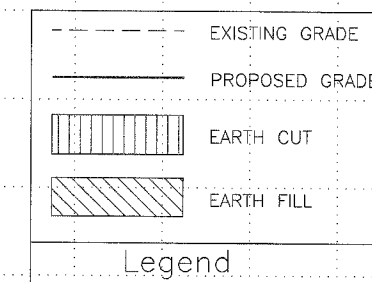


Reed City Park Group  
 Reclamation Project  
 AML-GPoE-0603  
 Peoria County


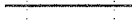

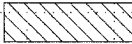


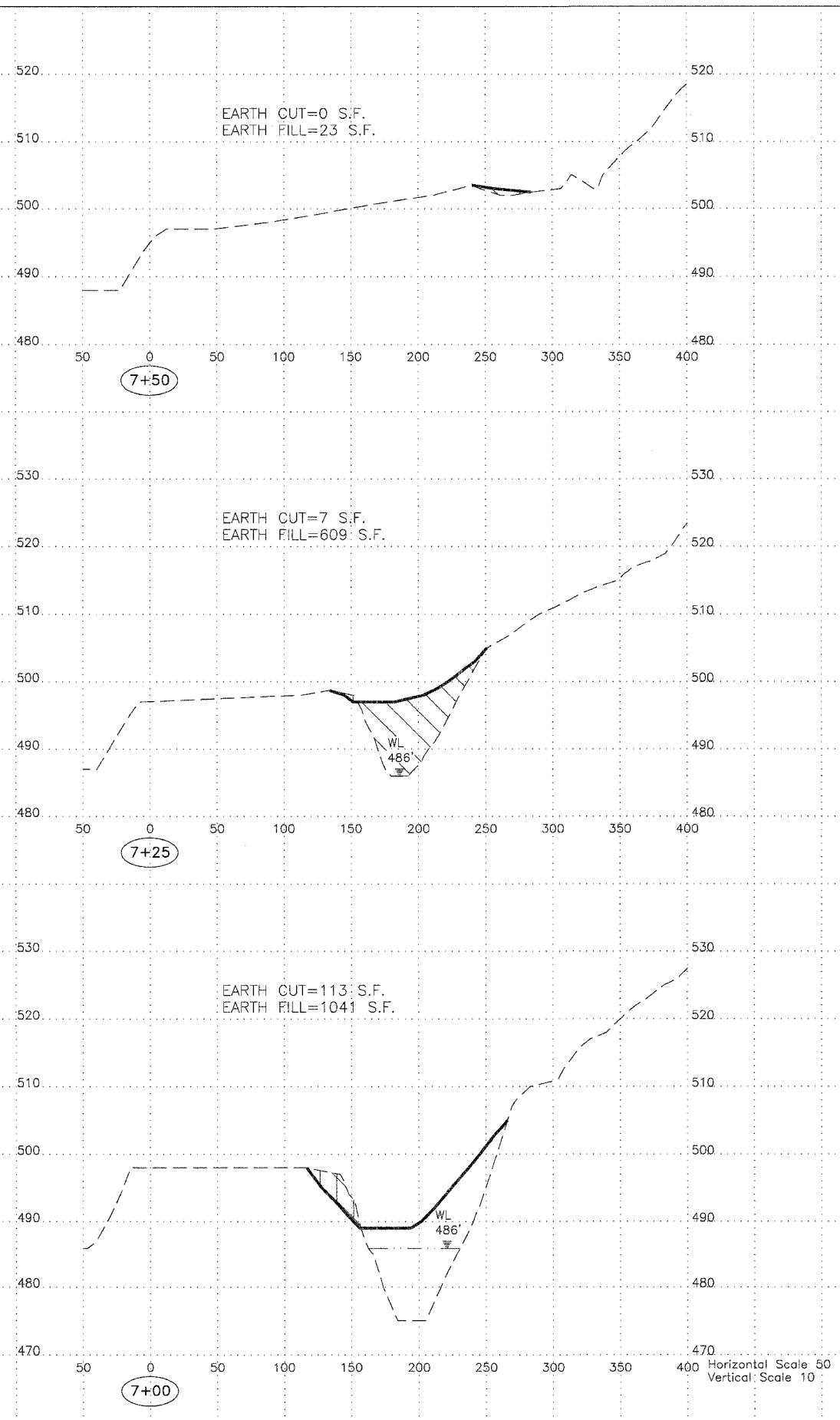
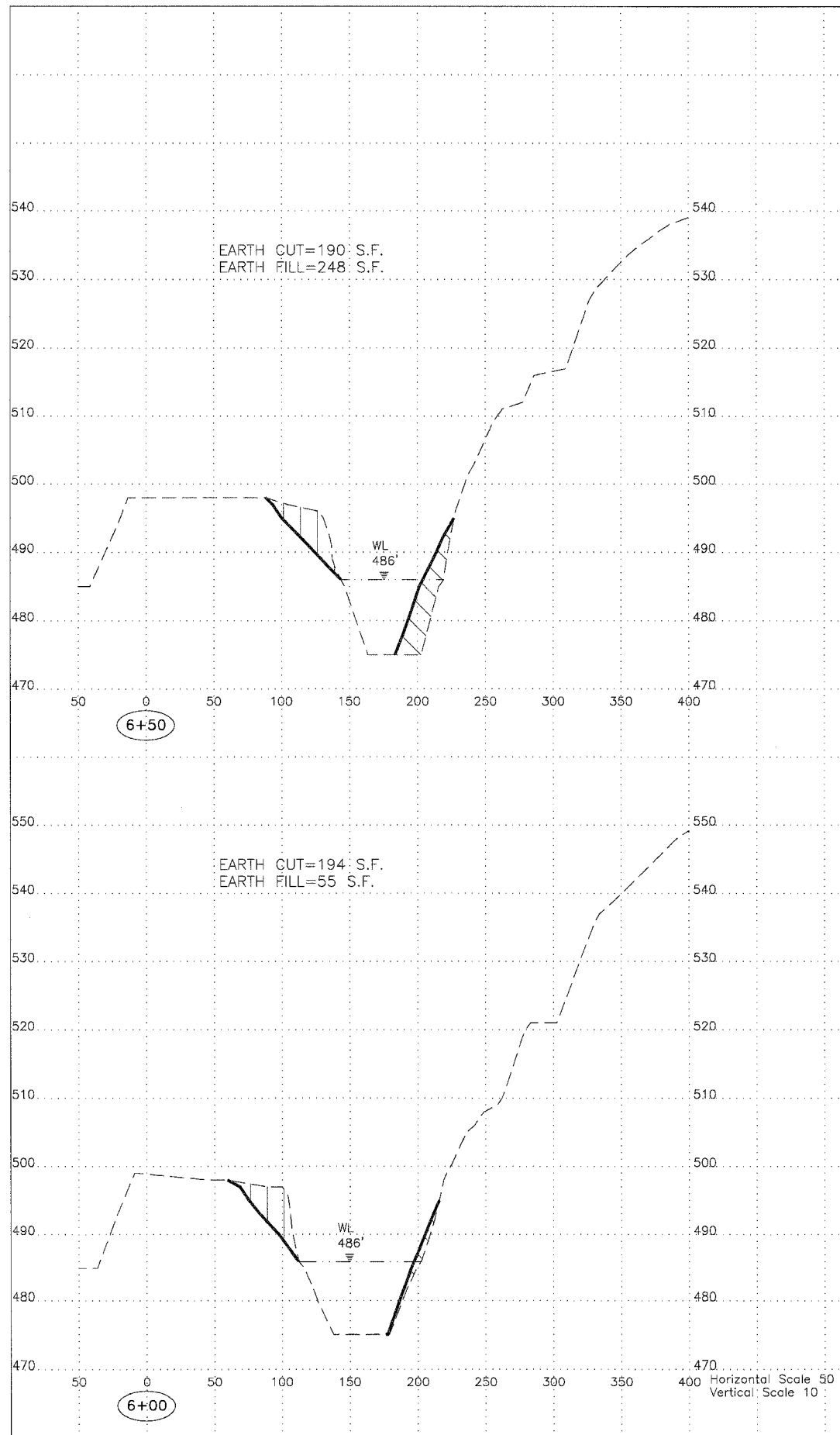


Reed City Park Group  
Reclamation Project  
AML-GPoE-0603  
Peoria County

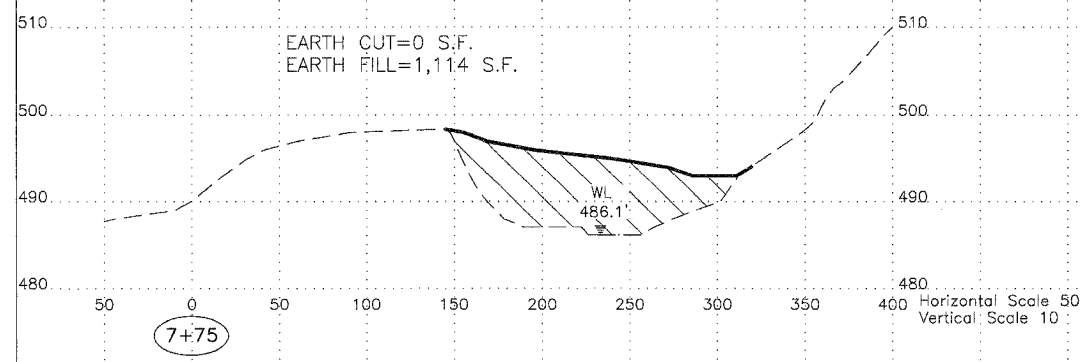
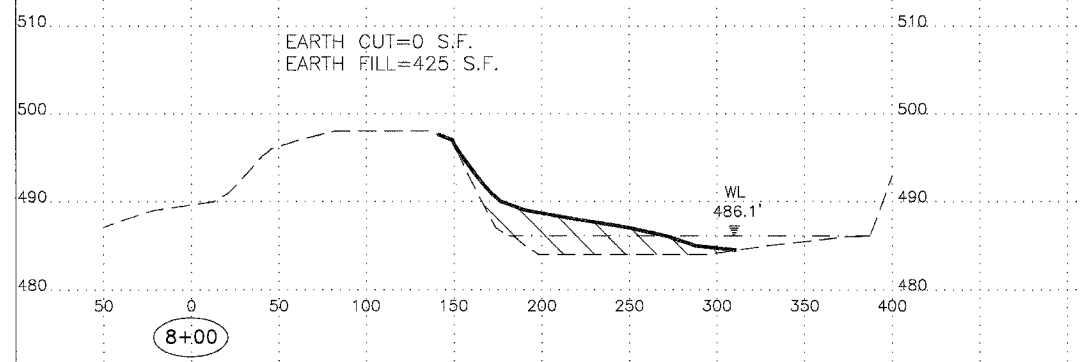
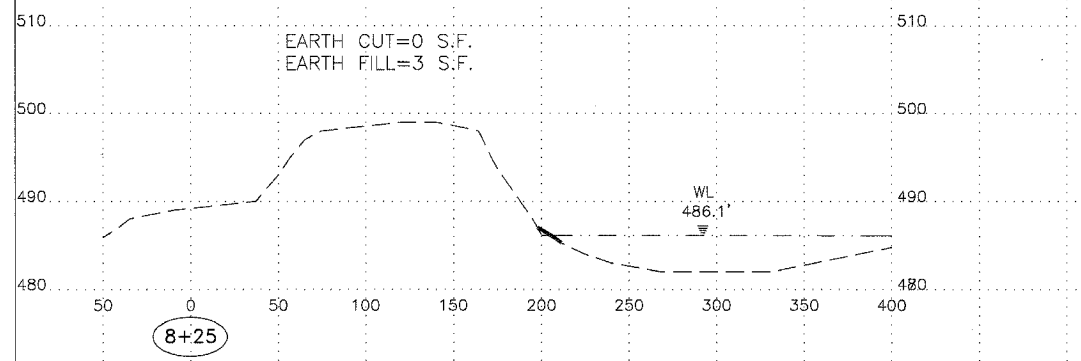
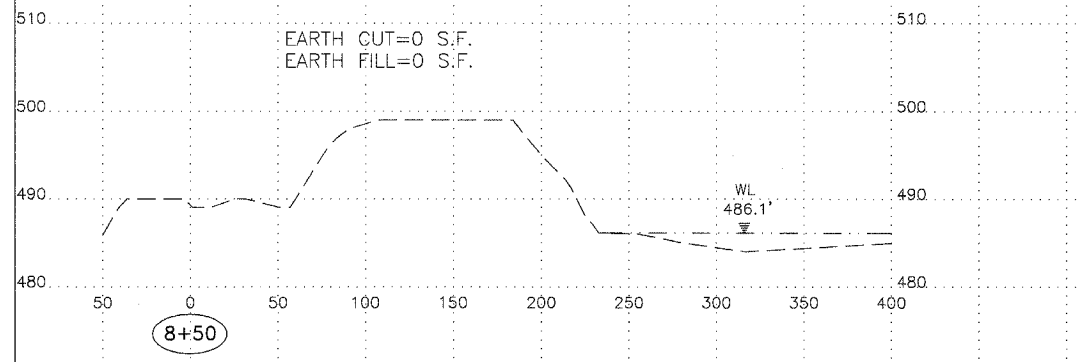
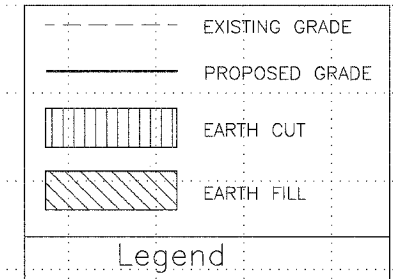


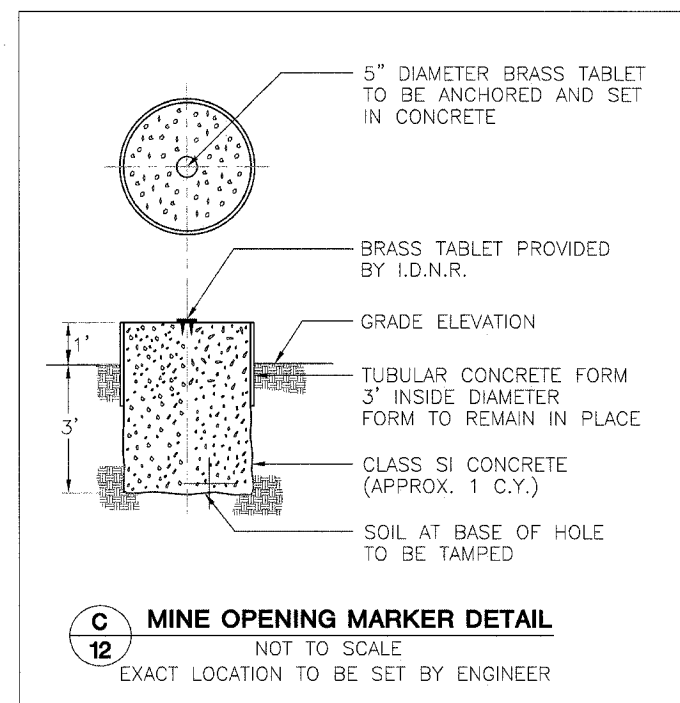
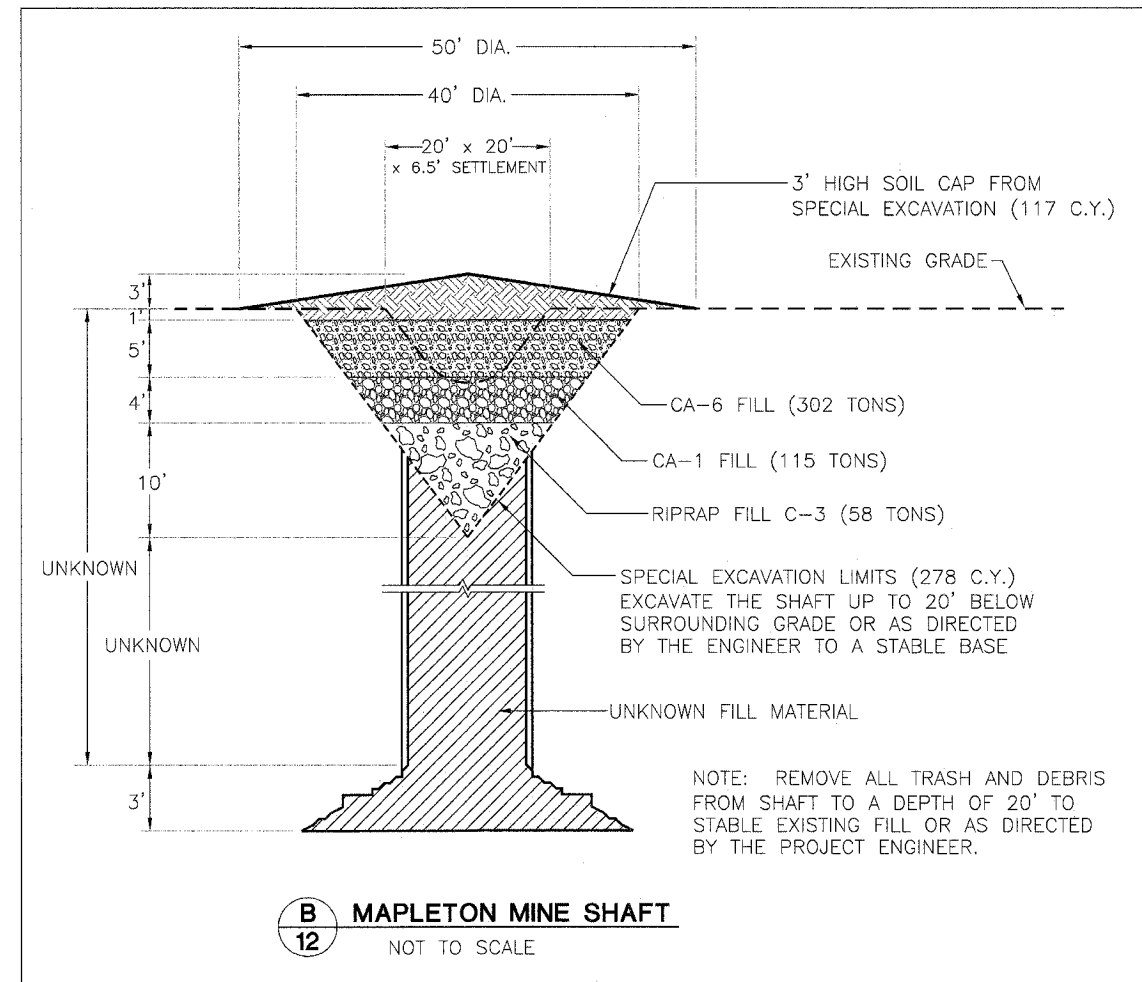
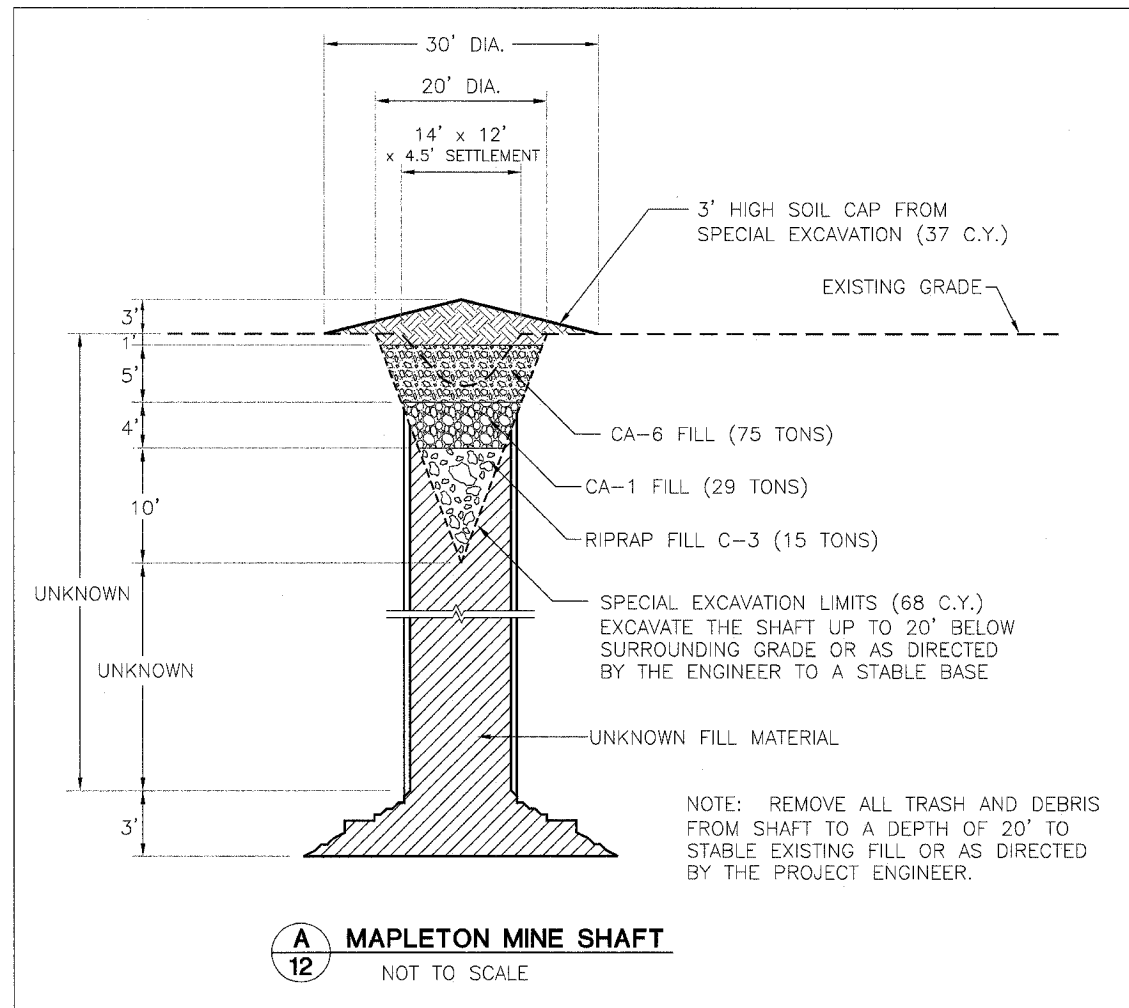
**Reed City Park Group  
Reclamation Project  
AML-GPoE-0603  
Peoria County**

	EXISTING GRADE
	PROPOSED GRADE
	EARTH CUT
	EARTH FILL
Legend	

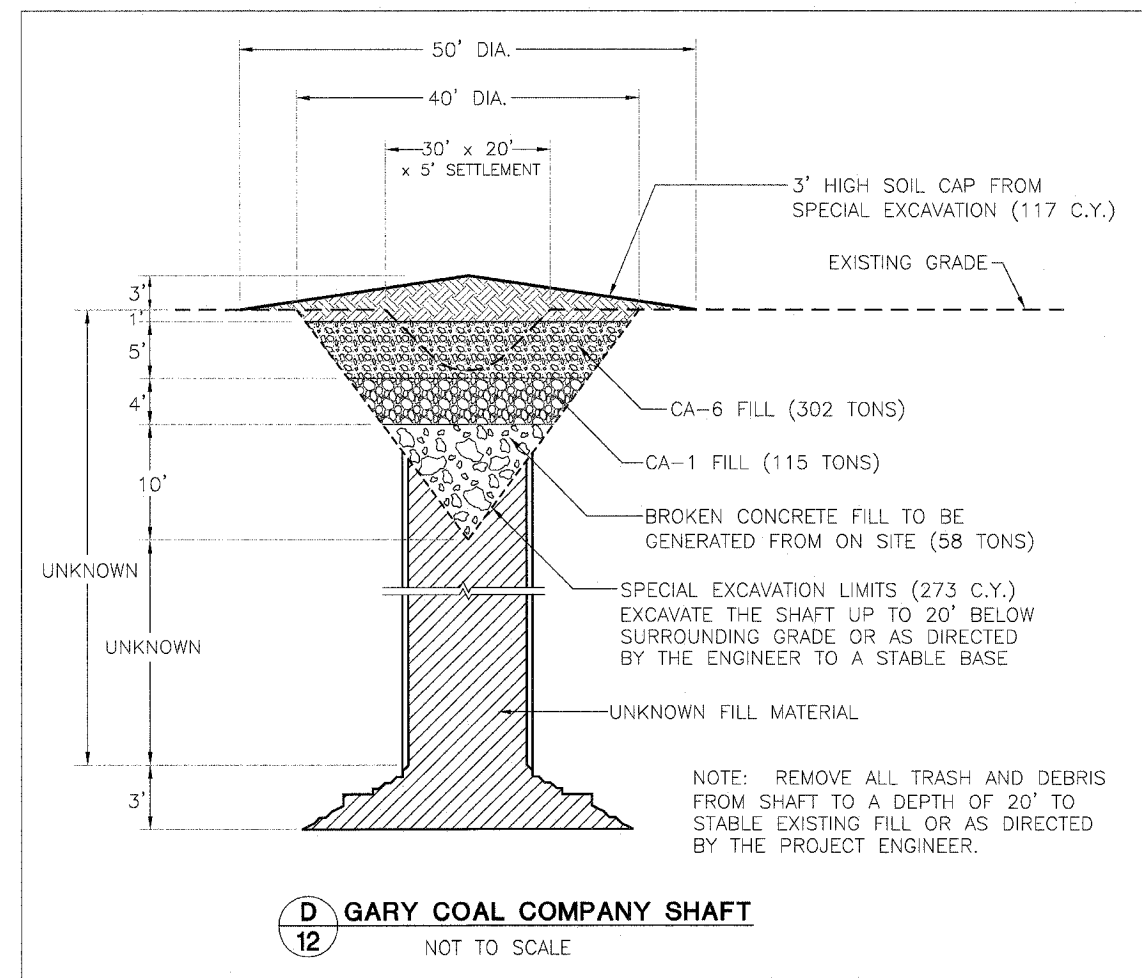


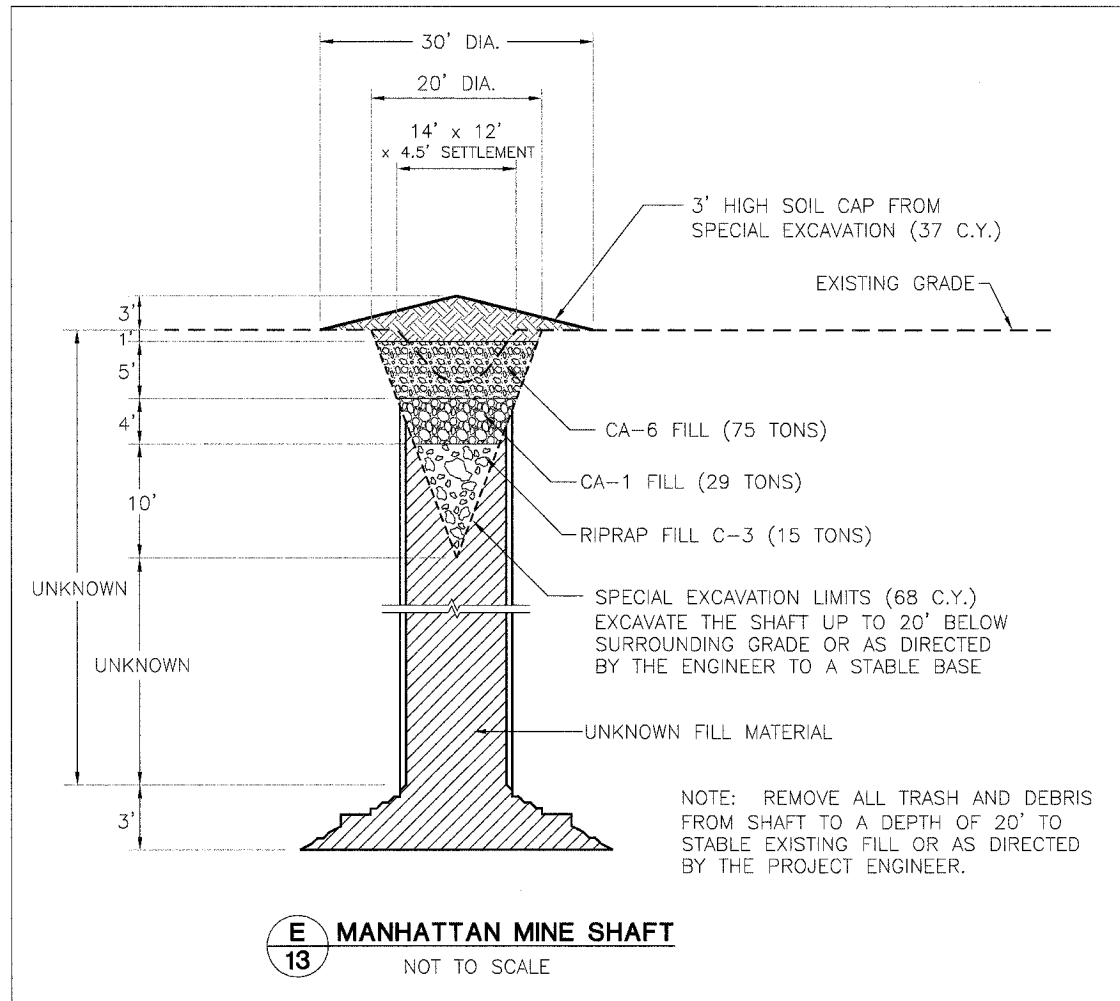
Reed City Park Group  
 Reclamation Project  
 AML-GPoE-0603  
 Peoria County





NOTE:  
DUE TO THE UNKNOWN CONDITIONS THAT EXIST IN AND AROUND THE SHAFTS, THE CONTRACTOR SHALL USE EXTREME CAUTION WHEN PERFORMING WORK NEAR THEM. THE ENGINEER RESERVES THE RIGHT TO INCREASE OR DECREASE THE QUANTITY FOR SPECIAL EXCAVATION AND BACKFILLING MATERIALS AS DETERMINED BY THE EXACT CONDITIONS ENCOUNTERED DURING SPECIAL EXCAVATION.





**NOTE:**  
DUE TO THE UNKNOWN CONDITIONS THAT EXIST IN AND AROUND THE SHAFTS, THE CONTRACTOR SHALL USE EXTREME CAUTION WHEN PERFORMING WORK NEAR THEM. THE ENGINEER RESERVES THE RIGHT TO INCREASE OR DECREASE THE QUANTITY FOR SPECIAL EXCAVATION AND BACKFILLING MATERIALS AS DETERMINED BY THE EXACT CONDITIONS ENCOUNTERED DURING SPECIAL EXCAVATION.

