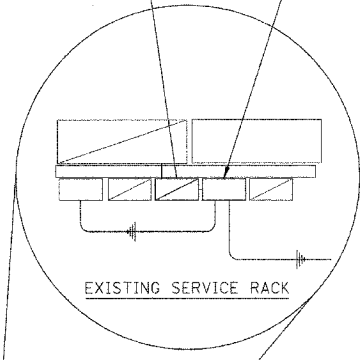
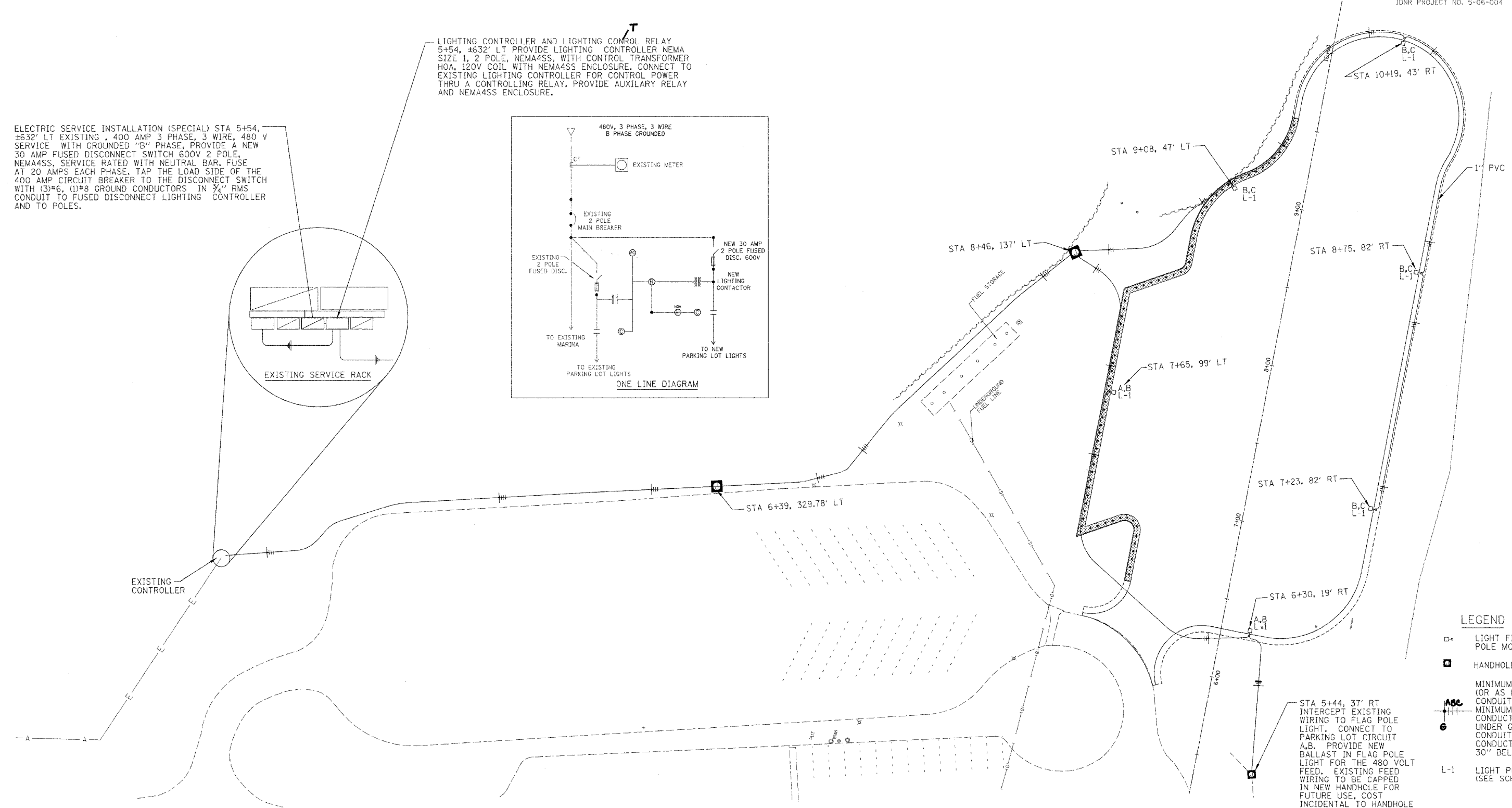
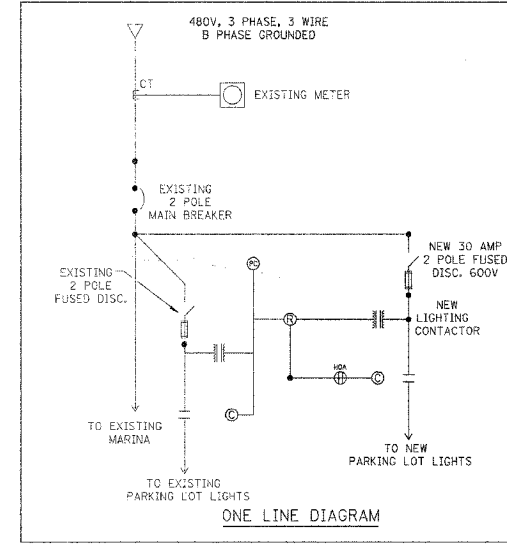


ELECTRIC SERVICE INSTALLATION (SPECIAL) STA 5+54, #632' LT EXISTING, 400 AMP 3 PHASE, 3 WIRE, 480 V SERVICE WITH GROUNDED "B" PHASE, PROVIDE A NEW 30 AMP FUSED DISCONNECT SWITCH 600V 2 POLE, NEMA4SS, SERVICE RATED WITH NEUTRAL BAR. FUSE AT 20 AMPS EACH PHASE. TAP THE LOAD SIDE OF THE 400 AMP CIRCUIT BREAKER TO THE DISCONNECT SWITCH WITH (3)\*6, (1)\*8 GROUND CONDUCTORS IN 3/4" RMS CONDUIT TO FUSED DISCONNECT LIGHTING CONTROLLER AND TO POLES.

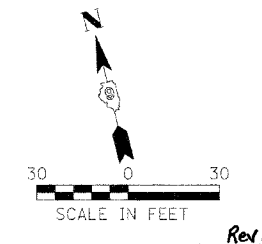


LIGHTING CONTROLLER AND LIGHTING CONTROL RELAY 5+54, #632' LT PROVIDE LIGHTING CONTROLLER NEMA SIZE 1, 2 POLE, NEMA4SS, WITH CONTROL TRANSFORMER HOA, 120V COIL WITH NEMA4SS ENCLOSURE. CONNECT TO EXISTING LIGHTING CONTROLLER FOR CONTROL POWER THRU A CONTROLLING RELAY. PROVIDE AUXILIARY RELAY AND NEMA4SS ENCLOSURE.



- LEGEND
- LIGHT FIXTURE, WOOD POLE MOUNTED
  - HANDHOLE
  - MINIMUM 1" PVC (OR AS NOTED) CONDUIT WITH MINIMUM #8 CONDUCTORS UNDER GROUND CONDUIT & CONDUCTORS 30" BELOW GRADE
  - L-1 LIGHT POLE NUMBER (SEE SCHEDULE)

LUMINAIRE SCHEDULE							
TYPE	LUMINAIRE		LAMP DATA				
	DESCRIPTION		VOLT AMPS	VOLTS	LAMP CODE	QUANTITY	WATTS
L-1	LUMINAIRE, SODIUM VAPOR	WOODEN POLE MOUNTED OUTDOOR LIGHT FIXTURE WITH 8' ARM. PROVIDE ALL ACCESSORIES FOR MOUNTING ON POLE.	465	480	400 S	6	400



REVISIONS	
DATE	NAME
03/20/07	JJ

ILLINOIS DEPARTMENT OF TRANSPORTATION

ELECTRICAL PLAN

IDOT / IDNR

GOLCONDA MARINA RECREATION AREA

SCALE: VERT. / HORIZ. / DATE: 8/17/06

DRAWN BY: MAL / CHECKED BY: RGD