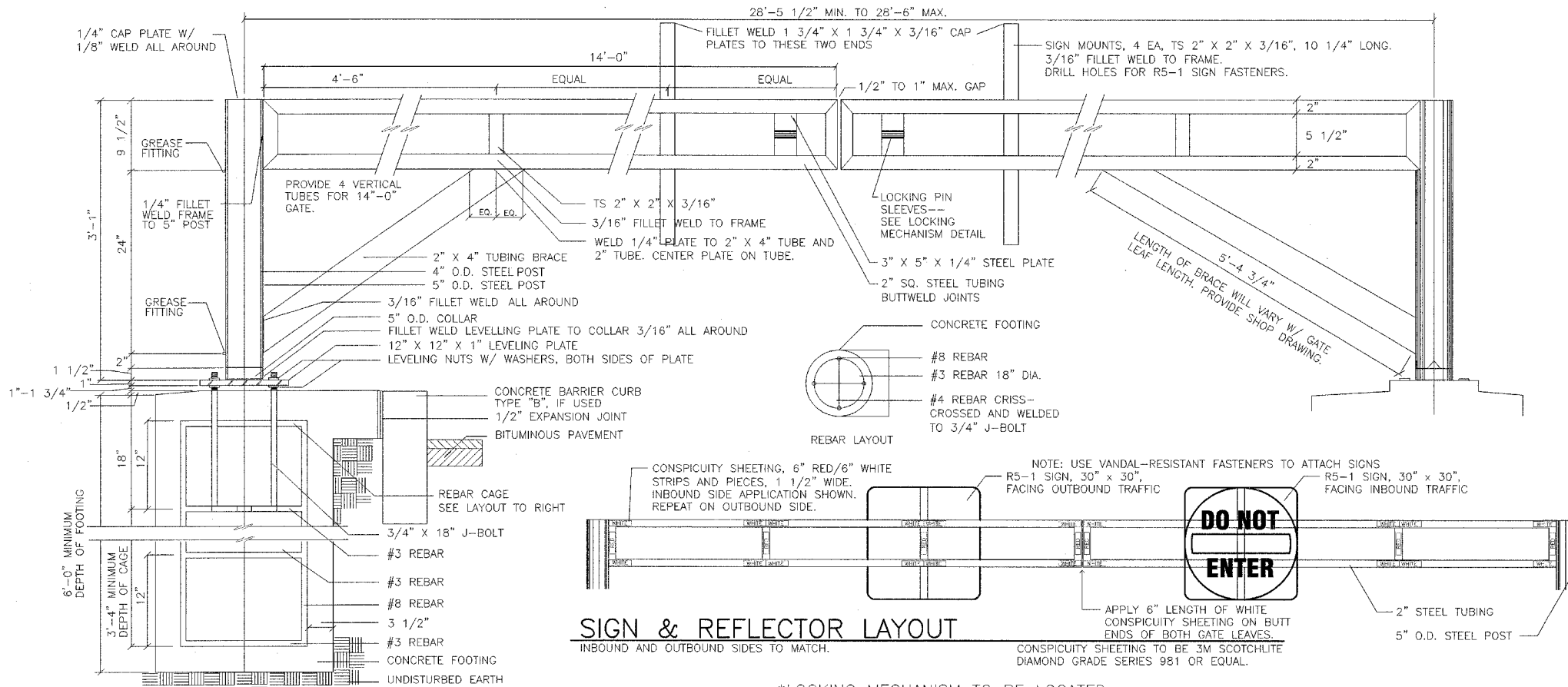
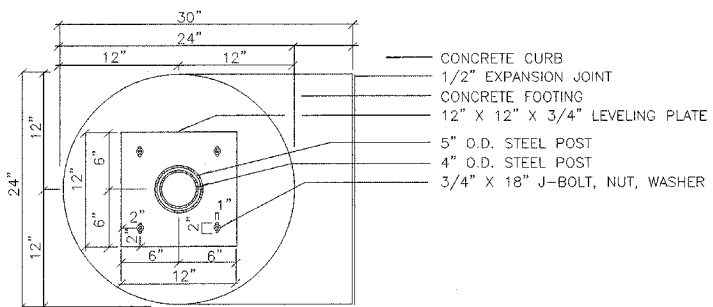


F.A. RTE.	SECTION	COUNTY	TOTAL SHEETS	SHEET NO.
	PARK ROADS	LAKE	26	13
STA.		TO STA.		
FED. ROAD DIST. NO.		ILLINOIS FED. AID PROJECT		
IDNR PROJECT NO. 2-06-003				



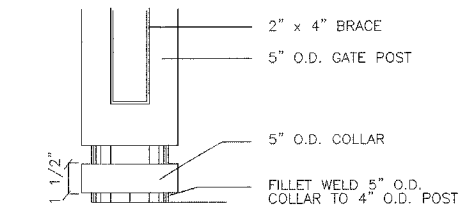
**SWING GATE--FRONT SIDE**

REBAR ELEVATION/SECTION



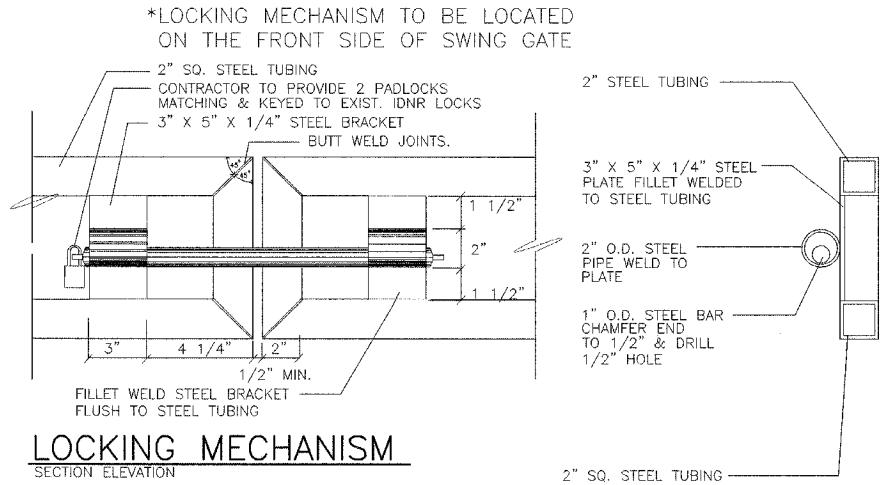
**FOOTING PLAN**

PLAN



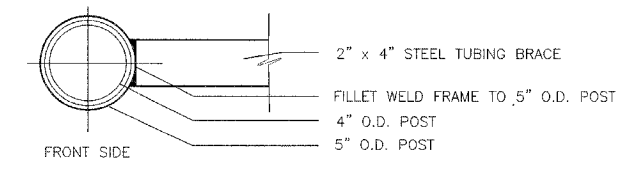
**POST, SLEEVE, & COLLAR**

ELEVATION



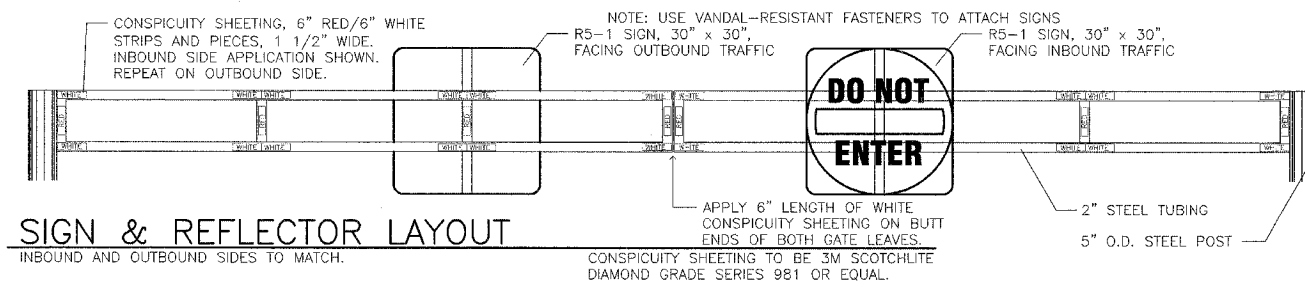
**LOCKING MECHANISM**

SECTION ELEVATION



**HINGE POST**

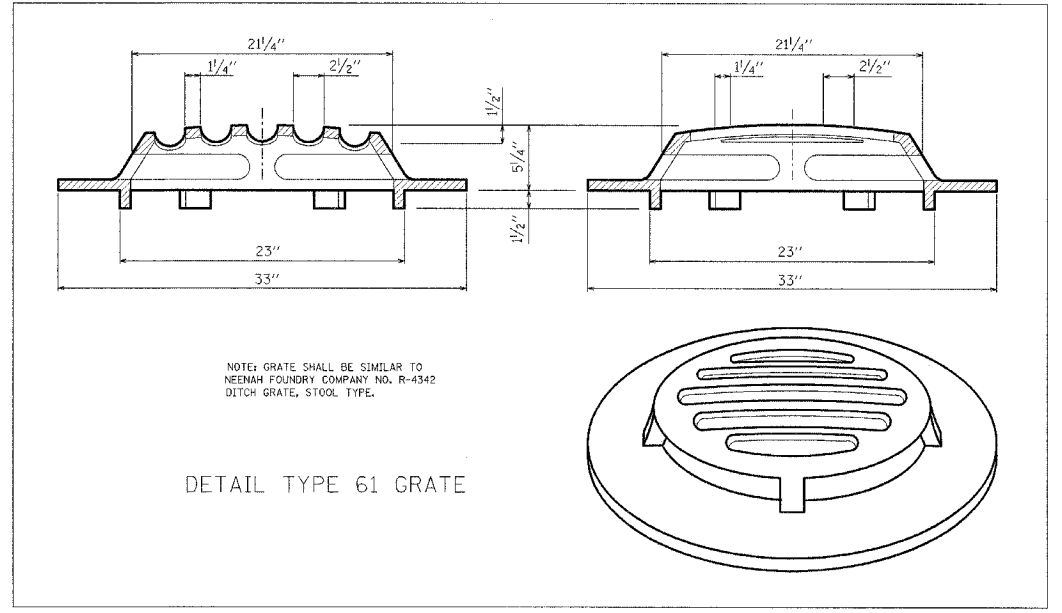
SECTION



**SIGN & REFLECTOR LAYOUT**

INBOUND AND OUTBOUND SIDES TO MATCH.

- STEEL GATE GENERAL NOTES**
1. THE ENTRANCE GATE SHALL BE PAINTED WITH ONE PRIMER COAT AND TWO FINISH COATS. THE PRIMER SHALL BE AN ORGANIC, ZINC RICH, RUST INHIBITING PRIMER. THE FINISH COATS SHALL BE A MINERAL SPIRIT REDUCED FINISHED COAT INTENDED FOR EXTERIOR APPLICATIONS. THE COLOR SHALL MATCH EXISTING FACILITIES. CONTRACTOR SHALL SUBMIT PAINT CHIPS OF FINAL COLOR FOR APPROVAL. ALL EDGES OF HOLES SHALL BE PRIMED AND PAINTED PRIOR TO INSTALLING THE BOLTS. ALTERNATIVE FINISH: INSTEAD OF PAINT, A BAKED-ON ELECTROSTATICALLY APPLIED POLYESTER DRY POWDER COATING MAY BE USED. CONTRACTOR SHALL SUBMIT POWDER COATING SPECIFICATION WITH SHOP DRAWING.
  2. ALL TUBE MEMBERS (TS) SHALL BE COLD FORMED WELDED STRUCTURAL STEEL CONFORMING TO THE LATEST ASTM A00 GRADE B (46 KSI).
  3. STRUCTURAL STEEL SHALL CONFORM TO THE LATEST ASTM A36.
  4. ALL WELDS SHALL BE IN ACCORDANCE WITH AWS D1.1 USING E70 ELECTRODES.
  5. HOLES IN THE STRUCTURAL STEEL AND TUBE MEMBERS SHALL BE 1/8 INCH MAXIMUM LARGER THAN THE BOLT, UNLESS NOTED OTHERWISE.
  6. HINGE PIN HOLES IN THE STRUCTURAL STEEL AND TUBE MEMBERS SHALL BE 1/2 INCH MAXIMUM LARGER THAN THE PIN, UNLESS NOTED OTHERWISE.
  7. GATE LOCK POST SHALL BE ERRECTED AFTER THE GATE IN ORDER TO ACCOUNT FOR THE DEAD LOAD DEFLECTION OF THE GATE AND TO CORRECTLY LOCATE THE HOLE AND PIN ALIGNMENT.
  8. ALL HORIZONTAL AND DIAGONAL MEMBERS SHALL HAVE A 1/2 INCH DIAMETER VENT HOLE DRILLED UNDERNEATH THE MEMBERS AT EACH END.
  9. ALL EXPOSED CORNERS OF PLATES SHALL HAVE A 1/4 INCH RADIUS UNLESS NOTED OTHERWISE.
  10. ALL CONCRETE SHALL BE CLASS SI AND SHALL HAVE A MINIMUM 14-DAY COMPRESSIVE STRENGTH OF 3500 PSI. ALL FOUNDATIONS SHALL BE DRILLED, INSPECTED, AND APPROVED BY THE OWNER'S REPRESENTATIVE PRIOR TO PLACEMENT OF CONCRETE. THE SOIL WAS ASSUMED TO BE A BLACK SLAG OR A LOOSE SAND AND GRAVEL.
  11. RETROFLECTIVE CONSPICUITY SHEETING SHALL BE 3M SCOTCHLITE DIAMOND GRADE SERIES 981 OR EQUAL. CONTRACTOR SHALL PROVIDE A 7-YEAR WARRANTY ON THE RETROFLECTIVE SHEETING.
  12. ALL EXPOSED EDGES SHALL BE GROUND SMOOTH.
  13. ALL STEEL SHALL BE BLAST CLEANED PER SSPC-SP6 COMMERCIAL BLAST CLEANING PRIOR TO APPLICATION OF PRIMER COAT.
  14. SIGNS SHALL BE THRU-BOLTED TO THE GATE AT THE LOCATIONS INDICATED ON THE PLAN WITH STAINLESS STEEL BOLTS. THE HOLES FOR THE BOLTS SHALL BE DRILLED.
  15. CONTRACTOR SHALL LAYOUT LOCK POSTS AND HINGE POSTS FOR LOCATION APPROVED BY THE ENGINEER PRIOR TO FABRICATION.



**DETAIL TYPE 61 GRATE**

NOTE: GRATE SHALL BE SIMILAR TO NEEHAW FOUNDRY COMPANY NO. R-4342 DITCH GRATE, STOOL TYPE.

REVISIONS	
NAME	DATE

ILLINOIS DEPARTMENT OF TRANSPORTATION  
 MISCELLANEOUS DETAILS  
 IDOT / IDNR  
 REDWING SLOUGH STATE NATURAL AREA

SCALE: VERT.      DRAWN BY: JJ  
 HORIZ.              CHECKED BY: PJM  
 DATE: 12/01/06