

F.A.P. RTE.	SECTION	COUNTY	TOTAL SHEETS	SHEET NO.
344	2005-059 TS	LAKE	12	9
STA.		TO STA.		
FED. ROAD DIST. NO.		ILLINOIS FED. AID PROJECT		

CONTRACT NO. 60A45

THE FOLLOWING ITEM SHALL BE REMOVED BY THE CONTRACTOR AND SHALL BE DISPOSED OF THEM OUTSIDE THE RIGHT-OF-WAY AT THEIR EXPENSE. THE SALVAGE VALUE OF THE REMOVED EQUIPMENT SHALL BE REFLECTED IN THE CONTRACT BID PRICE.

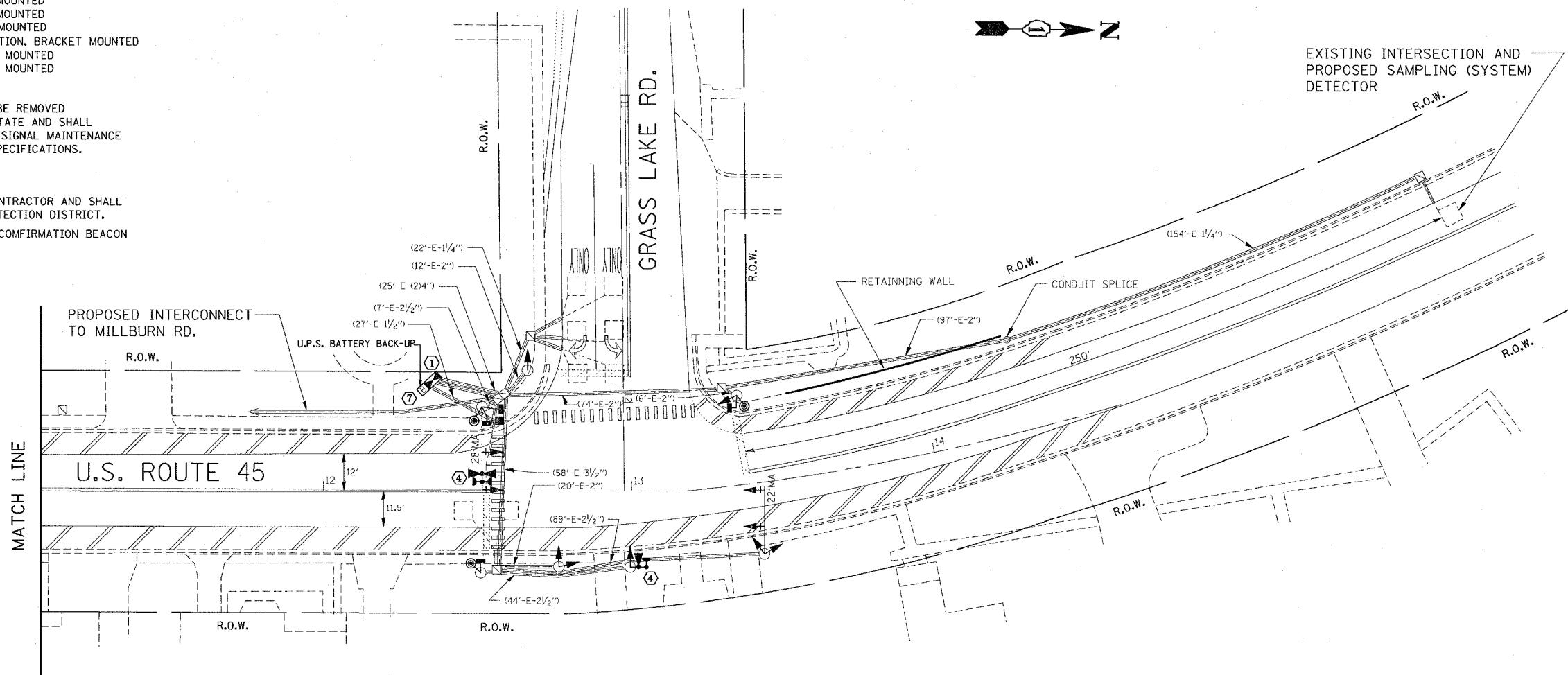
- 2 EACH PEDESTRIAN SIGNAL HEAD, 1-FACE, BRACKET MOUNTED
- 2 EACH PEDESTRIAN PUSH-BUTTON
- 1 EACH SIGNAL HEAD, 1 FACE, 3 SECTION, BRACKET MOUNTED
- 2 EACH SIGNAL HEAD, 1 FACE, 5 SECTION, BRACKET MOUNTED
- 1 EACH SIGNAL HEAD, 2 FACE, 3 SECTION, BRACKET MOUNTED
- 1 EACH SIGNAL HEAD, 2 FACE, 1-3 SECTION, 1-5 SECTION, BRACKET MOUNTED
- 3 EACH SIGNAL HEAD, 1 FACE, 5 SECTION, MAST ARM MOUNTED
- 1 EACH SIGNAL HEAD, 1 FACE, 5 SECTION, MAST ARM MOUNTED
- 1 EACH SERVICE INSTALLATION

THE FOLLOWING EXISTING TRAFFIC SIGNAL EQUIPMENT SHALL BE REMOVED BY THE CONTRACTOR, SHALL REMAIN THE PROPERTY OF THE STATE AND SHALL BE DELIVERED BY THE CONTRACTOR TO THE STATE'S TRAFFIC SIGNAL MAINTENANCE CONTRACTOR'S MAIN FACILITY AS PER THE TRAFFIC SIGNAL SPECIFICATIONS.

- 1 EACH CONTROLLER AND CABINET, COMPLETE

THE EXISTING EVP EQUIPMENT SHALL BE REMOVED BY THE CONTRACTOR AND SHALL BE DELIVERED BY THE CONTRACTOR TO LAKE VILLA FIRE PROTECTION DISTRICT.

- 1 EACH EMERGENCY VEHICLE SYSTEM DETECTOR AND CONFIRMATION BEACON



TRAFFIC SIGNAL LEGEND

PROPOSED		EXISTING	
CONTROLLER CABINET		CONTROLLER CABINET	
RAILROAD CONTROL CABINET		RAILROAD CONTROL CABINET	
SERVICE INSTALLATION, (P) POLE OR (G) GROUND MOUNT		SERVICE INSTALLATION, (P) POLE OR (G) GROUND MOUNT	
TELEPHONE CONNECTION		TELEPHONE CONNECTION	
SIGNAL HEAD		SIGNAL HEAD	
SIGNAL HEAD WITH BACKPLATE		SIGNAL HEAD WITH BACKPLATE	
SIGNAL HEAD OPTICALLY PROGRAMMED		SIGNAL HEAD OPTICALLY PROGRAMMED	
SIGNAL HEAD PEDESTRIAN		SIGNAL HEAD PEDESTRIAN	
ILLUMINATED SIGN "NO LEFT TURN"		ILLUMINATED SIGN "NO LEFT TURN"	
ILLUMINATED SIGN "NO RIGHT TURN"		ILLUMINATED SIGN "NO RIGHT TURN"	
SIGNAL POST		SIGNAL POST	
WOOD POLE		WOOD POLE	
STEEL MAST ARM ASSEMBLY AND POLE		STEEL MAST ARM ASSEMBLY AND POLE	
ALUMINUM MAST ARM ASSEMBLY AND POLE		ALUMINUM MAST ARM ASSEMBLY AND POLE	
STEEL COMBINATION MAST ARM ASSEMBLY AND POLE WITH LUMINAIRE		STEEL COMBINATION MAST ARM ASSEMBLY AND POLE WITH LUMINAIRE	
JUNCTION BOX		JUNCTION BOX	
HANDHOLE		HANDHOLE	
HEAVY DUTY HANDHOLE		HEAVY DUTY HANDHOLE	
DOUBLE HANDHOLE		DOUBLE HANDHOLE	
G.S. CONDUIT IN TRENCH OR PUSHED		G.S. CONDUIT IN TRENCH OR PUSHED	
COMMON TRENCH		COMMON TRENCH	
UNIT DUCT		UNIT DUCT	
PEDESTRIAN PUSHBUTTON DETECTOR		PEDESTRIAN PUSHBUTTON DETECTOR	
DETECTOR LOOP, TYPE I		DETECTOR LOOP, TYPE I	
PREFORMED DETECTOR LOOP		PREFORMED DETECTOR LOOP	
MICROWAVE VEHICLE SENSOR		MICROWAVE VEHICLE SENSOR	
VIDEO DETECTOR		VIDEO DETECTOR	
CLOSED CIRCUIT TV		CLOSED CIRCUIT TV	
EMERGENCY VEHICLE SYSTEM DETECTOR		EMERGENCY VEHICLE SYSTEM DETECTOR	
CONFIRMATION BEACON		CONFIRMATION BEACON	
UNINTERRUPTIBLE POWER SUPPLY (U.P.S.)		UNINTERRUPTIBLE POWER SUPPLY (U.P.S.)	

CONSTRUCTION NOTES:

- ① REMOVE EXISTING CONTROLLER AND CABINET. INSTALL A NEW CONTROLLER IN TYPE IV CABINET. RELOCATE EXISTING EMERGENCY VEHICLE PRIORITY SYSTEM PHASING UNIT TO NEW CONTROLLER CABINET. RELOCATION OF THE EXISTING EMERGENCY PRIORITY SYSTEM SHALL BE INCLUDED IN THE NEW CONTROLLER UNIT PRICE
- ② REMOVE ALL EXISTING SIGNAL HEADS AND PEDESTRIAN HEADS. INSTALL ALL NEW L.E.D. SIGNAL HEADS AND PEDESTRIAN HEADS
- ③ REMOVE EXISTING PEDESTRIAN PUSH-BUTTON. INSTALL NEW PEDESTRIAN PUSH BUTTON.
- ④ REMOVE EXISTING E.V.P. AND 2 CHANNEL LIGHT DETECTOR AMPLIFIER AND REPLACE NEW E.V.P. WITH 4 CHANNEL LIGHT DETECTOR AMPLIFIER
- ⑤ THE CONTRACTOR SHALL BE REQUIRED TO MAINTAIN THE OPERATION OF THE TRAFFIC SIGNALS DURING THE ENTIRE PROJECT
- ⑥ THE EXISTING EVP EQUIPMENT SHALL BE REMOVED BY THE CONTRACTOR AND SHALL BE DELIVERED BY THE CONTRACTOR TO LAKE VILLA FIRE PROTECTION DISTRICT.
- ⑦ INSTALL 1 NEW U.P.S. BATTERY BACK-UP

REVISIONS	
NAME	DATE

ILLINOIS DEPARTMENT OF TRANSPORTATION
**TRAFFIC SIGNAL MODIFICATION
AND REMOVAL PLAN**
U.S. 45 AT GRASS LAKE ROAD

SCALE: 1"=20'
DATE: 1/29/2007

DRAWN BY: SN
DESIGNED BY: SN
CHECKED BY: DAD