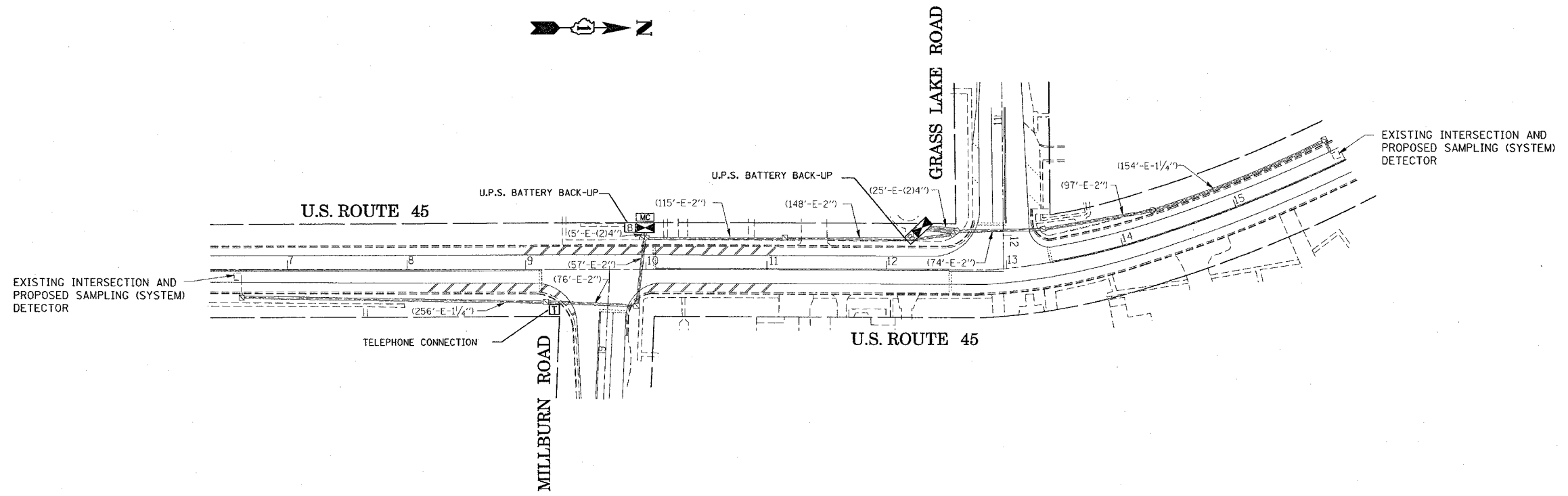


F.A.P. RTE.	SECTION	COUNTY	TOTAL SHEETS	SHEET NO.
344	2005-059 TS	LAKE	12	11
STA.		TO STA.		
FED. ROAD DIST. NO.	ILLINOIS	FED. AID PROJECT		

CONTRACT NO. 60A45



INTERCONNECT PLAN LEGEND

	PROPOSED	EXISTING
CONTROLLER		
HANDHOLE		
HEAVY DUTY HANDHOLE		
DOUBLE HANDHOLE		
G.S. CONDUIT IN TRENCH OR PUSHED		
DETECTOR LOOP		
SYSTEM	S	
INTERSECTION	IP	I
UNIT DUCT	UD	
COMMON TRENCH	CT	
TELEPHONE CONNECTION		
UNINTERRUPTIBLE POWER SUPPLY (U.P.S.)		

REVISIONS	
NAME	DATE

ILLINOIS DEPARTMENT OF TRANSPORTATION

**INTERCONNECT PLANS**

U. S. ROUTE. 45 FROM  
GRASS LAKE ROAD TO MILLBURN ROAD

SCALE: 1" = 50'  
DATE: 1/29/2007

DRAWN BY: SN  
DESIGNED BY: SN  
CHECKED BY: DAD

PLOT DATE = 1/29/2007  
FILE NAME = c:\projects\traffic\10500009\us45egrslk.m32.dgn  
PLOT SCALE = 50.0000' / 1" IN.  
USER NAME = nguyensm

1/29/2007  
c:\projects\traffic\10500009\us45egrslk.m32.dgn  
nguyensm