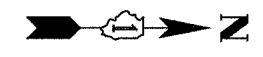
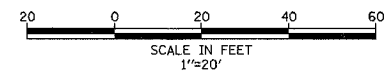
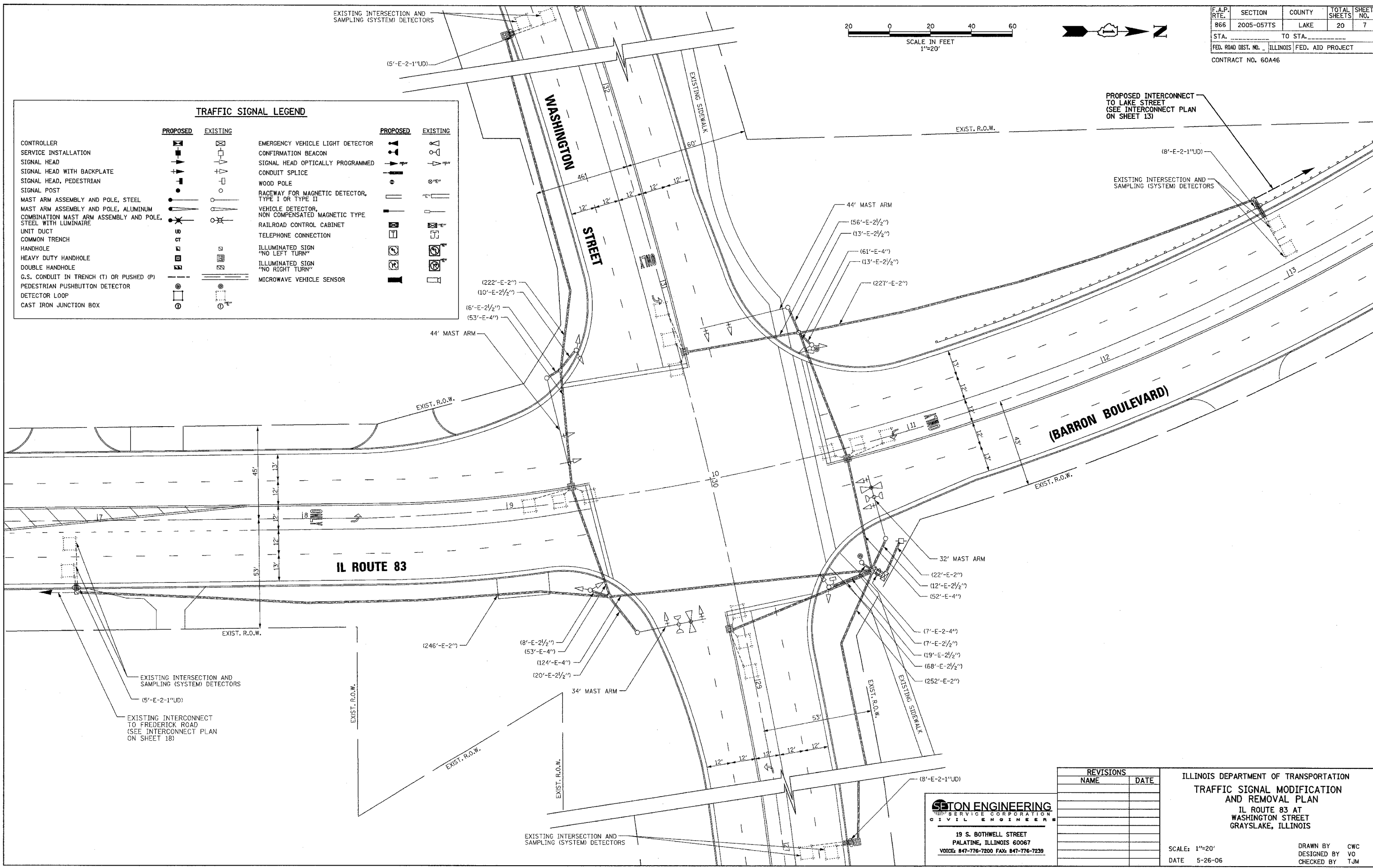


F.A.P. RTE.	SECTION	COUNTY	TOTAL SHEETS	SHEET NO.
866	2005-057TS	LAKE	20	7
STA.	TO STA.			
FED. ROAD DIST. NO. ILLINOIS FED. AID PROJECT				
CONTRACT NO. 60A46				



TRAFFIC SIGNAL LEGEND			
PROPOSED		EXISTING	
CONTROLLER			
SERVICE INSTALLATION			
SIGNAL HEAD			
SIGNAL HEAD WITH BACKPLATE			
SIGNAL HEAD, PEDESTRIAN			
SIGNAL POST			
MAST ARM ASSEMBLY AND POLE, STEEL			
MAST ARM ASSEMBLY AND POLE, ALUMINUM			
COMBINATION MAST ARM ASSEMBLY AND POLE, STEEL WITH LUMINAIRE			
UNIT DUCT			
COMMON TRENCH			
HANDHOLE			
HEAVY DUTY HANDHOLE			
DOUBLE HANDHOLE			
G.S. CONDUIT IN TRENCH (T) OR PUSHED (P)			
PEDESTRIAN PUSHBUTTON DETECTOR			
DETECTOR LOOP			
CAST IRON JUNCTION BOX			
EMERGENCY VEHICLE LIGHT DETECTOR			
CONFIRMATION BEACON			
SIGNAL HEAD OPTICALLY PROGRAMMED			
CONDUIT SPLICE			
WOOD POLE			
RACEWAY FOR MAGNETIC DETECTOR, TYPE I OR TYPE II			
VEHICLE DETECTOR, NON COMPENSATED MAGNETIC TYPE			
RAILROAD CONTROL CABINET			
TELEPHONE CONNECTION			
ILLUMINATED SIGN "NO LEFT TURN"			
ILLUMINATED SIGN "NO RIGHT TURN"			
MICROWAVE VEHICLE SENSOR			



REVISIONS	
NAME	DATE

STON ENGINEERING
MEMBER SERVICE CORPORATION
 CIVIL ENGINEERS
 19 S. BOTHWELL STREET
 PALATINE, ILLINOIS 60067
 VOICE: 847-776-7200 FAX: 847-776-7239

ILLINOIS DEPARTMENT OF TRANSPORTATION
 TRAFFIC SIGNAL MODIFICATION
 AND REMOVAL PLAN
 IL ROUTE 83 AT
 WASHINGTON STREET
 GRAYSLAKE, ILLINOIS

SCALE: 1"=20'
 DATE: 5-26-06
 DRAWN BY: CWC
 DESIGNED BY: VO
 CHECKED BY: TJM