

F.A.P. RTE.	SECTION	COUNTY	TOTAL SHEETS	SHEET NO.
303	130BR-4	BOONE	147	1

148

STATE OF ILLINOIS
DEPARTMENT OF TRANSPORTATION
DIVISION OF HIGHWAYS

**PROPOSED
HIGHWAY PLANS**

FAP ROUTE 303 (IL RTE 173)
SECTION 130BR-4
PROJECT ACBRF-0303 (034)
BOONE COUNTY
BRIDGE REPLACEMENT

C-92-035-07
R 4 E

SQUAD LEADER: PAUL DREZEN (815)284-5519

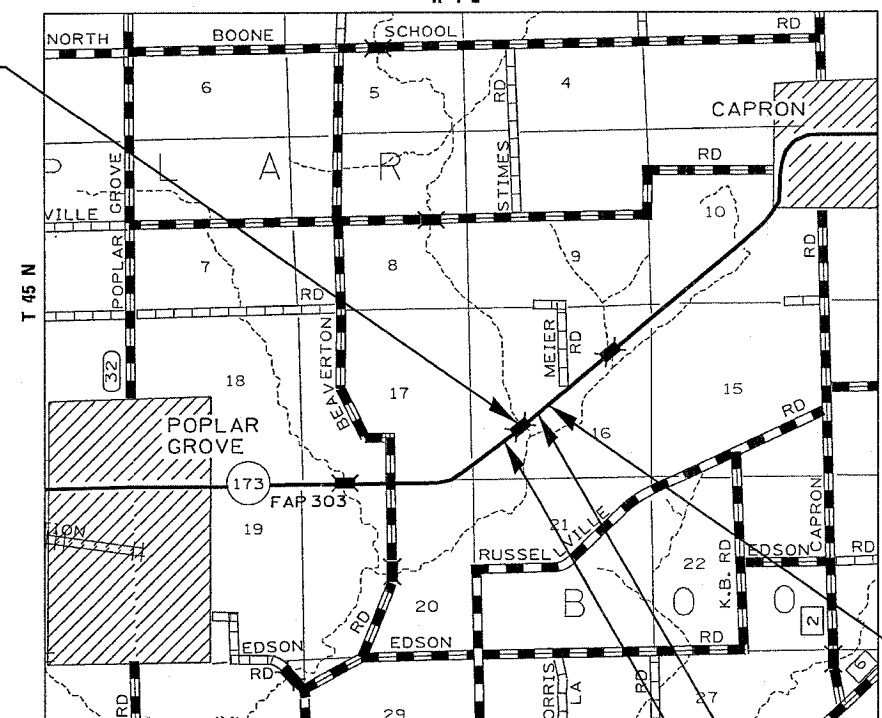
PROJECT ENGINEER: MASOOD AHMAD

FOR INDEX OF SHEETS, SEE SHEET NO. 2
FOR STATE STANDARDS, SEE SHEET NO. 2

DESIGN DESIGNATION
0680(28) ARTERIAL 3.81(FD-20)



IL RTE 173 BRIDGE OVER BEAVER CREEK
EXISTING SN-004-0009
PROPOSED SN-004-0020
STA 439+22.96 - STA 440+53.04
BEAVER CREEK CHANNEL REALIGNMENT
STA 999+50 - STA 1002+25

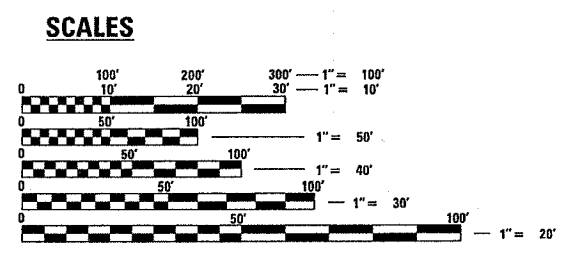


**IL RTE 173
IMPROVEMENT ENDS
STA 450+00**

**IL RTE 173
SECTION ENDS
STA 446+96**

**IL RTE 173
IMPROVEMENT BEGINS STA 429+00
SECTION BEGINS STA 432+96**

GROSS LENGTH OF PROJECT = 1400 LIN. FT = 0.265 MI.
NET LENGTH = 1400 LIN. FT. = 0.265 MI.



FULL SIZE PLANS HAVE BEEN PREPARED USING STANDARD ENGINEERING SCALES. REDUCED SIZED PLANS WILL NOT CONFORM TO STANDARD SCALES. IN MAKING MEASUREMENTS ON REDUCED PLANS, THE ABOVE SCALES MAY BE USED.

J.U.L.I.E.
JOINT UTILITY LOCATION INFORMATION FOR EXCAVATION
1-800-892-0123
BOONE TOWNSHIP
SECTION 16
CONTRACT NO. 64800

STATE OF ILLINOIS
DEPARTMENT OF TRANSPORTATION
DIVISION OF HIGHWAYS

SUBMITTED December 15, 2006

Joseph E. Carr
DEPUTY DIRECTOR OF HIGHWAYS, REGION ENGINEER

March 23, 2007
Eric E. Larson
ENGINEER OF DESIGN AND ENVIRONMENT

March 23, 2007
Milton R. Sussler
DIRECTOR OF HIGHWAYS, CHIEF ENGINEER

PRINTED BY THE AUTHORITY
OF THE STATE OF ILLINOIS

REGION 2, DISTRICT 2
DIXON