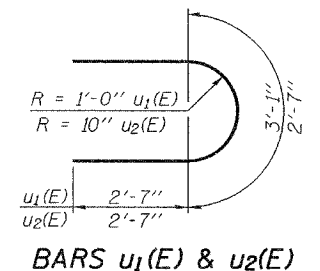
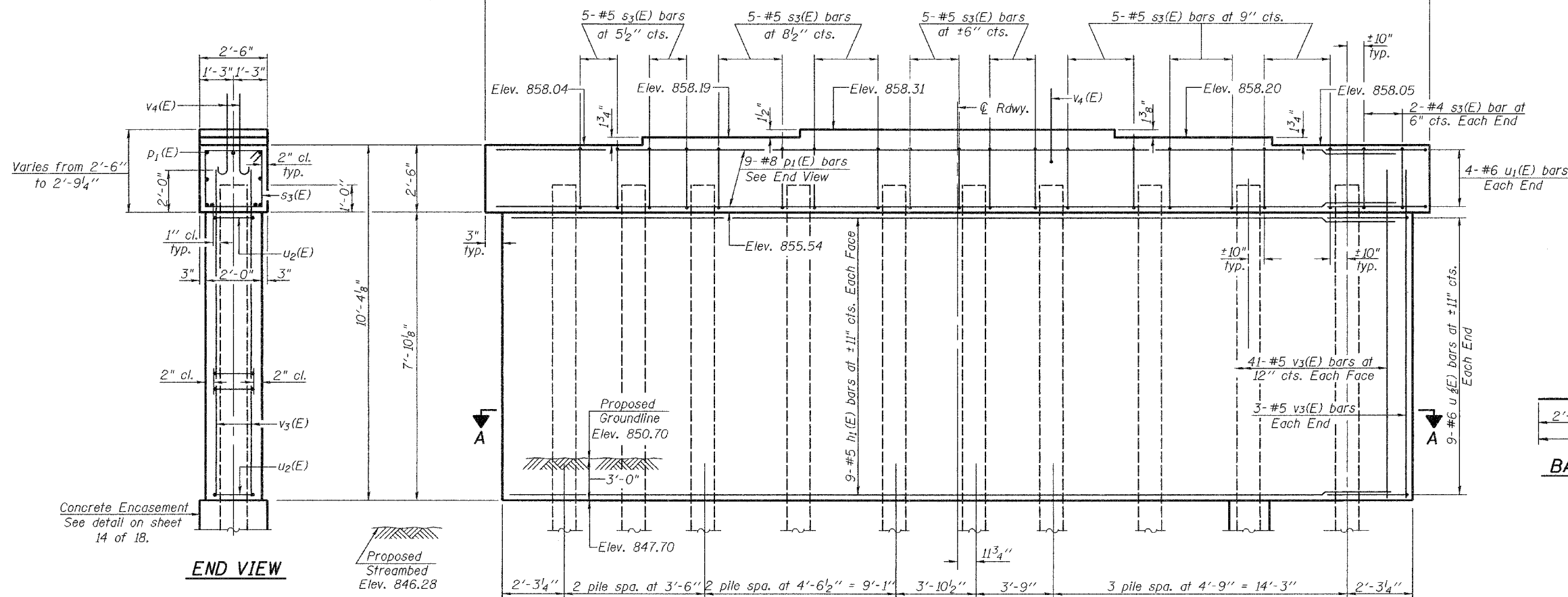
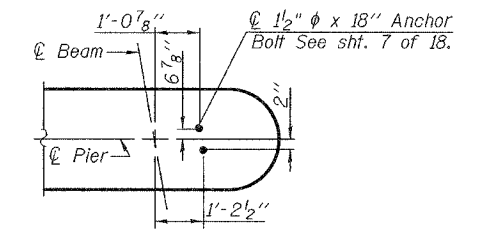
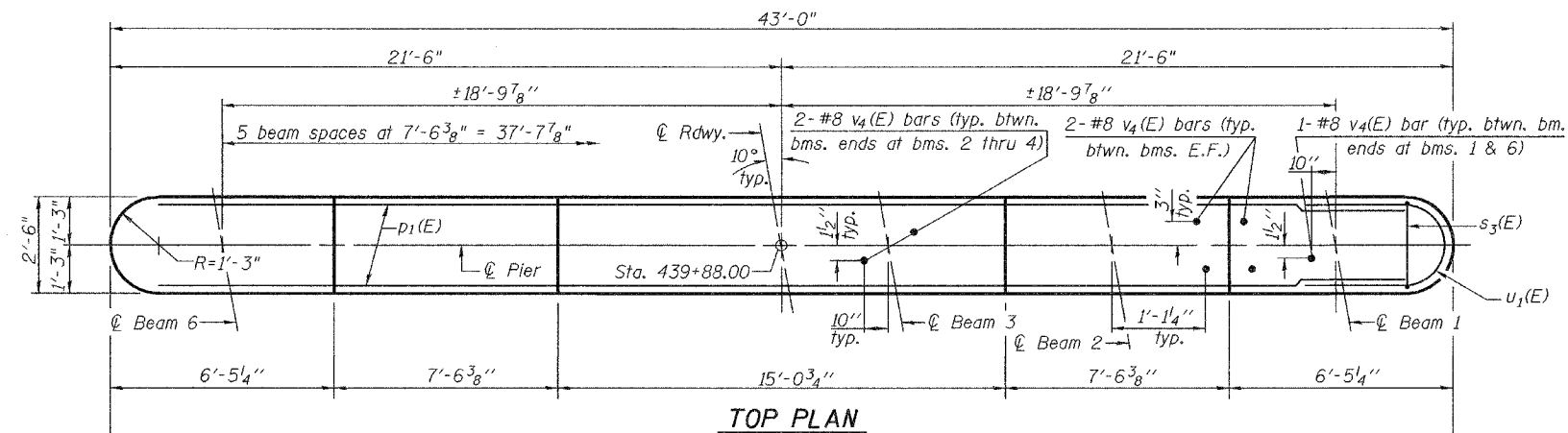


STATE OF ILLINOIS
DEPARTMENT OF TRANSPORTATION

ROUTE NO.	SECTION	COUNTY	TOTAL SHEETS	SHEET NO.	SHEET NO. 13
F.A.P. 303	130 BR-4	BOONE		50	18 SHEETS
FED. ROAD DIST. NO. 7	ILLINOIS	FED. AID PROJECT			

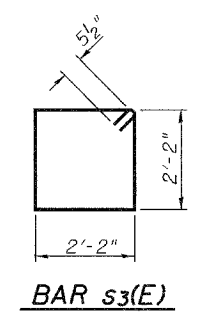
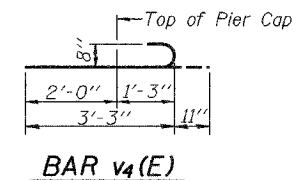
Contract #64800

Notes: Pour steps monolithically with cap.
Space reinforcement in cap to miss anchor bolts.
For Plan view of existing and proposed piles.
See sheet 2 of 18.



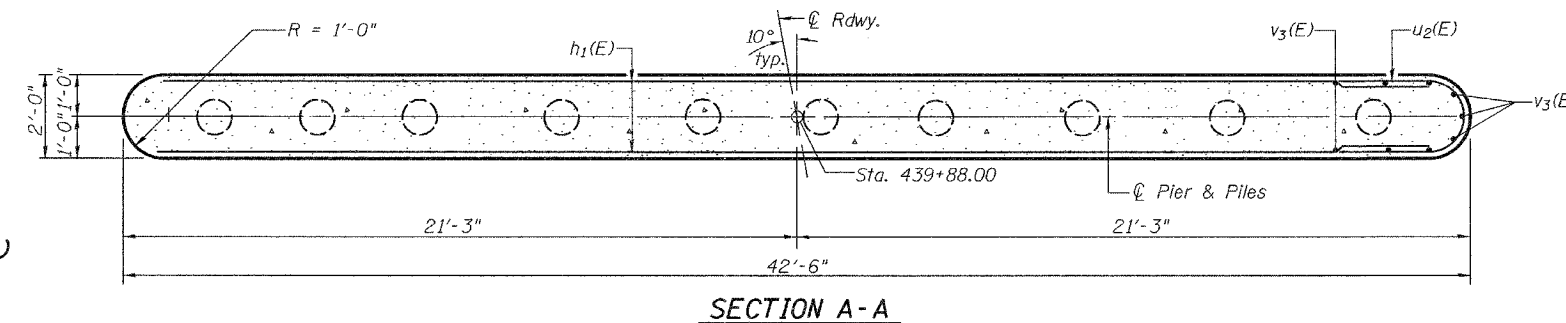
BILL OF MATERIAL

Bar No.	Size	Length	Shape
h1(E)	#5	40'-6"	—
p1(E)	#8	40'-6"	—
s3(E)	#5	9'-7"	□
u1(E)	#6	8'-3"	U
u2(E)	#6	7'-9"	U
v3(E)	#5	9'-8"	—
v4(E)	#8	4'-2"	—
Concrete Structures	Cu. Yd.	36.9	
Reinforcement Bars, Epoxy Coated	Pound	3750	
Furnishing Metal Shell Piles, 14"	Foot	477	
Structure Excavation	Cu. Yd.	31	
Test Pile Metal Shells	Each	1	
Driving Piles	Foot	477	
Underwater Structure Excavation Protection - Location 1	Each	1	
Concrete Encasement	Cu. Yd.	10.0	



PILE DATA

Pile Type & Size: Metal Shell 14" φ x 5/16" Wall
Nominal Required Bearing: = 510 kips
Allowable Resistance Available: = 159 kips
Est. Length: 53'
No. of Production Piles: 9
No. of Test Piles: 1



PIER
F.A.P. ROUTE 303 - SECTION 130BR-4
BOONE COUNTY
STATION 439+88.00
STRUCTURE NO. 004-0020

DESIGNED	Fesseha Teklehaimanot
CHECKED	Stephen Ryan
DRAWN	R. Sommer
CHECKED	FT/SMR

EXAMINED	March 9, 2007	Thomas J. Domagalaki
PASSED	Ralph E. Anderson	ENGINEER OF BRIDGES AND STRUCTURES