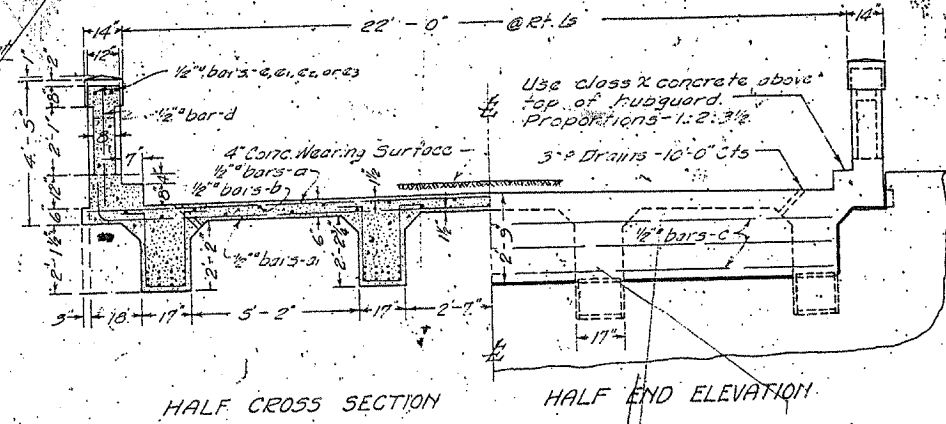
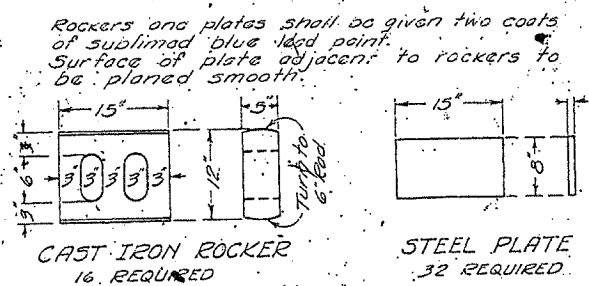
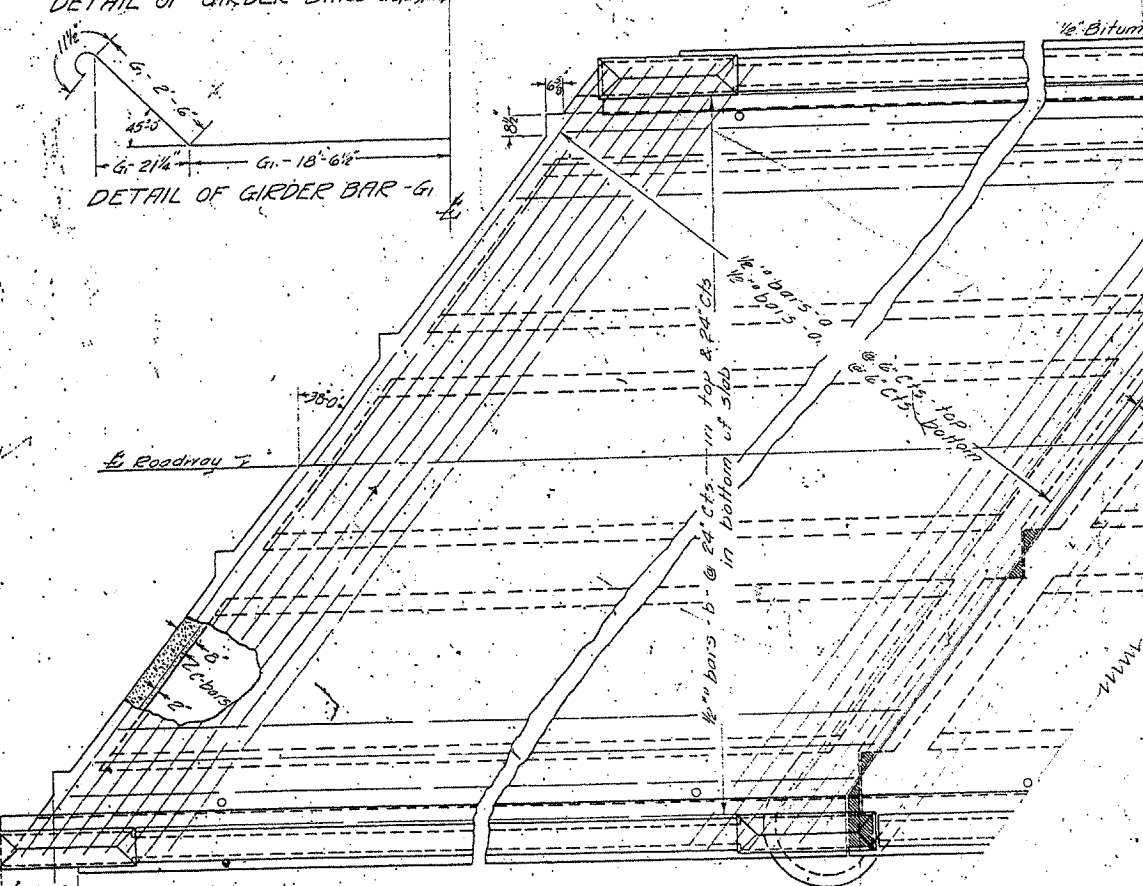
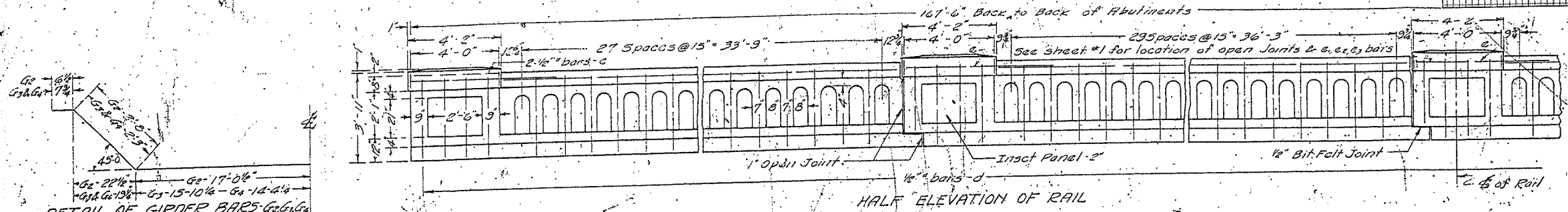


STATE OF ILLINOIS
DEPARTMENT OF PUBLIC WORKS & BUILDINGS
DIVISION OF HIGHWAYS

ROAD ISSUE ROUTE NO.	COUNTY	SEC.	TOTAL SHEETS	SHEET NO.
173	Boone	130-B	56	51

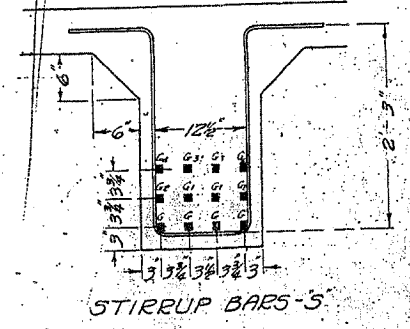
CONTRACT NO. 64800

F.A.E. RTE.	SECTION	COUNTY	TOTAL SHEETS	SHEET NO.
303	130RR-4	BOONE	56	51
STA. 429+00.0000		TO STA. 430+00.0000		
FED. ROAD DIST. NO.		ILLINOIS FED. AID PROJECT		



BILL OF MATERIAL - 4 SPANS

Bar	No.	Size	Length	Bar	No.	Size	Length
a	264	1/2"	30'-6"	G	64	1 1/2"	41'-6"
a1	264	1/2"	31'-6"	G1	32	1 1/2"	44'-0"
b	184	1/2"	21'-6"	G2	32	1"	40'-6"
c	24	1/2"	26'-6"	G2	32	1"	34'-6"
d	264	1/2"	3'-6"	S	704	1/2"	7'-9"
e	20	1/2"	6'-0"				
e1	16	1/2"	12'-0"				
e2	16	1/2"	11'-0"				
e3	16	1/2"	13'-0"				
							181.6
Class A Concrete - Cu Yds.							24.7
Class X Concrete - Cu Yds.							54730
Reinforcing Steel - Lbs.							2280
16-C.I. Rockers - Lbs.							1080
32 Steel Plates - Lbs.							1
Name Plate							



STANDARD: COMPUTED, CHECKED, DRAWN, ASSEMBLED, SPECIAL

EXAMINED: March 27, 1928

APPROVED: [Signature]

Class A concrete to be used below top of subguard. Proportions - 1:2 1/2:4.

BEAVER CREEK
S.B.T. ROUTE 173 SECTION 130-B
BOONE COUNTY
STATION 310+00