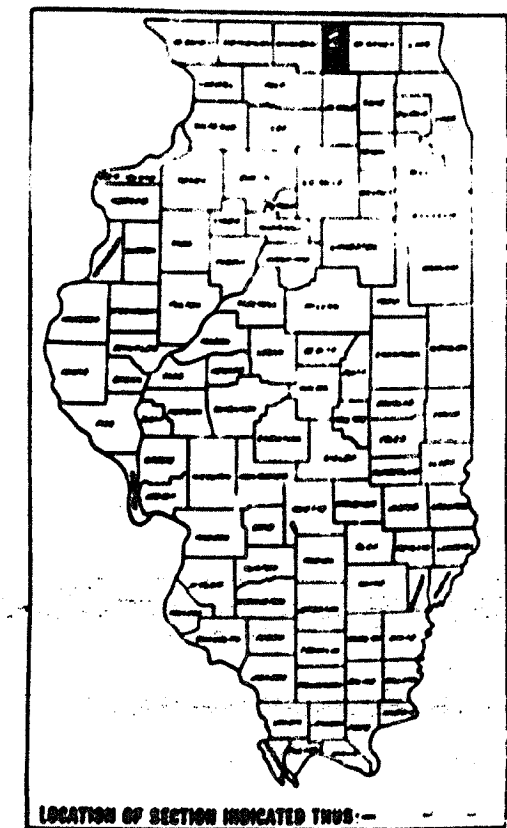


STATE OF ILLINOIS
DEPARTMENT OF TRANSPORTATION
DIVISION OF HIGHWAYS
PLANS FOR PROPOSED
FEDERAL AID HIGHWAY

FA 303-1 130B-1 14 61
 RF-291(4)

P-92-052-75 (007)



INDEX OF SHEETS

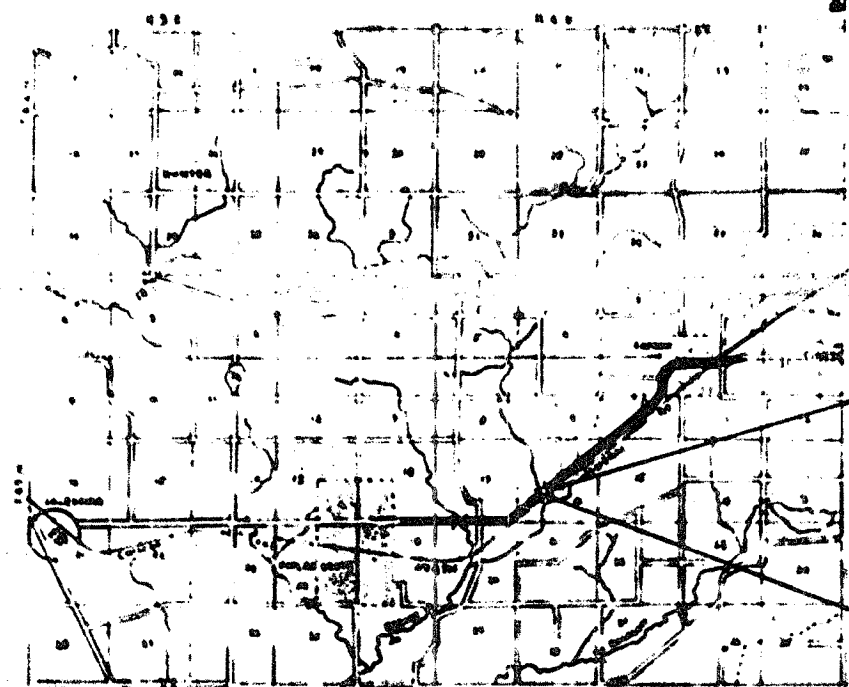
- 1 Cover Sheet & Index of Sheets
- 2 Typical Sections, General Notes & Summary of Quantities
- 3 Beaver Creek Structure - General Plan & Elevation
- 4 Superstructure
- 5 - 6 Beams
- 7 Superstructure Details
- 8 Steel Rating Type T
- 9-10 West Abutment
- 11-12 East Abutment
- 13 Plans
- 14 Barrips

- STANDARDS**
- 2113-1 Name Plate for Bridge
 - 2118-4 Pavement Fabric, Type A and Type B
 - 2230-6 Steel Plate Beam Guardrail
 - 2231-3 Typical Application of Steel Plate Beam Guardrail
 - 2239-6 Widening and Shoulders for Pavement Resurfacing
 - 2290-4 Typical Application of Traffic Control Devices
 - 2295-4 Usage of Traffic Control Devices
 - 2300-1 Flagman Traffic Control Signs
 - 2302-3 Typical Application of Traffic Control Devices
 - 2303-4
 - 2305-3
 - 2306-4
 - 2307-4
 - 2309-3

SCALES

PLAN	1" = 1000'	1" = 1000'
PROFILES, VERT.	1" = 100'	1" = 100'
PROFILES, HORIZ.	1" = 100'	1" = 100'
PROFILES, VERT.	1" = 100'	1" = 100'
PROFILES, HORIZ.	1" = 100'	1" = 100'

FA ROUTE 202 (ILL. ROUTE 173)
SECTION 130B-1R
PROJECT RF-291(4)
BOONE COUNTY
C-92-052-75



PROJECT RF-291(4)
SECTION 130B-1R
BEGINS STA. 309+16.25
 Section 130B-1R includes the removal of the existing superstructure and replacement with present proposed 21" deck beams and other related work necessary to complete this section.

PROJECT RF-291(4)
SECTION 130B-1R
ENDS STA. 310+83.75

STATE OF ILLINOIS
 DEPARTMENT OF TRANSPORTATION

Mark R. ...
D.E.S. ...
April 1, 1975
...
...

GROSS LENGTH OF IMPROVEMENT: 1875 FT. = 0.032 MILES
 NET LENGTH OF IMPROVEMENT: 1675 FT. = 0.032 MILES
 NET LENGTH OF PROJECT 1875 FT. = 0.032 MILES

REVISED SET
6-25-75

Rev. Set 6-5-75