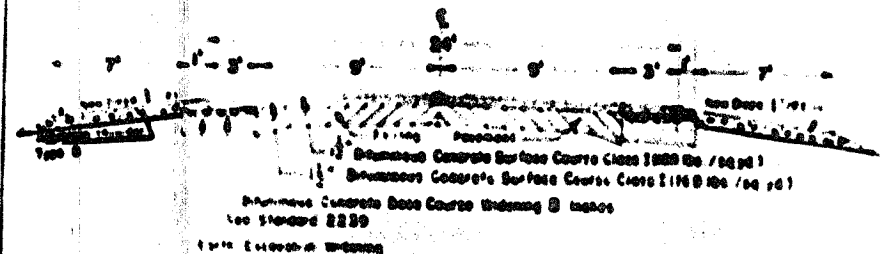


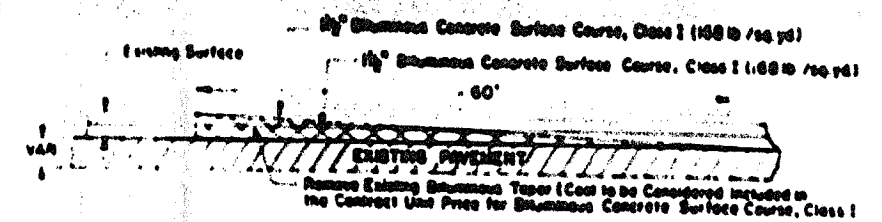
TYPICAL SECTIONS

NO SCALE

MAIN LINE



BUTT JOINT



GENERAL NOTES

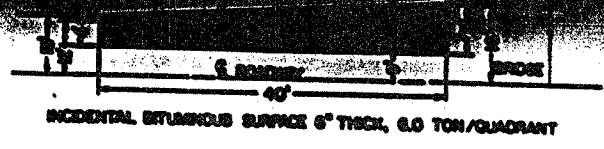
ENTIRE SECTION INSPECTED AND APPROVED AS TO POLICY
 DATE 3/21/71
 DISTRICT ENGINEER R. P. SANTH

THE CONTRACTOR SHALL ERECT 12" BARRICADES CONFORMING TO STANDARDS 2298 & 2299

AT THE LOCATIONS WHERE EXCAVATION QUANTITIES ON THE PLANS ARE INDICATED AS HAVING BEEN ESTIMATED, THE ENGINEER WILL OBTAIN ORIGINAL AND FINAL CROSS SECTIONS TO DETERMINE PAY QUANTITIES.

WHERE SECTION OR SUBSECTION MONUMENTS ARE ENCOUNTERED, THE ENGINEER SHALL BE NOTIFIED BEFORE SUCH MONUMENTS ARE REMOVED. THE CONTRACTOR SHALL PROTECT AND CAREFULLY PRESERVE ALL PROPERTY, MARKS, AND MONUMENTS UNTIL THE OWNER, AN AUTHORIZED SURVEYOR OR AGENT HAS WITNESSED OR OTHERWISE REFERENCED THEIR LOCATION.

ALL MATERIALS AND EQUIPMENT TO BE USED IN THE CONSTRUCTION OF THE PROJECT SHALL BE STORED AND MAINTAINED AT ALL TIMES IN ACCORDANCE WITH THE PROPERTY OF THE DISTRICT.



SUMMARY OF QUANTITIES

CODE NO.	ITEM	UNIT	QUANTITY
300004	PORTLAND CEMENT MORTAR FINISH COURSE	LN FT	188
300005	PORTLAND CEMENT MORTAR FINISH COURSE	CU YD	14.5
300006	BITUMINOUS CONCRETE BASE COURSE WIDENING, 8 INCHES	SQ YD	142
300007	BITUMINOUS CONCRETE SURFACE COURSE, CLASS I	TON	180
400001	INCIDENTAL BITUMINOUS SURFACING	TON	24
400004	PROTECTIVE COAT	TON	24
501025	REMOVAL OF EXISTING SUPERSTRUCTURES	SQ YD	56
501027	CONCRETE REMOVAL	EACH	1
501028	EXPANSION BOLTS 3/4 INCH	CU YD	22.7
501029	CLASS X CONCRETE	EACH	227
501030	PRECAST PRESTRESSED CONCRETE DECK BEAMS (21" DEPTH)	CU YD	178.0
501031	FURNISHING AND ERECTING STRUCTURAL STEEL	POUND	8643
501032	STEEL RAILING, TYPE T	LN FT	10380
512001	REINFORCEMENT BARS	POUND	348
512002	FURNISHING UNTREATED PILES UP TO 30 FEET	LN FT	14070
512003	DRIVING TREATED PILES	LN FT	800
512004	DRIVING CONCRETE PILES	LN FT	215
512005	DRIVING STEEL PILES	LN FT	215
512006	TRUCK MIX CONCRETE	EACH	1
512007	PAVEMENT	EACH	1
620001	PAYMENT REMOVAL AND PORTLAND CEMENT CONCRETE REPLACEMENT, TYPE 2, 18 INCH	SQ YD	15
620002	STEEL PLATE BEAM GUARD RAIL, SINGLE RAIL	LN FT	300
620003	TEMPORARY GUARD RAIL	LN FT	175
640001	ENGINEER'S FIELD OFFICE, TYPE A	EACH	1
X04041	WATERPROOFING MEMBRANE SYSTEM	SQ YD	725
X60001	TERMINAL SECTION, SINGLE RAIL	EACH	4
X21014	TRAFFIC CONTROL AND PROTECTION STD 2309	EACH	1
X21101	PREFORMED JOINT SEALER 2 1/2"	LN FT	156
X30001	STRUCTURE EXCAVATION	CU YD	890
SUMMARY OF QUANTITIES			
300007	BITUMINOUS CONCRETE BASE COURSE WIDENING, 8 INCH	SQ YD	142
	Location		
	L&R Station 380+14.25-380+14.25		72.2
	L&R Station 310+01.75-310+01.75		72.2
	Total		144.4
400001	INCIDENTAL BITUMINOUS SURFACING	TON	24
	Location		
	Station 380+14.25-380+14.25		12.5
	Station 310+01.75-310+01.75		11.5
	Total		24
400004	PROTECTIVE COAT	TON	24
	Location		
	Station 380+14.25-380+14.25		12.5
	Station 310+01.75-310+01.75		11.5
	Total		24
501025	REMOVAL OF EXISTING SUPERSTRUCTURES	SQ YD	56
	Location		
	Station 380+14.25-380+14.25		56
	Station 310+01.75-310+01.75		0
	Total		56
501027	CONCRETE REMOVAL	EACH	1
	Location		
	Station 380+14.25-380+14.25		1
	Station 310+01.75-310+01.75		0
	Total		1
501028	EXPANSION BOLTS 3/4 INCH	CU YD	22.7
	Location		
	Station 380+14.25-380+14.25		22.7
	Station 310+01.75-310+01.75		0
	Total		22.7
501029	CLASS X CONCRETE	EACH	227
	Location		
	Station 380+14.25-380+14.25		227
	Station 310+01.75-310+01.75		0
	Total		227
501030	PRECAST PRESTRESSED CONCRETE DECK BEAMS (21" DEPTH)	CU YD	178.0
	Location		
	Station 380+14.25-380+14.25		178.0
	Station 310+01.75-310+01.75		0
	Total		178.0
501031	FURNISHING AND ERECTING STRUCTURAL STEEL	POUND	8643
	Location		
	Station 380+14.25-380+14.25		8643
	Station 310+01.75-310+01.75		0
	Total		8643
501032	STEEL RAILING, TYPE T	LN FT	10380
	Location		
	Station 380+14.25-380+14.25		10380
	Station 310+01.75-310+01.75		0
	Total		10380
512001	REINFORCEMENT BARS	POUND	348
	Location		
	Station 380+14.25-380+14.25		348
	Station 310+01.75-310+01.75		0
	Total		348
512002	FURNISHING UNTREATED PILES UP TO 30 FEET	LN FT	14070
	Location		
	Station 380+14.25-380+14.25		14070
	Station 310+01.75-310+01.75		0
	Total		14070
512003	DRIVING TREATED PILES	LN FT	800
	Location		
	Station 380+14.25-380+14.25		800
	Station 310+01.75-310+01.75		0
	Total		800
512004	DRIVING CONCRETE PILES	LN FT	215
	Location		
	Station 380+14.25-380+14.25		215
	Station 310+01.75-310+01.75		0
	Total		215
512005	DRIVING STEEL PILES	LN FT	215
	Location		
	Station 380+14.25-380+14.25		215
	Station 310+01.75-310+01.75		0
	Total		215
512006	TRUCK MIX CONCRETE	EACH	1
	Location		
	Station 380+14.25-380+14.25		1
	Station 310+01.75-310+01.75		0
	Total		1
512007	PAVEMENT	EACH	1
	Location		
	Station 380+14.25-380+14.25		1
	Station 310+01.75-310+01.75		0
	Total		1
620001	PAYMENT REMOVAL AND PORTLAND CEMENT CONCRETE REPLACEMENT, TYPE 2, 18 INCH	SQ YD	15
	Location		
	Station 380+14.25-380+14.25		15
	Station 310+01.75-310+01.75		0
	Total		15
620002	STEEL PLATE BEAM GUARD RAIL, SINGLE RAIL	LN FT	300
	Location		
	Station 380+14.25-380+14.25		300
	Station 310+01.75-310+01.75		0
	Total		300
620003	TEMPORARY GUARD RAIL	LN FT	175
	Location		
	Station 380+14.25-380+14.25		175
	Station 310+01.75-310+01.75		0
	Total		175
640001	ENGINEER'S FIELD OFFICE, TYPE A	EACH	1
	Location		
	Station 380+14.25-380+14.25		1
	Station 310+01.75-310+01.75		0
	Total		1
X04041	WATERPROOFING MEMBRANE SYSTEM	SQ YD	725
	Location		
	Station 380+14.25-380+14.25		725
	Station 310+01.75-310+01.75		0
	Total		725
X60001	TERMINAL SECTION, SINGLE RAIL	EACH	4
	Location		
	Station 380+14.25-380+14.25		4
	Station 310+01.75-310+01.75		0
	Total		4
X21014	TRAFFIC CONTROL AND PROTECTION STD 2309	EACH	1
	Location		
	Station 380+14.25-380+14.25		1
	Station 310+01.75-310+01.75		0
	Total		1
X21101	PREFORMED JOINT SEALER 2 1/2"	LN FT	156
	Location		
	Station 380+14.25-380+14.25		156
	Station 310+01.75-310+01.75		0
	Total		156
X30001	STRUCTURE EXCAVATION	CU YD	890
	Location		
	Station 380+14.25-380+14.25		890
	Station 310+01.75-310+01.75		0
	Total		890

PA 202,000-09 ROONE 14 8

DISTRICT NO. 2
 Dixon
 R. P. SANTH
 Date 3-21-71
 Scale