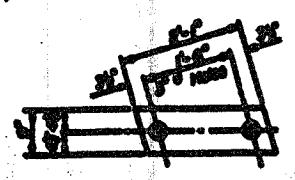


STATE OF ILLINOIS
DEPARTMENT OF TRANSPORTATION

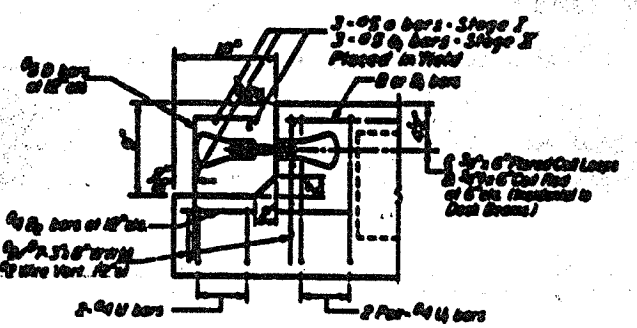
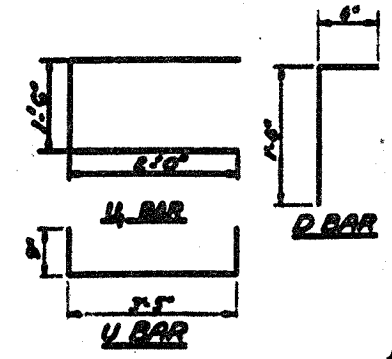
NO.	REV.	DATE	BY	CHK.	APP.	SHEET NO. 7
1						12 SHEETS



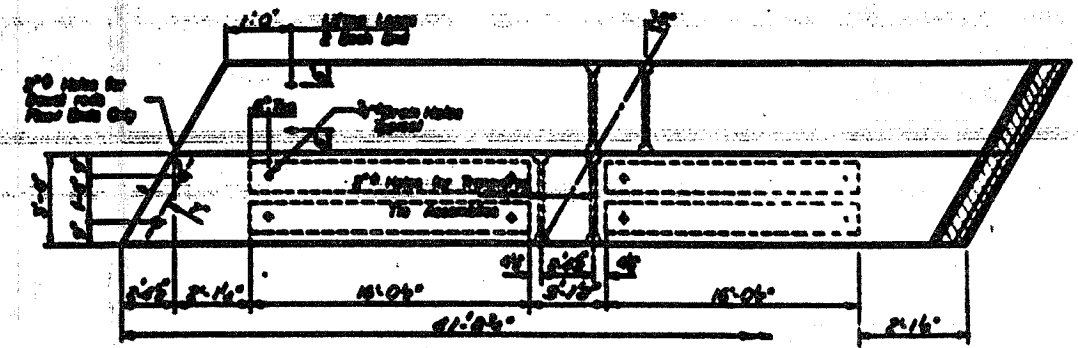
BEAM BEARING PAD



SPACED ASBESTOS BEARING PAD



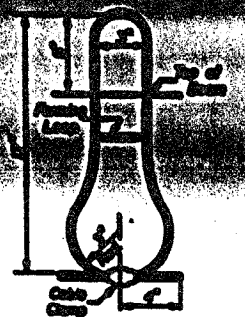
END OF BEAM (EXR END)
Dimensions are at right angles



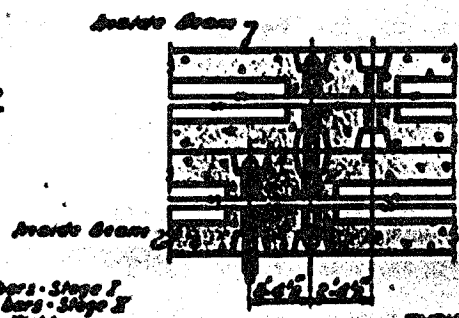
PLAN
Interior Beams



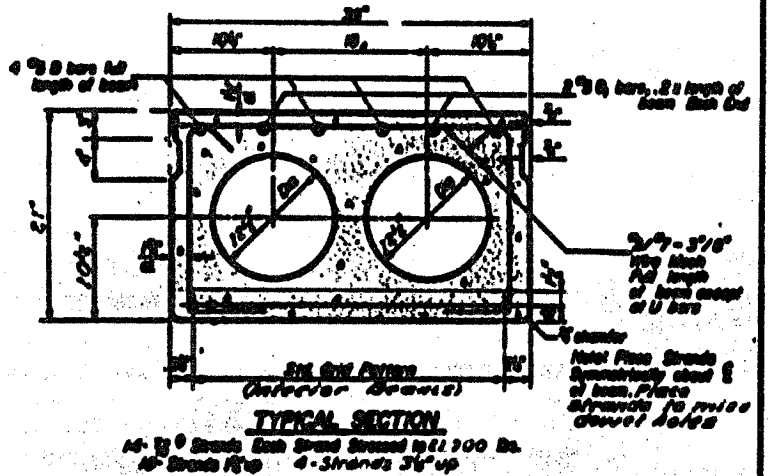
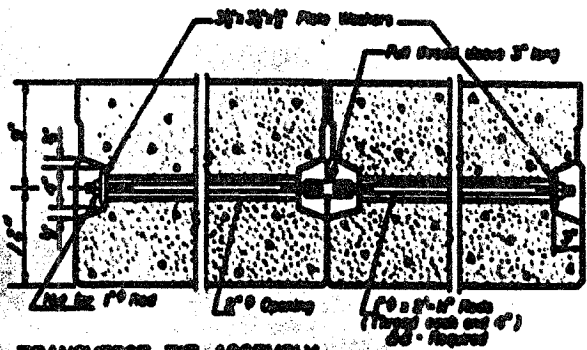
END PLAN
Wood Deck



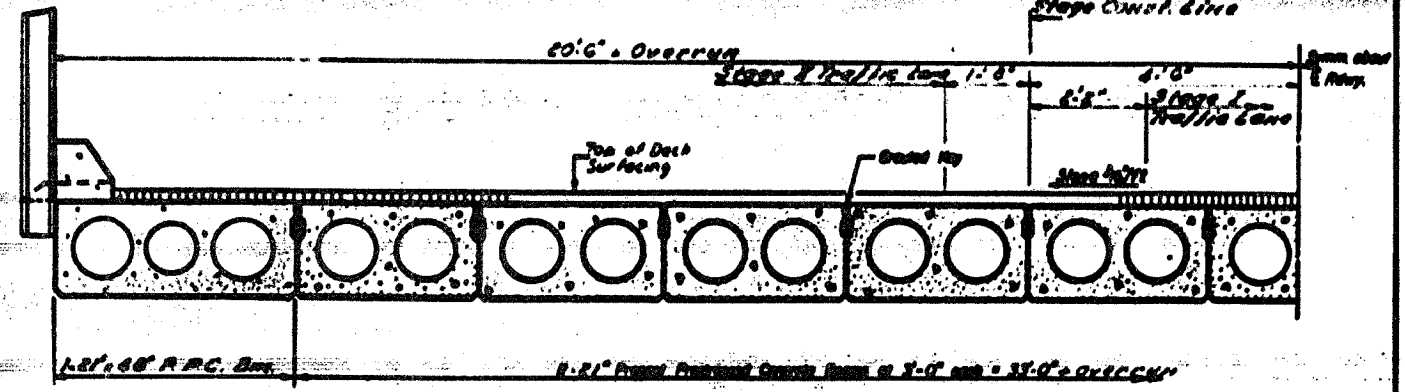
LIFTING LOOP DETAIL



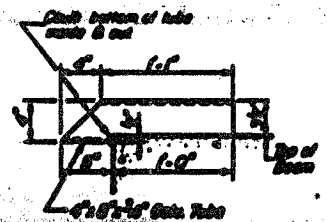
TYPICAL TRANSVERSE TIE ASSEMBLY
(Interior Beams)



TYPICAL SECTION
(Interior Beams)



HALF CROSS SECTION
(Loading Wheel)



DRAIN DETAIL
(Cool of drainage installation)

GENERAL NOTES:
 Reinforcing steel shall be conforming high strength, stress-relieved 7-bar steel, Grade 70. The nominal diameter shall be 1/2" and the nominal cross-sectional area shall be 0.15 sq. in. Lifting loops shall be fabricated from 1/2" diameter, Grade 70 steel and shall have a minimum ultimate tensile strength of 20,000 lb. The 7/8" hole in the reinforcement assembly shall be tapered to a snug fit and the bearing surface shall be finished to a smooth surface. The hole shall be filled with a non-shrink grout. The reinforcement shall be placed with a 1/2" gap between the bars and a 1/2" gap between the bars and the concrete. The reinforcement shall be placed in accordance with the provisions of the American Institute of Steel Construction, Inc. Manual of Steel Construction, 8th Edition, Part 1, Section 13.01. The reinforcement shall be placed in accordance with the provisions of the American Institute of Steel Construction, Inc. Manual of Steel Construction, 8th Edition, Part 1, Section 13.01. The reinforcement shall be placed in accordance with the provisions of the American Institute of Steel Construction, Inc. Manual of Steel Construction, 8th Edition, Part 1, Section 13.01.

BILL OF MATERIAL

Item	Qty	Unit	Location	Notes
Reinforcing Steel				
Concrete				
Asbestos				
Stirrups				
U-bars				
D-bars				
Asphalt				
Grout				

Checked by: [Signature]
 Prepared by: [Signature]
 Approved by: [Signature]

INTERIOR BEAM
 SUBSTRUCTURE
 FR. 22 FOR 346100-18
 ILLINOIS COUNTY
 STATION 31.0000