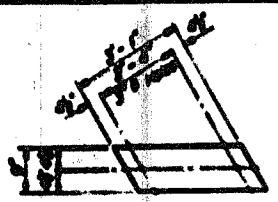
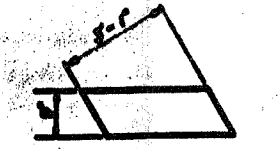


STATE OF ILLINOIS
 DEPARTMENT OF TRANSPORTATION

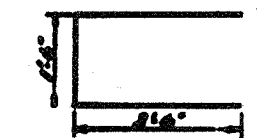
Sheet No.	147	of	148
Scale	1" = 1'-0"	Sheet	14
Project	130BR-4	Sheet	6



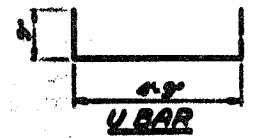
FABRIC BEARING PAD



GRADED ASBESTOS BEARING PAD



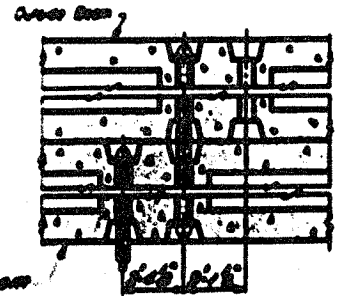
L BAR



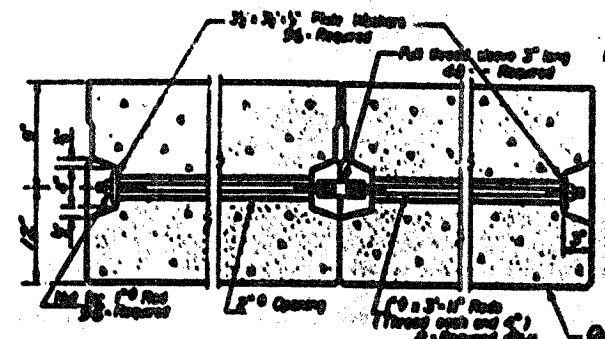
U BAR



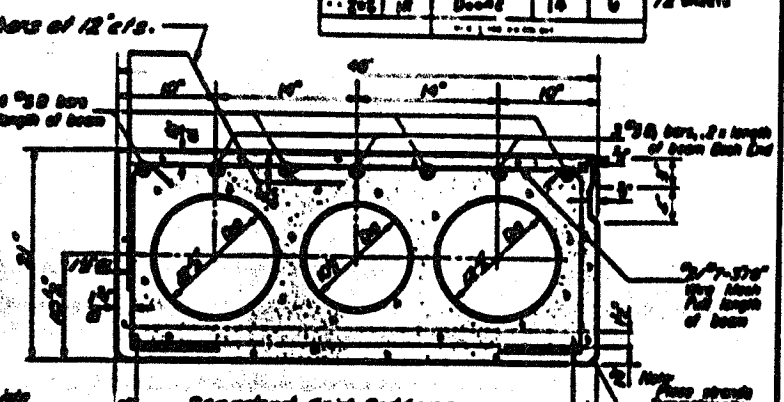
D BAR



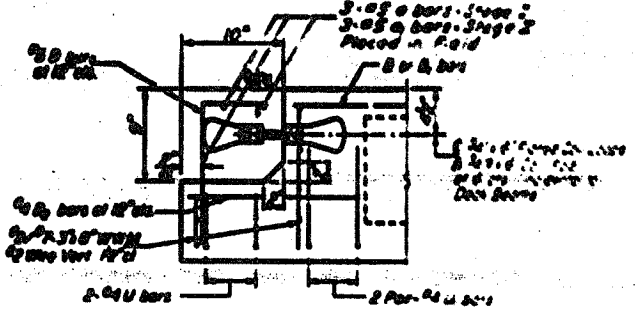
Interior Beam



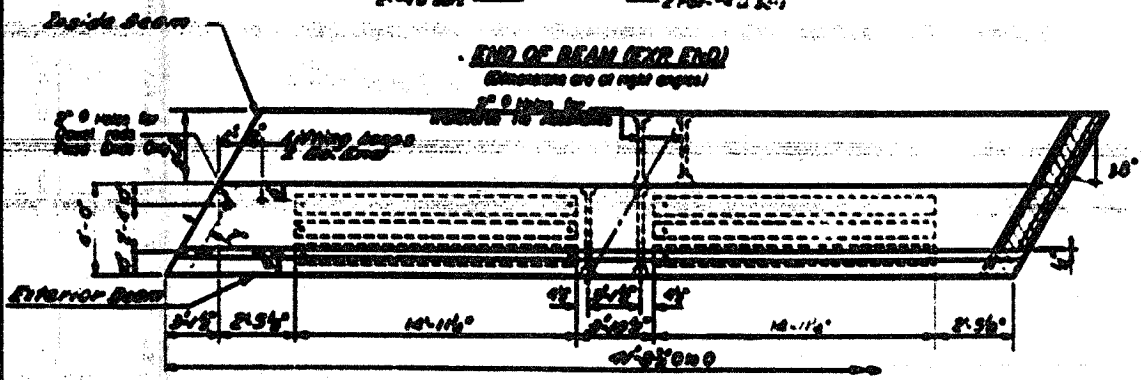
TYPICAL TRANSVERSE TIE ASSEMBLY



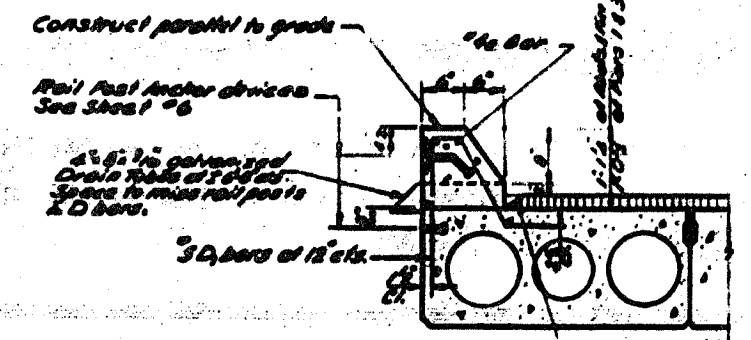
TYPICAL SECTION



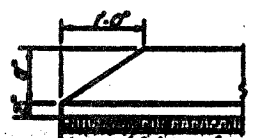
END OF BEAM (EXT. END)
 (Dimensions are at right angles)



PLAN
 (Outside Beam)



For Drain Detail see sheet #3



END OF CURB

GENERAL NOTES

1. Reinforcement shall be furnished high tensile steel conforming to the requirements of the American Institute of Steel Construction, Inc. (AISC) and the American Iron and Steel Institute (AISI).
 2. All reinforcement shall be furnished in the form of bars and shall be furnished with the proper identification marks.
 3. The reinforcement shall be furnished in the form of bars and shall be furnished with the proper identification marks.
 4. The reinforcement shall be furnished in the form of bars and shall be furnished with the proper identification marks.
 5. The reinforcement shall be furnished in the form of bars and shall be furnished with the proper identification marks.

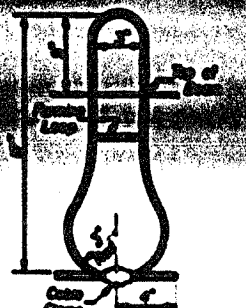
BILL OF MATERIAL

Item	Quantity	Unit	Material	Notes
Concrete	1.00	cu yd	Class X	
Reinforcement Bars	1.00	lbs	60	

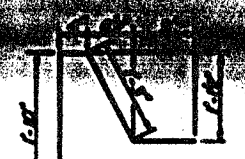
EXTERIOR BEAMS
 SUPERSTRUCTURE
 F.D. 1302-SEG. 110B-1R
 ROONE COUNTY
 5-23-50

DESIGNED: S. J. T.
 CHECKED: P. S. W.
 DRAWN: L. M. H.
 SCALE: 1" = 1'-0"

APPROVED: _____
 DIRECTOR OF HIGHWAYS



LIFTING LOOP DETAIL



D BAR