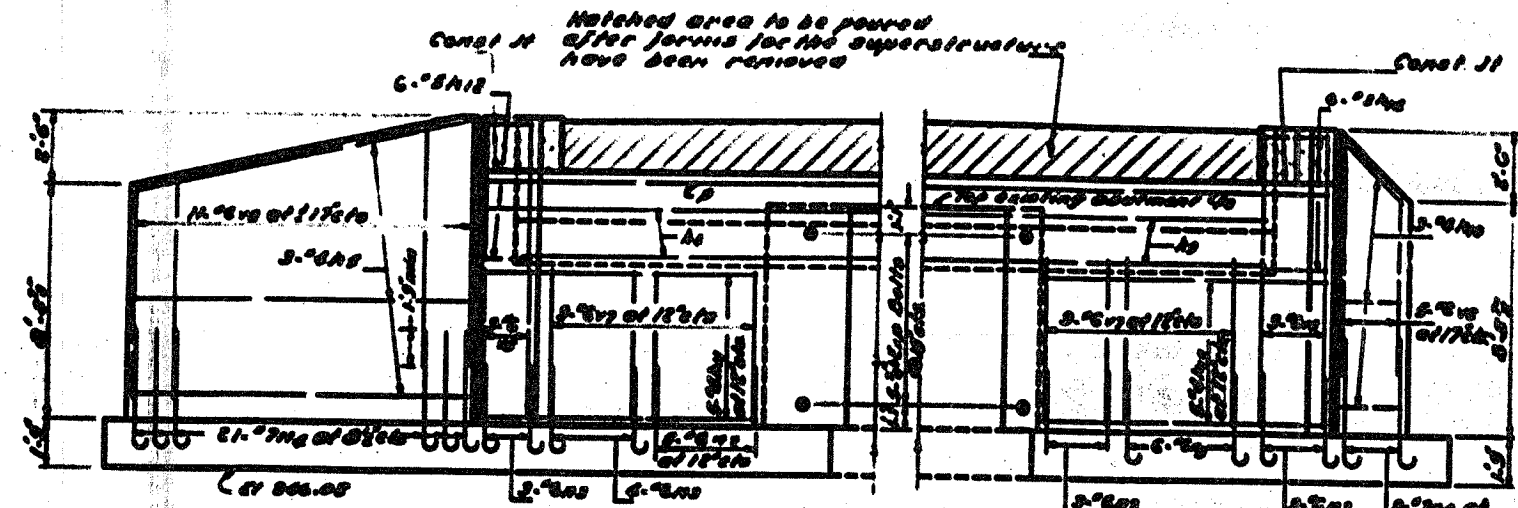


STATE OF ILLINOIS  
 DEPARTMENT OF TRANSPORTATION

NO.	DATE	BY	CHKD.	APP.
10				

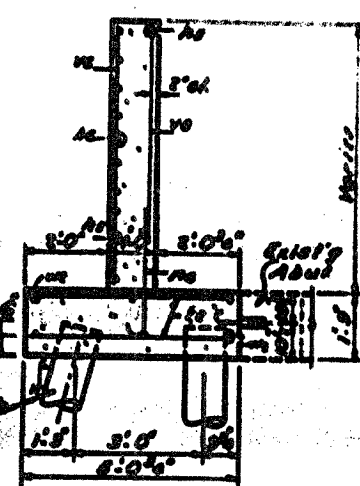
12 SHEETS



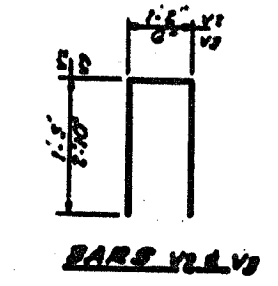
Note  
 For reinforcement in front  
 face see sheet 97

Reinforcement Back Face  
 (Unless is shown)

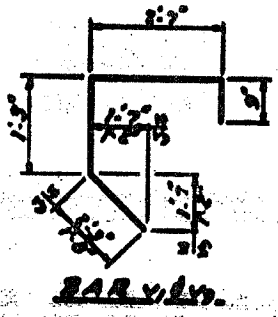
ELEVATION



SEC. C-C



BARS V.L.V.1



BARS V.L.V.2

BILL OF MATERIAL

NO.	QTY	SIZE	WGT.	WGT.
1	10	1/2"	10	100
2	5	3/4"	15	75
3	5	1"	20	100
4	5	1 1/4"	30	150
5	5	1 1/2"	40	200
6	5	2"	70	350
7	5	2 1/2"	100	500
8	5	3"	130	650
9	5	3 1/2"	170	850
10	5	4"	210	1050
11	5	4 1/2"	260	1300
12	5	5"	310	1550
13	5	5 1/2"	370	1850
14	5	6"	430	2150
15	5	6 1/2"	500	2500
16	5	7"	570	2850
17	5	7 1/2"	650	3250
18	5	8"	730	3650
19	5	8 1/2"	820	4100
20	5	9"	910	4550
21	5	9 1/2"	1010	5050
22	5	10"	1110	5550
23	5	10 1/2"	1220	6100
24	5	11"	1330	6650
25	5	11 1/2"	1450	7250
26	5	12"	1570	7850
27	5	12 1/2"	1700	8500
28	5	13"	1830	9150
29	5	13 1/2"	1970	9850
30	5	14"	2110	10550
31	5	14 1/2"	2260	11300
32	5	15"	2410	12050
33	5	15 1/2"	2570	12850
34	5	16"	2730	13650
35	5	16 1/2"	2900	14500
36	5	17"	3070	15350
37	5	17 1/2"	3250	16250
38	5	18"	3430	17150
39	5	18 1/2"	3620	18100
40	5	19"	3810	19050
41	5	19 1/2"	4010	20050
42	5	20"	4210	21050
43	5	20 1/2"	4420	22100
44	5	21"	4630	23150
45	5	21 1/2"	4850	24250
46	5	22"	5070	25350
47	5	22 1/2"	5300	26500
48	5	23"	5530	27650
49	5	23 1/2"	5770	28850
50	5	24"	6010	30050
51	5	24 1/2"	6260	31300
52	5	25"	6510	32550
53	5	25 1/2"	6770	33850
54	5	26"	7030	35150
55	5	26 1/2"	7300	36500
56	5	27"	7570	37850
57	5	27 1/2"	7850	39250
58	5	28"	8130	40650
59	5	28 1/2"	8420	42100
60	5	29"	8710	43550
61	5	29 1/2"	9010	45050
62	5	30"	9310	46550
63	5	30 1/2"	9620	48100
64	5	31"	9930	49650
65	5	31 1/2"	10250	51250
66	5	32"	10570	52850
67	5	32 1/2"	10900	54450
68	5	33"	11230	56050
69	5	33 1/2"	11570	57700
70	5	34"	11910	59350
71	5	34 1/2"	12260	61050
72	5	35"	12610	62750
73	5	35 1/2"	12970	64500
74	5	36"	13330	66250
75	5	36 1/2"	13700	68050
76	5	37"	14070	69850
77	5	37 1/2"	14450	71650
78	5	38"	14830	73450
79	5	38 1/2"	15220	75250
80	5	39"	15610	77050
81	5	39 1/2"	16010	78850
82	5	40"	16410	80650
83	5	40 1/2"	16820	82500
84	5	41"	17230	84350
85	5	41 1/2"	17650	86200
86	5	42"	18070	88050
87	5	42 1/2"	18500	89950
88	5	43"	18930	91850
89	5	43 1/2"	19370	93750
90	5	44"	19810	95650
91	5	44 1/2"	20260	97600
92	5	45"	20710	99550
93	5	45 1/2"	21170	101550
94	5	46"	21630	103550
95	5	46 1/2"	22100	105600
96	5	47"	22570	107650
97	5	47 1/2"	23050	109750
98	5	48"	23530	111850
99	5	48 1/2"	24020	113950
100	5	49"	24510	116050
101	5	49 1/2"	25010	118150
102	5	50"	25510	120250
103	5	50 1/2"	26020	122350
104	5	51"	26530	124450
105	5	51 1/2"	27050	126550
106	5	52"	27570	128650
107	5	52 1/2"	28100	130750
108	5	53"	28630	132850
109	5	53 1/2"	29170	134950
110	5	54"	29710	137050
111	5	54 1/2"	30260	139150
112	5	55"	30810	141250
113	5	55 1/2"	31370	143350
114	5	56"	31930	145450
115	5	56 1/2"	32500	147550
116	5	57"	33070	149650
117	5	57 1/2"	33650	151750
118	5	58"	34230	153850
119	5	58 1/2"	34820	155950
120	5	59"	35410	158050
121	5	59 1/2"	36010	160150
122	5	60"	36610	162250
123	5	60 1/2"	37220	164350
124	5	61"	37830	166450
125	5	61 1/2"	38450	168550
126	5	62"	39070	170650
127	5	62 1/2"	39700	172750
128	5	63"	40330	174850
129	5	63 1/2"	40970	176950
130	5	64"	41610	179050
131	5	64 1/2"	42260	181150
132	5	65"	42910	183250
133	5	65 1/2"	43570	185350
134	5	66"	44230	187450
135	5	66 1/2"	44900	189550
136	5	67"	45570	191650
137	5	67 1/2"	46250	193750
138	5	68"	46930	195850
139	5	68 1/2"	47620	197950
140	5	69"	48310	200050
141	5	69 1/2"	49010	202150
142	5	70"	49710	204250
143	5	70 1/2"	50420	206350
144	5	71"	51130	208450
145	5	71 1/2"	51850	210550
146	5	72"	52570	212650
147	5	72 1/2"	53300	214750
148	5	73"	54030	216850
149	5	73 1/2"	54770	218950
150	5	74"	55510	221050
151	5	74 1/2"	56260	223150
152	5	75"	57010	225250
153	5	75 1/2"	57770	227350
154	5	76"	58530	229450
155	5	76 1/2"	59300	231550
156	5	77"	60070	233650
157	5	77 1/2"	60850	235750
158	5	78"	61630	237850
159	5	78 1/2"	62420	239950
160	5	79"	63210	242050
161	5	79 1/2"	64010	244150
162	5	80"	64810	246250
163	5	80 1/2"	65620	248350
164	5	81"	66430	250450
165	5	81 1/2"	67250	252550
166	5	82"	68070	254650
167	5	82 1/2"	68900	256750
168	5	83"	69730	258850
169	5	83 1/2"	70570	260950
170	5	84"	71410	263050
171	5	84 1/2"	72260	265150
172	5	85"	73110	267250
173	5	85 1/2"	73970	269350
174	5	86"	74830	271450
175	5	86 1/2"	75700	273550
176	5	87"	76570	275650
177	5	87 1/2"	77450	277750
178	5	88"	78330	279850
179	5	88 1/2"	79220	281950
180	5	89"	80110	284050
181	5	89 1/2"	81010	286150
182	5	90"	81910	288250
183	5	90 1/2"	82820	290350
184	5	91"	83730	292450
185	5	91 1/2"	84650	294550
186	5	92"	85570	296650
187	5	92 1/2"	86500	298750
188	5	93"	87430	300850
189	5	93 1/2"	88370	302950
190	5	94"	89310	305050
191	5	94 1/2"	90260	307150
192	5	95"	91210	309250
193	5	95 1/2"	92170	311350
194	5	96"	93130	313450
195	5	96 1/2"	94100	315550
196	5	97"	95070	317650
197	5	97 1/2"	96050	319750
198	5	98"	97030	321850
199	5	98 1/2"	98020	323950
200	5	99"	99010	326050
201	5	99 1/2"	100010	328150
202	5	100"	101010	330250
203	5	100 1/2"	102020	332350
204	5	101"	103030	334450
205	5	101 1/2"	104050	336550
206	5	102"	105070	338650
207	5	102 1/2"	106100	340750
208	5	103"	107130	342850
209	5	103 1/2"	108170	344950
210	5	104"	109210	347050
211	5	104 1/2"	110260	349150
212	5	105"	111310	351250
213	5	105 1/2"	112370	353350
214	5	106"	113430	355450
215	5	106 1/2"	114500	357550
216	5	107"	115570	359650
217	5	107 1/2"	116650	361750
218	5	108"	117730	363850
219	5	108 1/2"	118820	365950
220	5	109"	119910	368050
221	5	109 1/2"	121010	370150
222	5	110"	122110	372250
223	5	110 1/2"	123220	374350
224	5	111"	124330	376450
225	5	111 1/2"	125450	378550
226	5	112"	126570	380650
227	5	112 1/2"	127700	382750
228	5	113"	128830	384850
229	5	113 1/2"	129970	386950
230	5	114"	131110	389050
231	5	114 1/2"	132260	391150
232	5	115"	133410	393250
233	5	115 1/2"	134570	395350
234	5	116"	135730	397450
235	5	116 1/2"	136900	399550
236	5	117"	138070	401650
237	5	117 1/2"	139250	403750
238	5	118"	140430	405850
239	5	118 1/2"	141620	407950
240	5			