

64857

F.A.I. RTE.	SECTION	COUNTY	TOTAL SHEETS	SHEET NO.
39	201-1BR	WINNEBAGO	40	1

STATE OF ILLINOIS
DEPARTMENT OF TRANSPORTATION
DIVISION OF HIGHWAYS
**PROPOSED
HIGHWAY PLANS**

D-92-009-03



LOCATION OF SECTION INDICATED THIS: - - -

STANDARDS

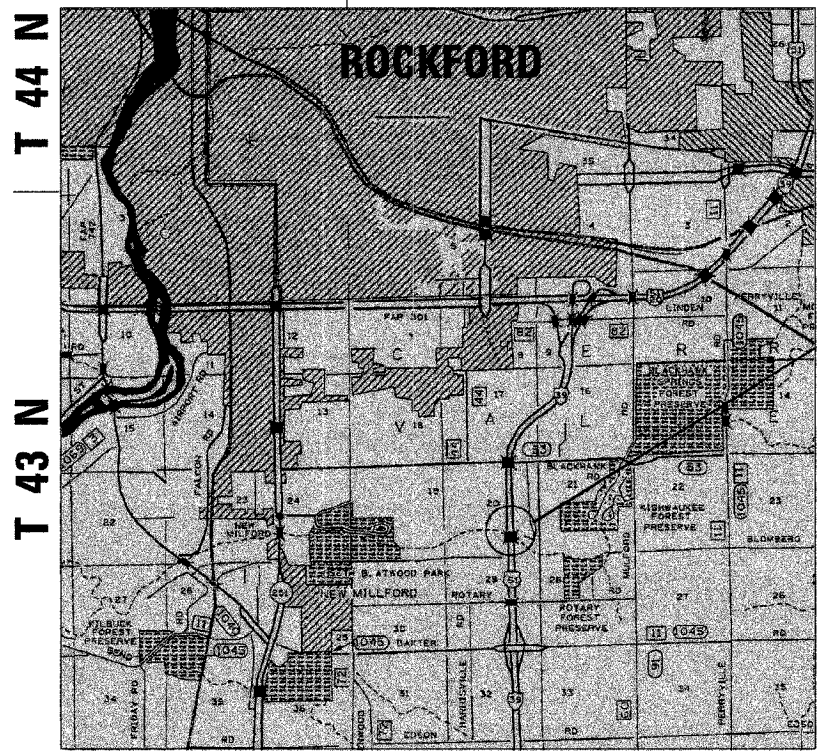
- 630001-07
- 642001
- 701400-02
- 701411-03
- 701406-04
- 701416-05
- 701426-02
- 702001-06
- 704001-03
- 720011
- 728001
- 729001
- 780001-01

DETAILS

- 25.4 - DELINEATION OF CENTER BARRIER OF TWO-LANE TWO WAY OPERATION
- 87.4 - TYPICAL MEDIAN CROSSOVER (WITH EMERGENCY OPENING)

FAI ROUTE 39 (I-39)
SECTION 201-1BR
WINNEBAGO COUNTY
C-92-124-06
PROJECT IM-039-1(015)116

R 1 E R 2 E



PROJECT LOCATION
STA. 2425 + 55.00 (SB) SN 101-0133
STA. 2424 + 56.00 (NB) SN 101-0134

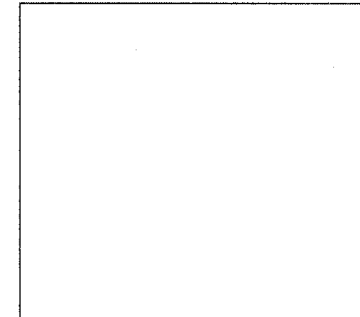
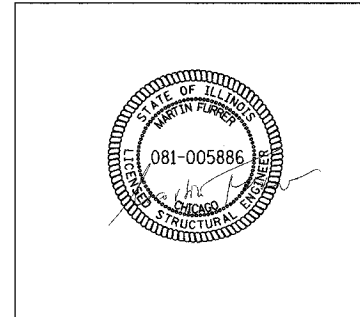
STATE OF ILLINOIS
DEPARTMENT OF TRANSPORTATION
DIVISION OF HIGHWAYS

SUBMITTED FEB 5 2007

Joseph E. Gowen
DISTRICT ENGINEER

March 23, 2007
Eric E. Hernandez
ENGINEER OF DESIGN AND ENVIRONMENT

March 23, 2007
Milton R. See, P.E.
DIRECTOR, DIVISION OF HIGHWAYS



PREPARED BY: PROJECT ENGINEER: MARTIN FURRER, P.E., S.E.
FOR SHEETS 1 THRU 27 AND 35 THRU 40

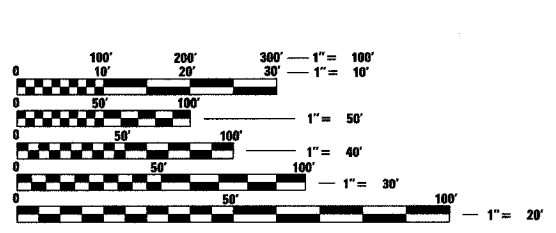
RALPH E. ANDERSON, P.E., S.E.
FOR SHEETS 28 THRU 34

PARSONS
10 S. RIVERSIDE PLAZA SUITE 400
CHICAGO, IL 60606

**PRINTED BY THE AUTHORITY
OF THE STATE OF ILLINOIS**

LOCATION MAP

MAP SCALE 1:4000'
PROJECT LENGTH: 1163' (NB)
1170' (SB)



FULL SIZE PLANS HAVE BEEN PREPARED USING STANDARD ENGINEERING SCALES. REDUCED SIZED PLANS WILL NOT CONFORM TO STANDARD SCALES. IN MAKING MEASUREMENTS ON REDUCED PLANS, THE ABOVE SCALES MAY BE USED.

J.U.L.I.E. 1-800-892-0123
JOINT UTILITY LOCATION INFORMATION FOR EXCAVATION

CONTRACT NO. 64857

Filename: P:\6265-KISHWAUKEE-IRF\CADD\Final\Sheet\KsTitles.sht