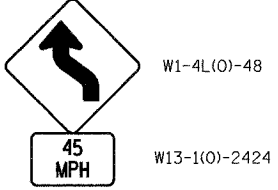
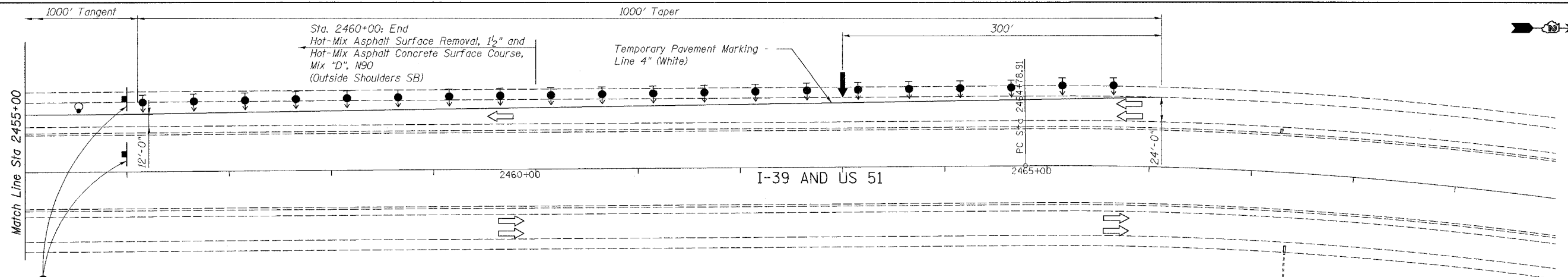
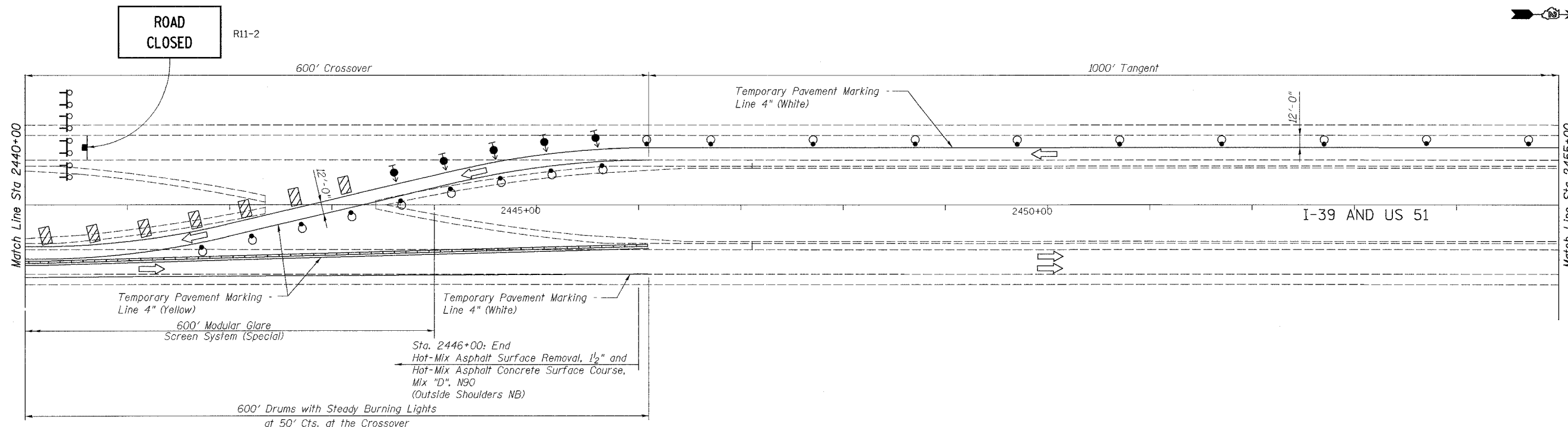


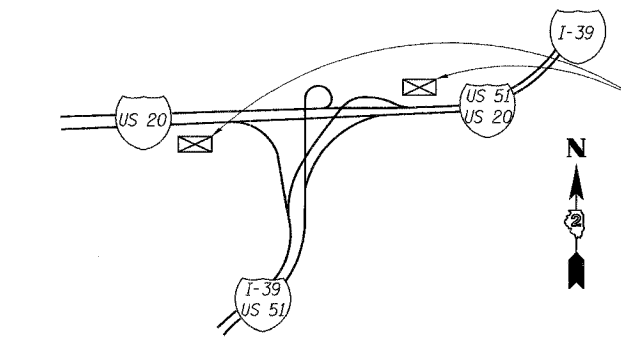
ROUTE NO.	SECT.	COUNTY	SHEET NO.	TOTAL SHEETS
F.A.I. 39	201-1BR	WINNEBAGO	7	40
FED. ROAD DIST. NO. 7	ILLINOIS		FED. AID PROJECT	

CONTRACT NO. 64857



- LEGEND:**
- Direction of Traffic Flow
  - Direction Indicator Barricade with Steady Burn Monodirectional Light
  - Drum with Steady Burn Monodirectional Light
  - Vertical Panel (Back to Back)
  - Type III Barricade with Flashing Lights
  - Temporary Concrete Barrier
  - Exist Steel Plate Beam Guardrail
  - Proposed Steel Plate Beam Guardrail, Type A
  - Construction in this Stage

- Arrow Board
- Sign



Road Construction Ahead Signage per Standard 701400. Modify "Road Construction Ahead" Sign by adding I-39 Shield.



NOTES:  
Refer to Standard 701400 and 701416 for additional signing and marking requirements.

**CONSTRUCTION AHEAD SIGNAGE PLAN**  
Not to Scale

Date: 2/2/2007 Time: 4:34 PM File name: P:\646265-Kishwaukee-mrf\cadd\final\sheet\nogesc04.sht

Designed by: EVI  
Checked by: GCV  
Drafted by: HF  
Checked by: GLV

Note: Signage shall be included with "Traffic Control and Protection, Standard 701416."

REVISION	DATE	DESCRIPTION
<b>STATE OF ILLINOIS</b> <b>DEPARTMENT OF TRANSPORTATION</b> <b>TRAFFIC CONTROL PLAN - STAGE 1</b> <b>STA 2440+00 TO STA 2470+00</b> I-39 (FAI 39) OVER KISHWAUKEE RIVER SECTION 201-1BR WINNEBAGO COUNTY STATION 2425+00 STRUCTURE NOS. 101-0133 (S.B.) & 101-0134 (N.B.)		
		CHICAGO, ILLINOIS
DRAWING NO. 7	SCALE 1"=50'-0"	DATE FEB 2007
		SHEET NO. R-6