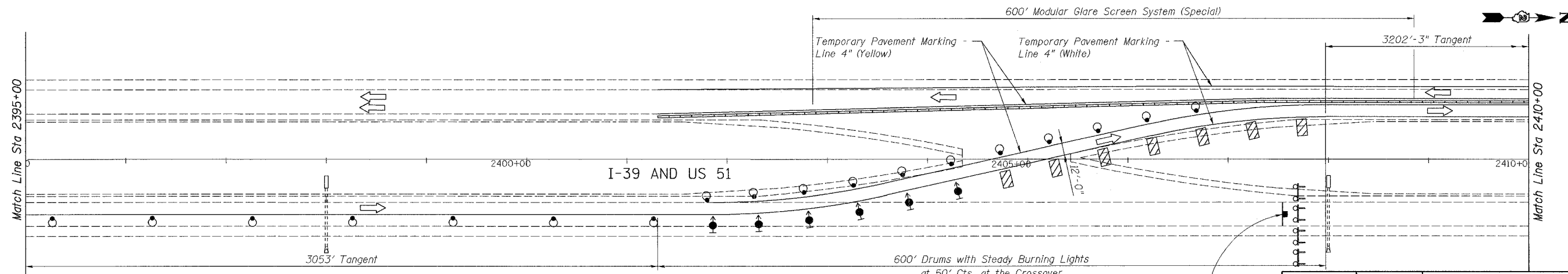
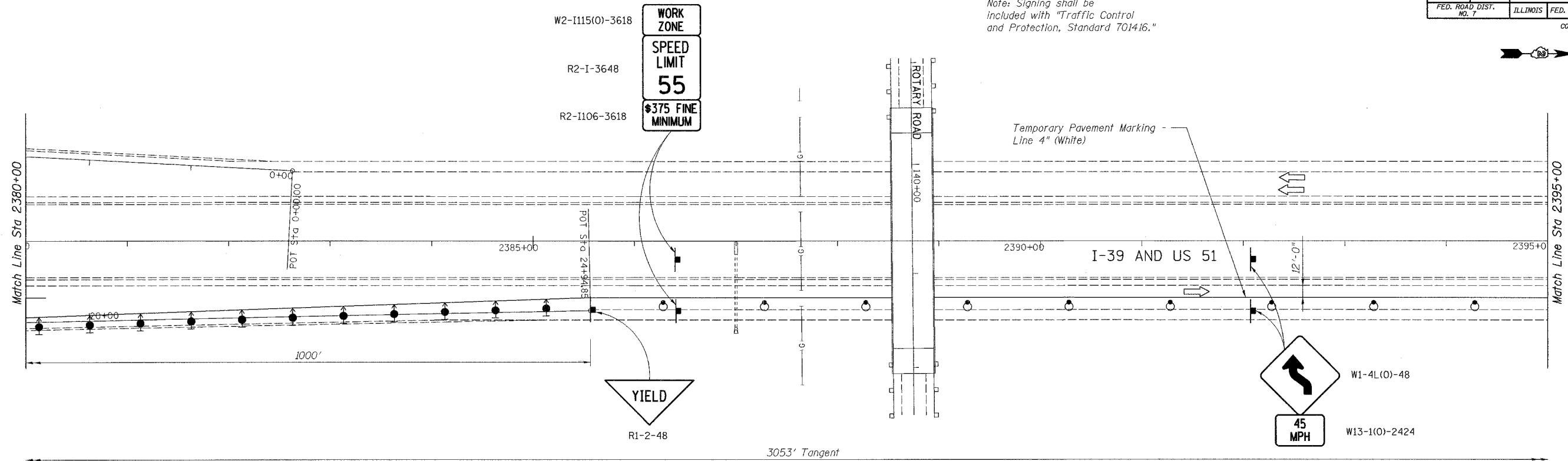


ROUTE NO.	SECT.	COUNTY	SHEET NO.	TOTAL SHEETS
F.A.I. 39	201-IBR	WINNEBAGO	9	40
FED. ROAD DIST. NO. 7	ILLINOIS	FED. AID PROJECT	CONTRACT NO. 64857	

Note: Signing shall be included with "Traffic Control and Protection, Standard 701416."

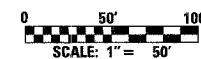
Date: 2/2/2007 Time: 4:34 PM



LEGEND:

- Direction of Traffic Flow
- Arrow Board
- Direction Indicator Barricade with Steady Burn Monodirectional Light
- Drum with Steady Burn Monodirectional Light
- Vertical Panel (Back to Back)
- Type III Barricade with Flashing Lights
- Temporary Concrete Barrier
- Exist Steel Plate Beam Guardrail
- Proposed Steel Plate Beam Guardrail, Type A
- Construction in this Stage

Designed by: EVI
Checked by: GCY
Drafted by: HH
Checked by: GLV



NOTES:

Refer to Standard 701400 and 701416 for additional signing and marking requirements.

REVISION	DATE	DESCRIPTION
STATE OF ILLINOIS DEPARTMENT OF TRANSPORTATION TRAFFIC CONTROL PLAN - STAGE 2 STA 2380+00 TO STA 2410+00 I-39 (FAI 39) OVER KISHWAUKEE RIVER SECTION 201-IBR WINNEBAGO COUNTY STATION 2425+00 STRUCTURE NOS. 101-0133 (S.B.) & 101-0134 (N.B.)		
		CHICAGO, ILLINOIS
DRAWING NO. 9	SCALE 1"=50'-0"	DATE FEB 2007
		SHEET NO. R-8