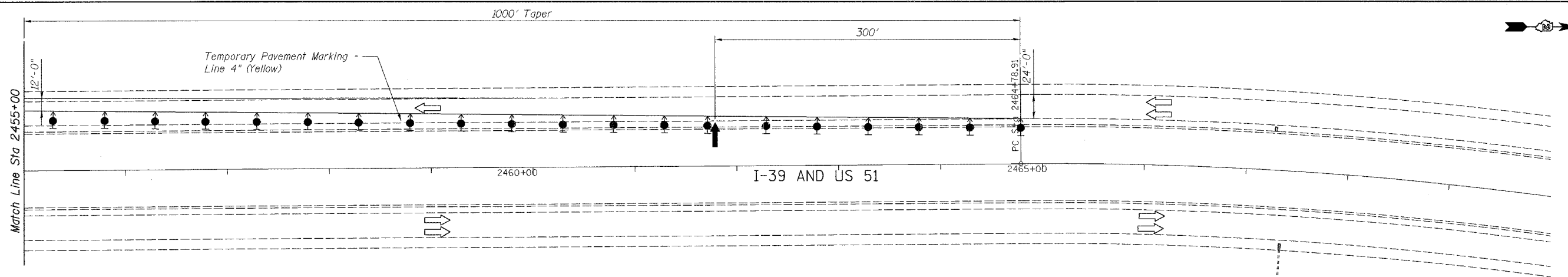
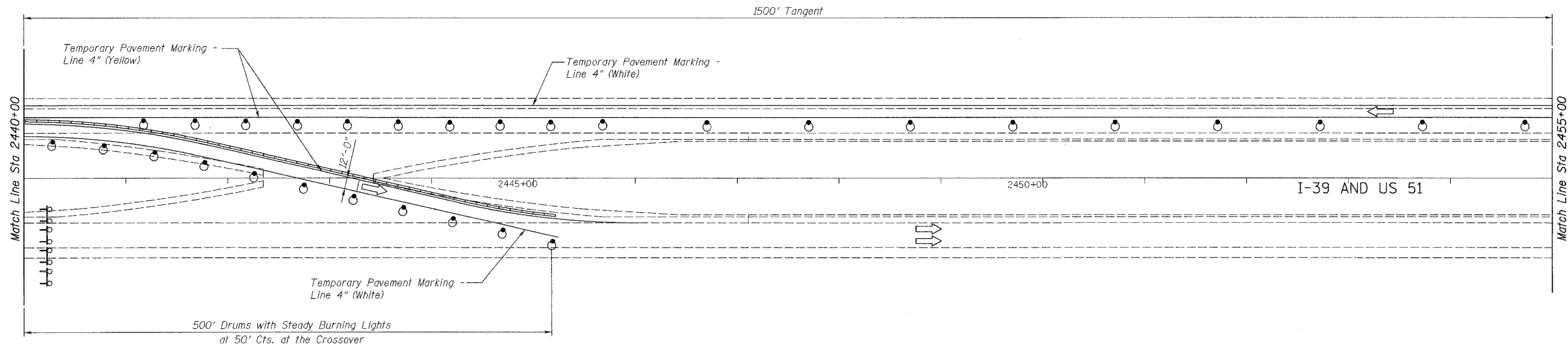


ROUTE NO.	SECT.	COUNTY	SHEET NO.	TOTAL SHEETS
F.A.I. 39	201-1BR	WINNEBAGO	11	40
FED. ROAD DIST. NO. 1	ILLINOIS	FED. AID PROJECT		

CONTRACT NO. 64657

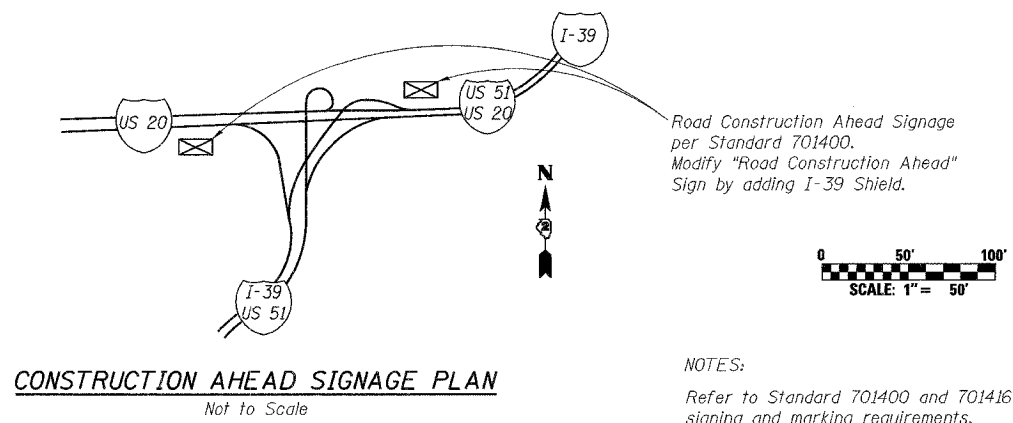
Date: 2/2/2007 Time: 4:13 PM

Filename: p:\646265-Kishwaukee-mr.f.cadd\final\sheet\moges08.sht



LEGEND:

- Direction of Traffic Flow
- Arrow Board
- Direction Indicator Barricade with Steady Burn Monodirectional Light
- Drum with Steady Burn Monodirectional Light
- Vertical Panel (Back to Back)
- Type III Barricade with Flashing Lights
- Temporary Concrete Barrier
- Exist Steel Plate Beam Guardrail
- Proposed Steel Plate Beam Guardrail, Type A
- Construction in this Stage



NOTES:
Refer to Standard 701400 and 701416 for additional signing and marking requirements.

REVISION	DATE	DESCRIPTION
STATE OF ILLINOIS DEPARTMENT OF TRANSPORTATION TRAFFIC CONTROL PLAN - STAGE 2 STA 2440+00 TO STA 2470+00 I-39 (FAI 39) OVER KISHWAUKEE RIVER SECTION 201-1BR WINNEBAGO COUNTY STATION 2425+00 STRUCTURE NOS. 101-0133 (S.B.) & 101-0134 (N.B.)		
PARSONS		CHICAGO, ILLINOIS
DRAWING NO. 11	SCALE 1"=50'-0"	DATE FEB 2007
		SHEET NO. R-10

Designed by: EVI
Checked by: GCV
Drafted by: HH
Checked by: GLV