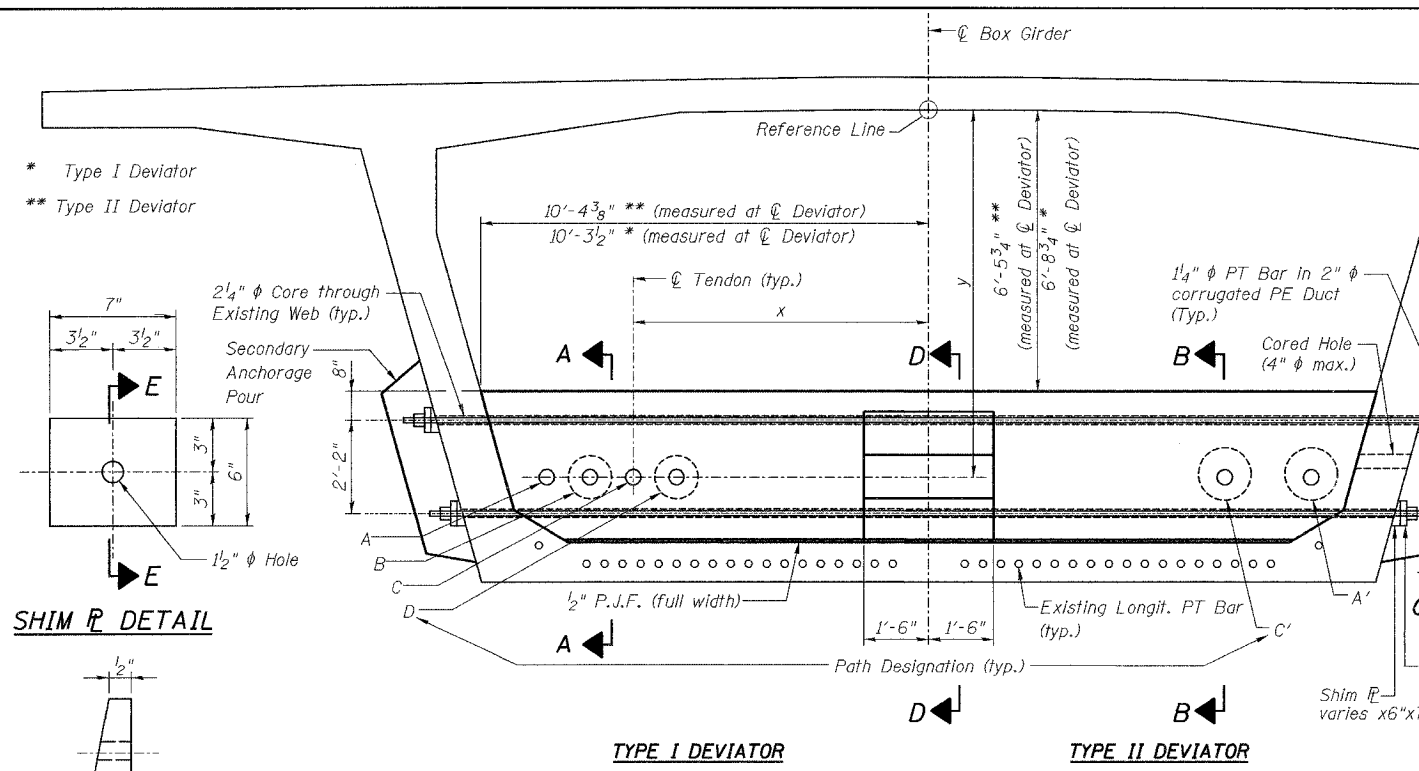


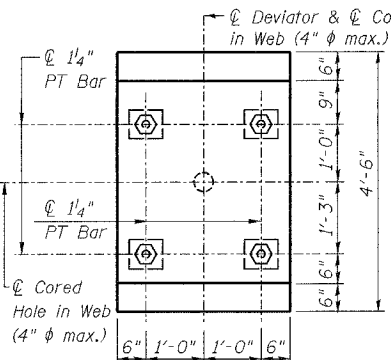
ROUTE NO.	SECT.	COUNTY	SHEET NO.	TOTAL SHEETS
F.A.I. 39	201-1BR	WINNEBAGO	15	40
FED. ROAD DIST. NO. 7	ILLINOIS	FED. AID PROJECT		
CONTRACT NO. 64857				

Date: 2/2/2007 Time: 4:29:53 PM

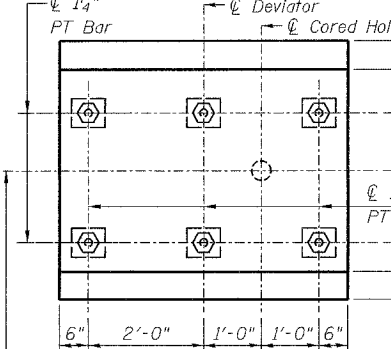


**SHIM & DETAIL**

**SECTION E-E**

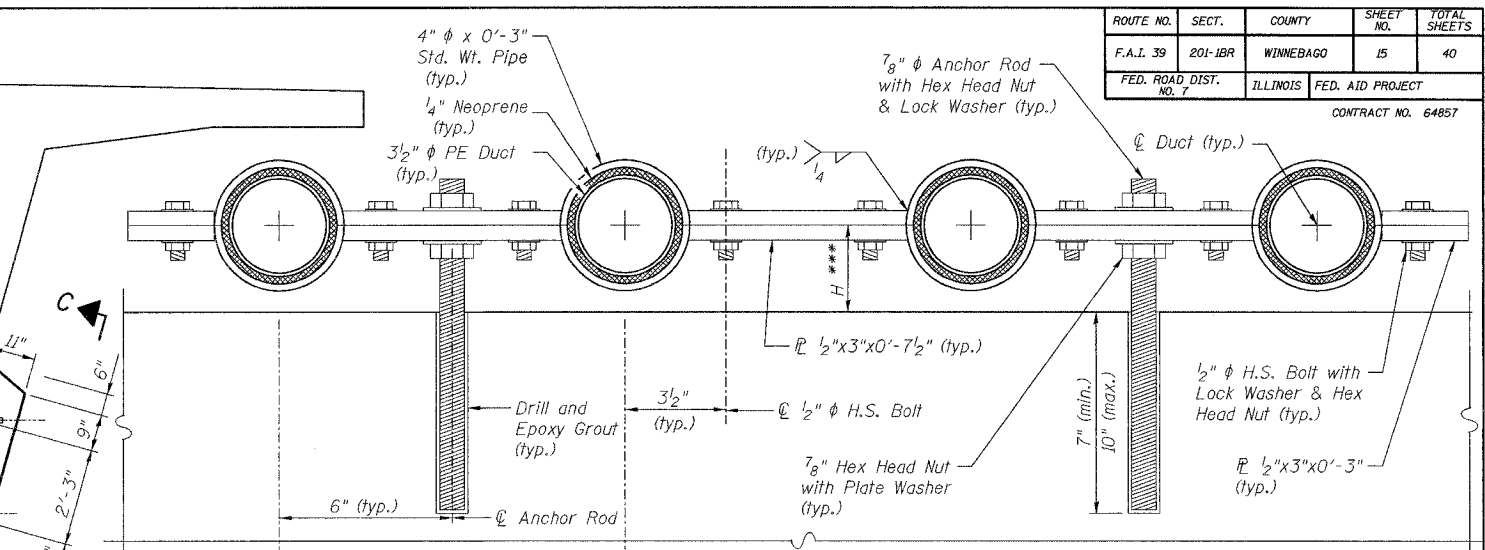


**VIEW C-C (Type I Deviator)**

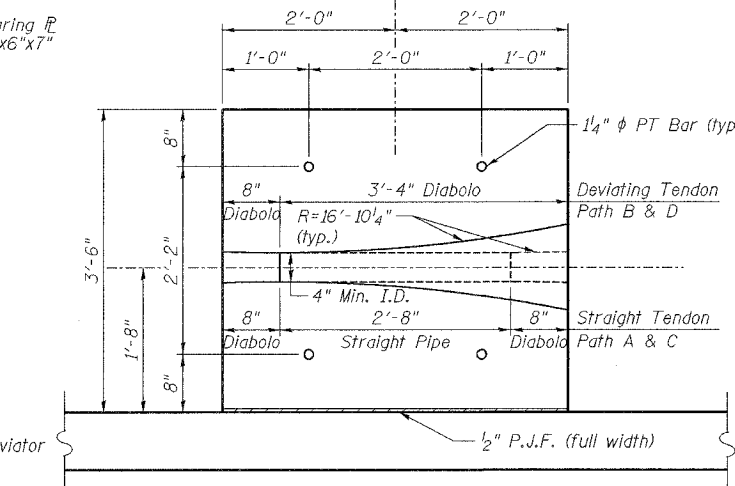


**VIEW C-C (Type II Deviator)**

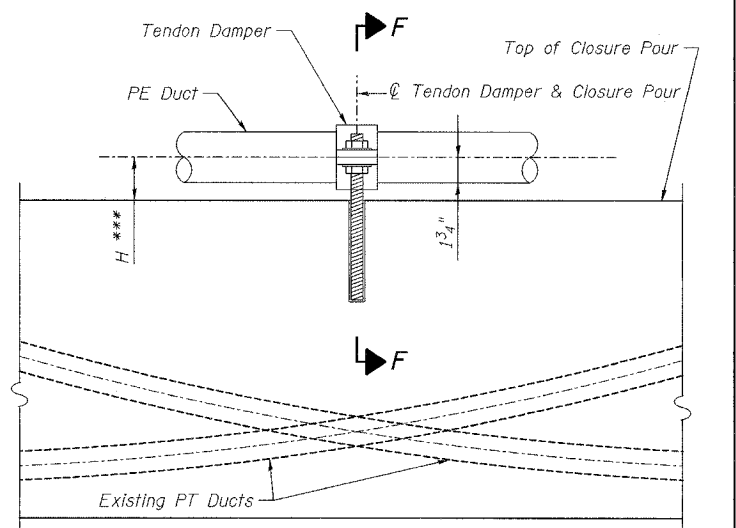
Designed by: WEE  
 Checked by: DL  
 Drafted by: HH  
 Checked by: DL



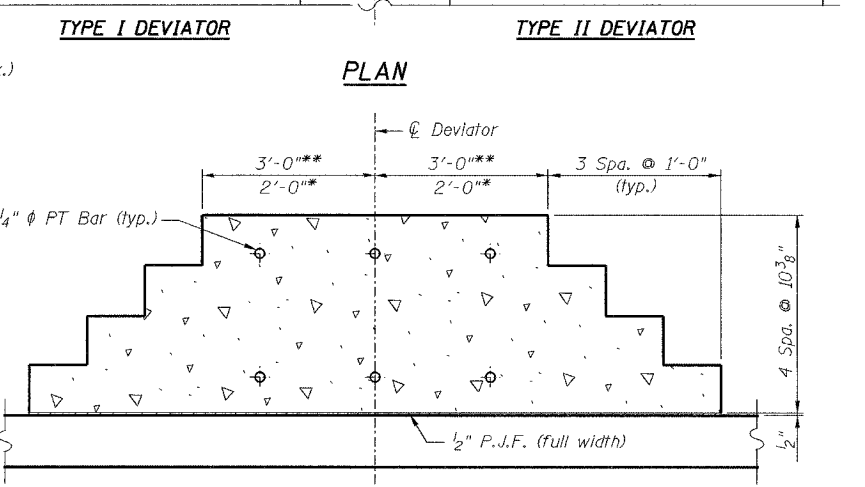
**SECTION F-F**



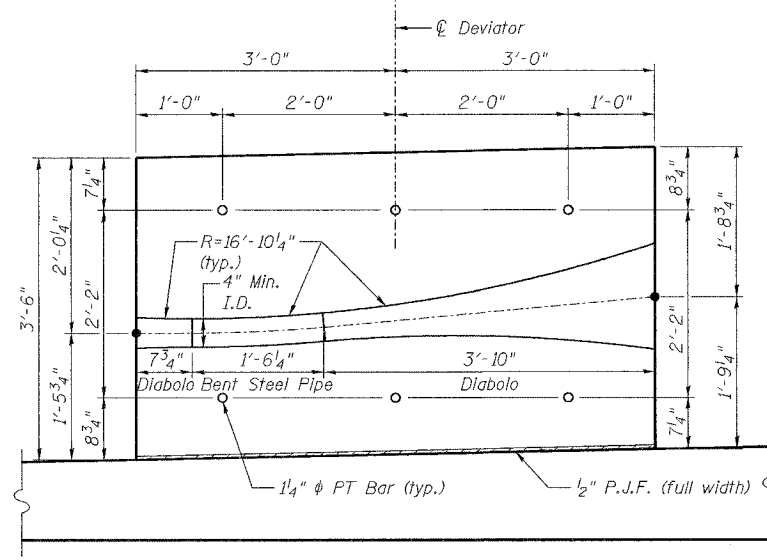
**SECTION A-A**



**TENDON DAMPER DETAIL**  
 (See Sheet 14 for Location of Details, Typical Between Piers)



**SECTION D-D**  
 (Type II Deviator Shown, Type I Similar)



**SECTION B-B**

**NOTES:**  
 For deviator type locations and variable dimensions, see Sheet S-5.  
 Cost of tendon damper shall be included with "Furnishing and Installing Post-Tensioning System."  
 Cost for Preformed Joint Filler (P.J.F.), coring holes in web, and 1/2" grout vents shall be included with "Concrete Superstructure."

REVISION	DATE	DESCRIPTION
<b>STATE OF ILLINOIS</b> DEPARTMENT OF TRANSPORTATION		
<b>BOTTOM SLAB DEVIATOR GEOMETRY I</b>		
I-39 (FAI 39) OVER KISHWAUKEE RIVER SECTION 201-1BR WINNEBAGO COUNTY STATION 2425+00 STRUCTURE NOS. 101-0133 (S.B.) & 101-0134 (N.B.)		
<b>PARSONS</b>		CHICAGO, ILLINOIS
DRAWING NO. 15	SCALE N.T.S.	DATE FEB 2007
		SHEET NO. S-4