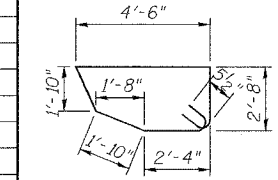
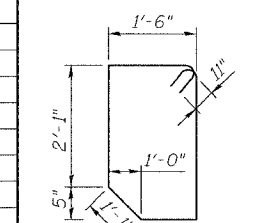
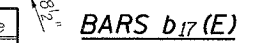


ROUTE NO.	SECT.	COUNTY	SHEET NO.	TOTAL SHEETS
F.A.I. 39	201-IBR	WINNEBAGO	19	40
FED. ROAD DIST. NO. 7	ILLINOIS	FED. AID PROJECT		

CONTRACT NO. 64857

BILL OF MATERIAL FOR ONE ABUTMENT
(S.B. or N.B.)

Bar	No.	Size	Length	Shape
a ₁₀ (E)	14	#6	8'-10"	□
a ₁₁ (E)	2	#6	8'-0"	□
a ₁₂ (E)	2	#6	7'-8"	□
a ₁₃ (E)	2	#6	7'-4"	□
a ₁₄ (E)	22	#6	7'-8"	□
b ₁₀ (E)	6	#5	14'-1"	□
b ₁₁ (E)	2	#5	6'-8"	□
b ₁₂ (E)	2	#5	6'-5"	□
b ₁₃ (E)	2	#5	6'-2"	□
b ₁₄ (E)	2	#5	4'-8"	□
b ₁₅ (E)	6	#6	6'-4"	□
b ₁₆ (E)	2	#6	6'-1"	□
b ₁₇ (E)	6	#5	13'-9"	□
d ₁₀ (E)	120	#6	2'-1"	—
d ₁₁ (E)	36	#5	1'-9"	—
s ₁₀ (E)	10	#7	9'-10"	□
s ₁₁ (E)	10	#7	9'-6"	□
s ₁₂ (E)	20	#7	8'-10"	□
Concrete Superstructure	Cu. Yd.	2.6		
Reinforcement Bars, Epoxy Coated	Pound	2005		



NOTES:

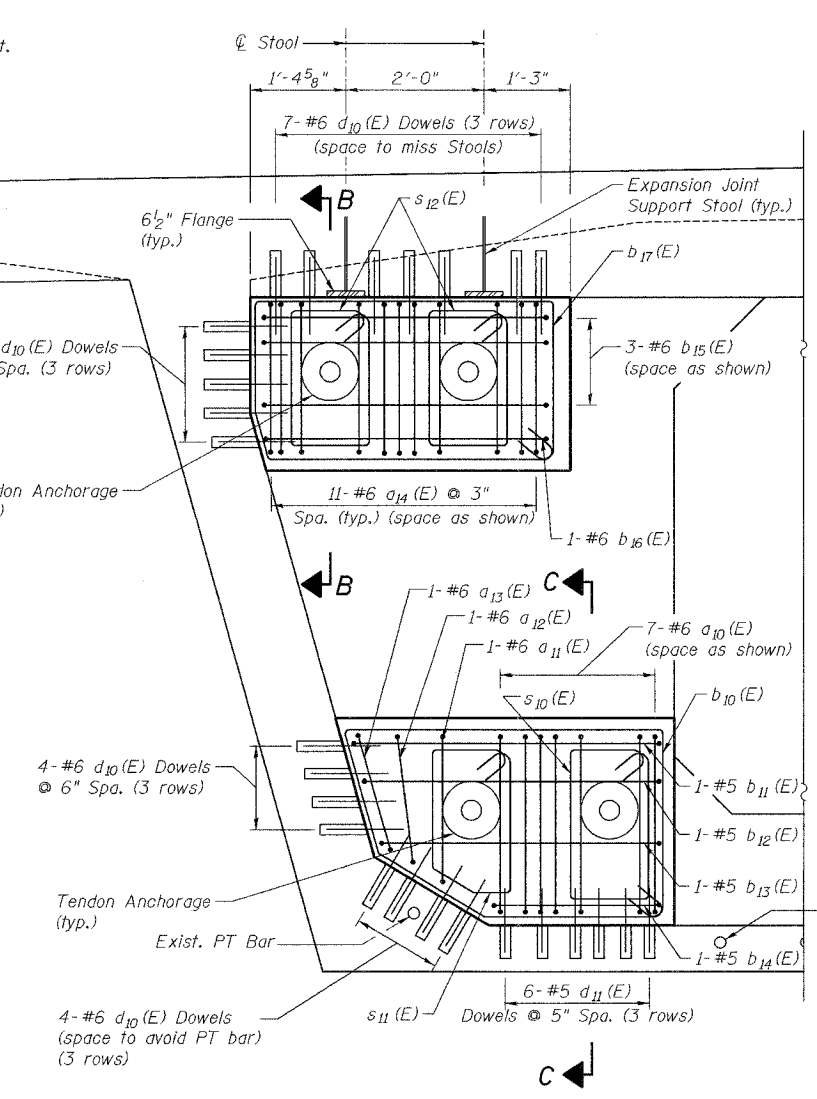
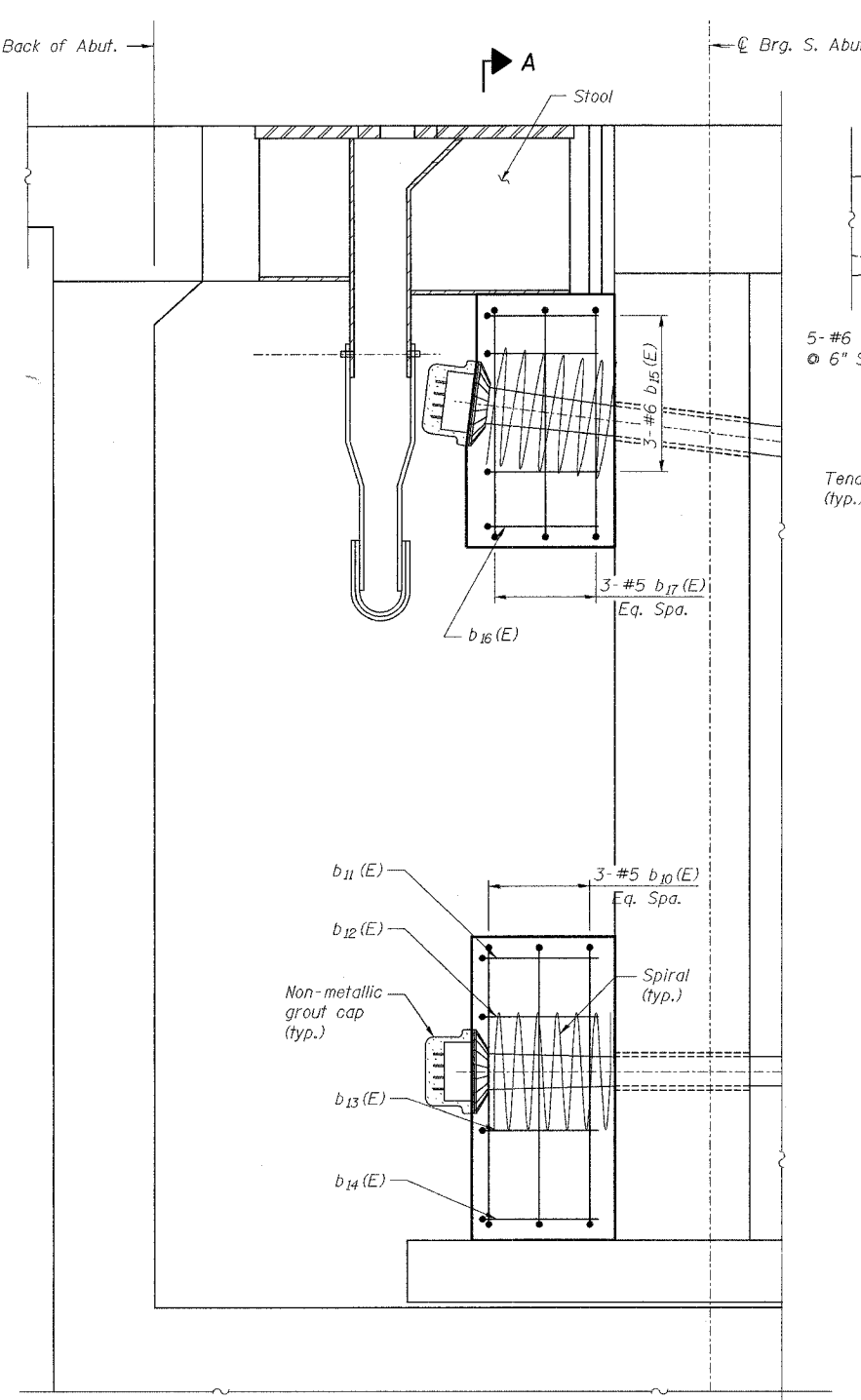
Location of existing PT Bars to be determined by Contractor using non-destructive methods for approval by the Engineer. No drilling is permitted without approval by the Engineer.

The cost of drilling and epoxy grouting dowel bars is included with "Concrete Superstructure". Installation as per Sec. 584 of the Standard Specifications. Min. depth of embedment shall be per manufacturer's specifications but not less than 5^s/₈" (#5 bar) and 7" (#6 bar), respectively. The epoxy grout shall develop no less than 125% of the yield strength of the dowel bar.

Contractor shall space Dowel Bars to miss transverse joint reinforcing steel placed in holes in Stool Web as shown on Contract Plan Sheet No.31 of 40. Contractor must ensure that no damage is done to transverse joint reinforcing steel during drilling operations.

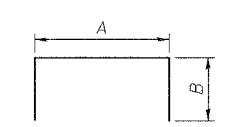
Reinforcement bars designated (E) shall be epoxy coated.

REVISION	DATE	DESCRIPTION
STATE OF ILLINOIS DEPARTMENT OF TRANSPORTATION		
ABUTMENT ANCHORAGE REINFORCEMENT		
I-39 (FAI 39) OVER KISHWAUKEE RIVER SECTION 201-IBR WINNEBAGO COUNTY STATION 2425+00 STRUCTURE NOS. 101-0133 (S.B.) & 101-0134 (N.B.)		
PARSONS		CHICAGO, ILLINOIS
DRAWING NO. 19	SCALE N.T.S.	DATE FEB 2007
		SHEET NO. S-8

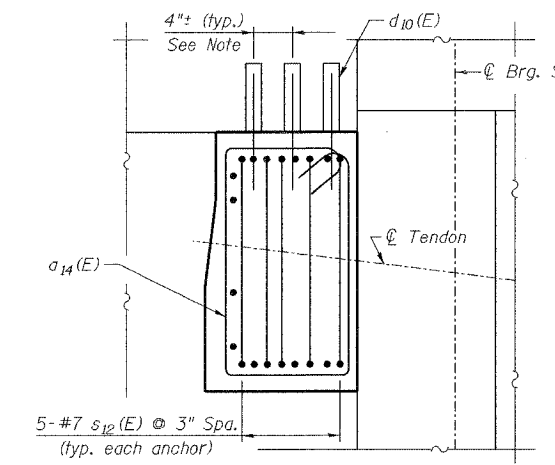


A & B DIMENSIONS

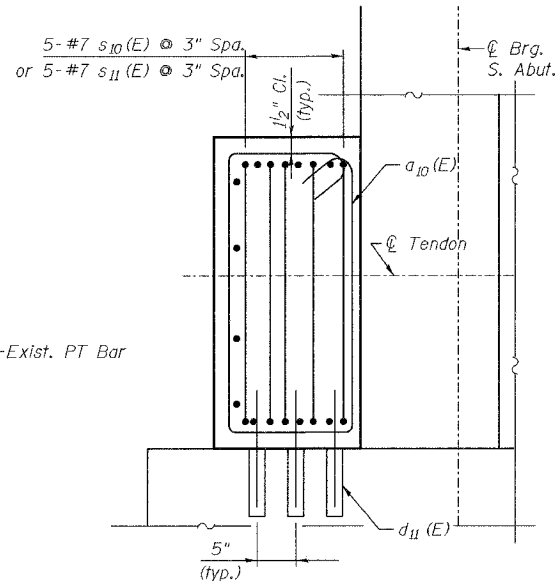
Bar	A	B
b ₁₁ (E)	4'-6"	1'-1"
b ₁₂ (E)	4'-3"	1'-1"
b ₁₃ (E)	4'-0"	1'-1"
b ₁₄ (E)	2'-6"	1'-1"
b ₁₅ (E)	4'-4"	1'-0"
b ₁₆ (E)	4'-1"	1'-0"



BARS b₁₁(E) thru b₁₆(E)



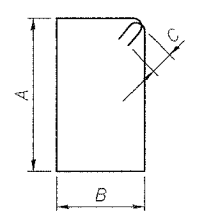
SECTION B-B
(Anchorage assembly not shown for clarity)



SECTION C-C
(Anchorage assembly not shown for clarity)

A, B & C DIMENSIONS

Bar	A	B	C
a ₁₀ (E)	2'-8"	1'-1"	0'-8"
a ₁₁ (E)	2'-3"	1'-1"	0'-8"
a ₁₂ (E)	2'-1"	1'-1"	0'-8"
a ₁₃ (E)	1'-11"	1'-1"	0'-8"
a ₁₄ (E)	2'-2"	1'-0"	0'-8"
s ₁₀ (E)	2'-6"	1'-6"	0'-11"
s ₁₂ (E)	2'-0"	1'-6"	0'-11"



**BARS a₁₀(E) thru a₁₄(E)
s₁₀(E) & s₁₂(E)**

Date: 3/16/2007
 Time: 3:23:43 PM
 File: P:\646265-KISHWAUKEE-MRF\CAD\Drawings\Sheet\astabrtf01.sht

Designed by: WEE
 Checked by: DL
 Drafted by: HH
 Checked by: DL