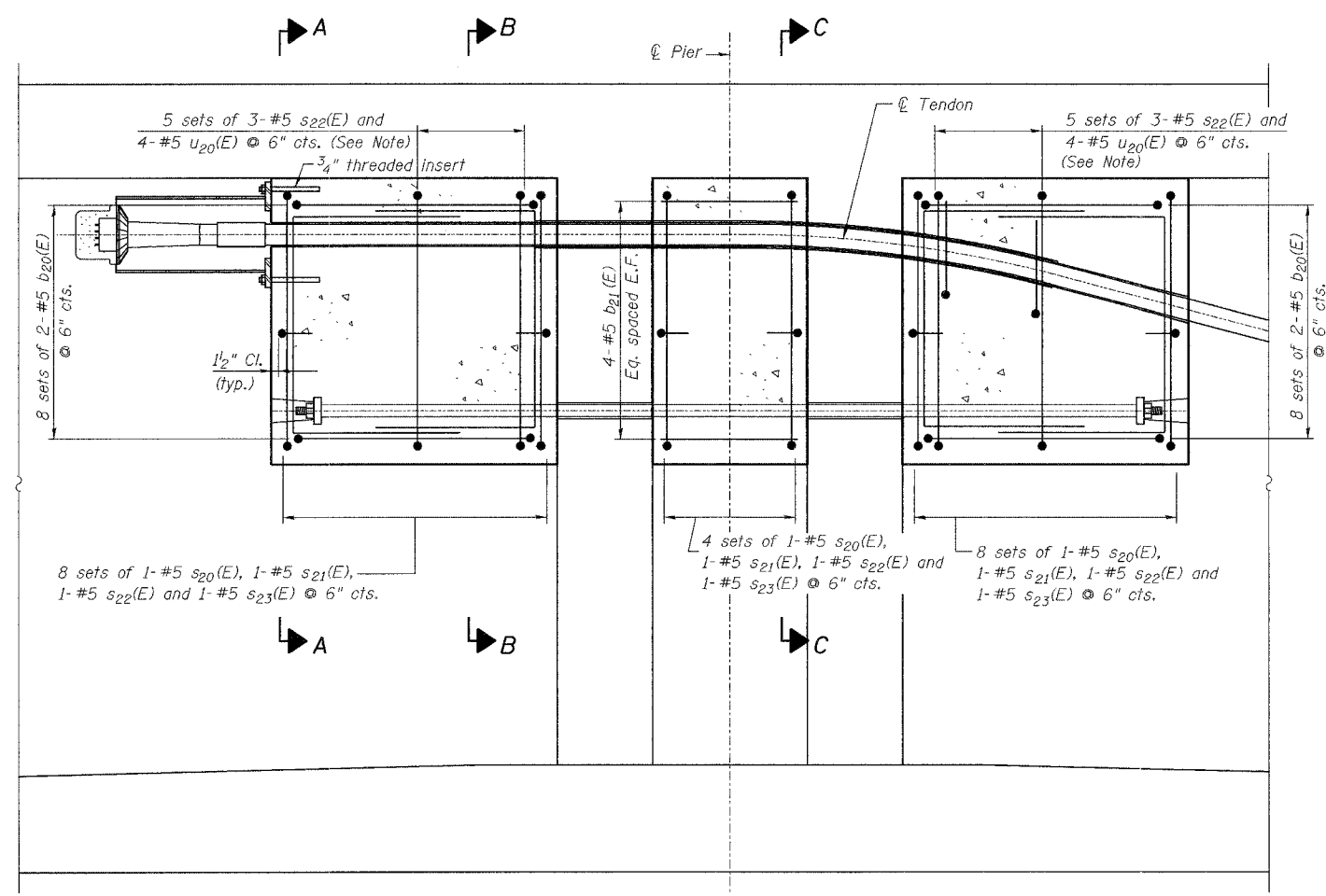
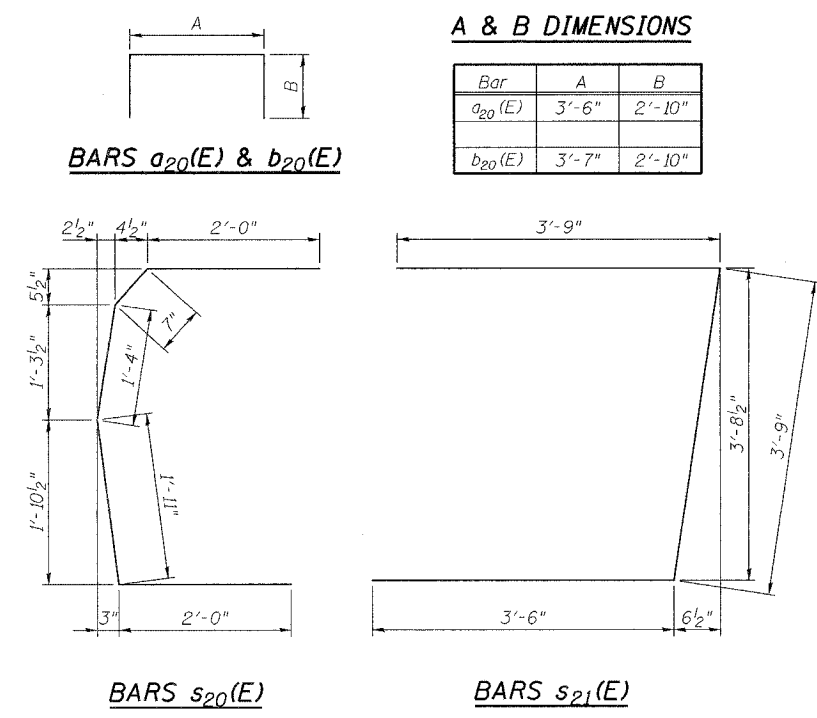


ROUTE NO.	SECT.	COUNTY	SHEET NO.	TOTAL SHEETS
F.A.I. 39	201-IBR	WINNEBAGO	22	40
FED. ROAD DIST. NO. 7	ILLINOIS FED. AID PROJECT		CONTRACT NO. 64857	

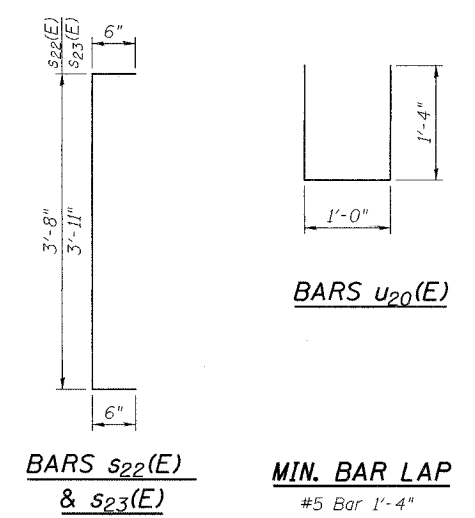


LONGITUDINAL SECTION AT PIER



A & B DIMENSIONS

Bar	A	B
a ₂₀ (E)	3'-6"	2'-10"
b ₂₀ (E)	3'-7"	2'-10"

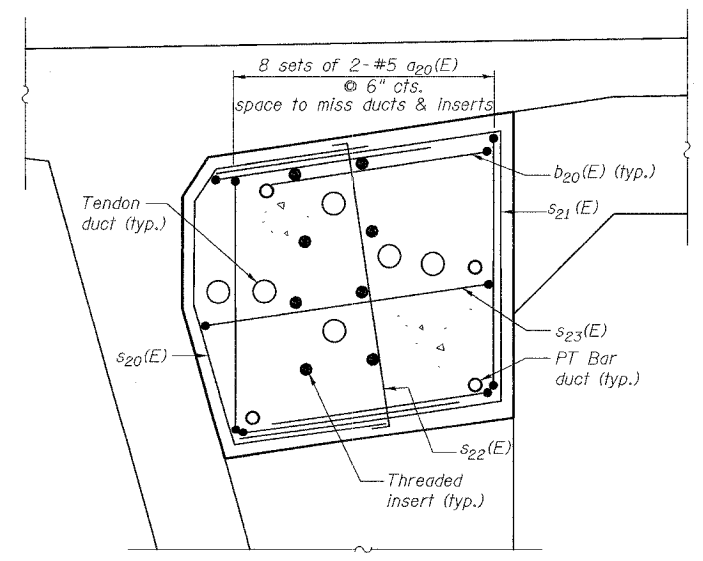


MIN. BAR LAP
#5 Bar 1'-4"

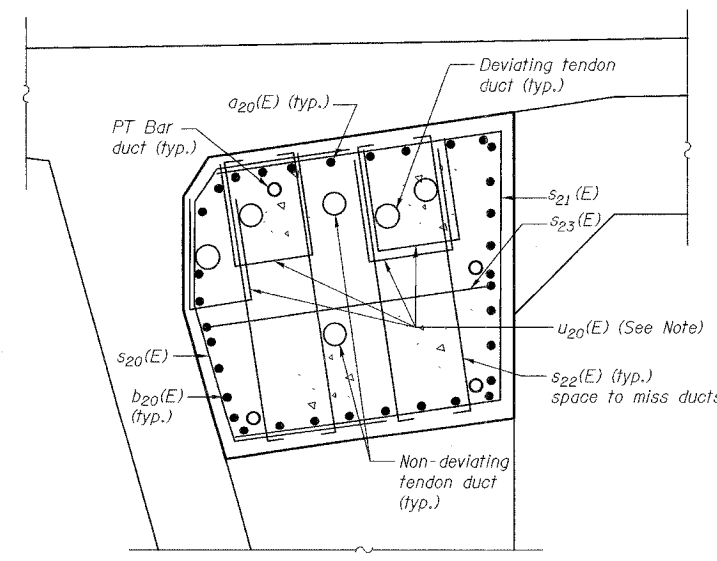
BILL OF MATERIAL FOR ONE PIER
(S.B. or N.B.)

Bar	No.	Size	Length	Shape
a ₂₀ (E)	64	#5	9'-2"	□
b ₂₀ (E)	64	#5	9'-3"	□
b ₂₁ (E)	24	#5	1'-10"	—
s ₂₀ (E)	40	#5	7'-10"	⊏
s ₂₁ (E)	40	#5	11'-0"	⊏
s ₂₂ (E)	100	#5	4'-8"	⊏
s ₂₃ (E)	40	#5	4'-11"	⊏
u ₂₀ (E)	80	#5	3'-8"	□
Concrete Superstructure		Cu. Yd.	12.6	
Reinforcement Bars, Epoxy Coated		Pound	3059	

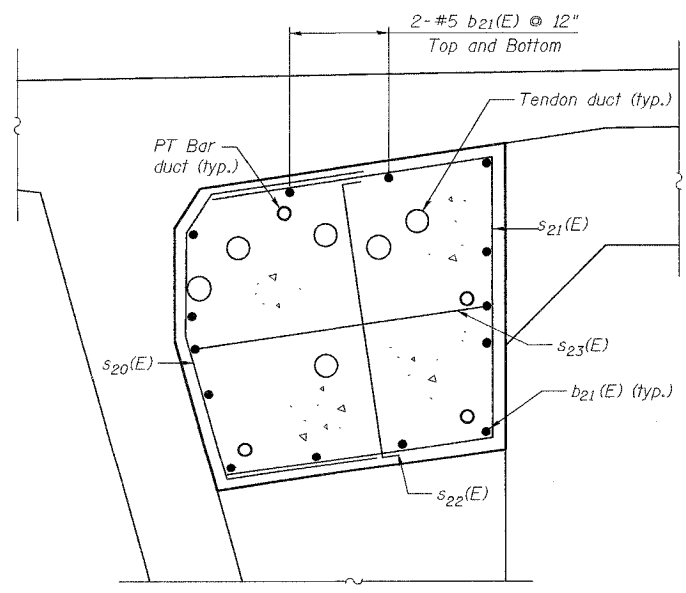
NOTES:
u₂₀(E) bars to be positioned under deviating ducts only. Bend in field as necessary.
Reinforcement bars designated (E) shall be epoxy coated.



SECTION A-A
(Half section shown, other half opposite hand)



SECTION B-B
(Half section shown, other half opposite hand)



SECTION C-C
(Half section shown, other half opposite hand)

Date: 2/2/2007 Time: 4:47:39 PM File name: p:\646265-1\shwukee_mr\vcodd\final\sheet\stprf01s.sht

Designed by: DL
Checked by: WEE
Drafted by: HH
Checked by: MRF

REVISION	DATE	DESCRIPTION
STATE OF ILLINOIS DEPARTMENT OF TRANSPORTATION		
PIER DEVIATOR REINFORCEMENT		
I-39 (FAI 39) OVER KISHAWAUKEE RIVER SECTION 201-IBR WINNEBAGO COUNTY STATION 2425+00 STRUCTURE NOS. 101-0133 (S.B.) & 101-0134 (N.B.)		
PARSONS		CHICAGO, ILLINOIS
DRAWING NO. 22	SCALE N.T.S.	DATE FEB 2007
		SHEET NO. S-11