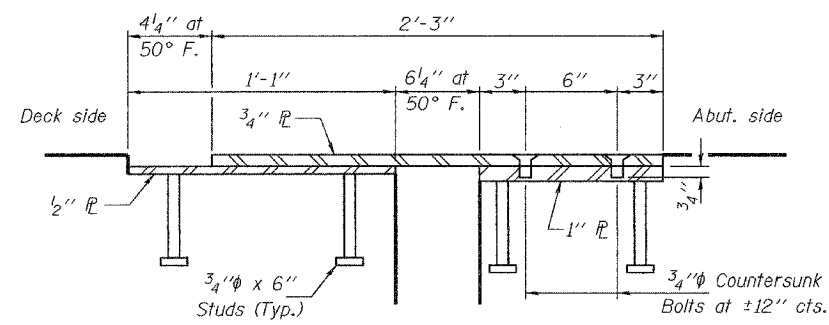


STATE OF ILLINOIS
DEPARTMENT OF TRANSPORTATION

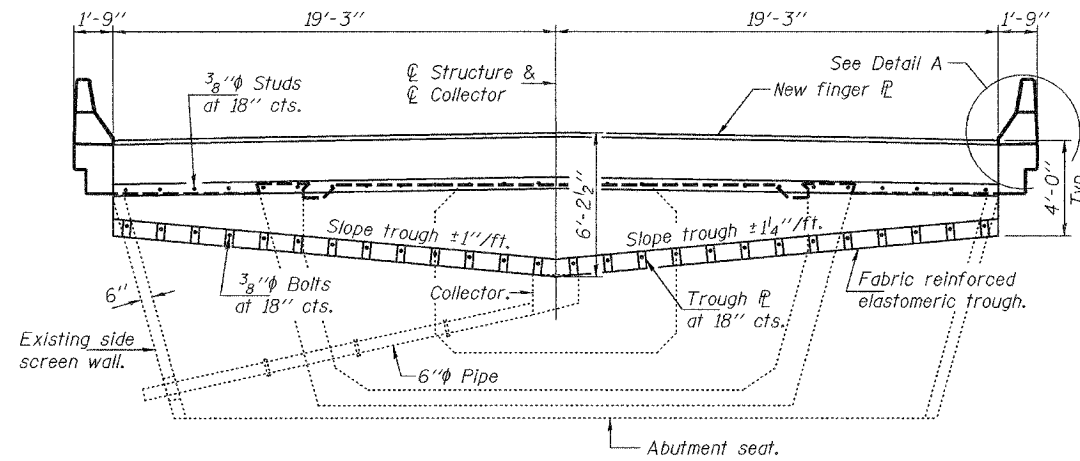
ROUTE NO.	SECTION	COUNTY	SHEET NO.	SHEET NO.
1-39		WINNEBAGO	40	31
FED. ROAD DIST. NO. 7		ILLINOIS	FED. AID PROJECT-	

7 SHEETS

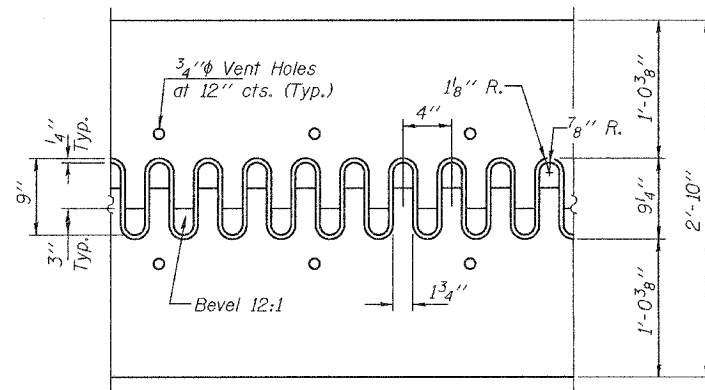
Contract #64857



SECTION B-B

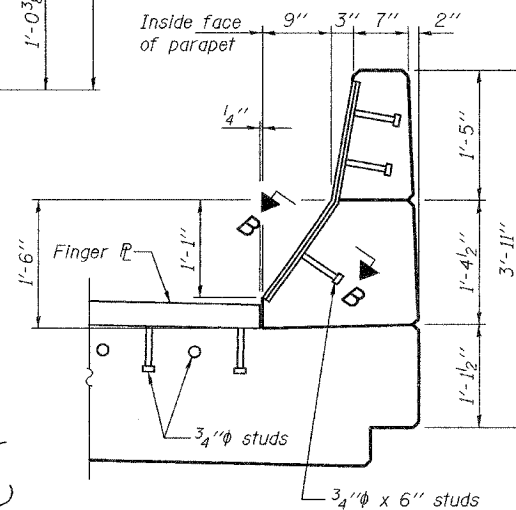


TYPICAL PROPOSED SECTION AT ABUTMENTS



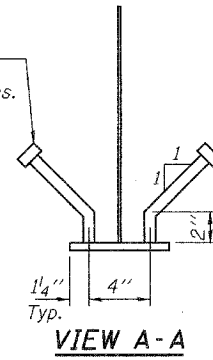
FLAME CUTTING DIAGRAM

Cut from
1/2" x 2'-10" x 38'-5 1/2" (M270, Gr. 50)

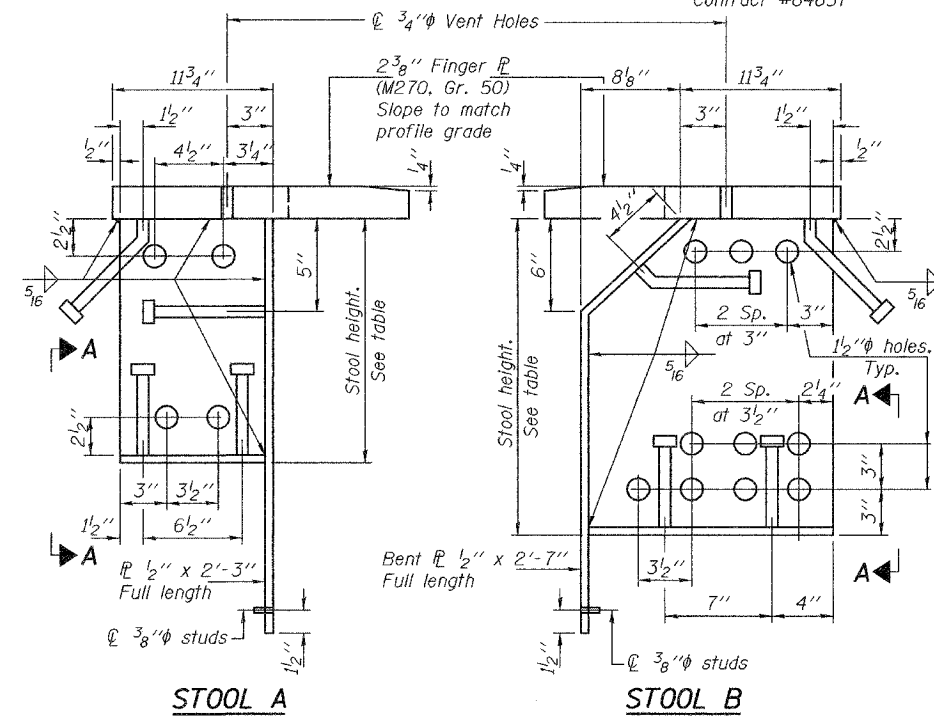


DETAIL A

3/4" x 8" granular or solid flux filled headed studs conforming to Art. 1006.32 of the Standard Specs. Automatically end welded. (Typ.)



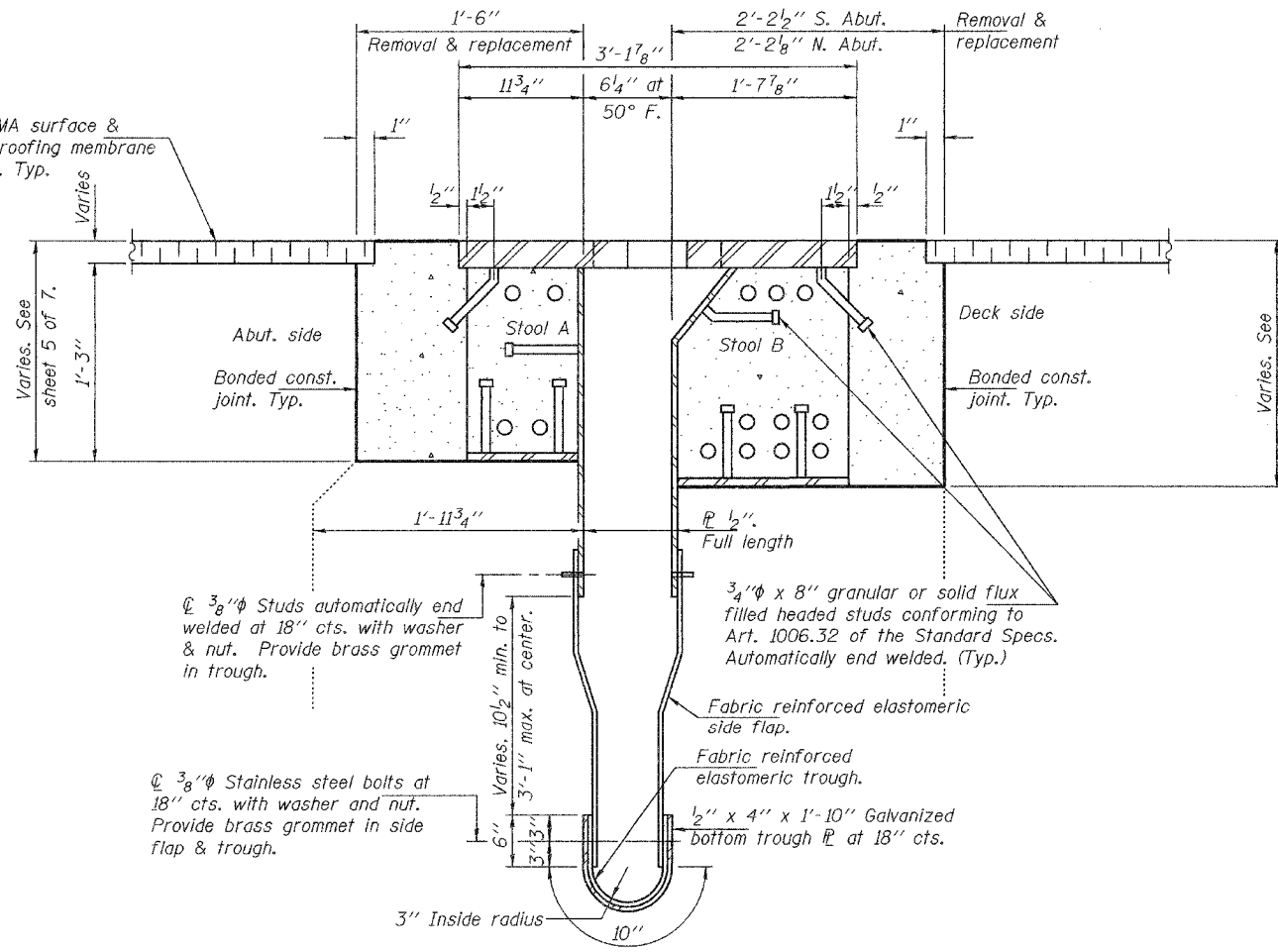
VIEW A-A



STOOL A

STOOL B

New HMA surface & waterproofing membrane system. Typ.



SECTION AT EXP. JOINT

STOOL HEIGHTS

Stool No.	Stool A Typ. Ea. Abut.	Stool B Typ. Ea. Abut.
1	15"	20 1/16"
2	15"	20 9/16"
3	15"	21 1/16"
4	15"	16 9/8"
5	15"	20 5/8"
6	15"	21"
7	15"	21 3/8"
8	15"	21 1/4"
9	15"	22 9/8"
10	15"	22 1/2"
11	16"	22 1/8"
12	16"	22 1/2"
13	16"	22 1/8"
14	16"	21 3/4"
15	16"	21 3/8"
16	16"	17 1/4"
17	16"	23 3/16"
18	16"	22 1/16"
19	16"	22 3/16"
20	16"	

Cut Stool A from W21x57.
Cut Stool B from W27x84.

DESIGNED	ATH
CHECKED	AJB
DRAWN	balva
CHECKED	ATH AJB

MARCH 16, 2007
EXAMINED *Carl Hoyer*
REPAIR PLANS UNIT CHIEF
PASSED *Ralph E. Anderson*
ENGINEER OF BRIDGES AND STRUCTURES

BRIDGE REPAIRS
I-39 OVER KISHWAUKEE RIVER
WINNEBAGO COUNTY
STA. 2425+00
SN 101-0134(NB)