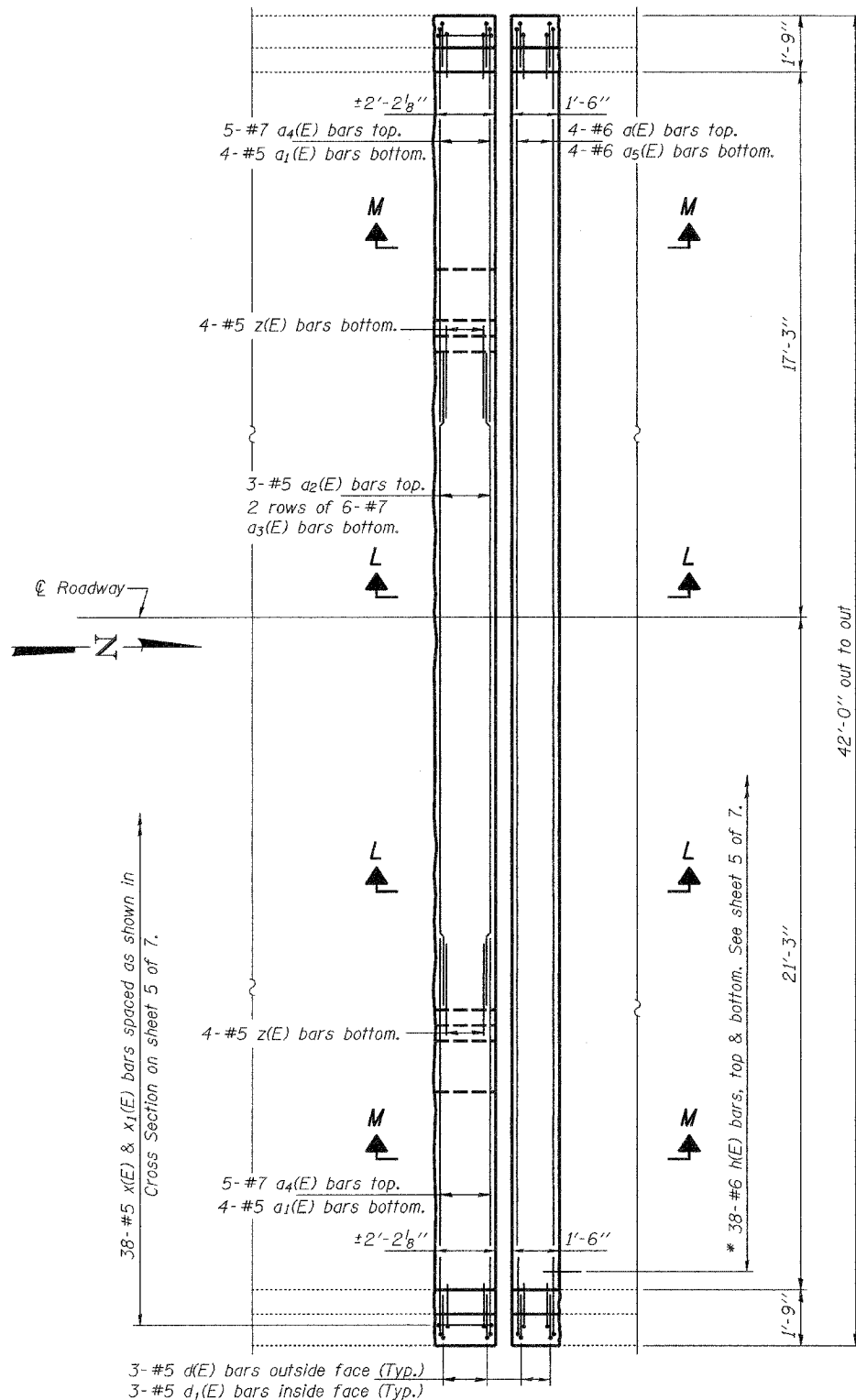


STATE OF ILLINOIS
DEPARTMENT OF TRANSPORTATION

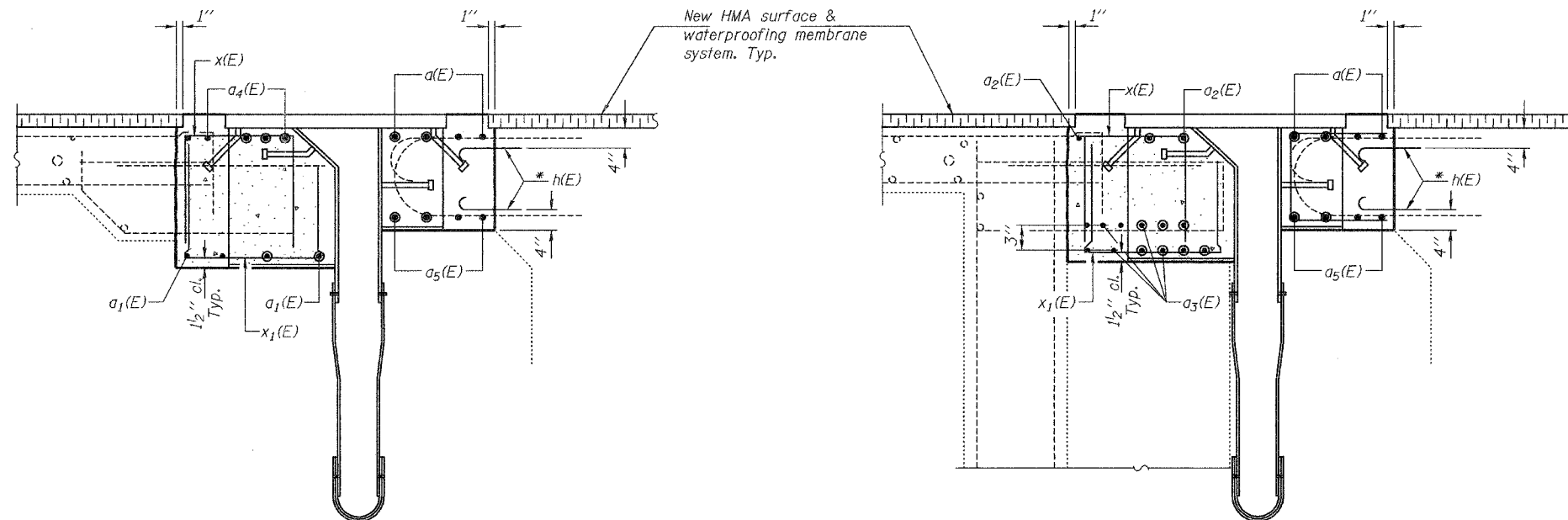
| | | | | |
|-----------------------|----------|------------------|-----------|-----------|
| ROUTE NO. | SECTION | COUNTY | SHEET NO. | SHEET NO. |
| 1-39 | | WINNEBAGO | 40 | 34 |
| FED. ROAD DIST. NO. 7 | ILLINOIS | FED. AID PROJECT | | |

Contract #64857

7 SHEETS



PLAN AT NORTH ABUTMENT



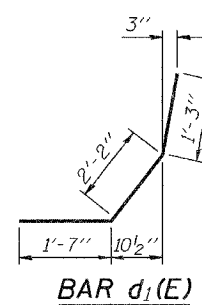
SECTION M-M

SECTION L-L

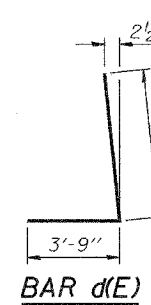
* Epoxy grout h(E) bars in 9" min. holes according to Article 584 of the Standard Specifications. Cost included with Reinforcement Bars. Epoxy Coated

BILL OF MATERIAL

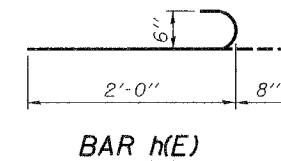
| Bar | No. | Size | Length | Shape |
|----------------------------------|-----|------|---------|-------|
| a(E) | 8 | #6 | 41'-8" | — |
| a1(E) | 16 | #5 | 7'-0" | — |
| a2(E) | 6 | #5 | 19'-9" | — |
| a3(E) | 24 | #7 | 21'-0" | — |
| a4(E) | 20 | #7 | 13'-9" | ┘ |
| a5(E) | 8 | #6 | 38'-9" | — |
| d(E) | 24 | #5 | 7'-0" | ┘ |
| d1(E) | 24 | #5 | 5'-0" | ┘ |
| h(E) | 114 | #6 | 2'-8" | ┘ |
| x(E) | 76 | #5 | 4'-9" | ┘ |
| x1(E) | 76 | #5 | 5'-0" | ┘ |
| z(E) | 16 | #5 | 3'-0" | ┘ |
| Concrete Removal | | | Cu. Yd. | 21.1 |
| Concrete Superstructure | | | Cu. Yd. | 21.1 |
| Reinforcement Bars, Epoxy Coated | | | Pound | 4370 |



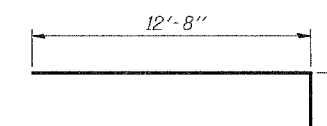
BAR d1(E)



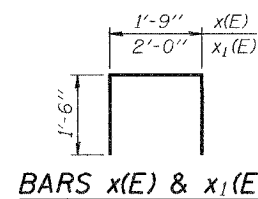
BAR d(E)



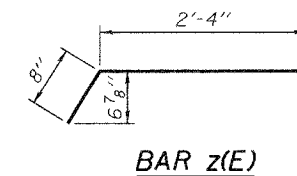
BAR h(E)



BAR a4(E)



BARS x(E) & x1(E)



BAR z(E)

| | |
|----------|---------|
| DESIGNED | ATH |
| CHECKED | AJB |
| DRAWN | baliva |
| CHECKED | ATH AJB |

MARCH 16, 2007
EXAMINED *Carl Perry*
REPAIR PLANS UNIT CHIEF
PASSED *Ralph E. Anderson*
ENGINEER OF BRIDGES AND STRUCTURES

BRIDGE REPAIRS
I-39 OVER KISHWAUKEE RIVER
WINNEBAGO COUNTY
STA. 2425+00
SN 101-0134(NB)